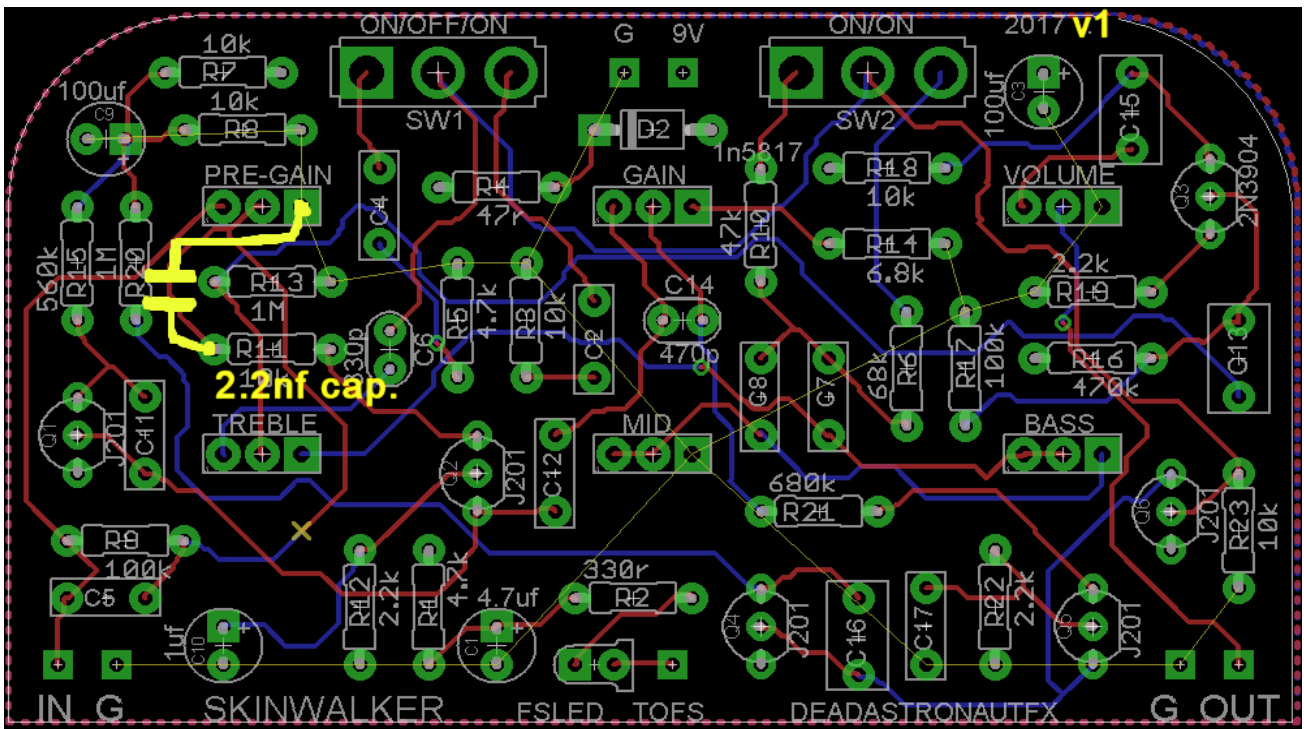


SKINWALKER
Hi Gain Distortion
DEADASTRONAUT 2017.
NOT FOR COMMERCIAL USE
DO NOT POST TO TO OTHER SITES
IN ANY FORM...



NOTE : For the 'V1' pcb, you will need to add a 2.2nf (C18) capacitor soldered onto the points as above. noted by ** in the bill of materials.

Also as this is a very high gain pedal it will need shielded wiring on the pcb input and output.

I also suggest using a 'grounded input' wiring scheme for the 3pdt footswitch.

happy building.

Rob, Deadastronautfx december 2017.

Partlist for DEADASTRONAUTFX //SKINWALKER/ at 29/12/2017 20:36:43

Part	Value	Device	Package	Description
BASS	250k B linear		POTSSMALL_PADS	PADS_SMALL
C1	4.7uf	ELECTRO	050_020_1	0.22 - 100uF
C2	220n	CER/FILMBOX.1	BOX_SMALL	47 - 120pF
C3	100uf	ELECTRO	050_020_1	0.22 - 100uF
C4	100n	CER/FILMBOX.1	BOX_SMALL	47 - 120pF
C5	1n	CER/FILMBOX.1	BOX_SMALL	47 - 120pF
C6	330p	CER/FILM1	050X030_025	47 - 120pF
C7	100n	CER/FILMBOX.1	BOX_SMALL	47 - 120pF
C8	47n	CER/FILMBOX.1	BOX_SMALL	47 - 120pF
C9	100uf	ELECTRO	050_020_1	0.22 - 100uF
C10	1uf	ELECTRO	050_020_1	0.22 - 100uF
C11	47n	CER/FILMBOX.1	BOX_SMALL	47 - 120pF
C12	22n	CER/FILMBOX.1	BOX_SMALL	47 - 120pF
C13	1uf	CER/FILMBOX.2	BOX_MED	47 - 120pF
C14	470p	CER/FILM1	050X030_025	47 - 120pF
C15	1uf	CER/FILMBOX.2	BOX_MED	47 - 120pF
C16	470n	CER/FILMBOX.2	BOX_MED	47 - 120pF
C17	2.2n	CER/FILMBOX.1	BOX_SMALL	47 - 120pF

**C18 (added onto pcb V1 see picture) 2.2n

D1	LED3MM	LED3MM	LED3MM	
D2	1n5817	DO41.3	DO41-3	DO-41 Package
GAIN	A1M LOG	POT		
MID	10kb linear	POTS		
PRE-GAIN	A1M LOG	POTS		
Q1	J201	J201	TO92-	N-channel JFET
Q2	J201	J201	TO92-	N-channel JFET
Q3	2N3904	2N3904	TO92-	NPN Transistor
Q4	J201	J201	TO92-	N-channel JFET
Q5	J201	J201	TO92-	N-channel JFET
Q6	J201	J201	TO92-	N-channel JFET
R1	4.7k	R_.3B	R0207/3	
R2	330r	R_.3B	R0207/3	
R3	10k	R_.3B	R0207/3	
R4	47r	R_.3B	R0207/3	
R5	4.7k	R_.3B	R0207/3	
R6	68k	R_.3B	R0207/3	
R7	10k	R_.3B	R0207/3	
R8	10k	R_.3B	R0207/3	
R9	100k	R_.3B	R0207/3	
R10	47k	R_.3B	R0207/3	
R11	10k	R_.3B	R0207/3	
R12	2.2k	R_.3B	R0207/3	
R13	1M	R_.3B	R0207/3	
R14	6.8k	R_.3B	R0207/3	
R15	560k	R_.3B	R0207/3	
R16	470k	R_.3B	R0207/3	
R17	100k	R_.3B	R0207/3	
R18	10k	R_.3B	R0207/3	
R19	2.2k	R_.3B	R0207/3	
R20	1M	R_.3B	R0207/3	
R21	680k	R_.3B	R0207/3	
R22	2.2k	R_.3B	R0207/3	
R23	10k	R_.3B	R0207/3	
SW1.ON/OFF/ON	spdt on/off/on	SPDT	M9040P	TOGGLE SWITCH
SW2	on/on	SPDT	M9040P	TOGGLE SWITCH
TREBLE	100k b linear	POT		

VOLUME 100KA LOG POT

DEADATRONAUTFX 2017. ''SKINWALKER'' copyright 2017.