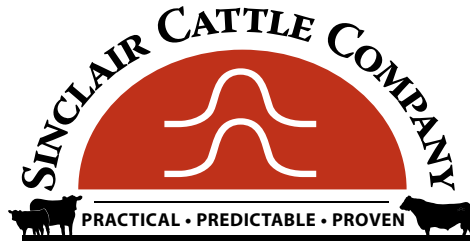


## **Arrive Alive Calving Ease Herd Builder Sale**

**MARCH 23, 2019 • BUFFALO, WYOMING • 1 PM**





Welcome to our 2019 production sale. Thank you to our customers, you make this all possible by letting us provide you with our Practical-Predictable-Proven genetics.

On Saturday March 23rd we will be offering animals that offer years of selection for Range Savvy and Arrive Alive Calving Ease bulls and heifers. We are proud that we can use our own bulls back on our cowherd to produce the kind of bulls and heifers we offer for sale. As part of our focused breeding approach, 80% of the bulls offered have a birth weight EPD of .9 or lower. Our program also offers bulls that will work well on the mature cow herd. Bulls like the ones sired by Sinclair Exactly 4U2, VDAR Rito 953, Ideal 4458 of 6807 5103, among others as well, offer growth made to be utilized as you choose, to help you be more profitable.

Our heifers are offering you a chance at some of our top genetics, the heifers are available for viewing anytime, they are located at Veltkamp Livestock in Manhattan, Montana. The heifers are all out of solid productive cows straight from our herd. It's hard to let these heifers go as we would like to give them the chance at production and the benefits of their progeny; however, we also enjoy seeing them produce and work for you.

One of the best parts of this business, that we enjoy, is building relationships with our customers. If we can help in any way, please let us know. We would like to visit with each one of our potential customers. If we miss talking to you, we have provided footnotes meant to be informative and conversational.

The bulls and heifers have again been developed by Phil and Kris Veltkamp in Manhattan, Montana, they have out done themselves again with the great job they do for our cattle! The bulls were developed to provide you with years of productive service. The bulls are available for viewing any time before Thursday March 21st at Veltkamps. The bulls and heifers will be available to view in Buffalo late afternoon on March 21st until sale time. We are excited to offer you these animals. It is also an exciting time to see new sire groups surface that will benefit our customers just as the proven sires have done.

We will have updated Ultrasound information and heifer yearling weights the first part of March, please call or email if you would like the information. We will also have the information on our website and printed on sale day. Videos of the sale animals will be available to view via a link on our website at [www.sinclaircattle.com](http://www.sinclaircattle.com), or [www.billpelton.com](http://www.billpelton.com). If you can't make the sale we will have a conference call available with Bill Pelton, or internet bidding is available with [CattleUSA.com](http://CattleUSA.com) or [DVAuction.com](http://DVAuction.com). We can also take your order and help select bulls and heifers that will work well for you. All bids will be kept confidential and handled with respect.

All bulls selling will have passed a breeding soundness exam and be tested negative for BVD.

We are excited to be welcoming Del Ficke from Nebraska as our speaker Friday, March 22nd starting at 6:00pm in Buffalo at the Hampton Inn. Please be our guest for a casual beef dinner, dessert and conversation.

This is an exciting and challenging time in the cattle industry and we are proud to be a part of it. Thank you for your business and your faith in our program. We look forward to seeing you on sale day!

Respectfully,

J. Duncan Smith and Logan Baker



**Please join us March 22nd at the Hampton Inn, Buffalo Wyoming for an informative and inspiring presentation by Del Ficke. A meal will be provided for your enjoyment. We will see you there.**

## **Taking Back the Reins of Your Family's Future**

Graze Master Genetics – Common Sense Consulting©



### About Del Ficke:

Del Ficke is the manager of Ficke Cattle Company – Graze Master Genetics®. His main motivation is connecting family farms and ranches with the resources they already have in front of them. He revisits practices that have worked in the past along with applying modern technology as-needed, not just because it's "en vogue." His goal is building a bright future for family ag businesses, all while revitalizing communities.

With more than 35 years of experience as both an agriculturist and cattleman, Del has developed a one-of-a-kind trademarked breed of composite cattle, the Graze Master. He has spent the last several years transitioning his operation back to what he calls, "a more holistic, sensible and profitable approach that is both modern and historically-based in both concept and philosophy." He is restoring the soils to their more natural state and has transformed commodity-driven cropland back into native pastures. He has also revisited a more natural approach to cattle raising. Del has sold cattle genetics as well as consulted throughout the nation and internationally.

In addition to his production agricultural pursuits, Del has experience managing a medical clinic in Lincoln, Neb. and has also held numerous leadership positions in agricultural associations and in agricultural business. Del and his wife Brenda live on the fifth-generation headquarters near Pleasant Dale, Neb. close to their daughter Emily, son Austin and his wife Alyssa and their daughter Attley.

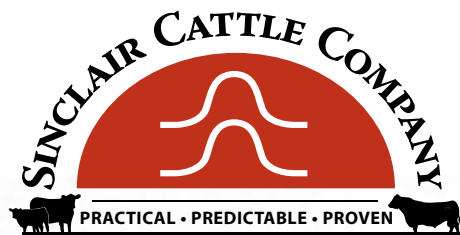
Reach Del at (402) 499-0329 or email [fickecattle@outlook.com](mailto:fickecattle@outlook.com). Every family farm and ranch is important to the complete picture of success as a community and country. Del absolutely wants to talk to you.

Learn more at: [facebook.com/GrazeMaster](https://facebook.com/GrazeMaster), [www.fickecattle.com](http://www.fickecattle.com) and [linkedin.com/in/GrazeMaster](https://linkedin.com/in/GrazeMaster).

**As you know there are many challenges in the ranching world. From cow farts to lab grown meat the rancher of today has a hard time staying ahead of the new threats. Some of these threats can be addressed with genetics and some cannot. Come join us the evening of March 22nd, enjoy a presentation by Del, visit with us and learn how we can help you. Our goal is that you take something home with you to make your operation more profitable!**

*"To be prepared for war is one of the most effective means of preserving peace." George Washington*





**Saturday**  
**March 23, 2019**  
**1:00 PM**

**Buffalo Livestock Auction**  
**Buffalo, Wyoming**

**Sale Day Phone**  
**307-684-9462**

*For our valued customers  
who can't make it in person  
on sale day, please see the  
following page for bidding  
options*

**Logan Baker**  
**1-800-761-2077**  
**or (307) 254-1477**

**www.sinclaircattle.com**

Visit  
**buffalowyo.com**  
to view places to dine and  
tour in and around  
Buffalo, Wyoming.

Original N-Bar Genetics Working For You

**Staying true**  
*to the* **Legacy**

## **Sale professionals:**

Roger Jacobs, Auctioneer

Gregg and Danny Matney, Buffalo Livestock Auction \_\_\_\_\_ (307) 684-0789

Kurt Kangas, American Angus Association \_\_\_\_\_ (406) 254-7576

Curt Cox, Wyoming Livestock Roundup \_\_\_\_\_ (307) 630-4604

Dwayne Dietz, Western Ag Reporter \_\_\_\_\_ (406) 672-8500

Kevin Murnin, Western Livestock Journal \_\_\_\_\_ (406) 853-4638

Billy Hall, Chappell Feedlot \_\_\_\_\_ (918) 244-0154

**Bids:** Buyer may call or send their bids to any of the sale professionals listed above or directly to Sinclair Cattle Company. Complete satisfaction is guaranteed for cattle purchased sight unseen as well as all bulls sold.

**Sale Location:** Buffalo Livestock Auction, Buffalo Wyoming.

**Terms & Conditions:** Cash. All cattle sell under the standard terms & conditions as adopted by the American Angus Association printed in the back of this book.

**Insurance:** Mortality Insurance representatives will be available sale day.

**Sale Block:** All announcements from the sale block on sale day take precedence of material printed in this sale book.

**Sale Order:** The cattle will sale in catalog order. This catalog represents the results of careful selection of this sale offering. We invite you to bid with confidence.

**Food:** Coffee and donuts in the morning. A beef lunch provided by Johnson County 4-H group Krazy Kritters starting at 11:30am.

## **Hotels:**

*These are all within a block or within walking distance of one another.*

- **Ask for the Sinclair Cattle Company rate**  
**Hampton Inn and Suites • (307) 684-8899**
- Holiday Inn Express • (307) 684-9900
- SureStay Plus Hotel • (307) 684-9564
- The Super 8 • 1-800-800-8000 • (307) 684-2531
- Buffalo Inn • (307) 684-7000
- Rodeway Inn • (307) 684-5505

## **Downtown**

- The Historic Occidental Hotel • (307) 684-0451
- The Big Horn Motel is downtown • (307) 684-7822
- The Mansion House Inn next door to the Big Horn Motel • (307) 684-2218

## **Airports Serving Buffalo, Wyoming:**

Johnson County Airport, Buffalo • 307-684-9672

Campbell County Airport, Gillette • 307-686-1042

Sheridan County Airport, Sheridan • 307-674-4222

Natrona County Airport, Casper • 307-472-6688

Billings Logan International • ~2hr 40 min. drive to Buffalo • 169 miles

*Will provide heifer yearling data along with carcass ultrasound  
at sale or we can email it if requested*



Special room rates have  
been arranged go to  
sinclaircattle.com and click  
on the Hampton Inn link  
by 3/22/19 to reserve your  
room.



## DELIVERY TERMS

### • FREE DELIVERY

- Sinclair Cattle Company offers free delivery up to 1,000 miles to central stockyard points or in route drop off locations on bull purchases.
- Delivery of all females will be charged at cost.
- Sinclair Cattle Company will help coordinate delivery to keep costs as low as possible.

## GUARANTEE

Sinclair guarantees bulls to be sound breeders for first breeding season unless injury is caused by buyers' negligence or an act of God. Breeding season is defined as 90 days within first turn out. If a bull cannot settle cows you get a credit minus salvage value at the next year's sale, a replacement if one is available or your money back minus salvage value. The guarantee does not cover death of the bull or any treatable condition such as foot rot or pink eye etc. Mortality coverage will be available to purchase on sale day. Sinclair Cattle Company must be notified by December 1, 2019 of any issues. All bulls must be inspected by a licensed veterinarian.

## VOLUME DISCOUNTS

- Buy 5 to 9 bulls to one buyer and receive a \$75 per head discount.
- Buy 10 or more bulls and receive a \$150 per head discount.

Sinclair Cattle Company is retaining one-third semen revenue sharing interest in each individual bull in the sale unless otherwise stated.

If you have any questions please call Logan at 307-254-1477 or email at [sinclaircattle@gmail.com](mailto:sinclaircattle@gmail.com)

Helping the hard working rancher with our reliable genetic packages that result from our planned multigenerational breeding program; which focuses on the use of proven genetics to produce a fertile cow, get a live calf on the ground and a quality carcass with optimum growth that is profitable to help **YOUR** next generation.

*For our valued customers who can't make it. We welcome you to utilize these options!*



### SALE DAY CONFERENCE CALL

*"Our goal is to get you in the seats but if you can't make it on sale day, we're fixin' to get you "on the line"*

Easy as 1~2~3

Call BILL PELTON in Advance to ...

1. Pre-register for your buyer number

2. Receive toll free call in # and pin

3. Get last minute instructions for call

Check out our sale calendar at [www.BILLPELTON.com](http://www.BILLPELTON.com) LIKE US ON FACEBOOK!

T: 406-671-5100 | E: [BILL@BILLPELTON.COM](mailto:BILL@BILLPELTON.COM) | 2966 HWY 78 ABSAROKEE, MT 59001

### Broadcasting on

## CATTLE USA.com

### LIVE CATTLE AUCTIONS

1. Go to [www.CattleUSA.com](http://www.CattleUSA.com)
2. First time users must register as a viewer.
3. In the 'Live Auctions' tab select the sale that you wish to register as a buyer (only if you wish to buy) and click the 'Submit' button.
4. Fill out the required contact and banking information then click the 'Proceed' button.
5. After you have been approved as a buyer you will receive a confirmation email. On sale day, log in and click the green 'View' button for our sale. You will have the bid console available to place your online bids. Click on 'Bid Now' to place a bid.
6. The bid received by the auctioneer will be the amount showing in the 'Price' box in the bid console.

*High speed internet required for viewing & bidding.*

Questions call 307-684-0789

**DVAuction**  
Broadcasting Real-Time Auctions

Never Miss An Auction Again!  
Watch & Bid online for FREE!

**Visit [www.DVAuction.com](http://www.DVAuction.com)  
and Register Today!**

For General Questions Please Contact Our Office:  
(402) 316-5460 or [support@dvauction.com](mailto:support@dvauction.com)

# American Angus Association® Selection Tools

**Expected Progeny Difference (EPD)**, is the prediction of how future progeny of each animal are expected to perform relative to the progeny of other animals listed in the database. EPDs are expressed in units of measure for the trait, plus or minus. Interim EPDs may appear on young animals when their performance has yet to be incorporated into the American Angus Association National Cattle Evaluation (NCE) procedures. This EPD will be preceded by an "I", and may or may not include the animal's own performance record for a particular trait, depending on its availability, appropriate contemporary grouping, or data edits needed for NCE.

**Accuracy (ACC)**, is the reliability that can be placed on the EPD. An accuracy of close to 1.0 indicates higher reliability. Accuracy is impacted by the number of progeny and ancestral records included in the analysis.

## GROWTH

**Calving Ease Direct (CED)**, is expressed as a difference in percentage of unassisted births, with a higher value indicating greater calving ease in first-calf heifers. It predicts the average difference in ease with which an sire's calves will be born when he is bred to first-calf heifers.

**Birth Weight EPD (BW)**, expressed in pounds, is a predictor of a sire's ability to transmit birth weight to his progeny compared to that of other sires.

**Weaning Weight EPD (WW)**, expressed in pounds, is a predictor of a sire's ability to transmit weaning growth to his progeny compared to that of other sires.

**Yearling Weight EPD (YW)**, expressed in pounds, is a predictor of a sire's ability to transmit yearling growth to his progeny compared to that of other sires.

**Yearling Height EPD (YH)**, is a predictor of a sire's ability to transmit yearling height, expressed in inches, compared to the that of other sires.

**Scrotal Circumference EPD (SC)**, expressed in centimeters, is a predictor of the difference in transmitting ability for scrotal size compared to that of other sires.

## CARCASS

The new carcass EPDs are calculated from an integrated analysis of the Angus Herd Improvement Records (AHIR®) carcass and ultrasound phenotypic databases. The genetic evaluation produces a single set of EPDs for carcass weight, marbling score, Ribeye area and fat thickness. The units of measure are in carcass trait format and analyzed on an age-constant basis.

**Carcass Weight EPD (CW)**, expressed in pounds is a predictor of the differences in hot carcass weight of a sire's progeny compared to progeny of other sires.

**Marbling EPD (Marb)**, expressed as a fraction of the difference in USDA marbling score of a sire's progeny compared to progeny of other sires.

**Ribeye Area EPD (RE)**, expressed in square inches, is a predictor of the difference in ribeye area of a sire's progeny compared to progeny of other sires.

**Fat Thickness EPD (Fat)**, expressed in inches, is a predictor of the differences in external fat thickness at the 12th rib (as measured between the 12th and 13th ribs) of a sire's progeny compared to progeny of other sires.



## MATERNAL

**Calving Ease Maternal (CEM)**, is expressed as a difference in percentage of unassisted births with a higher value indicating greater calving ease in first-calf daughters. It predicts the average ease with which a sire's daughters will calve as first-calf heifers when compared to daughters of other sires.

**Maternal Milk EPD (Milk)**, is a predictor of a sire's genetic merit for milk and mothering ability as expressed in his daughters compared to daughters of other sires. In other words, it is that part of a calf's weaning weight attributed to milk and mothering ability.

**Mature Weight EPD (MW)**, expressed in pounds, is a predictor of the difference in mature weight of daughters of a sire compared to the daughters of other sires.

**Mature Height EPD (MH)**, expressed in inches, is a predictor of the difference in mature height of a sire's daughters compared to daughters of other sires.

**Cow Energy Value (\$EN)**, expressed in dollars savings per cow per year, assesses differences in cow energy requirements as an expected dollar savings difference in daughters of sires. A larger value is more favorable when comparing two animals (more dollars saved on feed energy expenses). Components for computing the cow \$EN savings difference include lactation energy requirements and energy costs associated with differences in mature cow size.

## \$VALUE INDEXES

**\$Value indexes**, are multi-trait selection indexes to assist beef producers by adding simplicity to genetic selection decisions. \$Values are reported in dollars per head, where a higher value is more favorable. The \$Value is an estimate of how future progeny of each sire are expected to perform, on average, compared to progeny of other sires in the database if the sires were randomly mated to cows and if calves were exposed to the same environment.

**Weaned Calf Value (\$W)**, an index value expressed in dollars per head, is the expected average difference in future progeny performance for preweaning merit. \$W includes both revenue and cost adjustments associated with differences in birth weight, weaning direct growth, maternal milk, and mature cow size.

## Carcass EPD layout

The general layout of Carcass EPDs is depicted below. When available, the carcass group/progeny counts and ultrasound group/progeny counts are also included.

Carcass					
Cwt Acc	Marb Acc	RE Acc	Fat Acc	Carc Grp Carc Prog	Usnd Grp Usnd Prog
+19 .81	+44 .83	+48 .80	+031 .79	110 472	148 214

The carcass genetic evaluation is designed to simplify selection tools for commercial bull buyers using Angus genetics. The evaluation is enhanced to include carcass performance data and to simultaneously incorporate ultrasound performance data on bulls, heifers and steers. Ultrasound traits are analyzed as indicator traits for carcass merit. The outcome of this analysis is a single set of EPDs, simple to interpret in carcass units, relevant to commercial producers and the industry.

**Carcass Ultrasound Results available sale day or email Logan at [sinclaircattle@gmail.com](mailto:sinclaircattle@gmail.com) to request a spreadsheet with all data available.**





**LOT 1**

## Sinclair Sam 8XX11

BULL 19364732

DOB: 02/13/18

TATTOO: 8XX11

N Bar Emulation EXT  
Sinclair Emulation XXP  
N Bar Primrose Y3051

Emulation N Bar 5522  
SCC Enchantress 3F2 X412  
N Bar Enchantress 4908

Emulation N Bar 5522  
N Bar Primrose 2424  
N Bar Emulation EXT  
N Bar Primrose 2429  
Emulation 31  
Ankony 8F78 Lass 8F275  
Basin Emulation 5953  
Coffey Enchantress 424

Individual	Actual Birth Wt	88		
	Adj. Weaning Wt	508		
	Adj. Yearling Wt	1034		
Inbreeding Coefficient: 12.94%				
EPDs	CED	1	Milk	17
	BW	.5	\$W	28.36
	WW	37	\$EN	11.86
	YW	66		

Welcome! Thank you for your interest in our offering. We will start things off with a cracker jack stud. Lot 1 is very quiet and easy to be around- he is alert and smart as a herd bull should be! Combining Sinclair Emulation XXP with the dam of N Bar Shadow and topped with N Bar Emulation 5522 insures a maternal pedigree that is relevant for today or any day. This smooth moving bull who is a product of our embryo transfer program has added length, thickness and carries tremendous potential that only a linebred bull can provide. Sam has excellent scrotal shape with a size of 36cm. This bull oozes fertility! Also let's not forget the productive cows that are wrapped into this bull. First, we have N Bar Primrose 2424 (multiple times) the dam of N Bar Emulation EXT. Also, as I just mentioned, the dam of N Bar Shadow, who has many fans. And the wonderful N Bar Primrose Y3051 "A14" the mother of Sinclair Emulation XXP, Sinclair Emulation 5522 XP and Sinclair Executive 9XV2 among many other note-worthy progeny. With semen on Sinclair Emulation XXP becoming harder and harder to come by- don't miss your chance at the next generation with Sinclair Sam 8XX11. We would like to collect semen on Lot 1 prior to delivery. Selling half interest and full possession.



SCC Enchantress 3F2 X412



Sinclair Enchantress 4F4X



N Bar Shadow



Sinclair Emulation XXP





**LOT  
2**

## **Sinclair Exquisite 8X1**

BULL 19169715

DOB: 02/13/18

TATTOO: 8X1

Emulation N Bar 5522  
N Bar Emulation EXT  
N Bar Primrose 2424  
N Bar Prime Time D806  
**Sinclair K Bty 9P32 V149**  
N Bar Kinochtry Beauty 4317

Emulation 31  
Ankony 8F78 Lass 8F275  
Emulation 31  
Primrose N Bar 9962  
Gardens Prime Time  
N Bar Miss Emulous A404  
Leachman Bold Driver  
N Bar Kinochtry Beauty 2414

Individual	Actual Birth Wt	82		
	Adj. Weaning Wt	650		
	Adj. Yearling Wt	1143		
Inbreeding Coefficient: 8.76%				
EPDs	CED	6	Milk	25
	BW	.2	\$W	34.89
	WW	35	\$EN	2.44
	YW	62		

Ahh well look here a N Bar Emulation EXT son who is out of a very good 10 year-old cow. This gentleman is ready to go to work for you. The mother of lot 2 has a darn good calf every year, and as a testament to this productive cow family a full sister who is a mirror image of lot 2's mother raises a very high quality calf year in and year out as well. She has a son working for the Triangle S Krew and 2 sons working for Reid Spencer in Nebraska. The dam of this bull has a calving interval of 366 days and an average wean ratio of 107, lot 2 has an wean ratio of 107 and yearling ratio of 107. Lots of maternal capabilities bred into this bull.



N Bar Emulation EXT



Sinclair K Bty 9P31 V149





**LOT**  
**3**

**Sinclair Black Iron 8UR4**  
 BULL 19169654    DOB: 02/14/18    TATTOO: 8UR4

Sinclair Executive 9XV2  
**Sinclair Exactly 4U2**  
 Sinclair Lady OR109 03S3  
 Vance Top Dawg  
**Sinclair Primrose 2TD8 A14**  
 N Bar Primrose Y3051

N Bar Emulation Ext V722  
 N Bar Primrose Y3051  
 R R Rito 707  
 Sinclair Lady 03S3 4465  
 Wagner Graham Corbinaire 624  
 Spurs Emulous Raven 14  
 N Bar Emulation EXT  
 N Bar Primrose 2429

<b>Individual</b>	Actual Birth Wt	90		
	Adj. Weaning Wt	580		
	Adj. Yearling Wt	1140		
<b>Inbreeding Coefficient: 9.08%</b>				
<b>EPDs</b>	CED	1	Milk	18
	BW	1.5	SW	36.56
	WW	44	SEN	8.36
	YW	71		

Do you need fleshing ease, smart, thick cattle with muscle- built the right way? Take a look at this brute. This gentleman bull will help you out! The mother of this bull has a calving interval of 369 days and a wean ratio of 105, and she is a daughter of "A14", making lot 3 double bred to the cherished A14 cow. This bull will provide pounds in an efficient manner and make females that create profitable opportunities. Lot 3 has a wean ratio of 105 and a yearling ratio of 108 combined with a 37 cm scrotal. Thank you for your time, we appreciate it.



Sinclair Exactly 4U2



N Bar Primrose Y3051 "A14"





Sinclair Executive 9XV2

**LOT  
4**

## Sinclair Rollin Coal 8K17

BULL 19275401

DOB: 01/29/18

TATTOO: 8K17

Sinclair Entrepreneur 8R101  
**Sinclair Broker 3RC33**  
Sinclair Lady Ida 8XV12 C52

Sinclair Executive 9XV2  
**Sinclair K Bty 6U88**  
Sinclair K Bty 3A23 1BA18

R R Rito 707  
N Bar Kinochtry Beauty Z1925  
N Bar Emulation Ext V722  
N Bar Lady Ida Z1453  
N Bar Emulation Ext V722  
N Bar Primrose Y3051  
Emulation 31  
Sinclair K Bty 1BA18 7FE6

Individual	Actual Birth Wt	65		
	Adj. Weaning Wt	675		
	Adj. Yearling Wt	1296		
Inbreeding Coefficient: 8.33%				
EPDs	CED	10	Milk	23
	BW	-2.2	\$W	41.88
	WW	39	\$EN	4.28
	YW	64		

🔥 This bull started small and exploded in the hills of Wyoming. Stretch, as I call him, has a lot going for him. He comes from a productive young cow that stems from a cow family that gets the job done. This calving ease bull has a wean ratio of 113 and yearling ratio of 121 to give you an idea of how well stretch grew. The calving ease is bred in thru several generations of range savvy genetics that work well. I call him Stretch not because he is tall but because he is long and stout.







**LOT 5**

## Sinclair Rollin Coal 8K11

BULL 19169646

DOB: 02/20/18

TATTOO: 8K11

Sinclair Entrepreneur 8R101  
Sinclair Broker 3RC33  
Sinclair Lady Ida 8XV12 C52

Basin Rainmaker 914A  
Sinclair K Bty 30012 OXM2  
Sinclair K Bty OXM2 3J3

R R Rito 707  
N Bar Kinchtry Beauty Z1925  
N Bar Emulation Ext V722  
N Bar Lady Ida Z1453  
Basin Rainmaker 654X  
Basin Blackbird 584Y  
Sinclair Multi-X  
Sinclair K Bty 3J3 H426

Individual	Actual Birth Wt	86		
	Adj. Weaning Wt	698		
	Adj. Yearling Wt	1349		
Inbreeding Coefficient: 4.41%				
EPDs	CED	2	Milk	28
	BW	.8	\$W	47.16
	WW	45	\$EN	-6.9
	YW	74		

Here is a bull who knows how to grow. This stout bull can help you accomplish many goals you may have. The 6 year old dam of lot 5 has a calving interval of 366 days and wean ratio of 114. You may notice the genetics lined up in this bull have benefitted cattleman for years. Lot 5's dam has a bit more frame then most of our cows, so if that floats your boat-go after lot 5!



Sinclair Broker 3RC33



N Bar Primrose 2424

An onion can make people cry, but there has never been a vegetable invented to make them laugh. Will Rogers





**LOT  
6**

## Sinclair Foreman 8L30

BULL 19279833

DOB: 02/25/18

TATTOO: 8L30

Sinclair Patriarch 3B47  
Sinclair Plains Boss 5B02  
Sinclair Lady Ida 7V19 04F3  
  
Emulation 31  
Sinclair K Bty 4A6 20C12  
Sinclair K Bty 20C12 0BA15

Sinclair Boss  
Sinclair Lady Ida 70C7 2V11  
N Bar Emulation Ext A1747  
Sinclair Lady Ida 04F3 B154  
F C R Elation Lad 652  
Miss Emulous 243  
O C C Great Plains 943G  
Sinclair K Bty 0BA15 6E4

Individual	Actual Birth Wt	78		
	Adj. Weaning Wt	601		
	Adj. Yearling Wt	1177		
Inbreeding Coefficient: 10.62%				
EPDs	CED	9	Milk	21
	BW	-1.0	\$W	36.07
	WW	39	\$EN	4.78
	YW	69		

Generations of low birth and calving ease wrapped up into this typey rascal. Don't fear just because he has generations of calving ease built in, this bull is not frail. This stout muscular bull from a young Emulation 31 daughter has plenty of substance. Well mannered and ready to work- look to lot 6 for longevity and common sense breeding. Lot 6 has a wean ratio of 108 and yearling ratio of 112.



Sinclair Lady Ida 7V19 04F3

Do not withhold good  
from those to who it is  
due, when it is in your  
power to act. -Solomon.







N Bar Emulation EXT

**LOT  
7**

## Sinclair Foreman 8L21

BULL 19169682

DOB: 02/24/18

TATTOO: 8L21

Sinclair Patriarch 3B47  
**Sinclair Plains Boss 5B02**  
Sinclair Lady Ida 7V19 04F3

N Bar Emulation EXT  
**Sinclair C Pride 7X34 K325**  
N Bar Clova Pride F1100

Sinclair Boss  
Sinclair Lady Ida 70C7 2V11  
N Bar Emulation Ext A1747  
Sinclair Lady Ida 04F3 B154  
Emulation N Bar 5522  
N Bar Primrose 2424  
N Bar Ballot Z104 Y2837  
N Bar Clova Pride D1356

Individual	Actual Birth Wt	92		
	Adj. Weaning Wt	635		
	Adj. Yearling Wt	1158		
Inbreeding Coefficient: 12.72%				
EPDs	CED	2	Milk	23
	BW	2.0	\$W	35.26
	WW	45	\$EN	-4.54
	YW	85		

⚡ This bull has a 12 year- old mother who has calved every 368 days and has an average wean ratio of 105. This muscular bull will work on both ends- he will put weight where it pays the most and leave replacement females that are hard to beat. Lot 7 has a wean ratio of 104 and yearling ratio of 108. The mother of lot 7 has had mostly heifers and they all work and do well, very strong cow family that will be around for a long time. Give this proud bull a chance on your ranch.





# **LOT 8** *Sinclair Broker 8RC5*

BULL 19364731 DOB: 01/30/18 TATTOO: 8RC5

R R Rito 707  
**Sinclair Entrepreneur 8R101**  
 N Bar Kinochtry Beauty Z1925  
 Sinclair Rito Legacy 3R9  
**Sinclair Lady 7RL30 1C8**  
 Sinclair Lady 1C8 4465

Rito N Bar  
 Eriskay of Rollin Rock 3  
 N Bar Emulation EXT  
 N Bar Kinochtry Beauty 4310  
 R R Rito 707  
 Ideal 4465 of 6807 4286  
 Papa Rito T Intense DHD 6844  
 Ideal 4465 of 6807 4286

Individual	Actual Birth Wt	92		
	Adj. Weaning Wt	614		
	Adj. Yearling Wt	1019		
Inbreeding Coefficient: 6.25%				
EPDs	CED	-1	Milk	15
	BW	2.7	\$W	28.26
	WW	42	\$EN	14.28
	YW	70		

Stout, stout, stout. Heck, that is what I would expect from a herd sire bred the way lot 8 is. With muscle in an efficient package, grab ahold of this bull to make wide based progeny that provide pay-weight. Take a look at his sister who is lot 117.



Sinclair Lady 7RL30 1C8

# **LOT 9** *Sinclair Line- RX 8RB5*

BULL 19281324 DOB: 03/09/18 TATTOO: 8RB5

Sinclair Rito 2R1  
**Sinclair Rito 4RX3**  
 Sinclair Q Mother 1XX13 7R4  
 Sinclair MT Time 2P77  
**Sinclair C Pride 9PU4 7X34**  
 Sinclair C Pride 7X34 K325

Rito Revolve OR5  
 N Bar Miss Emulous A404  
 Sinclair Emulation XXP  
 Sinclair Q Mother 7R4 E008  
 N Bar Prime Time D806  
 N Bar Enchantress 4906  
 N Bar Emulation EXT  
 N Bar Clova Pride F1100

Individual	Actual Birth Wt	76		
	Adj. Weaning Wt	674		
	Adj. Yearling Wt	1077		
Inbreeding Coefficient: 9.27%				
EPDs	CED	9	Milk	21
	BW	-1.3	\$W	35.35
	WW	38	\$EN	5.22
	YW	68		

Calving ease bull from the same cow family as lot 7. I told you all her daughters work. Good sound feet and udders that never go bad and look very pretty are all thru out the pedigree of this fluid rascal. Lots of libido running thru this guy, take him home and put him to work. A no holes product from a program with a direction.



Sinclair Entrepreneur 8R101



N Bar Miss Emulous A404 "D80"







10



12

**LOT 10** **Sinclair Extreme 8VA8**  
BULL 19380701 DOB: 2/11/18 TATTOO: 8VA8

N Bar Emulation Ext A1747  
**Sinclair Extreme 4V2**  
N Bar Kinchtry Beauty 4339

Cole Creek Cedar Ridge 1V  
**Sinclair Primrose 6CR4 4SR3**  
Sinclair Primrose 4SR3 1TL3

N Bar Emulation EXT  
N Bar Clova Pride U3031  
O C C Exodus 712E  
N Bar Kinchtry Beauty 2434  
Cole Creek Black Cedar 46P  
Cole Creek Clovanada 49S  
Sinclair Shadow Rider 9534  
Sinclair Primrose 1TL3 9XV1

Individual	Actual Birth Wt	83
	Adj. Weaning Wt	636
	Adj. Yearling Wt	1128
	Inbreeding Coefficient:	3.92%
EPDs	CED	9
	Milk	24
	BW	-1.7
	\$W	47.14
	WW	43
	\$EN	1.64
	YW	67

Here is a thick bull from an eye- catching young cow. Do you need fleshing ability? Well here is your guy. Look at all the time proven genetics in lot 10.

**LOT 12** **Sinclair X- Plus 8XX4**  
BULL 19369969 DOB: 01/19/18 TATTOO: 8XX4

N Bar Emulation EXT  
**Sinclair Emulation XXP**  
N Bar Primrose Y3051

Emulation N Bar 5522  
N Bar Primrose 2424  
N Bar Emulation EXT  
N Bar Primrose 2429  
Rito N Bar  
Eriskay of Rollin Rock 3  
N Bar Emulation EXT  
N Bar Kinchtry Beauty 4310

R R Rito 707  
**Sinclair K Bty 9R106 E118**  
N Bar Kinchtry Beauty Z1925

Individual	Actual Birth Wt	86
	Adj. Weaning Wt	619
	Adj. Yearling Wt	1193
	Inbreeding Coefficient:	10.35%
EPDs	CED	1
	Milk	14
	BW	1.4
	\$W	35.43
	WW	50
	\$EN	7.17
	YW	84

Long made with classic style, this XXP son will help you out by providing weight where it pays the most, (length and thickness). Lot 12 comes from a full sister to Sinclair Entrepreneur 8R101, he has worked well for folks in both North and South America.

**LOT 11** **Sinclair Rugged 8TR2**  
BULL 19368920 DOB: 02/14/18 TATTOO: 8TR2

O C C Backstop 888B  
**O C C Eureka 865E**  
Blackbird of R R 1204

Sinclair Rito Legacy 3R9  
**Sinclair Lady 7RL30 1C8**  
Sinclair Lady 1C8 4465

D H D Traveler 6807  
Revolution Rose of R R 9239  
PBC 707 1M F0203  
Blackbird of R R 7023  
R R Rito 707  
Ideal 4465 of 6807 4286  
Papa Rito T Intense DHD 6844  
Ideal 4465 of 6807 4286

Individual	Actual Birth Wt	92
	Adj. Weaning Wt	563
	Adj. Yearling Wt	963
	Inbreeding Coefficient:	8.30%
EPDs	CED	4
	Milk	23
	BW	2.0
	\$W	40.98
	WW	38
	\$EN	12.15
	YW	58

Well here is something you don't see every day. This rugged OCC Eureka son from the crowd pleasing 7RL30 matron is sure to provide easy keeping productive progeny. Lot 11 is from the same cow as lot 8.



Sinclair Lady 7RL30 1C8



O C C Eureka 865E





**LOT 13** **Sinclair Black Iron 8UR7**  
BULL 19169657 DOB: 02/16/18 TATTOO: 8UR7

Sinclair Executive 9XV2  
**Sinclair Exactly 4U2**  
Sinclair Lady 0R109 03S3

N Bar Emulation Ext A1747  
**Sinclair Ms Emulous 2V20 A40**  
N Bar Miss Emulous X3091

N Bar Emulation Ext V722  
N Bar Primrose Y3051  
R R Rito 707  
Sinclair Lady 03S3 4465  
N Bar Emulation EXT  
N Bar Clova Pride U3031  
N Bar Emulation EXT  
N Bar Miss Emulous 4709

Individual	Actual Birth Wt	80
	Adj. Weaning Wt	623
	Adj. Yearling Wt	1252
	Inbreeding Coefficient:	9.77%
EPDs	CED	4
	Milk	16
	BW	.7
	SW	37.00
	WW	46
	SEN	9.08
	YW	74

Here is a thick muscular bull that combines the high growth EXT son, A1747 with the high maternal Miss Emulous cow family. Any bull with A40 (maternal grand dam) this close will work and work well. Look how he shot from an 80 pound birth weight to a yearling weight of 1252 to ratio 119. Better than the grow is the maternal capabilities he can sow. This bull combines the Primrose and Miss Emulous cow families very well into a producer friendly package ready to help you!

**LOT 14** **Sinclair Express 8V11**  
BULL 19169703 DOB: 02/13/18 TATTOO: 8V11

N Bar Emulation EXT  
**N Bar Emulation Ext A1747**  
N Bar Clova Pride U3031

N Bar Emulation EXT  
**Sinclair Donna 3X21 322**  
Brooks Donna 322

Emulation N Bar 5522  
N Bar Primrose 2424  
N Bar Trademark 1949  
N Bar Clova Pride 7356  
Emulation N Bar 5522  
N Bar Primrose 2424  
D H D Traveler 6807  
A A R Donna 1853

Individual	Actual Birth Wt	90
	Adj. Weaning Wt	596
	Adj. Yearling Wt	1082
	Inbreeding Coefficient:	14.06%
EPDs	CED	2
	Milk	23
	BW	1.9
	SW	36.25
	WW	42
	SEN	0.81
	YW	72

Look at the muscle and good type in this bull. Fertility and longevity with pounds that pay from the Donna cow family.



N Bar Miss Emulous X3091 "A40"

**LOT 15** **Sinclair Emulation 8FT5**  
BULL 19168720 DOB: 01/31/18 TATTOO: 8FT5

Sinclair Emulation 0F4  
**Sinclair Emulation 4FX1**  
Sinclair M Emulous 4ET1 D47

Sinclair Promise 4RP15  
**Sinclair Lady Ida 6RE1 0V1**  
Sinclair Lady Ida 0V1 2M1

Emulation N Bar 5522  
N Bar Kinochtry Bty SCC 2V3  
N Bar Explosion TNT  
N Bar Miss Emulous B514  
Sinclair Rito Promise 0R12  
Sinclair Eriskay 5E3 2N11  
N Bar Emulation Ext A1747  
N Bar Lady Ida S C C 2M1

Individual	Actual Birth Wt	54
	Adj. Weaning Wt	633
	Adj. Yearling Wt	1097
	Inbreeding Coefficient:	5.86%
EPDs	CED	13
	Milk	23
	BW	-3.3
	SW	42.02
	WW	40
	SEN	2.12
	YW	69

Calving ease bull with substance and style. I see the two closest cows beyond lot 15's mother are still producing into their teens and doing it very well. Lots of longevity and fertility bred into this bull.





**LOT  
16****Sinclair Emulation 8FT2**

BULL 19168718

DOB: 01/28/18

TATTOO: 8FT2

Sinclair Emulation 0F4  
**Sinclair Emulation 4FX1**  
 Sinclair M Emulous 4ET1 D47

Emulation N Bar 5522  
 N Bar Kinochtry Bty SCC 2V3  
 N Bar Explosion TNT  
 N Bar Miss Emulous B514  
 N Bar Emulation Ext V722  
 N Bar Primrose Y3051  
 Sinclair Rito 2R1  
 Sinclair Delia 1FE18 404

Individual	Actual Birth Wt	60		
	Adj. Weaning Wt	652		
	Adj. Yearling Wt	1086		
Inbreeding Coefficient: 11.73%				
EPDs	CED	15	Milk	21
	BW	-3.7	\$W	42.48
	WW	41	\$EN	5.65
	YW	67		

Sinclair Executive 9XV2  
**Sinclair Delia 6U43 4RX2**  
 Sinclair Delia 4RX2 1FE18

☞ Same story -lots of fertility and longevity backing up the dam of this bull. Plus, don't forget our bulls are not fed to be overly fat but rather they are developed to provide you with years of service.

**19****LOT  
17****Sinclair Rollin Coal 8K10**

BULL 19169645

DOB: 02/18/18

TATTOO: 8K10

Sinclair Entrepreneur 8R101  
**Sinclair Broker 3RC33**  
 Sinclair Lady Ida 8XV12 C52

R R Rito 707  
 N Bar Kinochtry Beauty Z1925  
 N Bar Emulation Ext V722  
 N Bar Lady Ida Z1453  
 N Bar Emulation EXT  
 Dixie Erica of C H 1019  
 Gardens Transition 7205 S1  
 S C C Enchantress 3F3 X412

Individual	Actual Birth Wt	81		
	Adj. Weaning Wt	604		
	Adj. Yearling Wt	1150		
Inbreeding Coefficient: 5.81%				
EPDs	CED	8	Milk	20
	BW	-1.0	\$W	39.49
	WW	41	\$EN	7.4
	YW	66		

O C C Great Plains 943G  
**Sinclair Enchantress 00C2**  
 Sinclair Enchantress SGT2

☞ Here is a calving ease bull that grew well, this bull comes from a 9 year-old dam that averages 79 pounds at birth on her calves and has a calving interval of 363 days. Lot 17 had a wean ratio of 109 and a yearling ratio of 109. Please remember our bulls are guaranteed for their first breeding season, we stand behind our bulls and want you to be happy.

**LOT  
19****Sinclair Express 8V1**

BULL 19364719

DOB: 01/14/18

TATTOO: 8V1

N Bar Emulation EXT  
**N Bar Emulation Ext A1747**  
 N Bar Clova Pride U3031



Emulation N Bar 5522  
**S C C Enchantress 3F2 X412**  
 N Bar Enchantress 4908

Emulation N Bar 5522  
 N Bar Primrose 2424  
 N Bar Trademark 1949  
 N Bar Clova Pride 7356  
 Emulation 31  
 Ankony 8F78 Lass 8F275  
 Basin Emulation 5953  
 Coffey Enchantress 424

Individual	Actual Birth Wt	84		
	Adj. Weaning Wt	634		
	Adj. Yearling Wt	1156		
Inbreeding Coefficient: 10.60%				
EPDs	CED	1	Milk	21
	BW	.4	\$W	30.41
	WW	33	\$EN	10.68
	YW	54		

☞ Fluid moving bull that comes from the same mother as lot 1, you remember Sam don't you? Anyway, this bull offers you a chance at maternal genetics that will add pay-weight.

**LOT  
18****Sinclair Rollin Hills 8KF5**

BULL 19275396

DOB: 03/08/18

TATTOO: 8KF5

Sinclair Broker 3RC33  
**Sinclair Rollin Coal 5K2**  
 Sinclair Ms Emulous 1FE23

Sinclair Entrepreneur 8R101  
 Sinclair Lady Ida 8XV12 C52  
 Sinclair Emulation 5522 XP  
 Sinclair Ms Emulous 8F11  
 Sinclair IN Time 6BT39  
 Sinclair Blackbird 2P8 7079  
 Sinclair MT Time 2P77  
 Sinclair Lady Ida 70C7 2V11

Individual	Actual Birth Wt	58		
	Adj. Weaning Wt	527		
	Adj. Yearling Wt	1207		
Inbreeding Coefficient: 7.74%				
EPDs	CED	13	Milk	19
	BW	-4.2	\$W	16.84
	WW	19	\$EN	19.68
	YW	40		

Sinclair Timeless 8BA4  
**Sinclair Lady Ida 6TL1 2PU13**  
 Sinclair Lady Ida 2PU13 70C7

☞ Super Duper calving ease bull from a typey young mother. Look here for calving ease with a good combination of efficient maternal genetics.



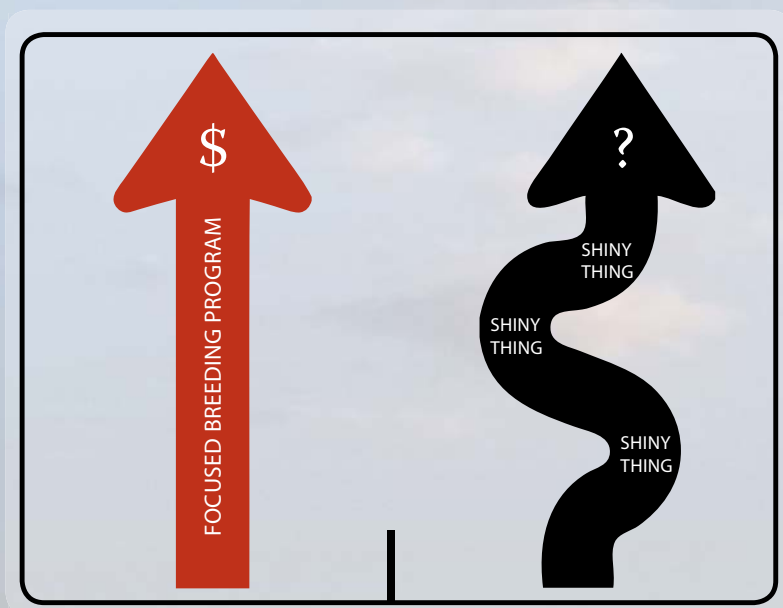
N Bar Emulation Ext A1747



S C C Enchantress 3F2 X412



***Do you  
need a more  
direct path  
to profit?***



### **Inbreeding Coefficient**

The standard (mathematical) measure for the level of inbreeding is the Inbreeding Coefficient. It indicates the probability (between 0% and 100%) that genes at a randomly chosen location in the DNA are identical by descent. The technique assumes that there are 2 forms of a gene and that each form has an equal chance to be passed on to the next generation.

Linebred cattle breed true because they possess more homozygous or identical gene pairs. The Inbreeding Coefficient measures the probability of the traits we have selected for and fixed thru linebreeding to be displayed.

In essence we have ran the "sorting gate" on the genes. By increasing homozygosity we have an increased rate of the desirable genes and less of the undesirable genes. We have bore the cost of sorting the undesirables away and have saved the opportunities of the desirables to be displayed in our customers herds.



**LOT  
20**

## Sinclair Rito 8VR1

BULL 19250090

DOB: 02/13/18

TATTOO: 8VR1

Rito 2100 G D A R

**V D A R Rito 953**

Miss Wix 903 of Mc Cumber

Sinclair Emulation XXP

**Sinclair Q Mother 1XX13 7R4**

Sinclair Q Mother 7R4 E008

Rito Ever 865 G D A R

Blackcap Lady 999 G D A R

Rito 054 G D A R

Miss Wix 365 of Mc Cumber

N Bar Emulation EXT

N Bar Primrose Y3051

Rito Revolve OR5

N Bar Queen Mother 9955F

Individual	Actual Birth Wt	90		
	Adj. Weaning Wt	570		
	Adj. Yearling Wt	1183		
Inbreeding Coefficient: 0.39%				
EPDs	CED	0	Milk	24
	BW	1.9	\$W	31.53
	WW	37	\$EN	1.64
	YW	67		

⚡ Please come to our sale and check out this bull, he is all sorts of long and thick. His sire is noted for making females that last and last. The mother of lot 20 is an easy keeping long made cow with a very tidy udder. She is also the mother of our herd sire 4RX3. Good stuff here.



V D A R Rito 953

**LOT  
22**

## Sinclair Express 8V21

BULL 19169713

DOB: 02/24/18

TATTOO: 8V21

N Bar Emulation EXT

**N Bar Emulation Ext A1747**

N Bar Clova Pride U3031

N Bar Emulation EXT

**Sinclair Lady 0X16 3M19**

Sinclair Lady 3M19 4465

Emulation N Bar 5522

N Bar Primrose 2424

N Bar Trademark 1949

N Bar Clova Pride 7356

Emulation N Bar 5522

N Bar Primrose 2424

N Bar Moderation 9957

Ideal 4465 of 6807 4286

Individual	Actual Birth Wt	94		
	Adj. Weaning Wt	661		
	Adj. Yearling Wt	1290		
Inbreeding Coefficient: 15.09%				
EPDs	CED	-4	Milk	23
	BW	3.2	\$W	45.44
	WW	55	\$EN	-5.83
	YW	91		

⚡ Top end growth displayed by this N Bar Emulation EXT grandson out of an EXT daughter. These A1747 sons move well and have a lot to offer. For example, lot 22 has a weaning ratio of 119 and yearling ratio of 122, the mother of this bull is the easy keeping kind from the Lady family. By nature of our breeding program the benefits of this linebred bull won't be a fluke but rather the results of a focused breeding program and as a plus he wasn't artificially propped up by creep feed.

**LOT  
23**

## Sinclair Practical 8QR6

BULL 19166659

DOB: 03/08/18

TATTOO: 8QR6

Q A S Traveler 23-4

**Sinclair Traveler 6Q1**

Rito Majesty 5A61 of F0203

N Bar Emulation Ext A1747

**Sinclair Edella 2V5 9JP9**

Sinclair Edella 9JP9 7RL46

Band 234 of Ideal 3163

Q A S Blackbird Eve 601 1

PBC 707 1M F0203

B A F Excel Lady 2104

N Bar Emulation EXT

N Bar Clova Pride U3031

Dunlouse Jipsey Earl E161

Sinclair Edella 7RL46 3X96

Individual	Actual Birth Wt	92		
	Adj. Weaning Wt	558		
	Adj. Yearling Wt	1048		
Inbreeding Coefficient: 1.03%				
EPDs	CED	-1	Milk	23
	BW	2.7	\$W	30.31
	WW	35	\$EN	8.55
	YW	54		

⚡ Range Savvy genetics here from an own son of Traveler 23-4, out of a sound uddered and sound footed cow



Q A S Traveler 23-4

**LOT  
21**

## Sinclair Rito 8VR2

BULL 19250082

DOB: 02/23/18

TATTOO: 8VR2

Rito 2100 G D A R

**V D A R Rito 953**

Miss Wix 903 of Mc Cumber

N Bar Emulation 5522 4245A

**Sinclair Lady 4FC3 2TL3**

Sinclair Lady 2TL3 0X4

Rito Ever 865 G D A R

Blackcap Lady 999 G D A R

Rito 054 G D A R

Miss Wix 365 of Mc Cumber

Emulation N Bar 5522

Coffey Enchantress 424

Sinclair Timeless 8BA4

Sinclair Lady 0X4 3M19

Individual	Actual Birth Wt	90		
	Adj. Weaning Wt	591		
	Adj. Yearling Wt	1106		
Inbreeding Coefficient: 0.20%				
EPDs	CED	-1	Milk	28
	BW	1.2	\$W	29.07
	WW	29	\$EN	0.87
	YW	56		

⚡ Another Rito 953 son here from a very productive mother. This bull has generations of the traits ranchers need to be in business.

**LOT  
24**

## Sinclair Practical 8QR8

BULL 19166661

DOB: 03/28/18

TATTOO: 8QR8

Q A S Traveler 23-4

**Sinclair Traveler 6Q1**

Rito Majesty 5A61 of F0203

N Bar Emulation Ext A1747

**Sinclair Ms Emulous 0V5**

Sinclair Ms Emulous 7td11

Band 234 of Ideal 3163

Q A S Blackbird Eve 601 1

PBC 707 1M F0203

B A F Excel Lady 2104

N Bar Emulation EXT

N Bar Clova Pride U3031

Vance Top Dawg

N Bar Miss Emulous A404

Individual	Actual Birth Wt	82		
	Adj. Weaning Wt	527		
	Adj. Yearling Wt	1012		
Inbreeding Coefficient: 0.00%				
EPDs	CED	5	Milk	20
	BW	.3	\$W	28.07
	WW	32	\$EN	12.11
	YW	55		

⚡ Lots 23 and 24 are ¾ brothers and will make you a nice set of uniform calves.





**LOT 25** **Sinclair Foreman 8L15**  
BULL 19169676 DOB: 02/18/18 TATTOO: 8L15

Sinclair Patriarch 3B47  
**Sinclair Plains Boss 5B02**  
Sinclair Lady Ida 7V19 04F3

Emulation 31  
**Sinclair Enchantress 9A37**  
Sinclair Enchantress 7P14

Sinclair Boss  
Sinclair Lady Ida 70C7 2V11  
N Bar Emulation Ext A1747  
Sinclair Lady Ida 04F3 B154  
F C R Elation Lad 652  
Miss Emulous 243  
N Bar Prime Time D806  
Sinclair Enchantress 5B71

Individual	Actual Birth Wt	84
	Adj. Weaning Wt	540
	Adj. Yearling Wt	1153
Inbreeding Coefficient: 10.94%		
EPDs	CED	7
	Milk	20
	BW	-2
	\$W	35.01
	WW	40
	SEN	5.66
	YW	70

Low birth option from a solid 10 year- old cow that calves on time every year and averages 78 pounds at birth on her calves over her career. Are you a low input or a no input operation? Take a look at this bull.

**LOT 27** **Sinclair Foreman 8L24**  
BULL 19169640 DOB: 02/27/18 TATTOO: 8L24

Sinclair Patriarch 3B47  
**Sinclair Plains Boss 5B02**  
Sinclair Lady Ida 7V19 04F3

Rito Revolve OR5  
**Sinclair Lady 4R1 7X25**  
Sinclair Lady Ida 7X25 B154

Sinclair Boss  
Sinclair Lady Ida 70C7 2V11  
N Bar Emulation Ext A1747  
Sinclair Lady Ida 04F3 B154  
R R Rito 707  
Ideal 1456 of 8103 8114  
N Bar Emulation EXT  
N Bar Lady Ida X2912

Individual	Actual Birth Wt	86
	Adj. Weaning Wt	586
	Adj. Yearling Wt	1167
Inbreeding Coefficient: 9.96%		
EPDs	CED	2
	Milk	17
	BW	1.7
	\$W	33.45
	WW	48
	SEN	2.03
	YW	87

Bulls made like lot 27 makes daughters that can with stand the rigors of the ranching world. I know you have some challenges that your cows must endure. Make some cows with our bulls and reap the benefits.

**LOT 26** **Sinclair Foreman 8L18**  
BULL 19169679 DOB: 02/22/18 TATTOO: 8L18

Sinclair Patriarch 3B47  
**Sinclair Plains Boss 5B02**  
Sinclair Lady Ida 7V19 04F3

Sinclair Emulation 5522 XP  
**Sinclair Ms Emulous 2FE42**  
Sinclair Ms Emulous 7rt1 a40

Sinclair Boss  
Sinclair Lady Ida 70C7 2V11  
N Bar Emulation Ext A1747  
Sinclair Lady Ida 04F3 B154  
Emulation N Bar 5522  
N Bar Primrose Y3051  
Leachman Right Time  
N Bar Miss Emulous X3091

Individual	Actual Birth Wt	90
	Adj. Weaning Wt	597
	Adj. Yearling Wt	1031
Inbreeding Coefficient: 13.90%		
EPDs	CED	3
	Milk	19
	BW	1.3
	\$W	36.19
	WW	46
	SEN	2.13
	YW	81

Do you need capacity with maternal qualities bred in? Lot 26 comes from a big ribbed cow that does her job on her own.

**LOT 28** **Sinclair Foreman 8L4**  
BULL 19168749 DOB: 02/03/18 TATTOO: 8L4

Sinclair Patriarch 3B47  
**Sinclair Plains Boss 5B02**  
Sinclair Lady Ida 7V19 04F3

Sinclair X-Changer 2FE9  
**Sinclair Enchantress 6RA8**  
Sinclair Enchantress 7RL3

Sinclair Boss  
Sinclair Lady Ida 70C7 2V11  
N Bar Emulation Ext A1747  
Sinclair Lady Ida 04F3 B154  
Sinclair Emulation 5522 XP  
Sinclair Blackie 7V3 2P18  
Sinclair Rito Legacy 3R9  
Sinclair Enchantress 5P79

Individual	Actual Birth Wt	76
	Adj. Weaning Wt	594
	Adj. Yearling Wt	1170
Inbreeding Coefficient: 8.70%		
EPDs	CED	5
	Milk	21
	BW	1.0
	\$W	39.40
	WW	47
	SEN	-1.38
	YW	83

Look here for a bull that combines low birth weight from a cow that blends Rito Revolve OR5 and a full sister to Sinclair Emulation XXP. Remember we deliver, need this bull, but are a long ways away, we can get him to you.



**LOT 29** **Sinclair Foreman 8L6**  
BULL 19168751 DOB: 02/05/18 TATTOO: 8L6

Sinclair Patriarch 3B47  
**Sinclair Plains Boss 5B02**  
Sinclair Lady Ida 7V19 04F3

Sinclair Emperor 0XT51  
**Sinclair Ms Emulous 6X03**  
Sinclair Ms Emulous 2RL5 D80

Sinclair Boss  
Sinclair Lady Ida 70C7 2V11  
N Bar Emulation Ext A1747  
Sinclair Lady Ida 04F3 B154  
Sinclair Extra 4X13  
Sinclair Blkbird 70C10 J472  
Sinclair Rito Legacy 3R9  
N Bar Miss Emulous A404

Individual	Actual Birth Wt	62
	Adj. Weaning Wt	597
	Adj. Yearling Wt	1039
Inbreeding Coefficient: 9.85%		
EPDs	CED	13
	Milk	21
	BW	-2.5
	\$W	37.26
	WW	39
	SEN	3.91
	YW	71

Calving ease bull that will breed a lot of cows and leave you some awesome daughters. This bull along with his brothers will be an udder fixer!





**LOT 33** **Sinclair Preview 8TA17**  
 BULL 19373672 DOB: 03/15/18 TATTOO: 8TA17

Sinclair Timeless 8BA4  
**Sinclair Preview 2TL6**  
 Sinclair K Bty 0A3 7XT55

Sinclair Vision 3SX12  
**Sinclair Lady Ida 5SX8 5PV38**  
 Sinclair Lady Ida 5PV38 B154

Sinclair IN Time 6BT39  
 Sinclair Blackbird 2P8 7079  
 Emulation 31  
 Sinclair K Bty 7xt55 B345  
 Sinclair Vision X 8S7  
 Sinclair K Bty 0F1 2V3  
 Sinclair Net Present Value  
 N Bar Lady Ida X2912

Individual	Actual Birth Wt	78
	Adj. Weaning Wt	621
	Adj. Yearling Wt	1136
<b>Inbreeding Coefficient: 9.71%</b>		
EPDs	CED	10
	BW	-7
	WW	32
	YW	43

Calving ease bull from a very good cow family.

**LOT 30** **Sinclair Foreman 8L29**  
 BULL 19283927 DOB: 02/17/18 TATTOO: 8L29

Sinclair Patriarch 3B47  
**Sinclair Plains Boss 5B02**  
 Sinclair Lady Ida 7V19 04F3

Sinclair Emulation 5522 XP  
**Sinclair Lady 1FE24 9XT69**  
 Sinclair Lady 9XT69 3M19

Sinclair Boss  
 Sinclair Lady Ida 70C7 2V11  
 N Bar Emulation Ext A1747  
 Sinclair Lady Ida 04F3 B154  
 Emulation N Bar 5522  
 N Bar Primrose Y3051  
 Sinclair Extra 4X13  
 Sinclair Lady 3M19 4465

Individual	Actual Birth Wt	73
	Adj. Weaning Wt	632
	Adj. Yearling Wt	1147
<b>Inbreeding Coefficient: 11.16%</b>		
EPDs	CED	7
	BW	-1
	WW	49
	YW	88

Fertility with production, fits this bull. The dam of this bull has a calving interval of 363 days and an average wean ratio of 104. Look at this calving ease bull to provide you with years of service and daughters that will work hard for you.



Sinclair Lady Ida 5PV38 B154

**LOT 31** **Sinclair Foreman 8L14**  
 BULL 19169675 DOB: 02/18/18 TATTOO: 8L14

Sinclair Patriarch 3B47  
**Sinclair Plains Boss 5B02**  
 Sinclair Lady Ida 7V19 04F3

Emulation 31  
**Sinclair K Bty 1A5 9R105**  
 Sinclair K Bty 9R105 E118

Sinclair Boss  
 Sinclair Lady Ida 70C7 2V11  
 N Bar Emulation Ext A1747  
 Sinclair Lady Ida 04F3 B154  
 F C R Elation Lad 652  
 Miss Emulous 243  
 R R Rito 707  
 N Bar Kinchtry Beauty Z1925

Individual	Actual Birth Wt	92
	Adj. Weaning Wt	606
	Adj. Yearling Wt	1070
<b>Inbreeding Coefficient: 8.50%</b>		
EPDs	CED	4
	BW	1.4
	WW	41
	YW	71

Nice bull here from a cow that loves her babies. The mothering instinct will be strong in this one. The dam of lot 31 is a very pretty cow that has a calving interval of 365 days and an average wean ratio of 105.

**LOT 34** **Sinclair Executive 8Y4**  
 BULL 19279806 DOB: 03/05/18 TATTOO: 8Y4

Sinclair Executive 9XV2  
**Sinclair Executive 6U31**  
 Sinclair Enchantress 0FE14

Sinclair Emulate 7XT28  
**Sinclair Lady Ida 2D31 5PV42**  
 Sinclair Lady Ida 5PV42 B154

N Bar Emulation Ext V722  
 N Bar Primrose Y3051  
 Sinclair Emulation 5522 XP  
 Sinclair Enchantress 7PS2  
 Sinclair Extra 4X13  
 Sinclair Blackbird 20F3 6417  
 Sinclair Net Present Value  
 N Bar Lady Ida X2912

Individual	Actual Birth Wt	74
	Adj. Weaning Wt	556
	Adj. Yearling Wt	1049
<b>Inbreeding Coefficient: 10.01%</b>		
EPDs	CED	9
	BW	-1.5
	WW	33
	YW	57

Low birth weight bull from an easy keeping 7 year-old cow that knows how to work for a living. Use this bull to make soggy steer calves and angular daughters.

**LOT 32** **Sinclair Dynasty 8WC3**  
 BULL 19281295 DOB: 03/04/18 TATTOO: 8WC3

Wandering CRK Dynasty JRM 2F  
**Sinclair Dynasty 3WCD7**  
 Sinclair Eriskay 2N1 7883

Sinclair Vision 3SX12  
**Sinclair K Bty 5SX3 6E4**  
 Sinclair K Bty 6E4 A3

Eston Encounter M G 55 71  
 Rose G V 37U  
 D H D Traveler 6807  
 Papa Eriskay 7883  
 Sinclair Vision X 8S7  
 Sinclair K Bty 0F1 2V3  
 N Bar Explosion  
 N Bar Kinchtry Beauty Y3881

Individual	Actual Birth Wt	76
	Adj. Weaning Wt	547
	Adj. Yearling Wt	989
<b>Inbreeding Coefficient: 0.24%</b>		
EPDs	CED	10
	BW	-1.6
	WW	30
	YW	49

Good calving ease bull here bred for generations of low birth and substance.

Relative Economic Weights for  
Traditional Beef Firm

Reproduction:  
Growth: End Product

10: 5: 1

(Melton '95)





35

## LOT 38 Sinclair Preview 8TA8

BULL 19281305

DOB: 03/12/18

TATTOO: 8TA8

Sinclair Timeless 8BA4  
Sinclair Preview 2TL6  
Sinclair K Bty 0A3 7XT55

Sinclair IN Time 6BT39  
Sinclair Blackbird 2P8 7079  
Emulation 31  
Sinclair K Bty 7xt55 B345  
N Bar Emulation Ext V722  
N Bar Primrose Y3051  
Emulation 31  
Sinclair K Bty 9XT29 11P3

Individual	Actual Birth Wt	78		
	Adj. Weaning Wt	530		
	Adj. Yearling Wt	1023		
Inbreeding Coefficient: 12.32%				
EPDs	CED	9	Milk	22
	BW	-2.2	\$W	30.85
	WW	25	\$EN	17.77
	YW	35		

Calving ease bull from a good young cow from a beautiful Emulation 31 daughter. Timeless genetics proven over time.

## LOT 35 Sinclair Executive 8Y5

BULL 19281294

DOB: 03/08/18

TATTOO: 8Y5

Sinclair Executive 9XV2  
Sinclair Executive 6U31  
Sinclair Enchantress 0FE14

Sinclair Vision 3SX12  
Sinclair K Bty 55X2 0BA30  
Sinclair K Bty 0BA30 5P65

N Bar Emulation Ext V722  
N Bar Primrose Y3051  
Sinclair Emulation 5522 XP  
Sinclair Enchantress 7PS2  
Sinclair Vision X 8S7  
Sinclair K Bty 0F1 2V3  
Sinclair IN Time 6BT39  
Sinclair K Bty 5P65 2S24

Individual	Actual Birth Wt	76		
	Adj. Weaning Wt	610		
	Adj. Yearling Wt	1156		
Inbreeding Coefficient: 12.33%				
EPDs	CED	10	Milk	23
	BW	-1.7	\$W	30.91
	WW	29	\$EN	9.82
	YW	51		

Calving ease bull that will let you sleep all night from a nice young cow.



Sinclair Executive 9XV2

## LOT 36 Sinclair Preview 8TA9

BULL 19281300

DOB: 03/15/18

TATTOO: 8TA9

Sinclair Timeless 8BA4  
Sinclair Preview 2TL6  
Sinclair K Bty 0A3 7XT55

Sinclair Executive 9XV2  
Sinclair Blkbird 5U20 3VB6  
Sinclair Blkbird 3VB6 0P29

Sinclair IN Time 6BT39  
Sinclair Blackbird 2P8 7079  
Emulation 31  
Sinclair K Bty 7xt55 B345  
N Bar Emulation Ext V722  
N Bar Primrose Y3051  
Sinclair Express 6V47  
Sinclair Blkbird 0P29 F188

Individual	Actual Birth Wt	80		
	Adj. Weaning Wt	621		
	Adj. Yearling Wt	1234		
Inbreeding Coefficient: 9.45%				
EPDs	CED	7	Milk	20
	BW	-1.5	\$W	47.86
	WW	43	\$EN	11.92
	YW	64		

Calving ease bull from a productive young Sinclair Executive 9XV2 daughter.

## LOT 39 Sinclair Easy Time 8TG3

BULL 19281302

DOB: 03/11/18

TATTOO: 8TG3

Sinclair Timeless 8BA4  
Sinclair Sun Dial 5TL43  
Sinclair Primrose 1G13 6E11

Sinclair Executive 9XV2  
Sinclair Blkbird 5U34 0P29  
Sinclair Blkbird 0P29 F188

Sinclair IN Time 6BT39  
Sinclair Blackbird 2P8 7079  
Sinclair Grass Master  
Sinclair Primrose 6E11 Z194  
N Bar Emulation Ext V722  
N Bar Primrose Y3051  
N Bar Prime Time D806  
N Bar Blackbird V726

Individual	Actual Birth Wt	75		
	Adj. Weaning Wt	564		
	Adj. Yearling Wt	1162		
Inbreeding Coefficient:		10.88%		
EPDs	CED	12	Milk	29
	BW	-2.2	\$W	37.28
	WW	31	\$EN	-1.38
	YW	58		

This bull was bred to be a calving ease bull with volume and leave daughters that are flat good.

## LOT 37 Sinclair Preview 8TA16

BULL 19363991

DOB: 03/06/18

TATTOO: 8TA16

Sinclair Timeless 8BA4  
Sinclair Preview 2TL6  
Sinclair K Bty 0A3 7XT55

Sinclair Executive 9XV2  
LJ Blkbird 5U0 9FH2  
Sinclair Blkbird 9FH2 7PV6

Sinclair IN Time 6BT39  
Sinclair Blackbird 2P8 7079  
Emulation 31  
Sinclair K Bty 7xt55 B345  
N Bar Emulation Ext V722  
N Bar Primrose Y3051  
Sinclair Emulation Exp 7F3  
Sinclair Blkbird 7PV6 G238

Individual	Actual Birth Wt	75		
	Adj. Weaning Wt	576		
	Adj. Yearling Wt	1130		
Inbreeding Coefficient: 8.15%				
EPDs	CED	10	Milk	23
	BW	-2.8	\$W	35.66
	WW	29	\$EN	13.15
	YW	43		

Calving ease bull. The sire of this lot is a breeding machine and has bred a LOT of cows naturally.

## LOT 40 Sinclair Easy Time 8TG6

BULL 19279890

DOB: 03/26/18

TATTOO: 8TG6

Sinclair Timeless 8BA4  
Sinclair Sun Dial 5TL43  
Sinclair Primrose 1G13 6E11

Sinclair Patriarch 3B47  
Sinclair K Bty 5B07 8XE8  
Sinclair K Bty 8XE8 5R2

Sinclair IN Time 6BT39  
Sinclair Blackbird 2P8 7079  
Sinclair Grass Master  
Sinclair Primrose 6E11 Z194  
Sinclair Boss  
Sinclair Lady Ida 70C7 2V11  
Sinclair Excellency 5X25  
Sinclair K Bty 5R2 J208

Individual	Actual Birth Wt	68		
	Adj. Weaning Wt	567		
	Adj. Yearling Wt	1037		
Inbreeding Coefficient: 7.98%				
EPDs	CED	13	Milk	25
	BW	-2.7	\$W	37.71
	WW	35	\$EN	1.15
	YW	65		

Great calving ease prospect here for you to consider. This bull combines many cows that are productive into their teens.



**LOT 41** **Sinclair Easy Time 8TG8**  
 BULL 19363992 DOB: 02/25/18 TATTOO: 8TG8

Sinclair Timeless 8BA4  
**Sinclair Sun Dial 5TL43**  
 Sinclair Primrose 1G13 6E11

Sinclair X-Changer 2FE9  
**LJ K Bty 5FV0 5P65**  
 Sinclair K Bty 5P65 2S24

Sinclair IN Time 6BT39  
 Sinclair Blackbird 2P8 7079  
 Sinclair Grass Master  
 Sinclair Primrose 6E11 Z194  
 Sinclair Emulation 5522 XP  
 Sinclair Blackie 7V3 2P18  
 N Bar Prime Time D806  
 N Bar Kinochtry Bty SCC 2S24

Individual	Actual Birth Wt	63
	Adj. Weaning Wt	577
	Adj. Yearling Wt	1092
Inbreeding Coefficient: 8.63%		
EPDs	CED	9
	Milk	25
	BW	-2.7
	\$W	37.12
	WW	33
	\$EN	3.72
	YW	59

Calving ease bull, moderate framed with rapid early growth and sensible mature size.



**LOT 42** **Sinclair Right Time 8BT1**  
 BULL 19097926 DOB: 02/10/18 TATTOO: 8BT1

Leachman Right Time  
**BT Right Time 24J**  
 Sitz Everelda Entense 1905

Sinclair Emulation XXP  
**Sinclair Eriskay 2XX7 7V74**  
 Sinclair Eriskay 7V74 707

N Bar Emulation EXT  
 Leachman Erica 0025  
 Traveler 124 G D A R  
 Sitz Everelda Entense 179  
 N Bar Emulation EXT  
 N Bar Primrose Y3051  
 N Bar Emulation Ext A1747  
 J W 707 Eriskay 31 2814

Individual	Actual Birth Wt	68
	Adj. Weaning Wt	531
	Adj. Yearling Wt	958
Inbreeding Coefficient: 7.81%		
EPDs	CED	10
	Milk	22
	BW	-1.8
	\$W	38.84
	WW	37
	\$EN	7.25
	YW	60

Well balanced bull from a very good cow. Use this bull to make easy keeping progeny. All bulls selling will have passed a Breeding Soundness Exam.

**LOT 44** **Sinclair Bob 8BX4**  
 BULL 19301526 DOB: 03/10/18 TATTOO: 8BX4

Sinclair Emulation XXP  
**Sinclair X-Plus 4XX54**  
 Sinclair Lady Ida 8XV12 C52

Cole Creek Cedar Ridge 1V  
**Sinclair Enchantress 5CR4**  
 Sinclair Enchantress 3X9

N Bar Emulation EXT  
 N Bar Primrose Y3051  
 N Bar Emulation Ext V722  
 N Bar Lady Ida Z1453  
 Cole Creek Black Cedar 46P  
 Cole Creek Clovanada 49S  
 N Bar Emulation EXT  
 Sinclair Enchantress 6S20

Individual	Actual Birth Wt	72
	Adj. Weaning Wt	640
	Adj. Yearling Wt	1149
Inbreeding Coefficient: 9.38%		
EPDs	CED	7
	Milk	23
	BW	.0
	\$W	42.03
	WW	45
	\$EN	-1.82
	YW	78

Calving ease bull sired by Bob who did well with his progeny in our feed efficiency test. Look for efficient conversion and productive offspring from lot 44.

**LOT 43** **Sinclair Right Time 8BT14**  
 BULL 19169685 DOB: 02/27/18 TATTOO: 8BT14

Leachman Right Time  
**BT Right Time 24J**  
 Sitz Everelda Entense 1905

Sinclair Emulation XXP  
**Sinclair Blkbird 4XX11 0A15**  
 Sinclair Blkbird 0A15 8R41

N Bar Emulation EXT  
 Leachman Erica 0025  
 Traveler 124 G D A R  
 Sitz Everelda Entense 1791  
 N Bar Emulation EXT  
 N Bar Primrose Y3051  
 Emulation 31  
 Sinclair Blkbird 8R41 5P101

Individual	Actual Birth Wt	80
	Adj. Weaning Wt	563
	Adj. Yearling Wt	1129
Inbreeding Coefficient: 6.59%		
EPDs	CED	4
	Milk	20
	BW	1.1
	\$W	35.26
	WW	42
	\$EN	4.79
	YW	72

Use this bull on your cows to make steers that will sell well and easy keeping daughters.

**LOT 45** **Sinclair Bob 8BX10**  
 BULL 19279790 DOB: 02/26/18 TATTOO: 8BX10

Sinclair Emulation XXP  
**Sinclair X-Plus 4XX54**  
 Sinclair Lady Ida 8XV12 C52

Papa Rito T Intense DHD 6844  
**Sinclair Enchantress 1C7**  
 Sinclair Enchantress 7RL3

N Bar Emulation EXT  
 N Bar Primrose Y3051  
 N Bar Emulation Ext V722  
 N Bar Lady Ida Z1453  
 Papa Rito Traveler 4807  
 Blackcap Mc Henry D H D 4810  
 Sinclair Rito Legacy 3R9  
 Sinclair Enchantress 5P79

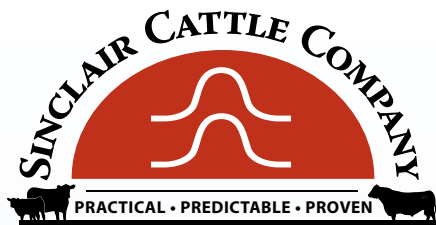
Individual	Actual Birth Wt	
	Adj. Weaning Wt	611
	Adj. Yearling Wt	1193
Inbreeding Coefficient: 1.90%		
EPDs	CED	3
	Milk	26
	BW	1.5
	\$W	41.69
	WW	42
	\$EN	-1.95
	YW	69

Efficient growth from a productive cow.



Sinclair Bob 7BX4





## LOT 46 *Out of Sale*

## LOT 47 *Sinclair Express 8V28*

BULL 19380702 DOB: 2/13/18 TATTOO: 8V28

N Bar Emulation EXT  
N Bar Emulation Ext A1747  
N Bar Clova Pride U3031  
  
N Bar Prime Time D806  
Sinclair Lady Ida 9P12 7X25  
Sinclair Lady Ida 7X25 B154

Emulation N Bar 5522  
N Bar Primrose 2424  
N Bar Trademark 1949  
N Bar Clova Pride 7356  
Gardens Prime Time  
N Bar Miss Emulous A404  
N Bar Emulation EXT  
N Bar Lady Ida X2912

Individual	Actual Birth Wt	77		
	Adj. Weaning Wt	493		
	Adj. Yearling Wt	904		
Inbreeding Coefficient: 15.82%				
EPDs	CED	6	Milk	21
	BW	.3	\$W	32.72
	WW	37	\$EN	6.52
	YW	65		

Look at this Good bull from a 10 year- old cow.

## LOT 48 *Sinclair Express 8V29*

BULL 19380703 DOB: 02/16/18 TATTOO: 8V29

N Bar Emulation EXT  
N Bar Emulation Ext A1747  
N Bar Clova Pride U3031  
  
N Bar Prime Time D806  
Sinclair Primrose 9P23 Z194  
N Bar Primrose U2110

Emulation N Bar 5522  
N Bar Primrose 2424  
N Bar Trademark 1949  
N Bar Clova Pride 7356  
Gardens Prime Time  
N Bar Miss Emulous A404  
N Bar Moderation 9957  
N Bar Primrose 1986

Individual	Actual Birth Wt	89		
	Adj. Weaning Wt	428		
	Adj. Yearling Wt	919		
Inbreeding Coefficient: 6.88%				
EPDs	CED	4	Milk	20
	BW	1.0	\$W	29.31
	WW	37	\$EN	6.53
	YW	68		

Nice A1747 son here from a good 10 year- old daughter of D806 from a top-notch cow family.

## LOT 49 *Sinclair Express 8V30*

BULL 19380704 DOB: 02/16/18 TATTOO: 8V30

N Bar Emulation EXT  
N Bar Emulation Ext A1747  
N Bar Clova Pride U3031  
  
Sinclair IN Time 6BT39  
Sinclair C Pride 8BA10 3P37  
Sinclair C Pride 3P37 J204

Emulation N Bar 5522  
N Bar Primrose 2424  
N Bar Trademark 1949  
N Bar Clova Pride 7356  
BT Right Time 24J  
N Bar Miss Emulous A404  
N Bar Prime Time D806  
N Bar Clova Pride WP C2009

Individual	Actual Birth Wt	81		
	Adj. Weaning Wt	536		
	Adj. Yearling Wt	948		
Inbreeding Coefficient: 9.08%				
EPDs	CED	7	Milk	23
	BW	-.6	\$W	37.37
	WW	37	\$EN	5.14
	YW	62		

Calving ease option here from a nice cow with a lot of volume.

## LOT 50 *Sinclair Express 8V27*

BULL 19380700 DOB: 2/13/18 TATTOO: 8V27

N Bar Emulation EXT  
N Bar Emulation Ext A1747  
N Bar Clova Pride U3031

Emulation N Bar 5522  
N Bar Primrose 2424  
N Bar Trademark 1949  
N Bar Clova Pride 7356  
BT Right Time 24J  
N Bar Miss Emulous A404  
N Bar Prime Time D806  
N Bar Primrose 4324B

Individual	Actual Birth Wt	78		
	Adj. Weaning Wt	493		
	Adj. Yearling Wt	919		
Inbreeding Coefficient: 10.55%				
EPDs	CED	6	Milk	24
	BW	.1	\$W	42.78
	WW	43	\$EN	-.10
	YW	71		

Herd Builder.

## LOT 51 *Sinclair Emulation 8FT16*

BULL 19169630 DOB: 02/05/18 TATTOO: 8FT16

Sinclair Emulation OF4  
Sinclair Emulation 4FX1  
Sinclair M Emulous 4ET1 D47

Emulation N Bar 5522  
N Bar Kinochtry Bty SCC 2V3  
N Bar Explosion TNT  
N Bar Miss Emulous B514  
Sinclair Entrepreneur 8R101  
Sinclair Lady Ida 8XV12 C52  
Sinclair Net Present Value  
Sinclair Blkcap Mc 1LB2 7RR4

Individual	Actual Birth Wt	74		
	Adj. Weaning Wt	666		
	Adj. Yearling Wt	1197		
Inbreeding Coefficient: 3.13%				
EPDs	CED	9	Milk	25
	BW	-.7	\$W	44.29
	WW	44	\$EN	-3.65
	YW	76		

Sure fire calving ease bull with Range Savvy genetics to help your operation.

## LOT 52 *Sinclair Emulation 8FT17*

BULL 19168731 DOB: 02/05/18 TATTOO: 8FT17

Sinclair Emulation OF4  
Sinclair Emulation 4FX1  
Sinclair M Emulous 4ET1 D47

Emulation N Bar 5522  
N Bar Kinochtry Bty SCC 2V3  
N Bar Explosion TNT  
N Bar Miss Emulous B514  
Sinclair Rito Promise 0R12  
Sinclair Eriskay 5E3 2N11  
Sinclair Multi-X  
Sinclair K Bty 3J3 H426

Individual	Actual Birth Wt	68		
	Adj. Weaning Wt	594		
	Adj. Yearling Wt	1064		
Inbreeding Coefficient: 7.82%				
EPDs	CED	9	Milk	24
	BW	-1.4	\$W	37.01
	WW	36	\$EN	2.94
	YW	64		

Arrive Alive Calving ease bull.

## LOT 53 *Sinclair Emulation 8FT20*

BULL 19168734 DOB: 02/07/18 TATTOO: 8FT20

Sinclair Emulation OF4  
Sinclair Emulation 4FX1  
Sinclair M Emulous 4ET1 D47

Emulation N Bar 5522  
N Bar Kinochtry Bty SCC 2V3  
N Bar Explosion TNT  
N Bar Miss Emulous B514  
Emulation N Bar 5522  
N Bar Primrose 2424  
O C C Great Plains 943G  
N Bar Blackbird C349

Individual	Actual Birth Wt	64		
	Adj. Weaning Wt	565		
	Adj. Yearling Wt	1007		
Inbreeding Coefficient: 14.55%				
EPDs	CED	11	Milk	22
	BW	-1.5	\$W	36.07
	WW	36	\$EN	6.48
	YW	62		

Arrive Alive Calving ease bull.



**LOT 54** **Sinclair Emulation 8FT19**  
 BULL 19168733 DOB: 02/06/18 TATTOO: 8FT19

Sinclair Emulation OF4  
**Sinclair Emulation 4FX1**  
 Sinclair M Emulous 4ET1 D47

Sinclair Executive 9XV2  
**Sinclair Eriskay 6U82 1RW16**  
 Sinclair Eriskay 1RW16 8XT3

Emulation N Bar 5522  
 N Bar Kinochtry Bty SCC 2V3  
 N Bar Explosion TNT  
 N Bar Miss Emulous B514  
 N Bar Emulation Ext V722  
 N Bar Primrose Y3051  
 Sinclair Wajima 6R110  
 Sinclair Eriskay 8XT3 6R40

Individual	Actual Birth Wt	65
	Adj. Weaning Wt	590
	Adj. Yearling Wt	987
	<b>Inbreeding Coefficient: 9.64%</b>	
EPDs	CED	12
	Milk	19
	BW	-2.3
	\$W	34.83
	WW	37
	\$EN	9.57
	YW	64

Arrive Alive Calving ease bull. All bulls selling will have passed a breeding Soundness Exam.



Sinclair M Emulous 4ET1

**LOT 56** **Sinclair Emulation 8FT23**  
 BULL 19168737 DOB: 02/06/18 TATTOO: 8FT23

Sinclair Emulation OF4  
**Sinclair Emulation 4FX1**  
 Sinclair M Emulous 4ET1 D47

Sinclair Executive 9XV2  
**Sinclair Enchantress 6U65**  
 Sinclair Enchantress 0R03

Emulation N Bar 5522  
 N Bar Kinochtry Bty SCC 2V3  
 N Bar Explosion TNT  
 N Bar Miss Emulous B514  
 N Bar Emulation Ext V722  
 N Bar Primrose Y3051  
 Sinclair Pioneer 7RF4  
 Sinclair Enchantress 6PV29

Individual	Actual Birth Wt	
	Adj. Weaning Wt	602
	Adj. Yearling Wt	1072
	<b>Inbreeding Coefficient: 8.52%</b>	
EPDs	CED	11
	Milk	23
	BW	-1.9
	\$W	39.61
	WW	37
	\$EN	5.57
	YW	61

Arrive Alive Calving ease bull.

**LOT 57** **Sinclair Emulation 8FT6**  
 BULL 19168721 DOB: 01/31/18 TATTOO: 8FT6

Sinclair Emulation OF4  
**Sinclair Emulation 4FX1**  
 Sinclair M Emulous 4ET1 D47

Sinclair Executive 9XV2  
**Sinclair Lady 6U20 3RM21**  
 Sinclair Lady 3RM21 1A4

Emulation N Bar 5522  
 N Bar Kinochtry Bty SCC 2V3  
 N Bar Explosion TNT  
 N Bar Miss Emulous B514  
 N Bar Emulation Ext V722  
 N Bar Primrose Y3051  
 Sinclair Pioneer 1RF1  
 Sinclair Lady 1A4 9JP22

Individual	Actual Birth Wt	60
	Adj. Weaning Wt	622
	Adj. Yearling Wt	980
	<b>Inbreeding Coefficient: 10.18%</b>	
EPDs	CED	13
	Milk	22
	BW	-3.0
	\$W	38.62
	WW	36
	\$EN	7.34
	YW	60

Arrive Alive Calving ease bull.

**LOT 55** **Sinclair Emulation 8FT18**  
 BULL 19168732 DOB: 02/06/18 TATTOO: 8FT18

Sinclair Emulation OF4  
**Sinclair Emulation 4FX1**  
 Sinclair M Emulous 4ET1 D47

Sitz Traveler 043  
**Sinclair Pride 6T55 2188**  
 Sitz Pride 2188

Emulation N Bar 5522  
 N Bar Kinochtry Bty SCC 2V3  
 N Bar Explosion TNT  
 N Bar Miss Emulous B514  
 Traveler 124 G D A R  
 Sitz Everelda Entense 1137  
 N Bar Emulation EXT  
 Sitz Pride 838

Individual	Actual Birth Wt	74
	Adj. Weaning Wt	575
	Adj. Yearling Wt	1106
	<b>Inbreeding Coefficient: 4.79%</b>	
EPDs	CED	8
	Milk	24
	BW	-1
	\$W	33.97
	WW	35
	\$EN	3.37
	YW	63

Arrive Alive Calving ease bull.

**LOT 58** **Sinclair Emulation 8FT9**  
 BULL 19168724 DOB: 02/02/18 TATTOO: 8FT9

Sinclair Emulation OF4  
**Sinclair Emulation 4FX1**  
 Sinclair M Emulous 4ET1 D47

Sinclair Broker 3RC33  
**Sinclair Lady Ida 6K27 3007**  
 Sinclair Lady Ida 3007 0XM13

Emulation N Bar 5522  
 N Bar Kinochtry Bty SCC 2V3  
 N Bar Explosion TNT  
 N Bar Miss Emulous B514  
 Sinclair Entrepreneur 8R101  
 Sinclair Lady Ida 8XV12 C52  
 Basin Rainmaker 914A  
 Sinclair Lady Ida 0XM13

Individual	Actual Birth Wt	64
	Adj. Weaning Wt	628
	Adj. Yearling Wt	1047
	<b>Inbreeding Coefficient: 4.74%</b>	
EPDs	CED	11
	Milk	25
	BW	-2.3
	\$W	43.32
	WW	40
	\$EN	-0.58
	YW	69

Arrive Alive Calving ease bull.



Sinclair Emulation OF4

**LOT 59** **Sinclair X-Plus 8XX15**  
 BULL Pending DOB: 02/16/18 TATTOO: 8XX15

N Bar Emulation EXT  
**Sinclair Emulation XXP**  
 N Bar Primrose Y3051

S A V Registry 2831  
**Gerstell Blkcap Mc 5R2**  
 Sinclair Blkcap Mc 9P9 7R8

Emulation N Bar 5522  
 N Bar Primrose 2424  
 N Bar Emulation EXT  
 N Bar Primrose 2429  
 Rito 707 of Ideal 3407 7075  
 S A V Madame Pride 0075  
 N Bar Prime Time D806  
 Sinclair Blkcap Mc 7R8 2N10

Individual	Actual Birth Wt	72
	Adj. Weaning Wt	511
	Adj. Yearling Wt	936
	<b>Inbreeding Coefficient:</b>	
EPDs	CED	
	Milk	
	BW	
	\$W	
	WW	
	\$EN	
	YW	

Good XXP son here that has the calm disposition XXP is known for. EPD's will be available on this lot at the sale, posted at [sinclaircattle.com](http://sinclaircattle.com) or we can email them to you upon request.



**LOT 60 Sinclair Charlo 8C1**

BULL Pending

DOB: 02/11/18

TATTOO: 8C1

O C C Paxton 730P  
**Coleman Charlo 0256**  
 Bohi Abigale 6014

Apex Windy 078  
**Gerstell Ms Emulous 6W1**  
 Sinclair Ms Emulous 3RH7

O C C Focus 813F  
 O C C Blackbird 736K  
 Sitz Traveler 8180  
 S A V Abigale 6062  
 H A R B Windy 702 JH  
 Apexette Lucy 6037  
 H A Image Maker 0415  
 Sinclair Ms Emulous 8F11

Individual	Actual Birth Wt	77
	Adj. Weaning Wt	596
	Adj. Yearling Wt	978
Inbreeding Coefficient:		
EPDs	CED	Milk
	BW	\$W
	WW	\$EN
	YW	

☞ We deliver! If you need a bull we can get him to you. If you have any questions let me know. EPD's will be available on this lot at the sale, posted at [sinclaircattle.com](http://sinclaircattle.com) or we can email them to you upon request.

**LOT 64 Sinclair Emulation 8EE12**

BULL 19168752

DOB: 02/09/18

TATTOO: 8EE12

Sinclair Emulation 5522 XP  
**Sinclair X-Changer 5FE15**  
 Sinclair M Emulous 4ET1 D47

Sinclair In Time 9RT12  
**Sinclair K Bty 6NR6 3TL51**  
 Sinclair K Bty 3TL51 1A15

Emulation N Bar 5522  
 N Bar Primrose Y3051  
 N Bar Explosion TNT  
 N Bar Miss Emulous B514  
 Leachman Right Time  
 N Bar Enchantress 4908  
 Sinclair Timeless 8BA4  
 Sinclair K Bty 1A15 9JP15

Individual	Actual Birth Wt	68
	Adj. Weaning Wt	580
	Adj. Yearling Wt	1028
Inbreeding Coefficient: 6.80%		
EPDs	CED	7
	BW	-1.1
	WW	27
	YW	49

☞ Arrive Alive Calving ease bull.

**LOT 61 Sinclair Emulation 8EE2**

BULL 19301525

DOB: 01/31/18

TATTOO: 8EE2

Sinclair Emulation 5522 XP  
**Sinclair X-Changer 5FE15**  
 Sinclair M Emulous 4ET1 D47

Sinclair Emperor 0XT51  
**Sinclair Blkcap 6X07 2F4**  
 Sinclair Blkcap 2F4 0953

Emulation N Bar 5522  
 N Bar Primrose Y3051  
 N Bar Explosion TNT  
 N Bar Miss Emulous B514  
 Sinclair Extra 4X13  
 Sinclair Blkbird 70C10 J472  
 Emulation N Bar 5522  
 Papa Blackcap 0953

Individual	Actual Birth Wt	57
	Adj. Weaning Wt	621
	Adj. Yearling Wt	1047
Inbreeding Coefficient: 11.62%		
EPDs	CED	14
	BW	-3.4
	WW	31
	YW	50

☞ Arrive Alive Calving ease bull.

**LOT 65 Sinclair Emulation 8FF8**

BULL 19279891

DOB: 03/11/18

TATTOO: 8FF8

Sinclair X-Changer 2FE9  
**Sinclair Piney Creek 5FV5**  
 Sinclair Ms Emulous 8F12

Sinclair Emulation 5522 XP  
**Sinclair Enchantress 5FE1**  
 Sinclair Enchantress 1JP11

Sinclair Emulation 5522 XP  
 Sinclair Blackie 7V3 2P18  
 Emulation N Bar 5522  
 N Bar Miss Emulous A404  
 Emulation N Bar 5522  
 N Bar Primrose Y3051  
 Dunlouse Jipse Earl E161  
 Sinclair Enchantress 8V10

Individual	Actual Birth Wt	62
	Adj. Weaning Wt	559
	Adj. Yearling Wt	1135
Inbreeding Coefficient: 16.33%		
EPDs	CED	13
	BW	-3.4
	WW	33
	YW	47

☞ Arrive Alive Calving ease bull. Lots of folks I talk to say their 5522 daughters were some of the best they ever had. Look at this bull and see how 5522 is lined up, as a bonus the efficiency and fertility cow D80 is also in here.

**LOT 62 Sinclair Emulation 8EE6**

BULL 19275413

DOB: 02/22/18

TATTOO: 8EE6

Sinclair Emulation 5522 XP  
**Sinclair X-Changer 5FE15**  
 Sinclair M Emulous 4ET1 D47

Sinclair Timeless 8BA4  
**Sinclair Lady Ida 6TL11 4AR3**  
 Sinclair Lady Ida 4AR3 2D29

Emulation N Bar 5522  
 N Bar Primrose Y3051  
 N Bar Explosion TNT  
 N Bar Miss Emulous B514  
 Sinclair In Time 6BT39  
 Sinclair Blackbird 2P8 7079  
 Sinclair Emulation 0A2  
 Sinclair Lady Ida 2D29 5PV38

Individual	Actual Birth Wt	68
	Adj. Weaning Wt	601
	Adj. Yearling Wt	931
Inbreeding Coefficient: 6.16%		
EPDs	CED	11
	BW	-2.3
	WW	31
	YW	54

☞ Arrive Alive Calving ease bull.



Sinclair M Emulous 4ET1

**LOT 63 Sinclair Emulation 8EE7**

BULL 19275385

DOB: 02/22/18

TATTOO: 8EE7

Sinclair Emulation 5522 XP  
**Sinclair X-Changer 5FE15**  
 Sinclair M Emulous 4ET1 D47

Sinclair Broker 3RC33  
**Sinclair Ms Emulous 6K1 2P7**  
 Sinclair Ms Emulous 2P7 D47

Emulation N Bar 5522  
 N Bar Primrose Y3051  
 N Bar Explosion TNT  
 N Bar Miss Emulous B514  
 Sinclair Entrepreneur 8R101  
 Sinclair Lady Ida 8XV12 C52  
 N Bar Prime Time D806  
 N Bar Miss Emulous B514

Individual	Actual Birth Wt	66
	Adj. Weaning Wt	584
	Adj. Yearling Wt	1138
Inbreeding Coefficient: 9.74%		
EPDs	CED	12
	BW	-3.2
	WW	29
	YW	50

☞ Arrive Alive Calving ease bull. The sire of this bull combines two productive and easy keeping animals in 4ET1 and 5522 XP. These bulls are more than just calving ease bulls they offer live calves and years of productivity.

Don't gamble; take all your savings and buy some good stock and hold it till it goes up, then sell it. If it don't go up, don't buy it. Will Rogers



**LOT 66** **Sinclair Emulation 8FF6**  
 BULL 19289360 DOB: 03/08/18 TATTOO: 8FF6

Sinclair X-Changer 2FE9  
**Sinclair Piney Creek 5FV5**  
 Sinclair Ms Emulous 8F12

Sinclair Extra 4X13  
**Sinclair Lady Ida 9XT81**  
 Sinclair Lady Ida 7FC23 J199

Sinclair Emulation 5522 XP  
 Sinclair Blackie 7V3 2P18  
 Emulation N Bar 5522  
 N Bar Miss Emulous A404  
 N Bar Emulation EXT  
 N Bar Lady Ida S C C 2P37  
 N Bar Emulation 5522 4245A  
 N Bar Lady Ida F1499

Individual	Actual Birth Wt	60
	Adj. Weaning Wt	590
	Adj. Yearling Wt	904
Inbreeding Coefficient: 13.26%		
EPDs	CED	16
	BW	-5.1
	Milk	19
	SW	28.49
	WW	26
	SEN	20.09
	YW	39

Arrive Alive Calving ease bull. Don't forget we will have a meal and a presentation by Del Ficke, Friday March 22nd. Come for the sale and free food!



Sinclair Emulation 5522XP

**LOT 69** **Sinclair Emulation 8FF9**  
 BULL 19279847 DOB: 03/12/18 TATTOO: 8FF9

Sinclair X-Changer 2FE9  
**Sinclair Piney Creek 5FV5**  
 Sinclair Ms Emulous 8F12

Sinclair Rito Legacy 3R9  
**Sinclair B Maid 2RL6 507E**  
 C U Bemindful Maid 507E

Sinclair Emulation 5522 XP  
 Sinclair Blackie 7V3 2P18  
 Emulation N Bar 5522  
 N Bar Miss Emulous A404  
 R R Rito 707  
 Ideal 4465 of 6807 4286  
 Q A S Traveler 23-4  
 Bemindful Maid D H D 0807

Individual	Actual Birth Wt	84
	Adj. Weaning Wt	584
	Adj. Yearling Wt	1062
Inbreeding Coefficient: 0.65%		
EPDs	CED	9
	BW	-6
	Milk	17
	SW	24.01
	WW	29
	SEN	18.52
	YW	49

Arrive Alive Calving ease bull. This bull comes from an ideal sized and made 7 year-old cow.

**LOT 70** **Sinclair Emulation 8XA10**  
 BULL 19279821 DOB: 03/14/18 TATTOO: 8XA10

N Bar Emulation EXT  
**Sinclair Exquisite 6X2**  
 Sinclair Ms Emulous 7RT5

N Bar Prime Time D806  
**Sinclair Ms Emulous 2P6 D47**  
 N Bar Miss Emulous B514

Emulation N Bar 5522  
 N Bar Primrose 2424  
 Leachman Right Time  
 N Bar Miss Emulous X3091  
 Gardens Prime Time  
 N Bar Miss Emulous A404  
 N Bar Emulation Extra V129  
 N Bar Miss Emulous Y3502A

Individual	Actual Birth Wt	80
	Adj. Weaning Wt	523
	Adj. Yearling Wt	1166
Inbreeding Coefficient: 12.06%		
EPDs	CED	8
	BW	-9
	Milk	23
	SW	26.73
	WW	25
	SEN	13.15
	YW	43

Arrive Alive Calving ease bull. Two N Bar donors wrapped up close in this bull, offers you a great chance at productivity and predictability made right for today.

**LOT 67** **Sinclair Emulation 8FF16**  
 BULL 19281288 DOB: 04/01/18 TATTOO: 8FF16

Sinclair X-Changer 2FE9  
**Sinclair Piney Creek 5FV5**  
 Sinclair Ms Emulous 8F12

O C C Great Plains 943G  
**Sinclair K Bty 50C8 3TL51**  
 Sinclair K Bty 3TL51 1A15

Sinclair Emulation 5522 XP  
 Sinclair Blackie 7V3 2P18  
 Emulation N Bar 5522  
 N Bar Miss Emulous A404  
 N Bar Emulation EXT  
 Dixie Erica of C H 1019  
 Sinclair Timeless 8BA4  
 Sinclair K Bty 1A15 9JP15

Individual	Actual Birth Wt	76
	Adj. Weaning Wt	620
	Adj. Yearling Wt	1076
Inbreeding Coefficient: 11.52%		
EPDs	CED	12
	BW	-2.3
	Milk	22
	SW	36.57
	WW	34
	SEN	9.04
	YW	56

Arrive Alive Calving ease bull.

**LOT 71** **Sinclair Grass Range 8XG5**  
 BULL 19168735 DOB: 02/14/18 TATTOO: 8XG5

N Bar Emulation EXT  
**Sinclair Exquisite 6X4**  
 Sinclair M Emulous 4ET1 D47

Sitz Traveler 043  
**Sinclair Pride 6T51 2188**  
 Sitz Pride 2188

Emulation N Bar 5522  
 N Bar Primrose 2424  
 N Bar Explosion TNT  
 N Bar Miss Emulous B514  
 Traveler 124 G D A R  
 Sitz Everelda Entense 1137  
 N Bar Emulation EXT  
 Sitz Pride 838

Individual	Actual Birth Wt	66
	Adj. Weaning Wt	602
	Adj. Yearling Wt	1103
Inbreeding Coefficient: 8.30%		
EPDs	CED	6
	BW	.4
	Milk	24
	SW	34.50
	WW	35
	SEN	4.65
	YW	60

Arrive Alive Calving ease bull. The mother of this bull carries more frame than most of our cows. Every bull, every cow, therefore every mating choice has a reason. If you would like to visit about some of those reasons and how they can help your operation give me a call 307-254-1477.

**LOT 68** **Sinclair Emulation 8FF11**  
 BULL 19289348 DOB: 03/15/18 TATTOO: 8FF11

Sinclair X-Changer 2FE9  
**Sinclair Piney Creek 5FV5**  
 Sinclair Ms Emulous 8F12

Sinclair Timeless 8BA4  
**Sinclair Lady 5TL51 1TX5**  
 Sinclair Lady 1TX5 80C2

Sinclair Emulation 5522 XP  
 Sinclair Blackie 7V3 2P18  
 Emulation N Bar 5522  
 N Bar Miss Emulous A404  
 Sinclair IN Time 6BT39  
 Sinclair Blackbird 2P8 7079  
 Sinclair XX 8X28  
 Sinclair Lady 80C2 5P22

Individual	Actual Birth Wt	76
	Adj. Weaning Wt	584
	Adj. Yearling Wt	1070
Inbreeding Coefficient: 13.32%		
EPDs	CED	12
	BW	-2.6
	Milk	21
	SW	32.48
	WW	31
	SEN	11.64
	YW	53

Arrive Alive Calving ease bull.





**LOT 72** **Sinclair Dynasty 8WC1**  
BULL 19281342 DOB: 02/25/18 TATTOO: 8WC1

Wandering CRK Dynasty JRM 2F  
**Sinclair Dynasty 3WCD7**  
Sinclair Eriskay 2N1 7883

Dunlouse Jipse Earl E161  
**Sinclair Enchantress 1JP11**  
Sinclair Enchantress 8V10

Eston Encounter M G 55 71  
Rose G V 37U  
D H D Traveler 6807  
Papa Eriskay 7883  
Betro of Classlochle  
Dunlouse Jipse Clova C095  
N Bar Emulation Ext A1747  
N Bar Enchantress Z1647

Individual	Actual Birth Wt	82
	Adj. Weaning Wt	599
	Adj. Yearling Wt	1108
Inbreeding Coefficient: 0.00%		
EPDs	CED	6
	Milk	24
	BW	.5
	\$W	39.74
	WW	36
	\$EN	8.47
	YW	51

🐄 Herd builder. Nice bull here from an 8 year- old cow.



Sinclair Eriskay 2N1 7883

**LOT 73** **Sinclair Dynasty 8WC15**  
BULL 19279798 DOB: 03/15/18 TATTOO: 8WC15

Wandering CRK Dynasty JRM 2F  
**Sinclair Dynasty 3WCD7**  
Sinclair Eriskay 2N1 7883

Sinclair Vision X 857  
**Sinclair Lady 1SX3 9X25**  
Sinclair Lady 9X25 2P60

Eston Encounter M G 55 71  
Rose G V 37U  
D H D Traveler 6807  
Papa Eriskay 7883  
N Bar Shadow X4124  
N Bar Miss Emulous A404  
N Bar Emulation EXT  
Sinclair Lady 2P60 4465

Individual	Actual Birth Wt	85
	Adj. Weaning Wt	639
	Adj. Yearling Wt	1103
Inbreeding Coefficient: 0.78%		
EPDs	CED	8
	Milk	20
	BW	-.4
	\$W	32.29
	WW	34
	\$EN	12.11
	YW	55

🐄 Herd builder. Lot 73 comes from a big ribbed 8 year- old cow with a tidy udder.

**LOT 74** **Sinclair Dynasty 8WC2**  
BULL 19169643 DOB: 03/04/18 TATTOO: 8WC2

Wandering CRK Dynasty JRM 2F  
**Sinclair Dynasty 3WCD7**  
Sinclair Eriskay 2N1 7883

Sinclair Emulation XXP  
**Sinclair Primrose 3XX48 0A14**  
Sinclair Primrose 0A14 8R5

Eston Encounter M G 55 71  
Rose G V 37U  
D H D Traveler 6807  
Papa Eriskay 7883  
N Bar Emulation EXT  
N Bar Primrose Y3051  
Emulation 31  
Sinclair Primrose 8R5 4P87

Individual	Actual Birth Wt	88
	Adj. Weaning Wt	578
	Adj. Yearling Wt	1124
Inbreeding Coefficient: 0.10%		
EPDs	CED	6
	Milk	15
	BW	.0
	\$W	27.91
	WW	38
	\$EN	13.82
	YW	66

🐄 Herd Builder. The 3WCD7 sons did very well in the feed efficiency test last year.

**LOT 75** **Sinclair Dynasty 8WC20**  
BULL 19283995 DOB: 03/17/18 TATTOO: 8WC20

Wandering CRK Dynasty JRM 2F  
**Sinclair Dynasty 3WCD7**  
Sinclair Eriskay 2N1 7883

Sinclair United X 8X21  
**Sinclair K Bty 1UX20 8R46**  
Sinclair K Bty 8R46 39P3

Eston Encounter M G 55 71  
Rose G V 37U  
D H D Traveler 6807  
Papa Eriskay 7883  
N Bar Emulation EXT  
N Bar Primrose Y3051  
Rito Revolve OR5  
Sinclair K Bty 39P3 L309

Individual	Actual Birth Wt	84
	Adj. Weaning Wt	615
	Adj. Yearling Wt	1085
Inbreeding Coefficient: 0.20%		
EPDs	CED	7
	Milk	17
	BW	.1
	\$W	34.08
	WW	42
	\$EN	9.11
	YW	71

🐄 Herd Builder.

**LOT 76** **Sinclair Dynasty 8WC7**  
BULL 19279846 DOB: 03/10/18 TATTOO: 8WC7

Wandering CRK Dynasty JRM 2F  
**Sinclair Dynasty 3WCD7**  
Sinclair Eriskay 2N1 7883

Sinclair Rito Legacy 3R9  
**Sinclair Ms Emulous 2RL5 D80**  
N Bar Miss Emulous A404

Eston Encounter M G 55 71  
Rose G V 37U  
D H D Traveler 6807  
Papa Eriskay 7883  
R R Rito 707  
Ideal 4465 of 6807 4286  
N Bar Emulation Ext Z52  
N Bar Miss Emulous X3091

Individual	Actual Birth Wt	84
	Adj. Weaning Wt	590
	Adj. Yearling Wt	1038
Inbreeding Coefficient: 1.95%		
EPDs	CED	9
	Milk	18
	BW	-.3
	\$W	20.76
	WW	25
	\$EN	19.73
	YW	43

🐄 Herd Builder. Calving ease bull from a very nice cow.

**LOT 77** **Sinclair Registry 8RY1**  
BULL Pending DOB: 03/15/18 TATTOO: 8RY1

Rito 707 of Ideal 3407 7075  
**S A V Registry 2831**  
S A V Madame Pride 0075

Sinclair Wajima 6R110  
**Gerstell Primrose 4RW2 9RL30**  
Sinclair Primrose 9RL30 H156

R R Rito 707  
Ideal 3407 of 1418 076  
S A F 598 Bando 5175  
S A V Madame Pride 8264  
R R Rito 707  
N Bar Queen Mother 9955F  
Sinclair Rito Legacy 3R9  
N Bar Primrose A638

Individual	Actual Birth Wt	73
	Adj. Weaning Wt	568
	Adj. Yearling Wt	1004
Inbreeding Coefficient:		
EPDs	CED	
	Milk	
	BW	
	\$W	
	WW	
	\$EN	
	YW	

🐄 EPD's will be available on this lot at the sale, posted at [sinclaircattle.com](http://sinclaircattle.com) or we can email them to you upon request.







**LOT 78** **Sinclair Rollin Coal 8K2**  
BULL 19168711 DOB: 01/26/18 TATTOO: 8K2

Sinclair Entrepreneur 8R101  
**Sinclair Broker 3RC33**  
Sinclair Lady Ida 8XV12 C52

Sinclair Executive 9XV2  
**Sinclair Lady 6U16 2A17**  
Sinclair Lady 2A17 3R1

R R Rito 707  
N Bar Kinochtry Beauty Z1925  
N Bar Emulation Ext V722  
N Bar Lady Ida Z1453  
N Bar Emulation Ext V722  
N Bar Primrose Y3051  
Emulation 31  
Sinclair Lady 3R1 4465

Individual	Actual Birth Wt	69
	Adj. Weaning Wt	644
	Adj. Yearling Wt	1159
<b>Inbreeding Coefficient: 9.62%</b>		
EPDs	CED	7 Milk 21
	BW	-2.1 \$W 38.62
	WW	38 \$EN 7.38
	YW	63

Arrive Alive calving ease bull that is ripped full of muscle.

**LOT 81** **Sinclair Rito 8RJ1**  
BULL 19166615 DOB: 01/13/18 TATTOO: 8RJ1

D H D Traveler 6807  
**Ideal 4458 of 6807 5103**  
Eldorado 5103 Ideal 3167 156

N Bar Emulation Ext A1747  
**Sinclair Lady Ida 0V1 2M1**  
N Bar Lady Ida S C C 2M1

Q A S Traveler 23-4  
Bemindful Maid D H D 0807  
Eldorado 156 of Ideal  
Super X 3167 Ideal 666 X01  
N Bar Emulation EXT  
N Bar Clova Pride U3031  
N Bar Moderation 9955  
N Bar Lady Ida C426

Individual	Actual Birth Wt	96
	Adj. Weaning Wt	595
	Adj. Yearling Wt	1206
<b>Inbreeding Coefficient: 0.47%</b>		
EPDs	CED	-3 Milk 17
	BW	3.7 \$W 20.87
	WW	42 \$EN 5.6
	YW	79

If you need or want a little more frame, look here. Lot 81 comes from a very good 9 year- old cow.

**LOT 79** **Sinclair Rollin Coal 8K14**  
BULL 19169649 DOB: 02/24/18 TATTOO: 8K14

Sinclair Entrepreneur 8R101  
**Sinclair Broker 3RC33**  
Sinclair Lady Ida 8XV12 C52

Sinclair Vision X 8S7  
**Sinclair Enchantress 1SX12**  
Sinclair Enchantress 9XV23

R R Rito 707  
N Bar Kinochtry Beauty Z1925  
N Bar Emulation Ext V722  
N Bar Lady Ida Z1453  
N Bar Shadow X4124  
N Bar Miss Emulous A404  
N Bar Emulation EXT  
N Bar Enchantress WP F3619

Individual	Actual Birth Wt	74
	Adj. Weaning Wt	606
	Adj. Yearling Wt	1227
<b>Inbreeding Coefficient: 8.42%</b>		
EPDs	CED	11 Milk 24
	BW	-2.4 \$W 40.75
	WW	34 \$EN 8.47
	YW	51

Arrive alive calving ease bull from an 8 year- old mother that does a good job every year.

**LOT 82** **Sinclair Rito 8RJ2**  
BULL 19166616 DOB: 01/15/18 TATTOO: 8RJ2

D H D Traveler 6807  
**Ideal 4458 of 6807 5103**  
Eldorado 5103 Ideal 3167 156

N Bar Emulation Ext A1747  
**Sinclair Primrose 1V2 145K**  
N Bar Primrose A14C910

Q A S Traveler 23-4  
Bemindful Maid D H D 0807  
Eldorado 156 of Ideal  
Super X 3167 Ideal 666 X01  
N Bar Emulation EXT  
N Bar Clova Pride U3031  
N Bar Prime Rate C1878  
N Bar Primrose Y3051

Individual	Actual Birth Wt	84
	Adj. Weaning Wt	596
	Adj. Yearling Wt	1175
<b>Inbreeding Coefficient: 0.00%</b>		
EPDs	CED	4 Milk 20
	BW	1.2 \$W 28.69
	WW	37 \$EN 6.23
	YW	69

Same deal here as lot 81, and lot 82's mother is a very good 8 year- old cow.

**LOT 80** **Sinclair Rollin Coal 8K8**  
BULL 19168717 DOB: 02/02/18 TATTOO: 8K8

Sinclair Entrepreneur 8R101  
**Sinclair Broker 3RC33**  
Sinclair Lady Ida 8XV12 C52

Sinclair X- Changer 2FE9  
**Sinclair Blkbird 6FV26 5E2**  
Sinclair Blackbird 5E2 2C9

R R Rito 707  
N Bar Kinochtry Beauty Z1925  
N Bar Emulation Ext V722  
N Bar Lady Ida Z1453  
Sinclair Emulation 5522 XP  
Sinclair Blackie 7V3 2P18  
N Bar Explosion  
Sinclair Blackbird 2C9 9864

Individual	Actual Birth Wt	73
	Adj. Weaning Wt	609
	Adj. Yearling Wt	1155
<b>Inbreeding Coefficient: 4.79%</b>		
EPDs	CED	4 Milk 21
	BW	.9 \$W 38.60
	WW	43 \$EN 3.91
	YW	71

Arrive Alive calving ease bull that will transmit calf vigor to his progeny. That sure helps profitability. The grand dam of lot 80- 5E2 is working for us at 13 years old, she stays in good shape raising a nice calf and she has a picture -perfect udder even at her age while averaging 111 for a wean ratio. Productive cow line here!

Live in such a way that you  
would not be ashamed to sell  
your parrot to the town gossip.  
Will Rogers



**LOT 83** **Sinclair Emulation 8XA4**  
 BULL 19281335 DOB: 03/11/18 TATTOO: 8XA4

N Bar Emulation EXT  
**Sinclair Exquisite 6X2**  
 Sinclair Ms Emulous 7RT5

Sinclair Extra 4X13  
**Sinclair Blkcap Mc 0XT28**  
 Sinclair Blkcap Mc 8XE26

Emulation N Bar 5522  
 N Bar Primrose 2424  
 Leachman Right Time  
 N Bar Miss Emulous X3091  
 N Bar Emulation EXT  
 N Bar Lady Ida S C C 2P37  
 Sinclair Excellency 5X25  
 Sinclair Blackcap M 2J90

Individual	Actual Birth Wt	76
	Adj. Weaning Wt	550
	Adj. Yearling Wt	984
Inbreeding Coefficient: 16.11%		
EPDs	CED	10
	BW	-1.5
	WW	35
	YW	58

☞ Arrive Alive Calving ease bull from a 9 year- old cow.

**LOT 85** **Sinclair Black Iron 8UR13**  
 BULL 19169663 DOB: 02/21/18 TATTOO: 8UR13

Sinclair Executive 9XV2  
**Sinclair Exactly 4U2**  
 Sinclair Lady 0R109 03S3

Sinclair Timeless 8BA4  
**Sinclair Q Mother 3TL32**  
 Sinclair Q Mother 1UX21 8SN4

N Bar Emulation Ext V722  
 N Bar Primrose Y3051  
 R R Rito 707  
 Sinclair Lady 03S3 4465  
 Sinclair IN Time 6BT39  
 Sinclair Blackbird 2P8 7079  
 Sinclair United X 8X21  
 Sinclair Q Mother 8SN4 6P83

Individual	Actual Birth Wt	82
	Adj. Weaning Wt	521
	Adj. Yearling Wt	1127
Inbreeding Coefficient: 9.45%		
EPDs	CED	8
	BW	-1.2
	WW	36
	YW	64

☞ Arrive Alive calving ease bull from a good Timeless daughter.



N Bar Miss Emulous X3091 "A40"

**LOT 86** **Sinclair Dynasty 8WC12**  
 BULL 19279850 DOB: 03/14/18 TATTOO: 8WC12

Wandering CRK Dynasty JRM 2F  
**Sinclair Dynasty 3WCD7**  
 Sinclair Eriskay 2N1 7883

Sinclair Timeless 8BA4  
**Sinclair Enchantress 2TL2**  
 Sinclair Enchantress 9XI1

Eston Encounter M G 55 71  
 Rose G V 37U  
 D H D Traveler 6807  
 Papa Eriskay 7883  
 Sinclair IN Time 6BT39  
 Sinclair Blackbird 2P8 7079  
 N Bar Emulation EXT  
 N Bar Enchantress S C C 2V6

Individual	Actual Birth Wt	80
	Adj. Weaning Wt	596
	Adj. Yearling Wt	1119
Inbreeding Coefficient: 0.10%		
EPDs	CED	10
	BW	-1.2
	WW	29
	YW	48

☞ Arrive Alive calving ease bull.

**LOT 84** **Sinclair Black Iron 8UR8**  
 BULL 19169658 DOB: 02/17/18 TATTOO: 8UR8

Sinclair Executive 9XV2  
**Sinclair Exactly 4U2**  
 Sinclair Lady 0R109 03S3

Sinclair Timeless 8BA4  
**Sinclair Ms Emulous 3TL3**  
 Sinclair Ms Emulous 8XV3

N Bar Emulation Ext V722  
 N Bar Primrose Y3051  
 R R Rito 707  
 Sinclair Lady 03S3 4465  
 Sinclair IN Time 6BT39  
 Sinclair Blackbird 2P8 7079  
 N Bar Emulation Ext V722  
 N Bar Miss Emulous A404

Individual	Actual Birth Wt	72
	Adj. Weaning Wt	619
	Adj. Yearling Wt	1157
Inbreeding Coefficient: 9.67%		
EPDs	CED	12
	BW	-2.7
	WW	38
	YW	66

☞ Arrive Alive calving ease bull with extra muscle from a good cow family, with moderate mature size, low birth weights and reproductive efficiency.

**LOT 87** **Sinclair Dynasty 8WC25**  
 BULL 19279829 DOB: 03/21/18 TATTOO: 8WC25

Wandering CRK Dynasty JRM 2F  
**Sinclair Dynasty 3WCD7**  
 Sinclair Eriskay 2N1 7883

Sinclair Executive 9XV2  
**Sinclair Lady 3H6 1RW17**  
 Sinclair Lady 1RW17 7RL32

Eston Encounter M G 55 71  
 Rose G V 37U  
 D H D Traveler 6807  
 Papa Eriskay 7883  
 N Bar Emulation Ext V722  
 N Bar Primrose Y3051  
 Sinclair Wajima 6R110  
 Sinclair Lady 7RL32 3S15

Individual	Actual Birth Wt	85
	Adj. Weaning Wt	668
	Adj. Yearling Wt	1102
Inbreeding Coefficient: 0.88%		
EPDs	CED	8
	BW	-5
	WW	40
	YW	66

☞ Low birth weight option from a wedge shaped cow, that has all the bases covered.



Sinclair Exactly 4U2

**We think that a good Angus cow is one of the fine things in life...**





**LOT 90** **Sinclair Executive 8U6**  
 BULL 19168761 DOB: 02/05/18 TATTOO: 8U6

N Bar Emulation Ext V722  
**Sinclair Executive 9XV2**  
 N Bar Primrose Y3051

Sinclair Sun Dial 4TL2  
**Sinclair Primrose 6TT9 4XX16**  
 Sinclair Primrose 4XX16 9P26

N Bar Emulation EXT  
 N Bar Blackbird 4307  
 N Bar Emulation EXT  
 N Bar Primrose 2429  
 Sinclair Timeless 8BA4  
 Sinclair K Bty 2X7 6MB8  
 Sinclair Emulation XXP  
 Sinclair Primrose 9P26 Z194

Individual	Actual Birth Wt	80
	Adj. Weaning Wt	587
	Adj. Yearling Wt	1147
<b>Inbreeding Coefficient: 8.64%</b>		
EPDs	CED	7
	BW	-4
	WW	33
	YW	68

⚡ A ¾ brother to lot 89. I am excited for you to use these close bred bulls and hear about your results.



**LOT 91** **Sinclair Executive 8U7**  
 BULL 19168762 DOB: 02/06/18 TATTOO: 8U7

N Bar Emulation Ext V722  
**Sinclair Executive 9XV2**  
 N Bar Primrose Y3051

Sinclair Timeless 8BA4  
**Sinclair Primrose 6TL12 4A10**  
 Sinclair Primrose 4A10 2XR4

N Bar Emulation EXT  
 N Bar Blackbird 4307  
 N Bar Emulation EXT  
 N Bar Primrose 2429  
 Sinclair IN Time 6BT39  
 Sinclair Blackbird 2P8 7079  
 Emulation 31  
 Sinclair Primrose 2XR4 0A14

Individual	Actual Birth Wt	68
	Adj. Weaning Wt	582
	Adj. Yearling Wt	1164
<b>Inbreeding Coefficient: 10.16%</b>		
EPDs	CED	11
	BW	-2.3
	WW	28
	YW	55

⚡ Arrive Alive calving ease bull.

**LOT 92** **Sinclair Executive 8U8**  
 BULL 19168763 DOB: 02/07/18 TATTOO: 8U8

N Bar Emulation Ext V722  
**Sinclair Executive 9XV2**  
 N Bar Primrose Y3051

O C C Emblazon 854E  
**Sinclair Enchantress 60E1**  
 N Bar Enchantress S C C 2F8

N Bar Emulation EXT  
 N Bar Blackbird 4307  
 N Bar Emulation EXT  
 N Bar Primrose 2429  
 D H D Traveler 6807  
 Dixie Erica of C H 1019  
 Emulation N Bar 5522  
 N Bar Enchantress X4126

Individual	Actual Birth Wt	77
	Adj. Weaning Wt	652
	Adj. Yearling Wt	1198
<b>Inbreeding Coefficient: 4.49%</b>		
EPDs	CED	7
	BW	.4
	WW	44
	YW	75

⚡ Calving ease bull from a nice young Emblazon daughter

**LOT 88** **Sinclair Executive 8U19**  
 BULL 19284018 DOB: 03/16/18 TATTOO: 8U19

N Bar Emulation Ext V722  
**Sinclair Executive 9XV2**  
 N Bar Primrose Y3051

Sinclair Timeless 8BA4  
**Sinclair Lady Ida 4TL15 2X3**  
 Sinclair Lady Ida 2X3 6PV1

N Bar Emulation EXT  
 N Bar Blackbird 4307  
 N Bar Emulation EXT  
 N Bar Primrose 2429  
 Sinclair IN Time 6BT39  
 Sinclair Blackbird 2P8 7079  
 N Bar Emulation EXT  
 Sinclair Lady Ida 6PV1 04F3

Individual	Actual Birth Wt	84
	Adj. Weaning Wt	600
	Adj. Yearling Wt	1154
<b>Inbreeding Coefficient: 12.94%</b>		
EPDs	CED	8
	BW	-1.2
	WW	34
	YW	66

⚡ Caving ease bull with base width and a good attitude.



Sinclair Lady Ida 5PV38 B154

**LOT 89** **Sinclair Executive 8U5**  
 BULL 19168760 DOB: 02/03/18 TATTOO: 8U5

N Bar Emulation Ext V722  
**Sinclair Executive 9XV2**  
 N Bar Primrose Y3051

Sinclair Sun Dial 4TL2  
**Sinclair Queen 6TT14 4XX17**  
 Sinclair Queen 4XX17 9V4

N Bar Emulation EXT  
 N Bar Blackbird 4307  
 N Bar Emulation EXT  
 N Bar Primrose 2429  
 Sinclair Timeless 8BA4  
 Sinclair K Bty 2X7 6MB8  
 Sinclair Emulation XXP  
 Sinclair Queen 9V4 12A3

Individual	Actual Birth Wt	72
	Adj. Weaning Wt	660
	Adj. Yearling Wt	1138
<b>Inbreeding Coefficient: 10.55%</b>		
EPDs	CED	10
	BW	-1.7
	WW	39
	YW	74

⚡ Arrive Alive calving ease bull that has the foundation for predictable results.



**LOT 93** **Sinclair Express 8V12**  
BULL 19169704 DOB: 02/14/18 TATTOO: 8V12

N Bar Emulation EXT  
**N Bar Emulation Ext A1747**  
N Bar Clova Pride U3031

N Bar Emulation EXT  
**Sinclair Lady 1X58 0353**  
Sinclair Lady 0353 4465

Emulation N Bar 5522  
N Bar Primrose 2424  
N Bar Trademark 1949  
N Bar Clova Pride 7356  
Emulation N Bar 5522  
N Bar Primrose 2424  
N Bar Shadow X4124  
Ideal 4465 of 6807 4286

Individual	Actual Birth Wt	78
Individual	Adj. Weaning Wt	591
Individual	Adj. Yearling Wt	1129
Inbreeding Coefficient: 17.58%		
EPDs	CED	4
EPDs	BW	-2
EPDs	WW	44
EPDs	YW	72
EPDs	Milk	20
EPDs	\$W	40.40
EPDs	\$EN	4.79

🐾 Herd Builder. Lower birth weight option from an easy keeping productive 8 year- old cow.

**LOT 96** **Sinclair Emulation 8EE10**  
BULL 19168742 DOB: 02/03/18 TATTOO: 8EE10

Sinclair Emulation 5522 XP  
**Sinclair X-Changer 5FE15**  
Sinclair M Emulous 4ET1 D47

Sinclair Vision 35X12  
**Sinclair Primrose 65X9 1G5**  
Sinclair Primrose 1G5 8P3

Emulation N Bar 5522  
N Bar Primrose Y3051  
N Bar Explosion TNT  
N Bar Miss Emulous B514  
Sinclair Vision X 857  
Sinclair K Bty 0F1 2V3  
Sinclair Grass Master  
Sinclair Primrose 8P3 E002

Individual	Actual Birth Wt	70
Individual	Adj. Weaning Wt	622
Individual	Adj. Yearling Wt	1056
Inbreeding Coefficient: 12.27%		
EPDs	CED	9
EPDs	BW	-6
EPDs	WW	34
EPDs	YW	60
EPDs	Milk	21
EPDs	\$W	31.48
EPDs	\$EN	8.66

🐾 Arrive Alive calving ease bull.

**LOT 94** **Sinclair Express 8V18**  
BULL 19169710 DOB: 02/19/18 TATTOO: 8V18

N Bar Emulation EXT  
**N Bar Emulation Ext A1747**  
N Bar Clova Pride U3031

N Bar Emulation EXT  
**Sinclair Delia 1X70 404**  
Octoraro Delia 404

Emulation N Bar 5522  
N Bar Primrose 2424  
N Bar Trademark 1949  
N Bar Clova Pride 7356  
Emulation N Bar 5522  
N Bar Primrose 2424  
Emulation N Bar 5522  
Octoraro Delia 503

Individual	Actual Birth Wt	78
Individual	Adj. Weaning Wt	622
Individual	Adj. Yearling Wt	1131
Inbreeding Coefficient: 21.09%		
EPDs	CED	7
EPDs	BW	-3
EPDs	WW	42
EPDs	YW	67
EPDs	Milk	22
EPDs	\$W	41.62
EPDs	\$EN	4.32

🐾 Low birth weight bull from the good Delia cow family. Rapid early growth with optimum mature size represented here.

**LOT 97** **Sinclair Emulation 8FA4**  
BULL 19169693 DOB: 02/15/18 TATTOO: 8FA4

Sinclair Emulation 0F4  
**Sinclair Emulation 6FX2**  
Sinclair K Bty 7FA18 4P85

N Bar Prime Time D806  
**Sinclair Primrose 8P3 E002**  
N Bar Primrose 1985B

Emulation N Bar 5522  
N Bar Kinchtry Bty SCC 2V3  
N Bar Emulation Ext A1747  
Sinclair K Beauty 4P85 E118  
Gardens Prime Time  
N Bar Miss Emulous A404  
N Bar Emulation EXT  
Primrose N Bar 8881

Individual	Actual Birth Wt	71
Individual	Adj. Weaning Wt	604
Individual	Adj. Yearling Wt	993
Inbreeding Coefficient: 11.99%		
EPDs	CED	11
EPDs	BW	-1.4
EPDs	WW	35
EPDs	YW	59
EPDs	Milk	21
EPDs	\$W	34.64
EPDs	\$EN	9.09

🐾 Arrive Alive calving ease bull from an 11 year- old cow that has plenty of maternal instincts to keep her calf alive.



N Bar Emulation Ext A1747

**LOT 98** **Sinclair Emulation 8FB7**  
BULL 19281322 DOB: 03/09/18 TATTOO: 8FB7

Emulation N Bar 5522  
**Sinclair Emulation 2F7**  
N Bar Enchantress 4908

N Bar Shadow X4124  
**Sinclair C Pride 8520 5P97**  
Sinclair C Pride 5P97 3G32

Emulation 31  
Ankony 8F78 Lass 8F275  
Basin Emulation 5953  
Coffey Enchantress 424  
N Bar Emulation EXT  
N Bar Enchantress 4908  
N Bar Prime Time D806  
Sinclair C Pride 3G32 J99

Individual	Actual Birth Wt	75
Individual	Adj. Weaning Wt	614
Individual	Adj. Yearling Wt	1123
Inbreeding Coefficient: 13.95%		
EPDs	CED	5
EPDs	BW	-5
EPDs	WW	27
EPDs	YW	46
EPDs	Milk	13
EPDs	\$W	17.42
EPDs	\$EN	24.81

🐾 Calving ease bull from an 11 year- old cow that causes no extra work.

**LOT 95** **Sinclair Express 8V23**  
BULL 19168768 DOB: 02/13/18 TATTOO: 8V23

N Bar Emulation EXT  
**N Bar Emulation Ext A1747**  
N Bar Clova Pride U3031

N Bar Emulation EXT  
**Sinclair Primrose XXX 9X99**  
Sinclair Primrose 6X40 A14

Emulation N Bar 5522  
N Bar Primrose 2424  
N Bar Trademark 1949  
N Bar Clova Pride 7356  
Emulation N Bar 5522  
N Bar Primrose 2424  
N Bar Emulation EXT  
N Bar Primrose Y3051

Individual	Actual Birth Wt	73
Individual	Adj. Weaning Wt	614
Individual	Adj. Yearling Wt	1115
Inbreeding Coefficient: 25.59%		
EPDs	CED	8
EPDs	BW	-1.1
EPDs	WW	42
EPDs	YW	71
EPDs	Milk	18
EPDs	\$W	36.93
EPDs	\$EN	7.83

🐾 This bull has handled close breeding very well and offers you a chance at some prepotent genetics. Look at how he is bred, give me a call and tell me what you think.

**LOT 99** **Sinclair Emulation 8FB8**  
BULL 19283999 DOB: 03/09/18 TATTOO: 8FB8

Emulation N Bar 5522  
**Sinclair Emulation 2F7**  
N Bar Enchantress 4908

Sinclair Emulation 5522 XP  
**Sinclair Lady Ida 3FE19 7V63**  
Sinclair Laady Ida 7V63 B5

Emulation 31  
Ankony 8F78 Lass 8F275  
Basin Emulation 5953  
Coffey Enchantress 424  
Emulation N Bar 5522  
N Bar Primrose Y3051  
N Bar Emulation Ext A1747  
N Bar Lady Ida Z262

Individual	Actual Birth Wt	70
Individual	Adj. Weaning Wt	529
Individual	Adj. Yearling Wt	1097
Inbreeding Coefficient: 12.58%		
EPDs	CED	7
EPDs	BW	-1.4
EPDs	WW	28
EPDs	YW	47
EPDs	Milk	16
EPDs	\$W	23.30
EPDs	\$EN	20.63

🐾 Calving ease option from a nice young cow.



**LOT 100** **Sinclair Piney Creek 8FV3**  
BULL 19279834 DOB: 03/12/18 TATTOO: 8FV3

Sinclair Emulation 5522 XP  
**Sinclair X-Changer 2FE9**  
Sinclair Blackie 7V3 2P18

Sinclair Executive 9XV2  
**Sinclair Blkcap 4U5 602**  
Sinclair Blkcap 602 A26

Emulation N Bar 5522  
N Bar Primrose Y3051  
N Bar Emulation Ext A1747  
Sinclair Blackie 2P18 4452  
N Bar Emulation Ext V722  
N Bar Primrose Y3051  
Sinclair Pioneer 1F3  
Rito Majesty 4A26 of F0203

Individual	Actual Birth Wt	85
	Adj. Weaning Wt	576
	Adj. Yearling Wt	1091
Inbreeding Coefficient: 8.15%		
EPDs	CED	6
	Milk	17
	BW	.8
	\$W	28.46
	WW	38
	\$EN	10.85
	YW	67

🐾 The older the 2FE9 daughters get -I am glad we have more of them coming!

**LOT 104** **Sinclair Right Time 8NT16**  
BULL 19281290 DOB: 03/18/18 TATTOO: 8NT16

Sinclair In Time 9RT12  
**Sinclair Right Time 6NR1**  
Sinclair Primrose 1TL3 9XV1

Sinclair Rito 3R16  
**Sinclair Enchantress 5RA2**  
Sinclair Enchantress 1XT6

Leachman Right Time  
N Bar Enchantress 4908  
Sinclair Timeless 8BA4  
Sinclair Primrose 9XV1 A14  
Rito Revolve OR5  
Sinclair Primrose 6X40 A14  
Sinclair Extra 4X13  
Sinclair Enchantress 9SV13

Individual	Actual Birth Wt	72
	Adj. Weaning Wt	518
	Adj. Yearling Wt	1004
Inbreeding Coefficient: 8.11%		
EPDs	CED	8
	Milk	19
	BW	-2.0
	\$W	27.61
	WW	30
	\$EN	13.84
	YW	54

🐾 Arrive Alive calving ease bull from the Enchantress cow family.

**LOT 101** **Sinclair Piney Creek 8FV5**  
BULL 19279882 DOB: 03/14/18 TATTOO: 8FV5

Sinclair Emulation 5522 XP  
**Sinclair X-Changer 2FE9**  
Sinclair Blackie 7V3 2P18

O C C Emblazon 854E  
**Sinclair Enchantress WP 40E4**  
N Bar Enchantress WP F3619

Emulation N Bar 5522  
N Bar Primrose Y3051  
N Bar Emulation Ext A1747  
Sinclair Blackie 2P18 4452  
D H D Traveler 6807  
Dixie Erica of C H 1019  
N Bar Shadow X4124  
N Bar Enchantress A1376

Individual	Actual Birth Wt	80
	Adj. Weaning Wt	570
	Adj. Yearling Wt	1012
Inbreeding Coefficient: 5.00%		
EPDs	CED	8
	Milk	17
	BW	.3
	\$W	36.11
	WW	41
	\$EN	13.01
	YW	62

🐾 If you have some hard -doing cows, use this bull, he will make daughters that excel in a low input environment.



Sinclair Timeless 8BA4

**LOT 102** **Sinclair Right Time 8NT12**  
BULL 19284015 DOB: 03/12/18 TATTOO: 8NT12

Sinclair In Time 9RT12  
**Sinclair Right Time 6NR1**  
Sinclair Primrose 1TL3 9XV1

Sinclair Emulation 0F4  
**Sinclair Blacky 4FX24 0XT41**  
Sinclair Blacky 0XT41 8SV32

Leachman Right Time  
N Bar Enchantress 4908  
Sinclair Timeless 8BA4  
Sinclair Primrose 9XV1 A14  
Emulation N Bar 5522  
N Bar Kinochtry Bty SCC 2V3  
Dunlouse Jipsey Earl E161  
Sinclair Blacky 8SV32 6P18

Individual	Actual Birth Wt	52
	Adj. Weaning Wt	533
	Adj. Yearling Wt	944
Inbreeding Coefficient: 5.42%		
EPDs	CED	17
	Milk	24
	BW	-6.2
	\$W	31.89
	WW	25
	\$EN	13.46
	YW	39

🐾 Arrive Alive Calving ease bull. All bulls will be tested negative for BVD.

**LOT 105** **Sinclair Right Time 8NT19**  
BULL 19279799 DOB: 03/31/18 TATTOO: 8NT19

Sinclair In Time 9RT12  
**Sinclair Right Time 6NR1**  
Sinclair Primrose 1TL3 9XV1

Sinclair Vision X 857  
**Sinclair B Maid 1TL6 9X8**  
Sinclair B Maid 9X8 507E

Leachman Right Time  
N Bar Enchantress 4908  
Sinclair Timeless 8BA4  
Sinclair Primrose 9XV1 A14  
N Bar Shadow X4124  
N Bar Miss Emulous A404  
N Bar Emulation EXT  
C U Bemindful Maid 507E

Individual	Actual Birth Wt	80
	Adj. Weaning Wt	596
	Adj. Yearling Wt	1105
Inbreeding Coefficient: 11.12%		
EPDs	CED	11
	Milk	26
	BW	-3.1
	\$W	28.15
	WW	21
	\$EN	11.55
	YW	37

🐾 Calving ease bull from an ideal sized cow with spring of rib.

**LOT 103** **Sinclair Right Time 8NT15**  
BULL 19279904 DOB: 03/17/18 TATTOO: 8NT15

Sinclair In Time 9RT12  
**Sinclair Right Time 6NR1**  
Sinclair Primrose 1TL3 9XV1

Sinclair Broker 3RC33  
**Sinclair K Bty 5K18 1RL10**  
Sinclair K Bty 1RL10 E118

Leachman Right Time  
N Bar Enchantress 4908  
Sinclair Timeless 8BA4  
Sinclair Primrose 9XV1 A14  
Sinclair Entrepreneur 8R101  
Sinclair Lady Ida 8XV12 CS2  
Sinclair Rito Legacy 3R9  
N Bar Kinochtry Beauty Z1925

Individual	Actual Birth Wt	72
	Adj. Weaning Wt	600
	Adj. Yearling Wt	958
Inbreeding Coefficient: 5.67%		
EPDs	CED	9
	Milk	24
	BW	-2.3
	\$W	32.90
	WW	31
	\$EN	5.51
	YW	58

🐾 Low birth weight bull here that stems from the dam of Sinclair Entrepreneur 8R101.

**LOT 106** **Sinclair Right Time 8NT5**  
BULL 19281327 DOB: 03/04/18 TATTOO: 8NT5

Sinclair In Time 9RT12  
**Sinclair Right Time 6NR1**  
Sinclair Primrose 1TL3 9XV1

Sinclair Extra 4X13  
**Sinclair Blkcap 9XT0 2J92**  
Sinclair Blkcap 2J92 8285

Leachman Right Time  
N Bar Enchantress 4908  
Sinclair Timeless 8BA4  
Sinclair Primrose 9XV1 A14  
N Bar Emulation EXT  
N Bar Lady Ida S C C 2P37  
Ideal 8103 of Eldo 5110 5213  
Ideal 8285 of Ee 1254 664

Individual	Actual Birth Wt	74
	Adj. Weaning Wt	625
	Adj. Yearling Wt	1073
Inbreeding Coefficient: 5.12%		
EPDs	CED	11
	Milk	25
	BW	-3.2
	\$W	33.28
	WW	30
	\$EN	4.58
	YW	57

🐾 Arrive Alive calving ease bull from a 10 year- old mother.



**LOT 107** **Sinclair Elation 8SG8**  
BULL 19303494 DOB: 03/25/18 TATTOO: 8SG8

Sinclair Vision 35X12  
**Sinclair Elation 6SX1**  
Sinclair C Pride 2G72 7X34

Sinclair Entrepreneur 8R101  
**Sinclair Primrose 6RC1 8X9**  
Sinclair Primrose 8X9 A14

Sinclair Vision X 857  
Sinclair K Bty OF1 2V3  
Sinclair Grass Master  
Sinclair C Pride 7X34 K325  
R R Rito 707  
N Bar Kinchtry Beauty Z1925  
N Bar Emulation EXT  
N Bar Primrose Y3051

Individual	Actual Birth Wt	76
Individual	Adj. Weaning Wt	587
Individual	Adj. Yearling Wt	1118
Inbreeding Coefficient: 12.94%		
EPDs	CED	8
EPDs	Milk	20
EPDs	BW	.3
EPDs	\$W	33.98
EPDs	WW	39
EPDs	\$EN	6.97
EPDs	YW	67

Arrive Alive calving ease bull.

**LOT 110** **Sinclair Ritolation 8RA6**  
BULL 19279903 DOB: 03/15/18 TATTOO: 8RA6

Rito Revolve OR5  
**Sinclair Rito 3R16**  
Sinclair Primrose 6X40 A14

Sinclair Broker 3RC33  
**Sinclair Enchantress 5K14**  
Sinclair Enchantress OFE14

R R Rito 707  
Ideal 1456 of 8103 8114  
N Bar Emulation EXT  
N Bar Primrose Y3051  
Sinclair Entrepreneur 8R101  
Sinclair Lady Ida 8XV12 C52  
Sinclair Emulation 5522 XP  
Sinclair Enchantress 7PS2

Individual	Actual Birth Wt	74
Individual	Adj. Weaning Wt	565
Individual	Adj. Yearling Wt	1125
Inbreeding Coefficient: 8.54%		
EPDs	CED	5
EPDs	Milk	16
EPDs	BW	.2
EPDs	\$W	17.68
EPDs	WW	27
EPDs	\$EN	18.96
EPDs	YW	51

Arrive Alive calving ease bull from as easy fleshing productive cow line.

**LOT 108** **Sinclair Elation 8SG9**  
BULL 19275386 DOB: 03/31/18 TATTOO: 8SG9

Sinclair Vision 35X12  
**Sinclair Elation 6SX1**  
Sinclair C Pride 2G72 7X34

Sinclair Broker 3RC33  
**Sinclair K Bty 6K8 4FX23**  
Sinclair K Bty 4FX23 OXM18

Sinclair Vision X 857  
Sinclair K Bty OF1 2V3  
Sinclair Grass Master  
Sinclair C Pride 7X34 K325  
Sinclair Entrepreneur 8R101  
Sinclair Lady Ida 8XV12 C52  
Sinclair Emulation OF4  
Sinclair K Bty OXM18 8J8

Individual	Actual Birth Wt	75
Individual	Adj. Weaning Wt	586
Individual	Adj. Yearling Wt	1109
Inbreeding Coefficient: 9.31%		
EPDs	CED	9
EPDs	Milk	24
EPDs	BW	-.7
EPDs	\$W	39.01
EPDs	WW	39
EPDs	\$EN	1.21
EPDs	YW	68

Arrive Alive calving ease bull.



Sinclair Emulation XXP

**LOT 109** **Sinclair Ritolation 8RA4**  
BULL 19281298 DOB: 03/13/18 TATTOO: 8RA4

Rito Revolve OR5  
**Sinclair Rito 3R16**  
Sinclair Primrose 6X40 A14

Sinclair Timeless 8BA4  
**Sinclair Enchantress 5TL8**  
Sinclair Enchantress 3XV1

R R Rito 707  
Ideal 1456 of 8103 8114  
N Bar Emulation EXT  
N Bar Primrose Y3051  
Sinclair IN Time 6BT39  
Sinclair Blackbird 2P8 7079  
N Bar Emulation Ext V722  
N Bar Enchantress S C C 2F8

Individual	Actual Birth Wt	62
Individual	Adj. Weaning Wt	598
Individual	Adj. Yearling Wt	1174
Inbreeding Coefficient: 7.69%		
EPDs	CED	13
EPDs	Milk	20
EPDs	BW	-3.4
EPDs	\$W	29.65
EPDs	WW	30
EPDs	\$EN	12.53
EPDs	YW	54

Arrive Alive calving ease bull.

**LOT 111** **Sinclair Rollin Hills 8KF24**  
BULL 19168736 DOB: 02/18/18 TATTOO: 8KF24

Sinclair Broker 3RC33  
**Sinclair Rollin Coal 5K2**  
Sinclair Ms Emulous 1FE23

Sinclair Executive 9XV2  
**Sinclair Eileen 6U87 1 RC13**  
Sinclair Eileen 1RC13 7X46

Sinclair Entrepreneur 8R101  
Sinclair Lady Ida 8XV12 C52  
Sinclair Emulation 5522 XP  
Sinclair Ms Emulous 8F11  
N Bar Emulation Ext V722  
N Bar Primrose Y3051  
Sinclair Entrepreneur 8R101  
Sinclair Eileen 7X46 L228

Individual	Actual Birth Wt	78
Individual	Adj. Weaning Wt	641
Individual	Adj. Yearling Wt	1155
Inbreeding Coefficient: 15.70%		
EPDs	CED	2
EPDs	Milk	18
EPDs	BW	-.1
EPDs	\$W	30.92
EPDs	WW	38
EPDs	\$EN	9.57
EPDs	YW	67

Don't forget our bulls are developed to provide you with years of productive service.



Rito Revolve OR5

**LOT 112** **Sinclair Forte 8PF1**  
BULL 19250088 DOB: 02/20/18 TATTOO: 8PF1

Papa Optima 9818  
**Papa Forte 1921**  
Papa Envious Blackbird 8832

Sinclair Express 6V47  
**Sinclair E Bkbird 0BA29 5E4**  
Sinclair E Blackbird 5E4

Scotch Cap  
Blackbird D H D 2816  
Papa Rito T Power D H D 6838  
Envious Blackbird of RR 7066  
N Bar Emulation Ext A1747  
N Bar Queen Mother SCC 2F11  
N Bar Explosion  
Sinclair E Blackbird 2N12

Individual	Actual Birth Wt	81
Individual	Adj. Weaning Wt	580
Individual	Adj. Yearling Wt	1044
Inbreeding Coefficient: 4.43%		
EPDs	CED	9
EPDs	Milk	19
EPDs	BW	-.1
EPDs	\$W	27.95
EPDs	WW	33
EPDs	\$EN	12.14
EPDs	YW	58

Calving ease bull, with a twist in bloodlines.



**LOT 113** **Sinclair Promise 8PR1**  
 BULL 19275414 DOB: 02/23/18 TATTOO: 8PR1

Sinclair Promise 4RP15  
**Sinclair Promise 6RE2**  
 Sinclair Primrose 1V2 145K

Sinclair Timeless 8BA4  
**Sinclair K Bty 6TL13 4AA2**  
 Sinclair K Bty 4AA2 1P16

Sinclair Rito Promise OR12  
 Sinclair Eriskay 5E3 2N11  
 N Bar Emulation Ext A1747  
 N Bar Primrose A14C910  
 Sinclair IN Time 6BT39  
 Sinclair Blackbird 2P8 7079  
 Sinclair Emulation 1A2  
 Sinclair K Bty 1P16 E118

Individual	Actual Birth Wt	72
	Adj. Weaning Wt	607
	Adj. Yearling Wt	1049
Inbreeding Coefficient: 6.10%		
EPDs	CED	9
	Milk	26
	BW	-1.4
	\$W	37.43
	WW	34
	\$EN	1.93
	YW	60

🐾 Arrive Alive calving ease bull.

**LOT 115** **Sinclair Frontiersman 8Y1**  
 BULL 19275398 DOB: 02/10/18 TATTOO: 8Y1

O C C Great Plains 943G  
**Sinclair Frontiersman 60C2**  
 Sinclair Donna 6V1 2P33

Sinclair Timeless 8BA4  
**Sinclair Ms Emulous 6TL4**  
 Sinclair Ms Emulous 2FE42

N Bar Emulation EXT  
 Dixie Erica of CH 1019  
 N Bar Emulation Ext A1747  
 Sinclair Donna 2P33 B715  
 Sinclair IN Time 6BT39  
 Sinclair Blackbird 2P8 7079  
 Sinclair Emulation 5522 XP  
 Sinclair Ms Emulous 7rt1 a40

Individual	Actual Birth Wt	77
	Adj. Weaning Wt	604
	Adj. Yearling Wt	1001
Inbreeding Coefficient: 9.56%		
EPDs	CED	8
	Milk	23
	BW	-.3
	\$W	38.16
	WW	40
	\$EN	1.69
	YW	70

🐾 Arrive alive calving ease bull with maternal merits.

**LOT 114** **Sinclair Executive 8Y7**  
 BULL 19289339 DOB: 03/13/18 TATTOO: 8Y7

Sinclair Executive 9XV2  
**Sinclair Executive 6U31**  
 Sinclair Enchantress OFE14

Sinclair Timeless 8BA4  
**Sinclair Blkbird 5TL11 3RP15**  
 Sinclair Blkbird 3RP15 0X17

N Bar Emulation Ext V722  
 N Bar Primrose Y3051  
 Sinclair Emulation 5522 XP  
 Sinclair Enchantress 7PS2  
 Sinclair IN Time 6BT39  
 Sinclair Blackbird 2P8 7079  
 Sinclair Rito Promise OR12  
 Sinclair Blkbird 0X17 G352

Individual	Actual Birth Wt	82
	Adj. Weaning Wt	568
	Adj. Yearling Wt	1181
Inbreeding Coefficient: 9.25%		
EPDs	CED	4
	Milk	22
	BW	.4
	\$W	24.63
	WW	30
	\$EN	7.34
	YW	60

🐾 Herd Builder.

**LOT 116** **Sinclair Frontiersman 8Y2**  
 BULL 19168707 DOB: 01/29/18 TATTOO: 8Y2

O C C Great Plains 943G  
**Sinclair Frontiersman 60C2**  
 Sinclair Donna 6V1 2P33

Sinclair Broker 3RC33  
**Sinclair Lady Ida 6K6 4FX7**  
 Sinclair Lady Ida 4FX7 0X16

N Bar Emulation EXT  
 Dixie Erica of CH 1019  
 N Bar Emulation Ext A1747  
 Sinclair Donna 2P33 B715  
 Sinclair Entrepreneur 8R101  
 Sinclair Lady Ida 8XV12 C52  
 Sinclair Emulation OF4  
 Sinclair Lady Ida 0X16 04F3

Individual	Actual Birth Wt	85
	Adj. Weaning Wt	624
	Adj. Yearling Wt	1237
Inbreeding Coefficient: 6.30%		
EPDs	CED	6
	Milk	22
	BW	.7
	\$W	41.29
	WW	45
	\$EN	0.83
	YW	75

🐾 Herd builder. Thank you for your interest in our program.



## It is our privilege to inform people who may not otherwise hear about all the good Ranchers do!

At Sinclair Cattle Company, we proudly serve the industry that we are an active part of. We know that ranchers are busy making a living, and there are many times that all the good work ranchers do goes unnoticed. Ranchers spend a lot of time on the defense, and they often don't have a way to counter the false ideas and information put out to the general public. That is why Sinclair Cattle Company is taking an active role on social media platforms, such as Facebook, to tell others about the great things that ranchers do for their livestock, the land and the environment. We call this effort **"Ranchers on Offense."**

Through this site, we'll target people who don't get a chance to hear about the positive things our industry does every day. And you can help us by letting us know about the positive things you've seen done by the folks in our industry. Send your stories, photos or information to [sinclaircattle@gmail.com](mailto:sinclaircattle@gmail.com), and we'll post the information. We look forward to hearing from you and posting stories from your homes and communities. To see our **Ranchers on Offense Facebook Page**, visit [sinclaircattle.com](http://sinclaircattle.com).



**LOT 117** **Sinclair Lady 8RC1 7RL30**  
HEIFER 19364727 DOB: 01/20/18 TATTOO: 8RC1

R R Rito 707  
**Sinclair Entrepreneur 8R101**  
N Bar Kinchtry Beauty Z1925  
Sinclair Rito Legacy 3R9  
**Sinclair Lady 7RL30 1C8**  
Sinclair Lady 1C8 4465

Rito N Bar  
Eriskay of Rollin Rock 3  
N Bar Emulation EXT  
N Bar Kinchtry Beauty 4310  
R R Rito 707  
Ideal 4465 of 6807 4286  
Papa Rito T Intense DHD 6844  
Ideal 4465 of 6807 4286

Individual	Actual Birth Wt	84
	Adj. Weaning Wt	510
	Dam Calving Interval	495
	Dam Weaning Ratio	106
Inbreeding Coefficient: 6.25%		
EPDs	CED	-1
	BW	3.2
	WW	42
	YW	70

☞ This heifer will have an impact wherever she lands. Her sire Sinclair Entrepreneur 8R101 has done well, making a name for himself who sires thick progeny with added muscle. The dam of Lot 117 had many fans when she sold, bringing top dollar, she has progeny working well in multiple countries. This heifer will be a foundation to help your operation be profitable.

*Lady  
Cow Family*



Sinclair Lady 7RL30 1C8

**LOT 118** **Sinclair Lady 8UR5 2TL13**  
HEIFER 19169655 DOB: 02/14/18 TATTOO: 8UR5

Sinclair Executive 9XV2  
**Sinclair Exactly 4U2**  
Sinclair Lady 0R109 03S3  
Sinclair Timeless 8BA4  
**Sinclair Lady 2TL13 0X35**  
Sinclair Lady 0X35 3M17

N Bar Emulation Ext V722  
N Bar Primrose Y3051  
R R Rito 707  
Sinclair Lady 03S3 4465  
Sinclair IN Time 6BT39  
Sinclair Blackbird 2P8 7079  
N Bar Emulation EXT  
Sinclair Lady 3M17 4465

Individual	Actual Birth Wt	78
	Adj. Weaning Wt	553
	Dam Calving Interval	349
	Dam Weaning Ratio	110
Inbreeding Coefficient: 8.35%		
EPDs	CED	4
	BW	.4
	WW	45
	YW	77

☞ This classy heifer combines productive cows in a sensible mature size. Good feet and legs in this nice heifer's bloodline. She is ready for whichever direction you decide to take her.

*Lady  
Cow Family*



N Bar Kinchtry Beauty Z1925 "E118"

**LOT 119** **Sinclair Pride 8BT11 4XX7**  
HEIFER 19169637 DOB: 02/22/18 TATTOO: 8BT11

Leachman Right Time  
**BT Right Time 24J**  
Sitz Everelda Entense 1905  
Sinclair Emulation XXP  
**Sinclair Pride 4XX7 0A9**  
Sinclair Pride 0A9 7XT11

N Bar Emulation EXT  
Leachman Erica 0025  
Traveler 124 G D A R  
Sitz Everelda Entense 1791  
N Bar Emulation EXT  
N Bar Primrose Y3051  
Emulation 31  
Sinclair Pride 7XT11 5H7

Individual	Actual Birth Wt	77
	Adj. Weaning Wt	526
	Dam Calving Interval	377
	Dam Weaning Ratio	100
Inbreeding Coefficient: 7.23%		
EPDs	CED	6
	BW	.5
	WW	42
	YW	71

☞ Strong maternal instinct in lot 119. We have her grandmother producing at 9 years old, she is an easy keeping high volume cow that calves early every year and has an average wean ratio of 104. The 24J daughters, as you know, have worked well for a lot of different operations. This heifer offers you the chance to make a choice when you breed her- will you continue with her bloodline or will you mix it up and create something new? Either way she is a solid foundation.

*Pride  
Cow Family*



Sinclair Lady 0X35 3M17

*Sinclair Cattle Company is offering two straws of semen of which we have an adequate supply for each registered heifer. Semen is stored at Billings Hawkeye West and buyer is responsible for shipping. The buyer can use the semen on any animal he or she chooses. Any questions please call Logan at 307-254-1477.*



**LOT 120**

## Sinclair K Bty 8BT15 4XX35

HEIFER 19169641 DOB: 03/01/18 TATTOO: 8BT15

Leachman Right Time  
BT Right Time 24J  
Sitz Everelda Entense 1905

Sinclair Emulation XXP  
Sinclair K Bty 4XX35 9JP44  
Sinclair K Bty 9JP44 E118

N Bar Emulation EXT  
Leachman Erica 0025  
Traveler 124 G D A R  
Sitz Everelda Entense 1791  
N Bar Emulation EXT  
N Bar Primrose Y3051  
Dunlouse Jipsey Earl E161  
N Bar Kinochtry Beauty Z1925

Individual	Actual Birth Wt	74		
	Adj. Weaning Wt	521		
	Dam Calving Interval	380		
	Dam Weaning Ratio	105		
Inbreeding Coefficient: 6.45%				
EPDs	CED	5	Milk	24
	BW	.6	\$W	42.45
	WW	43	\$EN	.34
	YW	70		

Are you a low input operation that demands a certain level of production? Lot 120 gives you the chance to do that with a mature size that works, low maintenance needs and a history of productivity.

*Kinochtry Beauty  
Cow Family*



BT Right Time 24J

**LOT 121**

## Sinclair K Bty 8U2 6TT6

HEIFER 19168757 DOB: 01/30/18 TATTOO: 8U2

N Bar Emulation Ext V722  
Sinclair Executive 9XV2  
N Bar Primrose Y3051

Sinclair Sun Dial 4TL2  
Sinclair K Bty 6TT6 4XX35  
Sinclair K Bty 4XX35 9JP44

N Bar Emulation EXT  
N Bar Blackbird 4307  
N Bar Emulation EXT  
N Bar Primrose 2429  
Sinclair Timeless 8BA4  
Sinclair K Bty 2X7 6MB8  
Sinclair Emulation XXP  
Sinclair K Bty 9JP44 E118

Individual	Actual Birth Wt	78		
	Adj. Weaning Wt	573		
	Dam Calving Interval			
	Dam Weaning Ratio	106		
Inbreeding Coefficient: 9.77%				
EPDs	CED	6	Milk	25
	BW	-1	\$W	35.0
	WW	37	\$EN	-1.0
	YW	70		

Hey I just had a customer tell me how well he likes his Executive daughters. I agree, they make nice cows with the type and kind I gotta have. Notice on this heifer how we have 2 different sire/daughter matings and then a half sib mating to top it all off. Here is a heifer with genetics made to be used as a tool. This heifer traces back to the mother of Sinclair Entrepreneur 8R101 on her bottom side as an added bonus.

*Kinochtry Beauty  
Cow Family*



N Bar Kinochtry Beauty Z1925 "E118"



Sinclair Emulation XXP

**LOT 122**

## Sinclair Ms Emulous 8FA1 0R2

HEIFER 19169690 DOB: 02/10/18 TATTOO: 8FA1

Sinclair Emulation OF4  
Sinclair Emulation 6FX2  
Sinclair K Bty 7FA18 4P85

Rito Revolve 0R5  
Sinclair Ms Emulous 0R2 G470  
N Bar Miss Emulous D477

Emulation N Bar 5522  
N Bar Kinochtry Bty SCC 2V3  
N Bar Emulation Ext A1747  
Sinclair K Beauty 4P85 E118  
R R Rito 707  
Ideal 1456 of 8103 8114  
Gardens Escort  
N Bar Miss Emulous B514

Individual	Actual Birth Wt	74		
	Adj. Weaning Wt	552		
	Dam Calving Interval	366		
	Dam Weaning Ratio	105		
Inbreeding Coefficient: 4.59%				
EPDs	CED	6	Milk	21
	BW	.1	\$W	40.53
	WW	44	\$EN	3.04
	YW	73		

The right kind of heifer here that comes from the Miss Emulous cow family. She has all the bases covered, good feet and legs, udders that are built right and last for years and productivity coupled with fertility.

*Emulous  
Cow Family*



Rito Revolve 0R5



*Will provide heifer yearling data  
along with carcass ultrasound at  
sale or we can email it if requested*



**LOT 123** **Sinclair Ms Emulous 8RB7**  
HEIFER 19279851 DOB: 03/11/18 TATTOO: 8RB7

Sinclair Rito 2R1  
**Sinclair Rito 4RX3**  
Sinclair Q Mother 1XX13 7R4  
  
N Bar Shadow X4124  
**Sinclair Ms Emulous 2517 D80**  
N Bar Miss Emulous A404

Rito Revolve OR5  
N Bar Miss Emulous A404  
Sinclair Emulation XXP  
Sinclair Q Mother 7R4 E008  
N Bar Emulation EXT  
N Bar Enchantress 4908  
N Bar Emulation Ext Z52  
N Bar Miss Emulous X3091

Individual	Actual Birth Wt	78		
	Adj. Weaning Wt	531		
	Dam Calving Interval	373		
	Dam Weaning Ratio	110		
Inbreeding Coefficient: 14.60%				
EPDs	CED	5	Milk	18
	BW	.2	\$W	30.19
	WW	37	\$EN	10.86
	YW	64		

🐾 This heifer traces multiple times to long lived productive herd bull making matrons. This heifer has a bright future I hope she goes to a young person because she will have a long productive life.

*Emulous  
Cow Family*



N Bar Miss Emulous A404 "D80"

**LOT 125** **Sinclair Blkcap 8UR1 6HX1**  
HEIFER 19168743 DOB: 01/23/18 TATTOO: 8UR1

Sinclair Executive 9XV2  
**Sinclair Exactly 4U2**  
Sinclair Lady OR109 03S3  
  
Sinclair Line-XX 2H1  
**Sinclair Blkcap 6HX1 4U5**  
Sinclair Blkcap 4U5 602

N Bar Emulation Ext V722  
N Bar Primrose Y3051  
R R Rito 707  
Sinclair Lady 03S3 4465  
Sinclair Line X 8XV6  
Sinclair Primrose 9IT13 5R47  
Sinclair Executive 9XV2  
Sinclair Blkcap 602 A26

Individual	Actual Birth Wt	61	
	Adj. Weaning Wt	598	
	Dam Calving Interval		
	Dam Weaning Ratio	111	
Inbreeding Coefficient: 12.21%			
EPDs	CED	9	Milk 20
	BW	-.5	\$W 36.20
	WW	38	\$EN 9.55
	YW	61	

🐾 I like how this heifer blends in Emulation and Rito bloodlines with an extra shot thru F0203. We will have videos at [sinclaircattle.com](http://sinclaircattle.com) of all the heifers and bulls.

*Blackcap  
Cow Family*



N BAR Primrose 324B "D011"

**LOT 124** **Sinclair Ms Emulous 8RB9**  
HEIFER 19284036 DOB: 03/13/18 TATTOO: 8RB9

Sinclair Rito 2R1  
**Sinclair Rito 4RX3**  
Sinclair Q Mother 1XX13 7R4  
  
O C C Great Plains 943G  
**Sinclair Ms Emulous 50C14**  
Sinclair Ms Emulous 3TL26

Rito Revolve OR5  
N Bar Miss Emulous A404  
Sinclair Emulation XXP  
Sinclair Q Mother 7R4 E008  
N Bar Emulation EXT  
Dixie Erica of CH 1019  
Sinclair Timeless 8BA4  
Sinclair Ms Emulous 1TX2

Individual	Actual Birth Wt	76		
	Adj. Weaning Wt	504		
	Dam Calving Interval	359		
	Dam Weaning Ratio	111		
Inbreeding Coefficient: 9.82%				
EPDs	CED	5	Milk	19
	BW	1.1	\$W	28.64
	WW	39	\$EN	5.22
	YW	74		

🐾 This heifer traces back thru the Miss Emulous cow family thru D47 who did many things right and has a large impact on our program.

*Emulous  
Cow Family*



N BAR Miss Emulous B514 "D47"

**LOT 126** **Sinclair Erica 8UR2 6HX24**  
HEIFER 19168744 DOB: 01/24/18 TATTOO: 8UR2

Sinclair Executive 9XV2  
**Sinclair Exactly 4U2**  
Sinclair Lady OR109 03S3  
  
Sinclair Line-XX 2H1  
**Sinclair Erica 6HX24 4XX32**  
Sinclair Erica 4XX32 7XA13

N Bar Emulation Ext V722  
N Bar Primrose Y3051  
R R Rito 707  
Sinclair Lady 03S3 4465  
Sinclair Line X 8XV6  
Sinclair Primrose 9IT13 5R47  
Sinclair Emulation XXP  
Sinclair Erica 7xa13 762

Individual	Actual Birth Wt	60		
	Adj. Weaning Wt	540		
	Dam Calving Interval			
	Dam Weaning Ratio	100		
Inbreeding Coefficient: 10.30%				
EPDs	CED	8	Milk	18
	BW	-.3	\$W	33.66
	WW	39	\$EN	10.43
	YW	65		

🐾 A ¾ sister to lot 125. Easy keeping feminine type of heifer here.

*Erica  
Cow Family*



*Will provide heifer yearling data  
along with carcass ultrasound at  
sale or we can email it if requested*



**LOT 127**  
**Sinclair Erica 8L19 2FE2**  
 HEIFER 19169680 DOB: 02/23/18 TATTOO: 8L19

Sinclair Patriarch 3847  
**Sinclair Plains Boss 5B02**  
 Sinclair Lady Ida 7V19 04F3  
 Sinclair Emulation 5522 XP  
**Sinclair Erica 2FE2 8BT12**  
 Sinclair Erica 8BT12 A18

Sinclair Boss  
 Sinclair Lady Ida 70C7 2V11  
 N Bar Emulation Ext A1747  
 Sinclair Lady Ida 04F3 B154  
 Emulation N Bar 5522  
 N Bar Primrose Y3051  
 BT Right Time 24J  
 Rito Majesty 4A18 of F0203

Individual	Actual Birth Wt	75
	Adj. Weaning Wt	505
	Dam Calving Interval	367
	Dam Weaning Ratio	103
Inbreeding Coefficient: 10.40%		
EPDs	CED	6
	BW	.6
	WW	48
	YW	86
	Milk	21
	\$W	40.24
	\$EN	-2.72

She is beauty, she is grace, she is a beautiful Angus heifer in the United States. If you want to make great cows you need to have the right type. Check out this heifer.

Erica  
Cow Family



Sinclair Lady Ida 7V19 04F3



N Bar Primrose Y3051 "A14"

**LOT 128**  
**Sinclair Lady 8V16 2X4**  
 HEIFER 19169708 DOB: 02/17/18 TATTOO: 8V16

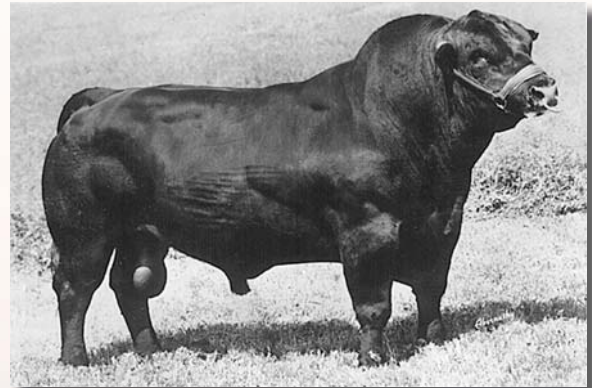
N Bar Emulation EXT  
**N Bar Emulation Ext A1747**  
 N Bar Clova Pride U3031  
 N Bar Emulation EXT  
**Sinclair Lady 2X4 9RN4**  
 Sinclair Lady 9RN4 1C8

Emulation N Bar 5522  
 N Bar Primrose 2424  
 N Bar Trademark 1949  
 N Bar Clova Pride 7356  
 Emulation N Bar 5522  
 N Bar Primrose 2424  
 Rito N Bar  
 Sinclair Lady 1C8 4465

Individual	Actual Birth Wt	80
	Adj. Weaning Wt	530
	Dam Calving Interval	367
	Dam Weaning Ratio	109
Inbreeding Coefficient: 14.06%		
EPDs	CED	1
	BW	1.7
	WW	44
	YW	74
	Milk	22
	\$W	38.18
	\$EN	1.27

EXT on EXT with a dash of Rito N Bar and shot of 4465. This is the only place you will find a recipe like this. Who will you breed this heifer to?

Erica  
Cow Family



Rito N Bar

**LOT 129**  
**Sinclair Lady 8VR3 4FC2**  
 HEIFER 19250089 DOB: 02/23/18 TATTOO: 8VR3

Rito 2100 G D A R  
**V D A R Rito 953**  
 Miss Wix 903 of Mc Cumber  
 N Bar Emulation 5522 4245A  
**Sinclair Lady 4FC2 2TL28**  
 Sinclair Lady 2TL28 9JP22

Rito Ever 865 G D A R  
 Blackcap Lady 999 G D A R  
 Rito 054 G D A R  
 Miss Wix 365 of Mc Cumber  
 Emulation N Bar 5522  
 Coffey Enchantress 424  
 Sinclair Timeless 8BA4  
 Sinclair Lady 9JP22 5X23

Individual	Actual Birth Wt	80
	Adj. Weaning Wt	586
	Dam Calving Interval	374
	Dam Weaning Ratio	113
Inbreeding Coefficient: 0.20%		
EPDs	CED	3
	BW	.0
	WW	35
	YW	63
	Milk	32
	\$W	40.80
	\$EN	-7.78

Capture the benefits of cow makers like Candolier Forever 376, N Bar Emulation 5522, Rito 054, Sinclair Timeless along with many others in this silky made heifer.

Lady  
Cow Family



V D A R Rito 953

I don't make jokes. I just watch the government and report the facts. Will Rogers



# **LOT 130** *Sinclair Eriskay 8OV4 5O2*

HEIFER 19279837 DOB: 03/11/18 TATTOO: 8OV4

Sinclair Emperor 0XT51  
**Sinclair Emperor 6X02**  
 Sinclair Ms Emulous 2V20 A40  
 Basin Rainmaker 654X  
**Sinclair Eriskay 5O2 2N1**  
 Sinclair Eriskay 2N1 7883

Sinclair Extra 4X13  
 Sinclair Bkbird 70C10 J472  
 N Bar Emulation Ext A1747  
 N Bar Miss Emulous X3091  
 Basin Rainmaker D S 380U  
 Basin Bardolene 423U  
 D H D Traveler 6807  
 Papa Eriskay 7883

Individual	Actual Birth Wt	62		
	Adj. Weaning Wt	567		
	Dam Calving Interval	391		
	Dam Weaning Ratio	114		
Inbreeding Coefficient:		0.49%		
EPDs	CED	12	Milk	26
	BW	-2.2	\$W	40.53
	WW	38	\$EN	-2.39
	YW	70		

⚡ This heifer blends several really good cows up close in her pedigree. Note the mother to the sire of lot 130 is also the mother of Lot 13.

*Eriskay  
Cow Family*



Basin Rainmaker 654X

# **LOT 131** *Sinclair Nalie 8BX3 9JP4*

HEIFER 19281323 DOB: 03/02/18 TATTOO: 8BX3

Sinclair Emulation XXP  
**Sinclair X-Plus 4XX54**  
 Sinclair Lady Ida 8XV12 C52  
 Dunlouse Jipsey Earl E161  
**Sinclair Nalie 9JP4 7F1**  
 Sinclair Nalie 7F1 D17

N Bar Emulation EXT  
 N Bar Primrose Y3051  
 N Bar Emulation Ext V722  
 N Bar Lady Ida Z1453  
 Betro of Classlochie  
 Dunlouse Jipsey Clova C095  
 Emulation N Bar 5522  
 N Bar Nalie B44

Individual	Actual Birth Wt	82		
	Adj. Weaning Wt	615		
	Dam Calving Interval	369		
	Dam Weaning Ratio	109		
Inbreeding Coefficient: 5.91%				
EPDs	CED	1	Milk	28
	BW	1.9	\$W	45.99
	WW	45	\$EN	-5.59
	YW	71		

⚡ Don't miss this heifer. She has my favorite Jipsey Earl daughter as a grandmother and her sire did very well on feed efficiency tests. Her Paternal brother is pictured here to give you an idea of what can be produced.

*Nalie  
Cow Family*



Sinclair Emulation XXP



Sinclair Bob 7BX4



Dunlouse Jipsey Earl

**MORE PROFIT**  
Per Acre



**LESS WORK**  
Per Head



**LOT 132** **Sinclair Blkbird 8K1 6FV14**  
HEIFER 19168710 DOB: 01/24/18 TATTOO: 8K1

Sinclair Entrepreneur 8R101  
**Sinclair Broker 3RC33**  
Sinclair Lady Ida 8XV12 C52  
  
Sinclair X-Changer 2FE9  
**Sinclair Blkbird 6FV14 7X45**  
Sinclair Blkbird 7X45 2P8

R R Rito 707  
N Bar Kinchtry Beauty Z1925  
N Bar Emulation Ext V722  
N Bar Lady Ida Z1453  
Sinclair Emulation 5522 XP  
Sinclair Blackie 7V3 2P18  
N Bar Emulation EXT  
Sinclair Blackbird 2P8 7079

Individual	Actual Birth Wt	62		
	Adj. Weaning Wt	503		
	Dam Calving Interval			
	Dam Weaning Ratio	101		
Inbreeding Coefficient: 6.93%				
EPDs	CED	7	Milk	20
	BW	-.4	\$W	37.31
	WW	41	\$EN	6.10
	YW	69		

Lot 132 goes back to the dam of Sinclair Fortunate Son and Sinclair Timeless- Sinclair Blackbird 2P8 7079. Thru a daughter of 2P8 who is 12 and calves every year on time, lot 132 comes to you thru a good line of cows.

*Blackbird  
Cow Family*



Sinclair Blkbird 7X45 2P8

**LOT 133** **Sinclair Blacky 8VF7 0XT41**  
HEIFER 19281337 DOB: 03/08/18 TATTOO: 8VF7

N Bar Emulation Ext A1747  
**Sinclair Express 2V26**  
N Bar Enchantress S C C 2F8  
  
Dunlouse Jipsey Earl E161  
**Sinclair Blacky 0XT41 8SV32**  
Sinclair Blacky 8SV32 6P18

N Bar Emulation EXT  
N Bar Clova Pride U3031  
Emulation N Bar 5522  
N Bar Enchantress X4126  
Betro of Classlochie  
Dunlouse Jipsey Clova C095  
Sinclair Telecast 0153  
Sinclair Blacky 6P18 J126

Individual	Actual Birth Wt	76		
	Adj. Weaning Wt	522		
	Dam Calving Interval	371		
	Dam Weaning Ratio	105		
Inbreeding Coefficient: 3.56%				
EPDs	CED	5	Milk	26
	BW	-1	\$W	39.67
	WW	35	\$EN	4.48
	YW	54		

Here is a heifer that combines the dam of N Bar Shadow and N Bar Emulation 5522 with a solid dam that is 9 years old and working hard and doing a good job for us.

*Blacky  
Cow Family*



S C C Enchantress 3F2 X412

**LOT 134** **Sinclair C Pride 8WC8 2X9**  
HEIFER 19279826 DOB: 03/11/18 TATTOO: 8WC8

Wandering CRK Dynasty JRM 2F  
**Sinclair Dynasty 3WCD7**  
Sinclair Eriskay 2N1 7883  
  
N Bar Emulation EXT  
**Sinclair C Pride 2X9 9NZ12**  
Sinclair C Pride 9NZ12 4NI42

Eston Encounter M G 55 71  
Rose G V 37U  
D H D Traveler 6807  
Papa Eriskay 7883  
Emulation N Bar 5522  
N Bar Primrose 2424  
Pinebank Waigroup 41/97  
Sinclair Blackbird 4NI42 1C4

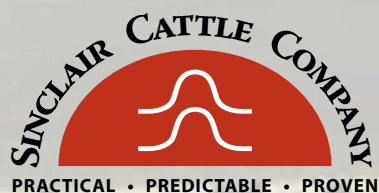
Individual	Actual Birth Wt	86		
	Adj. Weaning Wt	503		
	Dam Calving Interval	356		
	Dam Weaning Ratio	97		
Inbreeding Coefficient:		0.39%		
EPDs	CED	2	Milk	19
	BW	2.6	\$W	27.93
	WW	38	\$EN	10.43
	YW	62		

Lot 134 is stacked full of correct made long lived productive cows.

*C Pride  
Cow Family*



Sinclair Fortunate Son



*Will provide heifer yearling data  
along with carcass ultrasound at  
sale or we can email it if requested*



Sinclair Eriskay 2N1 7883



**LOT 135** **Sinclair Blkbird 8FT10**  
HEIFER 19168725 DOB: 02/02/18 TATTOO: 8FT10

Sinclair Emulation 0F4  
**Sinclair Emulation 4FX1**  
Sinclair M Emulous 4ET1 D47  
  
Sinclair Executive 9XV2  
**Sinclair Blkbird 6U52 3JR15**  
Sinclair Blkbird 3JR15 8375

Emulation N Bar 5522  
N Bar Kinochtry Bty SCC 2V3  
N Bar Explosion TNT  
N Bar Miss Emulous B514  
N Bar Emulation Ext V722  
N Bar Primrose Y3051  
Ideal 1418 of 8103 4286  
Ideal 8375 Super X 5189 2203

Individual	Actual Birth Wt	68
	Adj. Weaning Wt	630
	Dam Calving Interval	
	Dam Weaning Ratio	117
Inbreeding Coefficient: 6.71%		
EPDs	CED	8
	BW	.0
	Milk	24
	SW	45.21
EPDs	WW	49
	SEN	-7.18
EPDs	YW	87

Some very good Emulation breeding anchored by a cow (8375) who had many fans.

*Blackbird  
Cow Family*



Sinclair Executive 9XV2

**LOT 136** **Sinclair Blkbird 8EE11 6K19**  
HEIFER 19168730 DOB: 02/04/18 TATTOO: 8EE11

Sinclair Emulation 5522 XP  
**Sinclair X-Changer 5FE15**  
Sinclair M Emulous 4ET1 D47  
  
Sinclair Broker 3RC33  
**Sinclair Blkbird 6K19 3FX2**  
Sinclair Blkbird 3FX2 1XT11

Emulation N Bar 5522  
N Bar Primrose Y3051  
N Bar Explosion TNT  
N Bar Miss Emulous B514  
Sinclair Entrepreneur 8R101  
Sinclair Lady Ida 8XV12 C52  
Sinclair Emulation 0F4  
Sinclair Blkbird 1XT11 9BA9

Individual	Actual Birth Wt	72
	Adj. Weaning Wt	513
	Dam Calving Interval	
	Dam Weaning Ratio	103
Inbreeding Coefficient: 8.44%		
EPDs	CED	5
	BW	.2
	Milk	20
	SW	34.72
EPDs	WW	38
	SEN	9.12
EPDs	YW	62

Nice heifer here from a good cow family that sticks around and does a good job for us. Thank you for your interest in our program.

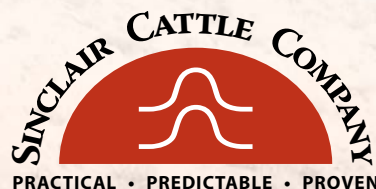
*Blackbird  
Cow Family*



Sinclair M Emulous 4ET1

*"Labor to keep alive in your breast  
that little spark of celestial  
fire, called conscience."*

*George Washington*



*Will provide heifer yearling data  
along with carcass ultrasound at  
sale or we can email it if requested*





UNLESS OTHERWISE EXPRESSLY STATED IN THESE SALE TERMS AND CONDITIONS OR ANY OTHER WRITTEN AGREEMENT BETWEEN THE PARTIES RELATING TO THE SALE OF ANGUS CATTLE UNDER THESE SALE TERMS AND CONDITIONS, SELLER MAKES NO OTHER WARRANTIES, EXPRESS OR IMPLIED, INCLUDING ANY IMPLIED WARRANTY OF MERCHANTABILITY OR FITNESS FOR A PARTICULAR PURPOSE, EVEN IF SUCH PURPOSE IS KNOWN TO THE PARTIES.

THE REMEDIES PROVIDED IN THESE SALE TERMS AND CONDITIONS ARE THE EXCLUSIVE REMEDIES OF THE BUYER, OR ANY PARTY CLAIMING THROUGH THE BUYER, AND UNDER NO CIRCUMSTANCES WILL THE SELLER BE LIABLE FOR ANY INCIDENTAL, INDIRECT, SPECIAL, CONSEQUENTIAL, PUNITIVE OR EXEMPLARY DAMAGES UNDER ANY INDEMNITY PROVISION OR OTHERWISE.

## TERMS OF SALE

### Bidding

1. Each animal will be sold to the highest bidder. The person in charge will settle any disputes as to bids, and his decision on such matters will be final.

### Announcements

1. If there is any inconsistency in the terms of any sale book, supplement sheet or day-of-sale announcement, (i) the day-of-sale announcement will control over both the supplement sheet and the sale book, and (ii) the supplement sheet will control over the sale book.

### Cash Sale

1. All sales are for cash unless satisfactory credit arrangements, including any possible reservation of security interest by the vendor, have been made with the vendor prior to sale.

### Buyer's risk

1. The risk of loss and injury of each animal passes to the buyer as soon as it is sold; but it is the obligation of the seller to ensure that animals are fed and cared for free of charge to the buyer until loaded for shipment or until the expiration of 48 hours after the sale, whichever occurs sooner.

### Identification

1. The seller must ensure that each animal has a readable permanent identification mark (e.g., tattoo, hot-iron brand or freeze brand) corresponding to its registration.
2. The buyer must check all permanent identification marks for accuracy.
3. In those cases where a nickname is used by the seller, the nickname must also be accompanied by the official registered name and number of the animal.

### Certificate of registration

1. A transferred certificate of registration must be furnished by the seller free of charge to the buyer for each animal within 45 days following the later of the date of sale and receipt of full payment.

### Artificial insemination (AI) service certificates

1. Upon the buyer's request, AI Service Certificates must be furnished by the seller free of charge to the buyer for all females bred artificially to bulls not owned by the seller.

## GUARANTEES

### Health

1. Unless otherwise announced, the seller guarantees that all animals are eligible for interstate shipment as required by federal regulations.

### Conformance with registration

1. The seller guarantees that all animals are registered under the rules of the American Angus Association.
2. The seller guarantees to the buyer that all animals conform to the registration certificate as entered in the Herd Book of the American Angus Association.

### Pedigree

1. The seller guarantees to the buyer that the pedigree and performance data of all animals, as represented in any sales materials (including any sale book, supplement sheet or day-of-sale announcement), is accurate.
2. In those cases where a commonly understood nickname is used by the seller, the seller guarantees the pedigree of the animal based on the commonly understood nickname.

### Sex

1. Unless otherwise represented by the seller, there are no guarantees that offspring will be of a particular sex.

### Breeding guarantees

1. The seller guarantees that all bulls are breeders, but only if such bulls are at least 12 months old at the time of sale and have not been allowed to run with the herd until at least 14 months of age. A bull that settles a cow by natural service and passes a fertility test made by competent veterinarians mutually agreed upon by the buyer and the seller, during any six-month period of trial (provided for in paragraph 2 of the section entitled "Options and privileges of return or adjustment") will be considered a breeder. Unless otherwise agreed by the buyer and the seller, the seller makes no guarantees with respect to the ability to freeze semen.
2. The seller guarantees that all females are breeders, with the exception of: (a) calves under 12 months of age at the time of the sale; (b) animals shown after the sale has occurred (in such cases, the breeding guarantees, if any, will be those guarantees as are agreed upon between the seller and the buyer); (c) injury or disease occurring after the sale; and (d) gross negligence or willful misconduct on the part of the buyer.
3. "Safe-in-calf" females are guaranteed by the seller to have been examined by a competent veterinarian and determined to be in calf.
4. "Served" females are not guaranteed to be in calf.
5. "Pasture-bred" females have been exposed but are not guaranteed to be in calf.
6. "Open" females have not been served and are guaranteed by the seller to be without calf.
7. Donor females:
  - a. Unless otherwise agreed by the buyer and the seller, a female that has been used in an embryo transfer program is not guaranteed to be a breeder after the date of the sale.
  - b. Unless otherwise agreed by the buyer and the seller, a female is not guaranteed to be a breeder after the date of the sale, when that female is to be used, or attempted to be used, in an embryo transfer program.
8. The seller makes the following guarantees with respect to all "pregnant recipients": (i) that the female is pregnant, (ii) that the resulting calf is of the pedigree represented, and (iii) that the resulting calf is of the sex represented (if so represented).

### Genetic defect guarantee

1. All animals are guaranteed by the seller not to produce a calf with the following defects for a period of two years after the date of sale: Dwarfism, Osteopetrosis (marble bone disease), Double Muscling, Syndactyly (mule foot) and Heterochromia Irides (White Eye).
2. The buyer must notify the seller in writing immediately upon the birth of a calf suspected of being defective or immediately after determination is made that such calf is defective.
3. The seller at his expense will be permitted, and provided with reasonable opportunity, to obtain DNA material of an alleged defective calf and its sire and dam for the purpose of DNA-marker analysis to establish parenthood.
4. The animals will be returned by the buyer to the seller at the buyer's expense (unless prohibited by the health requirements of the seller's state).
5. The return of the purchase price in connection with a defect-producing animal will be deemed full satisfaction and settlement.

6. The buyer and seller agree to fully and promptly comply with all rules of the American Angus Association relating to genetic defects.
7. If there is a dispute as to whether or not a calf is defective, the American Angus Association will make the final determination.
8. Registration certificates issued after January 30, 1979, for animals that, prior to issuance of the certificate, had been reported and verified as carriers of recessive genetic defects or genetic factor or had tested free of certain genetic defects or genetic factors contain the following codes relative to such defect.  
S - Syndactyly, H - Double muscling, D - Dwarfism, M - Osteopetrosis, HI - Heterochromia Irides, HG - Horn gene, R - Red, X - Multiple defects, check list for kind, F - Tested for defect printed without producing abnormal calves, GDF - Produced 35 or more calves from daughters without a genetic defect or genetic factor, WT - Wild Type Color Gene.

The absence of any such notation on a pedigree of an animal, in a sale book, does not establish that the animal in question is not a carrier of any such genetic defect or genetic factor.

### Semen

1. Unless otherwise agreed by the buyer and the seller, with respect to the sale of semen the seller makes no guarantees with respect to the performance or characteristics of such semen and buyer is purchasing such semen "as is."

### Embryos

Unless otherwise agreed by the buyer and the seller, with respect to the sale of embryos the seller makes no guarantees with respect to the performance or characteristics of such embryos and buyer is purchasing such embryos "as is."

### Options and privileges of return or adjustment

1. Except as provided in paragraphs 2 and 3 of this section, all claims for adjustment or refund must be made in writing on or before the later of (i) six months after the sale date and (ii) the date on which the animal reaches 30 months of age.
2. All claims relating to genetic defects will be handled in accordance with the section "Genetic defect guarantee."
3. All claims relating to the misrepresentation of service sire and all claims relating to paragraphs 10 and 11 of this section must be made in writing on or before the second anniversary of the date of sale.
4. If an animal is claimed to be a non-breeder, the animal may be returned to the seller if in good condition and complying with the health requirements of the seller's state. The seller is entitled to six months trial following the return of the animal in which to prove that the animal is a breeder. If at the end of the six-month period the seller is unable to prove the animal is a breeder, the seller must, at the option of the buyer, replace the animal with another of equal value or refund the purchase price. The return of the full purchase price will be deemed full satisfaction and settlement. Any expense incurred for transporting an animal claimed to be a non-breeder will be the responsibility of the buyer, except that the seller will be responsible for transportation costs in excess of the distance between the buyer's farm and the location where the sale took place. If the seller proves the animal to be a breeder, it will be the obligation of the buyer to take delivery of the animal and pay all transportation expenses.
5. If a female sold as "safe in calf" proves not to be in calf, the buyer may receive service from the bull previously used, if available. If the bull is not available, the seller must make a satisfactory adjustment on the purchase price to the buyer or, at the buyer's option, refund the purchase price upon return of the animal to the farm of the seller. Any adjustment provided for in this paragraph 6 will absolve the seller from further liability, except in if such female proves to be a non-breeder. If a female represented as "safe in calf" to a certain bull at the time of sale proves to have been bred to a different bull, the seller must make a satisfactory adjustment on the purchase price to the buyer or, at the buyer's option, refund the purchase price upon return of the animal to the farm of the seller (adjustments will not be considered to be a breeding fee or an allocation of the purchase price to any unborn calf).
6. If a female sold as "open" proves to be with calf, the buyer may return the animal to the farm of the seller prior to calving for a refund of the full purchase price or for another animal of equal value, whichever is acceptable to the buyer. The Seller is responsible for all transportation expenses.
7. Cows with calves at their side are presumed to be breeders with no further fertility guarantee.
8. White skin or hair must not be painted or altered. If such painting or alteration has occurred, the buyer may return the animal to the farm of the seller for a refund of the full purchase price or for another animal of equal value, whichever is acceptable to the buyer.
9. If an animal (including the offspring of a pregnant recipient) is sold and at a later date proves not to have been eligible for registration under the rules of the American Angus Association, the seller must make a satisfactory adjustment on the purchase price to the buyer, or at the option of the buyer, refund the purchase price upon the return of the animal to the farm of the seller.
10. If (i) an animal is sold (including the offspring of a pregnant recipient) and through DNA-marker-typing is proven to have incorrect parentage, as represented by the certificate of registration, and for which parentage can be determined, or (ii) the resulting calf of a pregnant recipient is not of the sex represented, the seller is obligated to make a satisfactory adjustment on the purchase price to the buyer or, at the buyer's option, refund the purchase price upon the return of the animal to the farm of the seller.
11. Except as provided in paragraphs 4 and 6 of this section, all transportation expenses incurred will be the responsibility of the buyer, except that the seller will be responsible for transportation costs in excess of the distance between the buyer's farm and the location where the sale took place.

### Retention of genetic material

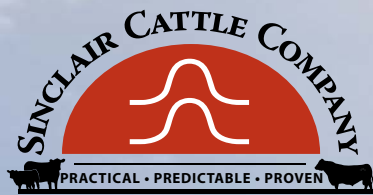
1. Unless otherwise agreed in writing by the seller and the buyer, the seller will not retain any genetic material of any animal (including embryos and semen) for the purpose of cloning.

### Miscellaneous

1. The above terms and conditions of sale constitute a contract between the buyer and the seller of each animal and are equally binding upon both parties. Each sale or resale of an animal constitutes a separate transaction.
2. Neither the sponsor or sponsors, the sale manager, nor any other person connected with the management of the sale, assumes any liability, legal or otherwise.
3. These sale terms and conditions and all rights, obligations and duties arising hereunder and all disputes arising hereunder will be construed in accordance with, and governed by, the laws of the state in which the sale of the animal or animals occurs, without giving effect to such state's choice of law rules.

\* For voluntary consideration and use by sellers in their independent business judgment.





[www.sinclaircattle.com](http://www.sinclaircattle.com)

PO Box 1158  
Buffalo, WY 82834

## PRODUCTION SALE

**MARCH 23, 2019**

for more information call

1-800-761-2077 • (307) 254-1477

or email [sinclaircattle@gmail.com](mailto:sinclaircattle@gmail.com)

**GOD BLESS AMERICA**



**THANK YOU TO ALL  
OF OUR TROOPS**

