

# AMES, IOWA

*Smart Choice*

Dan Culhane, President & CEO  
Ames Chamber of Commerce  
Ames Economic Development Commission

February 23, 2018



# Today's Agenda

- ISU Research Park
- Prairie View Industrial Center
- Ames Municipal Airport Modernization
- Miscellaneous Mentions

# ISU Research Park





# ISU Research Park

- Activity at the Park remains high
- Multiple inquiries for space and sites
- 2018 will likely see new projects/expansion
- Merck continues to invest in the Park
- Iowa companies continue to expand here
  - TMC Trucking
  - Sukup Manufacturing
  - Others on the way...

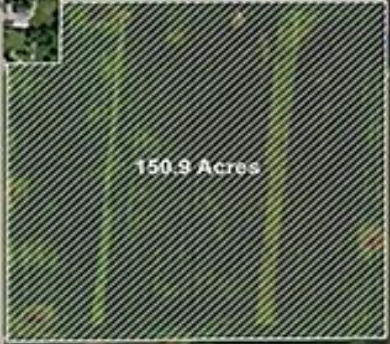


# Prairie View Industrial Center

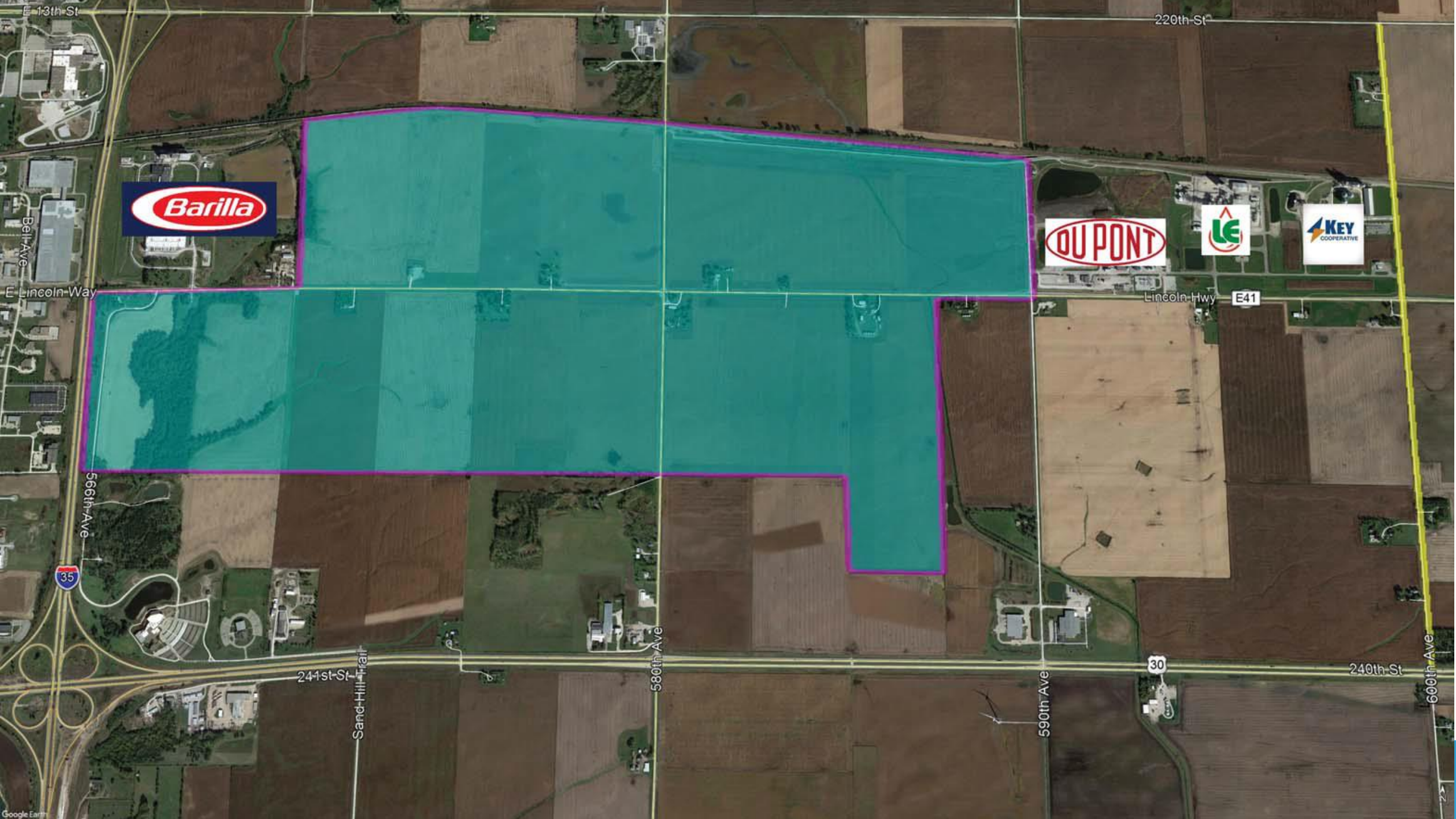
- Lincoln Way corridor from Barilla to DuPont
- 1300 + acres – bisected by Lincoln Way
- Numerous attributes
- Mainline Union Pacific Railroad Service/Access
- Proximity to I-35 & U.S. 30
- New natural gas pipeline – installed in 2015
- Sewer and Water provided by City of Ames – Summer 2018
- Electric provider – Alliant Energy



Prairie View Industrial  
Center - Ames, IA







E 13th St

220th St

Bell Ave

E Lincoln Way

Lincoln Hwy

E41

566th Ave

35

241st St

Sand Hill Trail

580th Ave

590th Ave

30

240th St

600th Ave

# Prairie View Industrial Center

- 700+ acres currently under option
- Sale prices \$25,000 per acre
- Funded by Alliant Energy – land options and site analysis
- Site Certification has begun – reduces approval process time
- Prospect activity highly robust – 3 project responses in last 10 day representing Prairie View
- Out of state prospect in town most of yesterday – focused on Prairie View



# Prairie View Industrial Center

- Gives Ames the ability to compete for large industrial users
- Enhances opportunity for ISU technologies to commercialize here in Ames rather than someplace else
- Lincoln Way Energy invested in rail siding – critical to many
- Prepares us for a wide array of projects
- Ames is a regional workforce center – this is logical

# Ames Municipal Airport Terminal





# Ames Municipal Airport Terminal

Terminal Building - Perspective View from Apron

*Design Development*  
*Ames Municipal Airport New Executive Terminal*



Comm. No. 2015090 20 November 2015

BOLTON & MENK, INC. ALLIANCE

*Smart Choice*

# Ames Municipal Airport Terminal

- 6,000 square feet
- Generous lounge area
- FBO offices and support staff office space
- Kitchen
- Gracious conference room – airside
- Large training room – parking lot side
- Private area for visiting pilots
- New front door to the Ames/Story County community



# Ames Municipal Airport

- New day for the Ames Municipal Airport
- Central Iowa Air Service – new Fixed Base Operator
- Customer service has improved immensely
- Fuel sales are up 100%
- Average of 12-15 aircraft per day – significant increase
- Evolved into an incredible asset

# Miscellaneous Mentions

- Ames continues to flourish!
- No secret – we need more housing – all types – retain young people wanting to work for our companies
- We also need more people = more workers – all levels
- We need more amenities – heard frequently by all ages
- We need the Ames and Gilbert school bond issues to pass!
- Campustown will continue to see investment
- Downtown will see investment and redevelopment – mixed use
- AEDC working outside of Ames too – more than ever - projects



# Contact



*Smart Choice*

304 Main Street - Ames, IA 50010

(515) 232-2310

[dan@ameschamber.com](mailto:dan@ameschamber.com)

[www.ameschamber.com](http://www.ameschamber.com) & [www.amesedc.com](http://www.amesedc.com)