



HEBE HAVEN YACHT CLUB
24 HOUR CHARITY DINGHY RACE 2017
21st October – 22nd October 2017

SAILING INSTRUCTIONS

1. VENUE

The race shall be held in Pak Sha Wan Bay, immediately in front of HHYC.

2. RULES

2.1 This series shall be governed by the rules as defined in The Racing Rules of Sailing (RRS) 2017-2020, including rules pertaining to the hours of darkness, together with:

- the Prescriptions of the Hong Kong Sailing Federation (HKSF);
- Class Rules where they apply;
- 24 Hour Race Dock and Safety Rules;
- the 24 Hour Charity Dinghy Race 2017 Notice of Race, and;
- these Sailing Instructions.

Succeeding items in the above list will take precedence.

2.2 Part 2 of the RRS shall also apply during hours of darkness.

3. CHANGES TO SAILING INSTRUCTIONS

Any change to these Sailing Instructions will be posted on the official notice board. The IC flag L will be displayed from the waterfront flagstaff to indicate if a Notice to Competitors is in effect during the race, or on the Club's official notice boards and website prior to the race.

4. RACE NUMBERS AND DECALS

4.1 Each boat shall display a number (supplied) on both port and starboard sides. The same number (supplied) shall appear on the mainsail of the boat.

4.2 Sponsors decals may be displayed on hulls and sails, but must not obscure the boat numbers.

5. CLASSES (this changes Notice of Race section 4.1)

5.1 The Event will comprise dinghies in the following classes:

Laser Bahia
Laser Pico
RS Feva
RS Quest
Hansa Liberty
Access 303

5.2 The class flag for all boats shall be the IC flag W.



6. SCHEDULE

Date	Time	
Thursday, 12 October 2017	19:00	Captain's Briefing
Saturday, 21 October 2017	10:00-13:30	Team & Crew Registration
	11:30	Team Leader's Briefing
	13:55	Warning signal
Sunday, 21 October 2017	14:00	Finishing Signal
	ASAP after racing	Prize Giving

7. COURSES

- 7.1 The course to be sailed will be displayed on the notice board. A sketch of the course to be sailed is to be found in Appendix A of these Sailing Instructions. All marks are to be rounded to starboard.
- 7.2 The course will be:
- Starting Line - between the Committee Boat and a Mark laid in the vicinity of the Stop-Go Penalty Area. This mark will be removed soon after the start.
- Mark 1 - laid opposite the Lap Counting Boat at the end of the pontoon.
- Mark 2 – if laid, it will be close to the red channel marker.
- Mark 3 - laid near the southern end of the main fairway.
- Mark 4 - laid approximately 200m due east of the end of the Pak Sha Wan Public Pier.
- Mark 5 - laid due west of Mark 1.
- Finishing Line – between the Lap Counting Boat and Mark 1.
- Following the start the Committee Boat is replaced by Mark 5.
- 7.3 ALL BOATS MUST PASS BETWEEN THE LAP COUNTING BOAT AND MARK 1 (THE FINISHING LINE) ON EVERY LAP. ANY BOAT NOT PASSING THROUGH THE FINISHING LINE WILL NOT BE RECORDED AS COMPLETING A LAP.
- 7.4 A lap will not be recorded for a boat that has been towed back to the dock.

8. MARKS

All buoys will be of the large yellow cylindrical type with the possible exception of Mark 2, which may not be laid. In this case the red channel marker shall be Mark 2. Marks will be illuminated during hours of darkness. Failure of the said illumination shall not be deemed a contravention of these Sailing Instructions.

9. STARTING LINE

The starting line shall be between a flag staff displaying an orange flag on the HHYC Committee Boat and an Outer Distance Mark laid in the vicinity of the Stop-Go Penalty Area.



10. THE START

The race will be started in accordance with RRS 26. The class flag for all boats shall be the IC flag W. The warning signal will be made at 13:55 on Saturday, 21st October 2017.

11. THE FINISH

The finish of the event will be determined by a sound signal from either the committee boat or from ashore. Boats shall complete the lap that they are sailing, by passing between the Lap Counting Boat and Mark 1. A boat's finish time will be recorded the first time that it passes through the finishing line after 14:00 on Sunday, 22nd October 2017.

12. DECLARATIONS

- 12.1 Boats that finish the event shall be presumed to have observed all Rules and Sailing Instructions and it shall not be necessary to sign a declaration.
- 12.2 Boats retiring from the event shall, within 30 minutes, advise the Race Officer that they have retired.
- 12.3 Team leaders shall sign acceptance of completed laps by their boats at 21:00, 03:00, 09:00 and 14:00 hrs during the event at the Race Office. Teams should sign off on their laps within 30 minutes of the sheets being made available. Failure to sign off within the 30 minutes period will be taken that the results are accepted.
- 12.4 Every attempt will be made to display the results on electronic displays. This is for information purposes only and the official lap counters records will take precedence over those on the display, in the event of a discrepancy between the two.

13. PENALTIES & PROTESTS

- 13.1 Penalties and protests shall be governed in accordance with Appendix B of these Sailing Instructions.
- 13.2 Race Marshals will be on duty around the race course and are authorised by the Race Committee to issue warnings and penalties to competitors during the Race.

14. BOATS SUPPLIED BY THE ORGANISERS

- 14.1 Other than items of personal safety equipment, crews are prohibited from adding or removing any equipment from the boats supplied for this event, in particular equipment intended to enhance the performance of the boats or crews.
- 14.2 Adjustments to the standing rigging of the Laser Bahia, Access 303, RS Quest and RS Feva are permitted. No additional gear can be fitted other than wind angle indicator.
- 14.3 No redress will be given to boats suffering equipment failure during the race. All crews starting are deemed to have inspected their boats at the time of registration. Should crews consider that their allotted boat requires repairs or parts replaced prior to the start of the race, they must arrange this with the Race Office

15. REPAIRS AFLOAT AND ASHORE

Repairs to boats will be allowed during the course of the event at designated areas only. These will either be alongside the outer pontoon, or ashore on the hard standing. Boats re-entering the race after repairs, either from ashore or afloat must do so from the changeover pontoon. Crew must inform the Race Office both when coming ashore and re-joining the race. Note that there are limited spares available.



16. CREW CHANGES

- 16.1. Crew change-over may only take place in the designated area alongside the outer, southern most pontoon. If, in the estimation of a Race Marshal, actions other than those associated with crew changes, such as repairs or emptying excessive water from the boat, occur within the designated area, a penalty may be imposed by the Race Marshal.
- 16.2 No boat may push their way into the changeover position and must not hinder any racing boat leaving after changeover. **The boat having completed the changeover has right of way.**
- 16.3 Only the relieved crew or sailing crew is permitted to 'push-start' a boat leaving the change-over dock. The crew ashore may only make one step in the pushing process.

17. PERSONAL BUOYANCY / ILLUMINATION

Personal buoyancy, to the satisfaction of the organizers, shall be worn at all times when on the water. Wet suits and dry suits are not considered adequate personal buoyancy. Competitors are strongly advised to carry some form of waterproof torch or personal strobe whilst sailing through the hours of darkness, and a whistle at all times.

18. NAVIGATION LIGHTS

Each boat will be supplied with a set of navigation lights when they register. During the hours of darkness a boat must return to the changeover dock at the completion of a lap should the navigation lights fail. A boat shall have all three (3) navigation lights working when leaving the changeover dock. Failure to comply with these regulations shall not be subject to protest by other competitors, but shall be dealt with on a case by case basis by the Race Committee.

19. TEMPORARY SUSPENSION OF RACING

- 19.1 In the event that the Race Committee deems the weather conditions unsuitable for racing to continue or start, a temporary suspension will be announced by the sounding of two (2) sound signals accompanied by display of the AP together with IC flag F from the HHYC waterfront flagstaff. Rescue craft will, if possible, also inform competitors of the temporary suspension of racing. Competitors shall complete the lap currently being sailed and proceed ashore immediately thereafter.
- 19.2 The IC flag F will be removed accompanied by one sound signal 20 minutes prior to the removal of the AP. The re-start of the race will then be in accordance with the starting procedures outlined in these Sailing Instructions.
- 19.3 The intention to re-start will be signalled by removing the AP accompanied by one sound signal. One minute later the IC flag W will be displayed from the committee boat on station together with one sound signal, this will be the commencement of a normal starting sequence.

20. RADIO COMMUNICATION

Boats are permitted to make radio transmissions while racing and receive private radio broadcasts. However the radio equipment used shall not be a VHF radio transmitting on marine channels. Listening to public radio is permitted.

21. SPIRIT OF THE EVENT

Attention is drawn to Part 1 - Fundamental Rules of the World Sailing Racing Rules of Sailing (RRS). A prize will be awarded for the team that best embodies the Spirit of the Event.



22. SCORING

- 22.1 Scoring shall be based on factoring the boats Portsmouth Yardstick Number (PYN) by average lap time after deduction of any penalties. PYNs for this event will be posted by noon on Friday 20th October 2017.
- 22.2 PYNs may be modified by the Race Committee to suit the event.
- 22.3 The winner will be the boat with the lowest average corrected time. In the event that the first and second boats on lowest average corrected time are of the same dinghy class, the boat which has completed the most laps shall be the winner. This rule also applies to all other places.
- 22.4 PYNs for this event will be posted at time of registration on Friday morning.

23. PRIZES (this changes Notice of Race section 13)

- 23.1 Prizes will be awarded as follows:
- a. 1st Overall
 - b. Class Prizes: The number of prizes per Class will be subject to the number of boats entered as follows:

Number of Class entries	Number of prizes
3 - 4	2
Above 4	3

- c. Other prizes may be awarded at the discretion of the Race Committee.
- 23.2 Prizes will be awarded after racing on Sunday, 22nd October 2017.

24. CREW REGISTRATION

Only sailors whose names have been registered with the Race Committee may sail in the event. Changes of team members must be cleared with the Race Office. A crew shall not race for a team other than the one in which they are registered without the permission of the Race Committee.

25. CREW LIMIT / EQUIPMENT/ COMPETENCE

- LASER BAHIA** - Maximum of 4 and a minimum of 2 crew. No gennaker permitted.
- RS QUEST** - Maximum of 4 and a minimum of 2 crew. No gennaker permitted.
- LASER PICOS** - Maximum of 3 crew and a minimum of 1 crew.
- RS FEVA** - Maximum of 3 crew and a minimum of 2 crew.
- HANSA LIBERTY** - Maximum of 2 crew and a minimum of 1 crew.
- ACCESS 303** - 2 crew at all times.

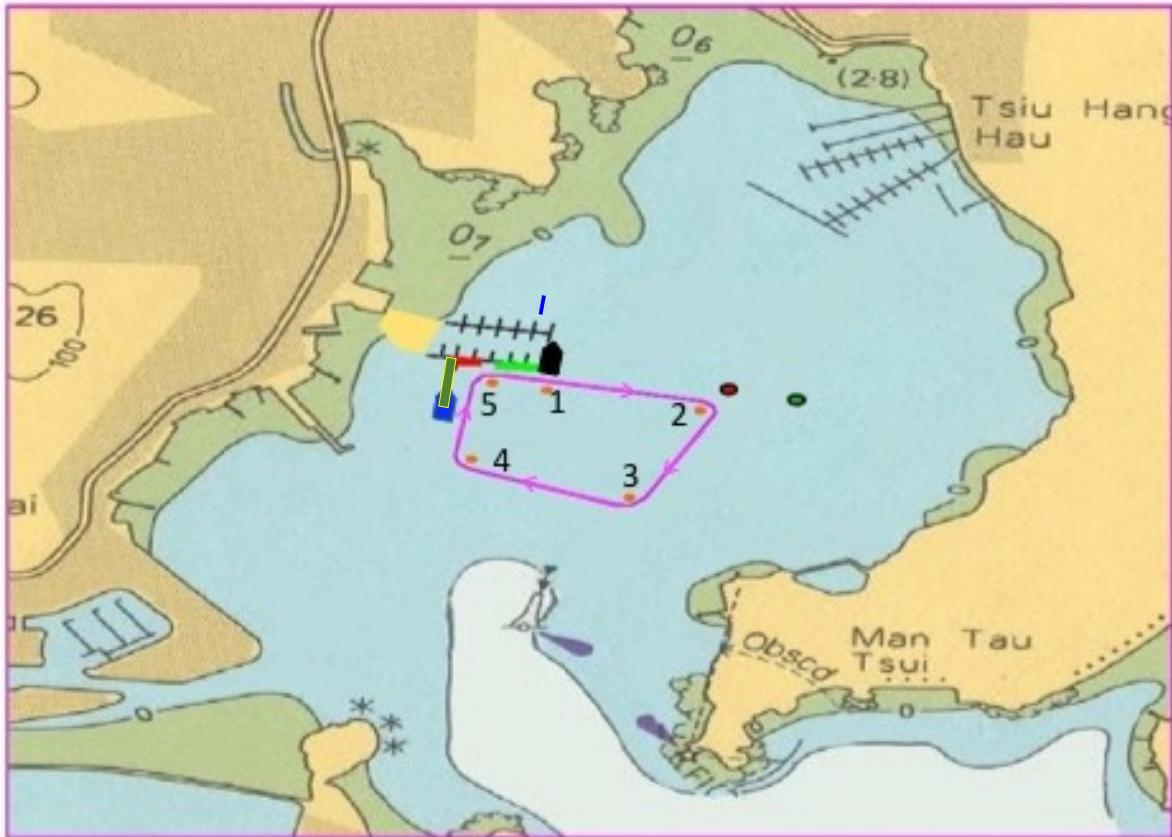
Team captains are responsible to ensure that all boats will have at least one crew member aboard with a level of sailing competency at least equivalent to HKSF Level 2. The race committee may at any time require evidence of competency and / or prohibit crews from sailing when it believes there is insufficient competency aboard. No gennaker/spinnaker or trapeze shall be used on any boats during the Event.



26. SAFETY

- 26.1 A fully staffed first aid post will be open for the duration of the event.
- 26.2 A minimum of four (4) rescue boats will be on duty at all times during the event. These boats will be equipped to handle emergencies and will have full radio contact between one another and the shore management, who will summon further help if required. Rescue boats will fly a red Club burgee,
- 26.3 It is a requirement that every competitor participating in events on the water shall be able to swim.

Appendix A



- | | | | |
|---|-------------------|---|--------------------------|
|  | = Committee Boat |  | = Lap Counting Boat |
|  | = Changeover dock |  | = Stop - Go Penalty Area |
|  | = Starting Line |  | = Starting Buoy |

The position of marks on this chart is for indication only.

Competitors should note that HHYC has taken every opportunity to remove moored boats from the likely course that boats will take. Whilst it is not prohibited to sail between the moored boats, competitors are **STRONGLY** advised to stay in the cleared channels to avoid any possible collisions with moored craft.

Whilst some boats have been removed from the course, the mooring buoys remain on the course. These buoys may be lit during the hours of darkness. Failure to light mooring buoys or racing marks will not be the subject of any form of redress.



APPENDIX B

PENALTIES and PROTESTS

This penalty system modifies RRS 31, RRS 44 and RRS 64.1(a).

B1. Self - Exoneration

A boat that, while *racing*, may have broken a rule of Part 2 or rule 31 (except rule 14 when she has caused damage or injury) may take a One-Turn Penalty under rule 44.

B2. Penalties Initiated By Race Marshals

a) Race Marshals may be on the water or dock observing at any time. Craft carrying Race Marshals will fly a yellow streamer / flag by day, and will also carry a spotlight by night. Race Marshals may have close personal ties with competitors; this will not disqualify them from carrying out their voluntary role as Race Marshals.

b) When a boat:

- i) breaks Rule 31 and does not take a one-turn penalty (see B1 above),
- ii) gains an advantage despite taking a penalty,
- iii) breaks a rule under Section 16 of these SI,
- iv) breaks Rule 42,
- v) breaks Rule 2, or
- vi) fails to comply with rule 44 for a breach of a Part 2 rule, when required by a Race Marshal,

A Race Marshal may penalize her without a *protest* by another boat. The Race Marshal will verbally identify her sail number and may verbally impose a penalty of one or more turns, or penalize her with a 'stop/go' penalty, or report the incident to the protest committee for further action.

c) If the Race Marshals decide that a boat may have broken a *rule* other than those listed in rules B2(b) they will inform the protest committee for action under rule 60.3.

B3. Stop / Go Penalties

a) A boat shall perform a 'stop/go' penalty as follows:

- i) The boat shall come to a complete stop alongside the Stop / Go penalty area of the pontoon, for 20 seconds as determined by the Dock Master.
- ii) A boat shall not make more than one 'stop/go' penalty at a time.
- iii) No crew changeover is permitted during a 'stop/go' penalty.

b) If a 'stop/go' penalty is imposed by the Race Marshals, but not performed, the offending boat will have one lap deducted from its score.

B4. Fairway Control Measures

While a large power driven vessel (other than any 24 Hour Race Official's vessel), which can navigate only within the Main Fairway, is operating inside the Main Fairway between Mark 2 and Mark 3;

- a) sailors are reminded to at all times observe IRPCAS rule 9 - Narrow Channels,
- b) when signalled, a corridor, twice the width of that of the vessel, extending ahead of that vessel's stern shall become a **Temporary Prohibited Area (TPA)**. **Safety Boats shall display a flag and / or make repeated sound signals advising that rule B4.b is in effect.**
- c) When deemed necessary, a Safety Boat may move a boat from the fairway (by towing her) to a safe position.
- d) In the event of boats being found in a prohibited area or refusing a tow, only the Race Marshals will be able to protest offending boats. This changes RRS 61.1 (a).

Since the fairway is often used by non-competitors and non-sailors, breaches of rule B4 may 'bring the sport into disrepute'. In which case such a breach may be considered a gross misconduct and be handled under rule 69.

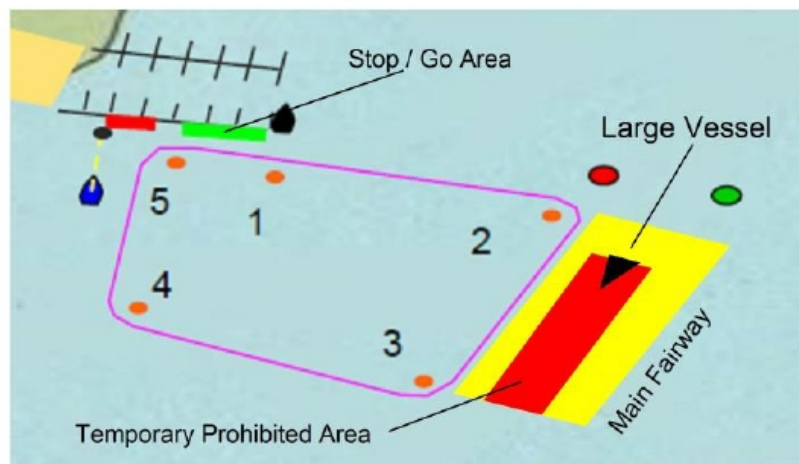


Diagram showing position of Main Fairway with example TPA (rule B4), and Stop / Go Area (rule B3)

B5. Protests

- a) Protests must be lodged with the Dock Master within 30 minutes of the protesting crew coming ashore. Protest Forms may be obtained from the Race Office. A protested boat may choose to exonerate herself as described in B3 of this appendix before going to protest. A penalty must be taken within two (2) hours of being informed of the protest against her. This modifies RRS 44.2.
- b) When the protest committee decides that a boat that is a party to a protest hearing has broken a rule, it shall penalise that boat at a minimum of a deduction of one lap, but in a means which is fairest for all boats and in the spirit of the 24 Hour Charity Race. This may be, but is not limited to disqualification, a deduction of more laps or some other penalty less than disqualification.
- c) When at all possible, protests shall be heard during the event. A HK\$500 protest fee will be charged. This will either be returned if the protest is upheld, or will be donated to charity if the protest is dismissed.