

Phoumieng is
36 kms west of
Luang Prabang



Big loop in the Mekong
river -- highlighted in
blue on the next Google
Earth map.



Phoumieng village 19° 52' 58" N 101° 52' 11.6" E

The big loop in the Mekong (in blue)



Luang Prabang (ferry) to Pak Long: 12 km

Pak Long to Houy Thak: 16 km

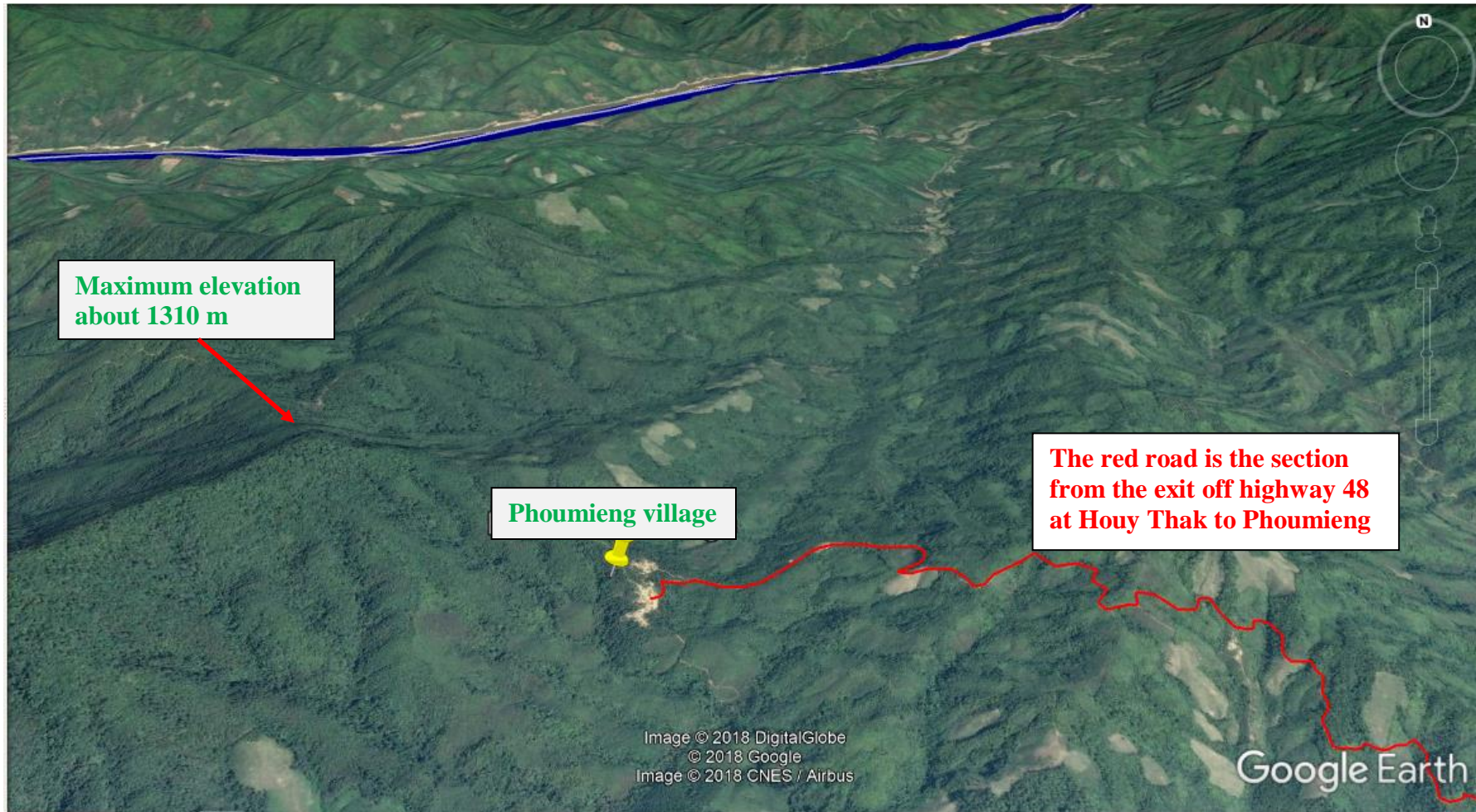
Houy Thak to Phoumieng village: 8 km

About 36 km total

Mekong river elevation at ferry: 275 m

Slightly tilted view

Upper portion of Mekong river loop (in blue)



Mountain maximum elevation about 1310 m

Lower village elevation about 720 m

Upper village elevation about 740 m

Mekong river elevation at Luang Prabang ferry: 275 m

Tilted view

Maximum elevation about
1310 m along ridge to the left.

Phoumieng village

The red road is the section
from the exit off highway 48

Image © 2018 DigitalGlobe
Image © 2018 CNES / Airbus
© 2018 Google
Image Landsat / Copernicus

Google Earth

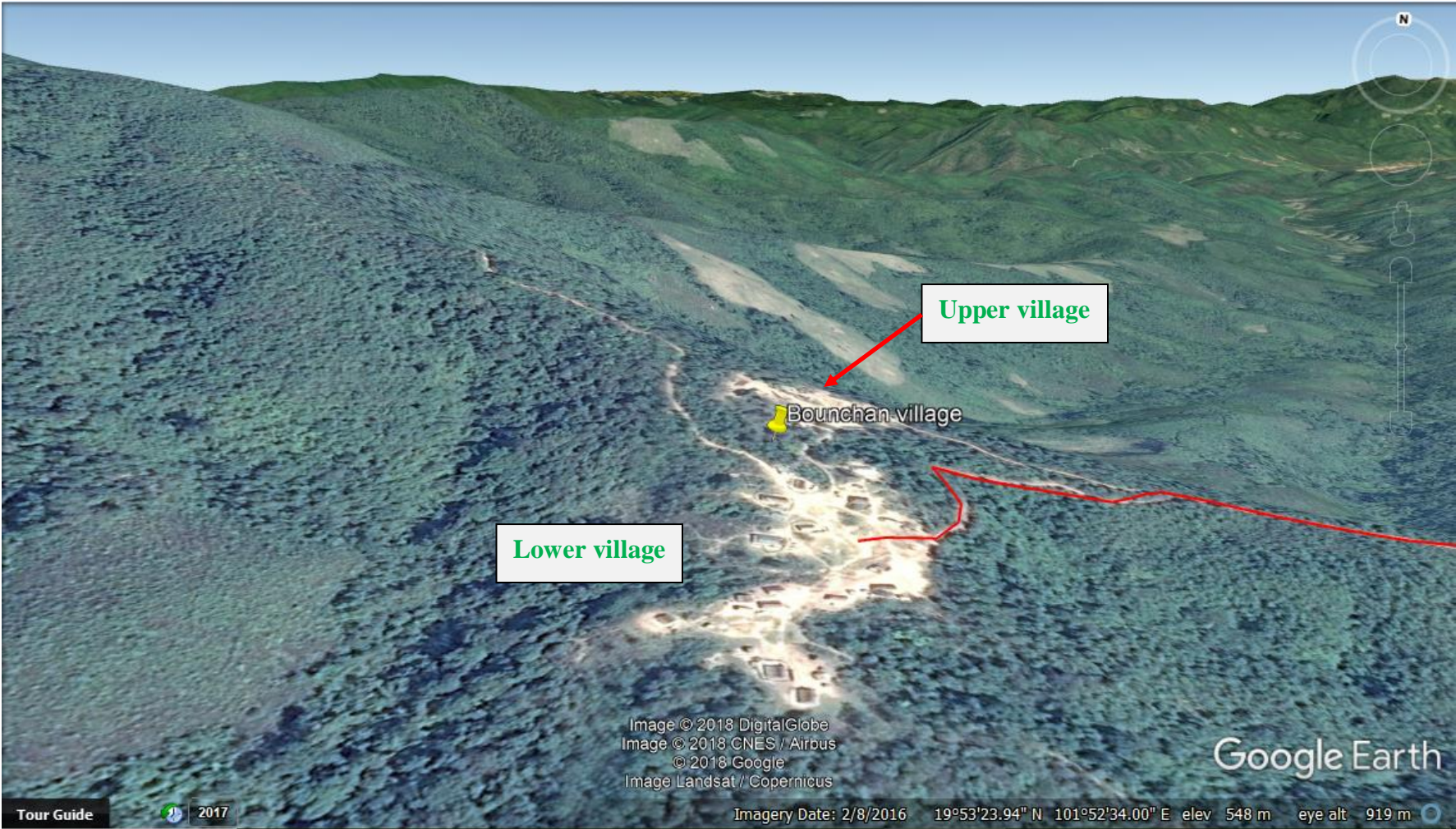
Tour Guide



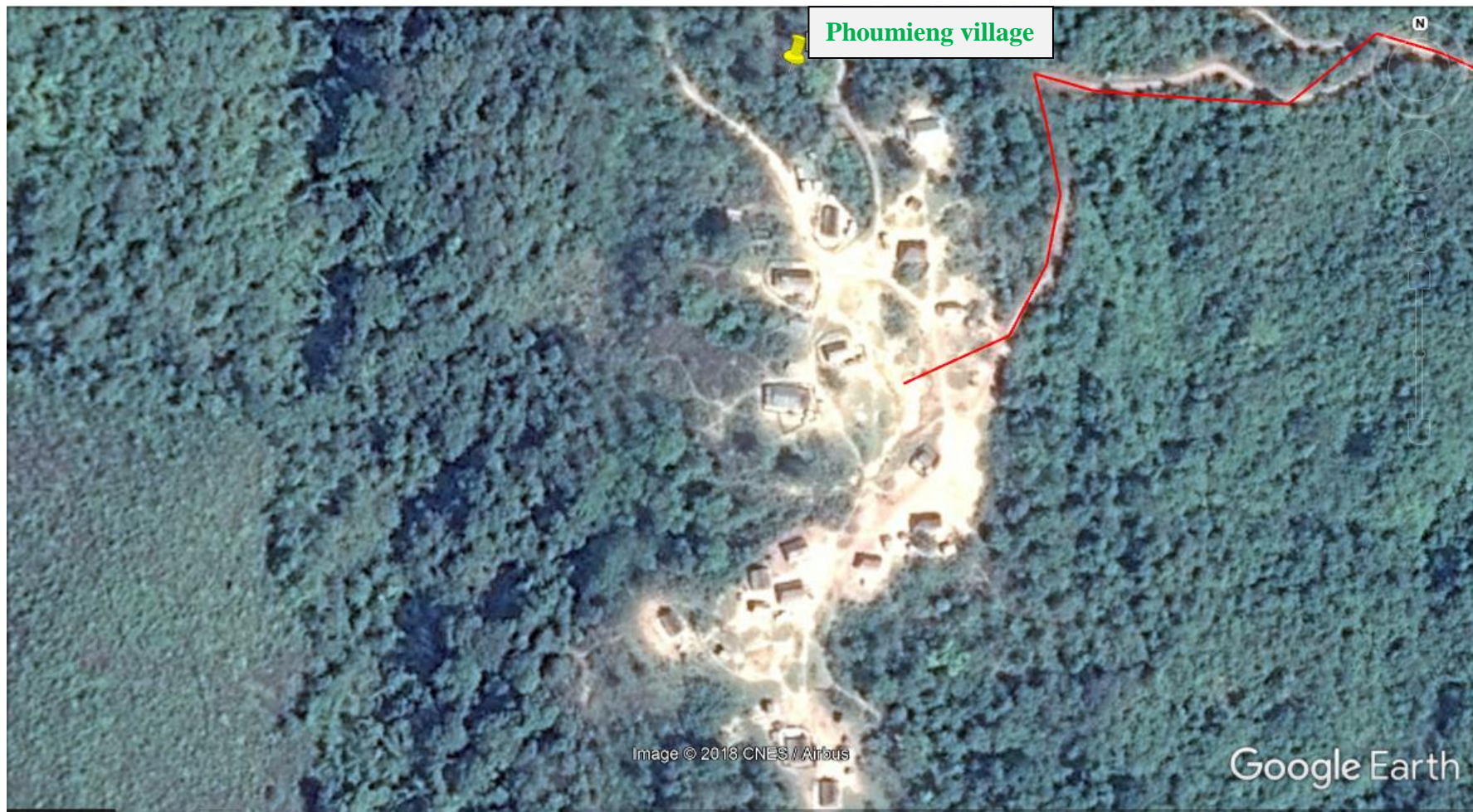
2013

Imagery Date: 2/8/2016 19°52'48.98" N 101°52'22.03" E elev 676 m eye alt 919 m

Tilted view

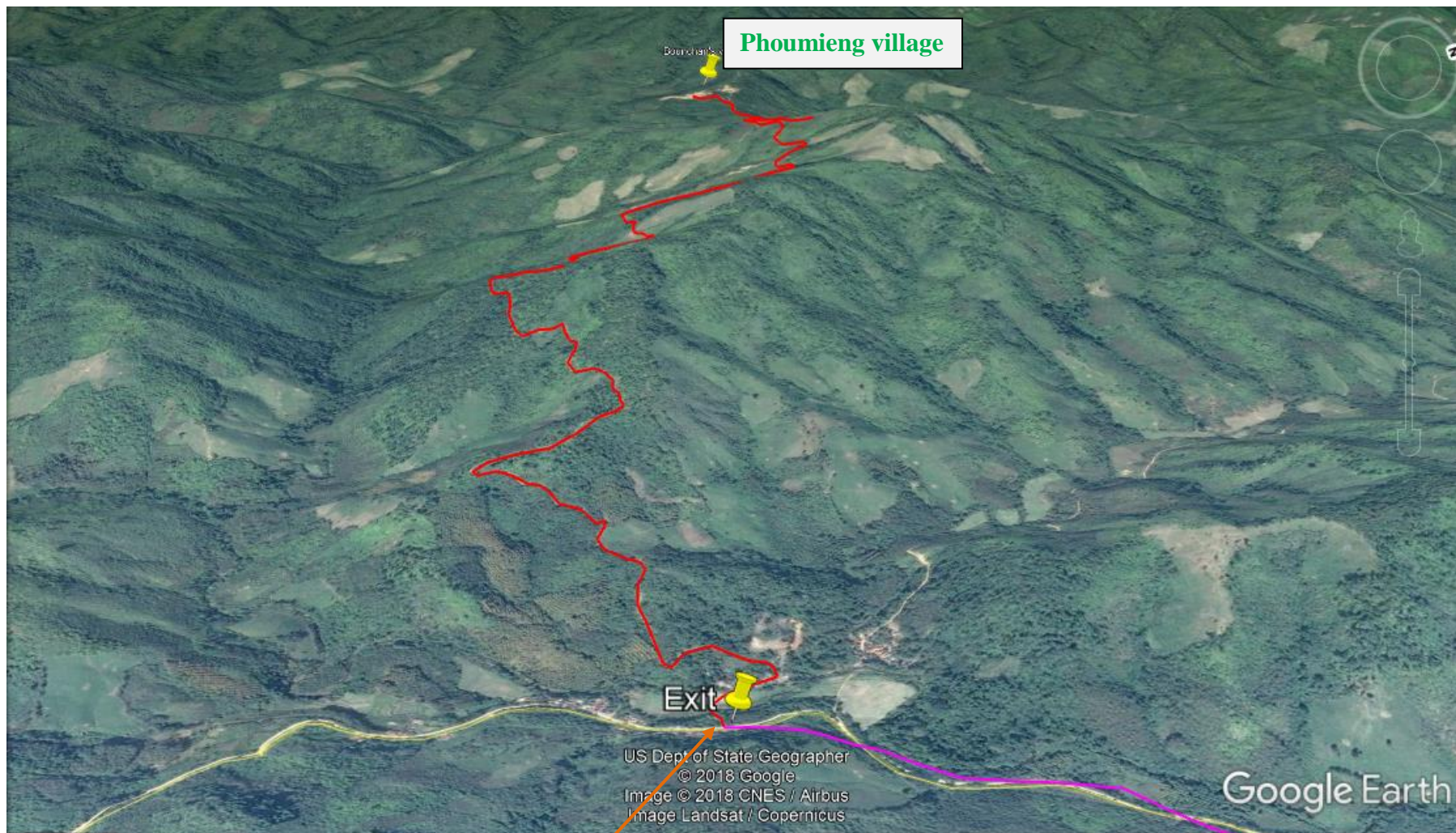


The lower village



The upper village





Phoumieng village

Exit

Houy Thak

US Dept of State Geographer
© 2018 Google
Image © 2018 CNES / Airbus
Image Landsat / Copernicus

Google Earth



Houy Thak