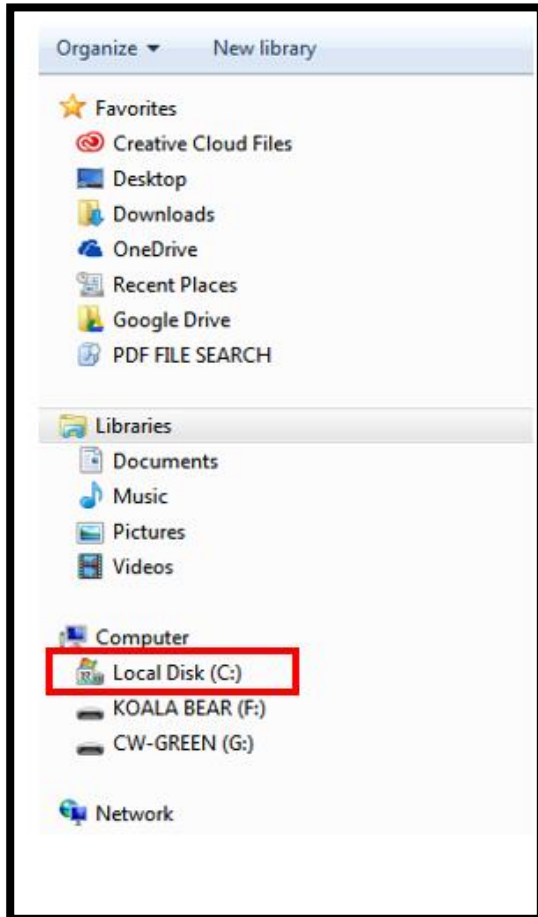


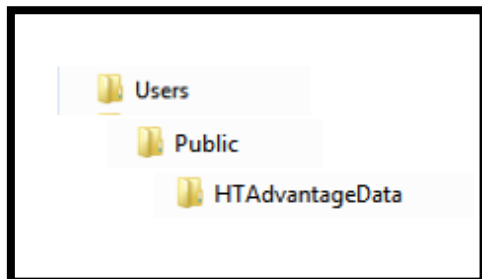
## IMPORTING ESTIMATES FROM ADV6 FROM ONE COMPUTER TO ANOTHER

From the old computer, locate your estimate files using the steps below

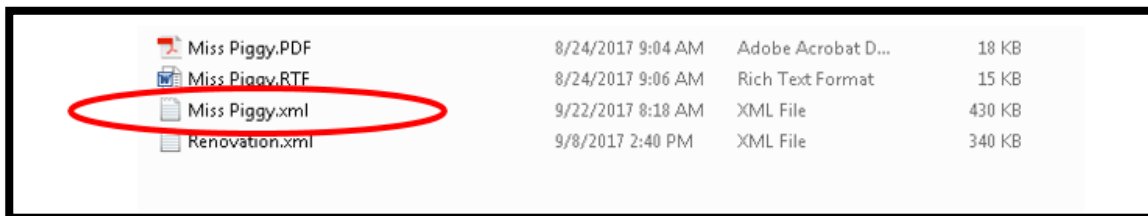
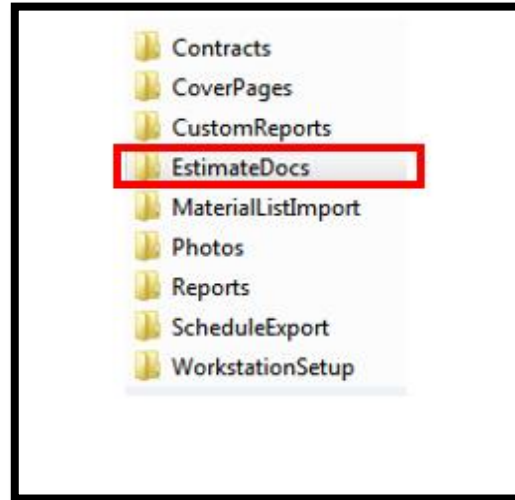
### 1. Locate your 'Local Disk ( C: )'



### 2. Next, follow the paths below



- 3. Open the 'EstimateDocs' folder and select the 'xml' file for the Estimate you want to transfer, right click on it and choose 'Copy'**

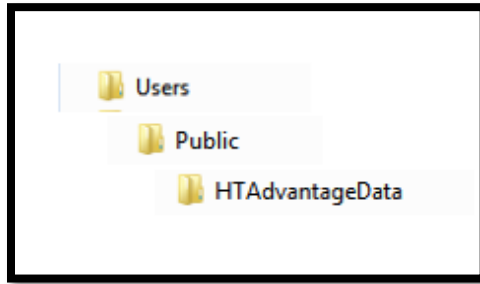


- 4. Once you have copied the Estimate, paste it to a Flash Drive, Google Drive, One Drive etc.... You want to be able to access the Estimate from another computer.**



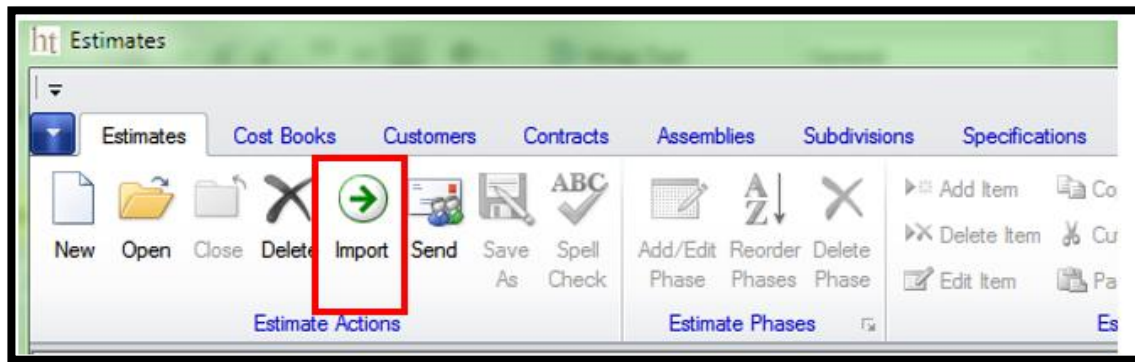
**Once copied and pasted, either plug the flash drive in to the new computer or from the new computer sign in to the location in which you pasted the 'xml' file.**

**Once you have located the 'xml' file right click on it and select 'copy' and follow the same path to the location of where it was located on the previous computer.**

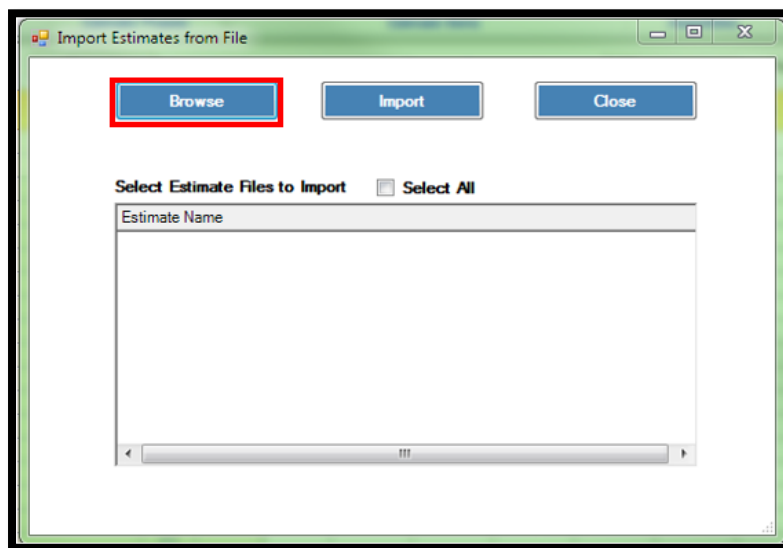


**Open the 'EstimateDocs' folder, right click and select 'Paste'**

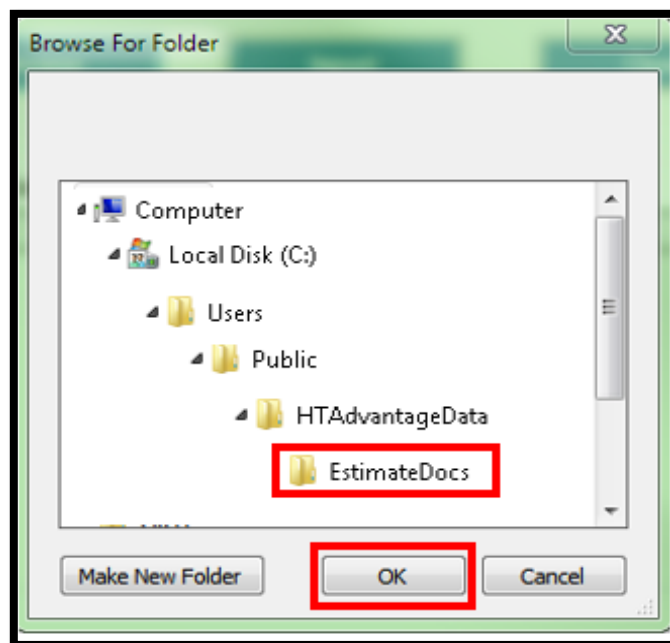
**On the new computer open the Advantage 6 program. From the estimate tab select the 'Import' option**



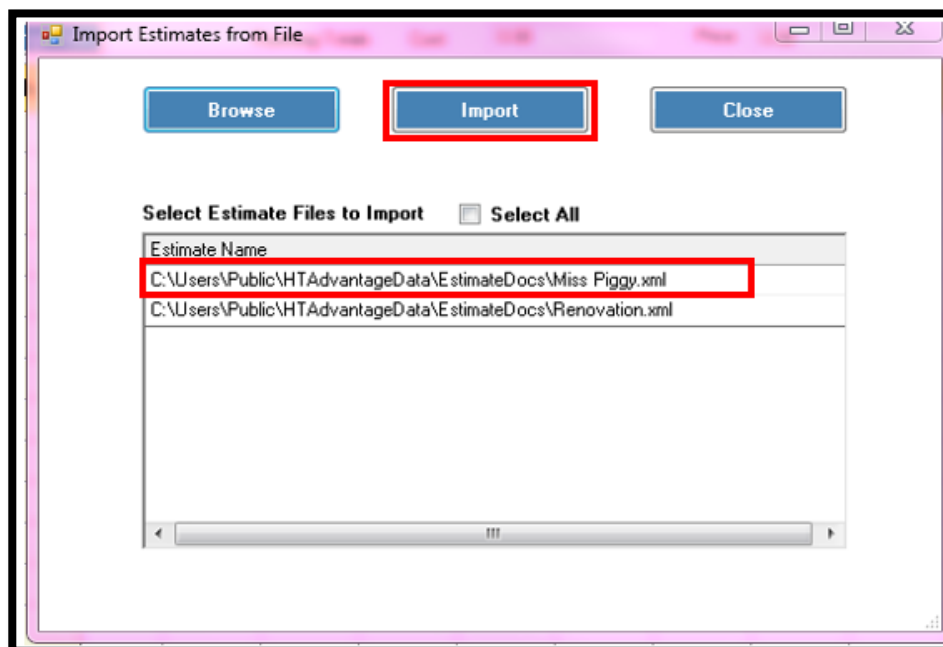
**An import window will appear, you will need to direct it to the 'xml' file location to import your estimate in to the program. Select 'Browse' to begin.**



**Locate path as shown below**



**Select the 'EstimateDocs' folder and click ok**



**Select the 'xml' file and click 'Import'**  
**Close the import window and select 'Open' in the 'Estimate tab'**