

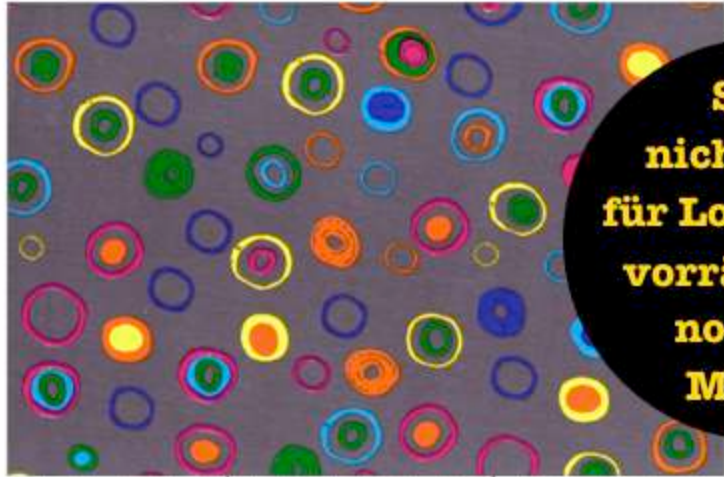
Dein Muster
+ Dein Style
+ Dein Maß

= Deine
Sixx-Zagg-Mütze

(handg'macht
z'Minga)



P 002: Bunte Kreise auf Grau



**Stoff
nicht mehr
für Longbeanie
vorrätig, nur
noch für
Mütze!**

95% Baumwolle / 5% Elasthan



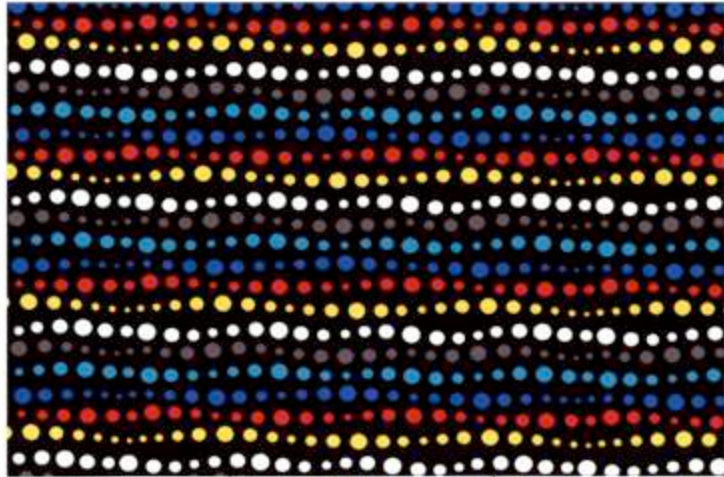
P 003: Discodots



92% Baumwolle / 8% Elasthan



P 004: Dots & Waves

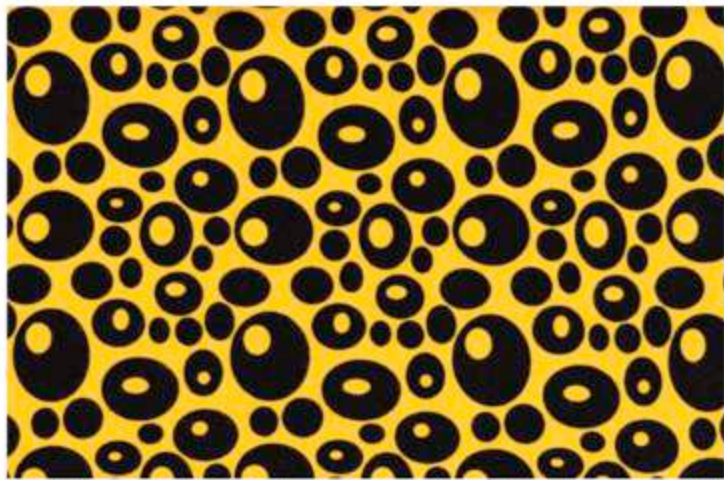


5 10 15 20 25

95% Baumwolle / 5% Elasthan



P 001: Blubb



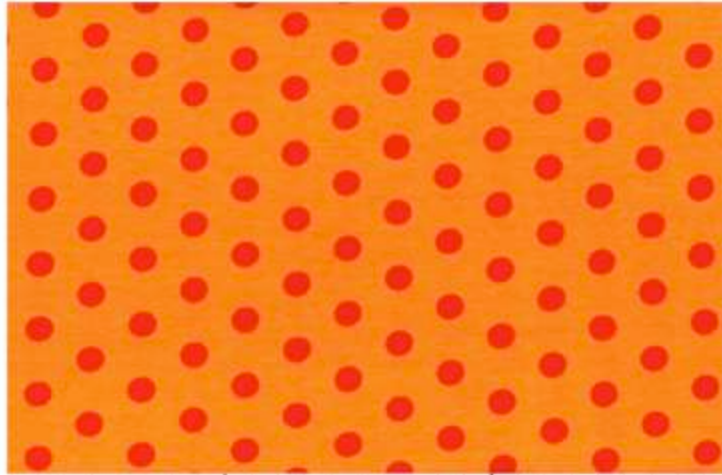
5 10 15 20 25

100% Baumwolle





P 012: Polkadots Rot/Orange

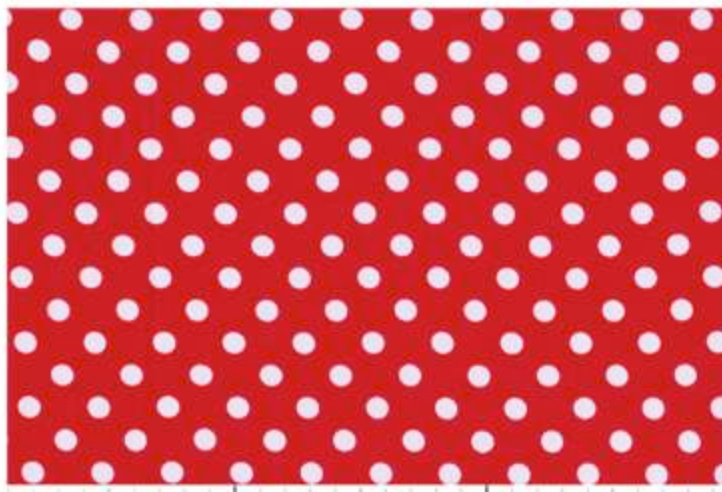


5 10 15 20 25

95% Baumwolle / 5% Elasthan



P 021: Polkadots Weiß/Rot



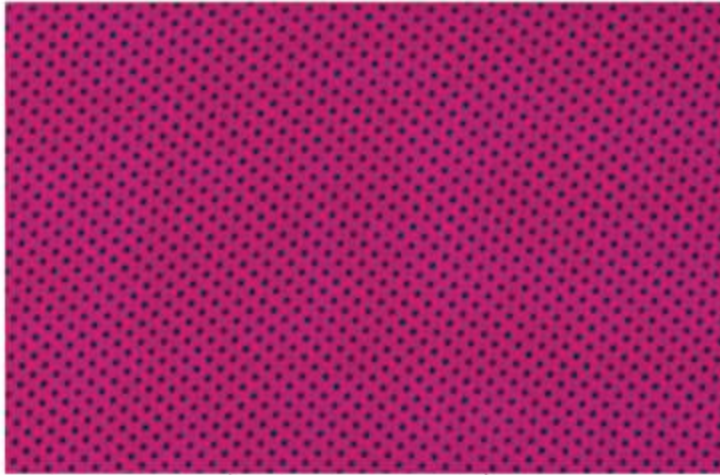
5 10 15 20 25

95% Baumwolle / 5% Elasthan





P 007: Minidots Schwarz/Pink

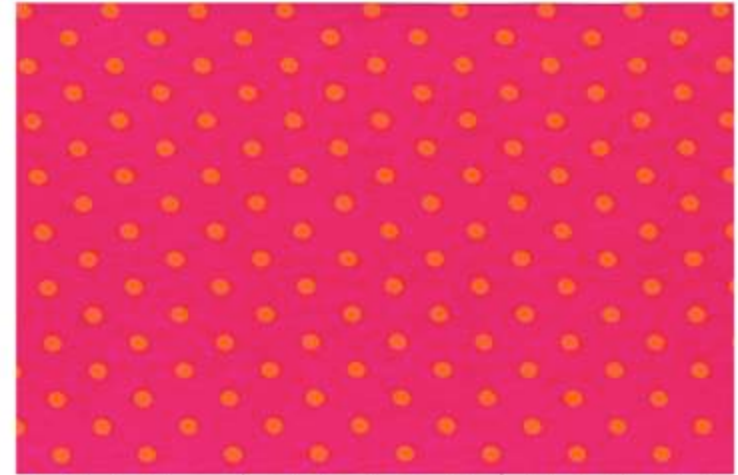


5 10 15 20 25

95% Baumwolle / 5% Elasthan



P 009: Polkadots Orange/Pink



5 10 15 20 25

95% Baumwolle / 5% Elasthan



P 015: Polkadots Schwarz/Pink



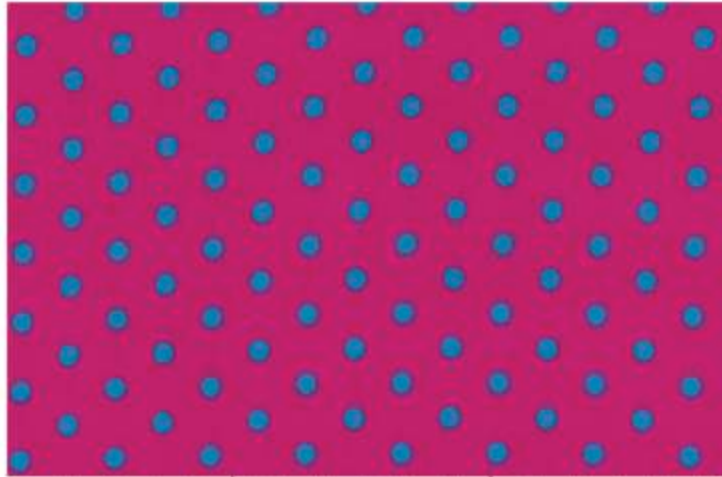
5 10 15 20 25

95% Baumwolle / 5% Elasthan





P 017: Polkadots Türkis/Pink

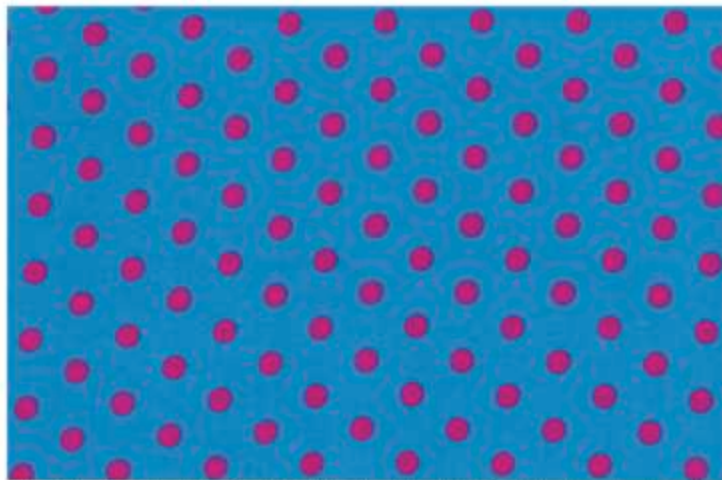


5 10 15 20 25

95% Baumwolle / 5% Elasthan



P 011: Polkadots Pink/Türkis



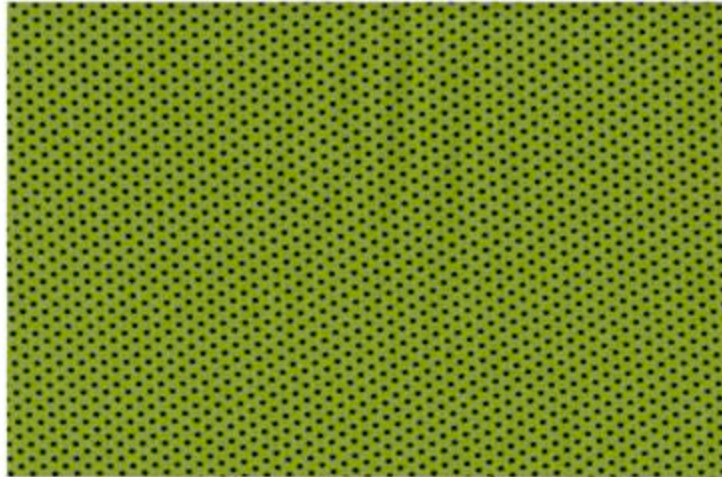
5 10 15 20 25

95% Baumwolle / 5% Elasthan





P 006: Minidots Schwarz/Lime

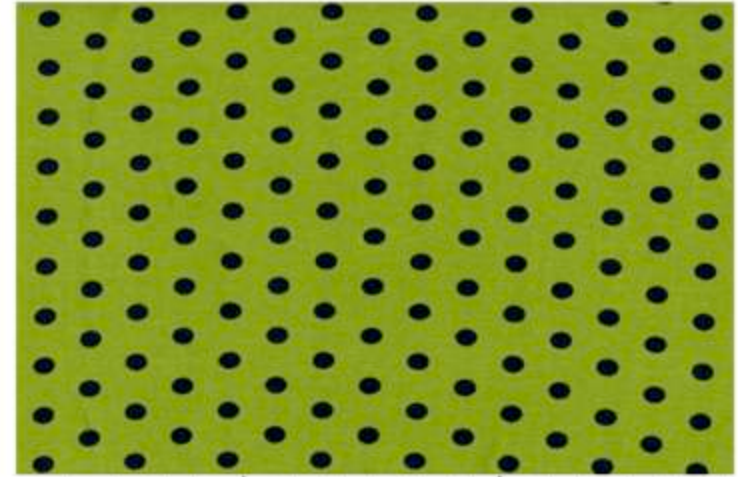


5 10 15 20 25

95% Baumwolle / 5% Elasthan



P 014: Polkadots Schwarz/Lime

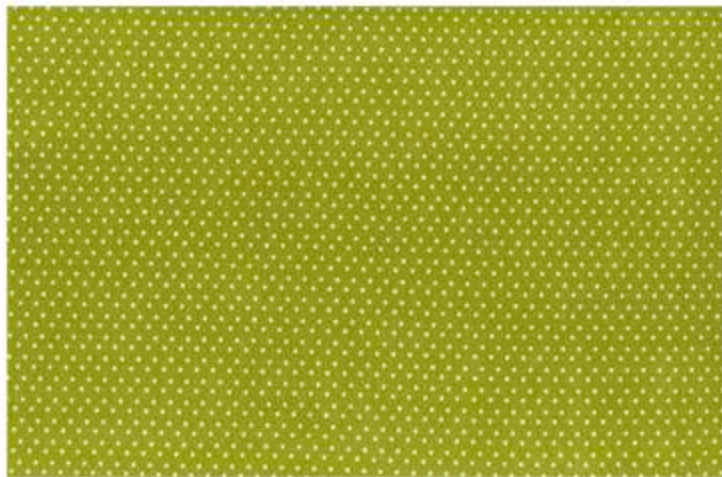


5 10 15 20 25

95% Baumwolle / 5% Elasthan



P 008: Minidots Weiß/Grün



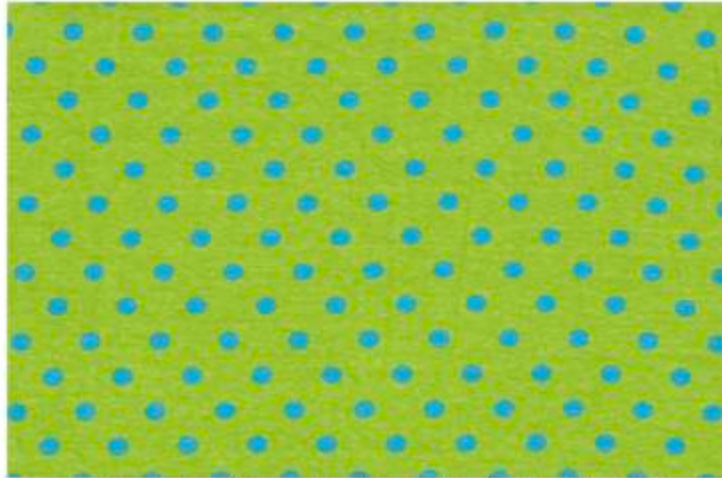
5 10 15 20 25

95% Baumwolle / 5% Elasthan





P 016: Polkadots Türkis/Grün

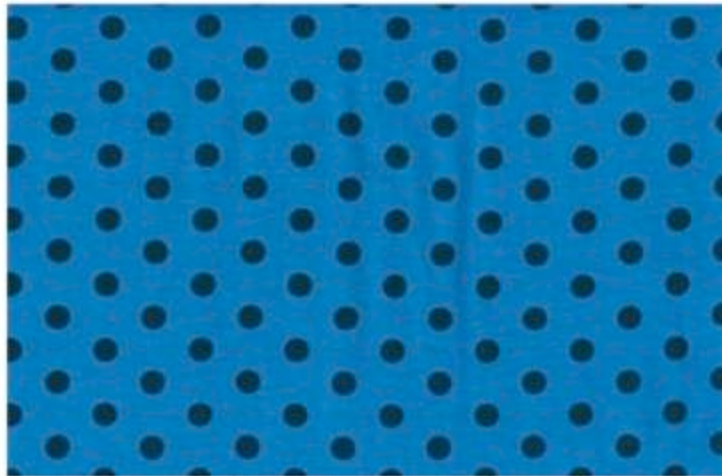


5 10 15 20 25

95% Baumwolle / 5% Elasthan



P 010: Polkadots Petrol/Türkis

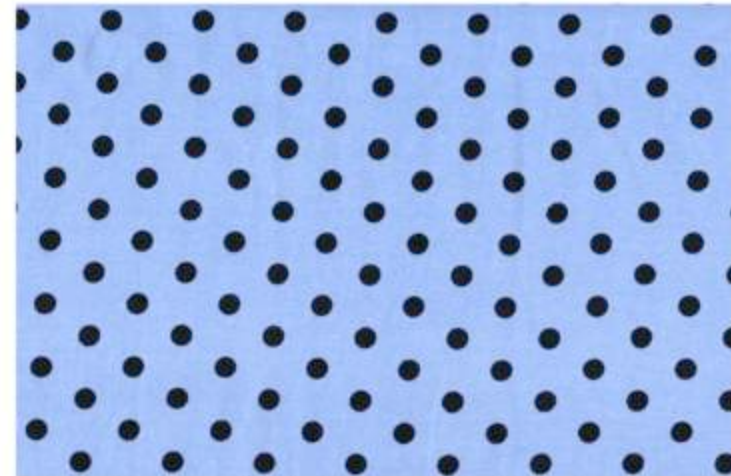


5 10 15 20 25

95% Baumwolle / 5% Elasthan



P 013: Polkadots Schwarz/Hellblau

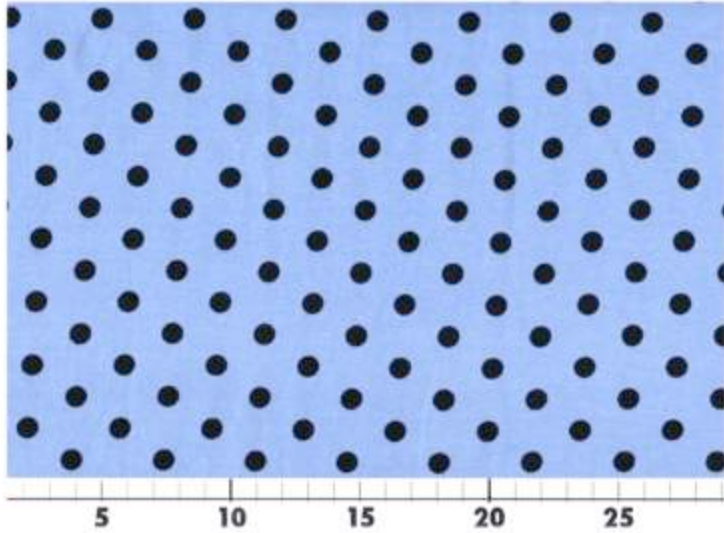


5 10 15 20 25

95% Baumwolle / 5% Elasthan



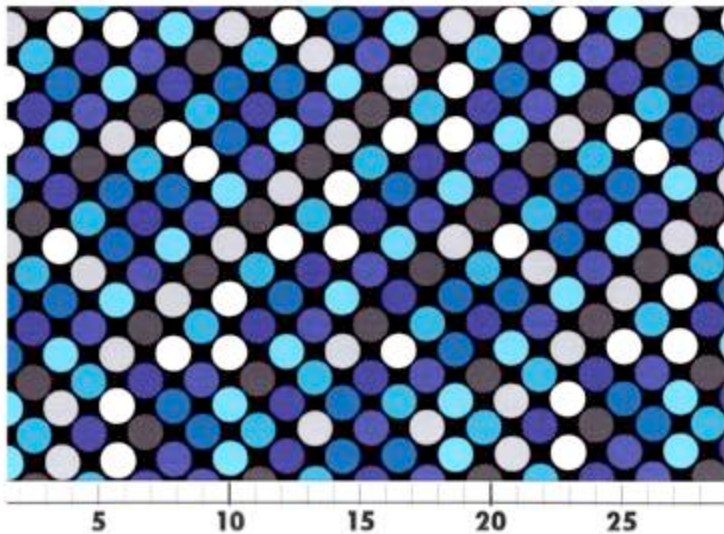
P 013: Polkadots Schwarz/Hellblau



95% Baumwolle / 5% Elasthan



P 005: Dots Blau/Grau/Weiß



92% Baumwolle / 8% Elasthan





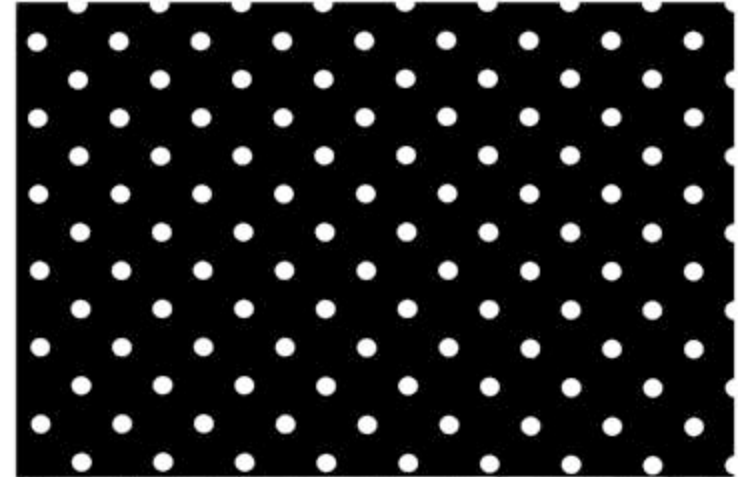
P 018: Polkadots Weiß/Anthrazit



92% Baumwolle / 8% Elasthan



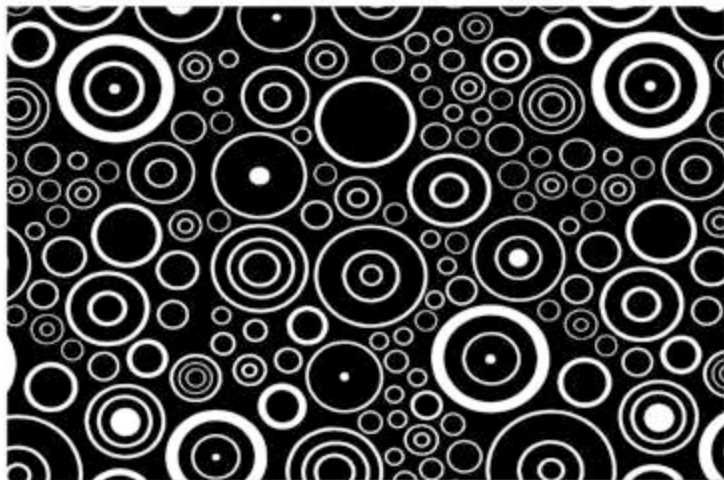
P 019: Polkadots Weiß/Schwarz



95% Baumwolle / 5% Elasthan



P 020: Retro-Kreise



92% Baumwolle / 8% Elasthan

