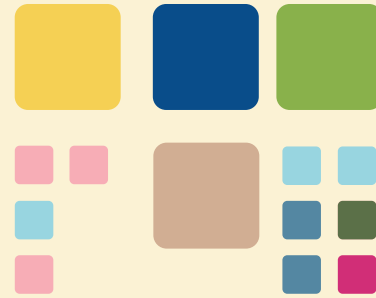
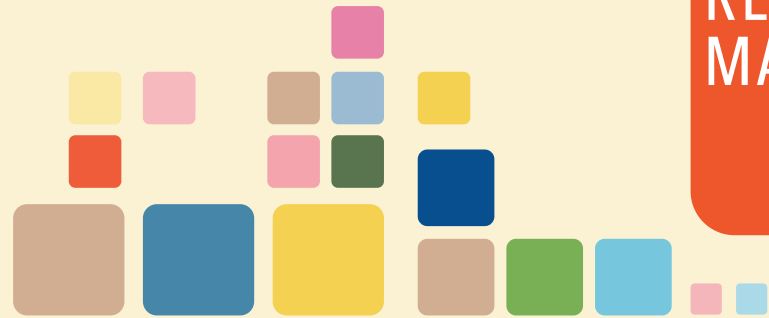


SCHOOL READINESS IN MARYLAND

The 2018-2019 Kindergarten Readiness Assessment Report



READINESS MATTERS



64,600

KINDERGARTENERS

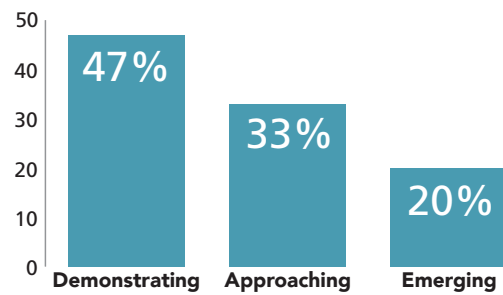
39%

KINDERGARTENERS ASSESSED BY KRA

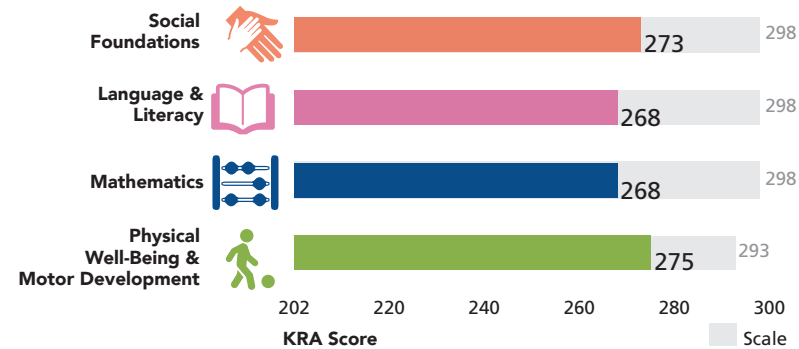
47%

DEMONSTRATE READINESS

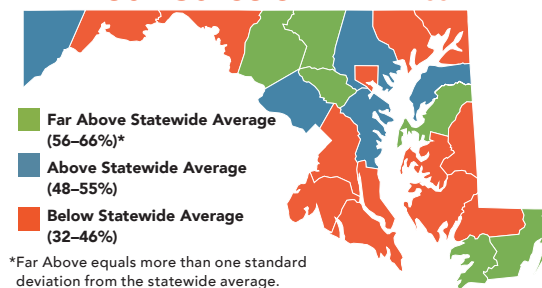
Maryland OVERALL READINESS



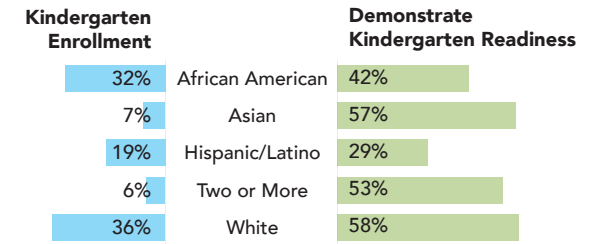
Domain AVERAGE SCALE SCORE



Jurisdiction READINESS



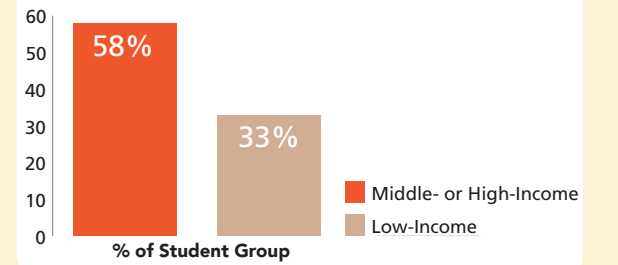
Race/Ethnicity DEMOGRAPHICS & READINESS



44%

OF KINDERGARTENERS LIVE IN LOW-INCOME HOUSEHOLDS

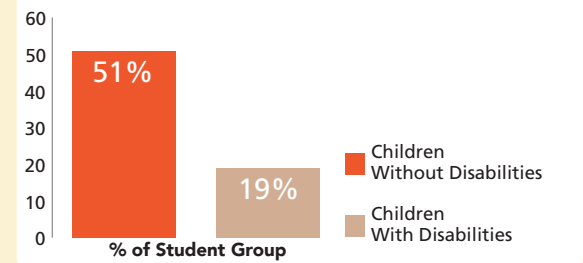
READINESS BY Household Income



9%

OF KINDERGARTENERS HAVE IDENTIFIED DISABILITIES

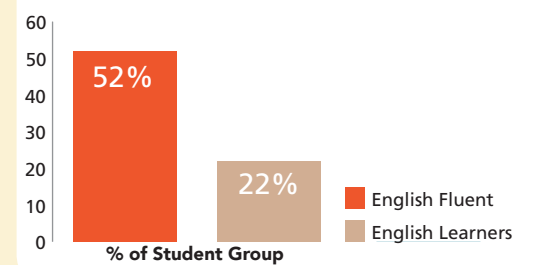
READINESS BY Disability Status



15%

OF KINDERGARTENERS ARE ENGLISH LEARNERS

READINESS BY Language Status



Developed in partnership with and support from the Maryland State Department of Education.

Ready At Five  
5520 Research Park Drive  
Suite 150  
Baltimore, MD 21228  
Phone: 410/788.5725  
Email: info@readyatfive.org  
Website: www.readyatfive.org

Scan here or visit [www.ReadyAtFive.org](http://www.ReadyAtFive.org) for additional data, including customized jurisdictional issue briefs, PowerPoint presentations, parent resources, a technical report, and an electronic version of this publication.



All of Maryland's children have the potential for success in school, career, and life. Let's do our part by ensuring that every child is given the support they need to be ready for kindergarten.

PUBLICLY FUNDED PreK Enrollment

41%

OF CHILDREN ARE ENROLLED IN PREK

44%

OF THOSE ARE ENROLLED IN A FULL-DAY PROGRAM

Percent of Children Enrolled in Publicly Funded PreK the Year Prior to Kindergarten (2017-2018)

Prior Care EXPERIENCE & READINESS

