



IMPACT Report

EXECUTIVE DIRECTOR'S LETTER

Most of you probably agree with me that life in the Inland Northwest is made all the sweeter knowing that there are folks dedicated to the protection of the lands and waters that make life here so great. I am so pleased to be part of the crew here at INLC working to do just that – protecting the best of the Inland Northwest. And YOU are part of that crew as well – you, our donors, supporters, friends, partners and volunteers. This is truly a team effort, and we are grateful for your help in this effort.

As an organization dedicated to carefully evaluating conservation opportunities using the best science we can find while deeply considering community priorities, we know that our pace of land protection must accelerate. We know this because our region's growing population and our planet's changing climate are putting a larger strain on our natural lands – making conservation and habitat restoration all the more important.

This is why INLC has been growing our staff, building our board, collaborating with more partners, increasing our visibility, and recruiting more supporters – all for the benefit of natural lands and waters, native plants and animals, and the people who depend on them – frankly, all of us!

We are happy to share the good news of our shared accomplishments in the last fiscal year, and we are even more delighted to participate in the stories that are behind these numbers – the landowners we've met, the partnerships we have deepened, the quiet forests we've walked, the streams we've waded, the laughter we've shared.

Thank you for your partnership – past, present and future. Together, we are INLC.

Dave Schaub
Executive Director

FACTS BY NUMBERS



.....
 Connecting people to nature by conserving the lands and waters essential to life in the Inland Northwest.

VOLUNTEERS



50+
VOLUNTEERS

22 GROUNDED IN
NATURE EVENTS

57 PROPERTIES
MONITORED

CONSERVATION



2,200
ACRES CONSERVED 7/2018-6/2019

4 CONSERVATION
PROPERTIES ACQUIRED

5 NEW CONSERVATION
EASEMENTS

23 miles
of protected
streams

over
20,000
acres of land protected

55+
private land
projects

40
public land
projects

55+
miles of
shoreline

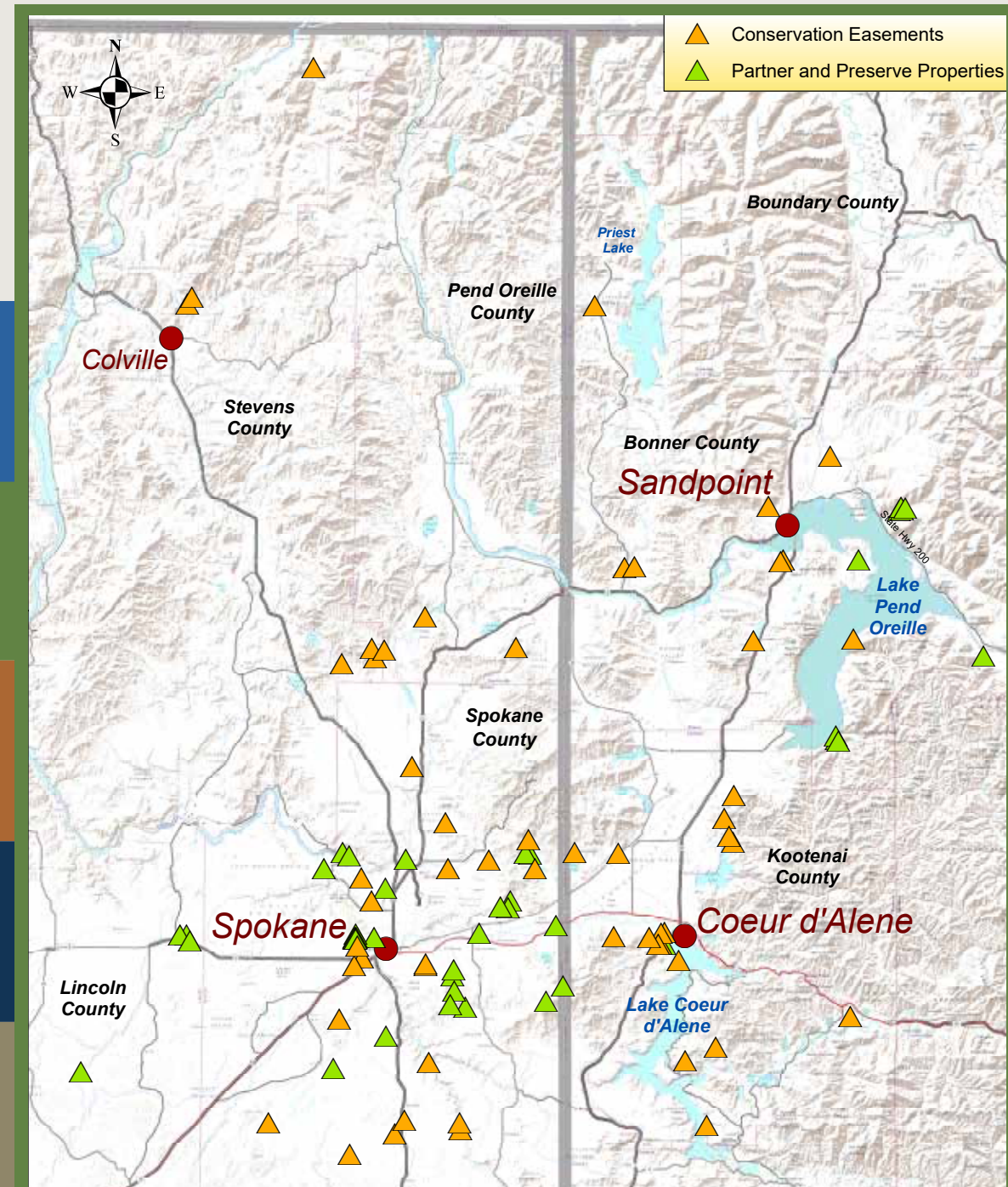
SUPPORT



526 DONORS
(full list found on INLC website)

6 STAFF

11 BOARD
MEMBERS



2019 FINANCIAL REPORT

7/1/2018-6/30/2019

This year we started a capital campaign to acquire land in the Rimrock to Riverside area as well as to build our Conservation Opportunities Fund. The long-term goal is to have \$1 million for Conservation Opportunities, \$1 million in the Stewardship Fund, and \$1 million in the endowment fund.

Assets

Cash & Savings	\$269,662
Receivables	\$5,001
Other Assets	\$24,313
Investments	\$2,076,276
Conservation land	\$481,495
Trade Land	\$2,735,000
Endowment	\$57,723
Total assets:	\$5,649,470

Liabilities

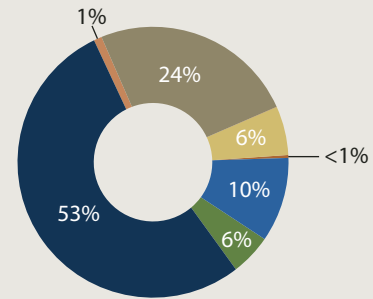
Payables and Accruals	\$26,265
-----------------------------	----------

Net Assets

Unrestricted	\$282,691
Board Restricted	\$4,219,298
Assets with Donor Restrictions	\$1,121,216
Total Net Assets	\$5,623,205
Total Liabilities and Net Assets	\$5,649,470
Change in Net Assets	\$512,603

Land Purchases

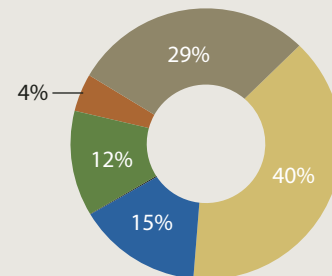
Total Land purchases	\$330,500
-----------------------------------	------------------



Revenue

Contributions	\$581,862
Bequests	\$10,000
Grants	\$267,550
Special Events	\$61,467
Programs & Other	\$3,692
Investment Income	\$109,736
In-Kind Revenue	\$61,414

Total Revenue **\$1,095,721**



Expenses

Land Stewardship	\$21,807
Land Conservation*	\$143,915
Community Conservation	\$197,763
Fundraising	\$73,591
Management	\$61,155

*Excludes land purchases



Mon-Fri 9am - 4pm
 509-328-2939
info@inlandnwland.org
www.inlandnwland.org