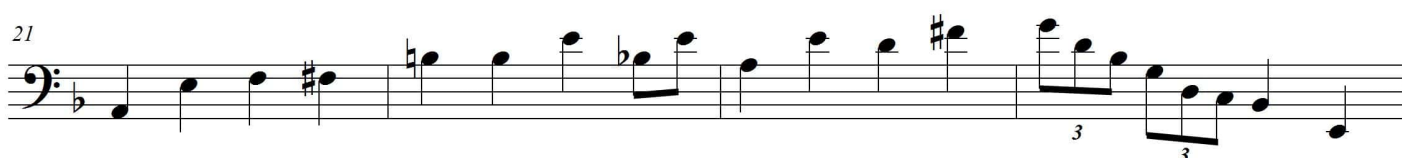
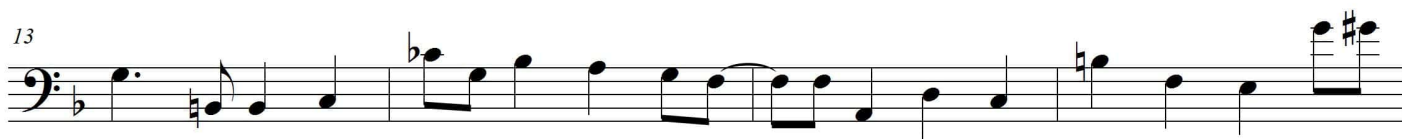
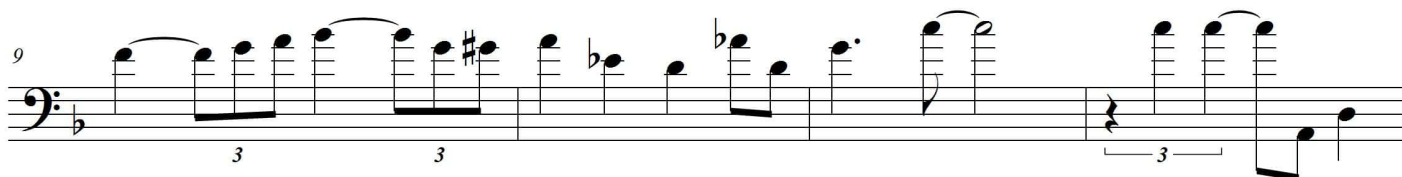
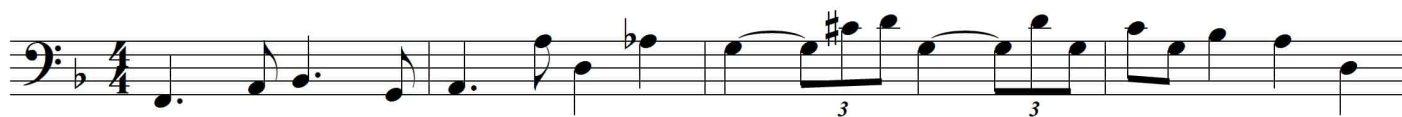


Moten Swing

Bass by Ray Brown
1963, Oscar Peterson Trio, "Night Train"

Transcribed by
Peter Bierma

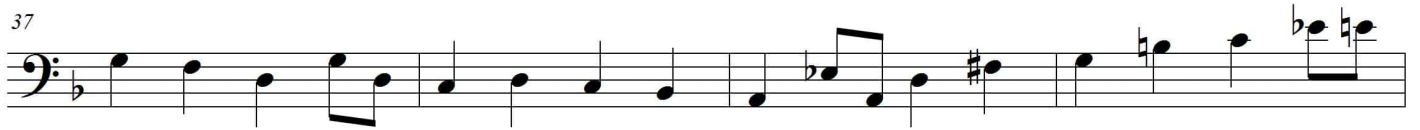
♩ = 137



33

A single bass staff containing measure 33. The staff is in bass clef with a key signature of one flat (B-flat). The melody consists of quarter and eighth notes with various accidentals (sharps, flats, naturals).

37

A single bass staff containing measure 37. The staff is in bass clef with a key signature of one flat. The melody continues with quarter and eighth notes.

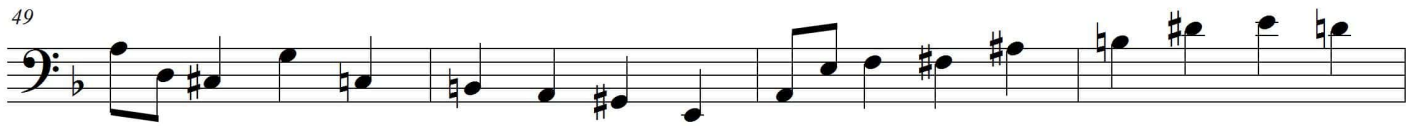
41

A single bass staff containing measure 41. The staff is in bass clef with a key signature of one flat. The melody features a mix of quarter and eighth notes.

45

A single bass staff containing measure 45. The staff is in bass clef with a key signature of one flat. The melody consists of quarter and eighth notes.

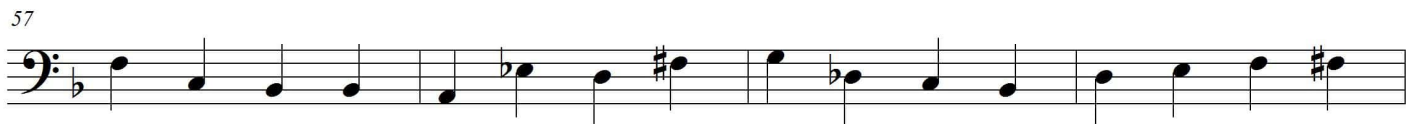
49

A single bass staff containing measure 49. The staff is in bass clef with a key signature of one flat. The melody includes quarter and eighth notes with various accidentals.

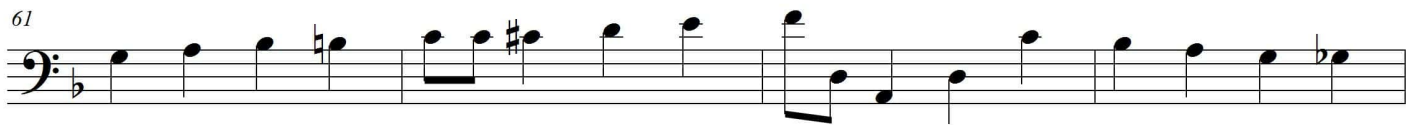
53

A single bass staff containing measure 53. The staff is in bass clef with a key signature of one flat. The melody features quarter and eighth notes.

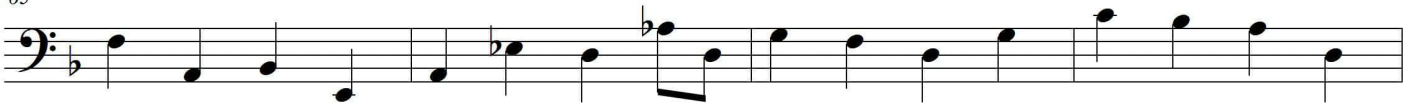
57

A single bass staff containing measure 57. The staff is in bass clef with a key signature of one flat. The melody consists of quarter and eighth notes.

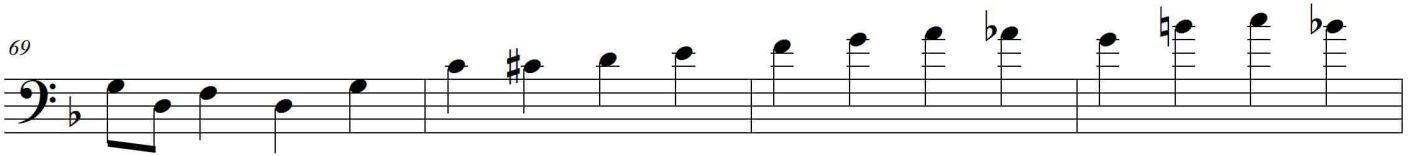
61

A single bass staff containing measure 61. The staff is in bass clef with a key signature of one flat. The melody includes quarter and eighth notes.

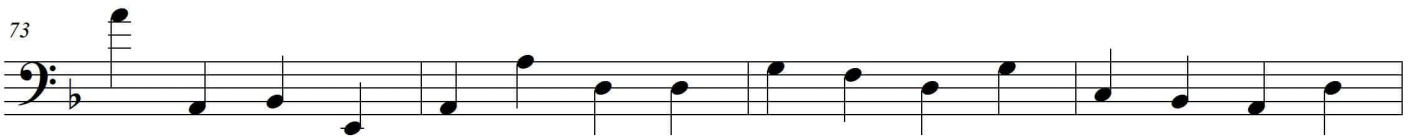
65



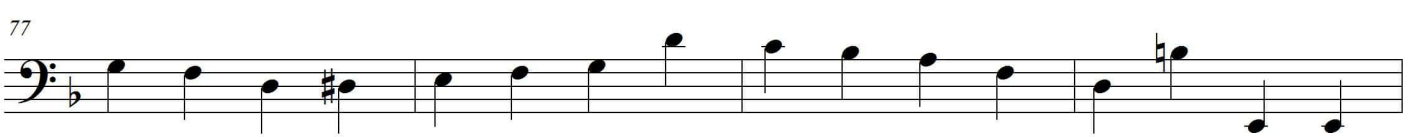
69



73



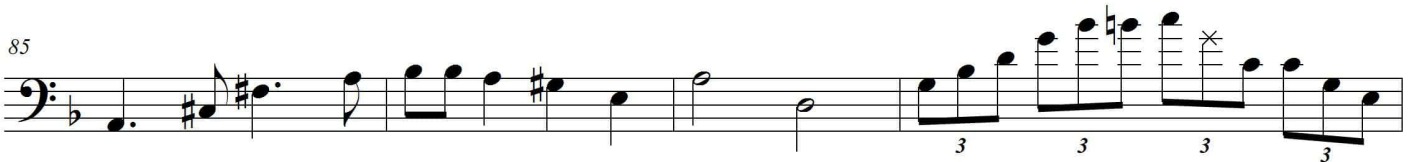
77



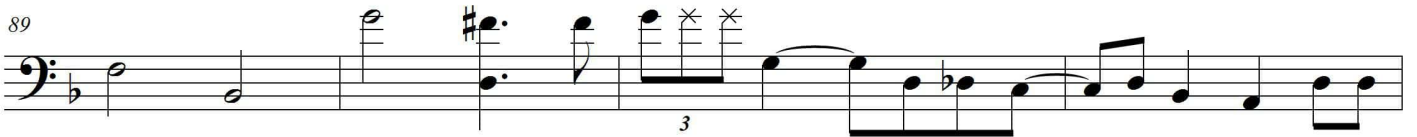
81



85



89



93

