

Colour, paint + paper

# ASK THE DESIGNER...

WHAT DO YOU THINK OF THE PLUMMY HUE OF MARSALA, THE PANTONE COLOUR OF THE YEAR AND WILL YOU BE USING THIS FULL-BODIED, 'NATURALLY ROBUST' SHADE IN YOUR SCHEMES IN 2015?



Suna Interior Design, The Filaments. Photography by Matt Livey



**REBEKAH CAUDWELL**  
Rebekah Caudwell  
Design

I tend not to use earth-toned colours. Though this Pantone colour is rich and would make a lovely dining room colour, complimented with antiques and Chinoiserie frame gold mirrors, I am not likely to use it. I'm drawn to bright highly saturated colours, like sharp yellows and brilliant turquoises. This year I'm excited about a Persimmon & Aqua room I'm working on.

*Rebekahcaudwelldesign.com*



**HELEN FEWSTER**  
Suna Interior Design

Marsala could be perceived as only an autumnal or wintry colour, think of sumptuous layers and textures, combining it with an array of warm rich colours; reds, berries and plums, maybe adding in a touch of brass or gold for added luxury. But there are ways to use and mix it that makes it a really versatile shade for all seasons.

*www.sunainteriordesign.com*



**SIMONE SPECIALE LUNCHINAT**  
S&L Associati  
Florence

The Marsala palette is definitely a choice for a temperament interior. It will be very interesting to see suitable interiors carrying this colour successfully as it is dark, moody and heavy. I have selected some Pantone colours that will be my first choice for the year; Glacier Gray is a shade that is timeless and nature's most perfect neutral and 'Titanium', a classic and tasteful colour that will be perfect with gold accessories and details.

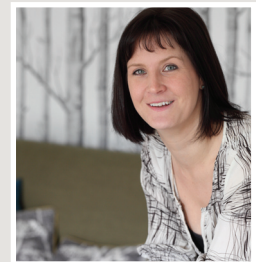
*www.essealcubo.com*



**REBECCA TUCKER**  
Suna Interior Design

Use marsala with vibrant punchy colours, a la current trends, to really make a statement; vibrant mustard, cerise or lime green against a backdrop of marsala brings it right up to date. Or add marsala to a white on white scheme, as a rich accent against a fresh clean summery interior.

*www.sunainteriordesign.com*



**CLARE PASCOE**  
Clare Pascoe Interiors

Marsala feels like a very traditional colour. Rich, red wine tones, are strong colours to use, making them too heavy as a block accent colour, unless there is a lustre to the finish like velvet. The only way to use the colour as a flat colour is to really go for it, by painting it on all the walls in a room. To carry this off, the room would have to have traditional proportions and elements. This again underscores the traditional feel of the colour.

*www.pascoeinteriors.com*