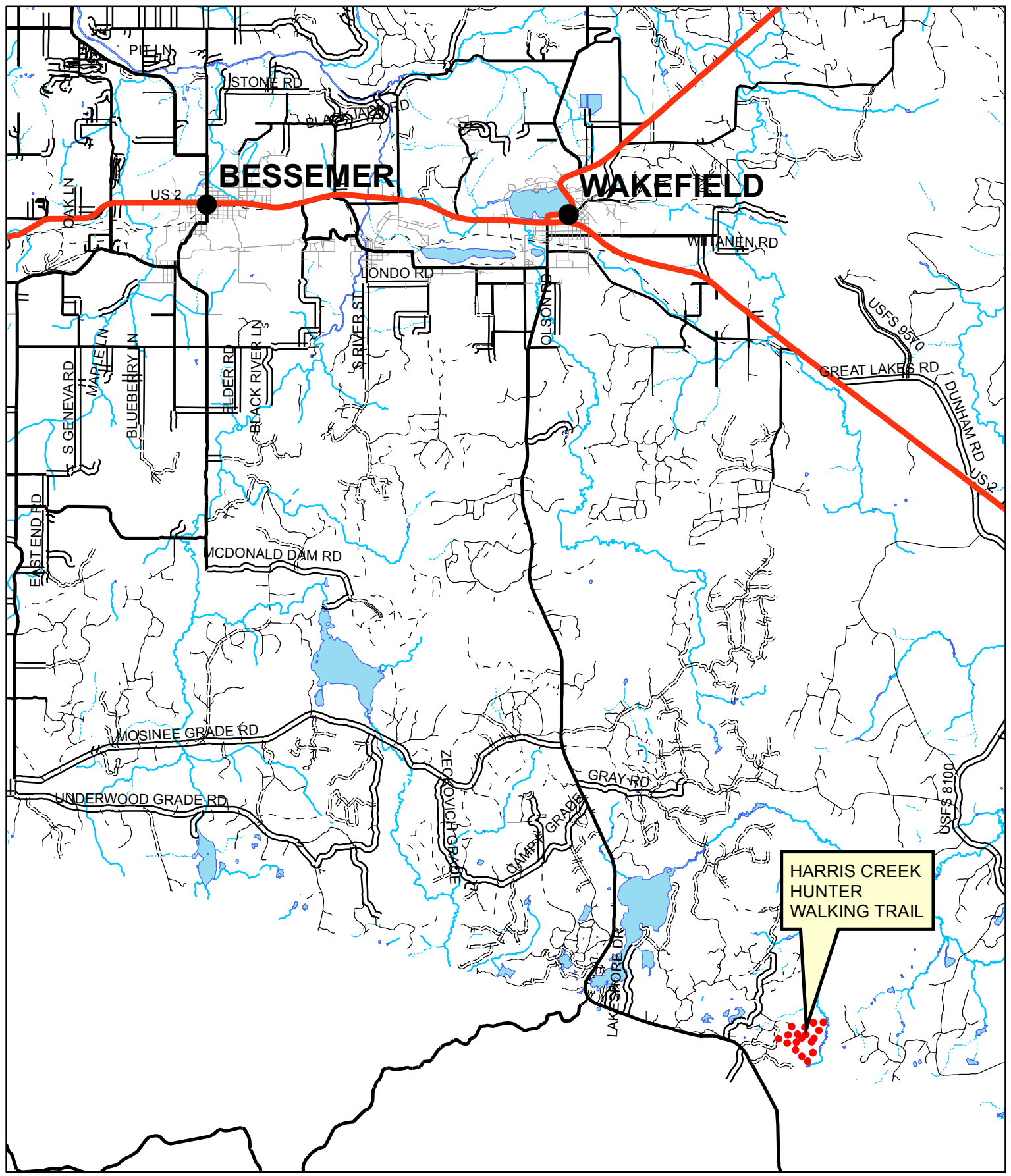


Harris Creek Hunter Walking Trail

This trail was developed by the Superior Chapter of the Ruffed Grouse Society in cooperation with the Gogebic County Forestry and Parks Commission and the Ottawa National Forest. The trails intended use is for hunting on foot or by ATV by disabled hunters only. This trail provides a unique opportunity for the use of ATV's by the disabled hunter.



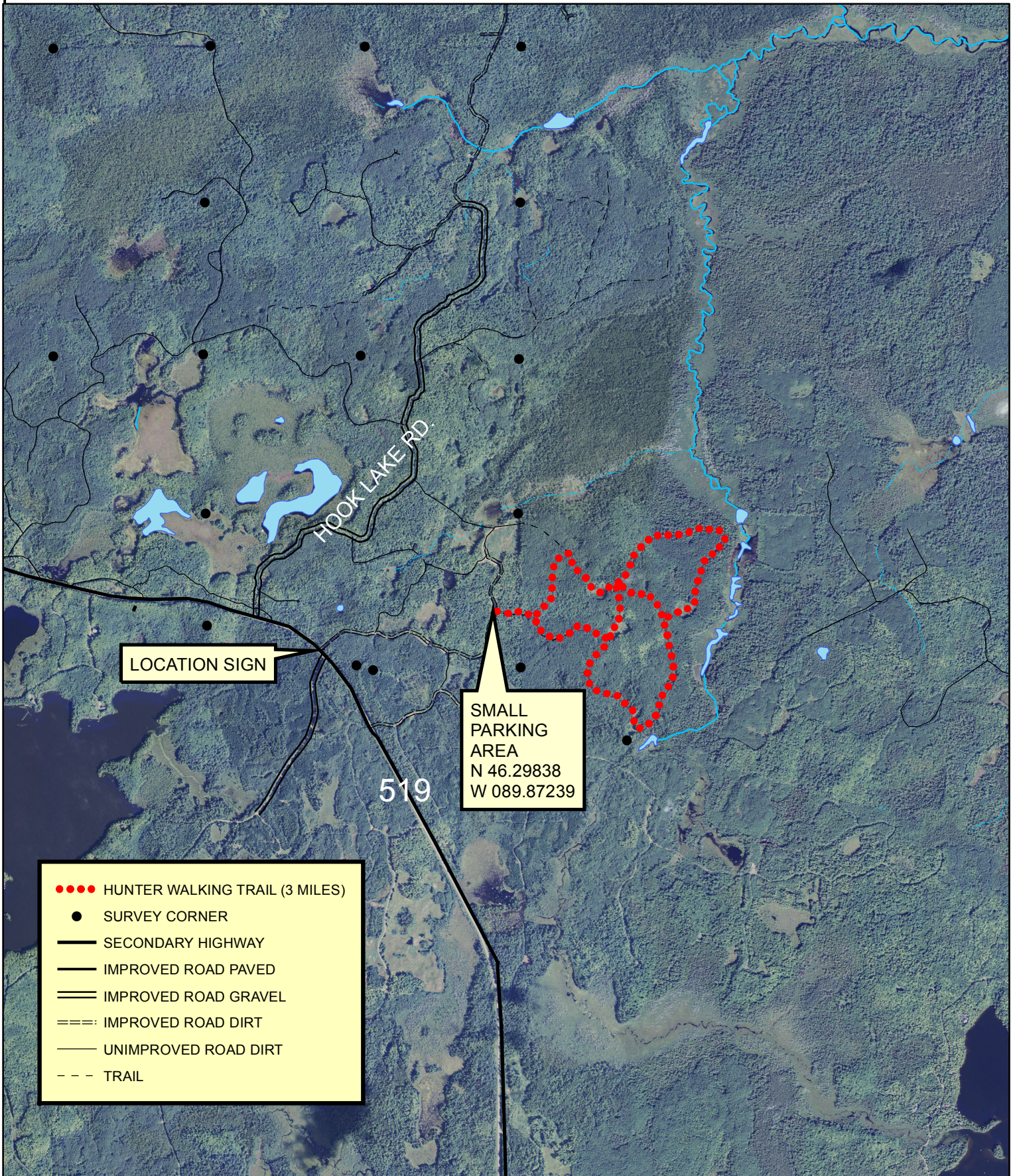
Harris Creek Hunter Walking Trail (LOCATION)



HARRIS CREEK
HUNTER
WALKING TRAIL



Harris Creek Hunter Walking Trail



LOCATION SIGN

SMALL
PARKING
AREA
N 46.29838
W 089.87239

- HUNTER WALKING TRAIL (3 MILES)
- SURVEY CORNER
- SECONDARY HIGHWAY
- IMPROVED ROAD PAVED
- IMPROVED ROAD GRAVEL
- === IMPROVED ROAD DIRT
- UNIMPROVED ROAD DIRT
- - - TRAIL

