

EBZW
ZWARTBERG

10 MAR 17 **(19-1)**

GENK
BELGIUM

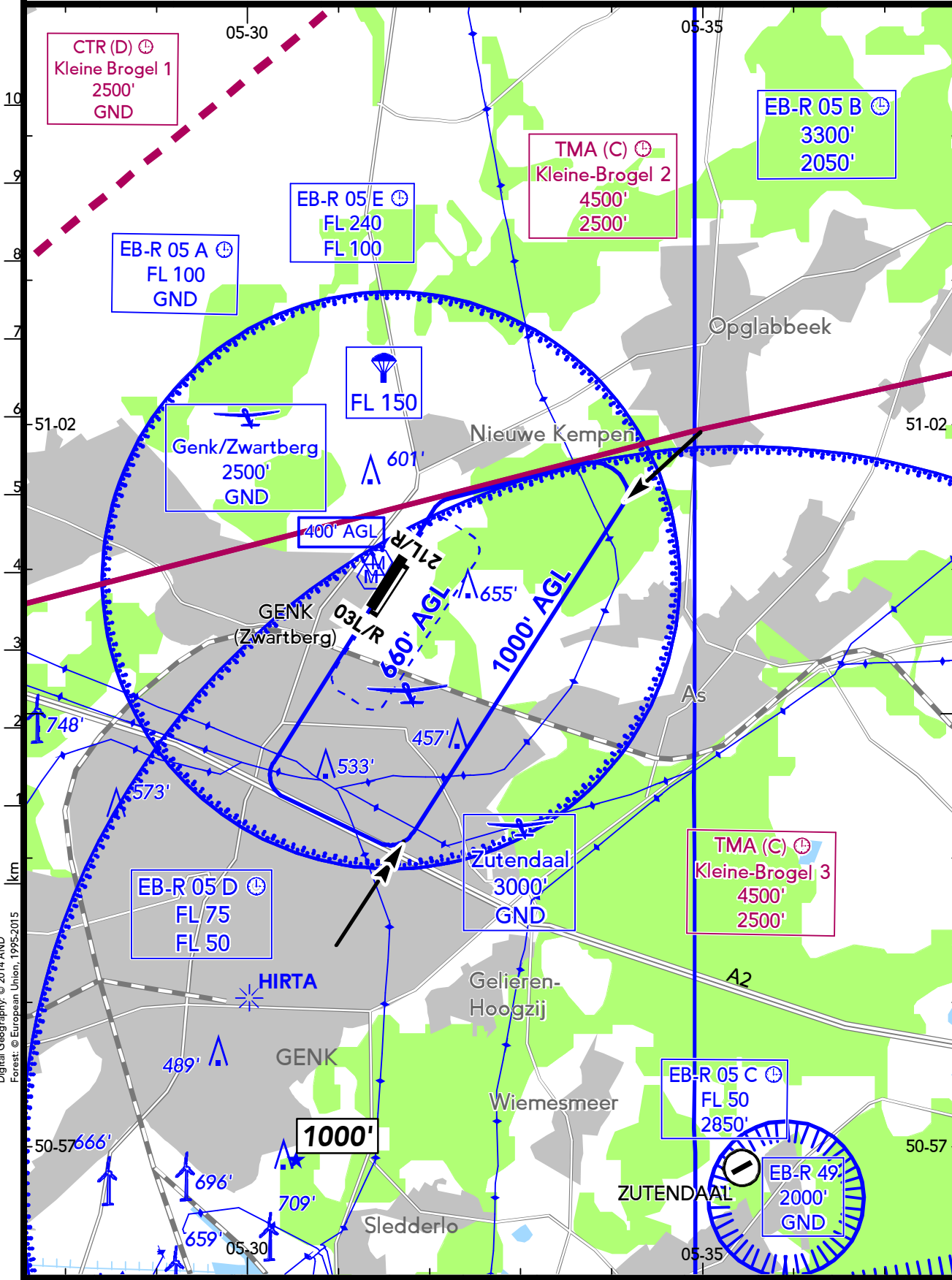
VAR 19E

SCALE 1:100000

NM

LOCATION Elev 278' /85m N51 00.9 E005 31.6	FIS BELGA INFORMATION 129.325 ⁽¹⁾ BRUSSELS INFORMATION 126.900 ⁽²⁾
	AFIS GENK RADIO 120.400 (en)
AIRSPACE KLEINE-BROGEL APPROACH 122.500 ⁽³⁾	

⁽¹⁾ MIL ⁽²⁾ CIV ⁽³⁾ Kleine Brogel TMA



Digital Geography, © 2014 AND
 Forest: © European Union, 1995-2015

EBZW
ZWARTBERG

10 MAR 17 **(19-2)**

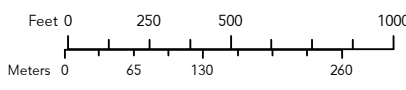
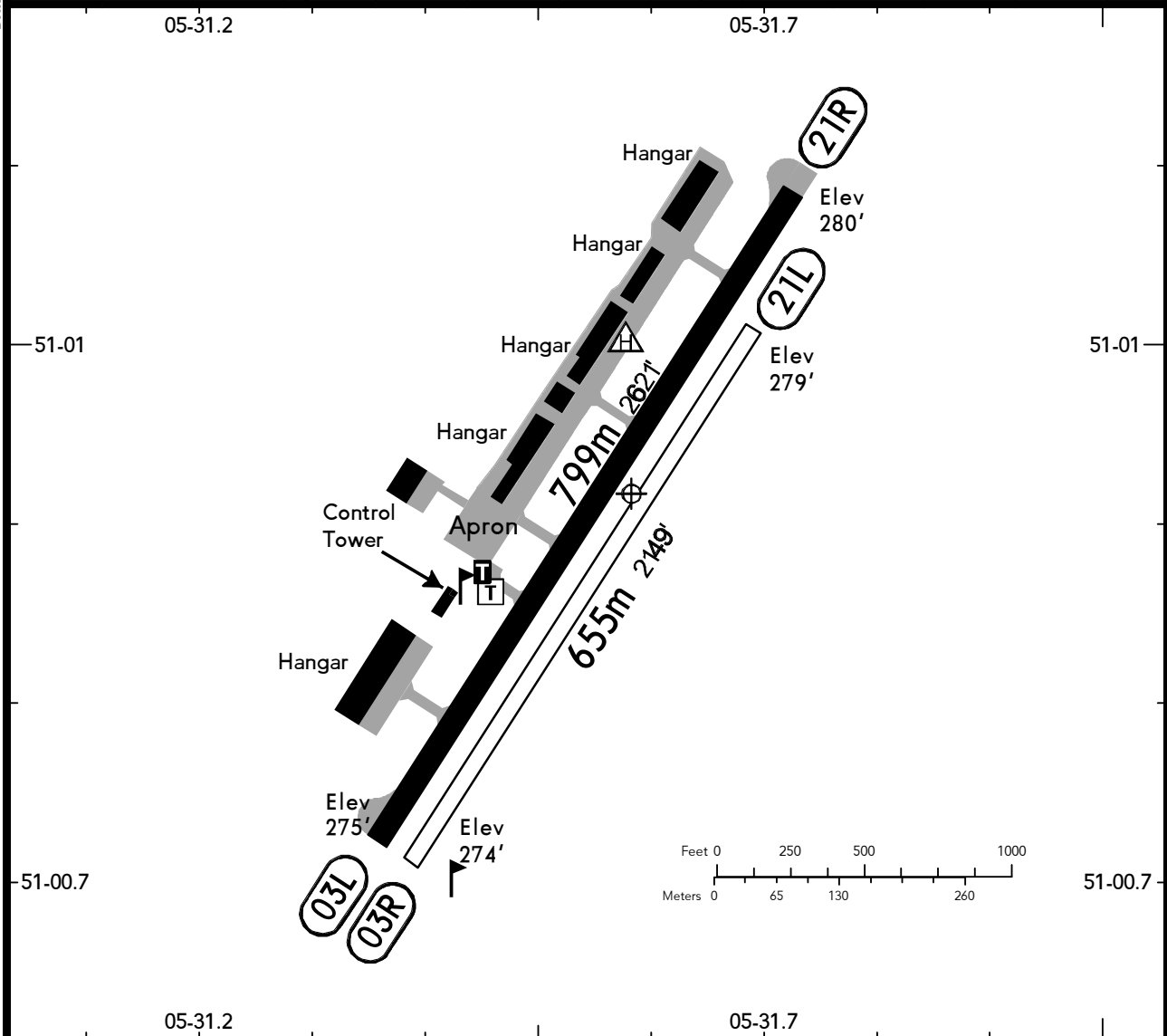
GENK
BELGIUM



BRIEFING STRIP™

LOCATION Elev 278' /85m N51 00.9 E005 31.6	AFIS GENK RADIO 120.400 (en)	ADMITTED AIRCRAFT
---------------------------------------------------------	----------------------------------------	-----------------------

SCALE 1:10000



RWY No	Dimension (m) - Surface	TORA (m)	LDA (m)	Strength	Lights
03L 21R	799 x 23 Asphalt	799	799	10t MPW	---
03R ^① 21L	655 x 18 Grass	655	655	3.5t MPW	---

^① Only for home-based pilots.

Pay attention to the EB-R5A N of AD.
 Intensive glider flying on Sat, Sun & Hol.
 Parachuting at MEEUWEN, FL 150, Sat, Sun & Hol, SR-SS.
 Due to noise abatement adhere strictly to the traffic circuit.