



PAD A CHEEK®

Mask Liner DreamWear Full Face



1. Lay the **PAD A CHEEK Mask Liner** flat with the rectangular hole at the top.

This is **IMPORTANT**.

2. Place the mask cushion, (without headgear) over the mask liner holes matching the sizes as shown.

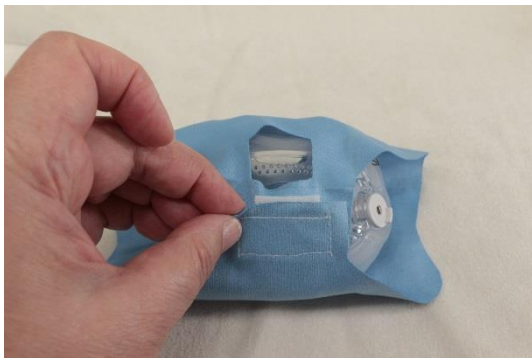
3. Pull the top of the mask liner over the vent holes and make sure they are not covered at all.

4. Pull the lower part of the mask liner up and attach the Velcro together, it should be a little loose.

5. Push the headgear tubes of the mask through the slits on the sides matching the arrow on mask sides.

6. Re-attach the fabric headgear like in photo below.

7. When wearing the mask liner, tug on the tabs on the sides of the mask liner to remove wrinkles between the liner and the cushion of the mask, this will prevent leaks.



If the hole for your nose or mouth is not large enough, trim the hole a little bit at a time to make it fit. If necessary, trim the rectangular hole near the vents.

Make certain no exhalation vents are covered with the Mask Liner



The **PAD A CHEEK® Mask Liner** is made from polyester micro fiber and should be hand washed with warm soapy water weekly and laid flat to air dry. For any questions, please contact us.

PAD A CHEEK® 434-985-4003

157 Sunset Drive, Stanardsville, VA 22973

email admin@padacheek.com

web site www.padacheek.com

Designed and Sewn in the USA