

Product Guide

Providing Fresh Water since 1921



Ritchie®

**Fresh Water
For Life™**

10 Big Reasons

Why You Should Get a

Ritchie



EcoFount



EcoFount 1
18430
pgs. 5 & 26

EcoFount 2
18440
pgs. 6 & 27

OmniFount



Omni 3
18270
pgs. 7 & 16

Omni 10
18460
pgs. 10 & 18

Omni 5
16533
pgs. 8 & 16

Omni 2
16619
pgs. 6, 15 & 27

Omni 1
18359
pgs. 5, 15 & 26

Omni-2 Special
18680
pg. 29

The Omni Combination Conversion replaces the access panel in the Omni 5 and Omni 10 pgs. 8 & 29

WaterMatic



1000
18110
pgs. 10 & 18

300
18050
pgs. 7 & 16

100
18165
pgs. 4, 14 & 26

150
18166
pgs. 6, 15 & 27

150S
18222
pg. 29

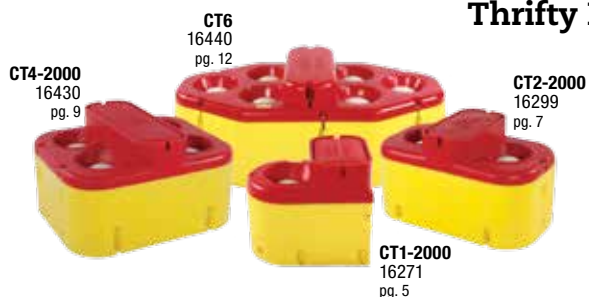
StallFount



StallFount Non-heated
16871
pg. 28

StallFount 125 Heated
18082
pg. 28

Thrifty King



CT4-2000
16430
pg. 9

CT6
16440
pg. 12

CT2-2000
16299
pg. 7

CT1-2000
16271
pg. 5

WaterMaster



WM 96
18007
pg. 11 & 19

WM 600
18171
pg. 11 & 18

WM 1200
18053
pgs. 13 & 21

WM 90
16467
pg. 11 & 19

WM 54 Deep
18355
pg. 9 & 17

WM 54
16542
pgs. 9 & 17

CattleMaster



10T
18700
pgs. 13 & 20

1440
18252
pgs. 13 & 21

480
18248
pgs. 8 & 17

840
18235
pgs. 12 & 19

DairyFount



24" Drinking Height

DairyFount 8
18820
pg. 20

Classic Equine By Ritchie



AutoFount
18720
pg. 25

EZFount
18710
pg. 24

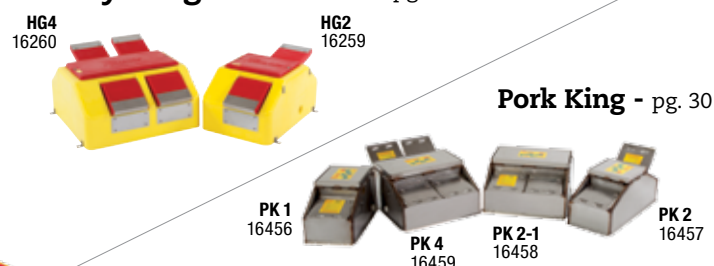
UltraFount
18730
pg. 25

UltraFount 1
18780
pg. 24

AutoFount 1
18770
pg. 24

StallFount Heated
18740
Unheated 18748
pgs. 22 & 23

Thrifty King for Swine - pg. 30



HG4
16260

HG2
16259

Pork King - pg. 30

PK 1
16456

PK 4
16459

PK 2-1
16458

PK 2
16457



Fresh water

Trough and valve combinations are sized to provide as much water as your animals want, yet at the same time, limit the amount that sits in the trough when they are not drinking. That way the water is fresh and clean. Ritchie's high flow valves are available in two different sizes, depending on the size of the fountain's trough. Valves are available in different flow capacities to accommodate different supply line pressures.

The best warranty in the industry

Want to know how strongly a company believes in its products? Just look at the warranty and see if it has any teeth in it. At Ritchie, we provide a superior fountain, so we offer a superior 10 year limited warranty program on all our poly products: five years full, followed by five years prorated. Steel products carry a 10 year, 100% warranty on stainless troughs against manufacturing defects and corrosion; one year full and nine years prorated on casing and cover. None of our competition (concrete, poly or steel) offers a warranty this strong.

Totally sealed polyethylene units

You might think we're taking excessive pride in our workmanship, but we can't help bragging on the fact our heavy-duty, impact resistant, polyethylene fountains are totally sealed so moisture can't get to the insulation. Our poly is thicker than the competition. In addition, the heavy wall, roto-molded one piece construction employs UV inhibitors for extended life.

Nothing less than 304 stainless

There are cheaper grades of stainless steel out there, but you won't find them in Ritchie fountains. Our steel troughs are made of 304 stainless—the ultimate in durability and corrosion resistance.

Designed with animal safety in mind

All of Ritchie's heavy-duty poly fountains have smooth, curved surfaces. Stainless steel troughs feature protected edges. All heated stainless steel troughs tested to United States, Canadian or European applicable standards.

*See individual units for ratings.

Heavy-duty, but not heavy

Compare a Ritchie fountain with the concrete water unit offered by the competition. Our troughs don't pit, they're easy to clean, they're economical to heat and they don't compromise the cleanliness of the water. Two people can install a Ritchie fountain, but you'll need heavy equipment to install a concrete unit. Ritchie fountains use 75% less energy than concrete.

Smart design keeps things in working order

Our water seal design eliminates the need for gaskets that can freeze, crack and tear. No one else uses this superior sealing technology to keep cold air away from the valve, which is the heart and soul of any fountain. By protecting our high capacity valves, we're protecting your investment.

Long, long life

Many livestock producers only buy a Ritchie fountain once every 30 years or so, but that's because their original Ritchie fountain has served them faithfully for all 30 years! Pride in workmanship is still one of the hallmarks of the Ritchie business and we make it easy on you by building fountains you can rely on, day in and day out. Once you find the right fountain for your operation, you'll understand why Ritchie products inspire the kind of loyalty that lasts for years.

Grade A dairy recommendations

You don't have to search the entire Ritchie product line for a fountain that meets Grade A dairy recommendations—they all do!

Minimal energy costs

Designed with efficient energy use in mind, Ritchie fountains keep from freezing without much cost. The costs below represent an entire year's energy costs, calculated at a rate of 8 cents per kilowatt hour. They are derived from university and Ritchie testing and have been adjusted by the degree days for each area. This illustrates the impact that poly construction has on energy usage, as well as the effect covered troughs have on energy efficiency.

ESTIMATED ANNUAL ENERGY COST						
FOUNTAIN	WINNEPEG, MANITOBA	FARGO, NORTH DAKOTA	SIOUX FALLS, SOUTH DAKOTA	CONRAD, IOWA	ST. LOUIS, MISSOURI	OKLAHOMA CITY, OKLAHOMA
EcoFount 1	\$16.92	\$15.61	\$14.65	\$13.51	\$8.37	\$6.54
EcoFount 2	\$24.28	\$22.40	\$21.03	\$19.40	\$12.02	\$9.39
Pork King 2 SS	\$47.17	\$43.53	\$40.85	\$37.69	\$23.34	\$18.24
Stall Fount II 125	\$21.75	\$20.07	\$18.83	\$17.38	\$10.76	\$8.41
WaterMatic 150	\$29.96	\$27.64	\$25.95	\$23.94	\$14.83	\$11.58
WaterMatic 300	\$49.94	\$46.07	\$43.24	\$39.90	\$24.71	\$19.31
OmniFount 2	\$44.40	\$40.97	\$38.45	\$35.47	\$21.97	\$17.16
OmniFount 5	\$53.58	\$49.44	\$46.40	\$42.81	\$26.51	\$20.71
CT2-2000 w/Immersion Heater	\$14.65	\$13.52	\$12.68	\$11.70	\$7.25	\$5.66
WaterMaster 90 w/Immersion Heater	\$79.90	\$73.72	\$69.19	\$63.84	\$39.54	\$30.89
CattleMaster 840	\$170.78	\$157.58	\$147.89	\$136.45	\$84.51	\$66.02

All costs are based on a rate of 8 cents per kilowatt hour. Your cost may vary. Estimates based on U.S. dollars. • Visit www.ritchiefount.com for a complete list of energy ratings.

THE DOLLAR AND SENSE CHOICE

It pays to have your cattle drinking clean water. With cattle prices soaring, keeping your herd healthy is more important than ever before. Fresh water on demand is critical to the health of your cattle. Make sure it's always available when you rely on Ritchie waterers.

"We bought our first Ritchie waterer when we thought we couldn't afford it, only to realize we couldn't afford not to have it. It paid for itself in energy savings in about 2 seasons, compared to using a stock-tank and heater."

Rich & Carol Radtke
Prairie's Edge Farm
Kerkhoven, MN

For more information visit www.ritchiefount.com

Ritchie is a Proud member of:



WaterMatic 100

The WaterMatic 100 is a single sided automatic waterer for calves, cattle and small herds. Ideal for stalls, small pens or paddocks. The drop in cover is easy to lift for maintenance and cleaning. Trough slopes towards drain hole for easy cleaning and debris removal.

- No gaskets to crack, tear or leak
- One piece rugged fountain body
- Generous side access panel
- Easy to clean and maintain
- All surfaces slope to drains for easy clean out
- Ideal for individual stalls or pens
- Immersion Heater and Self-Regulating Heat Cable required for freezing conditions (sold separately)

MODEL	PART #	LENGTH IN/CM	WIDTH IN/CM	OVERALL HEIGHT IN/CM	DRINKING HEIGHT IN/CM	SHIPPING WEIGHT LBS/KG	HEAT (CF=CONSTANT FLOW)	CAPACITY GAL/LITER	HERD CAPACITY
WaterMatic 100	18165	24.5/62	14/36	23.5/60	18/46	38/17	Opt Imm & Self-Reg Heat Cbl	2.8/11	20 beef

OmniFount 1

Designed with animal safety in mind, the OmniFount 1 features smooth rounded edges and a fully insulated casing for energy efficiency. The stainless steel trough features thermostatically controlled heat elements that are attached to the underside for frost free service even under the most severe winter conditions. The OmniFount 1's single trough has a fast refill valve.

- Easy to maintain and clean
- Large access panel for ease in maintenance
- Heating elements are located directly under the stainless steel trough for exceptional performance and overall heat coverage
- Cable heater provides extra valve and supply line protection
- Durable insulated with energy efficient polyurethane foam
- OmniFount unit comes complete and ready to install
- UL/CUL approved



MODEL	PART #	LENGTH IN/CM	WIDTH IN/CM	OVERALL HEIGHT IN/CM	DRINKING HEIGHT IN/CM	SHIPPING WEIGHT LBS/KG	HEAT (CF=CONSTANT FLOW)	WATTS (AMPS)	CAPACITY GAL/LITER	HERD CAPACITY
OmniFount 1	18359	20/51	14.5/37	25/64	18/46	39/18	Std Electric	173W (1.4A@120V)	1.5/6	20 beef

EcoFount 1

The EcoFount waterers are the most energy efficient, electric standard heated line of Ritchie automatic waterers. The flip top cover design allows easy cleaning and maintenance and the fully insulated casing provides excellent protection against cold temperatures. The 304 stainless steel trough features thermostatically controlled heating elements for ice-free service during severe winter conditions. EcoFount 1 is a single drink ideal in small pens or paddocks.

- Designed with energy efficiency in mind. The stainless steel trough is surrounded by extremely durable and fully insulated poly
- Plastic drink well helps insulate water and keep thermal cap in place
- Flip-top cover feature for easy cleaning and maintenance
- Electric heat with adjustable disc thermostat
- Cable heater provides extra valve and supply line protection
- UL/CUL approved



MODEL	PART #	LENGTH IN/CM	WIDTH IN/CM	OVERALL HEIGHT IN/CM	DRINKING HEIGHT IN/CM	SHIPPING WEIGHT LBS/KG	HEAT (CF=CONSTANT FLOW)	WATTS (AMPS)	CAPACITY GAL/LITER	HERD CAPACITY
EcoFount 1	18430	22/56	18/46	20/51	20/51	41/19	Std Electric	173W (1.4A@120V)	3.5/13	30 beef

Thrifty King CT1-2000

The Thrifty King CT1 is an energy efficient or energy free, single drink automatic livestock waterer. Ideally used in small pens or hobby farms. The water is completely surrounded by fully insulated polyethylene plastic – including an insulated elliptical enclosure covering the drink areas. The covered water keeps the water cooler in summer and reduces loss of water due to evaporation.

- ThermalEqualizer design in patented drinking well eliminates cold spots in water storage
- Elliptical closures tip easily so animals can drink without resistance, unlike round balls which take a great deal of pressure
- High capacity valve, protected from cold by patented drink well
- Finger-lift service cover; No tools, springs, or clips
- Ten head required* for energy free usage otherwise, use Immersion Heater and Self-Regulating Heat Cable for winter (sold separately)



MODEL	PART #	LENGTH IN/CM	WIDTH IN/CM	OVERALL HEIGHT IN/CM	DRINKING HEIGHT IN/CM	SHIPPING WEIGHT LBS/KG	HEAT (CF=CONSTANT FLOW)	CAPACITY GAL/LITER	HERD CAPACITY
Thrifty King CT1	16271	28/71	20.3/51	25/64	19/48	61/28	Opt Imm & Self-Reg Heat Cbl	11.2/42	30 beef

*For Thrifty King energy free requirements, visit the Thrifty King series at RitchieFount.com



WaterMatic 150

The WaterMatic 150 is ideal for fence line applications with its small compact two-trough design. The waterer is fully insulated to keep the water cool in the summer and provides added protection during the winter. The drop in cover is easy to lift for maintenance and cleaning. Trough slopes towards drain holes for easy cleaning and debris removal.

- No gaskets to crack, tear or leak
- One piece rugged fountain body
- Generous side access panel
- Easy to clean and maintain
- All surfaces slope to drains for easy clean out
- Ideal for a fence line application
- Immersion Heater and Self-Regulating Heat Cable required for freezing conditions (sold separately)

MODEL	PART #	LENGTH IN/CM	WIDTH IN/CM	OVERALL HEIGHT IN/CM	DRINKING HEIGHT IN/CM	SHIPPING WEIGHT LBS/KG	HEAT (CF=CONSTANT FLOW)	CAPACITY GAL/LITER	HERD CAPACITY
WaterMatic 150	18166	33.5/85	14/36	23.5/60	18/46	50/23	Opt Imm & Self-Reg Heat Cable	42/16	40 beef



OmniFount 2

The OmniFount 2 is a double sided automatic waterer for cattle. Ideally used when splitting a fence for small pens and paddocks. The stainless steel trough features thermostatically controlled heat elements for frost free service even under the most severe winter conditions.

- Easy to maintain and clean
- Large access panel for easy access to heating components and waterline
- Heating elements are located directly under the stainless trough for exceptional performance while cable heater provides extra valve and supply line protection
- Insulated with energy efficient polyurethane foam, providing an R-factor of R-7 per inch
- Comes complete and ready to install to your electric and waterlines
- UL/CUL approved

MODEL	PART #	LENGTH IN/CM	WIDTH IN/CM	OVERALL HEIGHT IN/CM	DRINKING HEIGHT IN/CM	SHIPPING WEIGHT LBS/KG	HEAT (CF=CONSTANT FLOW)	WATTS (AMPS)	CAPACITY GAL/LITER	HERD CAPACITY
OmniFount 2	16619	28.3/72	14.5/37	25/64	18/46	45/20	Std Electric	298W (2.5A@120V)	2.2/8	40 beef



EcoFount 2

EcoFount 2 is a double drink automatic waterer for 1-60 cattle. Ideally used when splitting a fence for small pens and paddocks. The flip top cover design allows easy cleaning and maintenance and the fully insulated casing provides excellent protection against the cold temperatures. The 304 stainless steel trough features thermostatically controlled heating elements for ice-free service during severe winter.

- Designed with energy efficiency in mind. The stainless steel trough is surrounded by extremely durable and fully insulated poly
- Plastic drink well helps insulate water & keep thermal cap in place
- Flip-top cover feature for easy cleaning and maintenance
- Electric heat with adjustable disc thermostat provides overall heat coverage
- Cable heater provides extra valve and supply line protection
- Unit comes complete and ready to install to your electric and waterlines
- UL/CUL approved

MODEL	PART #	LENGTH IN/CM	WIDTH IN/CM	OVERALL HEIGHT IN/CM	DRINKING HEIGHT IN/CM	SHIPPING WEIGHT LBS/KG	HEAT (CF=CONSTANT FLOW)	WATTS (AMPS)	CAPACITY GAL/LITER	HERD CAPACITY
EcoFount 2	18440	36/91	18.5/47	20/51	20/51	75/34	Std Electric	298W (2.5A@120V)	6.5/25	60 beef

OmniFount 3

Designed with animal safety in mind, the OmniFount 3 features smooth rounded edges and a fully insulated casing for energy efficiency. The stainless steel trough features thermostatically controlled heat elements that are attached to the underside for frost free service even under the most severe winter conditions. Easy to maintain and clean.

- Large access panel for easy access to heating components and waterline
- Heating elements are located directly under the stainless trough for exceptional performance while cable heater provides extra valve and supply line protection
- Insulated with energy efficient polyurethane foam, providing an R-factor of R-7 per inch
- OmniFount 3 requires minimal assembly and comes complete and ready to install to your electric and waterlines
- UL/CUL approved



MODEL	PART #	LENGTH IN/CM	WIDTH IN/CM	OVERALL HEIGHT IN/CM	DRINKING HEIGHT IN/CM	SHIPPING WEIGHT LBS/KG	HEAT (CF=CONSTANT FLOW)	WATTS (AMPS)	CAPACITY GAL/LITER	HERD CAPACITY
OmniFount 3	18270	31.5/80	22/56	33/84	26/66	77/35	Std Electric	548W (4.6A@120V)	10/38	100 Beef

WaterMatic 300

The WaterMatic 300 is ideal for fence line applications with its two trough design. The waterer is fully insulated and impact resistant to your larger herds. The insulation keeps the water cool in the summer and provides added protection during the winter. The drop in cover is easy to lift for maintenance and cleaning. Trough slopes towards drain holes for easy cleaning and debris removal. Drain plugs can be moved to the valve chamber opening for short-term trough shut-off during cleaning, when the pen is empty or during excessively cold nights.

- No gaskets to crack, tear or leak
- One piece rugged fountain body with generous side access panel
- Easy to clean and maintain
- All surfaces slope to drains for easy clean out
- Immersion Heater and Self-Regulating Heat Cable for freezing conditions (sold separately)



MODEL	PART #	LENGTH IN/CM	WIDTH IN/CM	OVERALL HEIGHT IN/CM	DRINKING HEIGHT IN/CM	SHIPPING WEIGHT LBS/KG	HEAT (CF=CONSTANT FLOW)	CAPACITY GAL/LITER	HERD CAPACITY
WaterMatic 300	18050	36/91	21.5/55	31/79	26/66	71/32	Opt Imm & Self-Reg Heat Cbl	8.2/31	125 beef

Thrifty King CT2-2000

Insulated so well that you can make it through the winter without supplying heat in many areas, and it takes little electricity in those areas where the winter is severe or energy free requirements* are not met. The water is completely surrounded by fully insulated plastic, including an insulated elliptical enclosure covering the drink areas. The covered water keeps the water cooler in summer and reduces loss of water due to evaporation.

- ThermalEqualizer design in drinking well eliminates cold spots in water storage and protects high capacity valve
- Elliptical closures tip easily so animals can drink without resistance, unlike round balls which take a great deal of pressure
- Optional electric heat, Immersion Heater and Self-Regulating Heat Cable (sold separately)
- Two hole waterer ideal for fence line or stand-alone application



MODEL	PART #	LENGTH IN/CM	WIDTH IN/CM	OVERALL HEIGHT IN/CM	DRINKING HEIGHT IN/CM	SHIPPING WEIGHT LBS/KG	HEAT (CF=CONSTANT FLOW)	CAPACITY GAL/LITER	HERD CAPACITY
Thrifty King CT2	16299	42.8/109	24/61	25/64	19/48	90/41	Opt Imm & Self-Reg Heat Cbl	28/106	100 Beef

*For Thrifty King energy free requirements, visit the Thrifty King series at RitchieFount.com



OmniFount 5

The OmniFount 5 is a double sided livestock waterer. Designed with animal safety in mind, featuring smooth rounded edges and a fully insulated casing for energy efficiency. The stainless steel trough features thermostatically controlled heat elements that are attached to the underside for frost free service. The OmniFount 5 is designed for larger herds with it's fast refill valve.

- Large side access panel for easy access to waterline and heat elements
- Heating elements are located directly under the stainless steel trough for exceptional performance while cable heater provides extra valve and supply line protection
- Minimal assembly required & ready to attach to your water & electric lines
- Accommodates the lower trough option, Omni Combination Conversion
- Ideal for a fence line application
- UL/CUL approved

MODEL	PART #	LENGTH IN/CM	WIDTH IN/CM	OVERALL HEIGHT IN/CM	DRINKING HEIGHT IN/CM	SHIPPING WEIGHT LBS/KG	HEAT (CF=CONSTANT FLOW)	WATTS (AMPS)	CAPACITY GAL/LITER	HERD CAPACITY
OmniFount 5	16533	40/102	23.5/60	33/84	26/66	92/42	Std Electric	548W (4.6A@120V)	16/61	150 beef



**13"
Drinking
Height**



Removable for access to waterline and heaters



Immersion Heater freeze protection (sold separately)

Omni Combination Conversion

Upgrade your OmniFount 5 or OmniFount 10 with a lower drinking option. The Omni Combination Conversion provides an easy way to add a lower trough to your already existing OmniFount 5 and OmniFount 10 (pg 10) waterer. Featuring smooth rounded corners, insulated casing and the same durable construction found in all of our waterers, the Omni Combination Conversion is ideal for calves, sheep and other small animals. Sized to replace the access panel in existing installed OmniFount 5 and OmniFount 10 units, the Omni Combination conversion is also easy to install. **Note - Not intended for use with swine.**

- Smooth rounded corners for animal safety
- Easy to install & remove for maintenance & access to waterline & heaters
- Low to the ground with 13" drinking height
- Ideal for calves and other small animals
- Immersion Heater freeze protection available for cold climates (part number 16311, sold separately)
- Durable deep trough for reliable water supply
- Easily replace the access panel on an Omni 5 (above) and Omni 10 (pg 10)

CattleMaster 480

CattleMaster fountains feature thermostatically controlled heat along it's stainless steel trough for ice-free operation and with Ritchie's fast refill valve will satisfy your herd's hydration needs in any climate. The casing of the CattleMaster 480 is made from Ritchie's heavy-duty, impact resistant, heavily insulated polyethylene construction for energy efficiency and employs UV inhibitors for extended life.

- Easy to maintain and clean
- Large access panels for easy access to heating components and waterline
- Heating elements are located directly under the stainless trough for exceptional performance while cable heater provides extra valve and supply line protection
- Unique water seal technology keeps cold air away from valve
- UL/CUL approved



MODEL	PART #	LENGTH IN/CM	WIDTH IN/CM	OVERALL HEIGHT IN/CM	DRINKING HEIGHT IN/CM	SHIPPING WEIGHT LBS/KG	HEAT (CF=CONSTANT FLOW)	WATTS (AMPS)	CAPACITY GAL/LITER	HERD CAPACITY
CattleMaster 480	18248	51/129.5	23.5/59.7	24/61	16/41	90/41	Std Electric/CF	548W (4.6A@120V)	20/76	200 beef

Thrifty King CT4-2000

The CT4 insulates the water so well that you can make it through the winter without supplying heat in many areas and it takes little electricity in those areas where the winter is severe or when energy free requirements* are not met. The water is completely surrounded by fully insulated, durable plastic – including an insulated elliptical enclosure covering the drink areas keeping the water cooler in summer and reduces loss of water due to evaporation. Optional summer cover available and unit is ideal for fenceline or stand-alone application.

- Drinking well ThermalEqualizer design eliminates cold spots in water storage and protects the high capacity valve
- Elliptical closures tip easily so animals can drink without resistance, unlike round balls which take a great deal of pressure
- Optional electric heat, Immersion Heater and Self-Regulating Heat Cable (sold separately)



MODEL	PART #	LENGTH IN/CM	WIDTH IN/CM	OVERALL HEIGHT IN/CM	DRINKING HEIGHT IN/CM	SHIPPING WEIGHT LBS/KG	HEAT (CF=CONSTANT FLOW)	CAPACITY GAL/LITER	HERD CAPACITY
Thrifty King CT4	16430	43/109	35/89	25/64	19/48	123/56	Opt Imm & Self-Reg Heat Cable	45.5/172	200 Beef

WaterMaster 54

A popular choice in feedlots, pastures, and dairies all across North America. The WaterMaster 54 features a heavy-duty one-piece, fully insulated, polyethylene body that holds up even under the weight of cattle hooves. The trough slopes to a large drain, and can be emptied, cleaned, and refilled in a fraction of the time other waterers take to empty. WaterMaster requires 75% less energy in the winter than concrete units and won't pit or cause cleaning problems. Features a wide trough for split fence access and standard constant flow option.

- Water seal keeps cold air away from valve
- Finger lift service cover: no tools, springs, or clips
- Fastest valve in the industry, allows lower storage volume for fresher water
- Built for rugged feedlot and pasture conditions
- Immersion Heater and Self-Regulating Heat Cable for freezing conditions (sold separately)



MODEL	PART #	LENGTH IN/CM	WIDTH IN/CM	OVERALL HEIGHT IN/CM	DRINKING HEIGHT IN/CM	SHIPPING WEIGHT LBS/KG	HEAT (CF=CONSTANT FLOW)	CAPACITY GAL/LITER	HERD CAPACITY
WaterMaster 54	16542	54/137	33/84	28/71	22/56	125/57	CF Std/Opt Imm & Self-Reg Heat Cbl	18/68	200 beef

WaterMaster 54 Deep

The WaterMaster 54D is a 4.5 foot long, wide and deep trough, automatic livestock waterer with a large access area to drink. Built with cattle producers in mind to handle large herds. The WaterMaster 54D provides more capacity than our standard 54 with its deep trough. Features a wide trough for split fence access and standard constant flow option.

- All surfaces slope to drain for easy cleaning
- Water seal keeps cold air away from the valve
- Insulated with energy efficient polyurethane foam, providing an R-factor of R-7 per inch
- Fast refill valve provides fresh water to 200 beef
- Built for rugged feedlot and pasture conditions
- Constant flow or Immersion Heater and Self-Regulating Heat Cable for freezing conditions (sold separately)



MODEL	PART #	LENGTH IN/CM	WIDTH IN/CM	OVERALL HEIGHT IN/CM	DRINKING HEIGHT IN/CM	SHIPPING WEIGHT LBS/KG	HEAT (CF=CONSTANT FLOW)	CAPACITY GAL/LITER	HERD CAPACITY
WaterMaster 54D	18355	54/137	33/84	28/71	22/56	125/57	CF Std/Opt Imm & Self-Reg Heat Cbl	54/204	200 beef

*For Thrifty King energy free requirements, visit the Thrifty King series at RitchieFount.com

"We think conservation is a big part of being a sustainable cattle operation. To keep us in business we have to keep the land well and the cattle well. You do that by eliminating soil erosion and retaining the water in the soil as much as you can. Anytime you have an automatic waterer...anytime you can retain water on your land and let it be absorbed by the forages, that is a good thing for me.

I like the Ritchie waterers because they are durable. I like them because I don't have to work on them very often. Being a busy person, I don't like to have to stop to work on waterers. They work when you turn them on and the cattle drink from them and they last. I do not worry about the waterers and don't remember any of my Ritchie waterers freezing up.

My cattle are more likely to drink out of a clean Ritchie waterer because of taste and the quality of water. Clean water makes a difference in the life of any animal."

Glenn Rowe

Lorimor, IA

Iowa Cattlemen's Association Hall of Fame

Iowa Cattlemen's Association Environmental Stewardship award Recipient 2015



Ritchie is a Proud member of:



OmniFount 10

Designed with animal safety in mind, the OmniFount 10 features smooth rounded edges, a fully insulated casing for energy efficiency and an all-around drink surface. The stainless steel trough has thermostatically controlled heat elements that are attached to the underside for frost free service even under the most severe winter conditions. The OmniFount 10 is designed for larger herds with its fast refill valve.

- Easy to maintain and clean
- Large access panels for easy access to heating components and waterline
- Heating elements are located directly under the stainless trough for exceptional performance while cable heater provides extra valve and supply line protection
- Unique water seal technology keeps cold air away from valve
- Accommodates the lower trough option, Omni Combination Conversion (pg 8)

MODEL	PART #	LENGTH IN/CM	WIDTH IN/CM	OVERALL HEIGHT IN/CM	DRINKING HEIGHT IN/CM	SHIPPING WEIGHT LBS/KG	HEAT (CF=CONSTANT FLOW)	WATTS (AMPS)	CAPACITY GAL/LITER	HERD CAPACITY
OmniFount 10	18460	40.5/103	40.5/103	32/80	26/66	150/68	Std Electric	1048W (8.7A@120V)	28/106	275 Beef



WaterMatic 1000

The WaterMatic 1000 features an all-around drink surface and is fully insulated and impact resistant to your larger herds. The insulation keeps the water cool in the summer and provides added protection during the winter. The drop in cover is easy to lift for maintenance and cleaning. Drain plugs can be moved to the valve chamber opening for short-term trough shut-off during cleaning, when the pen is empty or during excessively cold nights. Low capacity and fast refill valve allows for low water waste and fresh water on demand.

- Large side access panel for easy maintenance and access to waterline and electric service for heating elements
- All surfaces slope to drains for easy clean out and debris removal
- One piece rugged fountain body with no gaskets to crack, tear or leak
- Immersion Heater and Self-Regulating Heat Cable for freezing conditions (sold separately)

MODEL	PART #	LENGTH IN/CM	WIDTH IN/CM	OVERALL HEIGHT IN/CM	DRINKING HEIGHT IN/CM	SHIPPING WEIGHT LBS/KG	HEAT (CF=CONSTANT FLOW)	CAPACITY GAL/LITER	HERD CAPACITY
WaterMatic 1000	18110	42/107	42/107	32/81	26/66	129/59	Opt Imm & Self-Reg Heat Cable	22/83	275 beef

WaterMaster 600

The trough slopes to a large drain, and can be emptied, cleaned, and refilled in a fraction of the time other waterers take to empty. WaterMaster requires 75% less energy in the winter than concrete units and won't pit or cause cleaning problems. WaterMaster 600 is a 6 foot long automatic livestock waterer featuring a narrow deep trough, making it ideal for use in crossovers and alleyways. Constant flow feature optional (kit sold separately).

- No gaskets to crack, tear or leak
- One piece rugged fountain body holds up even under the weight of cattle
- Generous side access panel
- Easy to clean and maintain as all surfaces slope to drain plugs
- Fastest valve in the industry, allows lower storage volume for fresher water
- Immersion Heater and Self-Regulating Heat Cable for freezing conditions (sold separately) Constant Flow optional



MODEL	PART #	LENGTH IN/CM	WIDTH IN/CM	OVERALL HEIGHT IN/CM	DRINKING HEIGHT IN/CM	SHIPPING WEIGHT LBS/KG	HEAT (CF=CONSTANT FLOW)	CAPACITY GAL/LITER	HERD CAPACITY
WaterMaster 600	18171	72/183	24/61	28.5/72	24/61	132/60	CF Opt/Opt Imm & Self-Reg Heat Cbl	18/68	250 beef

WaterMaster 90

The WaterMaster 90 is a 7.5 foot long, wide trough, automatic livestock waterer with long access to drink. Built with cattle producers in mind to handle large herds. Waters up to 300 beef cattle with it's heavy-duty one-piece polyethylene body that holds up even under the weight of cattle hooves. The wider trough allows for fence line or stand-alone applications.

- Fastest valve in the industry, allows lower storage volume for fresher water
- Winter protection included the standard constant flow or add heat with the Immersion Heater and Self-Regulating Heat Cable. (sold separately)
- Insulated with energy efficient polyurethane foam, providing an R-factor of R-7 per inch
- Finger lift service cover: no tools, springs or clips
- Easy to clean as all surface slope to drain for water and debris removal



MODEL	PART #	LENGTH IN/CM	WIDTH IN/CM	OVERALL HEIGHT IN/CM	DRINKING HEIGHT IN/CM	SHIPPING WEIGHT LBS/KG	HEAT (CF=CONSTANT FLOW)	CAPACITY GAL/LITER	HERD CAPACITY
WaterMaster 90	16467	90/229	33/84	28/71	22/56	182/83	CF Std/Opt Imm & Self-Reg Heat Cbl	30/114	300 beef

WaterMaster 96

The WaterMaster 96 features a heavy-duty one-piece, fully insulated, polyethylene body that holds up even under the weight of cattle hooves. The trough slopes to a large drain, and can be emptied, cleaned, and refilled in a fraction of the time other waterers take to empty. WaterMaster requires 75% less energy in the winter than concrete units and won't pit or cause cleaning problems. WaterMaster 96 provides the most water capacity in our WaterMaster series when more reserve is required for low flow applications.

- The wide trough allows for split fence access
- Water seal keeps cold air away from valve
- 8 foot long deep trough automatic livestock waterer with long access to drink while trough width allows for split fence access
- Immersion Heater and Self-Regulating Heat Cable available for additional winter protection (sold separately)



MODEL	PART #	LENGTH IN/CM	WIDTH IN/CM	OVERALL HEIGHT IN/CM	DRINKING HEIGHT IN/CM	SHIPPING WEIGHT LBS/KG	HEAT (CF=CONSTANT FLOW)	CAPACITY GAL/LITER	HERD CAPACITY
WaterMaster 96	18007	96/244	33/84	28/71	22/56	210/95	CF Std/Opt Imm & Self-Reg Heat Cbl	75/284	300 beef



Thrifty King CT6

The CT6 insulates the water so well that you can make it through the winter without supplying heat in many areas and it takes little electricity in those areas where the winter is severe or when energy free requirements* are not met. The water is completely surrounded by fully insulated durable plastic – including an insulated elliptical enclosure covering the drink areas keeping the water cooler in summer and reduces loss of water due to evaporation. Summer cover standard.

- ThermalEqualizer design drinking well eliminates cold spots in water storage and protect the high capacity valve
- Elliptical closures tip easily so animals can drink without resistance, unlike round balls which take a great deal of pressure
- Six hole waterer is ideal for fence line or stand-alone application
- Optional electric heat, Immersion Heater and Self-Regulating Heat Cable (sold separately)

MODEL	PART #	LENGTH IN/CM	WIDTH IN/CM	OVERALL HEIGHT IN/CM	DRINKING HEIGHT IN/CM	SHIPPING WEIGHT LBS/KG	HEAT (CF=CONSTANT FLOW)	CAPACITY GAL/LITER	HERD CAPACITY
Thrifty King CT6	16440	72.5/184	39/99	25/64	19/48	210/95	Opt Imm & Self-Reg Heat Cbl	55/208	300 beef

CattleMaster 840

CattleMaster fountains provide the best of both worlds: blending technology from traditional stainless steel units and the newest poly units, to provide a premier livestock waterer. The CattleMaster 840 features thermostatically controlled heat for ice-free operation and Ritchie's fast refill valve, CattleMaster fountains will satisfy your herd's hydration needs in any climate. The casing of the CattleMaster 840 is made from Ritchie's heavy-duty, impact resistant construction.

- Unique water seal technology keeps cold air away from valve
- Trough and hardware is 304 stainless steel for durability and long life
- The roto-molded construction is heavily insulated for energy efficiency and employs UV inhibitors for long extended life
- Overall heat coverage for frost-free service
- Trough is 304 stainless steel for long life
- UL/CUL approved

MODEL	PART #	LENGTH IN/CM	WIDTH IN/CM	OVERALL HEIGHT IN/CM	DRINKING HEIGHT IN/CM	SHIPPING WEIGHT LBS/KG	HEAT (CF=CONSTANT FLOW)	WATTS (AMPS)	CAPACITY GAL/LITER	HERD CAPACITY
CattleMaster 840	18235	86/218.4	23.5/59.7	24/61	16/41	123/56	Std Electric/CF	1048W (8.7A@120V)	35/133	300 beef

*For Thrifty King energy free requirements, visit the Thrifty King series at RitchieFount.com



All Ritchie and Classic Equine by Ritchie fountains carry a ten-year warranty. On poly units, this is five years full warranty, with a prorated (20% per year) warranty the last five years. Steel products carry a 10 year, 100% warranty on stainless troughs against manufacturing defects and corrosion; one year full and nine years prorated on casing and cover. Valves and heaters are warranted for one year from the date of purchase.

To learn more about the 10-year Ritchie warranty visit ritchiefount.com/warranty-info

Ritchie is proud member of the National Cattlemen's Beef Association Allied Industry Council

Join our community



CattleMaster 10T

Featuring thermostatically controlled heat for ice-free operation and Ritchie's fast refill valve, CattleMaster fountains will satisfy your herd's hydration needs in any climate. The casing of the CattleMaster 10T offers a taller drink height and is made from Ritchie's heavy-duty, impact resistant polyethylene construction. The roto-molded construction is heavily insulated for energy efficiency and employs UV inhibitors for extended life.

- No gaskets to crack, tear or leak
- UL/CUL approved
- Generous side access panels
- Electric heat standard; attached directly under the trough for maximum performance
- Fully adjustable thermostat, cable heater provides extra valve protection
- Trough and hardware are 304 stainless steel for durability and long life

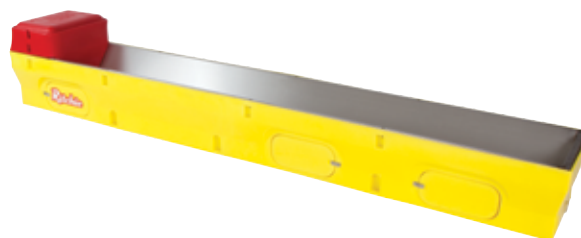


MODEL	PART #	LENGTH IN/CM	WIDTH IN/CM	OVERALL HEIGHT IN/CM	DRINKING HEIGHT IN/CM	SHIPPING WEIGHT LBS/KG	HEAT (CF=CONSTANT FLOW)	WATTS (AMPS)	CAPACITY GAL/LITER	HERD CAPACITY
CattleMaster 10T	18700	120/305	32/81	33/84	25/64	235/107	Std Electric/CF	1048W (8.7A@120V)	50/189	400 beef

CattleMaster 1440

CattleMasters combine the technology from our traditional stainless steel units and the newest poly units, to provide a premier livestock waterer. Thermostatically controlled heat for ice-free service and Ritchie's fast refill valve, the 1440 will satisfy your herd's hydration needs in any climate. The impact resistant casing is heavily insulated for energy efficiency & employs UV inhibitors for extended life.

- Large access panels for easy access to heating components and waterline
- Heating elements are located directly under the stainless trough for exceptional performance while cable heater provides extra valve and supply line protection
- Casing is impact resistant and insulated with energy efficient polyurethane foam, providing an R-factor of R-7 per inch
- Fast refill valve provides fresh water on demand
- UL/CUL approved



MODEL	PART #	LENGTH IN/CM	WIDTH IN/CM	OVERALL HEIGHT IN/CM	DRINKING HEIGHT IN/CM	SHIPPING WEIGHT LBS/KG	HEAT (CF=CONSTANT FLOW)	WATTS (AMPS)	CAPACITY GAL/LITER	HERD CAPACITY
CattleMaster 1440	18252	146/370	24/60	24/61	16/41	186/84	Std Electric/CF	1298W (10.9A@120V)	60/227	475 Beef

WaterMaster 1200

A popular choice in dairies, feedlots, and pastures all across North America, the WaterMaster Series features a heavy-duty one-piece polyethylene body that holds up even under the weight of cattle hooves. The trough slopes to each large drain, and can be emptied, cleaned, and refilled in a fraction of the time other waterers take to empty. WaterMaster requires 75% less energy in the winter than concrete units and won't pit or cause cleaning problems.

- Built for rugged feedlot and pasture conditions
- Fastest valve in the industry, allows lower storage volume for fresher water
- Optional Immersion heater and supply line heater available for winter protection. (sold separately) Constant flow optional and sold separately
- Casing is impact resistant and insulated for energy efficiency



MODEL	PART #	LENGTH IN/CM	WIDTH IN/CM	OVERALL HEIGHT IN/CM	DRINKING HEIGHT IN/CM	SHIPPING WEIGHT LBS/KG	HEAT (CF=CONSTANT FLOW)	CAPACITY GAL/LITER	HERD CAPACITY
WaterMaster 1200	18053	144/366	24/61	29/72	24/61	265/120	CF Opt/Opt Imm & Self-Reg Heat Cbl	60/227	500 Beef

**YOU NEVER STOP IMPROVING
HOW YOU OPERATE...
NEITHER DOES RITCHIE.**



Your dairy herd is more productive when fully hydrated, and that's more likely when they have constant access to clean fresh water.

Ritchie waterers are constructed to perform well and take a beating. Not only are they tough, but they are designed to keep working no matter the conditions. Fresh water on demand is also critical to the health of your herd, make sure it's always available when you rely on Ritchie waterers.

For more information visit www.ritchiefount.com

All Ritchie waterers meet Grade A Dairy Recommendations

**Ritchie is proud to be a partner to the
American Dairymen since 1921**

Join our community



WaterMatic 100

The WaterMatic 100 is a single sided automatic waterer for small dairy herds. Ideal for stalls, small pens or paddocks. The drop in cover is easy to lift for maintenance and cleaning. Trough slopes towards drain hole for easy cleaning and debris removal. Optional heat required for winter use.

- No gaskets to crack, tear or leak
- One piece rugged fountain body
- Generous side access panel
- Easy to clean and maintain
- All surfaces slope to drains for easy clean out
- Ideal for individual stalls or pens
- Immersion Heater and Self-Regulating Heat Cable for freezing conditions (sold separately)

MODEL	PART #	LENGTH IN/CM	WIDTH IN/CM	OVERALL HEIGHT IN/CM	DRINKING HEIGHT IN/CM	SHIPPING WEIGHT LBS/KG	HEAT (CF=CONSTANT FLOW)	CAPACITY GAL/LITER	HERD CAPACITY
WaterMatic 100	18165	24.5/62	14/36	23.5/60	18/46	38/17	Opt Imm & Self-Reg Heat Cable	2.8/11	10 dairy

OmniFount 1

Designed with animal safety in mind, the OmniFount 1 features smooth rounded edges and a fully insulated casing for energy efficiency. The stainless steel trough features thermostatically controlled heat elements that are attached to the underside for frost free service even under the most severe winter conditions. The OmniFount 1's single trough has a fast refill valve.

- Easy to maintain and clean
- Large access panel for ease in maintenance
- Heating elements are located directly under the stainless steel trough for exceptional performance and overall heat coverage
- Cable heater provides extra valve and supply line protection
- Durable insulated with energy efficient polyurethane foam
- OmniFount unit comes complete and ready to install
- UL/CUL approved



MODEL	PART #	LENGTH IN/CM	WIDTH IN/CM	OVERALL HEIGHT IN/CM	DRINKING HEIGHT IN/CM	SHIPPING WEIGHT LBS/KG	HEAT (CF=CONSTANT FLOW)	WATTS (AMPS)	CAPACITY GAL/LITER	HERD CAPACITY
OmniFount 1	18359	20/51	14.5/37	25/64	18/46	39/18	Std Electric	173W (1.4A@120V)	1.5/6	10 dairy

WaterMatic 150

The WaterMatic 150 is ideal for fence line applications with its small compact two-trough design. The waterer is fully insulated to keep the water cool in the summer and provides added protection during the winter. The drop in cover is easy to lift for maintenance and cleaning. Trough slopes towards drain holes for easy cleaning and debris removal.

- No gaskets to crack, tear or leak
- One piece rugged fountain body
- Generous side access panel
- Easy to clean and maintain
- All surfaces slope to drains for easy clean out
- Ideal for a fence line application
- Immersion Heater and Self-Regulating Heat Cable for freezing conditions (sold separately)



MODEL	PART #	LENGTH IN/CM	WIDTH IN/CM	OVERALL HEIGHT IN/CM	DRINKING HEIGHT IN/CM	SHIPPING WEIGHT LBS/KG	HEAT (CF=CONSTANT FLOW)	CAPACITY GAL/LITER	HERD CAPACITY
WaterMatic 150	18166	33.5/85	14/36	23.5/60	18/46	50/23	Opt Imm & Self-Reg Heat Cable	4.2/16	20 dairy

OmniFount 2

The OmniFount 2 is a double sided automatic waterer for dairy. Ideally used when splitting a fence for small pens and paddocks. The stainless steel trough features thermostatically controlled heat elements that are attached to the underside for frost free service even under the most severe winter conditions.

- Easy to maintain and clean
- Large access panel for easy access to heating components and waterline
- Heating elements are located directly under the stainless trough for exceptional performance while cable heater provides extra valve and supply line protection
- Insulated with energy efficient polyurethane foam
- OmniFount unit comes complete and ready to install to your electric and waterlines
- UL/CUL approved



MODEL	PART #	LENGTH IN/CM	WIDTH IN/CM	OVERALL HEIGHT IN/CM	DRINKING HEIGHT IN/CM	SHIPPING WEIGHT LBS/KG	HEAT (CF=CONSTANT FLOW)	WATTS (AMPS)	CAPACITY GAL/LITER	HERD CAPACITY
OmniFount 2	16619	28.3/72	14.5/37	25/64	18/46	45/20	Std Electric	298W (2.5A@120V)	2.2/8	20 Dairy



OmniFount 3

Designed with animal safety in mind, the OmniFount 3 features smooth rounded edges and a fully insulated casing for energy efficiency. The stainless steel trough features thermostatically controlled heat elements that are attached to the underside for frost free service even under the most severe winter conditions. Easy to maintain and clean.

- Large access panel for easy access to heating components and waterline
- Heating elements are located directly under the stainless trough for exceptional performance while cable heater provides extra valve and supply line protection
- Insulated with energy efficient polyurethane foam, providing an R-factor of R-7 per inch
- Industry leading fast refill valve provides fresh water to 50 dairy
- UL/CUL approved.

MODEL	PART #	LENGTH IN/CM	WIDTH IN/CM	OVERALL HEIGHT IN/CM	DRINKING HEIGHT IN/CM	SHIPPING WEIGHT LBS/KG	HEAT (CF=CONSTANT FLOW)	WATTS (AMPS)	CAPACITY GAL/LITER	HERD CAPACITY
OmniFount 3	18270	31.5/80	22/56	33/84	26/66	77/35	Std Electric	548W (4.6A@120V)	10/38	50 Dairy



WaterMatic 300

The WaterMatic 300 is ideal for fence line applications with its two trough design. The waterer is fully insulated and impact resistant to your larger herds. The insulation keeps the water cool in the summer and provides added protection during the winter. The drop in cover is easy to lift for maintenance and cleaning. Trough slopes towards drain holes for easy cleaning and debris removal. Drain plugs can be moved to the valve chamber opening for short-term trough shut-off during cleaning, when the pen is empty or during excessively cold nights.

- No gaskets to crack, tear or leak
- One piece rugged fountain body
- Generous side access panel for easy maintenance
- All surfaces slope to drains for easy clean out
- Immersion Heater and Self-Regulating Heat Cable for freezing conditions (sold separately)

MODEL	PART #	LENGTH IN/CM	WIDTH IN/CM	OVERALL HEIGHT IN/CM	DRINKING HEIGHT IN/CM	SHIPPING WEIGHT LBS/KG	HEAT (CF=CONSTANT FLOW)	CAPACITY GAL/LITER	HERD CAPACITY
WaterMatic 300	18050	36/91	21.5/55	31/79	26/66	71/32	Opt Imm & Self-Reg Heat Cable	8.2/31	60 Dairy



OmniFount 5

The OmniFount 5 is a double sided automatic livestock waterer. Designed with animal safety in mind, the unit features smooth rounded edges and a fully insulated casing for energy efficiency. The stainless steel trough features thermostatically controlled heat elements for frost free service even under the most severe winter conditions. The OmniFount 5 is designed for larger herds and it's fast refill valve will provide fresh water to a maximum herd size of 75 head.

- Large side access panel for easy access to waterline and heat elements
- Heating elements are located directly under the stainless steel trough for exceptional performance while cable heater provides extra valve and supply line protection
- Minimal assembly required to attach to your water & electric lines
- Drain for easy cleanout
- UL/CUL approved

MODEL	PART #	LENGTH IN/CM	WIDTH IN/CM	OVERALL HEIGHT IN/CM	DRINKING HEIGHT IN/CM	SHIPPING WEIGHT LBS/KG	HEAT (CF=CONSTANT FLOW)	WATTS (AMPS)	CAPACITY GAL/LITER	HERD CAPACITY
OmniFount 5	16533	40/102	23.5/60	33/84	26/66	92/42	Std Electric	548W (4.6A@120V)	16/61	75 Dairy

CattleMaster 480

CattleMaster fountains feature thermostatically controlled heat along its stainless steel trough for ice-free operation and Ritchie's fast refill valve will satisfy your herd's hydration needs in any climate. The casing of the CattleMaster 480 is made from Ritchie's heavy-duty, impact resistant, heavily insulated polyethylene construction for energy efficiency and employs UV inhibitors for extended life.

- Easy to maintain and clean
- Large access panels for easy access to heating components and waterline
- Heating elements are located directly under the stainless trough for exceptional performance while cable heater provides extra valve and supply line protection
- Unique water seal technology keeps cold air away from valve
- UL/CUL approved



MODEL	PART #	LENGTH IN/CM	WIDTH IN/CM	OVERALL HEIGHT IN/CM	DRINKING HEIGHT IN/CM	SHIPPING WEIGHT LBS/KG	HEAT (CF=CONSTANT FLOW)	WATTS (AMPS)	CAPACITY GAL/LITER	HERD CAPACITY
CattleMaster 480	18248	51/129.5	23.5/59.7	24/61	16/41	90/41	Std Electric/CF	548W (4.6A@120V)	20/76	100 dairy

WaterMaster 54

A popular choice in feedlots, pastures, and dairies all across North America, the WaterMaster Series features a heavy-duty, one-piece, fully insulated, polyethylene body that holds up even under the weight of cattle hooves. The trough slopes to a large drain, and can be emptied, cleaned, and refilled in a fraction of the time other waterers take to empty. WaterMaster requires 75% less energy in the winter than concrete units and won't pit or cause cleaning problems. Features a wide trough for split fence access and standard constant flow option.

- Water seal keeps cold air away from valve
- Finger lift service cover: no tools, springs, or clips
- Fastest valve in the industry, allows lower storage volume for fresher water
- Built for rugged feedlot and pasture conditions
- Immersion Heater and Self-Regulating Heat Cable for freezing conditions (sold separately)



MODEL	PART #	LENGTH IN/CM	WIDTH IN/CM	OVERALL HEIGHT IN/CM	DRINKING HEIGHT IN/CM	SHIPPING WEIGHT LBS/KG	HEAT (CF=CONSTANT FLOW)	CAPACITY GAL/LITER	HERD CAPACITY
WaterMaster 54	16542	54/137	33/84	28/71	22/56	125/57	CF Std/Opt Imm & Self-Reg Heat Cbl	18/68	100 dairy

WaterMaster 54 Deep

The WaterMaster 54D is a 4.5 foot long, wide and deep trough, automatic livestock waterer with a large access area to drink. Built with cattle producers in mind to handle large herds. The WaterMaster 54D provides more capacity than our standard 54 with its deep trough. Features a wide trough for split fence access and standard constant flow option.

- All surfaces slope to drain for easy cleaning
- Water seal keeps cold air away from the valve
- Insulated with energy efficient polyurethane foam, providing an R-factor of R-7 per inch
- Fast refill valve provides fresh water to 100 dairy
- Built for rugged feedlot and pasture conditions
- Constant flow standard or Immersion Heater and Self-Regulating Heat Cable (sold separately) for freezing conditions



MODEL	PART #	LENGTH IN/CM	WIDTH IN/CM	OVERALL HEIGHT IN/CM	DRINKING HEIGHT IN/CM	SHIPPING WEIGHT LBS/KG	HEAT (CF=CONSTANT FLOW)	CAPACITY GAL/LITER	HERD CAPACITY
WaterMaster 54D	18355	54/137	33/84	28/71	22/56	125/57	CF Std/Opt Imm & Self-Reg Heat Cbl	54/204	100 dairy



WaterMaster 600

The trough slopes to a large drain, and can be emptied, cleaned, and refilled in a fraction of the time other waterers take to empty. WaterMaster requires 75% less energy in the winter than concrete units and won't pit or cause cleaning problems. WaterMaster 600 is a 6 foot long automatic livestock waterer featuring a narrow deep trough, making it ideal for use in crossovers and alleyways. Constant flow feature optional (kit sold separately).

- No gaskets to crack, tear or leak
- One piece rugged fountain body holds up even under the weight of cattle
- Generous side access panel
- Easy to clean and maintain as all surfaces slope to drain plugs
- Fastest valve in the industry, allows lower storage volume for fresher water
- Immersion Heater and Self-Regulating Heat Cable for freezing conditions (sold separately)

MODEL	PART #	LENGTH IN/CM	WIDTH IN/CM	OVERALL HEIGHT IN/CM	DRINKING HEIGHT IN/CM	SHIPPING WEIGHT LBS/KG	HEAT (CF=CONSTANT FLOW)	CAPACITY GAL/LITER	HERD CAPACITY
WaterMaster 600	18171	72/183	24/61	28.5/72	24/61	132/60	CF Opt/Opt Imm & Self-Reg Heat Cbl	28/106	125 dairy



WaterMatic 1000

The WaterMatic 1000 features an all-around drink surface and is fully insulated and impact resistant to your larger herds. The insulation keeps the water cool in the summer and provides added protection during the winter. The drop in cover is easy to lift for maintenance and cleaning. Drain plugs can be moved to the valve chamber opening for short-term trough shut-off during cleaning, when the pen is empty or during excessively cold nights. Low capacity and fast refill valve allows for low water waste and fresh water on demand.

- Large side access panel for easy maintenance and access to waterline and electric service for heating elements
- All surfaces slope to drains for easy clean out and debris removal
- One piece rugged fountain body with no gaskets to crack, tear or leak
- Immersion Heater and Self-Regulating Heat Cable for freezing conditions (sold separately)

MODEL	PART #	LENGTH IN/CM	WIDTH IN/CM	OVERALL HEIGHT IN/CM	DRINKING HEIGHT IN/CM	SHIPPING WEIGHT LBS/KG	HEAT (CF=CONSTANT FLOW)	CAPACITY GAL/LITER	HERD CAPACITY
WaterMatic 1000	18110	42/107	42/107	32/81	26/66	129/59	Opt Imm & Self-Reg Heat Cbl	22/83	135 Dairy



OmniFount 10

Designed with animal safety in mind, the OmniFount 10 features smooth rounded edges, a fully insulated casing for energy efficiency and an all-around drink surface. The stainless steel trough features thermostatically controlled heat elements that are attached to the underside for frost free service even under the most severe winter conditions. The larger OmniFount 10 is designed for larger herds and its fast refill valve will provide fresh water to 135 dairy.

- Easy to maintain and clean
- Large access panels for easy access to heating components and waterline
- Heating elements are located directly under the stainless trough for exceptional performance while cable heater provides extra valve and supply line protection
- Unique water seal technology keeps cold air away from valve
- UL/CUL approved

MODEL	PART #	LENGTH IN/CM	WIDTH IN/CM	OVERALL HEIGHT IN/CM	DRINKING HEIGHT IN/CM	SHIPPING WEIGHT LBS/KG	HEAT (CF=CONSTANT FLOW)	WATTS (AMPS)	CAPACITY GAL/LITER	HERD CAPACITY
OmniFount 10	18460	40.5/103	40.5/103	32/80	26/66	150/68	Std Electric	1048W (8.7A@120V)	28/106	135 dairy

WaterMaster 90

The WaterMaster 90 is a 7.5 foot long, wide trough, automatic livestock waterer with a large access area to drink. Built with cattle producers in mind to handle large herds. Waters up to 150 dairy cattle with it's heavy-duty, one-piece polyethylene body that holds up even under the weight of cattle hooves. The wider trough allows for fence line or stand-alone applications.

- Fastest valve in the industry, allows lower storage volume for fresher water
- Winter protection includes the standard constant flow or add heat with the Immersion Heater and Self-Regulating Heat Cable (sold separately)
- Insulated with energy efficient polyurethane foam, providing an R-factor of R-7 per inch
- Finger lift service cover: no tools, springs or clips
- Easy to clean as all surfaces slope to drain for water and debris removal



MODEL	PART #	LENGTH IN/CM	WIDTH IN/CM	OVERALL HEIGHT IN/CM	DRINKING HEIGHT IN/CM	SHIPPING WEIGHT LBS/KG	HEAT (CF=CONSTANT FLOW)	CAPACITY GAL/LITER	HERD CAPACITY
WaterMaster 90	16467	90/229	33/84	28/71	22/56	182/83	CF Std/Opt Imm & Self-Reg Heat Cbl	30/114	150 dairy

WaterMaster 96

The WaterMaster 96 features a heavy-duty, one-piece, fully insulated, polyethylene body that holds up even under the weight of cattle hooves. The trough slopes to a large drain, and can be emptied, cleaned, and refilled in a fraction of the time other waterers take to empty. WaterMaster requires 75% less energy in the winter than concrete units and won't pit or cause cleaning problems. WaterMaster 96 provides the most water capacity in our WaterMaster series when more reserve is required for low flow applications.

- The wide trough allows for split fence access and the constant flow option is standard
- Water seal keeps cold air away from valve
- 8 foot long deep trough automatic livestock waterer with long access to drink while trough width allows for split fence access
- Immersion Heater and Self-Regulating Heat Cable (sold separately)

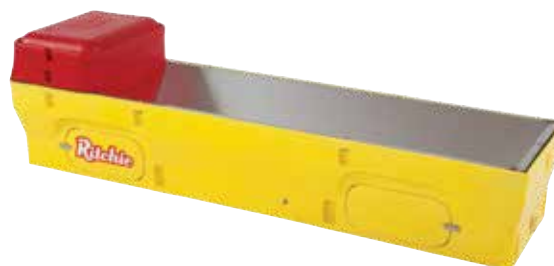


MODEL	PART #	LENGTH IN/CM	WIDTH IN/CM	OVERALL HEIGHT IN/CM	DRINKING HEIGHT IN/CM	SHIPPING WEIGHT LBS/KG	HEAT (CF=CONSTANT FLOW)	CAPACITY GAL/LITER	HERD CAPACITY
WaterMaster 96	18007	96/244	33/84	28/71	22/56	210/95	CF Std/Opt Imm & Self-Reg Heat Cbl	75/284	150 Dairy

CattleMaster 840

The CattleMaster 840 provides the best of both worlds: blending technology from traditional stainless steel units and the newest poly units, to provide a premier livestock waterer. The heat is thermostatically controlled for ice-free operation and Ritchie's fast refill valve, CattleMaster fountains will satisfy your herd's hydration needs in any climate. The casing of the CattleMaster 840 is made from Ritchie's heavy-duty, impact resistant polyethylene construction.

- Unique patented water seal technology keeps cold air away from valve
- Trough and hardware is 304 stainless steel for durability and long life
- The roto-molded construction is heavily insulated for energy efficiency and employs UV inhibitors for long extended life
- Thermostatically controlled, overall heat coverage for frost free service
- UL/CUL approved

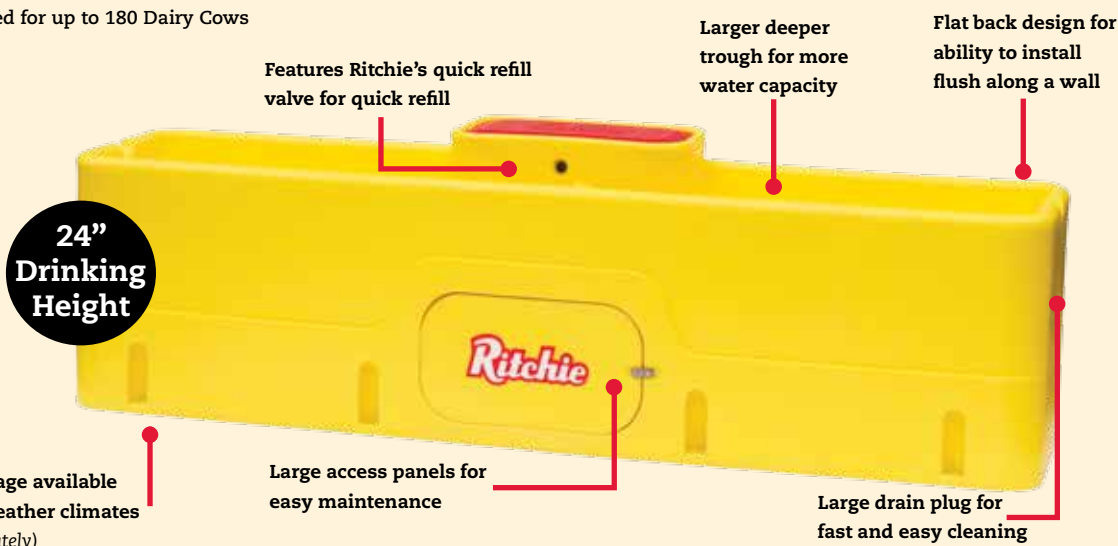


MODEL	PART #	LENGTH IN/CM	WIDTH IN/CM	OVERALL HEIGHT IN/CM	DRINKING HEIGHT IN/CM	SHIPPING WEIGHT LBS/KG	HEAT (CF=CONSTANT FLOW)	WATTS (AMPS)	CAPACITY GAL/LITER	HERD CAPACITY
CattleMaster 840	18235	86/218.4	23.5/59.7	24/61	16/41	123/56	Std Electric/CF	1048W (8.7A@120V)	35/133	150 Dairy

DairyFount 8

Designed for Dairies with input from Dairy producers. Using over 95 years of watering experience, the latest technology and input from Dairy Producers, we have designed a waterer that will suit your dairy's needs, the DairyFount 8. Featuring a heavy-duty one-piece, fully insulated polyethylene body that holds up even under the weight of cows. The trough slopes to large drains, and can be emptied, cleaned and refilled in a fraction of time other waterers take to empty, helping you maintain a clean drinking environment.

- Maintain a clean environment with an easy to clean surface and drain plug in the water seal groove
- Ruggedly built for dairy operations
- Deeper trough with more water capacity, 52 gallons
- Designed to fill an entire 8' end wall in crossover alleys, no wasted space
- Straight sides to fit flush against wall
- Center valve design for easy install on either side of alleyways
- 3" drain plug at each end for fast easy cleaning
- Designed for up to 180 Dairy Cows



MODEL	PART #	LENGTH IN/CM	WIDTH IN/CM	OVERALL HEIGHT IN/CM	DRINKING HEIGHT IN/CM	SHIPPING WEIGHT LBS/KG	HEAT (CF=CONSTANT FLOW)	CAPACITY GAL/LITER	HERD CAPACITY
DairyFount 8	18820	96/244	24/61	27/69	24/61	155/70	Opt Imm & Self-Reg Heat Cbl	52/197	180 Dairy

CattleMaster 10T

Featuring thermostatically controlled heat for ice-free operation and Ritchie's fast refill valve, CattleMaster fountains will satisfy your herd's hydration needs in any climate. The casing of the CattleMaster 10T offers a taller drink height and is made from Ritchie's heavy-duty, impact resistant polyethylene construction. The roto-molded construction is heavily insulated for energy efficiency and employs UV inhibitors for extended life.

- No gaskets to crack, tear or leak
- UL/CUL approved
- Generous side access panels
- Electric heat standard; attached directly under the trough for maximum performance
- Fully adjustable thermostat, cable heater provides extra valve protection
- Trough and hardware are 304 stainless steel for durability and long life

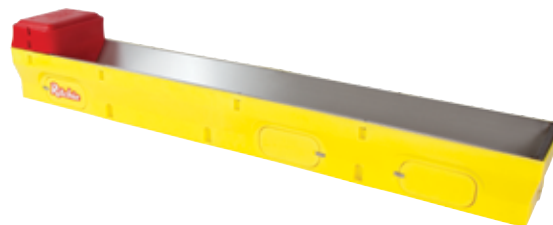


MODEL	PART #	LENGTH IN/CM	WIDTH IN/CM	OVERALL HEIGHT IN/CM	DRINKING HEIGHT IN/CM	SHIPPING WEIGHT LBS/KG	HEAT (CF=CONSTANT FLOW)	WATTS (AMPS)	CAPACITY GAL/LITER	HERD CAPACITY
CattleMaster 10T	18700	120/305	32/81.3	33/84	25/64	235/107	Std Electric/CF	1048W (8.7A@120V)	50/189	200 dairy

CattleMaster 1440

CattleMasters provide the best of both worlds: blending technology from traditional stainless steel units and the newest poly units, to provide a premier livestock waterer. Featuring thermostatically controlled heat for ice-free operation and Ritchie's fast refill valve, CattleMaster fountains will satisfy your herd's hydration needs in any climate. The roto-molded construction is heavily insulated for energy efficiency and employs UV inhibitors for extended life.

- Large access panels for easy access to heating components and waterline
- Thermostatically controlled heating elements are located directly under the stainless trough for exceptional performance while cable heater provides extra valve and supply line protection
- Casing is impact resistant and insulated with energy efficient polyurethane foam, providing an R-factor of R-7 per inch
- UL/CUL approved



MODEL	PART #	LENGTH IN/CM	WIDTH IN/CM	OVERALL HEIGHT IN/CM	DRINKING HEIGHT IN/CM	SHIPPING WEIGHT LBS/KG	HEAT (CF=CONSTANT FLOW)	WATTS (AMPS)	CAPACITY GAL/LITER	HERD CAPACITY
CattleMaster 1440	18252	146/370	24/60	24/61	16/41	186/84	Std Electric/CF	1298W (10.9A@120V)	60/227	240 Dairy

WaterMaster 1200

A popular choice in dairies, feedlots, and pastures all across North America, the WaterMaster Series features a heavy-duty, one-piece polyethylene body that holds up even under the weight of cattle hooves. The trough slopes to each large drain, and can be emptied, cleaned, and refilled in a fraction of the time other waterers take to empty. WaterMaster requires 75% less energy in the winter than concrete units and won't pit or cause cleaning problems.

- Built for rugged feedlot and pasture conditions
- Fastest valve in the industry, allows lower storage volume for fresher water
- Optional Immersion heater and supply line heater available for winter protection (sold separately) Constant flow optional and sold separately
- Casing is impact resistant and insulated for energy efficiency



MODEL	PART #	LENGTH IN/CM	WIDTH IN/CM	OVERALL HEIGHT IN/CM	DRINKING HEIGHT IN/CM	SHIPPING WEIGHT LBS/KG	HEAT (CF=CONSTANT FLOW)	CAPACITY GAL/LITER	HERD CAPACITY
WaterMaster 1200	18053	144/366	24/61	29/72	24/61	265/120	CF Opt/Opt Imm & Self-Reg Heat Cbl	60/227	250 Dairy



All Ritchie and Classic Equine by Ritchie fountains carry a ten-year warranty. On poly units, this is five years full warranty, with a prorated (20% per year) warranty the last five years. Steel products carry a 10 year, 100% warranty on stainless troughs against manufacturing defects and corrosion; one year full and nine years prorated on casing and cover. Valves and heaters are warranted for one year from the date of purchase.

To learn more about the 10-year Ritchie warranty visit ritchiefount.com/warranty-info

Ritchie is proud to be a partner to the American Dairymen since 1921

Join our community



Buckets are:

OBSOLETE:

ob•so•lete (adjective):

1. no longer in general use; fallen into disuse
2. of a discarded or outmoded type; out of date

When it comes to keeping horses healthy, nothing is more important than fresh water on demand. So why rely on hauling heavy buckets of water that can so easily run out or get stale? Step up to the new way of watering. Ritchie invented the automatic waterer in 1921, and they've been the industry leader ever since. Make watering easy on yourself and healthy for your horse.

"There's nothing I value more than dependability when it comes to ensuring my horses get the best care possible. For over a decade, Ritchie Waterers has helped me ensure my horses are happy and healthy, from my young foals and performance horses to my retired Australian Quarter Horse mare, Mindy."

Clinton Anderson
Downunder Horsemanship

Ritchie is an official sponsor of
Clinton Anderson/Downunder Horsemanship

DOWN
UNDER
HORSEMANSHIP



StallFount - Unheated

Ideal for individual stall setup, the StallFount provides clean, fresh, temperate water in a space-saving corner mounted package. Its quick refill function means no waiting for water, and better hydration for your animals. The StallFount has a stainless steel cover and hardware, along with its worry free float system, which ensures this easy to clean setup can take years of abuse from stalled horses. Quick and easy installation.

- Ideal for individual stall set-up
- Supplies fresh, clean and temperate water
- Easy to drain & clean
- Corner mounted to save space
- Quick refill function - no waiting for water
- Stainless steel cover & hardware
- 10 year warranty

MODEL	PART #	LENGTH IN/CM	WIDTH IN/CM	OVERALL HEIGHT IN/CM	DRINKING HEIGHT IN/CM	SHIPPING WEIGHT LBS/KG	HEAT (CF=CONSTANT FLOW)	CAPACITY GAL/LITER	HERD CAPACITY
StallFount	18748	16.5/41.9	16.5/41.9	12/30.5	Adjustable	20/9.1	Unheated	1/3.79	Single Stall

StallFount - Heated

Ideal for individual stall setup, the StallFount provides clean, fresh, temperate water in a space-saving corner mounted package. Its quick refill function and thermostatically controlled, overall heat means no waiting for water no matter the temperature, and better hydration for your animals. The StallFount has a stainless steel cover and hardware, along with its worry free float system, which ensures this easy to clean setup can take years of abuse from stalled horses. Quick and easy installation.

- Heated option provides access to water regardless of climate
- Supplies fresh, clean and temperate water
- Easy to drain & clean
- Corner mounted to save space and ideal for individual stall set-up
- 304 stainless steel cover & hardware
- UL/CUL approved



MODEL	PART #	LENGTH IN/CM	WIDTH IN/CM	OVERALL HEIGHT IN/CM	DRINKING HEIGHT IN/CM	SHIPPING WEIGHT LBS/KG	HEAT (CF=CONSTANT FLOW)	WATTS (AMPS)	CAPACITY GAL/LITER	HERD CAPACITY
StallFount - Heated	18740	16.5/41.9	16.5/41.9	12/30.5	Adjustable	20/9.1	Std Electric	173W (1.4A@120V)	1/3.79	Single Stall

20" StallFount Shroud

Durable, fully insulated casing designed to protect the supply line below your StallFount against freezing and animal abuse. Six lag screws ensure easy, secure installation almost anywhere. Recessed design provides a bucket rest for convenient cleaning of your StallFount. Ritchie's best, 10 year warranty.

- Provides extra protection to your waterline
- Recommended for horses 15 hands and shorter
- Fully sealed insulation providing an R-factor of R-7 per inch
- Bucket rest for easy cleaning
- Six anchor points for mounting to wall. Lag screws sold separately



MODEL	PART #	LENGTH IN/CM	WIDTH IN/CM	OVERALL HEIGHT IN/CM	DRINKING HEIGHT IN/CM	SHIPPING WEIGHT LBS/KG	HEAT (CF=CONSTANT FLOW)	CAPACITY GAL/LITER	HERD CAPACITY
20" Shroud	18744	19/48.3	7/17.8	20/50.8	32	9/4.08	NA	NA	NA

30" StallFount Shroud

Durable, fully insulated casing designed to protect the water supply line below your StallFount against freezing and animal abuse. Eight lag screws ensure easy, secure installation almost anywhere. Recessed design provides a bucket rest for convenient cleaning of your StallFount. Covered by Ritchie's best, 10-year warranty.

- Provides extra protection to your waterline
- Recommended for horses 15 hands and taller
- Fully sealed insulation providing an R-factor of R-7 per inch
- Bucket rest for easy cleaning
- Eight anchor locations for a secure application. Lag screws sold separately



MODEL	PART #	LENGTH IN/CM	WIDTH IN/CM	OVERALL HEIGHT IN/CM	DRINKING HEIGHT IN/CM	SHIPPING WEIGHT LBS/KG	HEAT (CF=CONSTANT FLOW)	CAPACITY GAL/LITER	HERD CAPACITY
30" Shroud	18746	19/48.3	7/17.8	30/76.2	42	12/5.44	NA	NA	NA



EZFont

A simple, effective, automatic replacement for your "tank and float." EZFont combines the benefits of automatic watering with the versatility of several portable or permanent mounting options. Heavy-duty polyethylene construction is strong enough to last for years and the smooth surface lends itself to easy cleaning. Easy set up in minutes, just attach a standard garden hose.

- Versatile Setup options
- Quick and Easy to Install with a worry free float system
- Easy to drain and clean
- All surfaces slope to drains for easy clean out
- Connects to a basic 200 PSI garden or washing machine hose
- ****Not intended for cold climates or for use when temperatures reach below freezing

MODEL	PART #	LENGTH IN/CM	WIDTH IN/CM	OVERALL HEIGHT IN/CM	DRINKING HEIGHT IN/CM	SHIPPING WEIGHT LBS/KG	HEAT (CF=CONSTANT FLOW)	CAPACITY GAL/LITER	HERD CAPACITY
EZFont	18710	23/58.4	20/50.8	28.5/72.5	24/61	32/14.5	NOT FOR USE IN COLD CLIMATES	3.8/14.3	20 horses



AutoFont 1

Automatic access for up to 20 head. The AutoFont has a quick refill function, which means less waiting for water, and better hydration for all your animals. AutoFont saves water by reducing waste. Hinged cover allows easy access to the fully insulated chamber. Heavy-duty polyethylene construction and worry free float system ensure years of trouble free service.

- Supplies fresh, clean and temperate water
- Easy to drain & clean
- Waters up to 20 head
- Accommodates Immersion Heater and Self-Regulating Heat Cable for cold climates (sold separately)
- Quick refill function - no waiting for water
- Hinged cover for easy access

MODEL	PART #	LENGTH IN/CM	WIDTH IN/CM	OVERALL HEIGHT IN/CM	DRINKING HEIGHT IN/CM	SHIPPING WEIGHT LBS/KG	HEAT (CF=CONSTANT FLOW)	CAPACITY GAL/LITER	HERD CAPACITY
AutoFont 1	18770	20.5/52	20/51	28/71	24/61	45/20	Opt Imm Heater & Self-Reg Heat Cbl	2/7.6	20 horses



UltraFont 1

The UltraFont is designed to give year-round service, providing clean, fresh, temperate water regardless of climate. The UltraFont has been proven to function in some of the most brutal climates. The insulated UltraFont is extremely energy efficient, with heavy-duty construction and maintenance free float system. Stainless steel drinking area and premier heating system offer unbeatable longevity.

- Ideal for all weather climates
- Supplies fresh, clean and temperate water
- Easy to drain & Clean
- Waters up to 20 head
- Fully Insulated and features overall heat coverage
- Quick refill function - no waiting for water
- Hinged cover for easy access to float and valve
- UL/CUL approved

MODEL	PART #	LENGTH IN/CM	WIDTH IN/CM	OVERALL HEIGHT IN/CM	DRINKING HEIGHT IN/CM	SHIPPING WEIGHT LBS/KG	HEAT (CF=CONSTANT FLOW)	WATTS (AMPS)	CAPACITY GAL/LITER	HERD CAPACITY
UltraFont 1	18780	20.5/52	20/51	29/74	24/61	40/18	Std Electric	173W (1.4A@120V)	1.5/5.7	20 Horses

AutoFount

Automatic access for up to 40 head. The AutoFount has a quick refill function, which means less waiting for water, and better hydration for all your animals. AutoFount saves water by reducing waste. Hinged cover allows easy access to the fully insulated chamber. Heavy-duty polyethylene construction and worry free float system ensure years of trouble free service.

- Ideal for split pen setup
- Easy to drain & clean
- Waters up to 40 head
- Accommodates Immersion Heater and Self-Regulating Heat Cable for winter climates (sold separately)
- Quick refill function - no waiting for water
- Hinged cover for easy access to valve and float



MODEL	PART #	LENGTH IN/CM	WIDTH IN/CM	OVERALL HEIGHT IN/CM	DRINKING HEIGHT IN/CM	SHIPPING WEIGHT LBS/KG	HEAT (CF=CONSTANT FLOW)	CAPACITY GAL/LITER	HERD CAPACITY
AutoFount	18720	30/76.2	20/51	28.5/72.5	24/61	50/22.7	Opt Imm Heater & Self-Reg Heat Cbl	3.2/12	40 Horses

UltraFount

Stainless Steel, heated, automatic for up to 40 head. The UltraFount is designed to give year-round service, providing clean, fresh, temperate water regardless of climate. If you're tired of breaking ice on the coldest days, the UltraFount has been proven to function in some of the most brutal climates. The insulated UltraFount is extremely energy efficient, with heavy-duty construction and maintenance free float system. Stainless steel drinking area and premier heating system offer unbeatable longevity.

- Ideal for split pen setup
- Featuring a hinged cover for easy access to drain & clean
- Fully insulated with thermostatically controlled heat
- Quick refill function - no waiting for water
- UL/CUL approved



MODEL	PART #	LENGTH IN/CM	WIDTH IN/CM	OVERALL HEIGHT IN/CM	DRINKING HEIGHT IN/CM	SHIPPING WEIGHT LBS/KG	HEAT (CF=CONSTANT FLOW)	WATTS (AMPS)	CAPACITY GAL/LITER	HERD CAPACITY
UltraFount	18730	30.5/77.5	20/51	29/74	24/61	50/22.7	Std Electric	298W (2.5A@120V)	3.1/12	40 Horses



All Ritchie and Classic Equine by Ritchie fountains carry a ten-year warranty. On poly units, this is five years full warranty, with a prorated (20% per year) warranty the last five years. Steel products carry a 10 year, 100% warranty on stainless troughs against manufacturing defects and corrosion; one year full and nine years prorated on casing and cover. Valves and heaters are warranted for one year from the date of purchase.

To learn more about the 10-year Ritchie warranty visit ritchiefount.com/warranty-info

Ritchie is an official sponsor of the Kentucky Horse Park, Clinton Anderson/Downunder Horsemanship and the USTRC





WaterMatic 100

The WaterMatic 100 is a single sided automatic waterer for horses, cattle and small herds. Ideal for stalls, small pens or paddocks. The drop in cover is easy to lift for maintenance and cleaning. Trough slopes towards drain hole for easy cleaning and debris removal. Optional heat required for winter use.

- No gaskets to crack, tear or leak
- One piece rugged fountain body
- Generous side access panel
- Easy to clean and maintain
- All surfaces slope to drains for easy clean out
- Ideal for individual stalls or pens
- Immersion Heater and Self-Regulating Heat Cable required for freezing conditions (sold separately)

MODEL	PART #	LENGTH IN/CM	WIDTH IN/CM	OVERALL HEIGHT IN/CM	DRINKING HEIGHT IN/CM	SHIPPING WEIGHT LBS/KG	HEAT (CF=CONSTANT FLOW)	CAPACITY GAL/LITER	HERD CAPACITY
WaterMatic 100	18165	24.5/62	14/36	23.5/60	18/46	38/17	Opt Imm & Self-Reg Heat Cable	2.8/11	20 horses



OmniFount 1

Designed with animal safety in mind, the OmniFount 1 features smooth rounded edges and a fully insulated casing for energy efficiency. The stainless steel trough features thermostatically controlled heat elements that are attached to the underside for frost free service even under the most severe winter conditions. The OmniFount 1's single trough has a fast refill valve.

- Easy to maintain and clean
- Large access panel for ease in maintenance
- Heating elements are located directly under the stainless steel trough for exceptional performance and overall heat coverage
- Cable heater provides extra valve and supply line protection
- Insulated with energy efficient polyurethane foam, providing an R-factor of R-7 per inch
- UL/CUL approved

MODEL	PART #	LENGTH IN/CM	WIDTH IN/CM	OVERALL HEIGHT IN/CM	DRINKING HEIGHT IN/CM	SHIPPING WEIGHT LBS/KG	HEAT (CF=CONSTANT FLOW)	WATTS (AMPS)	CAPACITY GAL/LITER	HERD CAPACITY
OmniFount 1	18359	20/51	14.5/37	25/64	18/46	39/18	Std Electric	173W (1.4A@120V)	1.5/6	20 horses



EcoFount 1

The EcoFount waterers are the most energy efficient, electric standard heated line of Ritchie automatic waterers. The flip top cover design allows easy cleaning and maintenance and the fully insulated casing provides excellent protection against cold temperatures. The 304 stainless steel trough features thermostatically controlled heating elements for ice-free service during severe winter conditions. EcoFount 1 is a single drink ideal in small pens or paddocks.

- Designed with energy efficiency in mind. The stainless steel trough is surrounded by extremely durable and fully insulated poly
- Plastic drink well helps insulate water and keep thermal cap in place
- Flip-top cover feature for easy cleaning and maintenance
- Electric heat with adjustable disc thermostat
- Cable heater provides extra valve and supply line protection
- UL/CUL approved

MODEL	PART #	LENGTH IN/CM	WIDTH IN/CM	OVERALL HEIGHT IN/CM	DRINKING HEIGHT IN/CM	SHIPPING WEIGHT LBS/KG	HEAT (CF=CONSTANT FLOW)	WATTS (AMPS)	CAPACITY GAL/LITER	HERD CAPACITY
EcoFount 1	18430	22/56	18/46	20/51	20/51	41/19	Std Electric	173W (1.4A@120V)	3.5/13	30 horses

WaterMatic 150

The WaterMatic 150 is ideal for fence line applications with its small compact two-trough design. The waterer is fully insulated to keep the water cool in the summer and provides added protection during the winter. The drop in cover is easy to lift for maintenance and cleaning. Trough slopes towards drain holes for easy cleaning and debris removal.

- No gaskets to crack, tear or leak
- One piece rugged fountain body
- Generous side access panel
- Easy to clean and maintain
- All surfaces slope to drains for easy clean out
- Ideal for a fence line application
- Immersion Heater and Self-Regulating Heat Cable for freezing conditions (sold separately)



MODEL	PART #	LENGTH IN/CM	WIDTH IN/CM	OVERALL HEIGHT IN/CM	DRINKING HEIGHT IN/CM	SHIPPING WEIGHT LBS/KG	HEAT (CF=CONSTANT FLOW)	CAPACITY GAL/LITER	HERD CAPACITY
WaterMatic 150	18166	33.5/85	14/36	23.5/60	18/46	50/23	Opt Imm & Self-Reg Heat Cable	4.2/16	40 horses

OmniFount 2

The OmniFount 2 is a double sided automatic waterer for equine. Ideally used when splitting a fence for small pens and paddocks. The stainless steel trough features thermostatically controlled heat elements that are attached to the underside for frost free service even under the most severe winter conditions.

- Easy to maintain and clean
- Large access panel for easy access to heating components and waterline
- Heating elements are located directly under the stainless trough for exceptional performance while cable heater provides extra valve and supply line protection
- Insulated with energy efficient polyurethane foam, providing an R-factor of R-7 per inch
- OmniFount 2 comes complete & ready to install to your electric & waterlines
- UL/CUL approved



MODEL	PART #	LENGTH IN/CM	WIDTH IN/CM	OVERALL HEIGHT IN/CM	DRINKING HEIGHT IN/CM	SHIPPING WEIGHT LBS/KG	HEAT (CF=CONSTANT FLOW)	WATTS (AMPS)	CAPACITY GAL/LITER	HERD CAPACITY
OmniFount 2	16619	28.3/72	14.5/37	25/64	18/46	45/20	Std Electric	298W (2.5A@120V)	2.2/8	40 horses

EcoFount 2

The EcoFount 2 is a double drink automatic waterer for 1-60 head. Ideally used when splitting a fence or for small pens and paddocks. The flip top cover design allows easy cleaning and maintenance and the fully insulated casing provides excellent protection against cold temperatures. The stainless steel trough features thermostatically controlled heating elements for ice-free service during severe winter conditions.

- Designed with energy efficiency in mind. The 304 stainless steel trough is surrounded by extremely durable and fully insulated poly
- Plastic drink well helps insulate water and keep thermal cap in place
- Flip-top cover feature for easy cleaning and maintenance
- Electric heat with adjustable disc thermostat provides overall heat coverage
- Cable heater provides extra valve and supply line protection
- UL/CUL approved



MODEL	PART #	LENGTH IN/CM	WIDTH IN/CM	OVERALL HEIGHT IN/CM	DRINKING HEIGHT IN/CM	SHIPPING WEIGHT LBS/KG	HEAT (CF=CONSTANT FLOW)	WATTS (AMPS)	CAPACITY GAL/LITER	HERD CAPACITY
EcoFount 2	18440	36/91	18.5/47	20/51	20/51	75/34	Std Electric	298W (2.5A@120V)	6.5/25	60 horses



StallFount - Non-heated

Stop carrying buckets of water to your horses. The original StallFount delivers fresh clean water to your horses in their stalls with our brushed 304 stainless steel wall mounted horse waterer. Ideal for an individual stall or indoor area where freezing is not a concern. Durable constructed for one horse. Featuring a removable drain plug for cleaning and a flip top cover for easy maintenance.

- Trough and cover are 304 stainless steel for long life
- Trough features smooth rounded edges for your horse's safety
- Easy to keep clean - water cleans trough surface as it swirls out
- Ideal for individual stalls or pens
- Non-heated wall mount ideal for warm climates where heat is not needed

MODEL	PART #	LENGTH IN/CM	WIDTH IN/CM	OVERALL HEIGHT IN/CM	DRINKING HEIGHT IN/CM	SHIPPING WEIGHT LBS/KG	HEAT (CF=CONSTANT FLOW)	CAPACITY GAL/LITER	HERD CAPACITY
StallFount	16871	14/36	13/33	10.5/27	Adjustable	14/6	NA	1.9/7	Single Stall



StallFount 125

The wall mounted StallFount 125 delivers fresh, clean water to your horse using Ritchie's time proven valve for on demand rapid refill. The StallFount 125 uses a thermostatically controlled 125 watt trough heater and supply line heat cable as-well-as an adjustable insulated shroud to protect the fountain and supply line from freezing. Constructed with smooth edges of brushed 304 stainless steel for long lasting durability and function. Featuring a removable drain plug for cleaning and a flip top cover for easy maintenance.

- Unit is 304 Stainless steel for long life
- StallFount features smooth, rounded edges for the animal safety
- Easy to keep clean - water cleans trough surface as it swirls out
- StallFount 125 comes standard with heating elements, float and valve assembly and drain plug
- UL/CUL approved

MODEL	PART #	LENGTH IN/CM	WIDTH IN/CM	OVERALL HEIGHT IN/CM	DRINKING HEIGHT IN/CM	SHIPPING WEIGHT LBS/KG	HEAT (CF=CONSTANT FLOW)	WATTS (AMPS)	CAPACITY GAL/LITER	HERD CAPACITY
StallFount 125	18082	14/36	13/33	Adjustable	Adjustable	30/14	Std Electric	173W (1.4A@120V)	1.9/7	Single Stall

"Ritchie waterers are all I have ever used. Besides normal maintenance, I have had no trouble at all. The horses and white-tail deer can't destroy them and they'll never freeze. The service from Ritchie Representatives has been good and parts arrive quickly.

I love them!"

Wayne Burgess
Char-B-Acres
Albertville, AL

"Home of the Legendary Loper"

Ritchie is an official sponsor of the Kentucky Horse Park,
 Clinton Anderson/Downunder Horsemanship and the USTRC



WaterMatic 150S

The WaterMatic 150S is ideal for fence line applications with its small compact two-trough design. The waterer is fully insulated to keep the water cool in the summer and provides added protection during the winter. The drop in cover is easy to lift for maintenance and cleaning. Trough slopes towards drain holes for easy cleaning and debris removal while the domed cover prevents climbing and standing.

- No gaskets to crack, tear or leak
- One piece rugged fountain body
- Generous side access panel
- Easy to clean and maintain
- All surfaces slope to drains for easy clean out
- Ideal for a fence line application
- Immersion Heater and Self-Regulating Heat Cable for freezing conditions (sold separately)



MODEL	PART #	LENGTH IN/CM	WIDTH IN/CM	OVERALL HEIGHT IN/CM	DRINKING HEIGHT IN/CM	SHIPPING WEIGHT LBS/KG	HEAT (CF=CONSTANT FLOW)	CAPACITY GAL/LITER	HERD CAPACITY
WaterMatic 150S	18222	33.5/85	14/36	22.5/57	13/33	41/19	Opt Imm & Self-Reg Heat Cable	4.2/16	100 sheep/goats

Omni-2 Special

Designed with animal safety in mind, the Omni-2 Special features smooth rounded edges and a fully insulated casing for energy efficiency. The Omni-2 Special is specifically designed for small animals with its low drinking height. The fast refill valve will provide fresh water for a couple of animals or up to 80 calves/100 sheep or goats.

- Easy to maintain and clean
- Large access panel for easy access to heating components and waterline
- Heating elements are located directly under the stainless trough for exceptional performance while cable heater provides extra valve and supply line protection
- Insulated with energy efficient polyurethane foam, providing an R-factor of R-7 per inch
- UL/CUL approved
- OmniFount unit comes complete and ready to install



MODEL	PART #	LENGTH IN/CM	WIDTH IN/CM	OVERALL HEIGHT IN/CM	DRINKING HEIGHT IN/CM	SHIPPING WEIGHT LBS/KG	HEAT (CF=CONSTANT FLOW)	WATTS (AMPS)	CAPACITY GAL/LITER	HERD CAPACITY
Omni-2 Special	18680	28.3/72	14.5/37	18/46	11/28	34/15	Std Electric	298W (2.5A@120V)	2.2/8	100 sheep/goats

Omni Combination Conversion

Upgrade your OmniFount 5 or OmniFount 10 with a lower drinking option. The Omni Combination Conversion provides an easy way to add a lower trough to your already existing OmniFount 5 and OmniFount 10 waterer. Featuring smooth rounded corners, insulated casing and the same durable construction found in all of our waterers. The Omni Combination Conversion is ideal for calves, sheep and other small animals. Sized to replace the access panel in existing installed OmniFount 5 and OmniFount 10 units, the Omni Combination conversion is also easy to install.

- Smooth rounded corners for animal safety
- Easy to install & remove for maintenance & access to waterline & heaters
- Low to the ground with 13" drinking height
- Ideal for calves and other small animals
- Immersion Heater freeze protection available for cold climates (part number 16311, sold separately)
- Durable deep trough for reliable water supply
- NOTE - Not intended for use with swine
- Easily replace the access panel on an Omni 5 (pg 8) and Omni 10 (pg 10)



Removable for access to waterline and heaters



Immersion Heater freeze protection (sold separately)

Pork King Series

The Ritchie Pork King is designed to take the bumping and shoving of a whole pen of hogs. Built entirely of 304 stainless steel for maximum durability, the pork king fountains are equipped with electric heat and the industry's most reliable valve.

- Insulated all over for heat retention
- Umbrella style lift out cover makes service access easy and keeps out foreign material
- Fully welded casing construction
- Heavy lids take the abuse of banging
- Thermostatically controlled heat standard
- UL/CUL approved



MODEL	PART #	LENGTH IN/CM	WIDTH IN/CM	OVERALL HEIGHT IN/CM	DRINKING HEIGHT IN/CM	SHIPPING WEIGHT LBS/KG	HEAT (CF=CONSTANT FLOW)	WATTS (AMPS)	CAPACITY GAL/LITER	HERD CAPACITY
PK 4	16459	31.5/80	23.3/59	12.5/32	7/18	63/29	Std Electric	548W (4.6A@120V)	3.5/13	160 hogs
PK 2-1	16458	23.2/59	23.3/59	12.5/32	7/18	48/22	Std Electric	298W (2.5A@120V)	2/8	80 hogs
PK 2	16457	31.5/80	13/33	12.5/32	7/18	43/20	Std Electric	298W (2.5A@120V)	2/8	80 hogs
PK 1	16456	23.2/59	13/33	12.5/32	7/18	30/14	Std Electric	298W (2.5A@120V)	1.2/5	40 hogs

Thrifty King for Swine

Same rugged construction as our Pork King, but with the energy efficiency of plastic. **Not recommended for use with sows.**

- Large drink opening and low drinking height for easy use by hogs of all sizes
- Solid foam insulation completely sealed in impact resistant polyethylene
- Stainless steel bite and wear guards sealed for long life
- Insulated with energy efficient polyurethane foam, providing an R-factor of R-7 per inch
- Large access to inside valve compartment
- Immersion Heater and Self-Regulating Heat Cable for freezing climates (sold separately)



MODEL	PART #	LENGTH IN/CM	WIDTH IN/CM	OVERALL HEIGHT IN/CM	DRINKING HEIGHT IN/CM	SHIPPING WEIGHT LBS/KG	HEAT (CF=CONSTANT FLOW)	CAPACITY GAL/LITER	HERD CAPACITY
HG 4	16260	31.3/80	31.3/80	16/41	8/20	70/32	Opt Imm & Self-Reg Heat Cbl	5.2/20	160 hogs
HG 2	16259	31.3/80	20/51	16/41	8/20	50/23	Opt Imm & Self-Reg Heat Cbl	2/8	80 hogs

Thermal Tubes

Part #18158 - 1'

Part #16416 - 2' extension

Part #16417 - 2'

Part #16612 - 4'

- Permanently protects vertical water supply line from freezing
- Two inches of permanent insulation all around
- (12" outside diameter, 8" inside)
- Tested at Iowa State University



Stock Tank Valve

Part #18141

- Rapid refill rates: 12 GPM @ 20 psi, 17 GPM @ 40 psi, 22 GPM @ 60 psi
- Automatically maintains stock tank water level
- High density impact resistant plastic construction
- Smooth rounded surfaces for animal safety



Digital Water Meter

Part #18645

- Records total gallons and gallons per minute
- Easy to reset
- 4 foot cord allows for ideal placement for easy reading
- Velcro backing mounting and battery operated.



Immersion Heater

Part #16311 (120V - 250 watt)

Part #17960 (240V - 250 watt)

Part #17961 Euro Plug (240V - 250 watt)

- Includes built-in thermostat
- For use in all poly units
- Teflon coating



Ritchie Floats

#	PART#	Usage
1	18314	3/4" float series for large units
2	18642	Classic Equine StallFount float
3	12836	1/2" w/ long arm for small units
4	13613	1/2" w/short arm for SF & small units



Self-Regulating Heat Cable

Cable

Part #16276 (120V - 30 watt)

Part #16713 (240V - 30 watt)



3/4" Valve Series

VALVE COLOR	*PART#	GPM	PRESSURE
White	16697	33	Low, 5-40 psi
Red	11101	20	Medium, 40-60 psi
Green	15377	16.5	High, 60-80 psi



1/2" Valve Series

VALVE COLOR	*PART#	GPM	PRESSURE
White	12574	4.8	Low, 5-40 psi
Red	12575	3.4	Medium, 40-60 psi
Green	13597	1.45	High, 60-80 psi



Drain Plugs

Part #14647

Used in all EcoFount units

Part #18219

Used in Thrifty King, OCC, & some WaterMaster units

Part #18221

Used in all StallFount models

Part #18338

Used in some CattleMaster units

Part #18470

Used in some WaterMaster & WaterMatic units

Part #18628

Used in all OmniFount models

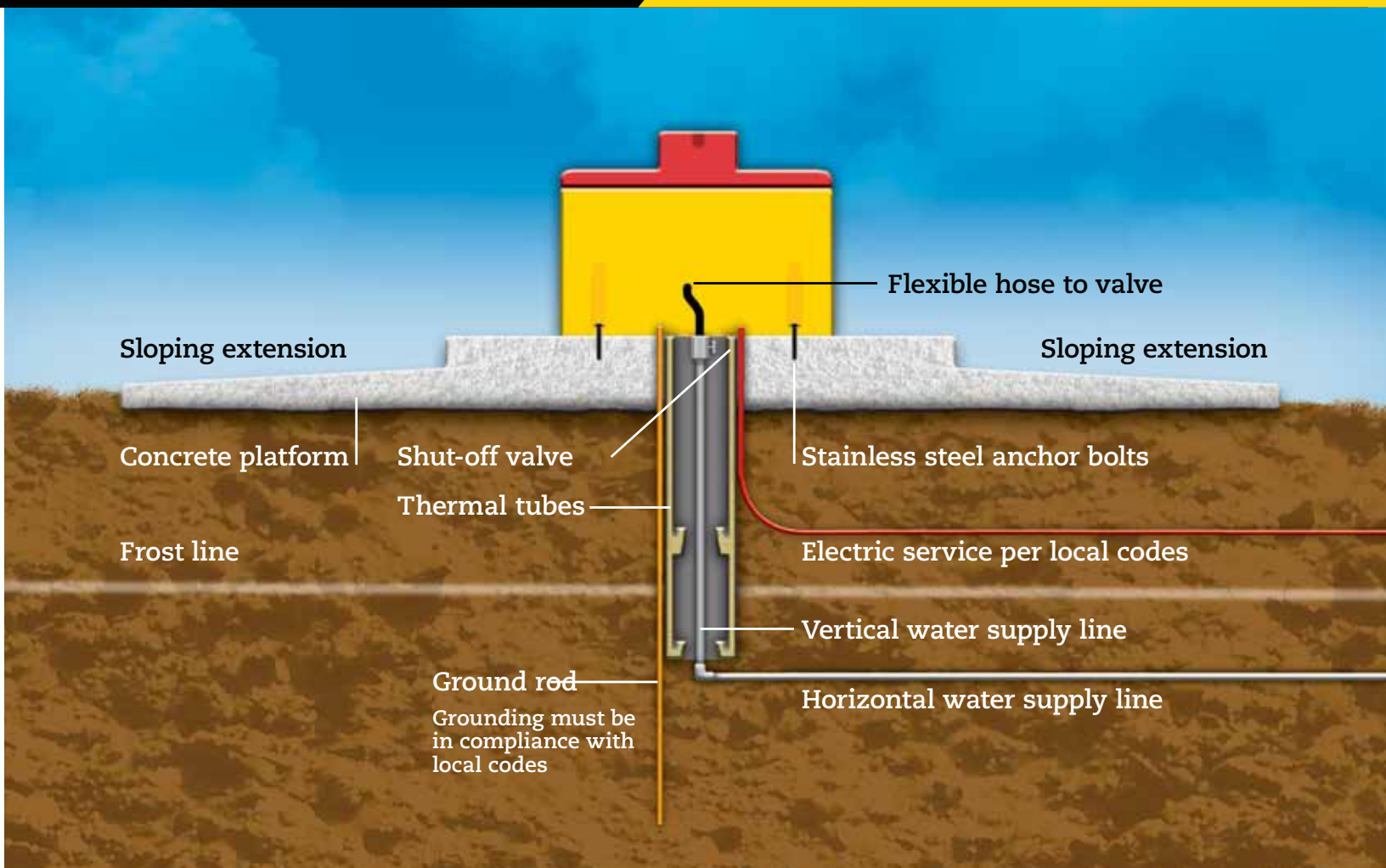
Part #18643

Used in all Classic Equine StallFount models



RITCHIE 120V SPECIFICATIONS

MODEL	PART#	LENGTH IN/CM	WIDTH IN/CM	OVERALL HT. IN/CM	DRINKING HT. IN/CM	SHIPPING WT. LBS/KG	HEAT (CF = Constant Flow)	CAPACITY GALLON/LITER	HERD CAPACITY
WaterMaster									
WM 1200	18053	144/366	24/61	29/72	24/61	265/120	CF Opt/Opt Imm & Self-Reg Heat Cbl	60/227	500 beef, 250 dairy
WM 96	18007	96/244	33/84	28/71	22/56	210/95	CF Std/Opt Imm & Self-Reg Heat Cbl	75/284	300 beef, 150 dairy
WM 90	16467	90/229	33/84	28/71	22/56	182/83	CF Std/Opt Imm & Self-Reg Heat Cbl	30/114	300 beef, 150 dairy
WM 600	18171	72/183	24/61	28.5/72	24/61	132/60	CF Opt/Opt Imm & Self-Reg Heat Cbl	28/106	250 beef, 125 dairy
WM 54	16542	54/137	33/84	28/71	22/56	125/57	CF Std/Opt Imm & Self-Reg Heat Cbl	18/68	200 beef, 100 dairy
WM 54 Deep	18355	54/137	33/84	28/71	22/56	125/57	CF Std/Opt Imm & Self-Reg Heat Cbl	54/204	200 beef, 100 dairy
WaterMatic									
1000	18110	42/107	42/107	32/81	26/66	129/59	Opt Imm & Self-Reg Heat Cbl	22/83	275 beef, 135 dairy
300	18050	36/91	21.5/55	31/79	26/66	71/32	Opt Imm & Self-Reg Heat Cbl	8.2/31	125 beef, 60 dairy
150S	18222	33.5/85	14/36	22.5/57	13/33	41/19	Opt Imm & Self-Reg Heat Cbl	4.2/16	100 sheep or goats
150	18166	33.5/85	14/36	23.5/60	18/46	50/23	Opt Imm & Self-Reg Heat Cbl	4.2/16	40 beef, 40 horses
100	18165	24.5/62	14/36	23.5/60	18/46	38/17	Opt Imm & Self-Reg Heat Cbl	2.8/11	20 beef, 20 horses
Thrifty King									
CT6	16440	72.5/184	39/99	25/64	19/48	210/95	Opt Imm & Self-Reg Heat Cbl	55/208	300 beef
CT4-2000	16430	43/109	35/89	25/64	19/48	123/56	Opt Imm & Self-Reg Heat Cbl	45.5/172	200 beef
CT2-2000	16299	43/109	24/61	25/64	19/48	90/41	Opt Imm & Self-Reg Heat Cbl	28/106	100 beef
CT1-2000	16271	28/71	20.3/51	25/64	19/48	61/28	Opt Imm & Self-Reg Heat Cbl	11.2/42	30 beef
OmniFount									
OmniFount 10	18460	40.5/103	40.5/103	31.5/80	26/66	150/68	1048W (8.7A@120V)	28/106	275 beef, 135 dairy
OmniFount 5	16533	40/102	23.5/60	33/84	26/66	92/42	548W (4.6A@120V)	16/61	150 beef, 75 dairy
OmniFount 3	18270	31.5/80	22/56	33/84	26/66	77/35	548W (4.6A@120V)	10/38	100 beef, 50 dairy
OmniFount 2	16619	28.3/72	14.5/37	25/64	18/46	45/20	298W (2.5A@120V)	2.2/8	40 beef, 40 horses
Omni-2 Special	18680	28.3/72	14.5/37	18/46	11/28	34/15	298W (2.5A@120V)	2.2/8	100 sheep or goats
OmniFount 1	18359	20/51	14.5/37	25/64	18/46	39/18	173W (1.4A@120V)	1.5/6	20 beef, 20 horses
Omni Combination Conversion	18800	20/51	22/56	19/48	13/33	17/8	Opt Immersion Heater	2.7/10	20 calves
DairyFount									
DairyFount 8	18820	96/244	24/61	27/69	24/61	155/70	Opt Imm & Self-Reg Heat Cbl	52/197	180 Dairy
CattleMaster									
CM 1440	18252	146/370	23.5/59.7	24/61	16/41	186/84	1298W (10.9A@120V)/CF	60/227	475 beef, 240 dairy
CM 10T	18700	120/305	32/81	33/84	25/64	235/107	1048W (8.7A@120V)/CF	50/189	400 beef, 200 dairy
CM 840	18235	86/218.4	23.5/59.7	24/61	16/41	123/56	1048W (8.7A@120V)/CF	35/133	300 beef, 150 dairy
CM 480	18248	51/129.5	23.5/59.7	24/61	16/41	90/41	548W (4.6A@120V)/CF	20/76	200 beef, 100 dairy
EcoFount									
EcoFount 2	18440	36/91	18.5/47	20/51	20/51	75/34	298W (2.5A@120V)	6.5/25	60 beef, 60 horses
EcoFount 1	18430	22/56	18/46	20/51	20/51	41/19	173W (1.4A@120V)	3.5/13	30 beef, 30 horses
StallFount									
StallFount 125	18082	14/36	13/33	Adjustable	Adjustable	30/14	173W (1.4A@120V)	1.9/7	Single Stall
StallFount	16871	14/36	13/33	10.5/27	Adjustable	14/6	NA	1.9/7	Single Stall
Shroud Set	18092	19.4/49 each	7/18	Up to 4'	Up to 4'	13/6	NA	NA	NA
Pork King									
PK 4	16459	31.5/80	23.3/59	12.5/32	7/18	63/29	548W (4.6A@120V)	3.5/13	160 hogs
PK 2-1	16458	23.2/59	23.3/59	12.5/32	7/18	48/22	298W (2.5A@120V)	2/8	80 hogs
PK 2	16457	31.5/80	13/33	12.5/32	7/18	43/20	298W (2.5A@120V)	2/8	80 hogs
PK 1	16456	23.2/59	13/33	12.5/32	7/18	30/14	298W (2.5A@120V)	1.2/5	40 hogs
Thrifty King for Swine									
HG 4	16260	31.3/80	31.3/80	16/41	8/20	70/32	Opt Imm & Self-Reg Heat Cbl	5.2/20	160 hogs
HG 2	16259	31.3/80	20/51	16/41	8/20	50/23	Opt Imm & Self-Reg Heat Cbl	2/8	80 hogs
Classic Equine by Ritchie									
EZ Fount	18710	23/58.4	20/50.8	28.5/72.5	24/61	32/14.5	NOT FOR USE IN COLD CLIMATES	3.8/14.3	20 horses
AutoFount 1	18770	20.5/52	20/51	28/71	24/61	45/20	Opt Imm Heater & Self-Reg Heat Cbl	2/7.6	20 horses
AutoFount	18720	30/76.2	20/51	28.5/72.5	24/61	50/22.7	Opt Imm Heater & Self-Reg Heat Cbl	3.2/12	40 horses
UltraFount 1	18780	20.5/52	20/51	29/74	24/61	40/18	173W (1.4A@120V)	1.5/5.7	20 horses
UltraFount	18730	30.5/77.5	20/51	29/74	24/61	50/22.7	298W (2.5A@120V)	3.1/12	40 Horses
StallFount - Unheated	18748	16.5/41.9	16.5/41.9	12/30.5	Adjustable	20/9.1	Unheated	1/3.79	Single Stall
StallFount - Heated	18740	16.5/41.9	16.5/41.9	12/30.5	Adjustable	20/9.1	173W (1.4A@120V)	1/3.79	Single Stall
StallFount 20" Shroud	18744	19/48.3	7/17.8	20/50.8	32/81	9/4.08	NA	NA	NA
StallFount 30" Shroud	18746	19/48.3	7/17.8	30/76.2	42/107	12/5.44	NA	NA	NA



Water Supply Line

A minimum 3/4" diameter horizontal and vertical water supply line is necessary; a 1" diameter line is recommended. Bury the horizontal water supply line 4' deep or 1' below the normal frost line depth, whichever is deeper. This will ensure your animals are getting warmer water in the winter and cooler water during the summer. A shut-off valve may be installed under the fountain for easier servicing.

Ritchie Thermal Tubes

For optimum water supply line protection, use Ritchie Thermal Tubes. The tubes are available in 3 lengths and have the most favorable diameters to maintain temperature in the waterline. Center the vertical water supply line in the tubes. Do not add insulation inside the tubes as it provides a path for frost. **The tubes should reach at least 4' deep or 1' below the normal frost line depth, whichever is deeper.**

Anchor Locations

Fasten fountain to the concrete mounting platform with stainless steel anchor bolts (sold separately) using all anchor locations provided on the fountain. Use the actual fountain being installed as the template for anchor bolt location.

Concrete Platform

Pour a concrete mounting platform that provides a 4-6" thick step 18" around the perimeter of the unit. An additional concrete extension all around and sloping away from the unit may be poured for improved footing and to aid in proper drainage. The platform must be level for the best operation of the fountain. For larger operations it is recommended to pour a concrete pad large enough for the drinking animal to stand on completely.

Electrical Connections

The electrical installation should be made and maintained by a qualified electrician conforming to national and local codes. A means for disconnection must be incorporated in the fixed wiring in accordance with the wiring rules.

Grounding

Install grounding rod according to National/Local electrical code where livestock waterers are installed in feedlots and open feeding areas. Ground the waterers with a separate stranded copper grounding conductor of at least no.6 AWG. The installation of an equipotential plane is required by NEC in newly constructed livestock confinement areas. Most states have adopted the NEC, check with your state electrical inspector for any questions in your area.

Thanks to our top notch team of dedicated, knowledgeable distributors and dealers, you'll find Ritchie fountains all over the United States, Canada, and world-wide. To find your nearest dealer, please call the distributor for your region or visit Ritchiefount.com/dealer-locator.

UNITED STATES DISTRIBUTORS

Colorado, Idaho, Montana, New Mexico, Oregon, Utah, Washington and Wyoming,

2-M COMPANY
Billings, MT 59101
(800) 234-7426
info@2mco.com
For branch locations visit:
2mco.com

Texas, Southern Oklahoma

BECKER WHOLESALE
Slaton, TX 79364
(800) 269-7473
beckerwholesale@gmail.com

Kansas, Northwest Arkansas, Northern Oklahoma

BOETTCHER SUPPLY, INC.
Beloit, KS 67420
(800) 657-5770
info@boettchersupply.com

Missouri

BOGIE PUMP, INC.
Moberly, MO 65270
(660) 263-3700
bogiepump@att.net

Southern Indiana, Tennessee, Kentucky, Southern Ohio

CENTRAL FARM SUPPLY
Louisville, KY 40219
(800) 777-5923
pkuntzman@centralfarmky.com

Minnesota and Iowa

CARLSON WHOLESALE, INC.
Sauk Rapids, MN 56379
(800) 669-4038
tim@carlsonwholesale.net

Northern Indiana, Michigan, Northern Ohio

RITCHIE INDUSTRIES, INC.
Conrad, IA 50621
(800) 747-0222
info@ritchiefount.com

Wisconsin, Northern Illinois, Northwest Michigan

FERGUSON ENTERPRISES
Wisconsin Rapids, WI 54495
(800) 950-4882
greg.strebig@ferguson.com

Southwest Illinois

ILL-MO PUMP & SUPPLY
East St. Louis, IL 62202
(618) 271-3462
illmopump@gmail.com

Alabama, Arkansas, Florida, Georgia, Louisiana, Mississippi, Eastern Texas

K&K VETERINARY SUPPLY
479-361-1516
farmsupply@kkvet.com

Nebraska

NEBRASKA PUMP
Lincoln, NE 68504-1553
(800) 627-9913
nebraskapump@hotmail.com

North Carolina, South Carolina, West Virginia, Virginia

MAY SUPPLY, INC.
Harrisonburg, VA 22801
(800) 296-9997
sales@maysupply.com

Alaska, Arizona, California, Hawaii

RITCHIE INDUSTRIES, INC.
Conrad, IA 50621
(800) 747-0222
info@ritchiefount.com

Idaho, Nevada, New Mexico, Oregon, Utah, Washington, Wyoming

ROBERTSON SUPPLY
Nampa, ID 83653-1366
(800) 755-6348
shelly@robertsonsupply.com
For branch locations visit:
Robertsonsupply.com

Delaware, New England, Maryland, New Jersey, New York, Pennsylvania

RYDER SUPPLY COMPANY
Chambersburg, PA 17202
(888) 464-6379
info@rydersupply.com

Tennessee

TENNESSEE FARMERS CO-OP
LaVergne, TN 37086-1983
(800) 366-2667
jbuchanan@ourcoop.com

Western Minnesota, North Dakota, South Dakota, Northwest Iowa

V&M CO., INC.
Sioux Falls, SD 57104
(800) 648-6507
ritchieinfo@vandminc.com

CANADA DISTRIBUTORS

Alberta, British Columbia

ABILITY PUMP AND EQUIPMENT
Calgary, AB, Canada T2B 3N2
(800) 263-5353
abilitypump@telus.net

Ontario, Quebec, Maritime Prov.

JAD-VENT DBA. DAVON SALES
Woodstock, On Canada N4T 1S3
519-537-2375
doris@davonsales.com

Manitoba, Saskatchewan

TRIPLE M SALES LTD.
Winnipeg, MB, Canada R3E 1G5
(800) 392-1341
triplem@mts.net

INTERNATIONAL DISTRIBUTORS

Belarus

PRIVATE ENTERPRISE TRAVIRA
Minsk District, Minsk Region
Phone 375-17-548-4054
E-mail: travira@mail.ru

Dubai

SOVEREIGN INTERNATIONAL
Dubai, UAE
Phone +97142610616
E-mail: sovint@emirates.net.ae

Estonia, Latvia and Finland

DAIRY TEC OU
Saku Tehnika Street 5 75501
Phone 372-6041730
E-mail: siim.older@oldergrupp.ee

Germany

ARNTJEN GERMANY GMBH
D-26180 Rastede Germany
Phone +49 4402 - 92 40 - 0
E-mail: info@arntjen.com

HOLLAND

ROYAL DE BOER STALINRICHTINGEN
Leeuwarden, Nederland
Phone 31 (0) 58-2843334
E-mail: anneke.vanderHeide@geagroup.com

Italy

G.T.A. AGRI SRL
12022 Busca P.Iva 02787530043
Phone 390-171-946-736
E-mail: info@cta-agri.com

Japan

TOHO BOEKI K.K.
Meguro-Ku, Tokyo, Japan
Phone 81-3-3723-7181
E-mail: chikira@tohoboeki.com

Kazakhstan

EMPIRE GROUP CORPORATION
Jheticu 3, Almaty 050063
Phone 7-272-313-1747
E-mail: a-javidan@egc.kz

Lithuania

WESTFALIA UAB BIRZU ZEMTI-KIMAS
Tiekimo Street 4, Birzai LT - 41128
Phone 370-45031383
E-mail: westfalia@zemtiekimas.lt

Poland

GEA FARM TECHNOLOGIES
85-461, Bydgoszcz
Phone 48-(0)-523480442
E-mail: krzysztof.zaborowski@gea.com

Russia

GEA COMPANY AGROKOMPLEKT
105094 Moscow
Phone 7 (495) 937 5763
E-mail: nikita.butuchan@gea.com

ASC LLC

Moscow Region, Oktyabrskaya 28A
Phone 7(496) 575 9464
E-mail: kae@ascg.ru

Sweden

Lantbutiken Sverige AB
Östra Ryd Lillegård
33391 Smålandsstenar
Phone: 0371-13411
Email: info@lantbutiken.se

Turkey

FENKA GROUP
TORBALI, IZMIR
Phone 0232-854-6684-83
E-mail: ozgur.topuzoglu@fenka.com.tr

Ukraine

AGRO - SOYUZ
Dnepropetrovsk District, Ukraine
Phone 056-3700-481
E-mail: esu@agro.dp.ua

Watering Is Essential, Ritchie Makes It Easy

From a single horse StallFount to waterers that accommodate 500 cattle, Ritchie fountains have set the standard in quality. So when you buy a Ritchie fountain, you know you're getting the most dependable product on the market...not to mention the best value, service and warranty in the business.

For more information visit our website:

www.RitchieFount.com

