

# MAXWELL

## Installation Guide





**1** Unpack vanity unit and check for any damages. **No claims for damages will be recognised after installation.** Remove drawers by opening them and lifting up.



**2** Ensure 2 x wall brackets have been supplied. If wall brackets are missing, please contact your place of purchase. Please note that screws/bolts are not supplied.



**3** It is recommended that a 150 x 35mm support beam be pre-installed into the framework prior to sheeting the wall.



**4** The recommended height of the support beam is approximately 900mm from the floor level. Keep your basin height in mind - you may want your bench to sit slightly lower if you have an above-counter basin.



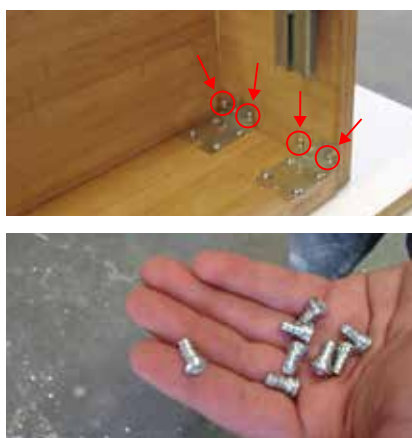
**5** Sheet the wall.



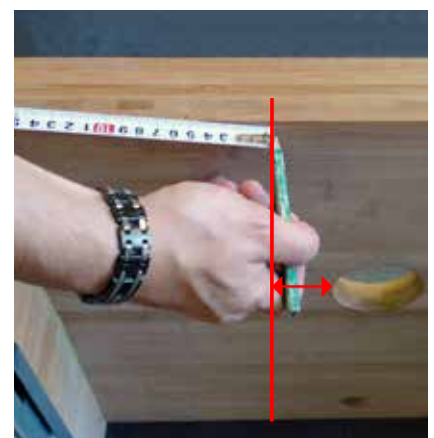
**6** Mark the position of the support beam on the wall.



**7** Check that the marks are **COMPLETELY LEVEL.**



**8** Remove the back panel by removing the screws on the side panels (make sure you keep these screws for later use).



**9** Measure the bracket position on the underside of the bench, making sure to leave enough room for the basin, waste and plumbing.



**10** Mark the position of the wall brackets on the wall. Duplicate this on the rear panel.



**11** Mark the desired overall height minus 25mm (the bench thickness).



**12** Pre-drill into the tiles.



**13** Partly drive the fixing screw/dynabolt through the rear panel.



**14** Attach the rear panel to the wall.



**15** Pre-drill the bracket positions.



## NOTE

Where a stud or support beam cannot be located, use an appropriately sized hollow wall anchor.



**16** Fix brackets onto the rear panel, ensuring the top of the bracket is flush with the top of the rear panel.



**17** Seal the back panel to the tiles with silicone.



**18** Brackets installed correctly are capable of holding a maximum load of 500kg.



**19** Place the unit in position on the brackets.



**20** Replace the screws in the rear brackets.



**21** Screw the top of the bracket into the underside of the bench. Do not penetrate through the top of the bench surface. **IF UNLEVEL** use packing material to ensure that the benchtop surface is **COMPLETELY LEVEL**.



**22** Seal the external part of the bench to the wall with silicone.



**23** Line the drawer into position with the runners extended.



**24** Insert drawers until resistance is felt, then using palms of the hands, force/snap the drawer box onto the runners.