



CLASS NOTATION : I ✕ Hull ✕ Mach, General Cargo Ship; Special Landing Craft, unrestricted navigation

DIMENSIONS

LOA	64.00 m
LBP	60.53 m
MOULDED BREADTH	14.00 m
MOULDED DEPTH	4.00 m
DRAUGHT	3.00 m
DECK AREA	430 m ² (open) +170 m ² (covered)

TONNAGE

GT	1077
NT	323
DECK CARGO	750 mT
DECK STRENGTH	6 mT/m ²
DEADWEIGHT	1278 mT
LIGHT WEIGHT	812 mT
DISPLACEMENT	2122 mT

MACHINERY / PERFORMANCE

SPEED / CONSUMPTION	11 kn / abt. 6.5 mT MGO/day
POWER NOMINAL	2 x 829 HP Yanmar
GENERATORS	2 x MAN each 241 Kwe 1 x Emergency / harbour 84 Kwe
MAIN ENGINES	2 x Yanmar 6 AYM
ELECTRICAL POWER	415/380/220/50 Hz
BOW THRUSTER	1 x 200 kW
CARGO FO-PUMP	1 x 100 m ³ /h + 1 x 50 m ³ /h
CARGO FW-PUMP	1 x 100 m ³ /h + 1 x 50 m ³ /h
BALLAST PUMP	2 fitted

TANK	VOLUME
FUEL OIL (MGO)	980 m ³
BALLAST (F.W.)	255 m ³
FRESH WATER	328 m ³
FRESH WATER PRODUCTION	N/A
DIRTY OIL	4.1 m ³
ENGINE LO	3.7 m ³
BILGE	6.7 m ³

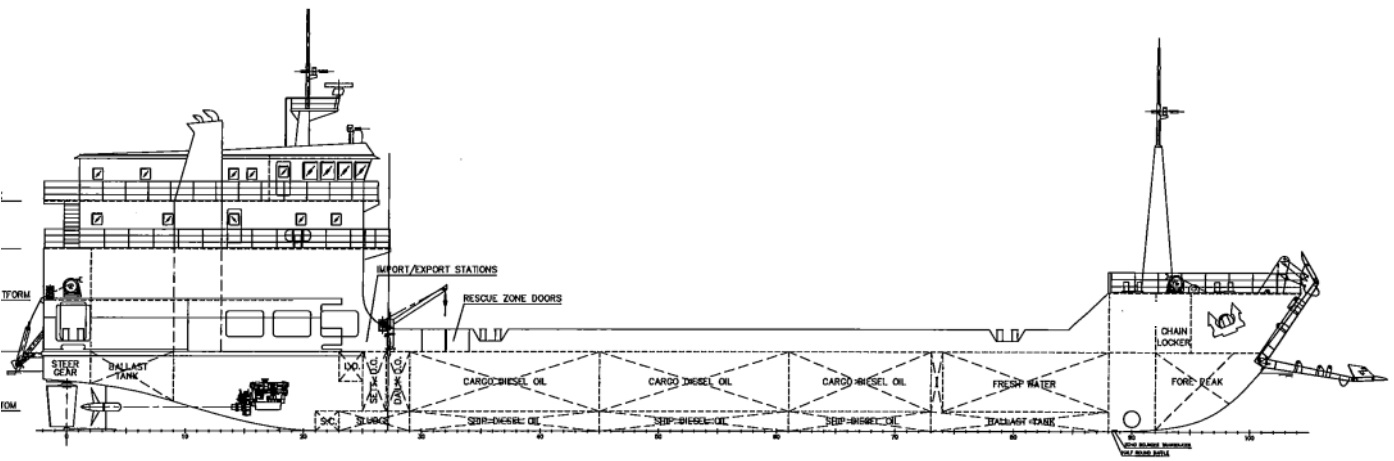


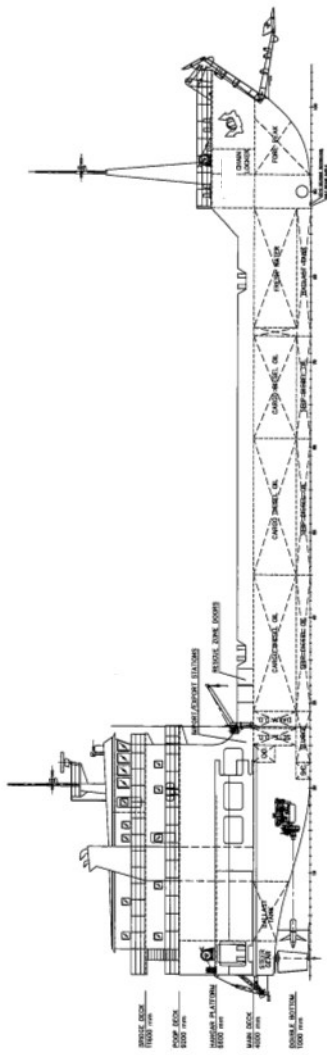
ACCOMMODATION	
6 x 1 MAN CABINS	6
2 x 2 MEN CABINS	4
2 x 4 MEN CABINS	8
PEOPLE CAPACITY INCL. CREW	Total 18



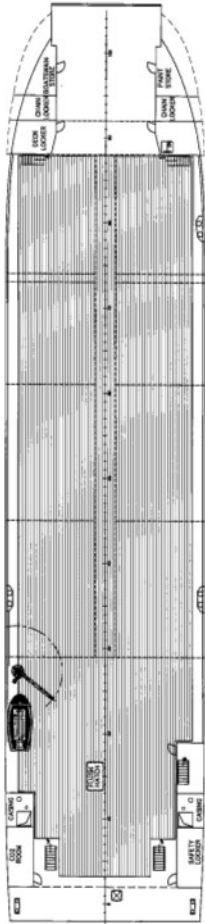
ADDITIONAL INFORMATION

STERN ANCHOR WIRE	350 m, diam 22 mm with chain end.
BOW RAMP	65 t (7.2 x 5.2 m)
CONTAINER	TEU - 66 units only FEU - 25 units only
REEFER PLUGS	4 : 2 x 3P + Earth

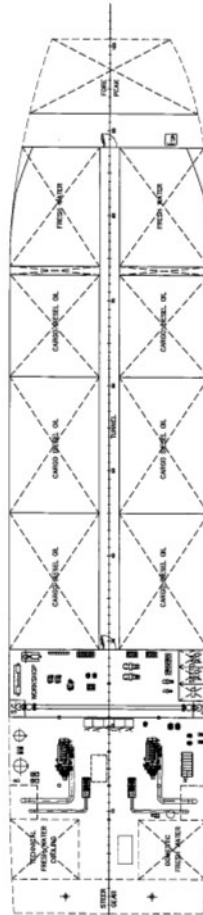




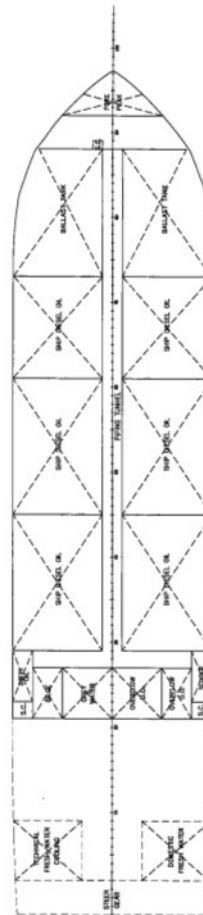
PROFILLE



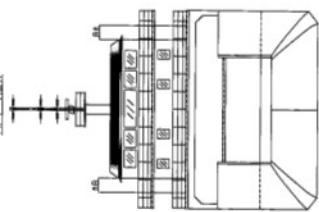
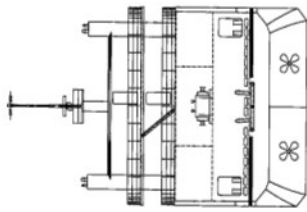
MAIN DECK 4000 mm



ABOVE DOUBLE BOTTOM 1000 mm

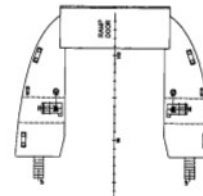
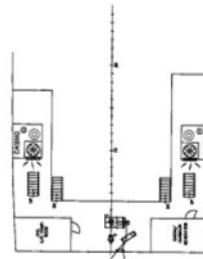
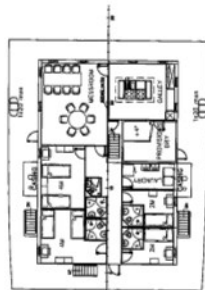
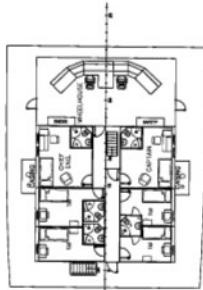


BELOW DOUBLE BOTTOM 1000 mm



MAIN CHARACTERISTICS

LENGTH O.A.	64.00 m
LENGTH B.P.	60.53 m
BEAM MLD.	14.00 m
DEPTH MLD.	4.00 m
DRAFT DESIGNED	3.00 m
COMPLEMENT	18 MEN
DECK LOADING	6 tonnes/m ²



FORECASTLE DECK 7000 mm