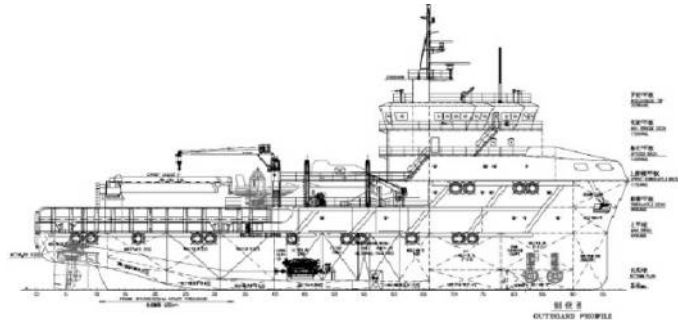




# Brief Introduction

## 60m Maintenance/Work Vessel



### PRINCIPAL PARTICULARS

Builder  
 Designer  
 Class ABS +A1 (E) Offshore Support Vessel,  
 (FFV1),SPS,+ AMS, +DPS-2,

Propulsion TYPE Conventional

### DIMENSIONS

Length Overall ~59.60M  
 Length BP ~56.90M  
 Beam Moulded 15.20M  
 Depth to Main Deck 6.20M  
 Design Draft 4.80M

### MACHINERY

Main Engine 2 x 2575bhp (1920bKW)  
 Generators 4 x 550kW  
 Emergency Generator 1 x 238kW  
 Thrusters 360 deg Azimuths CPP  
 Bow Thrusters 2 x 500kW tunnel Thrusters CPP

### SPEED

Trial Speed at 3.90m 13.3 Knots. 100%MCR  
 Type of Fuel Marine Diesel Oil

### CAPACITIES

Fuel Oil 581 Cu.m  
 Fresh Water 630 Cu.m  
 Water Ballast/Drill 565 Cu.m  
 Lub Oil 19 Cu.m  
 Deadweight 1500 tonnes (Draft 4.8m)

Cargo Deck Free Area 290 m<sup>2</sup>  
 Deck Strength 7.0t/ m<sup>2</sup>  
 Deck Cargo 500t

### PUMPS

Fuel 1 x 150Cu.m @ 80m Hd  
 Fresh Water 1 x 100 Cu.m @ 80m Hd

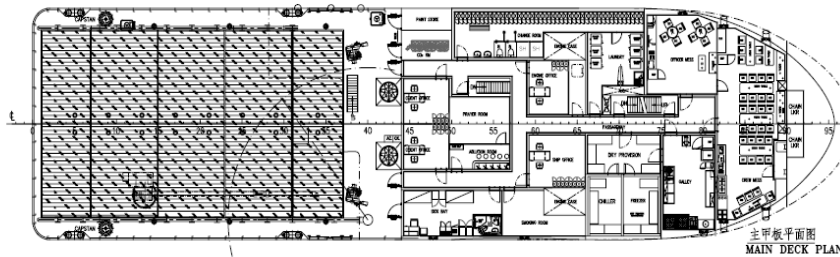
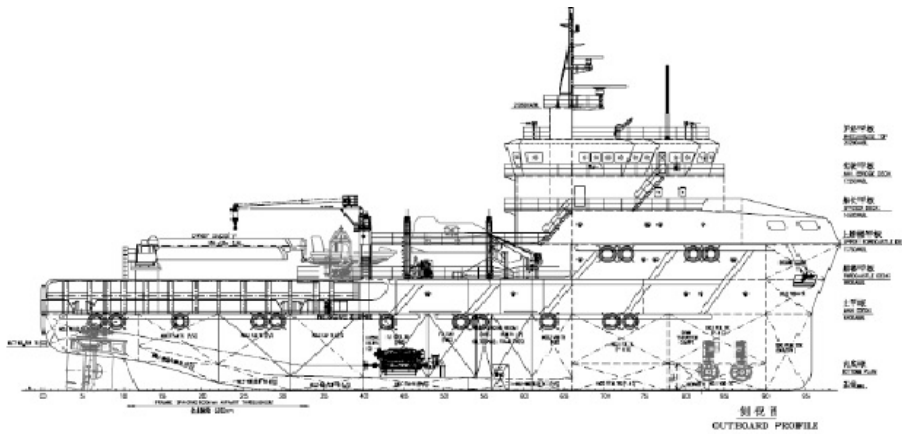
### ACCOMMODATION

One Man Cabins 10x1 man=10 men  
 Two Men Cabins 5x2 men=10 men  
 Four Men Cabins 15x4 men=60men  
 Total Beds 80 Total  
 1 x Hospital 2 bed  
 Offices 4

Sewage system 85 POB  
 Fixed gas Detection H2s and LEL  
 Fully Air Conditioned HVAC Integrated with F&G system  
 Deck Crane 2t @ 10m  
 Telescopic Crane 3t@35m,5t@15m,20t@14m

### AUXILIARY EQUIPMENT

Fresh Water Maker 1 x 20 t/d  
 Air Compressor 2 x 24m<sup>3</sup>/hr  
 Oily water separator 1 cu.m/hr



#### RADIO & NAVIGATION EQUIPMENT

GMDSS: Area 3

- 1 x Inmarsat C with SSASand LRIT
- 1 x MF/HF-DSC Radio Telephone
- 2 x VHF-DSC Radio Telephone
- 1 x SSB Transceiver 6 Channel DSC
- 1 x 96nm X-band Radar 19" display
- 1 x 96nm S-band 19" display
- 3 x VHF Portable radios
- 1 x Magnetic Compass
- 1 x Gyrocompass
- 1 x DGPS
- 1 x Autopilot
- 1XBWAS
- 1 x Echo Sounder ,Speed log

- 1 x Weather Fax Receiver
- 1 x Auto Telephone system
- 1 x Sound Powered Telephone system
- 1 x PA/Talkback System
- Local Area Network (LAN) connected

1XAIS

DPS-2, with following reference systems:

- 3 x Gyro Compass (2 x From radio vendor, the other one supplied by DP vendor)
- 3 x Wind sensors - 3 x VRUs
- 1 x Radius, 2xDGPS

#### DECK & AUX. EQUIPMENT

- Anchors 2 x 1710kgs PAC-14
- Chain 36mm U3 grade Tot 467.5M
- Anchor/ Mooring Windlass 1 x 6.16t @ 0 – 12m min C/W warping heads
- Tugger Winches 2 x 5t @ 12m min
- Capstans 2 x 5t @ 15m/ min

#### FIRE EXTINGUISHING SYSTEM

- Fi Fi Class 12 x 1750Cu.m @ 120m Hd
- Monitors Remote control 2 x 1200 Cu.M One with dual Foam /Water
- Fixed Co2 System Engine Room,E/G room
- Fixed Water Mist System Engine Room
- 6 x fireman outfits
- 2 x fire blankets for engine room and galley
- Fire Pump 75 Cu.M @ 80m Hd

#### LSA EQUIPMENT

- 1 x Diesel Powered Fast Rescue Boat for 15 persons. With Launch and Recover
- 2 x SOLAS certificated type life boats, each 42 men capacity.
- 4 x 20 man life rafts SOLAS approved each side. With two(2) davits.
- 8 x Lifebuoys SOLAS approved
- 89 Lifejackets as per SOLAS requirement
- 1 x EPIRB SOLAS approved
- 1 x Line Throwing Apparatus
- 12 x Parachute Distress Signals
- 2 x Orange Smoke Signals
- 1 x First Aid Kit
- 1 x daylight signaling light
- 1 x air horn