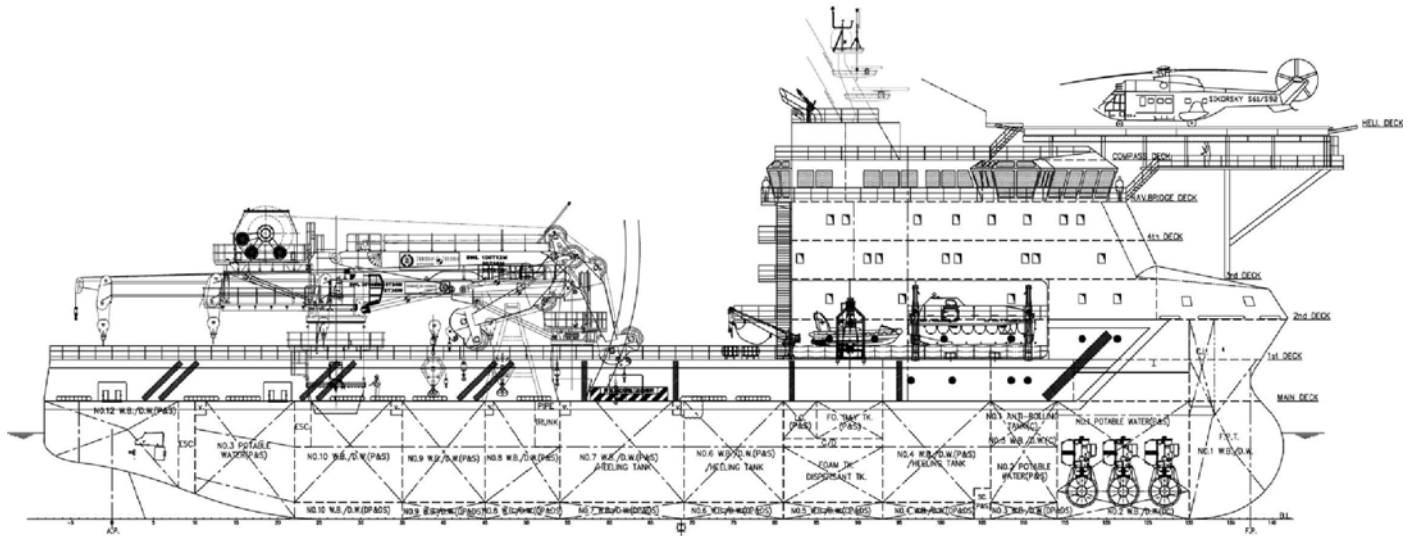


Brief Specification for 90M ROV Diving Support Vessel



90m	Diesel Electric ROV Diving Support Vessel	
	90m 潜水支持船	
总长	length overall:	90m
吃水	Draft Moulded:	6.2m
垂线间长	length B.P.:	82.4m
型宽	Breadth Moulded:	23m
型深	Depth Moulded:	8.5m
速度	Speed:	12Kn
主发电机	Main Genset-engine:	2350KW, CAT
推进系统	Propulsion system:	Two Azimuth controllable pitch propellers
消防系统	FIFI Equipment:	AZCUE
系柱托力	Bollard Pull:	
燃油	Fuel oil:	1200m3
淡水	Fresh water:	1000m3
载重量	Deadweight:	~4200T
货物甲板	Deck cargo area	1100m2
泥浆	Mud tank	
散料	Dry bulk cargo tank	
船级	Classification:	ABS
符号	ABS + A1 (E) Offshore Support Vessel (FFV 1, ROV Capable, DSV Capable) SPS + AMS DPS-2 + ACCU BWT UWILD MLC-ACCOM HELIDK RW CRC	

Design: Focal Marine & Offshore