



LENTO

INSTALLATION INSTRUCTIONS FOR LENTO TOILET SUITES

Lento toilet suites are installed with back-entry water connections. The Lento pans can be installed as P-trap, or S-trap using the universal plastic trap connector supplied with the pan.

Before installation, a visual check of the suite should be undertaken. The pan, seat and pan fixings come in one box and the cistern and valves are in a separate box. Ensure that nothing is damaged or missing.

The drawings on the back of this installation document show the “set-out” for the Lento pan. If it is to be installed as an S-Trap, the standard set-out can be anywhere from 70-165mm from the finished wall to the centre of the waste outlet. The two-piece plastic trap connector allows additional flexibility in the set-out if needed.

SETUP :

1. Establish the rough in positions for the waste outlet and the holes for the pan fixing brackets (see drawing overleaf).
2. Prepare the waste outlet according to the required set-out.

For S-Trap installations, cut the plastic trap connector to suit the set-out. (The groves on the trap connector are 10mm apart.)

For P-Trap installations, set the centre of the waste outlet 185mm from the finished floor level.

NB. A pan collar to connect the P-Trap to the waste outlet is not supplied with the pan.

3. Drill the holes in the floor for the fixing brackets, ensuring that they are 40mm inside the traced outline of the pan. (see separate instructions accompanying the bracket).

The installation of this toilet suite should be undertaken by a qualified and licensed plumber and in accordance with the National Plumbing Code AS/NZS 3500.2 Harmony sanitaryware products are designed to meet the appropriate Australian standards

For further information, visit www.harmonybathroomware.com.au

S-Trap Installation:

Suits Models:

HARMONY11900, HARMONY11950 (Fig.1)

1. Lubricate the rubber at the end of the plastic trap connector (using a water-based lubricant) and position it firmly in the waste outlet to a depth of between 30mm and 32mm.
2. Fix the trap connector to the wall using the rod and bracket.
3. Bolt the cistern to the pan.
4. Attach a flexible connector from the water outlet on the wall to the inlet at the top of the cistern.
5. Align the pan with the trap connector, then push it back firmly towards the wall so there is a firm connection.
6. Fill the cistern and ensure that water is at the correct level, and there are no leaks between the cistern and the pan. Any minor adjustments should be in line with the instructions accompanying the inlet valve.

FINAL STEPS:

1. Ensure the toilet suite is level and that the cistern is square to the wall.
2. Attach the cistern to the wall.
3. Attach the seat according to the separate instructions.
4. Fix the pan to the floor using the screws and caps provided.
5. Silicone the suite to the floor and remove any excess.
6. Flush the toilet (both half flush and full flush) to ensure it is functioning correctly.

CARE AND MAINTENANCE:

1. Clean the toilet suite with liquid detergent and a damp cloth.
2. Do not use water additives, or place them in the cistern.

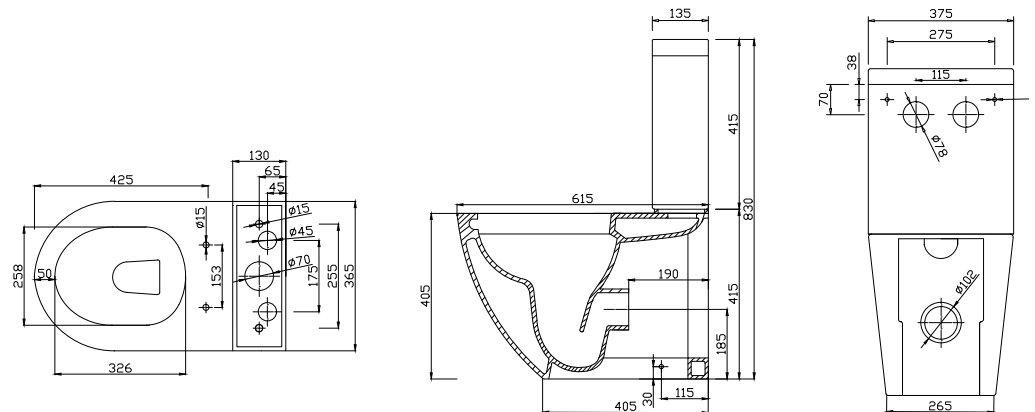
www.harmonybathroomware.com.au

LENTO

Back to Wall Toilet Suite Back Entry

(Fig.1)

HARMONY11900
HARMONY11950



For further information, visit www.harmonybathroomware.com.au

Disclaimer: Dimensions and set-outs contained in these instructions are correct at the time of publication. However, neither the manufacturer nor the distributor takes responsibility for printing errors. The manufacturer and the distributor reserve the right to vary specifications or delete toilet suite models without prior notification. A failure to follow these instructions, or a failure to have the product installed by a licensed tradesperson, may void the product's warranty.