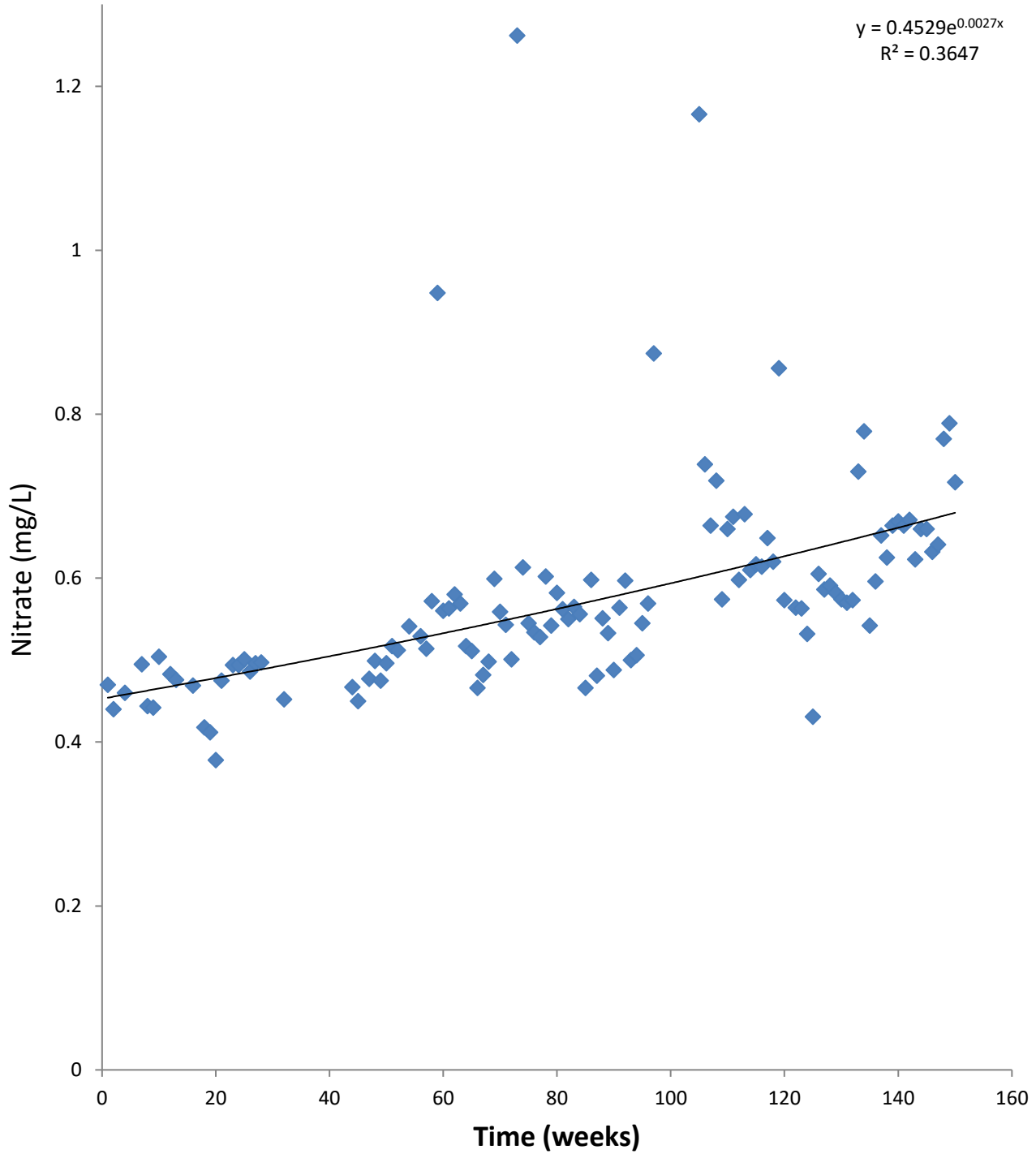


3.5 Years of Nitrate and Nitrogen Data from BCRET Sampling Location at C&H House Well

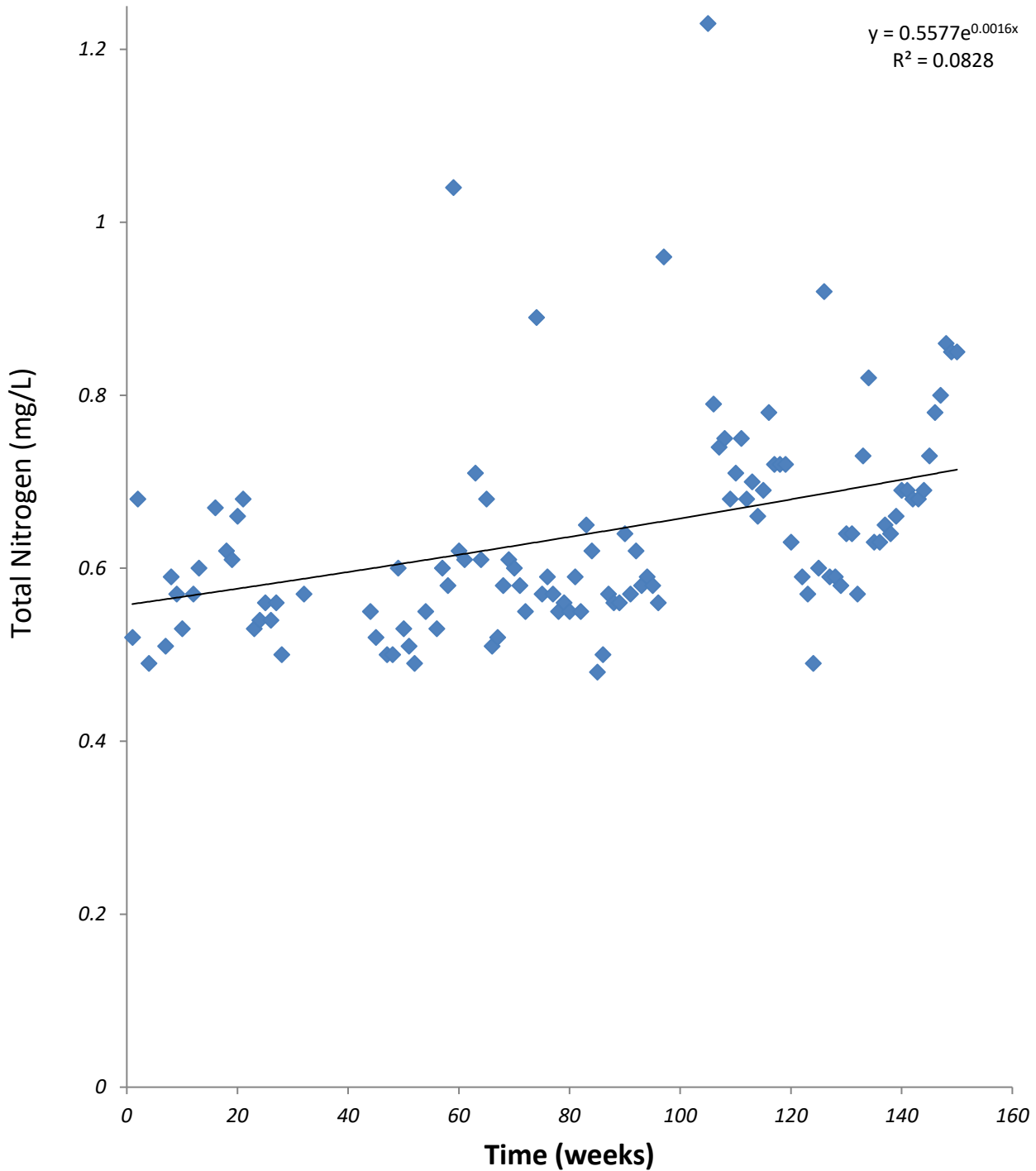
1March2014 - 30November2017



Groundwater nitrate increased 50% in 3.5 years.

3.5 Years of Nitrate and Nitrogen Data from BCRET Sampling Location at C&H House Well

1March2014 - 30November2017



Groundwater Total Nitrogen increased 27% in 3.5 years