



Walk. Move. Live.

SS / 18

DISCOVER  
THE SECRET  
INSIDE.

VIONIC®

VIONICSHOES.COM



FULL-CONTACT SUPPORT  
HUGS YOUR CURVES

HEEL SEAT STABILIZES  
AND POSITIONS FOOT

BALL-OF-FOOT CUSHIONING  
FOR ALL-DAY COMFORT



CONTOURED FOOTBED  
FOR ADDICTIVE SUPPORT

DEEP HEEL CUP PROVIDES  
ESSENTIAL STABILITY

FIRM YET FLEXIBLE MIDSOLE  
SUPPORTS BALANCE



---

## WHAT'S THE VIONIC SECRET?

IT'S WHAT SO MANY PEOPLE ARE RAVING ABOUT,  
THAT OH-SO AAH-MAZING SUPPORT CONCEALED INSIDE  
EVERY SHOE. IT'S ADDICTIVE. IT'S SIMPLE TO DESCRIBE,  
YET COMPLEX IN DESIGN. IT'S WHAT GIVES CUSTOMERS  
THE FREEDOM TO WALK, MOVE AND LIVE THEIR  
LIVES AS THEY DESIRE.

VIONIC BRINGS THE BEST OF INNOVATIVE BIOMECHANICAL  
SUPPORT TO THE SEASON'S ON-TREND LOOKS.  
STYLE. IT DOESN'T NEED TO HURT.

---

*Pacific High Tide*  
PG 16

*Palm Veranda*  
PG 11

## HERO STYLES

DON'T MISS OUT ON THESE KEY  
STYLES WHICH WILL BE FEATURED IN OUR  
SPRING ADVERTISING CAMPAIGN AS WE  
CONTINUE TO BUILD AWARENESS  
AND INTEREST IN VIONIC.

*Sunny Hattie*  
PG 27





*Rest Pippa*  
PG 13



*Tulum Vero*  
PG 5

★ See product listing for tentative advertised colors for each style.

# VIONIC®

## TULUM KADYN

**Style KADYN | MSRP \$129.95**  
**Start Ship February 2018**

Women's Whole & Half Sizes  
 Medium: 5, 6-10, 11 Wide: 6-10, 11

Tulum Kadyn is charming in its simplicity, with a three-inch jute wrapped espadrille wedge and a simple suede banded upper. The essential "goes-with-everything" slide, Kadyn's minimalistic silhouette is the sure complement to all your weekend favorites.

Upper: Suede  
 Footbed: Man-Made  
 Outsole: TPR  
 Heel Height: 3"



Blue, **BLU**



Caramel, **CRML**



Black, **BLK**

## TULUM VERO

**Style VERO | MSRP \$139.95**  
**Start Ship February 2018**

Women's Whole & Half Sizes  
 Medium: 5, 6-10, 11 Wide: 6-10, 11

Boardwalk meets date night with Tulum Vero, a classic espadrille wedge with simple-yet-elegant appeal. Straps in rich neutral tones are complemented by gorgeous metallic ring details. A buckled backstrap ensures a secure fit from day to night.

Upper: Leather or Suede  
 Footbed: Man-Made  
 Outsole: TPR  
 Heel Height: 3"



Olive, **OLI**



★ Tan, **TAN**



Black, **BLK**

## TULUM AINSLEIGH

**Style AINSLEIGH | MSRP \$139.95**  
**Start Ship February 2018**

Women's Whole & Half Sizes  
 Medium: 5, 6-10, 11 Wide: 6-10, 11

Modern and classic come together with Tulum Ainsleigh, a classic espadrille wedge silhouette with criss-crossed elastic straps and metallic or leather across the vamp and heel. Endlessly wearable, Ainsleigh's structured upper lends comfort and versatility to this elevated look.

Upper: Leather  
 Footbed: Man-Made  
 Outsole: TPR  
 Heel Height: 3"



Champagne, **CHPGN**



Dark Taupe, **DRKTPE**



Black, **BLK**

★ This icon represents national advertised styles.

💧 This icon represents color-ways that are weather resistant.



## ARUBA MARIS



Style MARIS | MSRP \$119.95

Start Ship December 2017

Women's Whole &amp; Half Sizes

Medium: 5, 6-10, 11 Wide: 6-10, 11

Sweet yet sexy, the Aruba Maris espadrille wedge features a leather or suede upper and grosgrain laces at the ankle for romantic whimsy.

Upper: Leather or Suede or Canvas

Footbed: Man-Made

Outsole: TR

Heel Height: 2.5"

Black, **BLK**Light Tan, **LTTAN**Pewter, **PWTR**Blue, **BLU**

## COAST SANTORINI



Style SANTORINI | MSRP \$109.95

Start Ship January 2018

Women's Whole &amp; Half Sizes

Medium: 5, 6-10, 11

The espadrille breaks new ground with Coast Santorini, a mule silhouette with a kid suede upper and contrasting tassel detail. Paired with spring whites or ripped denim, Coast Santorini adds an effortless flourish to any casual look.

Upper: Suede

Footbed: Microfiber Wrapped EVA

Outsole: TPR

Caramel, **CRML**Blue, **BLU**Black, **BLK**

## COAST SANDY



Style SANDY | MSRP \$119.95

Start Ship January 2018

Women's Whole &amp; Half Sizes

Medium: 5, 6-10, 11

The embodiment of carefree cool, Coast Sandy features a sueded upper in classic neutrals and warm tones. A lace-front vamp adds adjustability and interest.

Upper: Suede

Footbed: Microfiber Wrapped EVA

Outsole: TPR

Navy, **NVY**Caramel, **CRML**Olive, **OLI**Black, **BLK**

# VIONIC®

## PORT CALI



**Style CALI | MSRP \$119.95**  
**Start Ship March 2018**

Women's Whole & Half Sizes  
 Medium: 5, 6-10, 11 Wides: 6-10, 11

Polished yet a bit unexpected, the Port Cali demi-wedge boasts a smooth, streamlined Nappa leather wrapped footbed and t-strap upper. Delicate chevron details across the vamp add a hint of shine.

Upper: Leather  
 Footbed: Man-Made  
 Outsole: TR  
 Heel Height: 1.75"



Rust, **RST**



White, **WHT**



Red, **RED**



Black, **BLK**

## PORT FRANCES

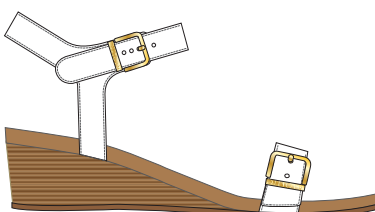


**Style FRANCES | MSRP \$119.95**  
**Start Ship March 2018**

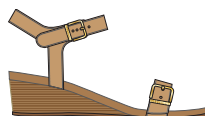
Women's Whole & Half Sizes  
 Medium: 5, 6-10, 11 Wides: 6-10, 11

Port Frances is a basic demi-wedge with a leather-wrapped heel, dual buckled straps and supple leather in essential neutral tones.

Upper: Leather  
 Footbed: Man-Made  
 Outsole: TR  
 Heel Height: 1.75"



White, **WHT**



Tan, **TAN**



Black, **BLK**

## PERK CARMEL



**Style 382CARMEL | MSRP \$139.95**  
**Start Ship New January 2018**  
**Start Ship Carryover November 2017**

Women's Whole & Half Sizes  
 Medium: 5, 6-10, 11

Perk Carmel's three-buckle strap silhouette is the height of sexy sophistication. In olive, saddle and black, it's the quintessential high heel for nights on the town.

Upper: Leather or Suede  
 Footbed: Man-Made  
 Outsole: Durable Rubber  
 Heel Height: 3"



Saddle, **SDDL**



Black, **BLK**



**NEW** Olive, **OLI**



## PERK ANIBEL

**Style ANIBEL | MSRP \$139.95**

**Start Ship January 2018**

Women's Whole & Half Sizes

Medium: 5, 6-10, 11

Bold and eye-catching, Perk Anibel's 3" heel and shield-like vamp strike a commanding pose. In neutrals, snake and denim, Anibel takes any ensemble to a new level.

Upper: Leather or Printed Leather or Denim

Footbed: Man-Made

Outsole: Durable Rubber

Heel Height: 3"



Natural Snake, **NATSNK**



Saddle, **SDDL**



Black, **BLK**



Denim, **DNM**

## PEP LORNE



**Style LORNE | MSRP \$129.95**

**Start Ship January 2018**

Women's Whole & Half Sizes

Medium: 5, 6-10, 11

Classic yet contemporary, the Pep Lorne heeled slide sandal comes in black or Caramel calf leather, with crossover straps across the vamp and hook-and-loop adjustability.

Upper: Leather

Footbed: Man-Made

Outsole: Durable Rubber

Heel Height: 2.5"



Saddle, **SDDL**



Black, **BLK**

## PEP SOLANA



**Style 382SOLANA | MSRP \$139.95**

**Start Ship New January 2018**

**Start Ship Carryover November 2017**

Women's Whole & Half Sizes

Medium: 5, 6-10, 11

Pep Solana's modest block-stacked heel lends stability as well as style to this warm-weather favorite. It features a strap across the vamp and ankle and easy hook-and-loop closures.

Upper: Leather

Footbed: Man-Made

Outsole: Durable Rubber

Heel Height: 2.5"



Black, **BLK**



**NEW** White, **WHT**



Saddle, **SDDL**

# VIONIC®

## JOY SERENA



**Style 322SERENA | MSRP \$149.95**  
**Start Ship November 2017**

Women's Whole & Half Sizes  
 Medium: 5, 6-10, 11 Wide: 6-10, 11

Joy Serena's zipper tassel detail and seam piping add interest to this low-heeled ankle boot.

Upper: Suede  
 Footbed: Removable Microfiber Wrapped EVA  
 Outsole: TR  
 Heel Height: 1.8"



NEW Olive, **OLI**



Griege, **GRG**



Black, **BLK**

## JOY DAYTONA



**Style DAYTONA | MSRP \$149.95**  
**Start Ship November 2017**

Women's Whole & Half Sizes  
 Medium: 5, 6-10, 11

Spring style is in full-force with Joy Daytona, the it-girl's go-to transitional bootie. A perforated suede upper adds visual interest and keeps feet cool, while a tasseled side-zip adds boho-western flair.

Upper: Suede  
 Footbed: Removable Microfiber Wrapped EVA  
 Outsole: TR  
 Heel Height: 1.8"



Caramel, **CRML**



Black, **BLK**





*Aruba Maris*  
PG 6



*Coast Santorini*  
PG 6



*Tulum Kadyń*  
PG 5

## PALM CATALINA

**Style CATALINA | MSRP \$99.95**  
**Start Ship January 2018**

Women's Whole & Half Sizes  
 Medium: 5, 6-10, 11

Understated chic is the name of the game with Palm Catalina, which features a sleek new construction for a lower-profile silhouette. Triple leather straps run across the vamp of this gorgeous flip flop, with a high-shine medallion detail adding just a hint of sass.

Upper: Leather  
 Footbed: Leather Wrapped EVA  
 Outsole: TR



Pink/Red, **PNKRED**



Mixed Metallic, **MIXMTL**



Tan, **TAN**



Green/Blue, **GRNBLU**



Black, **BLK**

## PALM VERANDA

**Style VERANDA | MSRP \$109.95**  
**Start Ship January 2018**

Women's Whole & Half Sizes  
 Medium: 5, 6-10, 11

Palm Veranda's low-profile construction features a thin white outsole and a leather-wrapped footbed. Criss-crossing straps across the vamp are secured with a metal medallion, while a backstrap adds adjustability.

Upper: Leather  
 Footbed: Leather Wrapped EVA  
 Outsole: TR



Navy, **NAVY**



★ White, **WHT**



Tan, **TAN**



## PALM GALA



**Style GALA | MSRP \$119.95**  
**Start Ship January 2018**

Women's Whole & Half Sizes  
 Medium: 5, 6-10, 11

Wallflowers beware. Palm Gala is sure to make a grand entrance wherever she goes! Luxuriant metallic leather and ample faux gemstones make up the vamp of this triangle thong flip flop. A gorgeous leather-wrapped footbed adds a hint of sheen to this low-profile silhouette.

Upper: Leather  
 Footbed: Leather Wrapped EVA  
 Outsole: TR



Gold, **GLD**



Pewter, **PWTR**

## PALM BOCA



**Style BOCA | MSRP \$119.95**  
**Start Ship January 2018**

Women's Whole & Half Sizes  
 Medium: 5, 6-10, 11

So much sparkle you'll need to slip on your shades! Palm Boca is opulence defined with a shimmering snake t-strap adorned with faux gemstones.

Upper: Printed Leather  
 Footbed: Leather Wrapped EVA  
 Outsole: TR



Pewter Snake, **PWTRSNK**



Gold Snake, **GLDSNK**



Black Snake, **BLKSNK**

# VIONIC®

## REST BELLA II



**Style 44BELLAI | MSRP \$74.95**  
**Start Ship November 2017 or**  
**February 2018**

Women's Whole & Half Sizes  
 Medium: 5, 6-10, 11 Wide: 6-11  
 Narrow: 7-10

The best-selling Rest Bella II toe-post sandal is a true beauty with a dainty bow detail.

Upper: Man-Made or Denim or Natural Cork  
 Footbed: Microfiber Wrapped EVA  
 Outsole: Durable Rubber

Patent Pending



NEW 11/1 White Floral, **WHTFLRL**



NEW 2/1 Yellow, **YLLW**



NEW 2/1 Blue, **BLU**



NEW 11/1 Red, **REDPNT**



White, **WHT**



Pewter, **PWTR**



Gold Cork, **GLDCRK**



Denim, **DNM**



Tortoise, **TRT**



Black, **BLK**

## REST PIPPA



**Style PIPPA | MSRP \$99.95**  
**Start Ship November 2017**

Women's Whole & Half Sizes  
 Medium: 5, 6-10, 11 Wide: 6-11

Tie one on with Rest Pippa, a gorgeous knotted strap flip flop in lustrous, soft leather.

Upper: Leather  
 Footbed: Microfiber Wrapped EVA  
 Outsole: Durable Rubber

Patent Pending



Champagne, **CHPGN**



White, **WHT**



★ Rose Gold, **RSGLD**



Black, **BLK**

## REST KIRRA



**Style KIRRA | MSRP \$99.95**  
**Start Ship December 2017**

Women's Whole & Half Sizes  
 Medium: 5, 6-10, 11 Wide: 6-11

Your favorite wear-everywhere sandal has arrived! Rest Kirra combines a triangular thong leather upper with subtle metal rivets and buckle details. A backstrap adds stability and adjustability.

Upper: Leather or Printed Leather  
 Footbed: Microfiber Wrapped EVA  
 Outsole: Durable Rubber

Patent Pending



Brown, **BRN**



White, **WHT**



Natural Snake, **NATSNK**



Black, **BLK**



## REST MIAMI



**Style MIAMI | MSRP \$99.95**

**Start Ship January 2018**

Women's Whole & Half Sizes  
Medium: 5, 6-10, 11 Wide: 6-11

Playing upon the success of the Lizbeth t-strap, Rest Miami offers the same silhouette women have come to love with a lustrous new gold or silver detail across the vamp. Effortlessly wearable and endlessly comfortable, Rest Miami delivers style all season long.

Upper: Leather or Natural Cork  
Footbed: Microfiber Wrapped EVA  
Outsole: Durable Rubber

Patent Pending



Orange, **ORNG**



White, **WHT**



Gold Cork, **GLDCRK**



Navy, **NVY**



Black, **BLK**

## REST PAULIE



**Style PAULIE | MSRP \$109.95**

**Start Ship January 2018**

Women's Whole & Half Sizes  
Medium: 5, 6-10, 11

Exquisite leatherwork and metallic detailing make up the floral appliques on Rest Paulie, a must-have t-strap sandal with all the trimmings of summer.

Upper: Leather or Patent Leather  
Footbed: Microfiber Wrapped EVA  
Outsole: Durable Rubber

Patent Pending



Tan, **TAN**



Champagne, **CHPGN**



Red, **RED**



Black Patent, **BLKPNT**

## REST OPHELIA



**Style OPHELIA | MSRP \$109.95**

**Start Ship January 2018**

Women's Whole & Half Sizes  
Medium: 5, 6-10, 11

Slide into spring with Rest Ophelia, a double-strap sandal with two points of adjustability. Floral appliques adorn the vamp.

Upper: Leather or Patent Leather  
Footbed: Microfiber Wrapped EVA  
Outsole: Durable Rubber

Patent Pending



Champagne, **CHPGN**



Black Patent, **BLKPNT**

## REST DORIE



**Style 341DORIE | MSRP \$79.95**

**Start Ship November 2017**

Women's Whole Sizes  
Medium: 5-11

Rest Dorie's simple silhouette gives way to serious support. With overlapping straps, this slide provides modest coverage in three neutral color ways.

Upper: Printed Man-Made or Natural Cork  
Footbed: Microfiber Wrapped EVA  
Outsole: Durable Rubber

Patent Pending



White Snake, **WHTSNK**



Gold Cork, **GLDCRK**



Black Snake, **BLKSNK**

## REST SAMOA



**Style 341SAMOA | MSRP \$89.95**

**Start Ship November 2017**

Women's Whole Sizes  
Medium: 5-11 Wide: 6-11

Rest Samoa is the optimal combination of gilded style and casual comfort. With a hint of gore and metallic detailing, it's an elegant take on a resort-ready style.

Upper: Printed Suede  
Footbed: Microfiber Wrapped EVA  
Outsole: Durable Rubber

Patent Pending



**NEW** Navy, **NVY**



Gold, **GLD**



Pewter, **PWTR**



Black, **BLK**

## REST FARRA



**Style FARRA | MSRP \$89.95**

**Start Ship November 2017**

Women's Whole & Half Sizes  
Medium: 5, 6-10, 11 Wide: 6-11

Rest Farra brings delicate metallic detailing to a supportive, stable silhouette. With three straps for customization, Farra delivers practical features with a side of style.

Upper: Man-Made or Natural Cork  
Footbed: Microfiber Wrapped EVA  
Outsole: Durable Rubber

Patent Pending



Red, **REDPNT**



Gold Cork, **GLDCRK**



Navy, **NVYPNT**



Black Patent, **BLKPNT**

## REST AMBER



**Style 44AMBER | MSRP \$79.95**

**Start Ship November 2017**

Women's Whole Sizes  
Medium: 5-12 Wide: 6-11

The best-selling Rest Amber casual sandal offers hook-and-loop closures on the vamp and backstrap for maximum adjustability.

Upper: Man-Made or Natural Cork  
Footbed: Microfiber Wrapped EVA  
Outsole: Durable Rubber

Patent Pending



**NEW** White Patent, **WHTPNT**



Gold Cork, **GLDCRK**



Black Croco, **BLKCROC**

## PACIFIC HIGH TIDE



**Style 380HIGHTIDE | MSRP \$69.95**

**Start Ship November 2017**

Women's Whole Sizes

Medium: 5-11 Wide: 6-11

Taking the toe-post sandal to new heights, Pacific High Tide comes in five versatile color ways. With a dual-density midsole for optimal comfort, it's the warm-weather essential you'll want to pack for every excursion.

Upper: Leather & Textile or Gold Cork & Textile  
Footbed: EVA

Outsole: Durable Rubber

Patent Pending



**NEW** Turquoise, **TRQS**



**NEW** Gold Cork, **GLDCRK**



**NEW** Navy/Navy, **NVYNVY**



Black Floral, **BLKFLRL** ★



White, **WHT**



Pewter, **PWTR**



Tan Leopard, **TANLPRD**



Red Leopard, **REDLPRD**



Black, **BLK**

## PACIFIC MIMI



**Style MIMI | MSRP \$89.95**

**Start Ship February 2018**

Women's Whole Sizes

Medium: 5-11

Summer has never looked sweeter! Pacific Mimi's raffia-wrapped midsole begs for picnics in the park or brunch in the sun. With a patent upper and darling floral detail across the vamp, this platform is sure to upstage even the cutest sundress.

Upper: Patent Leather

Footbed: Man-Made

Outsole: Durable Rubber

Patent Pending



White, **WHT**



Pink, **PNK**



Black, **BLK**

## PACIFIC MARBELLA



**Style MARBELLA | MSRP \$99.95**

**Start Ship February 2018**

Women's Whole Sizes

Medium: 5-11

A cork-wrapped platform midsole and supple kidsuede upper make Pacific Marbella an obvious choice for everyday summer fun. With a small buckle detail for adjustability, this simple sandal makes for easy wearing during the warm-weather months.

Upper: Suede

Footbed: Man-Made

Outsole: Durable Rubber

Patent Pending



Caramel, **CRML**



Red, **RED**



Black, **BLKBLK**



## PACIFIC NAPLES



**Style NAPLES | MSRP \$99.95**

**Start Ship November 2017**

Women's Whole Sizes

Medium: 5-11

Rock out with Pacific Naples, a platform with equal parts glamour and edge. Rhinestones adorn the vamp, adding more than a hint of sparkle.

Upper: Leather with Man-Made

Footbed: EVA

Outsole: Durable Rubber

Patent Pending



Blush, **BLUSH**



Champagne, **CHPGN**



Pewter, **PWTR**



Black, **BLK**

## PACIFIC RIO



**Style RIO | MSRP \$79.95**

**Start Ship November 2017**

Women's Whole Sizes

Medium: 5-11

The platform gets an upgrade with Pacific Rio, a beach-ready slide with three adjustable straps across the vamp. A metal buckle detail brings both function and style to this classic silhouette, which adds just the right amount of height.

Upper: Natural Cork or Man-Made

Footbed: EVA

Outsole: Durable Rubber

Patent Pending



White Snake, **WHTSNK**



Gold Cork, **GLDCRK**



Red, **RED**



Black Snake, **BLKSNK**

## TIDE II



**Style 44TIDEII | MSRP \$64.95**  
**Start Ship November 2017**

Women's Whole Sizes  
 Medium: 5-12

An instant classic, our iconic Tide II flip flop now features more exciting variations. With classic neutrals, metallics and exotic prints, there's more to love than ever before.

Upper: Leather & Textile or Natural Cork & Textile  
 Footbed: EVA  
 Outsole: Durable Rubber

US Patent D770743, D711078, D723787



**NEW** Light Blue, **LTBLU**



**NEW** Fuchsia, **FSA**



White, **WHT**



Grey Floral, **GRYFLRL**



Pewter Metallic, **PWTRMTL**



Bronze Metallic, **BRNZMTL**



Gold Cork, **GLDCRK**



Brown Leopard, **BRNLPRD**



Black Floral, **BLKFLRL**



Navy, **NVY**



Black, **BLK**

## TIDE JEWEL



**Style TIDEJEWEL | MSRP \$79.95**  
**Start Ship February 2018**

Women's Whole Sizes  
 Medium: 5-12

The Tide sandal gets a high-shine make-over with Tide Jewel. Combining the support of the iconic Tide with an elegant snake-printed upper, Tide Jewel is more than just a flip flop.

Upper: Printed Leather  
 Footbed: EVA  
 Outsole: Durable Rubber

US Patent D711078, D723787



Pewter Snake, **PWTRSNK**



Black Snake, **BLKSNK**

## TIDE RHINESTONES



**Style 340TIDERS | MSRP \$74.95**  
**Start Ship December 2017**

Women's Whole Sizes  
 Medium: 5-12

The rock star of the Tide family, Tide Rhinestones is designed with the rebel in mind. Classic neutral color ways and eye-catching bling are sure to earn a place in the spotlight.

Upper: Suede  
 Footbed: EVA  
 Outsole: Durable Rubber

US Patent D770743, D711078, D723787



**NEW** Blush, **BLUSH**



Champagne, **CHPGN**



Navy, **NVY**



Black, **BLK**

# VIONIC®

## TIDE SPORT



**Style 340TIDESPRT | MSRP \$64.95**  
**Start Ship December 2017**

Women's Whole Sizes  
 Medium: 5-12

A sleek update to the classic Tide sandal, Tide Sport features a trendy white outsole and patent straps in two bold color ways.

Upper: Leather & Textile  
 Footbed: EVA  
 Outsole: Durable Rubber

US Patent D770743, D711078, D723787



NEW Tan/Orange, **TAN**



NEW Light Blue, **LTBLU**



Navy, **NAVY**



Black, **BLK**

## BAY ALANI

**Style ALANI | MSRP \$69.95**  
**Start Ship January 2018**

Women's Whole Sizes  
 Medium: 5-12

Modern yet understated, the Bay Alani slide features an adjustable upper and white or black midsole. In brilliant metallics or black patent, this simple silhouette is anything but basic.

Upper: Man-Made  
 Footbed: EVA  
 Outsole: Durable Rubber



Silver, **SLV**



White, **WHT**



Gold, **GLD**



Black Patent, **BLKPNT**

## UNISEX WAVE



**Style 44WAVE | MSRP \$59.95**  
**Start Ship Immediate**

Unisex Whole Sizes  
 Medium: 5-14

Wave's soft, padded jersey-lined uppers and nylon webbing toe-post makes it the ultimate flip flop for maximum comfort.

Upper: Nylon Webbing  
 Footbed: EVA  
 Outsole: Durable Rubber

US Patent D592840



Chocolate, **CHLT**



Khaki, **KHA**



Black, **BLK**



*Splendid Midi*  
PG 25



*Splendid Syra*  
PG 26

*Splendid Lou*  
PG 25

# VIONIC®

## WISE REAGAN

**Style 371REAGAN | MSRP \$129.95**  
**Start Ship December 2017**

Women's Whole & Half Sizes  
 Medium: 5, 6-10, 11

Slide into style with the Wise Reagan tasseled mule. Effortlessly chic, the Wise Reagan's leather or patent leather stacked heel give it a posh feel.

Upper: Leather or Patent Leather  
 Footbed: Injected Insole with Man-Made Sock  
 Outsole: Durable Rubber  
 Heel Height: 1"



Silver Metallic, **SLV**



White, **WHT**



Black Patent, **BLKPNT**

## WISE HADLEY

**Style 356HADLEY | MSRP \$139.95**  
**Start Ship December 2017**

Women's Whole & Half Sizes  
 Medium: 5, 6-10, 11

A fresh take on the Oxford, Wise Hadley's laceless silhouette is comfier and sleeker than the traditional version. In white leather or black patent, Wise Hadley is sure to draw compliments wherever you go. Ships with optional laces.

Upper: Leather  
 Footbed: Injected Insole with Man-Made Sock  
 Outsole: Durable Rubber  
 Heel Height: 1"



White, **WHT**



Black Patent, **BLKPNT**

## HONOR ASHBY

**Style 356ASHBY | MSRP \$139.95**  
**Start Ship November 2017**

Women's Whole & Half Sizes  
 Medium: 5, 6-10, 11 Wide: 6-10, 11

Honor Ashby features a stitch-and-turn construction, where the upper is stitched to the outsole and the biomechanical footbed is inset for a sleek, low-profile silhouette. A rubber outsole lends practicality to this chic casual.

Upper: Leather or Haircalf  
 Footbed: Removable Microfiber Wrapped EVA  
 Outsole: Durable Rubber

Patent Pending



**NEW** Red, **RED**



**NEW** Champagne, **CHPGN**



Tan Leopard, **TANLPRD**



Khaki, **KHA**



Black, **BLK**

## SNUG ADELINE

**Style ADELINE | MSRP \$119.95**  
**Start Ship December 2017**

Women's Whole & Half Sizes  
 Medium: 5, 6-10, 11

The ultimate transitional shoe has landed with Snug Adeline, a mule-style slide that provides cool comfort with classic styling. Leather uppers are accented by piping and a metallic horsebit detail across the vamp.

Upper: Leather  
 Footbed: Microfiber Wrapped EVA  
 Outsole: TPR



Caramel, **CRML**



Red, **RED**



Navy/White, **NVY**



Black, **BLK**

## GEM HARTLEY

**Style HARTLEY | MSRP \$119.95**  
**Start Ship January 2018**

Women's Whole & Half Sizes  
 Medium: 5, 6-10, 11 Wide: 6-10, 11

The pointed-toe flat gets an airy lift with Gem Hartley. Abstract cutouts throughout the upper give this work-to-weekend staple a decidedly spring-like feel.

Upper: Leather  
 Footbed: Microfiber Wrapped EVA  
 Outsole: TR

US Patent D615742



Black, **BLK**



Champagne, **CHPGN**



Pewter, **PWTR**

## GEM POSEY

**Style 359POSEY | MSRP \$119.95**  
**Start Ship November 2017**

Women's Whole & Half Sizes  
 Medium: 5, 6-10, 11 Wide: 6-10, 11

Gem Posey is your go-to flat from work to weekend. Buttery-soft kid suede and a perforated vamp make this pointed-toe flat anything but basic.

Upper: Kid Suede  
 Footbed: Microfiber Wrapped EVA  
 Outsole: TR

US Patent D615742



**NEW** Red, **RED**



Dark Taupe, **DRKTPE**



**NEW** Navy, **NVY**



Black, **BLK**



# VIONIC®

## SPARK SURIN



**Style 359SURIN | MSRP \$119.95**  
**Start Ship December 2017**

Women's Whole & Half Sizes  
 Medium: 5, 6-10, 11 Wide: 6-10, 11

The Spark Surin is the must have transitional ballet flat, with lovely laser cut patterns adorning the shoe's supple leather upper and a sweet bow detail across the vamp.

Upper: Leather  
 Footbed: Removable Microfiber Wrapped EVA  
 Outsole: TR

US Patent D615742



NEW White, **WHT**



Nude, **NDE**



Gold, **GLD**



Pewter, **PWTR**



Black, **BLK**

## SPARK MINNA



**Style 359MINNA | MSRP \$119.95**  
**Start Ship November 2017**

Women's Whole & Half Sizes  
 Medium: 5, 6-10, 11 Wide: 6-10, 11  
 Narrow: 7-10

Leather or gold cork make up the body of this cute, classic ballet flat.

Upper: Leather or Natural Cork  
 Footbed: Removable Microfiber Wrapped EVA  
 Outsole: TR

US Patent D615742



NEW Cream/Navy, **NVYCRM**



NEW Rose/Black, **BLUSH**



NEW Gold Cork, **GLDCRK**



Black, **BLK**

## MOD DAPHNE



**Style 389DAPHNE | MSRP \$139.95**  
**Start Ship November 2017**

Women's Whole & Half Sizes  
 Medium: 5, 6-10, 11 Wide: 6-11

A classic go-to with just the right amount of height, Mod Daphne's leather is complimented by a shiny patent toe-cap. A sweet bow across the vamp adds visual interest.

Upper: Leather  
 Footbed: Injected Insole with Breathable Man-made & Microfiber Sock  
 Outsole: German Rubber Outsole  
 Heel Height: 1.18"

Patent Pending



Navy, **NVY**



Tan, **TAN**



Black, **BLK**

## KIT JOSIE



**Style 389JOSIE | MSRP \$139.95**

**Start Ship November 2017**

Women's Whole & Half Sizes

Medium: 5, 6-10, 11 Wide: 6-10, 11

Kit Josie features a specially-formulated insole board molded with biomechanical contours, a layer of foam with added metatarsal dome padding to support and cushion the forefoot, a rubber outsole for traction, and premium upper materials.

Upper: Leather or Printed Leather or Suede or Denim

Footbed: Injected Insole with Breathable Man-made & Microfiber Sock

Outsole: German Rubber Outsole

Heel Height: 1.93"

Patent Pending



NEW Denim, **DNM**



NEW Red, **RED**



Natural Snake, **NATSNK**



Black, **BLK**



Black/Black, **BLKBLK**

## LUX CAMDEN



**Style 389CAMDEN | MSRP \$139.95**

**Start Ship November 2017**

Women's Whole & Half Sizes

Medium: 5, 6-10, 11 Wide: 6-10, 11

Lux Camden is work-to-weekend ready in three essential colorways of supple kid-suede, as well as a classic black leather. With a 2.4" covered wedge and stretch-infused topline, Lux Camden melds polished practicality with hidden comfort features.

Upper: Leather or Suede

Footbed: Injected Insole with Breathable Man-made & Microfiber Sock

Outsole: German Rubber Outsole

Heel Height: 2.4"

Patent Pending



Tan, **TAN**



Black Suede, **BLKBLK**



Black, **BLK**

## SPLENDID LOU



**Style LOU | MSRP \$99.95**  
**Start Ship January 2018**

Women's Whole & Half Sizes  
 Medium: 5, 6-10, 11

Splendid Lou is the cupsole reimagined, with a minimalist aesthetic and a crossover strap across the vamp. In lustrous nubuck and leather, Lou offers the comfort of a cupsole in sandal form.

Upper: Leather & Nubuck  
 Footbed: Microfiber & Man-Made Covered EVA  
 Outsole: Durable Rubber

US Patent D615742  
 Patent Pending



White, **WHT**



Champagne, **CHPGN**



Grey, **GRY**



Navy, **NVY**



Black, **BLK**

## SPLENDID MIDI



**Style 356MIDI | MSRP \$129.95/\$139.95**  
**Start Ship October 2017**

Women's Whole & Half Sizes  
 Medium: 5, 6-10, 11

The Splendid Midi slip-on is a fun yet polished bestseller that now comes in more versatile color-ways. This casual sneaker is sure to become an essential you can't live without.

Upper: Printed Leather or Nubuck or Denim  
 Footbed: Removable Microfiber Wrapped EVA  
 Outsole: Durable Rubber

US Patent D615742  
 Patent Pending



**NEW** Denim, **DNM**



**NEW 1/1** White Floral, **WHTFLRL**  
**\$139.95 | style MIDIFLRL**



**NEW** Champagne, **CHPGN**



Grey, **GRY**



Natural Snake, **BLK**



Black, **BLK**

## SPLENDID MIDI PERF



**Style 356MIDI PERF | MSRP \$129.95**  
**Start Ship November 2017**

Women's Whole & Half Sizes  
 Medium: 5, 6-10, 11

With the Splendid Midi cupsole sneaker, casual has never looked so cool. This slip-on features a perforated leather upper and twin gore panels for all-day walkability.

Upper: Leather or Nubuck  
 Footbed: Removable Twill Wrapped EVA  
 Outsole: Durable Rubber

US Patent D615742  
 Patent Pending



**★ NEW** Light Blue, **LTBLU**



White, **WHT**



**NEW** Dusty Pink, **DSTPNK**



Grey, **GRY**



Black, **BLK**



## SPLENDID SYRA



**Style 355SYRA | MSRP \$129.95/\$139.95**  
**Start Ship January 2018**

Women's Whole & Half Sizes  
 Medium: 5, 6-10, 11

Splendid Syra is a casual lace-up with understated sophistication. In smooth, supple leather, its low-profile silhouette makes it both stylish and functional.

Upper: Leather  
 Footbed: Removable Microfiber Wrapped EVA  
 Outsole: Durable Rubber

US Patent D615742  
 Patent Pending



**NEW** White Floral, **WHTFLRL**  
**\$139.95 | style SYRAFLRL**



White, **WHT**



Black, **BLK**

## SPLENDID BOBBI



**Style BOBBI | MSRP \$129.95**  
**Start Ship January 2018**

Women's Whole & Half Sizes  
 Medium: 5, 6-10, 11

The cupsole trend continues with Splendid Bobbi, a funky take on this minimalist silhouette. Three hook-and-loop straps across the vamp provide adjustability and playful styling, accented by metallic piping and detailing throughout.

Upper: Leather  
 Footbed: Removable Man-Made Wrapped EVA  
 Outsole: Durable Rubber

US Patent D615742  
 Patent Pending



White/Champagne, **WHT**



Black, **BLK**

## SUNNY RAE

**Style RAE | MSRP \$89.95**

**Start Ship January 2018**

Women's Whole Sizes  
Medium: 5, 6-10, 11

Combining the comfort of a slip-on sneaker with the charm of an espadrille, the Sunny Rae sneakerdrille's canvas upper and twin-gore paneling make it the perfect comfy casual for any weekend outing.

Upper: Canvas  
Footbed: Twill  
Outsole: Durable Rubber



Ivory, **IVRY**



Light Pink, **LTPNK**



Navy, **NVY**

## SUNNY HATTIE

**Style HATTIE | MSRP \$89.95**

**Start Ship January 2018**

Women's Whole & Half Sizes  
Medium: 5, 6-10, 11

Sunny Hattie's soft canvas upper and cool, casual espadrille-infused outsole make this sneaker the new standard for summer.

Upper: Canvas  
Footbed: Removable Microfiber Wrapped EVA  
Outsole: Durable Rubber



Ivory, **IVRY**



Red, **RED**



Purple, **PRPL**



Black, **BLK**

## DELIGHT APRIL



**Style 355APRIL | MSRP \$129.95**

**Start Ship December 2017**

Women's Whole & Half Sizes  
Medium: 5, 6-10, 11

The epitome of casual cool, Delight April's slim silhouette and solid white midsole give this comfy style a hint of chic.

Upper: Leather  
Footbed: Removable Man-Made Wrapped EVA  
Outsole: Durable Rubber



Black, **BLK**



Grey Metallic, **GRYMTL**

## DELIGHT EDIE



**Style 355EDIE | MSRP \$129.95**

**Start Ship December 2017**

Women's Whole & Half Sizes  
Medium: 5, 6-10, 11

Delight Edie is low in profile but high in support, with a quilted leather upper and durable rubber outsole.

Upper: Leather  
Footbed: Removable Man-Made Wrapped EVA  
Outsole: Durable Rubber

US Patent D615742



Rose Gold, **RSGLD**



Silver, **SLV**



Black, **BLK**

*Fresh Joey*  
PG 29



*Splendid Midi Perf*  
PG 25



*Fresh Joey*  
PG 29



*Fresh Riley*  
PG 29



## FRESH JOEY



**Style JOEY | MSRP \$129.95**  
**Start Ship December 2017**

Women's Whole & Half Sizes  
 Medium: 5, 6-10, 11 Wide: 6-10, 11

Fresh Joey is the casual-chic sneaker you won't want to take off all season long. With velvety-soft tumbled nubuck in four must-have color ways, this low-profile lace up is sure to become a favorite for around-town fun.

Upper: Nubuck  
 Footbed/Outsole: Co-Molded Proprietary EVA with Memory Foam Compound with Rubber Outsole

Patent Pending



Dusty Pink, **DSTPNK**



Light Grey, **LTGRY**



Navy, **NVY**



Black, **BLK**

## FRESH RILEY



**Style 355RILEY | MSRP \$129.95**  
**Start Ship November 2017**

Women's Whole & Half Sizes  
 Medium: 5, 6-10, 11 Wide: 6-10, 11

Fresh Riley casual lace-up features a fully-integrated, synergistic base unit. Fresh Riley features lightweight flexibility and a deconstructed feel, nubuck and leather uppers with minimal seams and laser perforation detailing.

Upper: Leather & Nubuck  
 Footbed/Outsole: Co-Molded Proprietary EVA with Memory Foam Compound with Rubber Outsole

Patent Pending



Sand, **SND**



Grey, **GRY**



Black, **BLKBLK**



## BRISK PACE

**Style PACE | MSRP \$89.95**

**Start Ship January 2018**

Women's Whole & Half Sizes  
Medium: 5, 6-10, 11 Wide: 6-10, 11

The maryjane gets an active makeover with Brisk Pace. Pace features an athletic EVA midsole for optimal support and comfort, while an adjustable elastic strap across the vamp ensures stability.

Upper: Textile & Man-Made  
Footbed: Removable Mesh Covered EVA  
Outsole: Durable Rubber



Grey, **GRY**



Blue/Teal, **BLUTEL**



Black, **BLK**

## BRISK DASH

**Style DASH | MSRP \$99.95**

**Start Ship November 2017**

Women's Whole & Half Sizes  
Medium: 5, 6-10, 11 Wide: 6-10, 11

As its name would suggest, Brisk Dash is a must-have for the girl on the go. Dash stays put thanks to an adjustable elastic strap with hook-and-loop closure, while a low-profile athletic EVA midsole ensures that feet stay supported all day long.

Upper: Textile & Man-Made  
Footbed: Removable Mesh Covered EVA  
Outsole: Durable Rubber



Grey/Mint, **GRYMNT**



Navy/Light Blue, **NVYLTBLU**



Black/Charcoal, **BLKCHRCL**

## BRISK MILES

**Style 335MILES | MSRP \$99.95**

**Start Ship November 2017**

Women's Whole & Half Sizes  
Medium: 5, 6-10, 11 Wide: 6-10, 11

Ready for action, Brisk Miles combines a dual-layer breathable mesh upper with a lightweight EVA midsole for a shoe that's as easy-breezy as its name. Features TPU overlays that increase stability as well as 1st Ray technology in the insole. An ombre effect on the midsole and patterned laces add novelty.

Upper: Textile & Man-Made  
Footbed: Removable Mesh Covered EVA  
Outsole: Durable Rubber

US Patent D615742



Blue/Teal, **BLUTEL**



Grey, **GRY**



**NEW** Pink/Orange, **PNKORNG**



Black, **BLK**

# VIONIC®

## AGILE KEA



**Style 336KEA | MSRP \$99.95**  
**Start Ship November 2017**

Women's Whole & Half Sizes  
 Medium: 5, 6-10, 11 Wide: 6-10, 11

Agile Kea is a simple slip-on with serious support. With a colorful mesh upper and twin gore panels on the vamp for ease of movement, all-around comfort is the name of the game.

Upper: Textile & Man-Made  
 Footbed: Removable Mesh Covered EVA  
 Outsole: Durable Rubber



**NEW** Light Blue, **LTBLU**



Navy, **NVY**



Black, **BLK**



Black/Black, **BLKBLK**

## FLEX SIERRA



**Style 335SIERRA | MSRP \$129.95**  
**Start Ship November 2017**

Women's Whole & Half Sizes  
 Medium: 5, 6-10, 11 Wide: 6-10, 11

With a winning blend of technical features, the Flex Sierra showcases an engineered knit upper for added breathability and a dual-density outsole, as well as 1st Ray technology for added range of motion under the first metatarsal. Rubber elements add traction under foot.

Upper: Textile  
 Footbed: Removable Mesh Covered EVA  
 Outsole: Durable Rubber



**NEW** White/Black, **WHTBLK**



Navy, **NVY**



Black/Charcoal, **BLKCHRL**

## FLEX SATIMA



**Style 335SATIMA | MSRP \$139.95**  
**Start Ship November 2017**

Women's Whole & Half Sizes  
 Medium: 5, 6-10, 11

Characterized by supreme stability, Flex Satima features a substantial dual-density outsole, 1st Ray technology and a sturdy, multi-material upper. Contrasting laces and lining complement the serious support inside.

Upper: Textile & Man-Made  
 Footbed: Removable Mesh Covered EVA  
 Outsole: Durable Rubber



Navy, **NVY**



**NEW** White, **WHT**



Grey/Yellow, **GRYYLW**



Black, **BLK**

## VIO-NRG ELATION 1.0



**Style 335ELATION1 | MSRP \$139.95**  
**Start Ship January 2018**

Women's Whole & Half Sizes  
 Medium: 5, 6-10, 11

Developed with synergy in mind, the Elation performance walker's insole, midsole and outsole are engineered into a single dual-density unit for improved dynamic function. Memory foam lines the insole for instant comfort, and 1st Ray technology facilitates improved flexibility beneath the first metatarsal.

Upper: Man-Made & Textile  
 Footbed/Outsole: Co-Molded Proprietary EVA with Memory Foam Compound with Rubber Outsole

Patent Pending



**NEW** Pink/Purple, **DRKPRPLPNK**



**NEW** Blue/Yellow, **BLUYLW**



Grey/Charcoal, **GRYCRL**



Black/Teal, **BLKTEL**

## VIO-NRG THRILL



**Style THRILL | MSRP \$139.95**  
**Start Ship January 2018**

Women's Whole & Half Sizes  
 Medium: 5, 6-10, 11

Lending caché to the Elation silhouette, Thrill's perforated leather or cow suede upper brings added wearability to this active casual.

Upper: Leather or Suede  
 Footbed/Outsole: Co-Molded Proprietary EVA with Memory Foam Compound with Rubber Outsole

Patent Pending



Light Pink, **LTPNK**



White, **WHT**



Light Tan, **LTTAN**



Grey, **GRY**



Black, **BLK**

## VIONIC WALKER



**Style 23WALK | MSRP \$99.95**  
**Start Ship Immediate**

Women's Whole & Half Sizes  
 Medium: 5, 6-10, 11 Wide: 5, 6-11

The classic all-purpose Walker is an iconic shoe for the comfort seeker from any walk of life.

Upper: Leather  
 Footbed: Removable EVA  
 Outsole: Durable Rubber



Taupe, **TPE**



White/Pink, **PNK**



White/Blue, **WHTBLU**



Black, **BLK**

# VIONIC®

## INDULGE GRACIE



**Style GRACIE | MSRP \$59.95**

**Start Ship January 2018**

Women's Whole Sizes

Medium: 5-12

For the lady who loves a toe-post, Indulge Gracie's luxurious terry upper and footbed make an afternoon at home feel like a day at the spa.

Upper: Textile

Footbed: Textile Covered EVA

Outsole: TPR with Textile



Pink, **PNK**



Light Grey, **LTGRY**



Blue, **BLU**



Black, **BLK**

## INDULGE RELAX



**Style 26RELAX | MSRP \$59.95**

**Start Ship Immediate**

Women's Whole Sizes

Medium: 5-12

Keep your toes free and your soles supported with the classic, adjustable Indulge Relax slipper. Designed in padded terry and faux fur for serious cuddliness.

Upper: Textile

Footbed: Textile Covered EVA

Outsole: TPR with Textile



Pink, **PNK**



Tan, **TAN**



Tan Leopard, **TANLPRD**



Grey Zebra, **DKGZEB**



Black, **BLK**

## INDULGE GEMMA



**Style 26GEMMA | MSRP \$59.95**

**Start Ship Immediate**

Women's Whole Sizes

Medium: 5-12

This all-time winner is a plush mule-style spa slipper. Features an adjustable hook-and-loop closure across the vamp for adjustability.

Upper: Textile

Footbed: Textile Covered EVA

Outsole: TPR with Textile



Tan, **TAN**



Pink, **PNK**



Tan Leopard, **TANLPRD**



Grey Zebra, **DKGZEB**



Black, **BLK**



## SUBLIME MARLEY

**Style 361MARLEY | MSRP \$99.95**  
**Start Ship November 2017**

Women's Whole & Half Sizes  
 Medium: 5-11

Slip into pure luxury with the Sublime Marley, a cow suede slipper lined with plush technical wool. A rubber outsole lends versatility to this simple silhouette.

Upper: Suede with Textile  
 Footbed: Technical Wool Covered EVA  
 Outsole: Durable Rubber



Chestnut, **CHSTN**



Black, **BLK**

## COZY IDA

**Style 366IDA | MSRP \$69.95**  
**Start Ship Immediate**

Women's Whole & Half Sizes  
 Medium: 5, 6-10, 11

A simple, low-profile take on the classic house slipper, Cozy Ida's suede uppers keep feet warm and supported.

Upper: Suede  
 Footbed: Textile Covered EVA  
 Outsole: TPR

US Patent D615742



Chestnut, **CHSTN**



Black, **BLK**

---

## orthaheel®

PODIATRIST  
— DESIGNED —

### RELIEF

**Full-Length | Style 21RF | MSRP \$34.95**

Unisex XS-XL

**3/4-Length | Style 21RR | MSRP \$34.95**

Unisex XS-XL

- Provides everyday comfort and support
- Our full-length orthotic replaces your shoe's removable footbed
- Ideal for casual, flat shoes and walking shoes
- 3/4-length is best in shoes with low profile toe boxes
- 3/4-length works for both narrow and wide widths



### ACTIVE

**Style 21AF | MSRP \$39.95**

Unisex XS-XXL

- Built for athletic support
- Reinforced rear-foot heel shell controls the foot under high impact
- Ideal for active and casual shoes



### SHOCK ABSORBER

**Style 21OSA | MSRP \$34.95**

Unisex XS-XL

- Provides maximum cushioning
- Our full-length orthotic replaces your shoe's removable footbed



### DRESS SLIMFIT

**Style 21ESF | MSRP \$34.95**

Woman's XS-L

- Fits women's casual flats as well as heeled styles
- Supports and cushions the ball of the foot
- Low-profile silhouette allows the orthotic to fit easily into most shoes



### GEL HEEL DEVICE

**Style 21GHD | MSRP \$24.95**

Unisex S, M & L

- Fits most narrow shoe styles
- Provides targeted heel support
- Best for flat, casual shoes



## 2017 START SHIP DATES

### OCTOBER

Splendid Midi

### NOVEMBER

Joy Serena

Joy Daytona

Rest Bella II

Rest Pippa

Rest Dorie

Rest Samoa

Rest Farra

Rest Amber

Pacific High Tide

Tide II

Pacific Naples

Pacific Rio

Honor Ashby

Gem Posey

Spark Minna

Mod Daphne

Kit Josie

Lux Camden

Splendid Midi Perf

Fresh Riley

Brisk Dash

Brisk Miles

Agile Kea

Flex Sierra

Flex Satima

Sublime Marley

### DECEMBER

Rest Kirra

Aruba Maris

Tide Sport

Tide Rhinestones

Wise Reagan

Wise Hadley

Snug Adeline

Spark Surin

Delight April

Delight Edie

Fresh Joey

## 2018 START SHIP DATES

### JANUARY

Coast Santorini

Coast Sandy

Perk Carmel

Perk Anibel

Pep Lorne

Pep Solana

Palm Catalina

Palm Veranda

Palm Gala

Palm Boca

Rest Miami

Rest Paulie

Rest Ophelia

Bay Alani

Gem Hartley

Splendid Lou

Splendid Midi, WHTFLRL

Splendid Syra

Splendid Bobbi

Sunny Rae

Sunny Hattie

Brisk Pace

Vio-NRG Elation 1.0

Vio-NRG Thrill

Indulge Gracie

### FEBRUARY

Tulum Kadya

Tulum Vero

Tulum Ainsleigh

Rest Bella II, NEW COLORS

Pacific Mimi

Pacific Marbella

Tide Jewel

### MARCH

Port Cali

Port Frances

---

VIONIC®

## ADVERTISED STYLES

advertising builds awareness and  
drives consumers to stores

---

DECEMBER

2017



SPLENDID MIDI PERF, PG 25

---

MARCH

2018



SUNNY HATTIE, PG 27  
TULUM VERO, PG 5

---

APRIL

2018



PALM VERANDA, PG 11  
SUNNY HATTIE, PG 27

---

MAY

2018



REST PIPPA, PG 13  
PACIFIC HIGH TIDE, PG 16

★ See product listing for tentative advertised colors for each style.

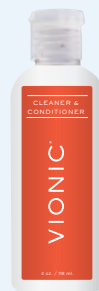
## VIONIC SHOE CARE

Caring for your shoes is important in helping them to last longer and maintain their appearance. Vionic Shoe Care products provide all the necessities for keeping your leather and suede shoes looking like new, and microfiber footbeds feeling fresh.

---

*Vionic Shoe Care is eco-friendly  
and made in the USA.*

---



### VIONIC LEATHER CLEANER & CONDITIONER

**Style 9CARECLEAN**

**MSRP \$9.95 | 6oz**

**Start Ship Immediate**

Specially formulated to maintain leather and suede uppers, Vionic Leather Cleaner & Conditioner removes dirt and stains while conditioning with natural oils.



## MARKETING TOOLS

to help you drive sales



### PUBLIC RELATIONS

Building relationships with media across multiple platforms to extend the brand's appeal.



### TRAINING & TOOLS

Supporting retailers through associate training and access to our online resource center with high-resolution footwear and lifestyle photography and more!



### ON-FLOOR PRESENTATION

Fresh and contemporary fixtures and seasonal collateral help showcase Vionic to your customers.

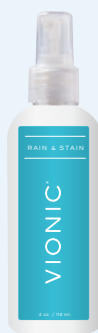
[VionicTraining.com](http://VionicTraining.com) | [Media.VionicGroup.com](http://Media.VionicGroup.com)



### VIONIC FOOTBED CLEANER

**Style 9CAREFOOTBD**  
**MSRP \$9.95 | 6oz**  
**Start Ship Immediate**

Keep your microfiber footbeds and orthotic inserts fresh with the Vionic Footbed Cleaner, which helps remove stains that occur with regular wear.



### VIONIC RAIN & STAIN

**Style 9CAREPRTCT**  
**MSRP \$9.95 | 6oz**  
**Start Ship Immediate**

Providing a breathable barrier against water, dirt and stains, Vionic Rain & Stain protects against the elements.

### VIONIC SHOE CARE KIT

**Style 9CAREKIT**  
**MSRP \$22.95**  
**Start Ship Immediate**

Kit includes:

- 2oz. bottle of Cleaner & Conditioner
- 2oz. bottle of Rain & Stain
- 2oz. bottle of Refresher
- 1 brush

## VIONIC SALES TEAM

### Rob Seehusen

Vice President, Sales  
P. 858 405 0351  
E. rseehusen@vionicgroup.com

### Deborah Delisle

Sales Director, East Coast  
P. 603 770 8995  
E. ddelisle@vionicgroup.com

### Jill Penn

Sales Director, West Coast  
P. 720 841 8257  
E. jpenn@vionicgroup.com

## SPECIALTY RETAIL SALES AGENTS

### NJ, NY, PA

Frank Cardullo  
P. 908 955 7725  
F. 908 955 7685  
E. fcardullo@aol.com

### Nor CA

Al Correia  
P. 925 457 0281  
F. 800 552 1401  
E. agcorreia4@gmail.com

### OR, WA, AK, ID, MT

Brion Denton  
P. 425 999 6374  
E. brioncdenton@outlook.com

### TX, OK, AR, LA

Joey DeWitt  
P. 817 975 3365  
F. 817 549 2626  
E. jd@jdrtradinggroup.com

### So IL, OH, IN, MI

Rick Driver  
P. 269 274 9972  
F. 269 704 6118  
E. rdriver181@gmail.com

### DC, DE, MD, VA, WV

Andrew Hughes  
P. 908 884 7400  
F. 866 853 3677  
E. ahughes402@gmail.com

### CT, MA, ME, NH, RI, VT

Cassie Lawrence  
P. 203 273 1301  
E. cassielawrence@gmail.com

### FL, Puerto Rico, Bermuda

Cory Lunderville  
P. 904 610 8186  
F. 904 292 9865  
E. cdlunderville@gmail.com

### KS, NE, IA, MO

Sharon Mack  
P. 608 963 4623  
E. sharonvionic@gmail.com

### GA, AL, MS

Scott Nelson  
P. 205 568 4772  
E. 42Scottnelson@gmail.com

### Nor IL, WI, MN, ND, SD

Carey Peacock  
P. 574 339 5229  
E. careyspeacock@gmail.com

### KY, NC, SC, TN

Shannon Pesnell  
P. 251 654 2460  
E. shannonpesnell@gmail.com

### So CA, AZ, So NV, HI

Melissa Solano  
P. 407 520 1516  
F. 888 552 1401  
E. msmsolano@icloud.com

### CO, WY, NM, UT

Kristen Turner  
P. 720 470 0302  
F. 720 385 0848  
E. kt@turnertradinggroup.com

## FIELD SERVICE REPRESENTATIVES

### Southwest

Alexis Armye  
P. 480 435 4213  
E. aarmey@vionicgroup.com

### Mid Atlantic

Katie Bauman  
P. 864 518 7242  
E. kbauman@vionicgroup.com

### South

Alma E. Castro  
P. 214 240 8318  
E. acaastro@vionicgroup.com

### Northeast

Ashley Grothaus  
P. 484 631 5453  
E. agrothaus@vionicgroup.com

### Southeast

Angela McCullagh  
P. 813 767 6768  
E. amccullagh@vionicgroup.com

### Midwest

Jacob Newhouse  
P. 608 469 1161  
E. jnewhouse@vionicgroup.com

## MEDICAL TEAM

### Mark Sanders

General Manager  
P. 415 755 2709  
C. 949 933 3256  
E. msanders@vionicgroup.com

### Brandon Noble (CO)

Director of Sales, National Accounts  
P. 865 748 8562  
F. 415 526 6960  
E. bnoble@vionicgroup.com

### Joe Carl

Key National Accounts Manager  
P. 724 422 5877  
E. jcarl@vionicgroup.com

## MEDICAL SALES AGENTS

### FL, AL, Puerto Rico

John Benitez  
P. 305 742 8911  
E. jbenitez28@bellsouth.net

### CO, NM, MT, WY, UT

Chris Donahue  
P. 303 895 6000  
E. chris.donahue6@gmail.com

### No CA, No NV, WA, OR, AK, ID, HI

Donnie Flahavan  
P. 503 306 9446  
E. dflahavan@vionicgroup.com

### PA, MD, DE, DC, No VA, So NJ, Upstate NY

Josie Genovese  
P. 215 550 9474  
E. josie.vionic@gmail.com

### So CA, AZ, So NV

John Giraldo  
P. 951 479 7866  
E. john.giraldo.jg@gmail.com

### ME, NH, CT, VT, MA, No NJ, NYC Area

Jillian Issadore  
P. 781 375 8899  
E. jillian.issadore@thepedsrgroup.com

### TX, OK, LA, AR, W TN

Alan Johnson  
P. 940 453 4943  
E. giraffx@gmail.com

### IL, WI, MN, ND, SD, NE, MO, IA, KS

Sharon Mack  
P. 603 963 4623  
E. sharonvionic@gmail.com

### GA, NC, SC, So VA, E TN

Sandy Smith  
P. 815 608 6124  
E. ssmith@medrepsusa.com

### OH, IN, MI, KY, WV

Chad Young  
P. 513 646 0417  
E. vionic.chad@gmail.com

## OCCUPATIONAL HEALTH SALES AGENT

### ME, VT, CT, NH, MA, Albany NY

Angie Elliot  
P. 603 498 5874  
E. angeelliott@yahoo.com

### FL, PR, Central America

Steve Lewis  
P. 954 629 9632  
E. cilew@me.com

### PA, DE, MD, NJ, DC, NY, OH

Paul LoPolito  
P. 484 467 6385  
E. plopiloto@comcast.net

### CA, AZ, NV, HI

Rondi Bolliger  
P. 310 962 5160  
E. ronaib67@ca.rr.com

## VIONIC GROUP LLC

4040 Civic Center Dr., Suite 430, San Rafael, CA 94903 USA  
Office: 1 888 882 7954

©2017 Vionic Group LLC

VIONICSHOES.COM