

# TIPS & NOTES

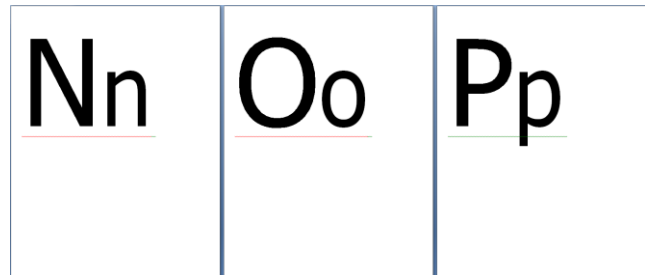
## on the

# Alphabet Pages

♦ **TO PRINT:** Printers work differently, so here are a couple of options... 1) In the document, highlight all of the alphabet pages in the font you want to print, choose "Selection" in the print options box, and then "print." Otherwise you will [**OH DEAR!**] print out all three sets; as in all 82 pages! ... Or 2) In the print command box, figure out the specific numbers of the pages you want to print. For example, if you want to print the first Tahoma set, choose pages 3-28, and you'll get just that *one* set of letters. Times New Roman is pages 30-55, and Ariel Rounded is pages 57-82.

♦ **WHAT TO PRINT ON:** Print onto either plain paper or matt (non-shiny) cardstock. Paper works, but matt cardstock is sturdier. If you print on paper, I'd suggest that, when putting the book together, you put two letter pages back-to-back with a third *plain* sheet of paper between the two pages for sturdiness. OR put one of the letter pages plus one or two sheets of plain paper behind it into the plastic sheet protector.

♦ **SEEING RED or GREEN ZIG-ZAGGY LINES?** Disregard any zig-zaggy lines that may appear under the letter pairs. This just means that the editing program doesn't recognize the pair (of the upper case and lower case letters) as a proper word. But we don't care; we're printing it anyway, *without* turning it into a word, cuz we just want the pair of letters. ☺  
(No worries; these won't show up when printed out.)



♦ **FONT SIZE DIFFERENCE:** You may also notice that the font size number of the capital letter differs from that of the lower case letter. (Like the first "A" is Tahoma 350 and the little "a" is Tahoma 270.) This is because they made the lower case letters about 2/3 the height of the upper case, and they should only be *half* as high. So I made the lower case letters smaller than how the program has them.

♦ **EDITING A FEW OF THE LETTERS:** Each font has its own way of forming the letters, and I don't approve of all of them. ☺ I'm not an official letter authority, but I do have preferences that make sense! ☺ So if you want to add the right side of the line across the top of the capital J, or a little curvy line going to the right from the bottom of the q, or the short lines on the top and bottom of the capital I or the whole line across the top of the **J**, feel free to do so! (with a ruler!) (The J is normal in Times New Roman: **J**, but has NO top line in Ariel Rounded: **J**. So just edit whatever you want. You have my permission! ☺ These were the best fonts I could find.

The  
Alphabet  
in  
Tahoma

**Aa**

**Bb**

Cc

**Dd**

**Ee**

**Ff**



Gg

**Hh**

**I**

**i**

ز

ز

**Kk**

**L**

**U**

**Mm**

**Nn**



O o

Pp

Qq

**Rr**

**Ss**

**Tt**

U u

**W w**



**W w**

**X x**

**Y**

**y**

Zz

The  
Alphabet  
in  
Times New  
Roman

(See first page for tips and notes.)

Aa

**Bb**

Cc



Dd

Ee

Ff

Gg

**Hh**

**Ii**

J j

**Kk**



Li

**Mm**

**Nn**

Oo

Pp

Qq

Rr

Ss



**Tt**

Uu

**W w**

W

w

**X x**

**Y**

**y**

**Zz**

The  
Alphabet  
in  
Ariel  
Rounded

(See first page for tips and notes.)



**Aa**

**Bb**

**Cc**

**Dd**

**Ee**

**Ff**

Gg

**Hh**



l

i

Jj

**Kk**

**L**

**l**

**Mm**

**Nn**

Oo

**Pp**



Qq

**Rr**

**Ss**

**T**

**t**

U u

**v**

**v**

**W w**

X x



Y

y

**Zz**