

Northern Michigan

Serving Northern Michigan and the Upper Peninsula

WINTER, 2018

Petoskey Downtown Greenway, South Segment Project Wins Multiple Awards

When you already love the work you do, receiving special recognition for a project is especially meaningful. We are delighted to announce that the Petoskey Downtown Greenway South Segment has been selected by the Michigan Recreation & Park Association (mParks) to receive a **2018 Park Design Award**.



A view of the Petoskey Downtown Greenway, South Segment, Petoskey, Michigan.

The project was also awarded the **Architectural Award, Beautification Category**, by the Petoskey Regional Chamber of Commerce.

This South Segment of the Petoskey Downtown Greenway is a 1,560' long, nonmotorized accessible paved trail that links downtown Petoskey's Pennsylvania Park to the historic Emmet Old Town neighborhood. The trail also represents the second phase in the city's efforts to complete a 1.1 mile, regional nonmotorized accessible trail that utilizes a historic rail corridor. This segment of trail repurposes four blocks of railway corridor beginning at the center of the downtown district.

The trail serves to promote accessible nonmotorized circulation for users of all abilities from outlying areas of Petoskey to the city's downtown district, providing an efficient path of travel to and from downtown, while providing a parklike setting that gives users an appealing alternative to traditional streetside sidewalk travel. The trail also helps to fulfill an important regional role in the City's Parks and Recreation Master Plan by linking some of the facilities using the trail.

CORPORATE OFFICE

Ann Arbor, Michigan
535 W. William St., Suite 101
Ann Arbor 48103
www.bria2.com
ldumouchel@bria2.com



NORTHERN MICHIGAN LOCATIONS

Petoskey Office
113 Howard St.
Petoskey 49770
231.347.2523
jri@bria2.com

Traverse City Office
921 W 11th St. Ste 2E
Traverse City 49684
231.649.1065
ckarner@bria2.com

FOLLOW US:
  
[@beckettraeder](https://www.instagram.com/beckettraeder)

BRI Wins Three Prestigious State Planning Awards

We are thrilled to announce that we received three Planning Excellence Awards from the Michigan Association of Planning (MAP/APA Michigan) this year. The awards ceremony took place in September at MAP's annual conference, Planning Michigan, in Grand Rapids.

The three projects were so successful thanks to the hard work and dedication of many of our partners and communities from all across the state. Learn more about each project below.

Planning for Community Resilience in Michigan: A Comprehensive Handbook, Best Practice Award

As one of the authors of the handbook, Claire Karner, BRI Associate says, "We attempted to provide a comprehensive guide for anyone interested in embarking on an inclusive and transparent resiliency planning process in their community—the handbook is complete with data, resources, tools, case studies, and inspiration from Michigan resiliency leaders."

Jackson Downtown Streetscape, Urban Design Award

The City of Jackson, Michigan was looking for a streetscape that would incorporate placemaking principles to activate the downtown and entice people to partake in its burgeoning renaissance. The plan called for pedestrian-friendly features that would demote the car on the vehicular hierarchy so that passers-by could stroll leisurely without fear of a collision. The plan called for "greening" the streetscape by increasing foliage in the newly created planter spaces and expanded tree canopy coverage to protect visitors from the elements.

Project Rising Tide, Economic Planning and Development Award

Leah DuMouchel, BRI Senior Associate and Project Manager for Project Rising Tide sums it up like this, "The best thing about this project is that it has been fully community-driven. Each one took the time to really develop their own goals

and to pull together a team of invested movers and shakers who were interested in making things happen, and this investment was the magic ingredient every time." Project Rising Tide is a governor-initiated program designed to spread Michigan's economic comeback beyond the State's largest and oldest urban cores, providing tools and resources to a different type of community: less populous and often less urbanized, with an operational relationship to its rural surroundings, and characterized by indicators of economic distress such as poverty, unemployment, and high rental occupancy and vacancy.

The Michigan Association of Planning, the state chapter of the American Planning Association, is a nonprofit organization dedicated to promoting sound community land use planning that benefits the residents of Michigan. Learn more at www.planningmi.org.



Planning for Community Resilience in Michigan: A Comprehensive Handbook



Jackson Downtown Streetscape, Vision Illustration



Project Rising Tide, Newberry Graduation ceremony with Michigan Governor Rick Snyder and John Dewitt, Village President

We are MEDC Redevelopment Ready Community (RRC) Technical Assistance Consultants

We're happy to talk with you about RRC technical assistance funding and guide you through any questions you might have.

Contact **Claire Karner** in our Traverse City office at: 231.649.1065 or ckarner@bria2.com.

Planner Carrie Klingelsmith Joins Our Petoskey Office

Carrie brings a diverse background in both the public and private sector. As a Certified Park and Recreation Professional, she is dedicated and passionate about recreation services, programming, and their land uses.

Carrie has worked in the public sector for a variety of municipalities, giving her unique insight into the daily operations of local governments, acting as a recreation programmer and park and recreation director. She matches this expertise with private sector experience that spans grant writing, marketing, development, and building partnerships and collaborative efforts. Carrie has successfully raised nearly \$1,000,000 dollars in grant funding for her clients over the years and strives to secure funding for important recreational projects.



It's Time for Moving Forward in Negaunee

Negaunee City Council has taken important steps forward by unanimously approving the city's first-ever economic development plan.

The plan was developed in collaboration between Beckett & Raeder, Inc. and the newly formed Negaunee Economic Development Advisory Team with a focus on building strategies for creating economic vitality, including the implementation of a downtown plan and streetscape project. The plan also aims to preserve Negaunee's unique history, enhance its character, and spawn new economic development opportunities. Reactivation of the city's downtown development authority and the establishment of a tax-increment finance district could be key in this process, also called for in the plan.



The public was invited to learn more at an event in early December and the full plan can be viewed on the Negaunee website: www.cityofnegaunee.com.

Protecting Our Future

Our months-long collaboration with many partners across the state, **A Changing Climate: Managing Water for Health** came to a close with a final report and recommendations.

The goal of this project was to further implement the Michigan Climate & Health Adaptation Program (MICHAP) Strategic Plan. With funding from the Centers for Disease Control and Prevention (CDC), MDHHS has been working to build a climate-resilient public health system for Michigan at the state, local health department, and community levels since 2010. Their 2016-2021 Strategic Plan sets the following overarching outcome goals that guide community outreach and health interventions:

- Climate change is recognized as a public health issue and is integrated into public health practice.
- Public health agencies and stakeholder organizations have the tools, resources, and activities to respond to climate change impacts within existing programs.
- Vulnerable populations are explicitly considered in programs and policies addressing climate change impacts.



*A Changing Climate: Managing Water for Health,
Final Report*

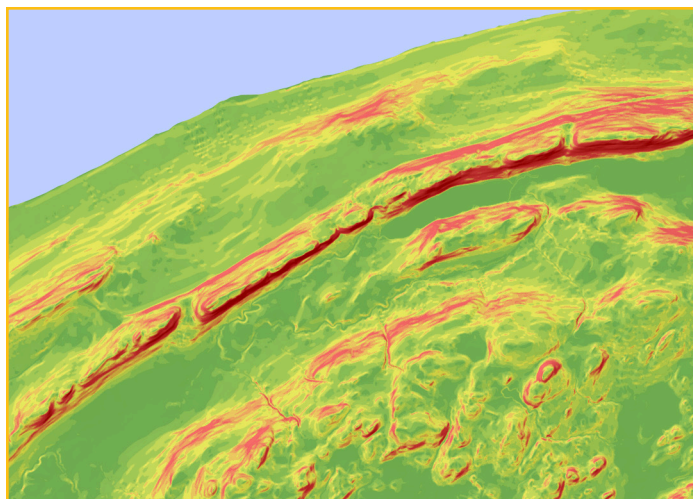
Find Out What GIS Can Do For You

Beckett & Raeder, Inc. has employed GIS technology in virtually all planning, landscape architecture, and engineering projects for many years, following the ever-changing nature of this emerging field. This fundamental technology aids in decision-making, provides guidance for research and design, and allows us to uncover information otherwise unknown without spatial reference.

GIS is useful in a multitude of project types. Whether the setting is natural or urban, environmental or structural, or based upon inventory or analysis, understanding the potential options and proper tools to emphasize spatial information is key to proper planning. For additional information on what GIS can do for your community, industry, or project, we are always here to answer questions and teach you about this powerful technology.

Our GIS Specialist, **Marisa Laderach**, GISP, is a certified professional and always developing new and creative ways to use this technology.

Learn more about how we have used GIS in our projects at our website, <http://www.bria2.com/projects-gis> or call us to find out what GIS can do for you, 734.663.2622.



*Slope map detail, Porcupine Mountains
State Park, Michigan*