

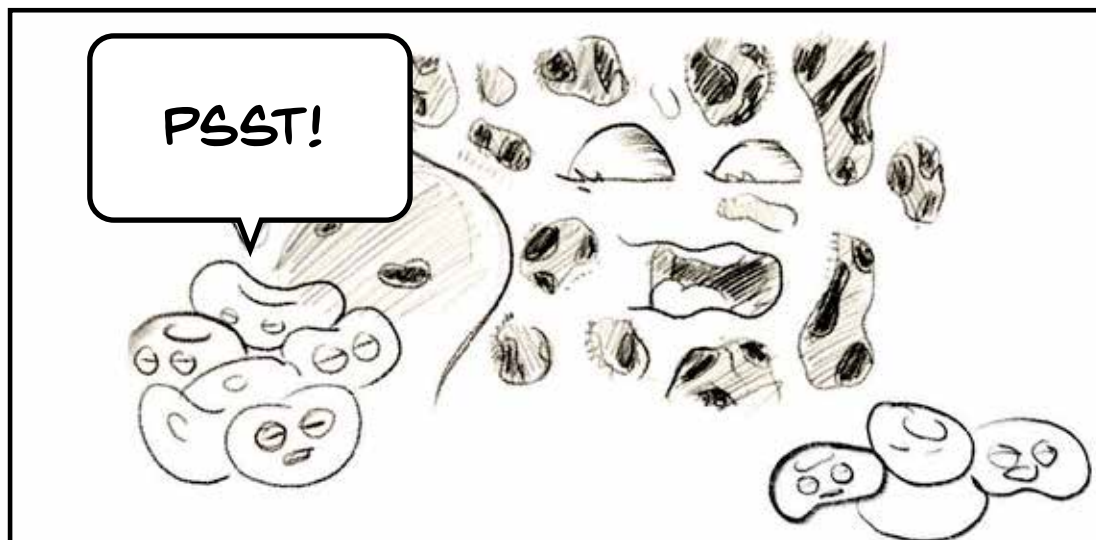
# BLASTULA WEEK 1



ONE NIGHT, DEEP WITHIN THE MARROW OF A BONE



ZZZZZ....



PSST!



PSST!  
MOM...

MOTHER  
MARROW...

WHA... HUH...  
UGH! LITTLE RED,  
WHAT IS IT?

MOM,  
CAN I TRY AGAIN  
TOMORROW?

SERIOUSLY,  
I CAN'T GO  
THROUGH THIS  
AGAIN...

RED, I THINK YOU ARE THE FIRST  
RED BLOOD CELL IN HUMAN'S  
HISTORY TO COMPLETELY MESS  
UP ON THE FIRST DAY IN THE  
'STREAM'. WHAT'S THE NUMBER  
ONE RULE WE HAVE, LITERALLY,  
THE ONLY RULE WE HAVE...



I KNOW MA,  
WE PICK UP THE OXYGEN, THEN  
WE DROP OFF THE OXYGEN.  
AND THEN WE DO IT AGAIN AND  
AGAIN AND AGAIN AND...



AND AGAIN AND AGAIN FOREVER...  
UNTIL THE DAY YOU EXPLODE AND  
THE MACROPHAGES COME TAKE  
YOU AWAY...

AND WHAT DID YOU DO INSTEAD?



I STOPPED AND ASKED  
FOR DIRECTIONS...  
IT WAS AWESOME





NO RED, IT WAS MORTIFYING.

HUMAN'S BODY DEPENDS ON BALANCE,  
EVERYONE DOING THEIR JOB ALL AT ONCE.

IF JUST ONE CELL, JUST ONE CELL,  
DECIDES TO STRAY FROM THEIR TASK, THE  
WHOLE SYSTEM GOES INTO CHAOS TRYING  
TO FIGURE OUT WHAT WENT WRONG.

AND YESTERDAY, THE SYSTEM FOUND YOU.

DO YOU KNOW HOW THAT MAKES ME LOOK  
WHEN THE CELLS I PRODUCE ARE... FAULTY!

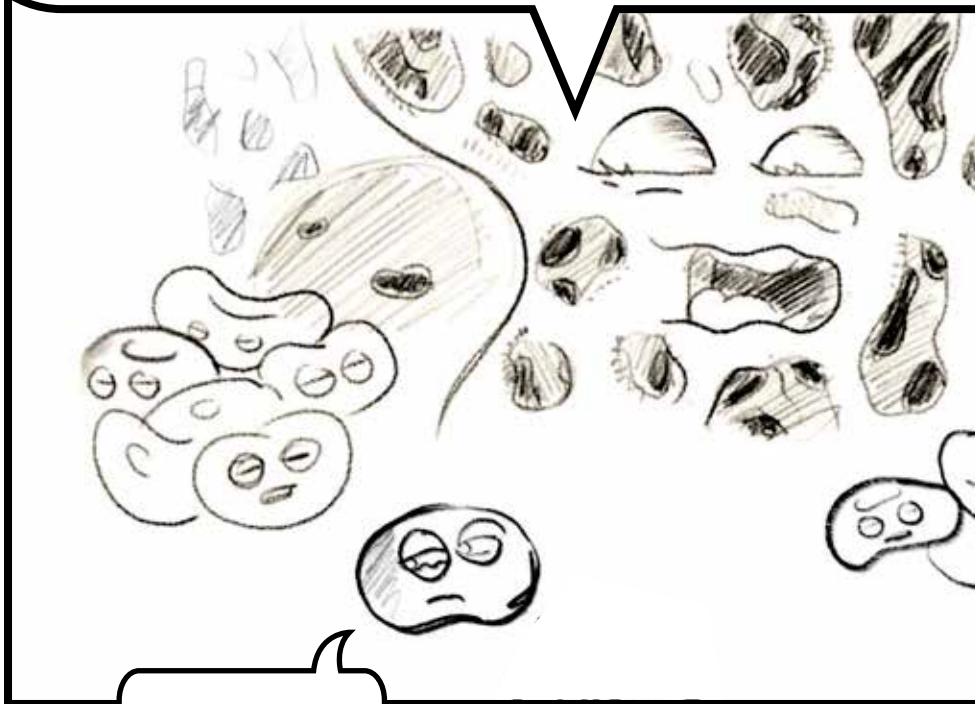
YOUR TASK IS TO LET THE STREAM TAKE  
YOU WHERE YOU ARE MEANT TO GO.  
NO QUESTIONS ASKED. EVER.



OH...

I KNOW YOU HAVE THIS, THIS FANTASY  
OF BEING THE MOST EFFICIENT RED BLOOD CELL THIS  
BODY HAS EVER SEEN BUT FRANKLY, YOU ARE MORE  
OF A LIABILITY THEN A HERO.

NOW LET ME GET BACK TO SLEEP, RED. I NEED TO  
SAVE MY ENERGY FOR YOUR COMPETENT SIBLINGS...

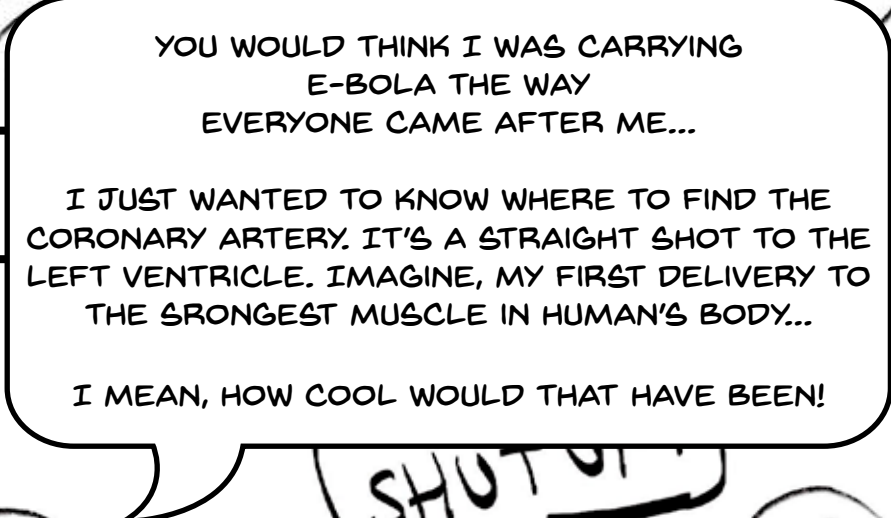


OKAY...



ONE MISTAKE AND  
I'M A FAILURE.

A comic panel showing a character with a speech bubble. The character is a simple, rounded figure with a single eye and a small mouth. The background is filled with various shapes, including circles and ovals, some of which have faces or internal patterns. The overall style is hand-drawn and sketchy.



YOU WOULD THINK I WAS CARRYING  
E-BOLA THE WAY  
EVERYONE CAME AFTER ME...

A comic panel showing a character with a speech bubble. The character is a simple, rounded figure with a single eye and a small mouth. The background is filled with various shapes, including circles and ovals, some of which have faces or internal patterns. The overall style is hand-drawn and sketchy.

I JUST WANTED TO KNOW WHERE TO FIND THE  
CORONARY ARTERY. IT'S A STRAIGHT SHOT TO THE  
LEFT VENTRICLE. IMAGINE, MY FIRST DELIVERY TO  
THE SRONGEST MUSCLE IN HUMAN'S BODY...

I MEAN, HOW COOL WOULD THAT HAVE BEEN!

SHUT UP



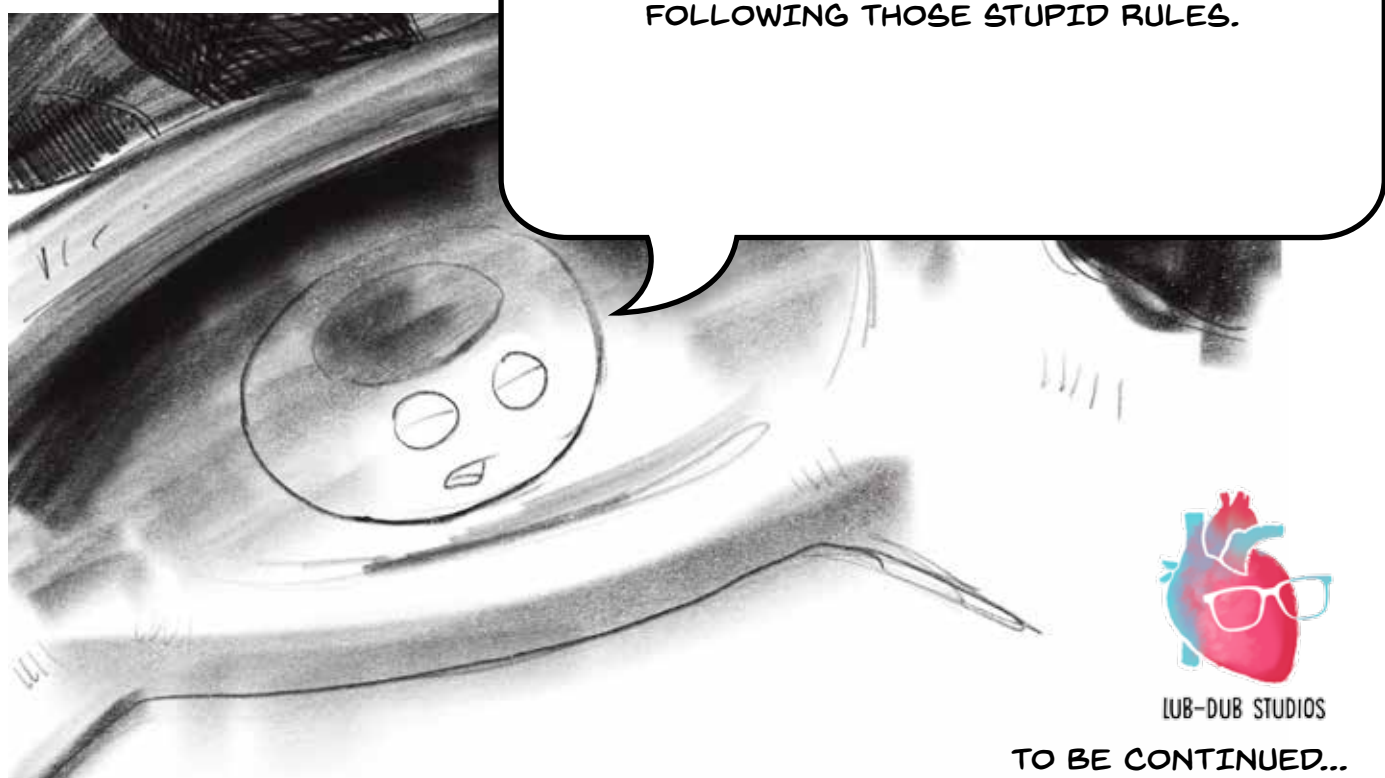
I'M NOT WAITING AROUND  
FOR MOTHER MARROWS  
PERMISSION...

A comic panel showing a character with a speech bubble. The character is a simple, rounded figure with a single eye and a small mouth. The background is filled with various shapes, including circles and ovals, some of which have faces or internal patterns. The overall style is hand-drawn and sketchy.



I'M COMING FOR YOU LEFT VENTRICLE.

FIRST THING IN THE MORNING.



AND THEN MAYBE I'LL CONSIDER  
FOLLOWING THOSE STUPID RULES.



LUB-DUB STUDIOS

TO BE CONTINUED...