

# Da Vinci Billiard Assembly Instructions:

Provided by American Heritage Billiards



**\*\*Please read entire Assembly guide prior to building the Da Vinci pool table.**

**Prior to Assembly, Check that there is 1 x assembled base, 1 x Rail Box, 1 x Side/End Blinds Box, 1 x Accessory kit, and 1 set of framed slate inside the cabinet**



**Step 1:** The base of the table should be received inside your crate as shown above, no further assembly is required to the base. There is no hardware required for this step.

**Step 2A:** With a tape measure, measure the cross beam assembly diagonally from opposing corners to make sure cross beam assembly is square.

**Step 2B:** Make sure that the long beams are flush with the top of the leg box.

**Step 3:** Making sure table assembly is in the proper spot in the room, use a level to ensure the frame is level to the floor. Use flat shims under the legs to adjust if needed.

**Step 4A:** Locate the center piece of framed slate and position it on the cross beam assembly so that it is centered to both the length and width of the assembly (you must be very accurate with placement). Pre-drill hole through slate screw hole using a 3/16" drill bit. Vacuum out debris and secure using slate screws pictured below (figure 1.A). Continue with same process with both outside sections of slate.

**Step 4B:** With a level or straight edge, be sure that the slate seams are flat and level. If adjustments need to be made, loosen slate screws and place a shim(s) in area that needs adjustment. Tighten screws and check for levelness. Use Bee's Wax or similar to fuse the seams of the slate together.



1.a

**Step 5:** Remove any wax, dust and debris from the slate surface to prep it for the bedcloth. Layout bedcloth centering it over the slate surface. Starting at one end, staple cloth to slate framing working from center out toward the pockets stretch cloth toward pockets. Go to opposite end of table and repeat process but pull the cloth tight while stapling. Repeat on long sides working from center between center pocket and end pocket stretching cloth toward the pockets as you staple. Once cloth is completely stapled, cut pocket openings by cutting small vertical incisions in cloth to relax the fabric so it can be stretched and stapled around opening. Finally, make “X” style slits in cloth where rail bolts will go through the slate holes (see photo).

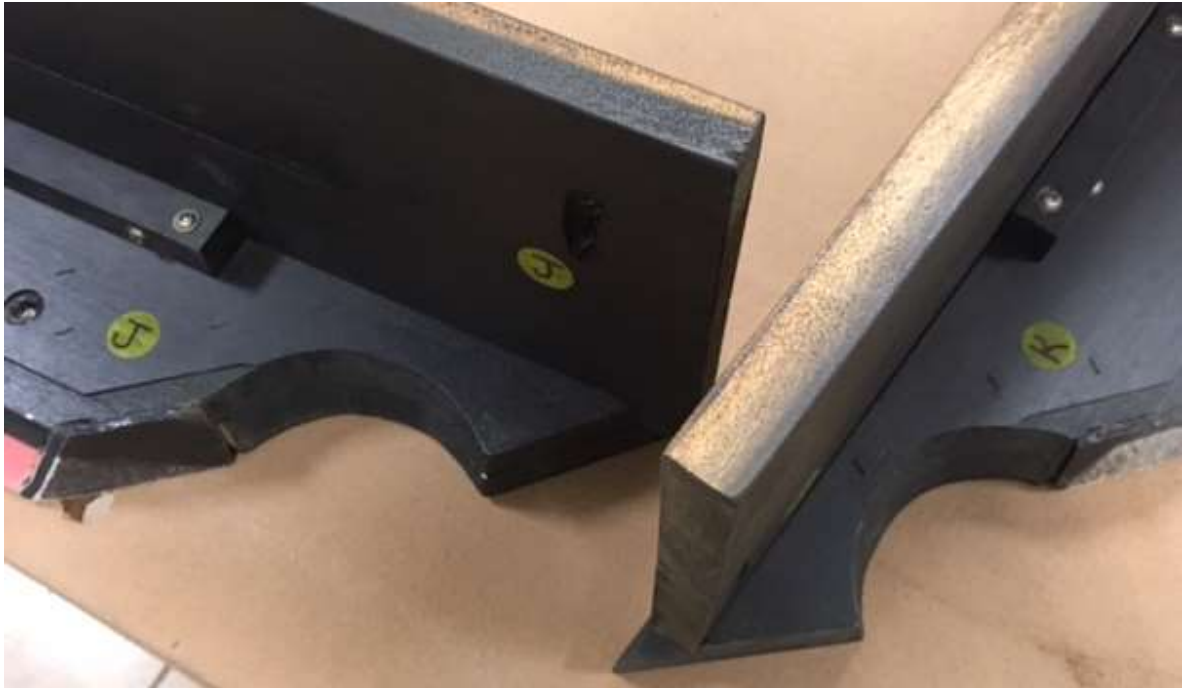
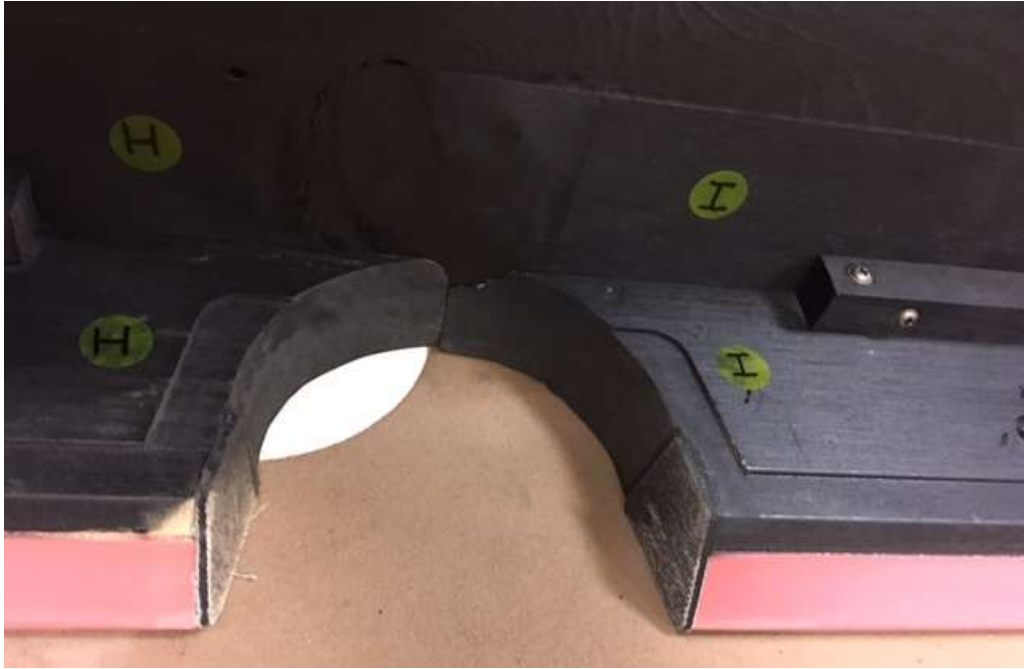


**Step 6:** Slate bed will ultimately look like this when covered with cloth

**Step 7:** Prep the rails and blinds on the top of the table making sure to follow the marked stickers from ‘A’ to ‘L’ all the way around the table. Each Da Vinci pool table has been hand picked and tested to make sure the final product assembles correctly. Please see images on the following pages of the rails and blinds laid out and lettered.









**Step 8:** Make sure rail blind is centered on the rails and flush at each end. Make sure the center pocket opening seam is tight. Secure long side blind to cleats using screws. **Be absolutely sure to use only the enclosed blind screws when securing the blinds to each rail; incorrect screw length will cause permanent damage to all blinds.**

**Step 9:** Follow this same process for the end rails and blinds.

**Step 10:** For both long side rail/blind assemblies, thread the threaded rods into all rail inserts being sure to hand tighten before proceeding to the next step



Rail Inserts



Threaded  
Rod

**Step 11:** Take the two long rail/blind assemblies and position by lining up the rail bolt holes in the slate and the corresponding threaded rods of the rail. Loosely hand tighten the rails using the domed washer and nut. (Dome of washer faces down)

**Step 12:** Slide the end rail/blind assembly onto the table making sure both corners align with the side rail/blind assemblies. Repeat this step for both ends of the table.

**Step 13:** Once all four corners are flush, attach the provided cleats to both the end blind and side blind as shown below to ensure that all four corners stay flush during the following steps.





**Step 14:** You may now hand tighten the end rails to the table as described in Step 11.

**Step 15:** Once all rails/blinds are straight and flush, tighten all rail nuts with deep well socket.



**Side Pocket (2)**



**Corner Pocket (4)**

**Step 13:** **NOTE: the side pockets and corner pockets ARE different and will only work correctly one way.** To install the pockets, squeeze the top of the pocket and bring it up through the pocket opening from the bottom. Be sure not to push back the pockets so they are flush against the rail; the first priority is to ensure they line up with the felt near the playing surface. Peel back the paper to reveal the sticky side of the velcro on the backside of the Pocket to secure the Pocket to the Rail.

**Please note the Da Vinci pockets are black, the below image is for size reference only!**

