

FLEXITANK UNLOADING PROCEDURE

1. Positioning the container

- Position the container, so that there is a gentle slope from the front to the rear.
- By doing this, at the end of discharge the product will flow to the rear of the flexitank, make draining easier.



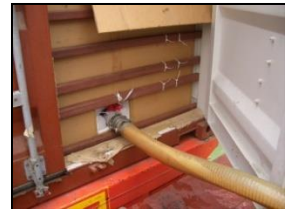
2. Opening the container door and Hose Connection

- CHECK that the bolts on the left-hand door are still secured in place.
- OPEN RIGHT HAND DOOR ONLY.
- DO NOT OPEN THE LEFT HAND DOOR. This must stay closed until the flexitank is empty.
- Remove the hose cap and connect to the site suction hose.



3. Discharge

- Open the ball or butterfly valve and start to pump. Continue until suction stops, at which point the tank should be empty.
- As a safety precaution the rear bulkhead should not be removed until the tank is empty.
- Replace fill/empty cap and secure tightly.
- The metal bars forming the Bulkhead and the left-hand door of the container together act as a restraint to hold the loaded flexitank safely in the container. With the container left hand door closed and the top bars can be removed one by one (bottom bar must stay) until the flexitank is completely empty.
- Towards the end of the discharge it may be necessary to slow down the pump speed or partly half close the valve on the flexitank to reduce suction making sure the flexitank does not get drawn into the aperture.



4. Pump Information

- Self-priming and positive displacement pumps are recommended for the fast and efficient discharge of flexitanks. **Recommended pumping speed is 400–600 litres per minute and do not go beyond 800 litres per minute.** Most gear or diaphragm pumps can be used but avoid centrifugal pumps.
- When handling Food grade products the pump supplier should certify that the pump is fit for purpose.



A1. DISCHARGE CHECKLIST

Flexitank Number : _____

No.	Item	Check for	Ok	Not Ok	Remarks
1.	Container	Position the container, so that there is a gentle slope from the front to the rear.			
2.	Container Door	CHECK that the locking bars on the left-hand door are still securely fastened..			
3.	Container Door	OPEN RIGHT HAND DOOR ONLY.			
4.	Container Door	DO NOT OPEN THE LEFT HAND DOOR. This must stay closed until the flexitank is empty.			
5.	Hose	Remove the dust cap and connect to the site suction hose.			
6.	Valve	Open the ball or butterfly valve and start to pump. Continue until suction stops, at which point the tank should be empty.			
7.	Bulkhead	Should be removed once the bars are not touching the door. Starting from the top remove the bar one by one until it is empty and then remove the bottom bars			
8.	Cap	Replace fill/empty cap secure tightly.			

Flexitank OK for Discharge

Signed _____

Name _____

Date _____

(copy to be forward to Customer & one copy to be retained by Depot)