



# Eton Citix Pedestrians OUT-North

Period Analysed: Thursday 01 June 2017 to Monday 26 June 2017



## Key Figures

- Total Traffic for the Period Analysed: 38,524
- Daily Average: 1,541
  - Weekdays: 1,541 / Weekend days: 1,541
- Busiest Day of the Week: Saturday
- Busiest Days of the Period Analysed:
  1. Saturday 17 June 2017 (2,221)
  2. Friday 16 June 2017 (2,068)
  3. Saturday 10 June 2017 (1,874)

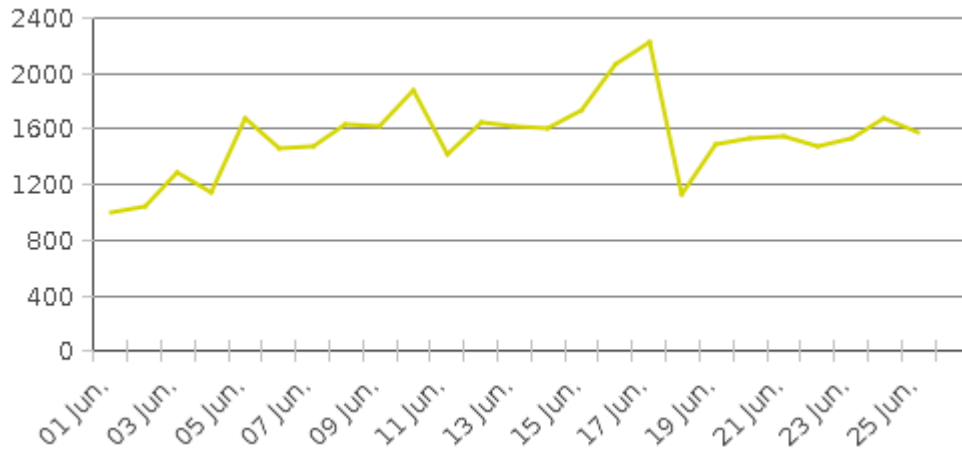


# Eton Citix Pedestrians OUT-North

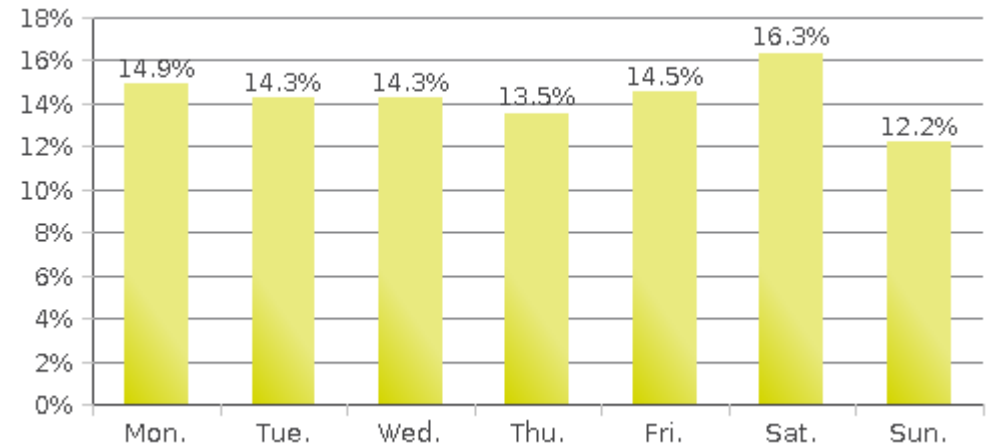
Period Analysed: Thursday 01 June 2017 to Monday 26 June 2017



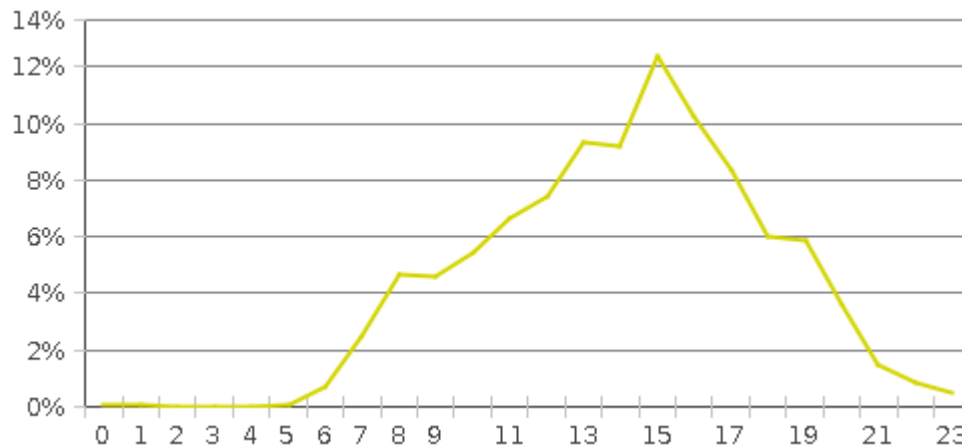
### Daily Data



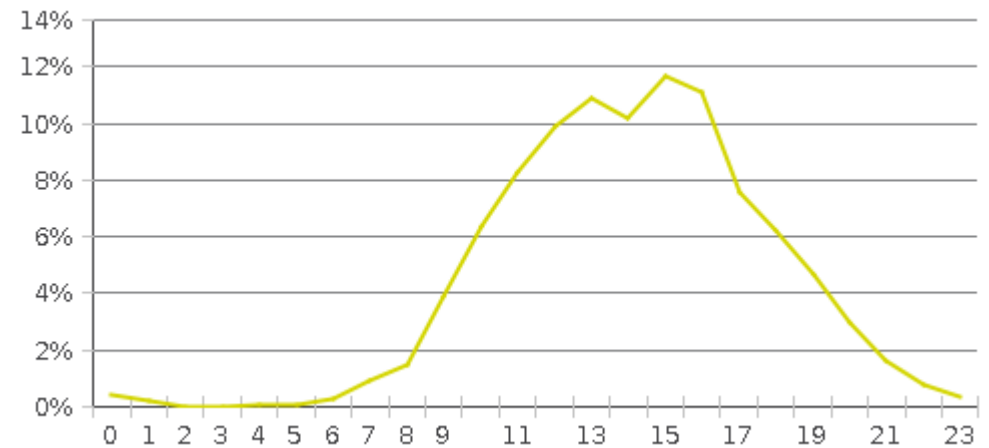
### Weekly Profile



### Hourly Profile during Weekdays



### Hourly Profile during the Weekend





# Eton Footbridge Pedestrians NB

Period Analysed: Thursday 01 June 2017 to Monday 26 June 2017



## Key Figures

- Total Traffic for the Period Analysed: 106,687
- Daily Average: 4,267
  - Weekdays: 3,608 / Weekend days: 5,668
- Busiest Day of the Week: Saturday
- Busiest Days of the Period Analysed:
  1. Saturday 10 June 2017 (6,801)
  2. Saturday 03 June 2017 (6,442)
  3. Saturday 17 June 2017 (6,247)

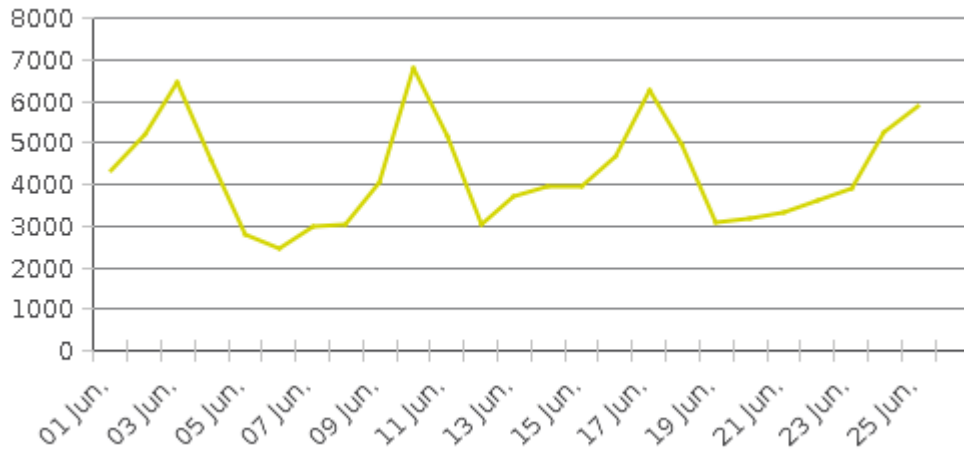


# Eton Footbridge Pedestrians NB

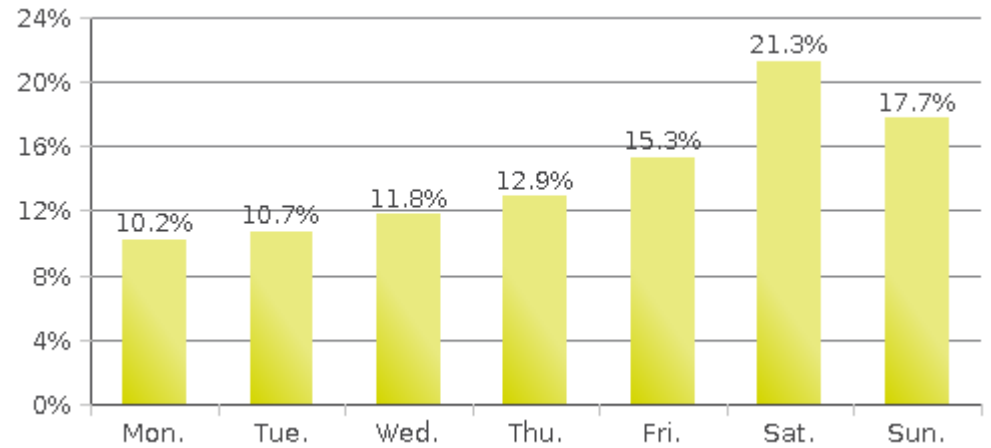
Period Analysed: Thursday 01 June 2017 to Monday 26 June 2017



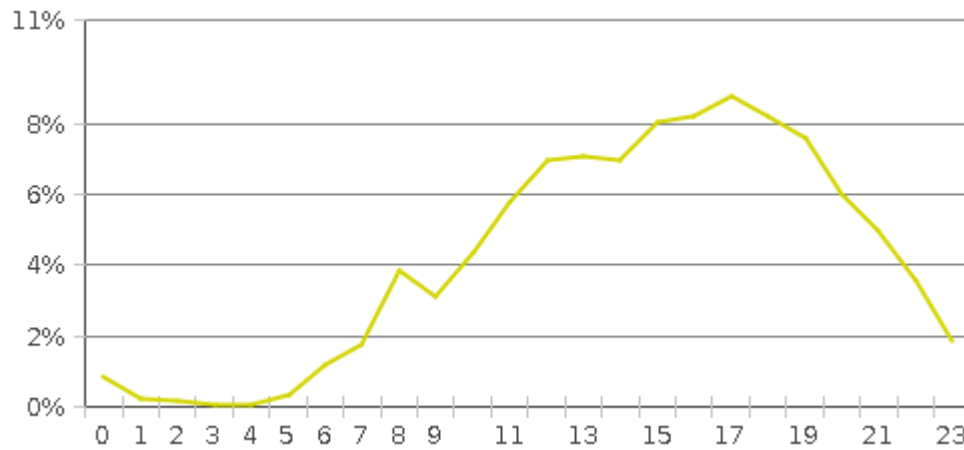
### Daily Data



### Weekly Profile



### Hourly Profile during Weekdays



### Hourly Profile during the Weekend

