

*Amador County Unified School District*  
217 Rex Avenue, Jackson, CA 95642  
(209) 257-5353 ~ FAX 257-5360

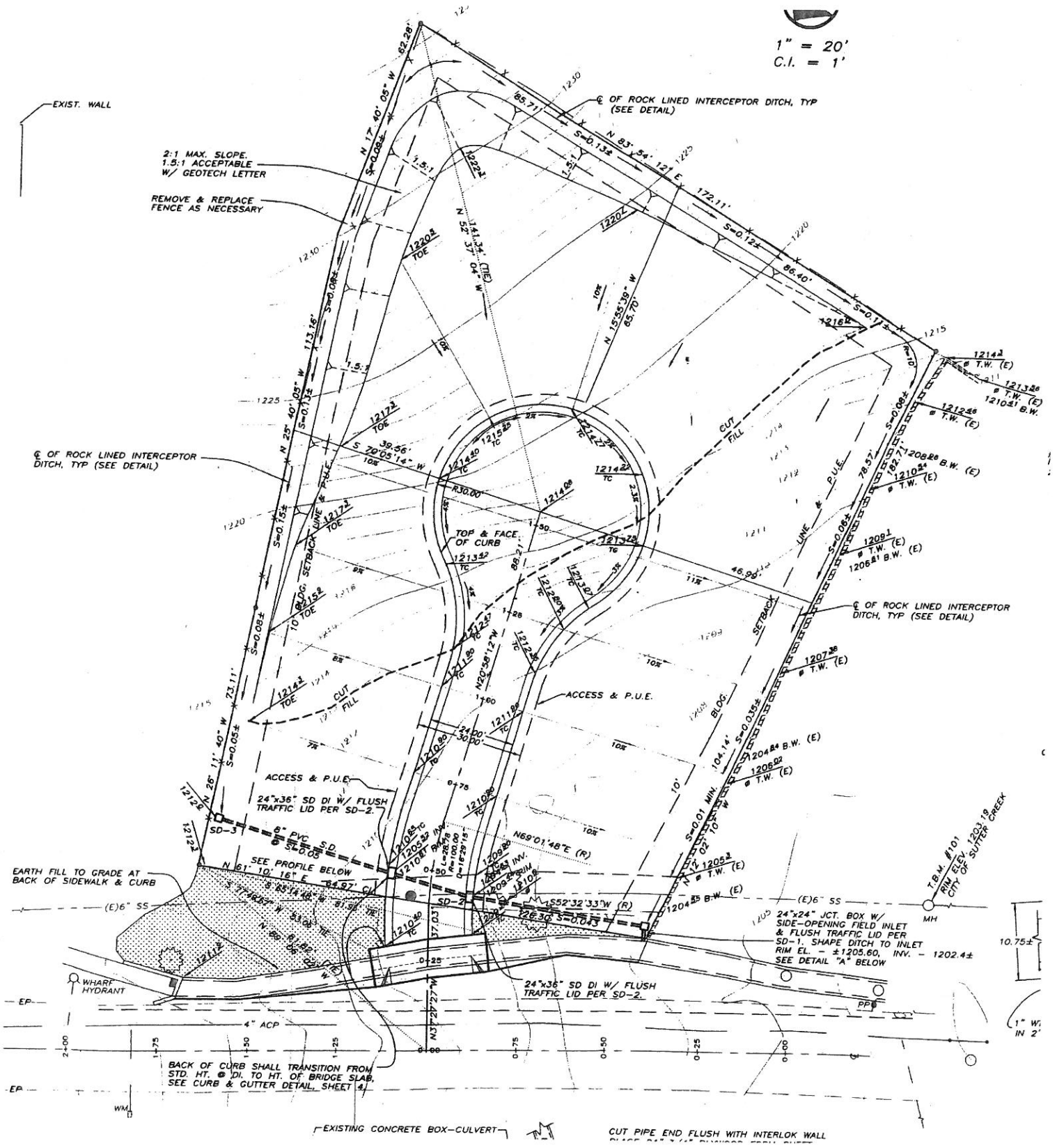
**Public Hearing: Evaluation of Real Property**  
October 25, 2017

Property adjacent to Sutter Creek Elementary School (Primary campus)  
44 Gopher Flat Rd  
Sutter Creek, CA 95685  
APN: 018-133-004-000  
Approximate size: 1 acre

In accordance with California Education Code section 17211, the board of trustees will evaluate the real property acquisition at a public hearing using site selection standards established by the State Department of Education.

The aforementioned property lies adjacent to Sutter Creek Primary School and will provide the district with the ability to expand in the future. There are no specific plans for the property at this time.

1" = 20'  
C.I. = 1'



2:1 MAX. SLOPE,  
1.5:1 ACCEPTABLE  
W/ GEOTECH LETTER

REMOVE & REPLACE  
FENCE AS NECESSARY

☉ OF ROCK LINED INTERCEPTOR  
DITCH, TYP (SEE DETAIL)

☉ OF ROCK LINED INTERCEPTOR  
DITCH, TYP (SEE DETAIL)

EARTH FILL TO GRADE AT  
BACK OF SIDEWALK & CURB  
(E)6" SS

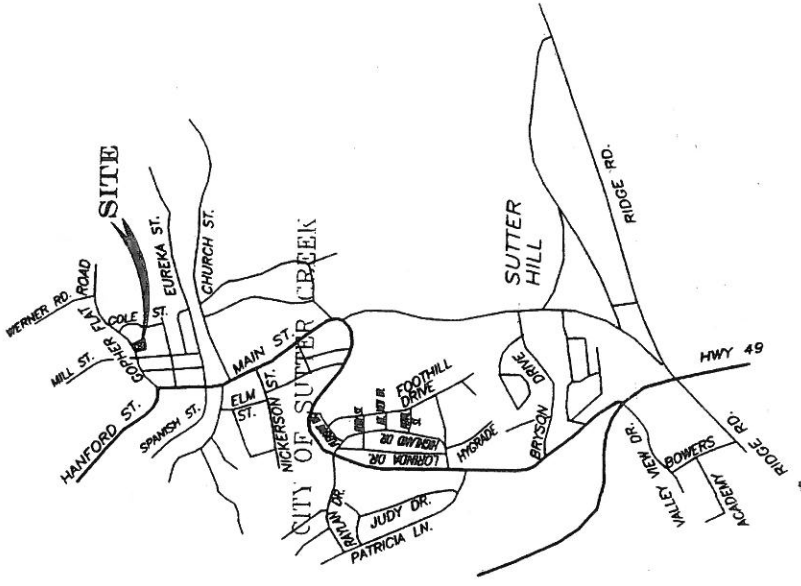
24"x24" JCT. BOX W/  
SIDE-OPENING FIELD INLET  
& FLUSH TRAFFIC LID PER  
SD-1. SHAPE DITCH TO INLET  
RIM EL. - ±1205.80. INV. - 1202.4±  
SEE DETAIL "A" BELOW

BACK OF CURB SHALL TRANSITION FROM  
STD. HT. @ 21" TO HT. OF BRIDGE SLAB.  
SEE CURB & GUTTER DETAIL, SHEET 4.

EXISTING CONCRETE BOX-CULVERT

CUT PIPE END FLUSH WITH INTERLOCK WALL

10.75±  
1" W/  
IN 2'



VICINITY MAP  
N.T.S.

