

ASX Announcement

ASX: Li3

20 June 2017

Grant of WA Licences: Hard Rock Lithium Opportunity

- **Grant of 8 Exploration Licences by the Western Australia Department of Mines and Petroleum**
- **Exploration Licences selected by a team of geoscientists with a strong track-record of mine discoveries**
- **Potential for hard-rock lithium (β -spodumene bearing pegmatite)**
- **Key plank in portfolio strategy**

Lithium Consolidated Mineral Exploration Ltd (“LCME”) is pleased to announce the grant of 8 Exploration Licences by the Western Australia Department of Mines and Petroleum (the “Licences”). The Licences hold potential for hard-rock lithium mineralisation. The location of these Licences is shown in Figure 1.

The Licences cover 367km² of known lithium-fertile “belts” undercover in the Yilgarn Craton in Western Australia and hold the potential for hard-rock lithium mineralisation.

The License areas have the following key indicators:

- pegmatites found in outcrop along strike;
- presence of “fertile” granite adjacent to regional scale structural zones and potential host rock packages;
- high grade metamorphics with potential for β -spodumene (metallurgically preferable) bearing pegmatites;
- highly favourable magnetic and radiometric signatures, similar to known Li-pegmatite deposits in the craton; and
- encouraging lithium and pathfinder geochemistry in surface materials.

The license selection was carried out by LCME’s Australian advisory team with geoscientists who have a strong track-record of discovering globally significant mines.

The Appendix has additional information on these Licences and the biographies of the Australian advisory team.

LCME has executed an Agreement for Heritage Protection Over Mining Tenure with the Ngadju Native Title Aboriginal Corporation RNTBC for the Licences.

The remaining 2 Exploration License Applications overlap conservation reserves and have been referred to the Department of Parks and Wildlife for the Minister’s comment and recommendation and cannot be granted until that process is finalised.

LCME’s Managing Director, Shanthar Pathmanathan said:

“We are well positioned to rapidly advance our high quality hard rock lithium exploration assets in Western Australia. Our expert Australian technical advisory team consider the License areas to be technically strong.”

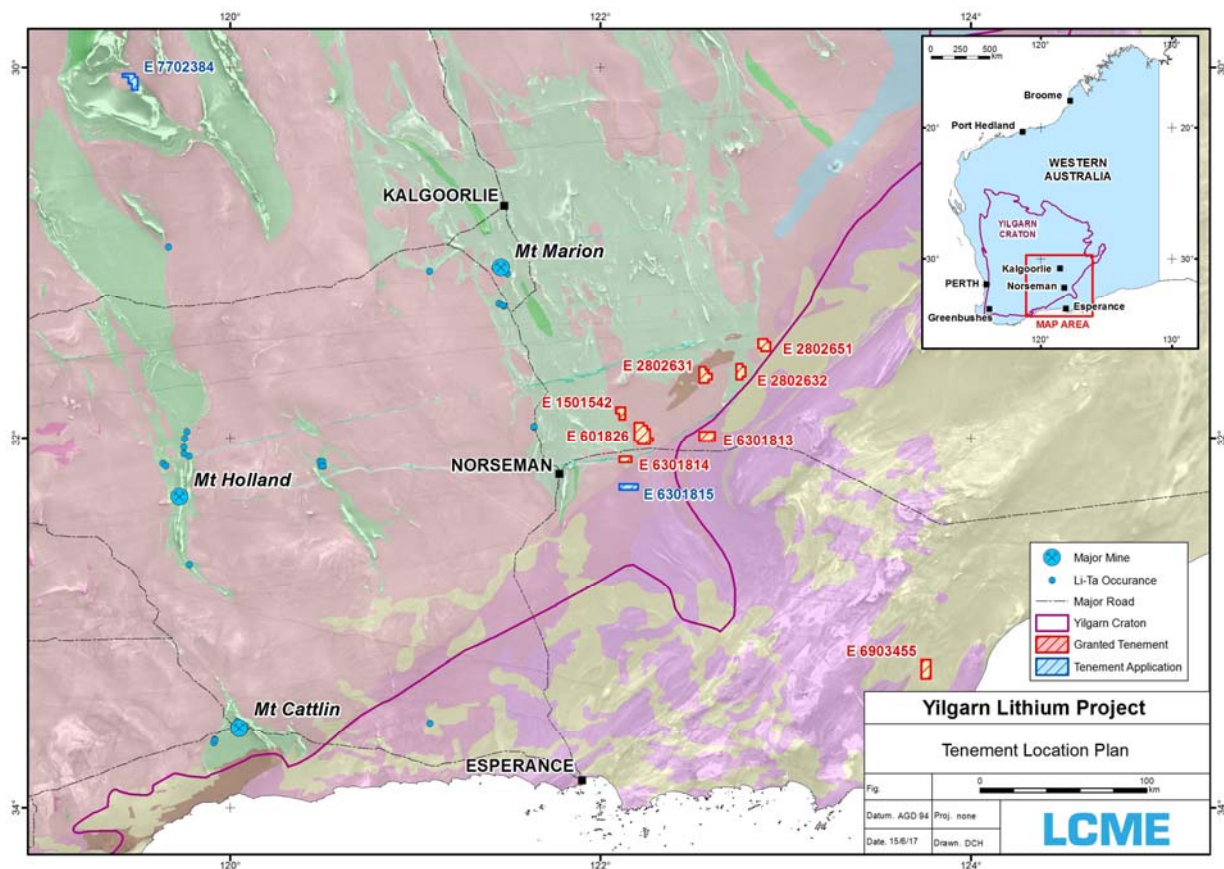
The planning of the WA exploration program has commenced. LCME’s WA hard rock lithium exploration program will be announced soon.

The securing of these Licences is part of the execution of our strategy to build a portfolio of lithium opportunities. Chairman Jim McKerlie said:

“The Company recently floated on the strength of a portfolio of lithium opportunities that are at varying degrees of advancement in the exploration cycle.

Nevada is maturing as an exploration opportunity and we now have formally commenced building the Western Australian portfolio. It is our plan to have assets at various stages in the exploration cycle and continually review the best way to build the value of each asset.”

Figure 1: Location of the granted Western Australia Exploration Licences



For more information, please contact:

Duncan Cornish

Company Secretary

Phone: +61 7 3212 6299

Email: investors@lithiumconsolidated.com

Please visit us at: www.lithiumconsolidated.com

Cautionary Statements

Forward-looking statements

This document may contain certain forward-looking statements. Such statements are only predictions, based on certain assumptions and involve known and unknown risks, uncertainties and other factors, many of which are beyond the company's control. Actual events or results may differ materially from the events or results expected or implied in any forward-looking statement.

The inclusion of such statements should not be regarded as a representation, warranty or prediction with respect to the accuracy of the underlying assumptions or that any forward-looking statements will be or are likely to be fulfilled. LCME undertakes no obligation to update any forward-looking statement to reflect events or circumstances after the date of this document (subject to securities exchange disclosure requirements).

The information in this document does not take into account the objectives, financial situation or particular needs of any person or organisation. Nothing contained in this document constitutes investment, legal, tax or other advice.

Appendix: Additional Information

Table A1: Western Australia Exploration License details

Exploration License / Application	Application Date	Area (km ²)	Status
E 6301814 (Bedonia)	30/06/16	23	Granted
E 63/1815 (Caranning)	30/06/16	35	Application pending
E 77/2384 (Windarling)	30/06/16	42	Application pending
E 69/3455 (Esmond)	30/06/16	52	Granted
E 28/2631 (Junction)	30/06/16	47	Granted
E 28/2632 (Snomys)	30/06/16	38	Granted
E 63/1813 (Ten Mile)	30/06/16	44	Granted
E 15/1542 (Nawoc)	18/07/16	29	Granted
E 28/2651 (Cool)	22/09/16	41	Granted
E 63/1826 (Dundas)	3/10/16	93	Granted

Note: Granted Exploration Licenses shown in grey shading

Table A2: LCME’s Australian advisory team biographies

	<p>Dr Douglas Haynes Haynes B.Sc (Hons), Ph.D, MAusIMM</p>	<p>Former Chief Scientist with Western Mining Corporation Ltd, then at BHP Minerals and BHP Billiton Minerals as Chief Geologist. Initiated various successful mineral resource discoveries, either directly or through collaborative effort, including seven large base metal or gold deposits: Olympic Dam Cu-Au-U-REE, Wirrda Well Cu-Au-U-REE (South Australia), Nifty Cu (Western Australia), Yandan Au (Queensland), Ernest Henry Cu-Au (Queensland), Kamoia Cu (Katanga Province, Democratic Republic of the Congo (Ivanplats Ltd), and gold deposits, particularly Yam 14 within the Yamarna greenstone belt (Western Australia).</p>
	<p>Bob Skrzeczynski B.Sc (Hons), M.Sc, DIC, MAusIMM</p>	<p>40 years experience in the global minerals exploration industry. Successful exploration discovery record (which includes discovery of the Cannington deposit, the world's largest silver producer), Eloise, Watershed and Townsville deposits. Marketing Director and Technical Advisor to the Board of Haoma Mining NL; as a Non-Executive Director of Navaho Gold Limited; Non Executive Director of Bright Star Resources Limited (formerly Tasman Goldfields Limited). Held numerous senior management positions in BHP Minerals Exploration. Holds a Masters Degree in Exploration Geology from the Royal School of Mines in London.</p>
	<p>Mark Dugmore B.App.Sc, M.Sc, MAusIMM, MAIG</p>	<p>30 years experience in the global minerals exploration industry. Served as Managing Director of Navaho Gold Limited; Non Executive Director of Bondi Mining Limited. Former world-wide head of base metals exploration at BHP Minerals Exploration. Holds a Masters Degree in Exploration Geology from James Cook University.</p>
	<p>Dr Darryn Hedger B.AppSc, M.AppSc, Ph.D, MAusIMM, MSEG, MAIG</p>	<p>Geologist / hydrogeologist with over 25 years' experience in minerals exploration. Masters Degree from University of NSW, PhD from the University of Queensland. Held positions with BHP Minerals, Freeport McMoran, BP Minerals and Zapopan, and has been involved with the discovery of several gold and uranium deposits in the Northern Territory. Has worked on gold, copper, base metal, uranium and REE projects in Australia, USA, Namibia, Turkey and PNG. Experienced geochemist who has worked in covered environment, both in Australia and international, using a variety of modern deep penetration geochemical techniques. Graduate Diploma in Hydrology from Flinders University, SA, and also specializes in hydrochemistry and groundwater modelling.</p>