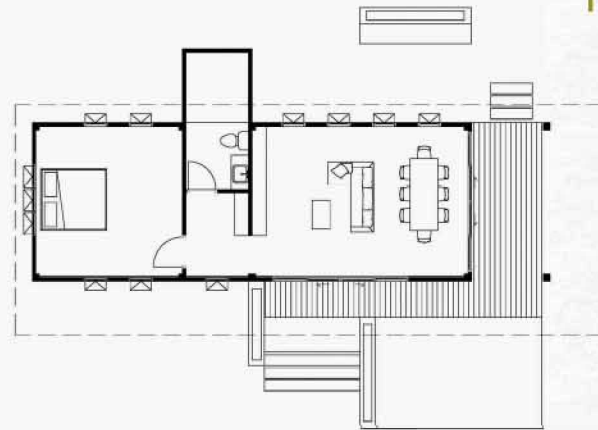


2015-2016

One-storey, 2 bedroom house, Rayong

This is a one storey, 2 bedroom, 2 bathroom house with 2 parking spaces. It is designed for middle class families on 12m x 20m land. The planning is simple. The living room has extra high ceiling with a sliding door opens out to side courtyard, creating more space and the indoor-outdoor flow. This like to have the kitchen separate from other rooms or at the back of house. In this case, I added both. I worked with a developer as the architect to design and take care of contract and construction administration to completion.

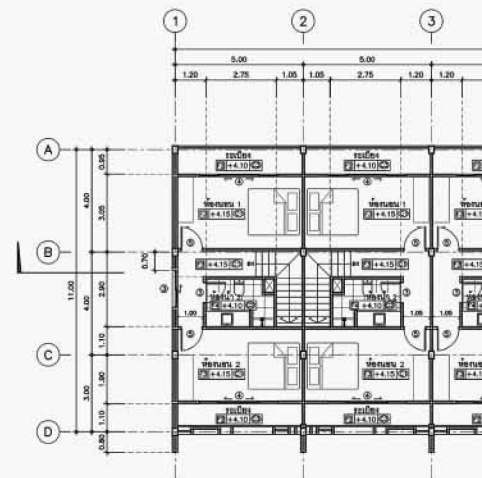
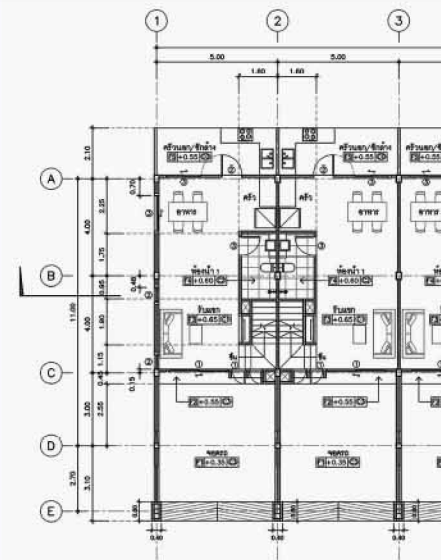


2015 Nitai's bach, Rayong, Thailand

Nitai's bach in rubber plantation land is a holiday home away from Rayong City. His dream is built a simple house and live life simply with nature. He requested for a vegetable garden, open living outdoor kitchen and shower.

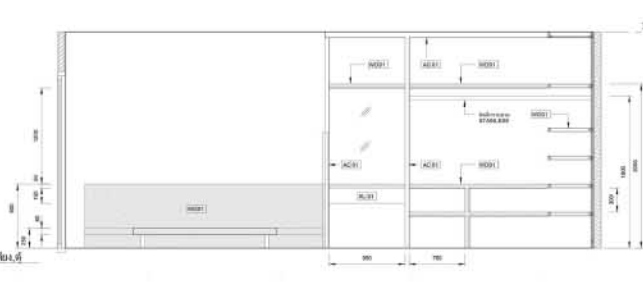
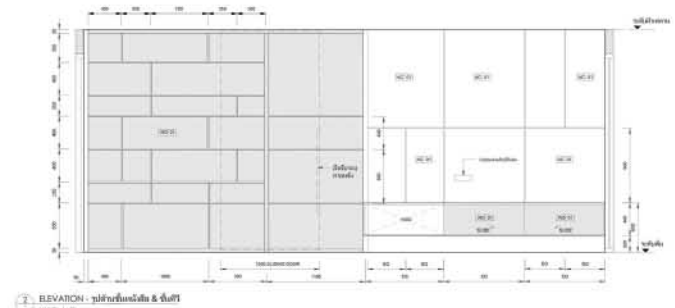
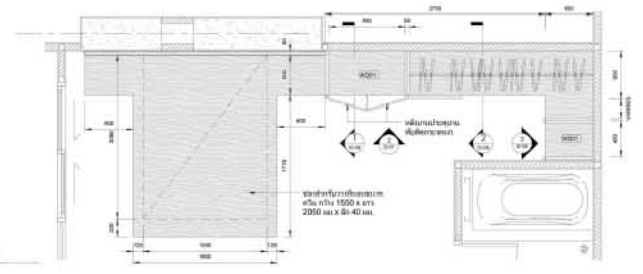
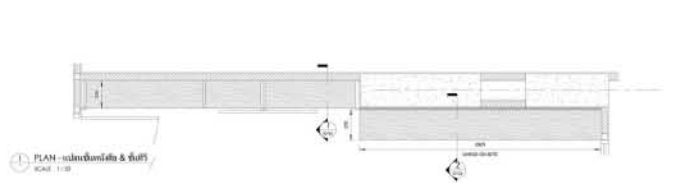
2014 Townhouse2x8, Rayong

Townhouse living is a popular lifestyle choice for small families and first home buyers. Some will turn townhouse to home office. The facade of the townhouse allows for owners to put up their business signages while others can leave them in solid colours.



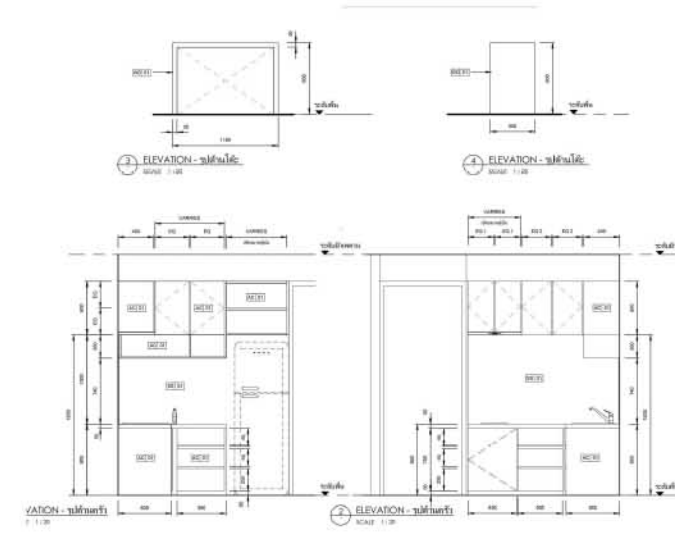
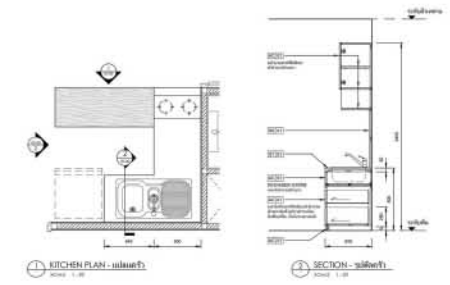
2013

Ann's one bedroom apartment, Bangkok



This is an interior fitout project for a small one bedroom apartment in Ari, Bangkok called Noble re:D. Khun Ann, the owner bought this 54 s sq.m.apartment without its given interior. She prefers all built-in furnitre, minimal style with neutral colours.

This project was done in Sketch Up and Revit for documentation.



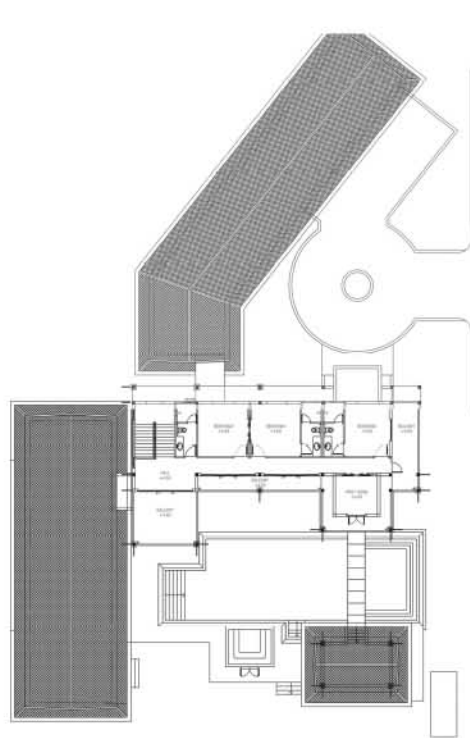
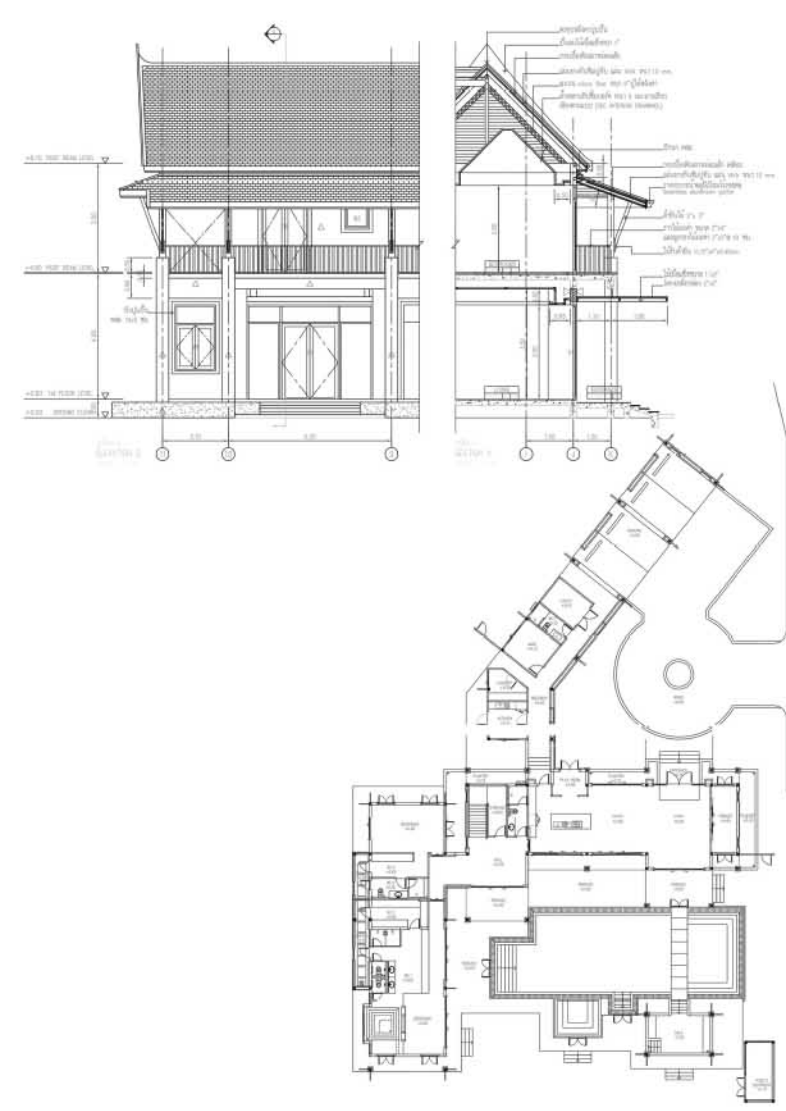
KITCHEN VIEW

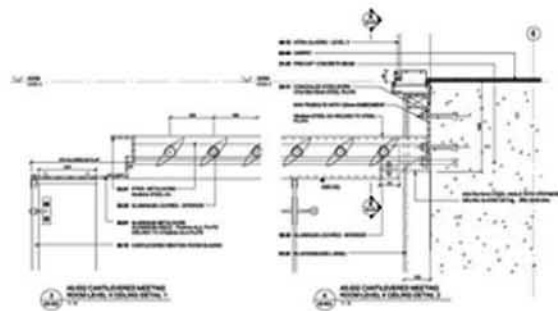
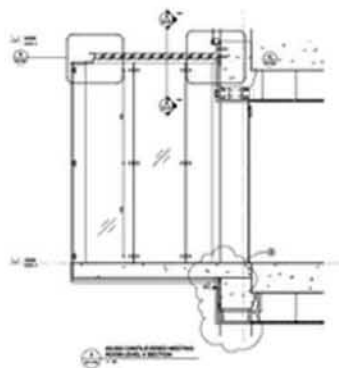
STUART & YIM'S HOUSE
LOCATION: SAMUTPRAKRAN, THAILAND
LAND: 1 RAI FLOOR AREA: 600 SQM



Stuart & Yim's house ²⁰¹¹

This luxurious 5 bedroom Contemporary Thai Style villa is designed for an American-Thai couple in Samutprakran, Thailand. It is designed to provide a resort like home for themselves and guests. I was an interior designer for this project, for the master bedroom, built-in wardrobe to all bedrooms, kitchen, library and living area. The master bedroom is spacious with a large jacuzzi, all open showers indoor and outdoor.



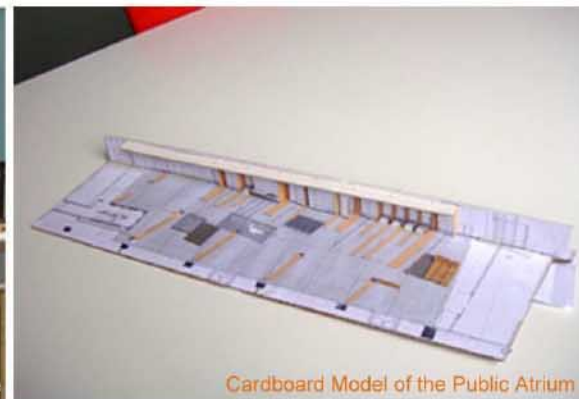


Meeting Room & Office Space BNZ Atrium

Jasmax



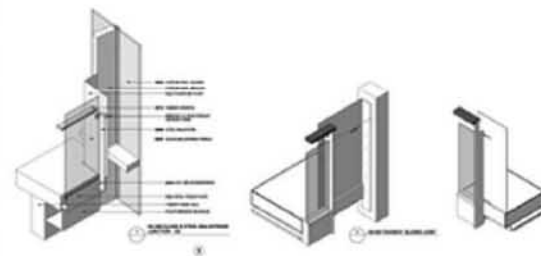
Office Space



Cardboard Model of the Public Atrium



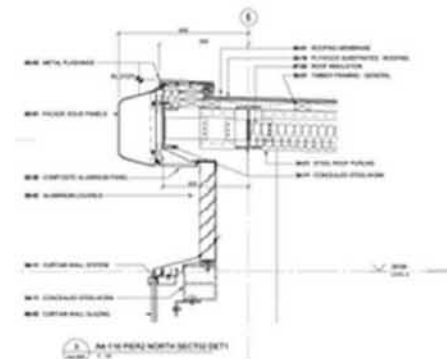
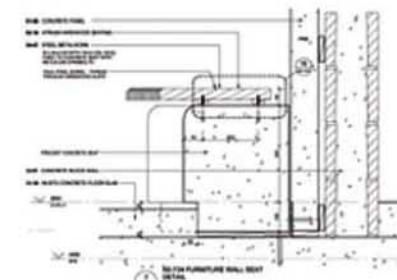
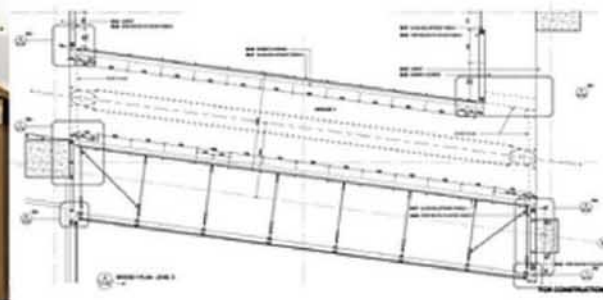
Render Image of BNZ



Innovation

- Innovation NZGBC awarded two Innovation points for the project exceeding GreenStar criteria.
- One point for Landlord provision of a state-of-the-art automated lighting control system to significantly reduce tenant lighting energy consumption
 - One point for the quantity of concrete fill material diverted from landfill by recycling on-site.

Located by Wellingtons Harbour, the space is organised to ensure that its office inhabitants get great waterfront views. Internal bridges and atria are the main circulations. These aim to create interactions and a sense of community within the working environment.



[] PRODUCT SPEC.NET

presents ...

2008

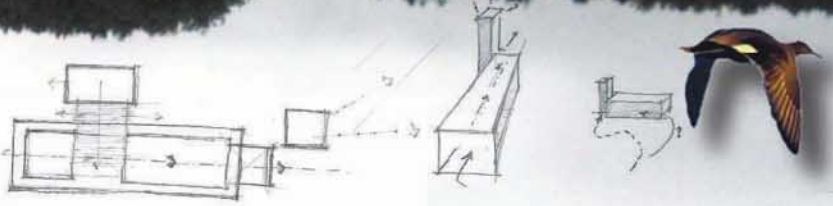
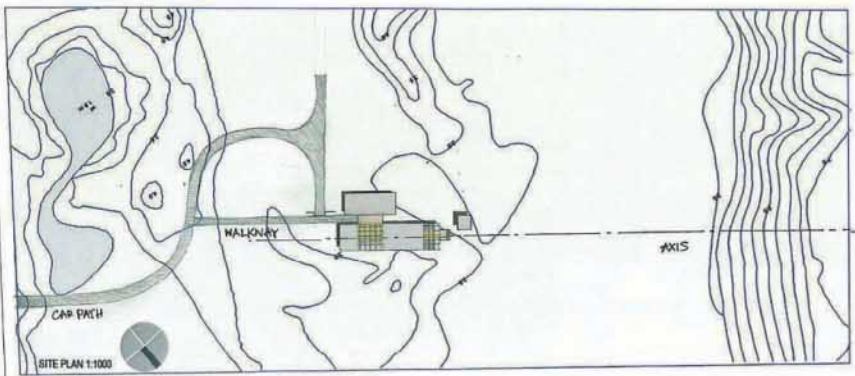
Concept

This interpretation of an idyllic family Bach handed down through family generations capturing the essential spirit of a traditional New Zealand holiday in its informal lifestyle remote from urban clamour and stress. This is represented by a series of covered and semi-covered spaces facing towards ocean views.

Siting

The Bach rests gently on undulating sand dunes. One hundred metres away is the seaside boundary. The building is an extended rectangle with a long north facing edge accessing all day sun. The road approach is directed towards space separating two dwelling units, this forms a directional axis.

Paetawa Rd



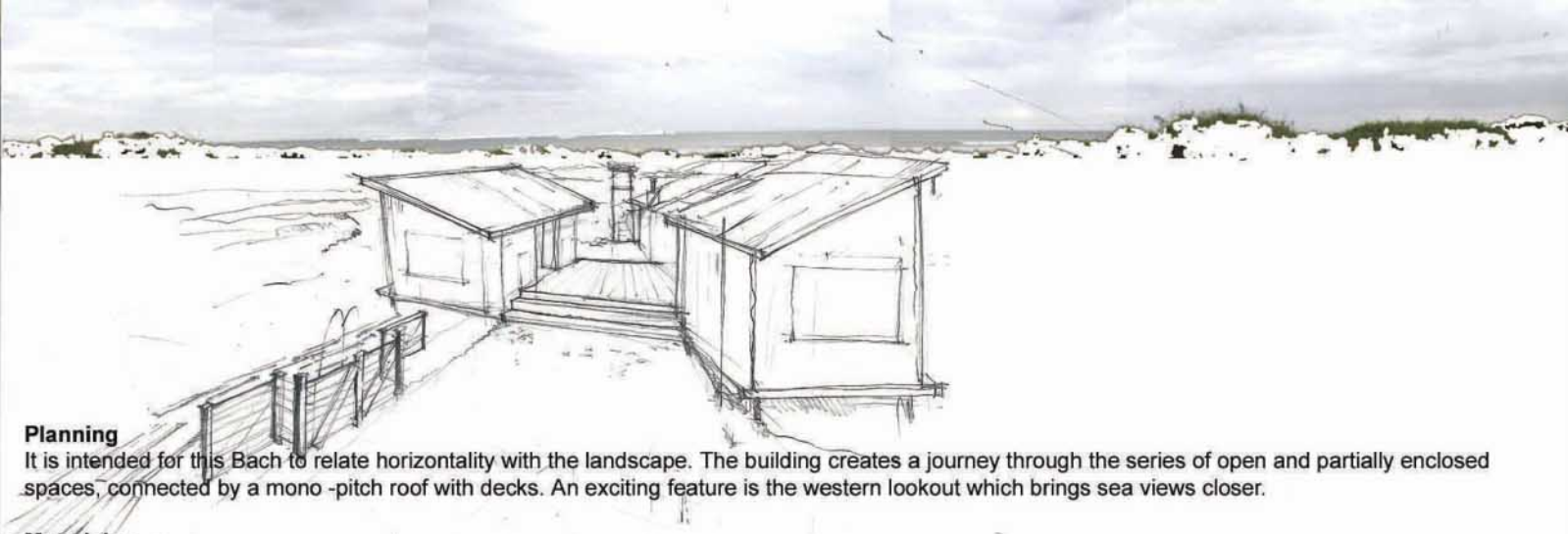
DESIGN COMPETITION

New Zealand's most exciting and inspirational residential design competition open to Architecture & Design Practices & Graduates

Design a contemporary bach on this six-acre site, positioned in a wild and natural coastal habitat including a pond, tussock-clad gradients and sand-dunes ambulating to the ocean's edge.

WIN THE COMMISSION

Deadline: 21 May 08

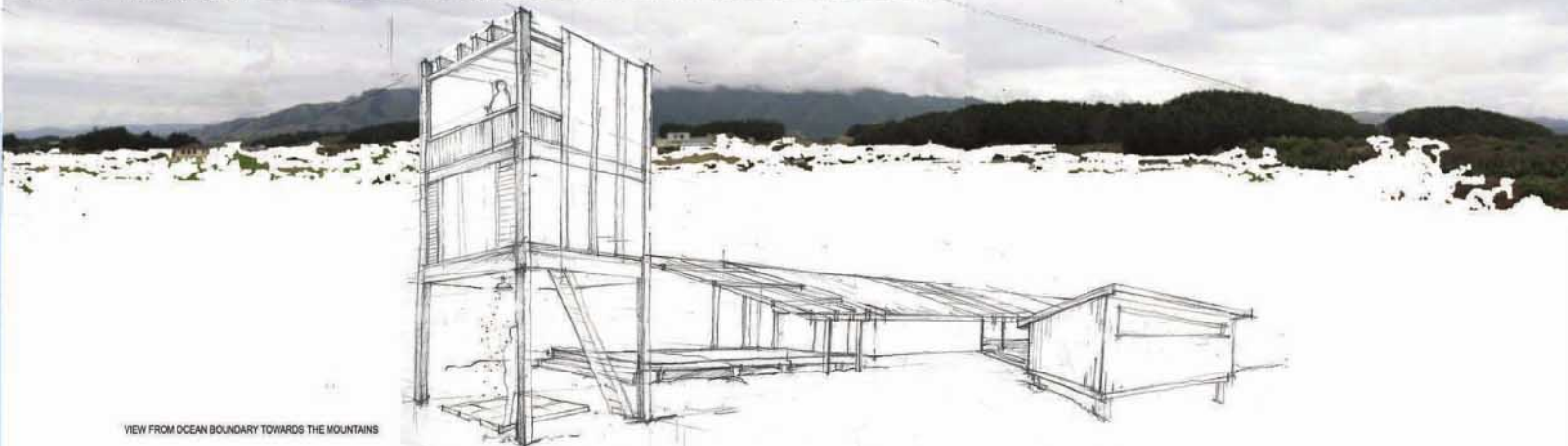


Planning

It is intended for this Bach to relate horizontality with the landscape. The building creates a journey through the series of open and partially enclosed spaces, connected by a mono-pitch roof with decks. An exciting feature is the western lookout which brings sea views closer.

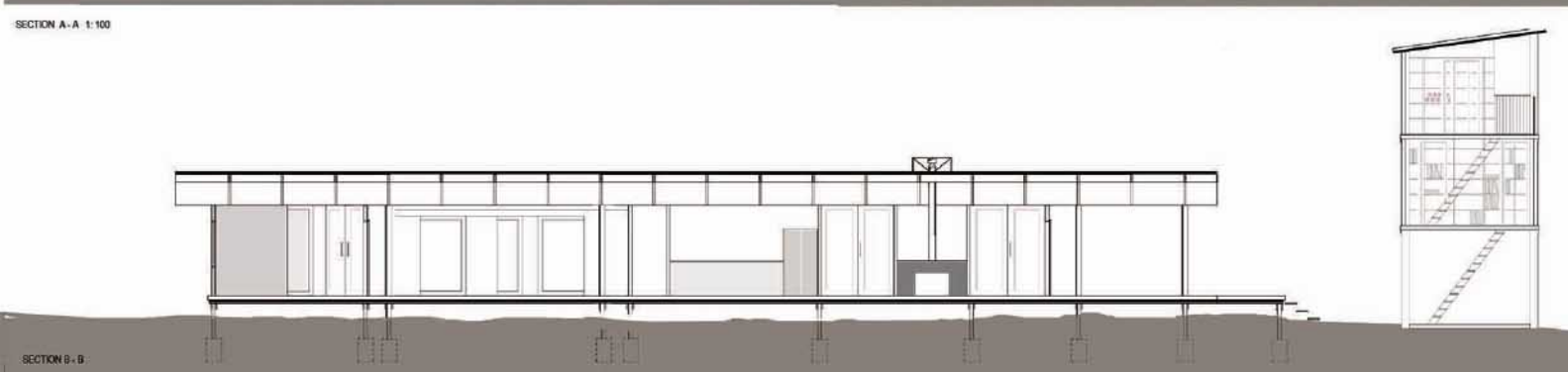
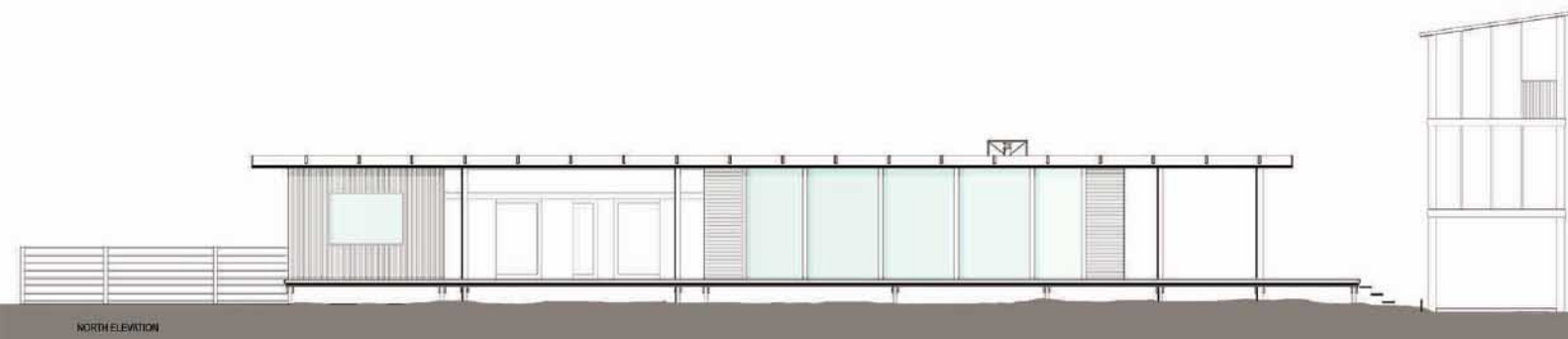
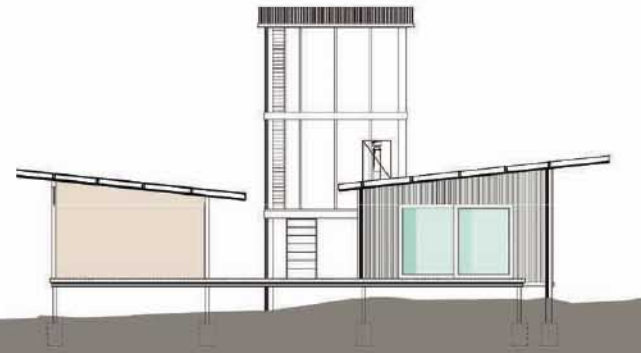
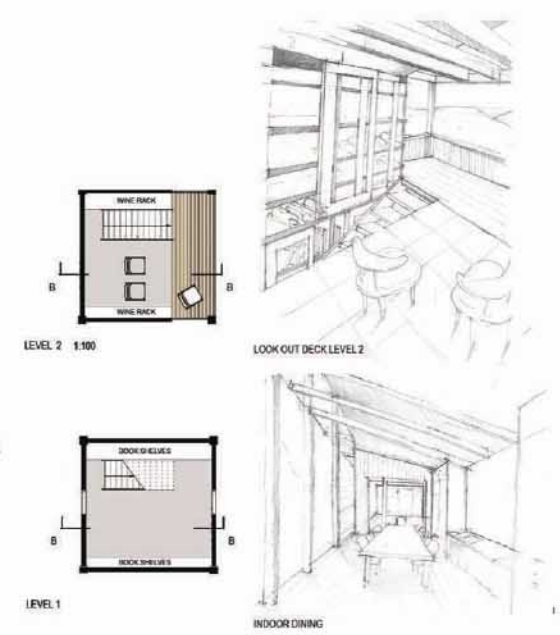
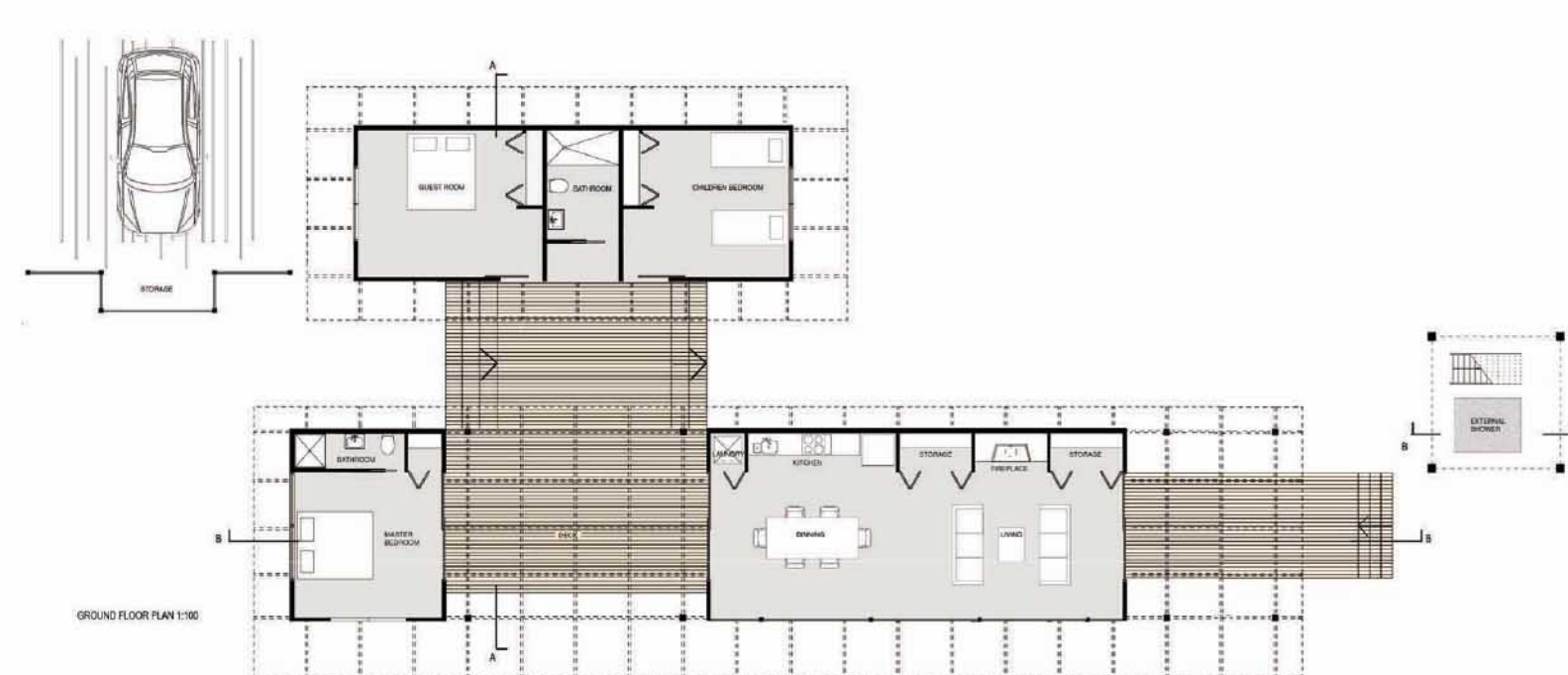
Materials

The coastal site is highly exposed and materials chosen were sawn timber, Onduline, colour coated aluminium joinery which are low maintenance and of reasonable cost. Timber will dissolve with age and tone in with the bleached land colours.



VIEW FROM OCEAN BOUNDARY TOWARDS THE MOUNTAINS

Graduate architect, Tida Polyudhapoom from Jasmx, Arun Hazarika from Melling- Moose Architects and architect mentor, Gerald Melling were one of the 6 finalists out of 33 entries nationwide.



2010 Harvey - Green House

Jasmax

Residential work is supervised by Philip Porritt. Philip is a senior registered architect and one of Jasmax's directors at the Wellington office. He specialises in high quality residential projects, heritage refurbishment and interior fit-out.

His basic principles lie in **1.** Practical maintenance (good house-keeping and the prevention of decay) **2.** Restoration (reviving the original spaces and house details) **3.** Habitation (modernisation of contemporary lifestyles, making redundant space usable with reconstruction where necessary) and **4.** Making sure that 'getting things right' leads to client satisfaction.

Recently completed on 7th of Dec 2010, this 1950's house has been totally transformed into a stunning 4 bedroom home with modernised living areas. On level 2, the living and family areas have been extended north with an exterior deck to enhance outdoor living. This area has great sun and views. Exterior deck steps were a welcome addition connecting the courtyard below. The entire house has been completely renovated. Some of projects original features have been restored in keeping with its age.



Demolition started 4th April 2010



September 2010

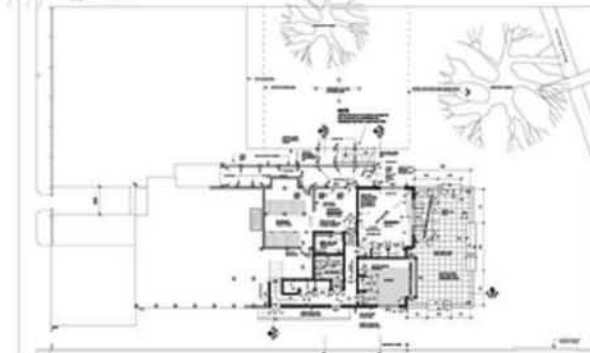


Nearly complete 1 December 2010



EXISTING FLOOR PLAN / SITE PLAN

LEVEL 1



FLOOR PLAN / SITE PLAN

LEVEL 1



EXISTING FLOOR PLAN / SITE PLAN

LEVEL 2



FLOOR PLAN / SITE PLAN

LEVEL 2



SOUTH ELEVATION



EAST ELEVATION



NORTH ELEVATION



WEST ELEVATION

2010 Lake Crescent, Hamilton

O'Meeghan House

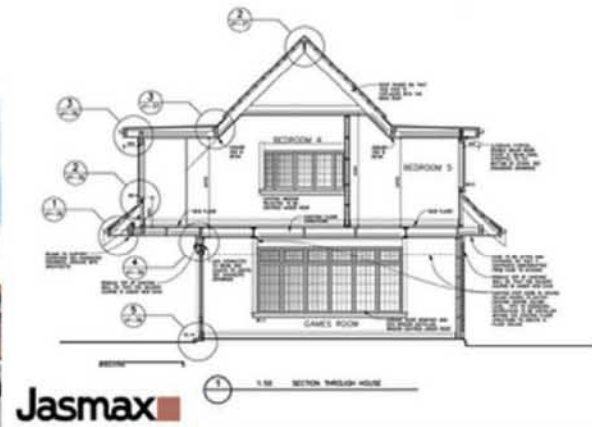
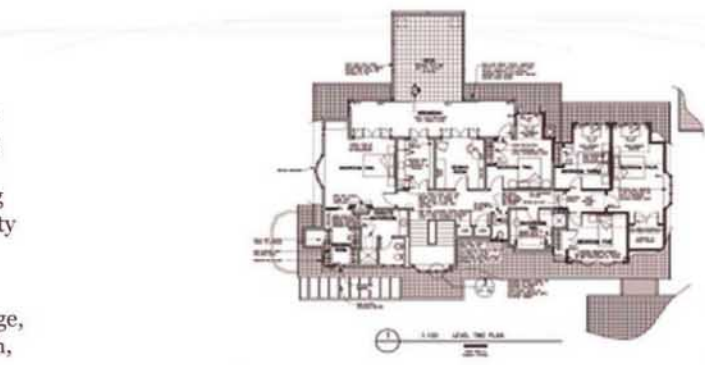
Completed: March 2009



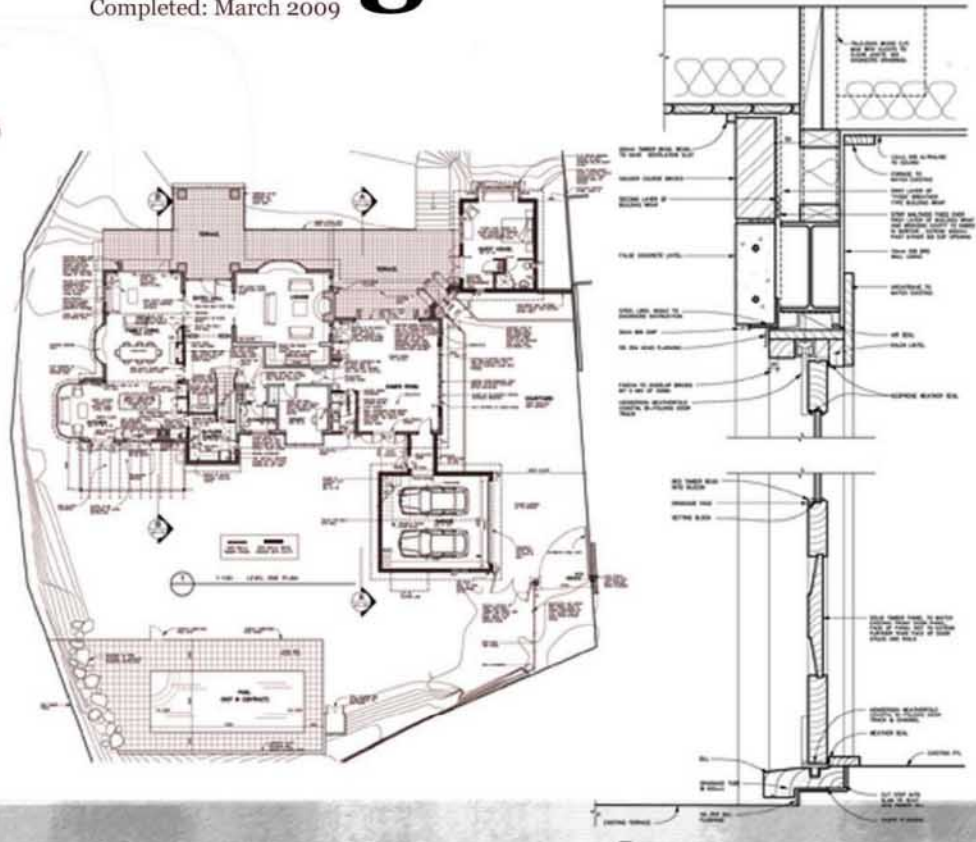
Overlooking a Hamilton waterway, this project required a major extension to the existing house. The building method and materials used differed from previous work. It has brick cladding over timber frame. This allows structural flexibility during an earthquake.



The additions include a guest room, double garage, ground level games room, and 3 upper floor bedrooms.



Jasmax



Khandallah Shackleton House 2009

Existing Plan



Proposed Plan



Before



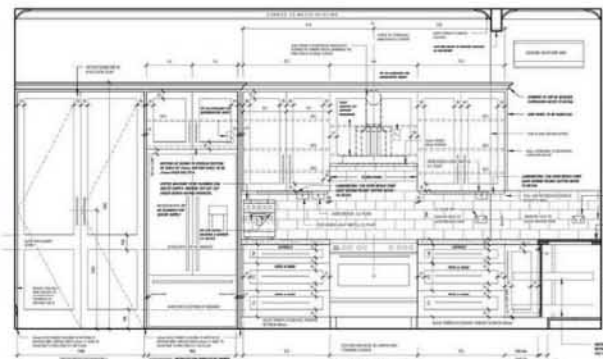
After



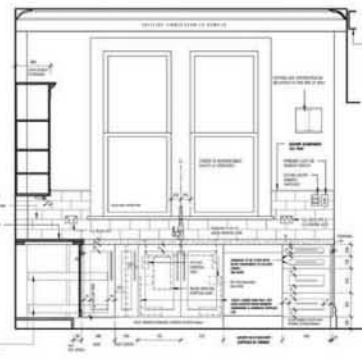
August 2010 **Jasmax**



..... This project's brief was to remove an existing post so better access between the kitchen and family room could be obtained. Steel beams were used to help span the longer distance and transferring of perimeter wall loads. The kitchen, cloakroom and laundry were fully removed then redesigned with new joinery. We gained more space and utilised every millimetre into in a new kitchen.



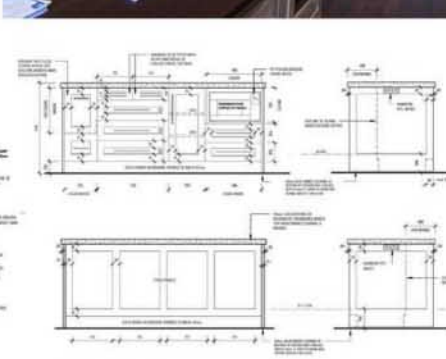
Kitchen



Kitchen

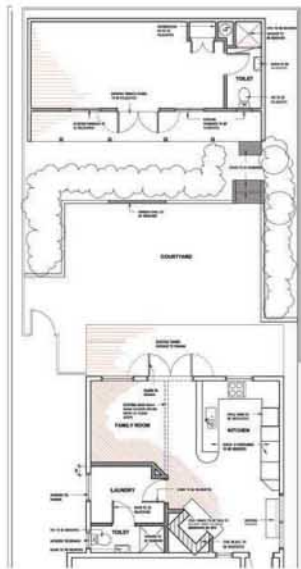


Laundry doors removed for clarity



Island Bench





Existing Plan Level 1

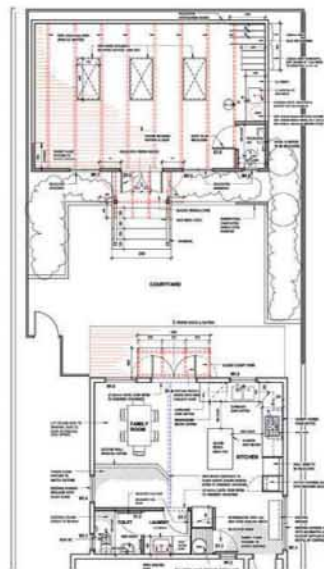


Before



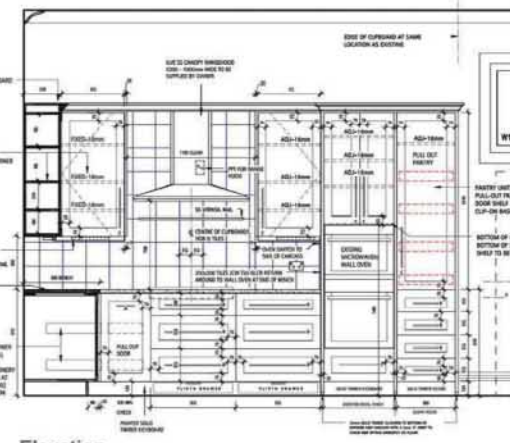
Piera in her living area

"I'm a painter who draws and paints every day" she describes herself.

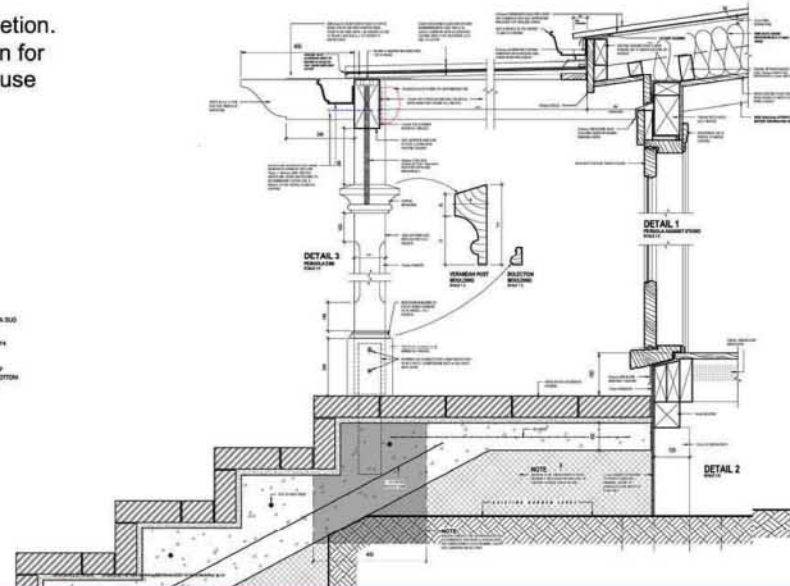


Floor Plan Level 1

My involvement in this project was from start to completion. I was required to produce all necessary documentation for consent approval. Piera's house was published in House & Garden magazine, 2009.



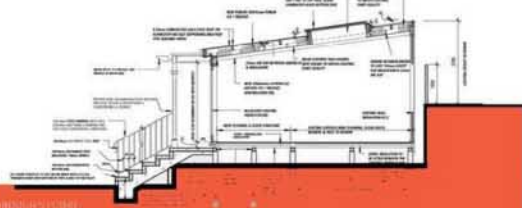
Elevation



Piera is a famous New Zealand contemporary artist who has worked for many years in Paris and Moscow. In 1990, Piera returned to New Zealand living in Hawke's Bay. She then established a studio to continue painting. In 2008, she moved to Thorndon in Wellington City. This house was large but had insufficient space to paint. The brief was to extend the existing sleep out into an art studio, upgrade her existing kitchen, laundry and cloakroom making it large enough for wheel chair access.



WEST FAC ELEVATION



SECTION THROUGH EXTENSION



Piera in her new studio

2009 Jasmx

Project Cost: NZD60,000

Piera McArthur House Thorndon

Completed: June 2009



Studio in back courtyard

Antonopoulos House Karori 2008



Existing Plan Level 1



Floor Plan Level 1

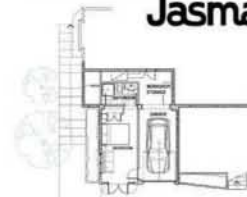


Existing Fireplace



New Steel Beams

Jasmax



Proposed Ground Level



... My first residential alteration. I was tasked to produce a full set of drawings for construction. This included upgrading the existing kitchen, laundry and cloakroom. Better dining room access was also required. The services of a structural engineer were needed to remove an existing fireplace allowing for open plan living, flowing kitchen and dining area. Two steel beams were added for strengthening under the stair landing and these also created more family room space.

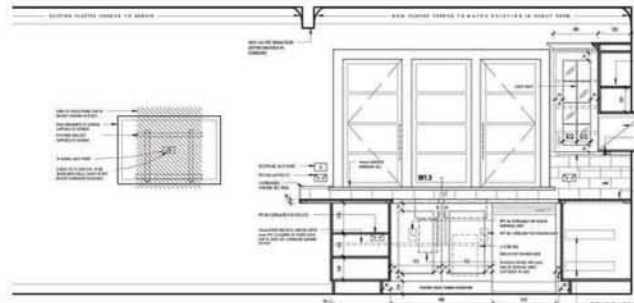
The clients were very appreciative with this house's transformation. In May 2010, they came to us with an idea to convert part of the existing garage space into a bedroom with bathroom ensuite. The challenge was to improve existing damp conditions and make it a habitable space. Construction is scheduled to start in 2011.



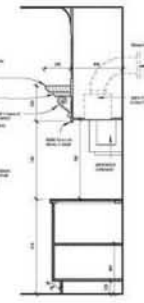
South Elevation



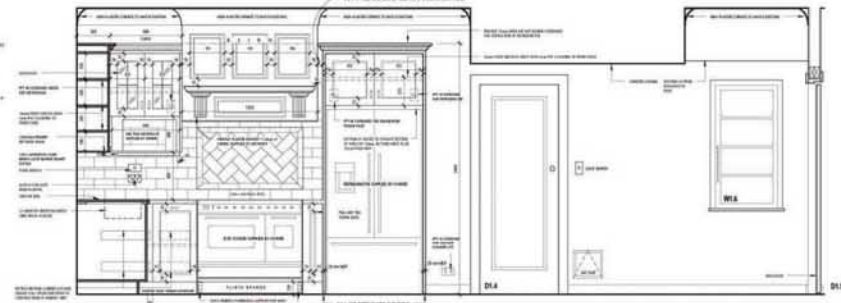
Front Elevation of House



Elevation of family room & kitchen



Section through rangehood



Elevation of kitchen