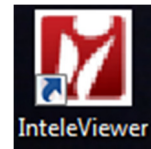


## HOW TO INSTALL INTELEVIEWER ON YOUR COMPUTER

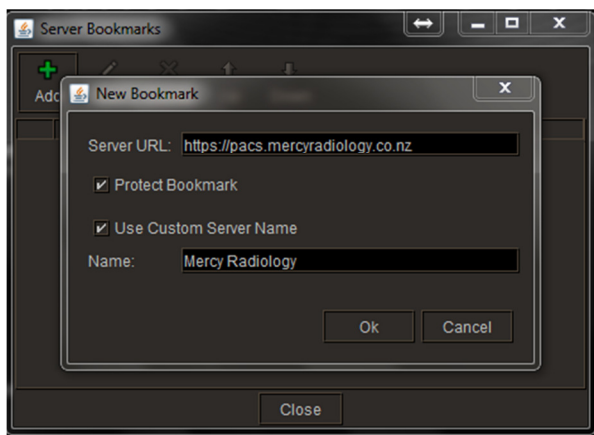
1. Go to Mercy Radiology's website by clicking on the link [www.radiology.co.nz](http://www.radiology.co.nz)
2. Click on the Doctors Images access icon



3. Download the correct IntelViewer Software for your computer. (If you do not know if your computer is 32 or 64-bit click on your Start button, go to My Computer, click on System Properties, you'll see on system type 32 or 64 bit operating system).
4. If asked click 'run' – the downloading and installation process can take up to 5 minutes.



5. A red IntelViewer icon will appear on your desktop.
6. Double click this icon to open the programme
7. You will be prompted to enter a PACS address  
Please type <https://pacs.mercyradiology.co.nz>  
Click the Protect Bookmark and Use Custom Server Name boxes.  
Also add in the Name: Mercy Radiology and click OK



8. If you do not yet have an account – click on the 'Apply for Account' and once on the Mercy site click on Apply for Account and complete the form. You will be contacted shortly with confirmation of account.  
Please fill in as much information as you can to allow us to process your application as quickly as possible.

