






## Key Features

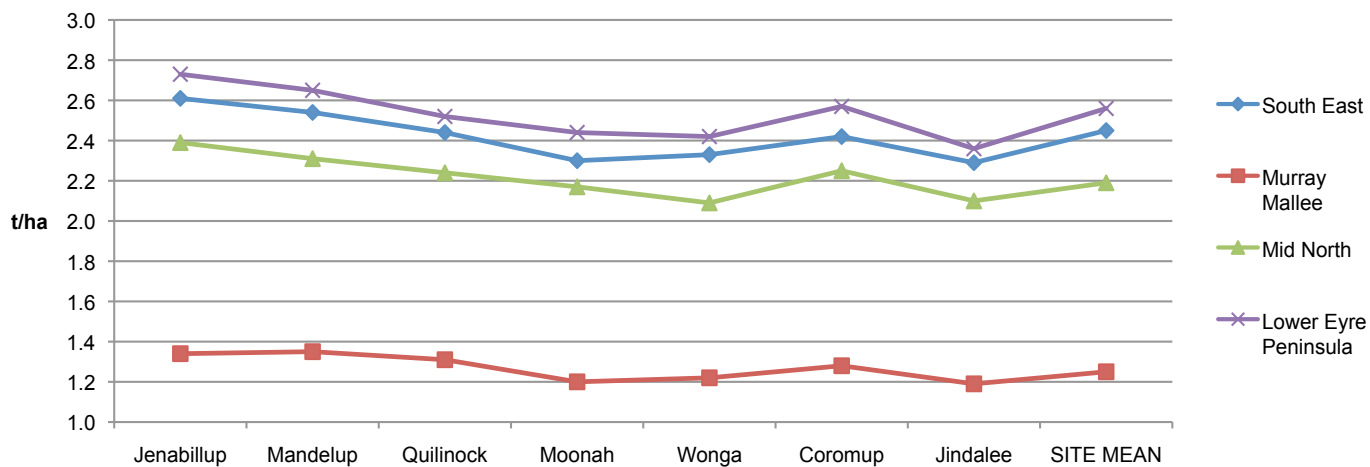
- ✓ Jenabillup's are a medium-tall, early flowering narrow leaf lupin
- ✓ Jenabillup's have consistently outyielded all other narrow leaf varieties, resulting in a long term average of 4% above Mandelup
- ✓ Jenabillup's have good early vigour and exhibit reasonable tolerance to tough dry seasonal conditions
- ✓ Lodging resistance is similar to Jindalee in the higher rainfall environments
- ✓ Seed size is relatively consistent with that of Mandelup
- ✓ Jenabillup's are the only narrow leaf lupin variety to have greater tolerance and higher yields in the presence of "black pod syndrome" disorder
- ✓ Moderate resistance to pod loss/shatter at harvest
- ✓ Increased resistance to Brown Leaf Spot & CMV seed transmission
- ✓ Anthracnose resistance status is moderately susceptible, similar to Merrit and Jindalee
- ✓ Jenabillup's are very sensitive and will not tolerate the herbicide Metribuzin

## Yearly Rainfall:

	 Low <380	 Med 380-480	 High >480
	Jenabillup	Jenabillup	Jenabillup
Time of sowing	late April-early May	late April-early May	early - mid May

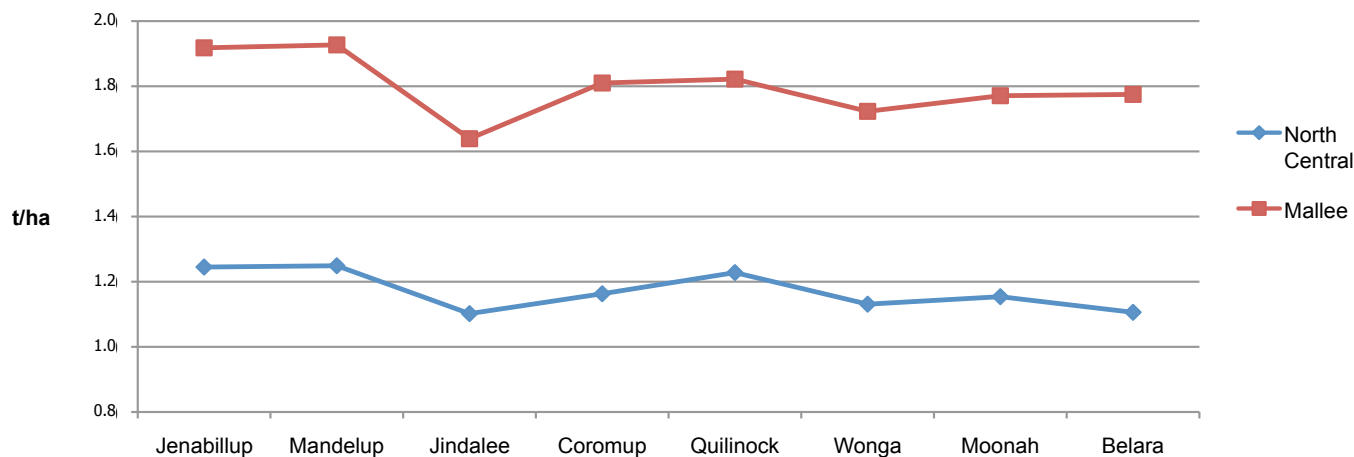
# Variety Specific Agronomic Information

## SA Long Term (2000-2009) Mean Regional Grain Yield - t/ha

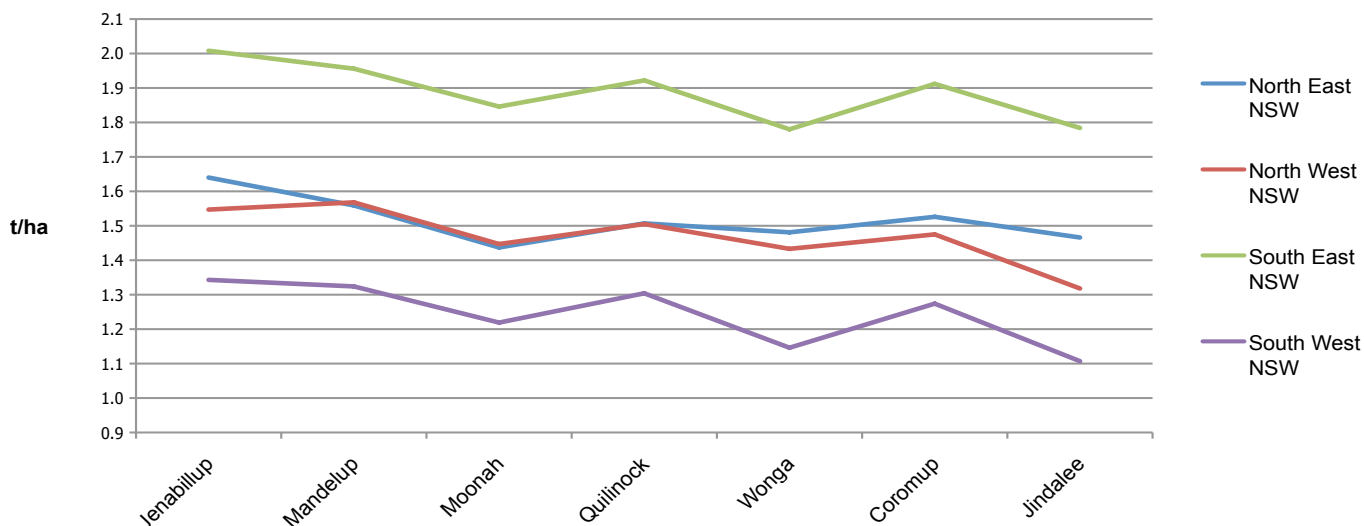


NVT & SARDI Sites Across Years : Sth East - Field, Keith, Mundulla, Frances, Kybybolite; Murray Mallee - Lamero ; Mid North - Spalding; Lower Eyre Peninsula - Wanilla, Ungarra, Tooligie. (Data Source: NVT / SARDI / GRDC)

## Victoria Long Term (2000-2009) NVT Mean Regional Grain Yield - t/ha



## NSW Long Term (2000-2009) NVT Mean Regional Grain Yield - t/ha



## Plant Profile

	Flowering	Height	Early Vigour	Lodging	Pod Loss / Shatter	Seed Colour	Seed Alkaloids	Seed Size	g/100 seeds	Protein Content
Jenabillup	early	med	med	MR	MR	light brown	low	medium-large	13-15	moderate
Mandelup	very-early	tall	fast	MS	R	brown	low-medium	medium-large	13-15	moderate
Moonah	early	tall	fast	MR-MS	MR-MS	brown	low-medium	large	15-16	moderate
Wonga	early	med	med	MR	MS	brown	low	medium	12-13	moderate
Quilinoack	early	med	med	MS	MR	light brown	low	large	15-16	moderate
Coromup	early-mid	med	med	MS	MR	light brown	low-medium	large	15-16	high
Quilinoack	early	med	med	MS	MR	light brown	low	large	15-16	moderate
Jindalee	late	tall	med	MR	R	brown	medium	medium-large	13-15	moderate

Source - Field Crop Pathology Unit (SARDI). Coromup & Jenabillup information based on WA data.

## Disease Profile

	Anthraxnose	Brown Leaf Spot	Pleiochaeta root rot	CMV (seed)	Phomopsis (stem)	Phomopsis (pod/seed)
Jenabillup	MS	MR	-	MR	MR-MS	R
Mandelup	MR	MS	S	MS	R	R
Moonah	MR-MS	S	MS	MS	MR	-
Wonga	R	MR-MS	S	MR	MR	MR
Quilinoack	S-VS	MR-MS	S	MS	MR	S
Coromup	MR	MS	-	MR	R	R
Merrit	MS	MS	S	MS	MR	MR
Jindalee	MS	MR	MR	MS	R	R

R = Resistant; MR = Moderately Resistant; MS = Moderately Susceptible; S = Susceptible; VS = Very Susceptible. # = these varieties may be susceptible if alternative strain is present. (Source - Field Crop Pathology Unit (SARDI)). Coromup & Jenabillup information based on WA data.

Jenabillup is the only lupin variety to have greater tolerance and higher yields in the presence of “black pod syndrome” disorder.

“Black Pod Syndrome” reported in WA is thought to be a plant reactive response to Bean Yellow Mosaic virus infection.

Jenabillup has a moderate to high aphid resistance level similar to Mandelup.

CMV (Cucumber Mosaic Virus) plant symptoms and seed transmission rate are at a lower level in Jenabillup compared to the variety Mandelup.

Note- It is always important to sow disease free seed, make use of any aphid prevention seed treatment options, monitor crops early for the presence of aphids and apply a registered rate of insecticide if required.

## Variety Specific Agronomic Information

### Contact & Seed Purchasing

Jenabillup is sold through your local rural seed retail agent. Check with your local store for seed availability and seek advice from your agronomist on optimum sowing time and crop management. Wholesale distribution by Viterra Seeds.

CONTACT - Viterra Seeds on Toll Free Number 1800 018 205 Website Seeds section - [www.viterra.com.au/agriproducts/seed](http://www.viterra.com.au/agriproducts/seed)

Craig John - Seeds Manager for SA/WA mobile 0437 011 907 [craig.john@viterra.com](mailto:craig.john@viterra.com)

Jason Scott - Seeds Manager for VIC/Sth NSW mobile 0458 009 804 [jason.scott@viterra.com](mailto:jason.scott@viterra.com)

Chris Farlow - Seeds Manager for Nth NSW/Sth QLD mobile 0439 277 122 [chris.farlow@viterra.com](mailto:chris.farlow@viterra.com)

### Plant Breeding Rights & Royalties<sup>Ⓢ</sup>

Jenabillup lupins are protected by Plant Breeder's Rights (PBR). Any unauthorised commercial propagation or any sale, conditioning, export, import or stocking of propagating material of this variety is an infringement under the Plant Breeder's Rights Act 1994. Growers are allowed to retain seed from production of this variety for their own use as seed only. (Grower to Grower seed sales are NOT permitted). An end point royalty of \$2.30 per metric tonne (GST excl.) is payable on all production excluding farm saved seed.

Viterra manages the collection of End Point Royalties (EPR) as part of the Plant Breeders Rights variety licencing agreement. The royalties are collected for investing back to the plant breeder for research and development of improved varieties for Australian farmers.

### Breeding

Jenabillup (tested as WALAN2224) was bred by Senior Plant Breeder Dr Bevan Buirchell in cooperation with the Department of Agriculture and Food lupin breeding team. Pedigree: 1995 cross (95L256-17-3) between 84A086-73-10-37 and Quilinock. Full pedigree: (Gungurru/CE2-1 1)/Quilinock.



Department of  
Agriculture and Food

