

# — DESIGN FIRST — BUILD SMART

SUSTAINABLE BUILDINGS BY LUXEMBOURGISH  
ARCHITECTS AND CONSULTING ENGINEERS

*FIRST EDITION 2017*

**OAI**

ORDRE DES ARCHITECTES  
ET DES INGENIEURS-CONSEILS

**LU<sup>X</sup>EMBOURG**

LET'S MAKE IT HAPPEN









# DESIGN FIRST – BUILD SMART

SUSTAINABLE BUILDINGS BY LUXEMBOURGISH  
ARCHITECTS AND CONSULTING ENGINEERS

*FIRST EDITION 2017*

# — Impressum

**Published by**

Ordre des Architectes et des Ingénieurs-Conseils  
Forum Da Vinci  
6 bd Grande-Duchesse Charlotte - L-1330 Luxembourg  
T. +352 422406 - M. oai@oai.lu

**Editors**

Pierre Hurt  
Yann Jegu  
Katrijn Van Damme

**Proofreading translations**

Robert Philippart

**Designed by**

Comed - Luxembourg

**Printed by**

Reka - Luxembourg

**Print run**

2000 copies

**Pages**

184

**ISBN**

978-2-919912-32-2

**Copyright**

©OAI 2017

Follow OAI on social media:





## — Summary

1. Foreword by Etienne SCHNEIDER,  
Deputy Prime Minister and Minister of the Economy p.3
2. Foreword by Pierre HURT, CEO OAI p.5
3. Ordre des Architectes et des Ingénieurs-Conseils  
Grand-Duché du Luxembourg (OAI) p.7
4. 62 projects abroad p.11
5. 19 certified ecological projects in Luxembourg p.139
6. Discover Luxembourgish architecture,  
engineering and urbanism p.179





It is with pleasure that I present to you – **Design first - build smart** – a visual summary of excellence in Luxembourg architectural and engineering design at home and in other countries. The selected works for this publication were chosen either because they demonstrate a Luxembourg architectural project realised in a foreign country or/and were awarded at least one, if not multiple, environmental certifications.

This new book thematically showcases the talent of our growing number of architects within Luxembourg's Order of Architects and Consulting Engineers (OAI), an important pillar of our country. This is a very dynamic and growing sector. In 25 years, the number of architect offices has almost tripled (482 in 2015) and the number of consulting engineer offices has almost quadrupled (193 in 2015). These offices employ more than 4,300 people in Luxembourg. On an economic, social, artistic and cultural level, the OAI's mission is to help people to attain sustainable, smart and high-quality living and working environments.

Luxembourg has for some time recognised the importance of attractive living and working environments where people thrive in communion with their surroundings while adhering as closely as possible to the concept of a circular or no waste economy. For this reason, here at the Ministry of the Economy, we place great value on the architectural engineering and environmental certifications. These awards distinguish the skill and effort expended to successfully achieve the harmonisation of ecological, economic and social interests with the needs of clients, both in Luxembourg and other countries, and the general public who also have a stake in their surroundings.

Architects, consulting engineers and construction companies are now focussing on developing products and materials that are safe for human health and the environment and that can be reused perpetually. They are integrating solar power, eliminating waste, raising energy efficiency and creating buildings that are beautifully modular in look and function, respect local ecosystems and are adaptable to a diverse range of customer desires.

This book celebrates the tangible results of a design philosophy that considers the end of life of everything that goes into a building and potential impacts into the future. I am proud to offer Luxembourg architects and consulting engineers more of the visibility they deserve and the projects described herein these pages should encourage further attractive sustainable building.

I hope you enjoy viewing the exceptional works in “**Design first - build smart**” as much as I have.

**Étienne Schneider**  
Deputy Prime Minister  
Minister of the Economy





## — Design first – build smart, sustainable and inclusive

Luxembourg, with its central position in Europe, always attracted a broad cultural diversity, creating new needs in the development of the built environment. This development acted as a real incubator for the dynamic growth in the building industry over the last decades. Luxembourgish architects, interior architects, consulting engineers, urban designers and master planners and landscape architects / landscape engineers benefitted from the vibrant environment to sharpen their ability to adapt quickly to new circumstances. Their multilingualism and their international experience acquired by studying in diverse countries equally served to build a reputation within the Greater Region that expanded through Europe. Also participating in architectural competitions and symposia proves an entrepreneurial drive can be felt among Luxembourgish architects and consulting engineers.

The essence of Architects' and Consulting Engineers' profession embraces certain quality labels such as guaranteeing independence and ethics, defending public interest and interests of clients and users, integrity, being prepared to carry out principles of circular economy, promoting new tools like BIM and assuming responsibilities within the cradle-to-cradle issues. Luxembourg is therefore an ideal think tank for new ways of living smart technologies and innovative processes and collaborations.

In order to support its members, the "Ordre des Architectes et des Ingénieurs-Conseils" (OAI) actively promotes their produced quality for our environment. Beyond its missions as a legal body, as a professional organisation and as an institution of public interest, the OAI enhances the real dimension of its members' work at an economic, social, artistic and cultural level, to attain a sustainable, smart and high quality living environment.

Collaborations with other national authorities in the private as well as the public sector are part of the strategy to create synergies with the aim of exporting the expertise and the high quality services of our members. Therefore, the focus lies firstly on projects dealing with contextual issues realized worldwide. The second part of the publication shows the know-how from OAI members in certified ecological buildings in Luxembourg. Besides the printed matter, the collected data will also be available online, [www.oai.lu](http://www.oai.lu).

Many thanks to the OAI members who participated in this publication and all persons involved in the process of this project.

Stay curious while discovering this book.

**Pierre Hurt**  
CEO OAI





# — Ordre des Architectes et des Ingénieurs-Conseils Grand-Duché du Luxembourg

\* UIA = Union Internationale des Architectes , ACE = Architects' Council of Europe, FIDIC = International Federation of Consulting Engineers , EFCA = European Federation of Engineering Consultancy Associations

The Order of Architects and Consulting Engineers official mission, established by Luxembourgish law, is to guarantee the application of the rights and duties linked to public interest covered by the

## **5 OAI PROFESSIONS:**

- **ARCHITECTS**
- **INTERIOR ARCHITECTS**
- **CONSULTING ENGINEERS**
- **URBAN DESIGNERS AND MASTER PLANNERS**
- **LANDSCAPE ARCHITECTS / LANDSCAPE ENGINEERS.**

It is compulsory for each of these professionals, whether a natural or legal person, who wants to exercise his profession on an independent basis in the Grand-Duchy of Luxembourg, to be registered with this organisation.

## **3 MISSIONS : LEGAL, PROFESSIONAL, CULTURAL.**

Beyond its missions as a legal body, as a professional organisation and as an institution of public interest, the OAI enhances the real dimension of its members' work at an economic, social, artistic and cultural level, to attain a sustainable, smart and high quality living environment.

The OAI is affiliated with numerous international organisations: UIA, ACE, FIDIC, EFCA,...\*.

## **SERVICES OF OAI MEMBERS: «DESIGN FIRST, BUILD SMART»**

Professional, independent, integrated and detailed design is the best way to guarantee added value to building.

Construction must avoid becoming just an ordinary industrial and commercial process. It is of tremendous importance to establish with the client the right standards of quality from the beginning of each project.

OAI members provide creative, functional and economic planning, coordination and supervision of building projects.



© WWA



© SCHROEDER & ASSOCIATES / PACZOWSKI ET FRITSCH



© H&A HESBROURG STROTT ARCHITECTES



© STERNWETZDMEYER



© AREND+THILL



© INCA



© SCHEMEL WITZ ARCHITECTES ASSOCIES / CORBIET JAVANIER



© DALINPITT



© RIV CONSULT



© TEAM 31

Having a close relationship with the client enables OAI members to customise the construction to his specific needs. They develop the project within the available budget and they are ready to follow the “Life Cycle Cost” and circular economy principles.

OAI members work in a stage by stage process: feasibility studies and design of the project, legal requirements, call for tenders and analysis of contractors’ and craftsmen’s quotations, control of the building site and deadlines, as well as control of the quality of execution, assistance to work acceptance.

## ADDED VALUE OFFERED BY SERVICES OF OAI MEMBERS

It is rare to gather the 5 OAI professions in one single professional body. This facilitates managing and integrating task force teams thus satisfying the client’s needs with accuracy and to the highest standards.

Luxembourg is situated in the heart of Europe and at the crossroad of multilingual cultures. This has a positive influence on creativity, technical know-how and on innovation through interregional and international exchanges. The formation of polyglot and multicultural teams is thus promoted. These influences result in a construction identity specific to the country.

This situation is enhanced by the fact that on one hand office’s staff attended university mainly abroad, which increased their ability to adapt to foreign markets, and on the other hand, international clients have, more and more, developed ambitious projects locally.

## MEMBERSHIP OAI = QUALITY LABEL

The essence of the 5 OAI professions is such as follows:

- qualification, competence, expertise, creativity and inventiveness,
- guaranteeing independence and ethics,
- assuming professional responsibilities,
- the obligation of taking insurance policies that cover these risks,
- avoiding conflicts of interest by renouncing to any commercial activity,
- defending public interest and interests of clients and users.

## DOCUMENTATION ON OAI MEMBERS

- [www.oai.lu](http://www.oai.lu) in the following menus
  - « annuaire des membres » : Directory of members
  - « accueil » => « publications grand public »
  - « accueil » => « expositions » : wide variety of projects
  - « bauhärepräis » : Clients Award
  - Biannual publication « Guides Références »
- [www.architectour.lu](http://www.architectour.lu)

Illustrations from the Guide OAI Références 2016, where you can find the authors of these projects

cf. [www.oai.lu](http://www.oai.lu) in the menu “accueil” => “publications grand public”

### REGISTERED OBLIGATORY MEMBERS (12/2016)

<b>ARCHITECTS OFFICES</b>	<b>609</b>
- head office in Luxembourg	479
- head office abroad	130
<b>INTERIOR ARCHITECTS OFFICES</b>	<b>33</b>
- head office in Luxembourg	33
<b>CONSULTING ENGINEERS OFFICES</b>	<b>231</b>
- head office in Luxembourg	184
- head office abroad	47
<b>URBAN DESIGNERS AND MASTER PLANNERS / OFFICES</b>	<b>160</b>
<b>LANDSCAPE ARCHITECTS / ENGINEERS OFFICES</b>	<b>9</b>
<b>MANPOWER</b>	<b>5131</b>
- head office in Luxembourg	

**OAI**

ORDRE DES ARCHITECTES  
ET DES INGÉNIEURS-CONSEILS





— 62 projects  
abroad



# Overview

## Europe

- > **Austria**
  - Salzburg p.14
- > **Belgium**
  - Bierbeek p.16
  - Brussels p.18-27
  - Brussels Port p.28
  - Dilbeek p.30
  - Francorchamps p.32
  - Halinne p.34
  - Louvain-la-Neuve p.36
  - Tournai p.38
- > **Czech Republic**
  - Prague p.40
- > **France**
  - Basse-Ham p.42
  - Beauvais p.44
  - Buding p.46
  - Corsica p.48
  - Evry p.50
  - Fameck p.52
  - Hagen p.54
  - Mont St Michel p.56
  - Paris p.58
  - Rohrbach-Alsace p.60
  - Terville p.62
  - Thionville p.64-69
  - Vannes p.70
- > **Germany**
  - Bad-Honnef p.72
  - Berlin p.74
  - Bitburg p.76
  - Cologne p.78
  - Dessau-Ziebig p.80
  - Frankfurt am Main p.82
  - Igel-Liersberg p.84
  - Kaiserlautern p.86
  - Mannebach p.88
  - Osnabrück p.90
  - Perl-Nennig p.92
  - Prüm p.94
  - Saarbrücken p.96
  - Saarlouis p.98
  - Trier p.100-105
  - Weinsheim p.106
- > **Kosovo**
  - Ferizaj/Prizren p.108
- > **Poland**
  - Warsaw p.110
- > **Spain**
  - Salamanca p.112

## Asia

- > **China**
  - Shanghai p.114
- > **Saudi Arabia**
  - Riyadh p.116

## Africa

- > **Algeria**
  - Algiers p.118
  - Algiers/Moretti p.120
- > **Benin**
  - Cotonou p.122
- > **Burkina Faso**
  - Pabré p.124
  - Sakoinse-Boromo p.126
- > **Cape Verde**
  - Praia p.128
- > **Gabon**
  - Libreville p.130
- > **Ivory Coast**
  - Abidjan p.132
- > **Republic of Congo**
  - Brazzaville p.134

## America

- > **Brazil**
  - Trancoso p.136



# AUSTRIA

Salzburg  
2011

## House for Mozart

While connecting the theatre directly to the “Felsenreitschule”, this project maintains the original road-side facade. The new facade is characterised by a sober design and an open access to patio areas. Furthermore, three bronze doorways by the artist Josef Zenzmaier and five bay windows define the composition. The entrances represent large openings, with the original entrance maintained and renovated. The foyer is the signature feature, linking the “Felsenreitschule” with the fully refurbished “Faistauer-Foyer”. Swarovski-stone embellished decorations enhance the main staircase, adding a festive note.

### CONCEIVED BY

VALENTINY HVP ARCHITECTS SARL  
office@hvp.lu  
www.valentinyarchitects.com  
T. +352 23 60 70 1

### CLIENT

HAUS FÜR MOZART – KLEINES  
FESTSPIELHAUS UMBAU- UND  
VERWALTUNGS GMBH









# BELGIUM

Bierbeek

2011

## Psychiatric Hospital

This hospital features architectural traits that represent fragility, fragmentation, and a search for orientation, thus reflecting the needs and problems faced by patients and their loved ones. The architecture gives a sense of security, safety and light. The rooms are suited to their functions, facilitating supervision and control. The design responds to questions about the need for seclusion and control in such an institution, but this restriction does not prevent the building from having open patio areas on the ground floor.

### COST

10 190 000 EUR (buildings without the parc)

### ARCHITECTURAL COMPETITION

2<sup>nd</sup> prize

### CONCEIVED BY

STUDIO SNCDA SARL  
sara@sncda.eu  
www.sncda.eu  
T. +352 34 04 61

THEVEN  
architect  
www.theven.eu

VERONIQUE PATTEEUW  
architect  
www.oasejournal.nl/www.a16.be

ATELIER DALTA ET VELDWERK  
landscape architects / landscape engineers

BOLLINGER+GROHMANN SARL  
consulting structural engineer  
www.bollinger-grohmann.fr

KLIMAENGINEERINGTRANSOLAR GMBH  
consulting engineer in other disciplines  
www.transsolar.com

### CLIENT

PROVINCIALATE OF THE BROTHERS OF CHARITY NON-PROFIT ORGANISATION







# BELGIUM

Brussels

2015

## Realex Tower

This project follows objectives established by the authorities and respects the strategic plan for the European district. The office was built along Rue de la Loi, retail outlets are near the living areas and are located on the ground floors, thus connecting the road to Rue Lalaing. The passage is a green area which visually extends to Rue de Toulouse. The mixture of low, middle and high level construction facilitates daylight penetration to the streets and smaller units.

### CERTIFICATIONS

BREEAM Excellent  
PASSIVE BUILDING (PHPP)

### CONCEIVED BY

ASSAR ARCHITECTS SARL  
pca@assar.com  
www.assar.com  
T. +352 44 13 67 1

GREISCH S.A.  
consulting structural engineers  
www.greisch.com

FELGEN ENGINEERING SPRL  
consulting building technologies  
engineers

### CLIENT

LEASELEX SPRL







## BELGIUM

Brussels

2011

ECAM

The Institut Supérieur Industriel ECAM Industrial engineering School building is the perfect example of how can architectural form follow function. There is harmony between the form and shape, demonstrating a great deal of technical prowess. Its purpose is determined by the way the architects created relationships between internal and external spaces. The elements chosen for the facade are linked to the building's use. The structure is devoid of heavy and extravagant finishing touches and techniques, and this helps illustrate its intrinsic beauty, with the goal of familiarising industrial engineering students with the subject's potential.

### COST

9 300 000 EUR

### CONCEIVED BY

KHOZE ARCHITECTURE SARL  
gabriel.mambu@khoze.lu  
www.khoze.lu  
T. +352 26 29 62 49

MODULO ARCHITECTS S.P.R.L.  
architect  
www.modulo-architects.be

### CLIENT

HAUTE ECOLE LEONARD  
DE VINCI ASBL







# BELGIUM

Brussels

2015

TREURENBERG

This office building has been certified for zero energy and BREEAM excellence. It is structured around an atrium which opens at ground floor level via a patio which gives onto the enclosure. Interior space on the fifth floor overhangs the historical centre of Brussels, while opening onto an external terrace.

## CERTIFICATION

BREEAM Excellent  
Passive building NZE (Net Zero Energy)

## COST

17 450 000 EUR

## ARCHITECTURAL COMPETITION

1<sup>st</sup> prize, private competition by invitation only

Winner of a MIPIM AWARD in the "Best Innovative Green Building" category, 2016

## CONCEIVED BY

ASSAR ARCHITECTS SARL  
pca@assar.com  
www.assar.com  
T. +352 44 13 67 1

SETESCO  
consulting structural engineers  
www.setesco.be

VK ENGINEERING  
consulting building technologies engineers  
www.vkgroup.be

## CLIENT

AXA BELGIUM S.A.









# BELGIUM

Brussels

2011

Louise 120

Revitalising an eight-storey administrative building from the 1960s was carried out using passive standards. This was one of the first such constructions in the Belgian capital, and it also holds BREEAM certification. Its facade features progressive plain elements and glass surfaces from top to bottom, evoking movement and hierarchy, as well as alluding to the more classic design of neighbouring facades. Tinted mirrors reflect the external environment, and it merges with the interior design, thus capturing the attention of passers-by.

## CERTIFICATION

PASSIVHAUS BREEM VERY GOOD

## CONCEIVED BY

MORENO ARCHITECTURE &  
ASSOCIES SARL  
moreno@moreno.lu  
www.moreno.lu  
T. +352 26 48 27 75

A2M  
architect

## CLIENT

GILTS INVESTMENTS S.A.







# BELGIUM

Brussels

2009

## SOLARIS

Diverse interior design facilitates occupational flexibility. Natural light is omnipresent thanks to two facades with large glassed atria on three levels. The project promotes sustainable development through geothermal science, photovoltaic cells, reinforced insulation, solar protection, rain water recovery, natural cooling, and solar water heating. This makes the building an iconic example of sustainable construction.

### CERTIFICATIONS

Valideo 78/100  
BREEAM Certification in USE:  
Part 1 (Asset): Excellent / Part 2  
(Building Management): Very Good

### COST

21 064 475 EUR

### ARCHITECTURAL COMPETITION

2009 BELGIAN ENVIRONMENT &  
ENERGY AWARD  
Winner of an award in  
the "Eco-Building Award" category.

2010 MIPIM AWARD  
Winner of an award in  
the "Green Building" category.

### CONCEIVED BY

ASSAR ARCHITECTS SARL  
pca@assar.com  
www.assar.com  
T. +352 44 13 67 1

Ass. SOLIPROM - NEY & Partners  
Structural & civil engineering  
www.ney.be

3E  
Energy efficiency & renewable energy  
consultants  
www.3e.eu

### CLIENT

HIPPOGONE  
(MEMBER OF HERPAIN-URBIS)







# BELGIUM

Brussels Port  
2006

## Nautical base

The work on the Brussels Port Boating Centre required the rebuilding and integration in the marina of the sailing school, the harbour master's home, and the sea scouts' and marine cadets' centre. Set on piles in Brussels canal, it has three levels with large cantilevered terraces over the navigable water.

## COST

1 583 000 EUR

## CONCEIVED BY

BENG ARCHITECTES ASSOCIES SA  
info@beng.lu  
www.beng.lu  
T. +352 54 94 30

R2D2  
architect

## CLIENT

BRUSSELS PORT







# BELGIUM

Dilbeek  
2011

Fire station, a multipurpose hall and town houses

This urban project unites three functions: a fire station, a multipurpose hall and houses. Combined on one single plot, the project draws a distinction between public and private areas, with each program oriented towards a dedicated square. Firefighters have direct access to their garage from both sides of the terrain, while the multipurpose room has a separate access. The dwellings are oriented around a large public garden. The façade is developed in collaboration with artist and graphic designer Karel Martens.

## COST

7 000 000 EUR

## ARCHITECTURAL COMPETITION

Winner

## CONCEIVED BY

STUDIO SNCDA SARL  
sara@sncda.eu  
www.sncda.eu  
T. +352 621 79 64 62

VÉRONIQUE PATTEUW  
architect  
www.oasejournal.nl/www.a16.be

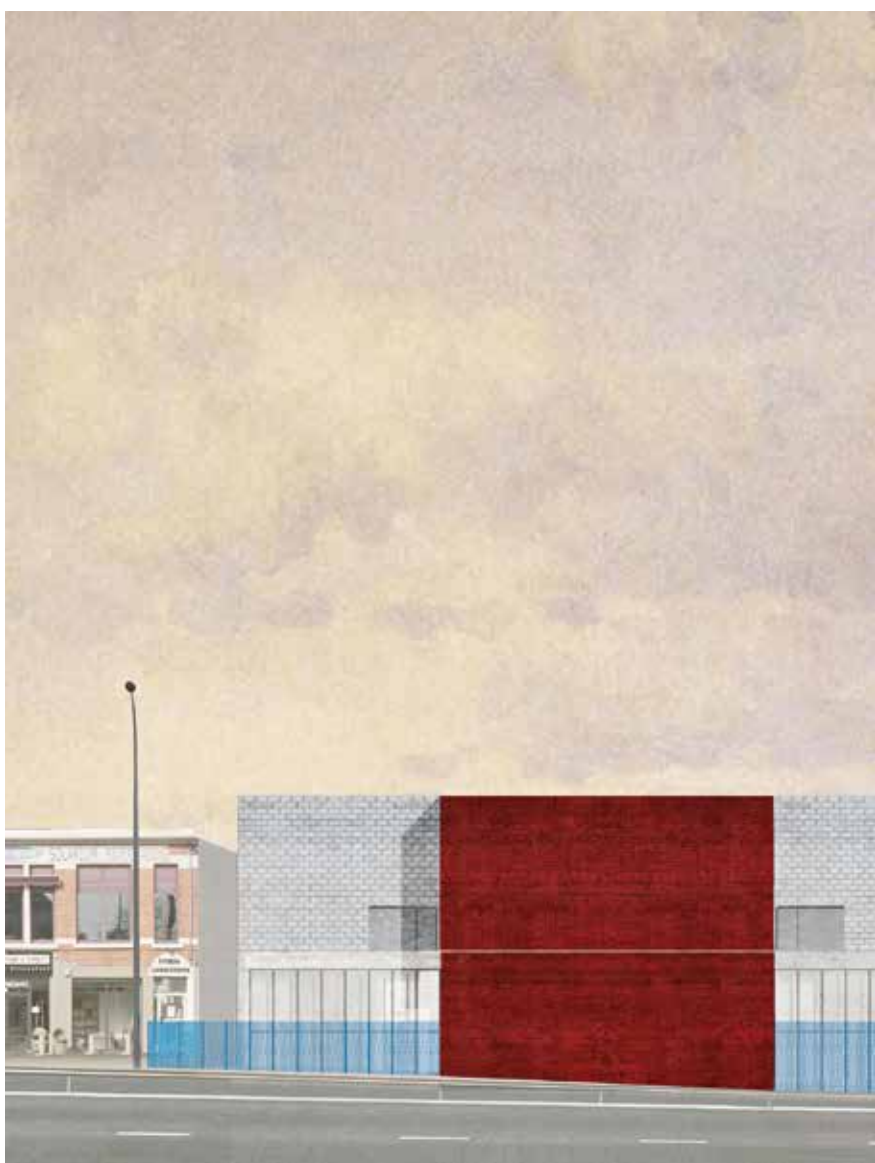
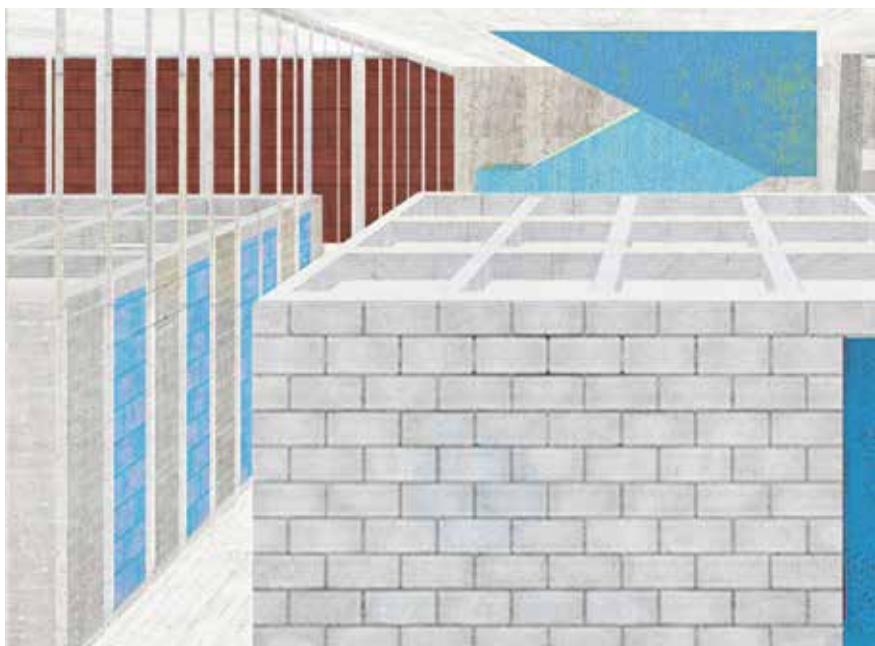
BOLLINGER+GROHMANN SARL  
consulting structural engineer  
www.bollinger-grohmann.fr

STUDIEBUREAU BOYDENS  
consulting building technologies engineer

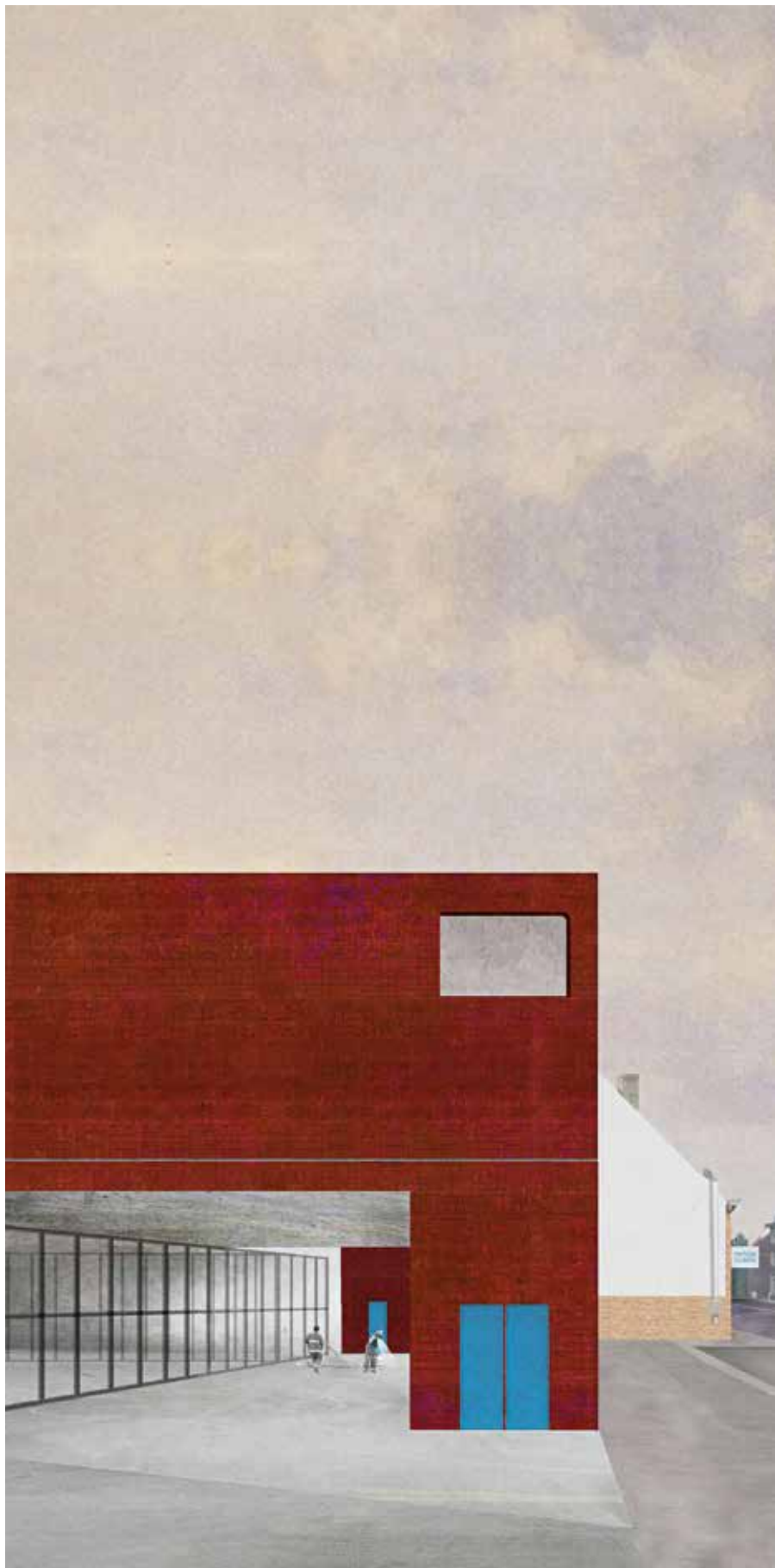
KLIMAENGINEERINGTRANSSOLAR GMBH  
consulting engineer in other disciplines  
www.transsolar.com

## CLIENT

MUNICIPALITY OF DILBEEK







## BELGIUM

Francorchamps  
2011

Hotel de la Source

This four star hotel has 86 rooms and 4 suites, a restaurant, a spa, and eight conference rooms. It blends perfectly with its surroundings in the Ardennes hills, with three buildings created in a traditional Moselle style brought together by glazed areas. Gables in natural stone and the wooden facade highlight the deeply-rooted local character of the building. The interaction between windows, terrace and loggia reflects contemporary design themes.

### — CONCEIVED BY

MORENO ARCHITECTURE &  
ASSOCIES SARL  
moreno@moreno.lu  
www.moreno.lu  
T. +352 26 48 27 75

ARCHITECTES, URBANISTES SCHEMEL,  
WIRTZ & ASSOCIES SC  
architect  
www.schemelwirtz.lu

AUPA SPRL  
architect

### — CLIENT

HOTEL DE LA SOURCE







## BELGIUM

Haltinne

2011

The “Grand Potager de Haltinne”

Restoring the “Grand Potager de Haltinne” farmer’s house also features a new building for the organic market garden. The farmer’s house is partly built using the foundations of an historic wall that divides the vegetable garden and the pond. A lean-to on the garden side limits traffic and access from the outside. To the south-west, large vertical windows open up to a pond. Central heating is provided by a woodchip boiler that uses green waste from the site.

### CONCEIVED BY

MORENO ARCHITECTURE &  
ASSOCIES SARL

moreno@moreno.lu

www.moreno.lu

T. +352 26 48 27 75

MADE ARCHITECTURE SARL

contact@made.lu

www.made.lu

### CLIENT

NEW BELLAIRE SPRL









## BELGIUM

Louvain-la-Neuve

2009

Hergé Museum in Belgium

The Hergé Museum hosts the works of the creator of the Tintin books, with permanent and temporary collections hosted in a total area of 3,600 m<sup>2</sup>. The content of the permanent collections is based on themes including "A man of art", "The worlds of Tintin" and "A classic of the twentieth century." The museum also features a bookshop, a cafeteria, a ticketing service, lockers, and technical rooms.

### COST

15 000 000 EUR

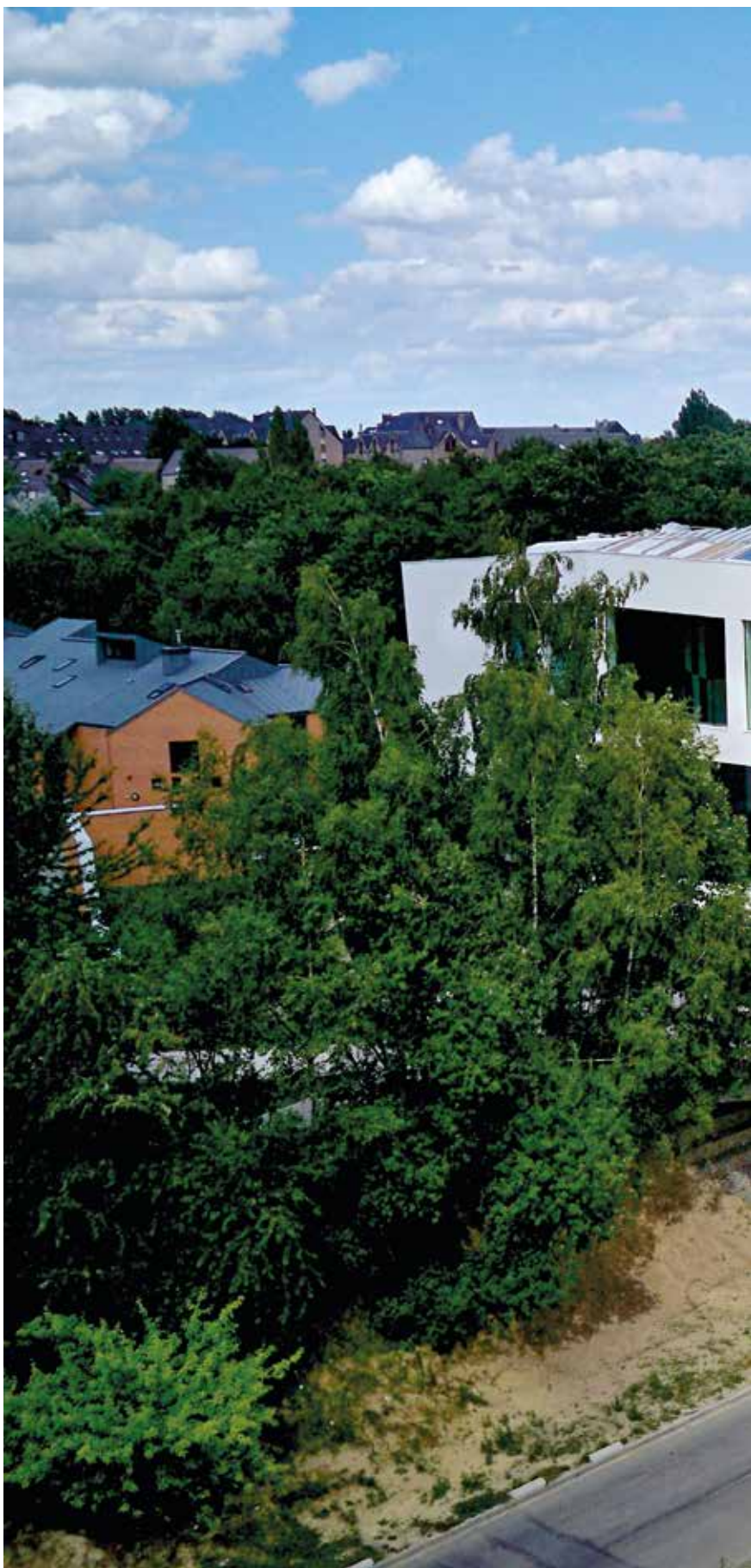
### CONCEIVED BY

ATELIER CHRISTIAN DE PORTZAMPARC  
architect  
[www.portzamparc.com](http://www.portzamparc.com)

INCA, INGENIEURS CONSEILS  
ASSOCIES SARL  
[info@inca-ing.lu](mailto:info@inca-ing.lu)  
[www.inca-ing.lu](http://www.inca-ing.lu)  
T. +352 42 68 90 1

### CLIENT

LA CROIX DE L'AIGLE







# BELGIUM

2016

## TOURNAI

Designing a new nursing home for 130 residents faced two major challenges: the need for compliance with passive/zero-energy standards, and connecting living areas with public spaces. These twin desires were addressed with a simple, compact form surrounded by a continuous ring of bedrooms on the two upper floors.

### CERTIFICATION

Objective: Passive certification

### COST

14 750 000 EUR

### CONCEIVED BY

ASSAR ARCHITECTS SARL

[pca@assar.com](mailto:pca@assar.com)

[www.assar.com](http://www.assar.com)

T. +352 44 13 67 1

3E  
energy efficiency & renewable energy  
consultants

MK ENGINEERING  
consulting building technologies  
engineers  
[www.mkengineering.be](http://www.mkengineering.be)

NEY & PARTNERS  
consulting structural engineers  
[www.ney.be](http://www.ney.be)

JNC INTERNATIONAL S.A.  
landscape architect / landscape  
engineers  
[www.jnc.be](http://www.jnc.be)

### CLIENT

CPAS TOURNAI









## CZECH REPUBLIC

Prague

1997–1998

Restaurant « Magic Vision »

After years of useless vacancy the Czech authorities gave permission to the realisation of a thematic museum linked to life and work of Franz KAFKA and a restaurant in the secularized church of St. Michael in Prague.

The restaurant, realised in the rebuilt roofstructure of the former church, houses 137 places in three thematic zones. A bar and a show-kitchen complement the offer for a large public.

### COST

450 000 EUR

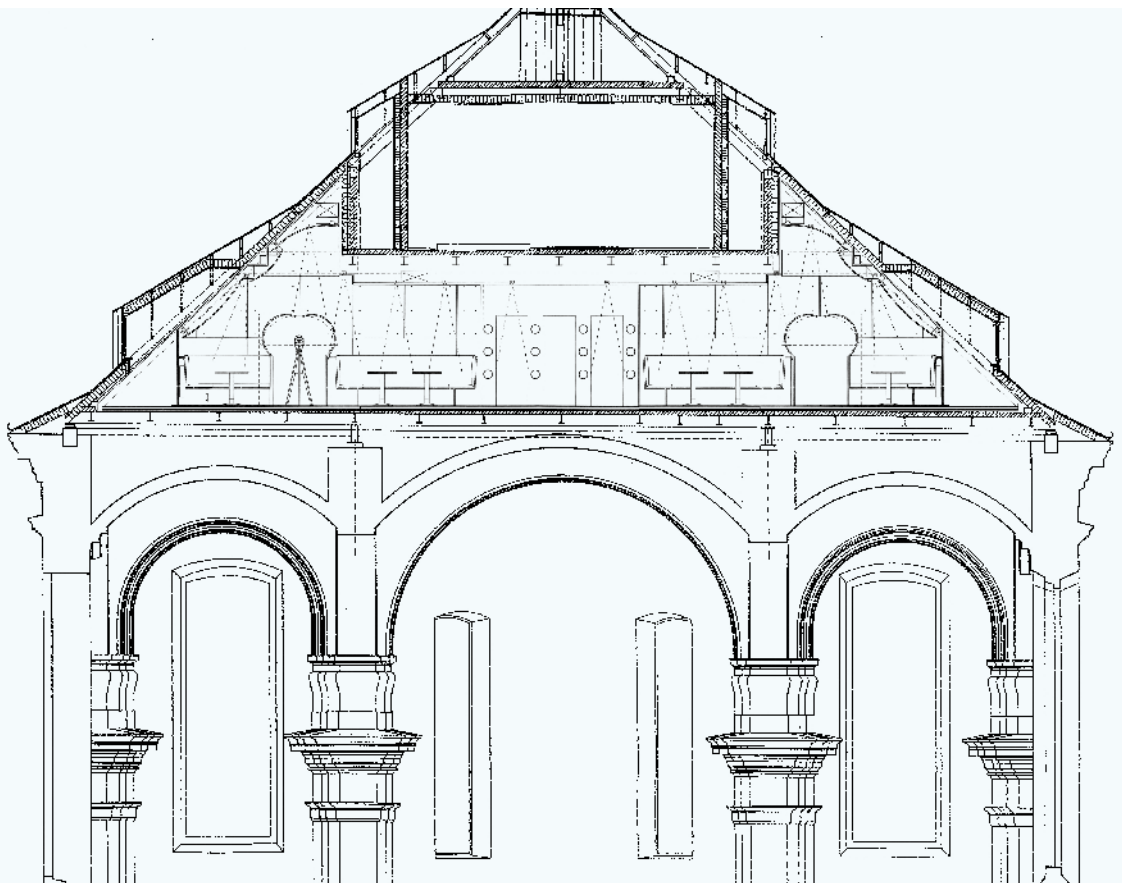
### CONCEIVED BY

PLANET+, ARCHITECTES & URBANISTES  
mail@planetplus.lu  
www.planetplus.lu  
T. +352 44 23 08 1

### CLIENT

JURIMEX GMBH







# FRANCE

Basse-Ham

2013 - 2014

Nautical building

This nautical centre is on the banks of the Moselle River, at the entrance of the sailing harbour. Shaped to remind us of a lighthouse, the translucent roof/depot lights up at night. The effect emphasises the structure's lightness. One side is rich in wooden features and hosts the club house, a classroom, and heated changing rooms. In the other wing there is the boat hanger made from wood and metal. As the nautical centre lies in a zone liable to flooding its concrete base is set on stilts.

## COST

1 510 150 EUR

## CONCEIVED BY

BENG ARCHITECTES ASSOCIES SA  
info@beng.lu  
www.beng.lu  
T. +352 54 94 30

## CLIENT

MUNICIPALITY OF BASSE-HAM







# FRANCE

Beauvais

2013

Pont de Paris in Beauvais, France

This rebuild of the Pont de Paris in Beauvais city centre features an orthotropic deck on two main box-girders with a variable section containing four bays. It is 120 m in length. The decision to choose steel rather than concrete for the entirety of the bridge enabled the old piers to be maintained. It also future-proofed the structure against possible increases in traffic load.

## COST

6 100 000 EUR

## CONCEIVED BY

INCA, INGENIEURS CONSEILS  
ASSOCIES SARL  
info@inca-ing.lu  
andrea.decillia@inca-ing.lu  
www.inca-ing.lu  
T. +352 42 68 90 1

ATELIERS ROGER ONCIN  
consulting engineer in other disciplines

## CLIENT

CITY OF BEAUVAIS







# FRANCE

Buding

2011 – 2016

## Pre-school

The buildings of this new pre- and primary school in the village of Buding are connected by a canopy that also constitutes a covered playground for children. The layout and the covered space frame a splendid view onto the countryside. The three classrooms have a total capacity of up to 65 children, which also contain sanitary facilities, changing rooms, and a kitchen with storage facilities.

### COST

630 738 EUR

### CONCEIVED BY

BENG ARCHITECTES ASSOCIES SA  
info@beng.lu  
www.beng.lu  
T. +352 54 94 30

NOURY ET ASSOCIÉS  
architect

### CLIENT

MUNICIPALITY OF BUDING









# FRANCE

Corsica

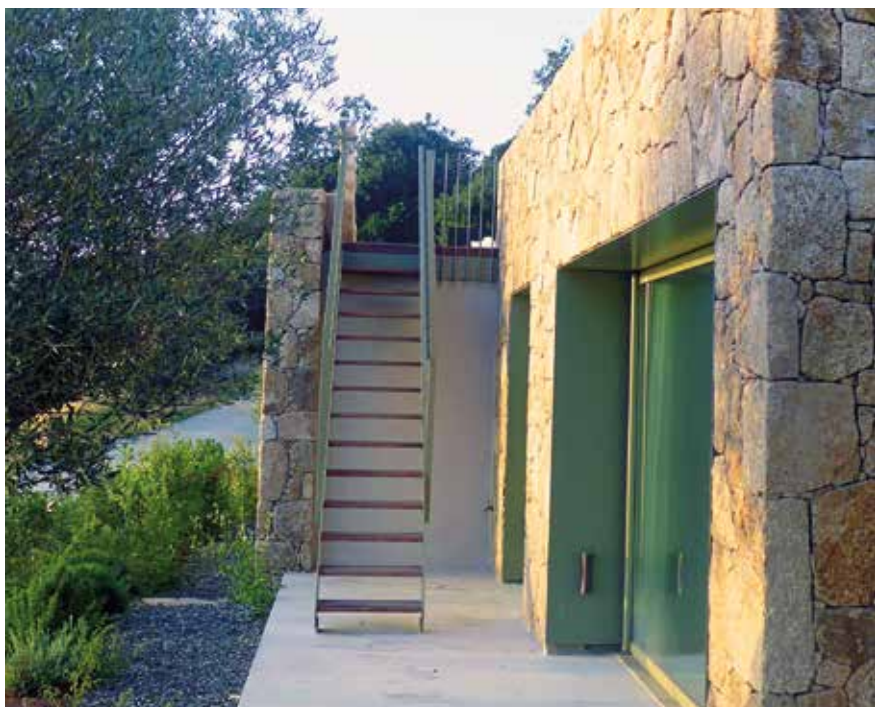
2011

Luxury villa in Corsica

This villa makes a clear distinction on each floor between independently-functioning private and public areas. The concept also incorporates the furniture, kitchen equipment, sanitary facilities and lighting, all combining to maximise functionality. Particular attention was given to the transition between interiors and the green exterior space.

## CONCEIVED BY

MORENO ARCHITECTURE &  
ASSOCIES SARL  
moreno@moreno.lu  
www.moreno.lu  
T. +352 26 48 27 75









## FRANCE

Evry  
2006–2007

Walkway “Quai aux fleurs”

This building's foundation is a harness of round steel tubes that highlight the rotation of the 62 m walkway.

### — ARCHITECTURAL COMPETITION

Winner at an architectural competition  
construction steel 2007 (Cat. E)

### — COST

800 000 EUR

### — CONCEIVED BY

DVVD  
architect

SCHROEDER & ASSOCIES SA  
contact@schroeder.lu  
www.schroeder.lu  
T. +352 44 31 31 1

### — CLIENT

AFTRP (PARIS REGION LAND  
MANAGEMENT AND DEVELOPMENT  
AGENCY)









# FRANCE

Fameck

2011-2012

Individual house

Situated in a suburban area, this house was built on a slope, thus avoiding the need to move earth unnecessarily. The building has been certified low-energy and meets all insulation requirements thanks to its construction using passive techniques. The structure uses wood, and avoids mechanical bindings. The walls allow air to circulate as vapour barrier films are avoided. The facade is mostly closed on the ground-floor side, with large south-facing windows on the garden side.

## CERTIFICATION

BBC EFFINERGIE

## COST

340 000 EUR

## CONCEIVED BY

ATELIER D'ARCHITECTURE  
DU CENTRE SARL  
mail@aadc.lu  
www.aadc.lu  
T. +352 26 32 15 12

ICB INGENIEURS-CONSEILS  
EN BATIMENTS SARL  
consulting structural engineer  
www.icb.lu

## CLIENT

MR. & MRS. MARC DEUTSCH







## FRANCE

Hagen

2008 – 2010

Single-family home

This modern house blends perfectly with its village environment in Lorraine, a French region close to the Luxembourg border. The garden is the central feature, with large bay windows blurring the distinction between interior and exterior life. Dominated by white, the interior design is characterised by the use of concrete, either poured directly on site (for flooring) or prefabricated (for the staircase and walkway). A slightly cantilevered structure on the first floor highlights the master bedroom.

### COST

402 400 EUR

### CONCEIVED BY

BENG ARCHITECTES ASSOCIES SA

info@beng.lu

www.beng.lu

T. +352 54 94 30

NOURY ET ASSOCIÉS  
architect







# FRANCE

Mont Saint-Michel

2011

Couesnon dam - Balcony Sea

This metallic platform sits on the piers of the Couesnon dam, and serves as a panoramic maritime terrace enabling visitors to admire Mont Saint-Michel. The generous use of wood shows the importance of integrating this structure into the natural environment.

## COST

2 000 000 EUR

## CONCEIVED BY

LUC WEIZMANN ARCHITECTE  
architect

SCHROEDER & ASSOCIES SA  
contact@schroeder.lu  
www.schroeder.lu  
T. +352 44 31 31 1

## CLIENT

SYNDICAT MIXTE BAIE DU MONT-  
SAINT-MICHEL









# FRANCE

Paris

2011

## Place de la République

The refurbishment of the Place de la République in Paris was driven by the desire to create an extended pedestrian zone with direct access to the square. Now Parisians can enjoy this multi-purpose, car-free area with its mineral soil base that can be put to many uses, including a large green field right in the city centre. Meeting these objectives required the reorganisation of traffic and pedestrian flows, the creation of new use-hierarchies, while maintaining the focus on the many ways this public space will be used. Fountains, green areas, and references to the urban past are highlighted to underscore the square's identity and usefulness.

### ARCHITECTURAL COMPETITION

1<sup>st</sup> prize

### COST

12 000 000 EUR

### CONCEIVED BY

TVK ARCHITECTES URBANISTES  
architect  
[www.tvk.fr](http://www.tvk.fr)

HUTH FRIEDRIKE  
[fhuth@areal.lu](mailto:fhuth@areal.lu)  
[www.areal.lu](http://www.areal.lu)  
T. +352 26 94 56 36

### CLIENT

CITY OF PARIS









# FRANCE

Rohrbach-Alsace

2013

Viaduct of Rohrbach, France

As part of the second phase of the East European high speed train, the Rohrbach viaduct is located near Duntzenheim in Alsace, France and crosses the main road D25 and the Rohrbach valley. With its five spans, a total length of 169 m and a metal structure weighing 610 tons, the viaduct is a composite two-girder bridge and incorporates two tracks with its deck height reaching 12.46 m.

## COST

7 000 000 EUR

## CONCEIVED BY

INCA, INGENIEURS CONSEILS  
ASSOCIES SARL  
andrea.decillia@inca-ing.lu  
www.inca-ing.lu  
T. +352 42 68 90 1

ATELIER PONCIN  
consulting engineer in other disciplines

## CLIENT

FRENCH RAILWAY NETWORK







## FRANCE

Terville  
2015

Le 112

The complete renovation of the multipurpose centre featured raising the height of the roof, thus highlighting the theatre within its environment while increasing interior space.

**COST**

1 446 142 EUR

**CONCEIVED BY**

BENG ARCHITECTES ASSOCIES SA  
info@beng.lu  
www.beng.lu  
T. +352 54 94 30

NOURY ET ASSOCIES  
architect

**CLIENT**

MUNICIPALITY OF TERVILLE







# FRANCE

Thionville

2010 – 2012

## Theatre

The renovation work of the Thionville theatre was the subject to an architecture contest in 2003. Inaugurated in 1960, the dressing rooms, the entrance area and the theatre area itself needed renovation and adapting to modern standards. The work ran from 2010 to 2012, with a result that the theatre can now stage bigger, more complex shows on a larger stage in front of more than 1,000 spectators. Furthermore, the architectural acoustics consultancy Xu-Acoustique helped ensure high sound quality.

### COST

5 727 158 EUR

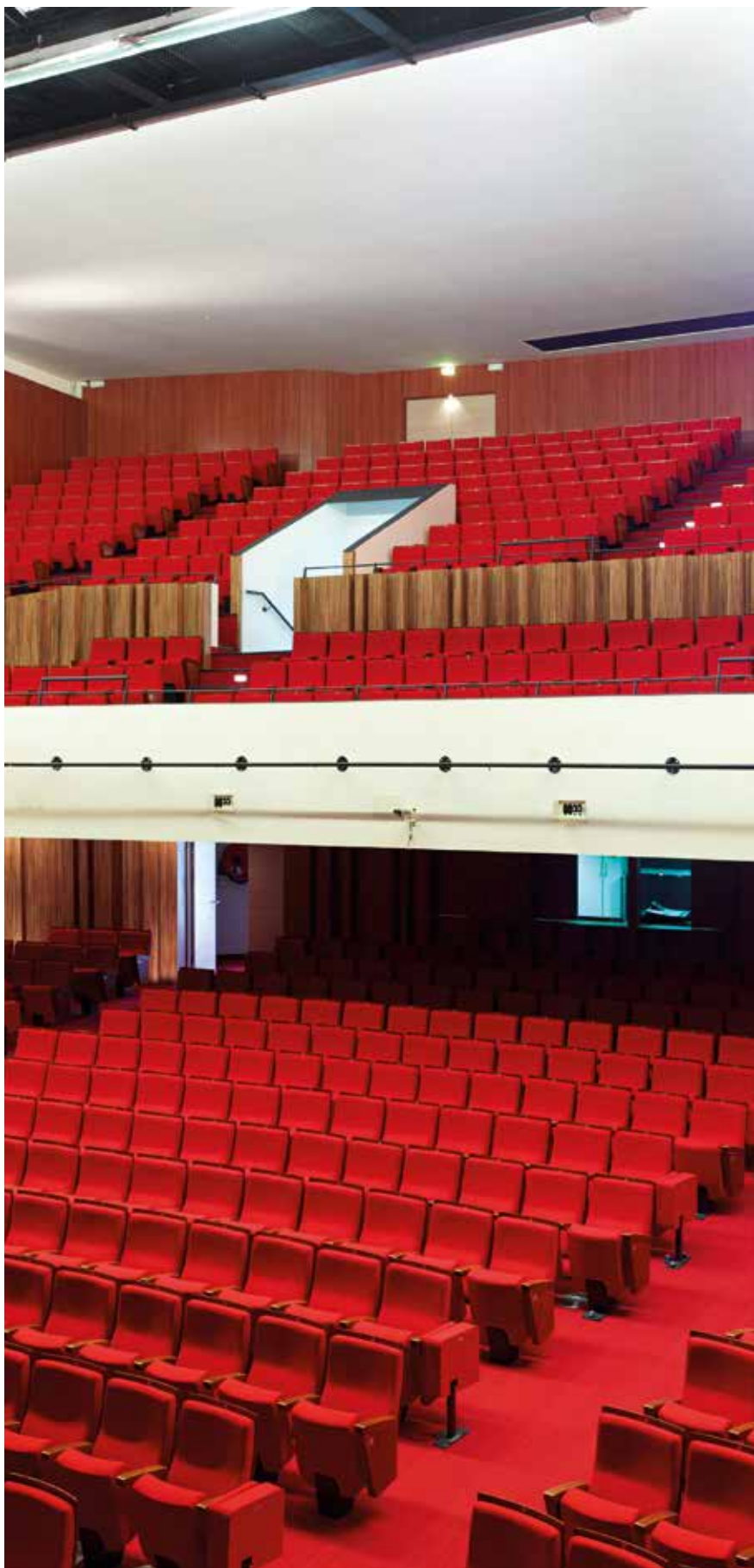
### CONCEIVED BY

BENG ARCHITECTES ASSOCIES SA  
info@beng.lu  
www.beng.lu  
T. +352 54 94 30

NOURY ET ASSOCIÉS  
architect

### CLIENT

MUNICIPALITY OF THIONVILLE







# FRANCE

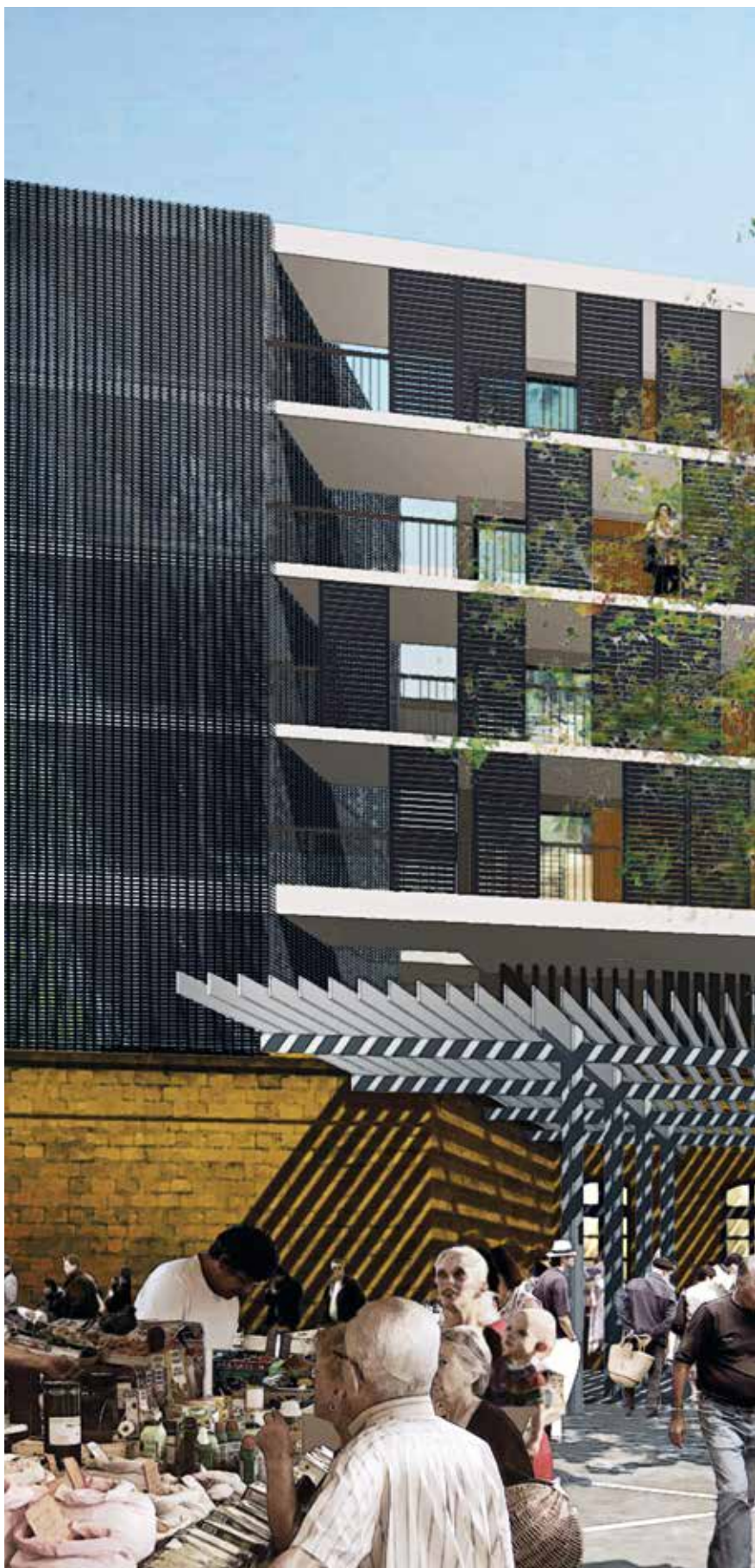
Thionville Cedex  
2011

Griesberg barracks, Thionville

The renovation of the Griesberg barracks has enabled a new central site to emerge close to the theatre in Thionville, France. This has rendered the city more attractive. After removing its blast-proof exterior, the barracks can now offer a range of services and shops on the ground floor, with housing upstairs. The car park shelter separates the barracks from the overlooking apartments.

— CONCEIVED BY  
FABECK ARCHITECTES SARL  
architectes@fabeck.lu  
www.fabeck.lu  
T. +352 26 30 80 1

— CLIENT  
MUNICIPALITY OF THIONVILLE









## FRANCE

Thionville

2005 – 2006

Community centre

The local town council of Thionville wanted several alterations made to its multipurpose hall. It wanted to renew this facility to encourage community activity and interaction. The renovated building now gives onto the park, and its multipurpose hall faces outwards, with the beauty of the metallic construction frame a prominent, attractive feature.

### COST

739 135 EUR

### CONCEIVED BY

BENG ARCHITECTES ASSOCIES SA  
info@beng.lu  
www.beng.lu  
T. +352 54 94 30

NOURY ET ASSOCIÉS  
architect

### CLIENT

MUNICIPALITY OF THIONVILLE









## FRANCE

Vannes

2009 – 2010

Occupational health building

The Morbihan occupational medicine building is a one-floor project featuring offices, medical rooms, a conference room, and a public reception area. It has intimate patio areas linked to pleasant waiting spaces. The building has a private and well-ventilated parking area, and it blends perfectly into a managed rural environment.

**COST**

2 777 733 EUR

**CONCEIVED BY**

BENG ARCHITECTES ASSOCIES SA  
info@beng.lu  
www.beng.lu  
T. +352 54 94 30

NOURY ET ASSOCIÉS  
architect

**CLIENT**

AMIEM







## GERMANY

Bad-Honnef

2011

Rackey Gallery

This building appears like a sculpture hovering over the Bonn-Cologne industrial zone. Visible to motorists, the building's oval and sickle-shaped design, highlighted by a glass section, is imposing. The concrete-looking facade gives the building a corporate appearance. Opposite, the garden predominates. The walls determine the outline of the building, and the showroom is in the brutalist style, and is free of decoration. Light stacks pierce the roof to reinforce the building's surprising character, giving a striking appearance at night.

### — CONCEIVED BY

VALENTINY HVP ARCHITECTS SARL  
office@hvp.lu  
www.valentinyarchitects.com  
T. +352 23 60 70 1

### — CLIENT

RACKEY FAMILY







# GERMANY

Berlin

2014 – 2017

Visitor Centre “Gärten der Welt”, Berlin

It was a challenge to create a visitor centre featuring a varied food court and event area, with a garden city bordering a landscaped zone. The concept features a compact construction which reduces the amount of built surface in favour of the green setting, achieving harmonious integration into the natural environment. The building stands in strong opposition to the Blumberger Damm, but also provides a link to the Gardens of the World leisure park. The green inner courtyard and the vast open forecourt connect the visitor centre to the natural environment. With its clearly defined structure, the centre provides visitors with a warm and secure welcome. Openness and transparency are achieved through the judicious use of materials, light and open space.

## COST

3 575 000 EUR (net price)

## ARCHITECTURAL COMPETITION

1<sup>st</sup> prize  
restricted competition

## CONCEIVED BY

WW + ARCHITEKTUR &  
MANAGEMENT SARL  
info@wwplus.lu  
www.wwplus.eu  
T. +352 26 17 76

## CLIENT

GRÜN BERLIN GMBH







# GERMANY

Bitburg

2013-2015

Postareal Bitburg, Germany

The new post office district on the outskirts of the city of Bitburg, Germany creates an entrance to the town by the pedestrian zone. The project features high quality-standards and affords a sustainable inner-city mix of outlets, services and housing. It contributes to urban life with people invited to linger in new pavement cafés and public spaces.

## ARCHITECTURAL COMPETITION

1<sup>st</sup> prize Commission based on negotiated procedure

## COST

7 632 000 EUR (net price)

## CONCEIVED BY

WW + ARCHITEKTUR &  
MANAGEMENT SARL  
info@wwplus.lu  
www.wwplus.eu  
T. +352 26 17 76

WERNER SCHAACK  
architect, Trier (GER)

HDK DUTT & KIST GMBH  
Saarbrücken (GER)

## CLIENT

GBT WOHNUNGSBAU UND  
TREUHAND AG







# GERMANY

Cologne

2011

## Courtyards in a Court

The leitmotif of “Courtyards in a Court” is the desire to live individually with privacy in a vibrant neighbourhood. In 2010, eleven families from Cologne decided to avoid typical urban sprawl. They developed their own housing project reflecting a desire for a concentrated, urban lifestyle. This compact city block allows residents to choose how to mix privacy with collective living. Flexible floor plans enable each occupant’s lifestyle to be taken into account.

### ARCHITECTURAL COMPETITION

Category ‘realisation’

### COST

2 470 000 EUR

### CONCEIVED BY

DEWEY MULLER PARTNERSCHAFT MBB  
ARCHITEKTEN STADTPLANER  
info@deweymuller.com  
www.deweymuller.com  
T. +352 26 38 58 1

ENERGIEBÜRO VOM STEIN  
consulting engineer in other disciplines

STRACKE INGENIEURGESELLSCHAFT MBH  
consulting structural engineer

### CLIENT

ES LEBE SÜLZ GBR







## GERMANY

Dessau-Ziebig

2011

Individual and semi-detached houses

Several of this group of houses pay homage to historic structures. A ramp leads from the road to the car park. The living room is slightly above ground level, with the garden accessible via a stairway. The glass rooftop and the cut-away roof terrace are other significant features in stand-alone houses. Wood is a constant theme in this project, with only the external staircase wrapped in expanded metal. The broad projection of the roof also shapes the exterior and is significant regarding how the houses are oriented towards the pavilion. The design of the open spaces is also important, with an integrated trellis and a planted slope screening the garage from the garden.

### — CONCEIVED BY

VALENTINY HVP ARCHITECTS SARL  
office@hvp.lu  
www.valentinyarchitects.com  
T. +352 23 60 70 1

### — CLIENT

AACHENER & MÜNCHENER







# GERMANY

Frankfurt am Main  
2011

Town hall on the market

Building a museum in the historical centre of Frankfurt meant integrating archaeological remains and reconstructing/renovating old town houses. The Stadthaus building features a multipurpose hall, housing, and several possibilities for public events. It blends in harmoniously with the historical site, using some of the intact outlines of old buildings. The main hall, with its copper shell, «floats» over an archaeological site.

## ARCHITECTURAL COMPETITION

4<sup>th</sup>, then winner after VOF procedure

## COST

14 200 000 EUR

## CONCEIVED BY

CHRISTIAN BAUER & ASSOCIES  
ARCHITECTES SA  
cba@cba.lu  
www.cba.lu  
T. +352 33 03 67 1

MEURER GENERALPLANER GMBH (MGP)  
architect  
www.meurer-architekten.com

B+G INGENIEURE, BOLLINGER UND  
GROHMANN  
consulting structural engineer  
www.bollinger-grohmann.de

MÜLLER BBM GMBH  
consulting building technologies  
engineer

PBR PLANUNGSBÜRO ROHLING AG  
consulting building technologies  
engineer  
www.pbr.de

## CLIENT

DOMRÖMER GMBH









## GERMANY

Igel-Liersberg  
2010

Residential home Welsch

This project blended a family house harmoniously into its rural environment. It was essential for the building to maintain transparency between the occupied and the rural space with its meadows and gardens. Buildings and open spaces are thus now in perfect harmony, while respecting local tradition.

### ARCHITECTURAL COMPETITION

1<sup>st</sup> place 'exemplary construction in the region'

### COST

300 000 EUR

### CONCEIVED BY

AGRI-PLAN SARL  
gwelsch@agriplan.lu  
www.agriplan.lu  
T. +352 32 64 64 563

### CLIENT

GABRIELA WELSCH







# GERMANY

Kaiserslautern

2011

## Hotel Lautertaler Hof

The renovation and expansion of the "Lautertaler Hof" is a perfect example of modernisation and how to increase town-centre density. The inner courtyard hosts a new wing with six double rooms, a breakfast area and a roof terrace. Beautiful pergolas connect the various building elements. The once-abandoned courtyard at the back has been transformed into a living and dining area.

### COST

1 200 000 EUR

### CONCEIVED BY

BALLINPITT ARCHITECTES  
URBANISTES SA  
info@ballinpitt.lu  
www.ballinpitt.lu  
T. +352 45 31 01 1

MARS GROUP architect  
www.mars-group.eu

### CLIENT

HOTEL LAUTERLATER HOF







# GERMANY

Mannebach

2011

House Luy-Rommelfangen

The simplicity of design of this two-floor building enables it to blend harmoniously with its setting in the village of Mannebach. The lack of a roof-overhang and its built-in terraces are discreet, while there is transparency between inside and outside spaces, and a deep respect for the natural environment. The living rooms all face in a south-westerly direction, with small windows cultivating a feeling of intimacy. The outside space creates a harmonious blend of horticulture and secluded areas.

## — ARCHITECTURAL COMPETITION

In 2006, the building received the distinction "Vorbildliches Bauen im Landkreis Trier-Saarburg"

## — COST

500 000 EUR

## — CONCEIVED BY

BALLINIPITT ARCHITECTES  
URBANISTES SA  
info@ballinipitt.lu  
www.ballinipitt.lu  
T. +352 45 31 01 1

SIMON & CHRISTIANSEN SA  
consulting building technologies  
engineer  
www.simon-christiansen.lu

BEB SA  
consulting structural engineer

## — CLIENT

MARLIES LUY-ROMMELFANGEN







# GERMANY

Osnabrück

2011

## Forum am Dom

The "Forum am Dom" project features the restructuring, renovation and reorganisation of this central spot in the city. The historical museum, the cathedral, the new choir room, the cafeteria meeting hub, as well as several offices for the choir and the cathedral parish now constitute a new cultural site in the historical heart of the city. The project was to add new volume and visibility to the historical site, whilst ensuring the best thermal insulation.

## ARCHITECTURAL COMPETITION

Winner

## COST

2 400 000 EUR

## CONCEIVED BY

CHRISTIAN BAUER & ASSOCIES  
ARCHITECTES SA

cba@cba.lu

www.cba.lu

T. +352 33 03 67 1

PBR PLANUNGSBÜRO ROHLING AG

architect

www.pbr.de

## CLIENT

CATHEDRAL CHAPTER OSNABRÜCK







## GERMANY

Perl-Nennig

2011

Reconstruction of a farmhouse  
in the vineyard of Nennig

The transformation of this old farmhouse into a single family house followed two key principles: highlighting the historical structure of the building and illuminating the rooms with as much natural light as possible. The structure and facades remained intact, and were restored to their original glory. The masterpiece of the building is the magnificent wooden stairs which are bathed in light. The old barn was opened up to the vineyard by creating bay windows in the walls. The smaller rooms in the farmhouse are converted into secluded private areas. An intelligent combination of old and new materials highlights the traditional character and gives a modern touch.

### COST

300 000 EUR

### CONCEIVED BY

MORPH4 SARL  
morph4@morph4.com  
www.morph4.com  
T. +352 26 51 25 26

### CLIENT

VAN LOON, REIJNDERS







# GERMANY

Prüm

2013–2014

KNE Niederprüm, Germany

The new operational and administrative headquarters for the firm KNE represents an important early step for the expansion of the L11 retail park in Niederprüm, Germany. The distinctive cubular building with its eye-catching size, blends assertively into the steep hilly landscape, forming a landmark in its natural setting. The concrete base works with the ground slope, fitting into the topography. The administrative and operational buildings are separated from the depot yard, forming a specific complex characterised by a front with vertical timber cladding. The exterior is a physical expression of the company's ecological vision.

## — ARCHITECTURAL COMPETITION

Restricted competition, 2<sup>nd</sup> price  
Commission based on negotiated  
procedure

## — COST

3 018 560 EUR (net price)

## — CONCEIVED BY

WW + ARCHITEKTUR &  
MANAGEMENT SARL  
info@wwplus.lu  
www.wwplus.eu  
T. +352 26 17 76

WERNER SCHAACK  
architect, Tier (GER)

HDK DUTT + KIST GMBH  
architect, Saarbrücken (GER)

## — CLIENT

KOMMUNALE NETZE EIFEL-AÖR







## GERMANY

Saarbrücken

2011

### Conference Hall in Saarbrücken

A key objective of the large-scale renovation of this 1960s building was to optimise the acoustics in the conference hall. The multi-purpose performance hall is the principal venue for the Saarbrücken and Kaiserslautern philharmonic orchestras. The backstage has been adapted and a new gallery introduced using steel consoles. The red-lacquered panelling and the decorative brass appliques add a contemporary touch.

#### CONCEIVED BY

VALENTINY HVP ARCHITECTS SARL  
office@hvp.lu  
www.valentinyarchitects.com  
T. +352 23 60 70 1

#### CLIENT

CONGRESS CENTRUM SAAR GMBH







## GERMANY

Saarlouis  
2011

Theatre “Am Ring”

The renovated “Am Ring” theatre is now a terracotta sculpture. A crack separates the facade from the main building, thus making the reception area appear larger. The theatre hall is accentuated by a zestful facade that engages spectators. The facade coating is in fine concrete, and this allows for a playful design of shadow and light. The roof seems to be floating over the building itself.

### — CONCEIVED BY

VALENTINY HVP ARCHITECTS SARL  
office@hvp.lu  
www.valentinyarchitects.com  
T. +352 23 60 70 1

### — CLIENT

MUNICIPALITY OF SAARLOUIS







## GERMANY

Trier

2008 – 2010

Water strip Project in Trier  
«Am Wasserband»

The project contributes to create a lively urban as well as economically healthy district. Located on a site that formerly housed the regional garden festivals, the building adroitly makes use of the topography to combine different urban facilities : a long bar-like block housing freehold apartments of different sizes rests on a series of four diversely designed boxes that offer commercial and service facilities. Some of the 22 apartments are of the duplex type, allowing for a great deal of spatial flexibility

### COST

EUR 5.2m excl VAT

### CONCEIVED BY

CHRISTIAN BAUER & ASSOCIÉS  
ARCHITECTES S.A  
107, rue de Hollerich  
L-1741 Luxembourg  
Tel. 0 03 52 / 33 03 671  
Fax 0 03 52 / 33 26 23  
cba@cba.lu

INGENIEURBÜRO DIETER LOHNER  
Consulting structural engineer  
Medardstraße 101,  
54294 Trier

### CLIENT

STEFFEN HOLZBAU S.A.







## GERMANY

Trier

2011

Tower of dreams and aspirations

This stainless steel monument was a gift from the Luxembourg City to Trier, presented at the Rhineland-Palatinate flower show. The material used creates a link to the earth, while the design reaches boldly for the sky. Together this showcases substantial cutting-edge technical know-how. The terrace affords a panoramic view across the Moselle river valley. The effect incorporates the visitor into the monument from the moment they enter and during their ascension of the platform.

### — CONCEIVED BY

VALENTINY HVP ARCHITECTS SARL  
office@hvp.lu  
www.valentinyarchitects.com  
T. +352 23 60 70 1

### — CLIENT

CITY OF LUXEMBOURG







## GERMANY

Trier

2012–2014

Trier “Posthof”

Revitalising and converting the old central post office building on the Kornmarkt into an office and retail building is part of a larger urban revival project. Creating a lively, creative, multifunctional site, with sensitive treatment of the well-preserved existing structure will contribute to the success of this vision. Flexibility and new accents help create a novel setting for the old building, thus attracting tenants, visitors and customers. Highly individual solutions, inspired by a love of detail, make this site a unique feature that only exists here in this form, with its own special charm and historical resonance.

### — ARCHITECTURAL COMPETITION

1<sup>st</sup> prize

Start of realisation of sections  
(conservation legislation related  
agreements) 09/2011

### — CONCEIVED BY

WW + ARCHITEKTUR &  
MANAGEMENT SARL  
info@wwplus.lu  
www.wwplus.eu  
T. +352 26 17 76

### — CLIENT

TRIER CORE S.A.







## GERMANY

Weinsheim

2011

EFH in Weinsheim

This home in a new housing estate in Weinsheim (village of Prum, Rhineland-Palatinate, Germany) marries elegance, tradition and a contemporary feel. The aim was to blend the building with its environment while maintaining individuality. It features a clever transition between outdoor and indoor space by not only using surrounding terraces, but with a biotope at the entrance of the dining room. The effect of transition is further underlined by a stone wall which runs from inside to out. It is the house's focal point, wrapping itself around the staircase and the first-floor rooms.

### COST

700 000 EUR

### CONCEIVED BY

BALLINPITT ARCHITECTES  
URBANISTES SA  
info@ballinpitt.lu  
www.ballinpitt.lu  
T. +352 45 31 01 1









# KOSOVO

Ferizaj/Prizren  
2011

Project KSV/015/2 vocational skill centres

Creating two centres of expertise in Ferizaj (for health and treatment) and in Prizren (for business) in Kosovo was part of a professional training project supported by the governments of Kosovo and Luxembourg. A modular system was used, allowing for future adaptation whenever needed. Each centre features 6,300 sqm of space and contains a dozen classrooms, at least fifteen workshops and an after-school centre. Outside, the centres have a sports field and several facilities spread over approximately one hectare per centre. Other high-priority requirements for this project were comprehensive studies, management, and supervision of the construction work and supplies.

## COST

6 500 000 EUR

## CONCEIVED BY

HOLWECK, BINGEN ARCHITECTES SC  
architect  
[www.hba.lu](http://www.hba.lu)

SGI, INGENIERIE SA  
[info@sgigroupe.com](mailto:info@sgigroupe.com)  
[www.sgigroupe.com](http://www.sgigroupe.com)  
T. +352 49 37 37 1

## CLIENT

LUX-DEVELOPMENT S.A.







# POLAND

Warsaw

2011

## Polish History Museum

The Polish History Museum is to be built in a wooded area of Warsaw, next to the 17th century Ujazdowski castle. A 1970s highway disturbs this peaceful environment, thus the building must work to restore harmony to this natural and historical site. Its strict, rational, voluminous structure will strike a contrast with the facades' fullness and spaces.

### ARCHITECTURAL COMPETITION

Winner

### CONCEIVED BY

ARCHITECTES PACZOWSKI ET  
FRITSCH SARL  
aa@apf.lu  
www.apf.lu  
T. +352 22 07 55 1

RFR S.A.  
consulting structural engineer

CHRISTIAN GERMANAZ,  
MUSÉOGRAPHER, PARIS

EL.CH, LANDSCAPE ARCHITECTS  
MUNICH

### CLIENT

MUSEUM OF POLISH HISTORY,  
WARSAW, POLAND







## SPAIN

Salamanca  
2011

Semi-detached bioclimatic house

The architectural concept of this building is centred on minimising its environmental impact. The building consists of a new semi-detached house with restored barns and stables converted into an apartment and a hall for events. The south-facing facade (on the side of the patio and old barns) combines traditional and modern design. Composed of glass, this facade affords a view from the stairwell onto the village. Furthermore, its temperature is self-regulated in both summer and winter.

### COST

About 800 000 EUR (construction price in Spain)

### CONCEIVED BY

COURT ARCHITECTURE SARL  
court@court-architecture.com  
www.court-architecture.com  
T. +352 27 84 93 13

### CLIENT

FAMILY DE VEGA SÁENZ DE TEJADA







# CHINA

Shanghai  
2011

Luxembourg Shanghai Expo Pavilion  
2010

The motto of the World-Expo in Shanghai in 2010 was “A better city, a better life”. These values are reflected in the monolithic sculptural Luxembourg pavilion, with its permeability alluding to ideas of global exchange and communication. The pavilion is based on a concept of a fortress set in green, wooded surroundings, an impression amplified by the use of the recyclable materials steel, glass, and wood. At the centre is a 20 m tower with a silhouette of an abstract, clearly exaggerated form that suggests a traditional Luxembourgish family house. The enclosing wall can be visited from the inside and from the roof top. This defines the territorial make-up of Luxembourg, but also offers an exhibition space equipped for business presentations, alongside a restaurant and an amphitheatre.

## ARCHITECTURAL COMPETITION

1<sup>st</sup> prize

## CONCEIVED BY

VALENTINY HVP ARCHITECTS SARL  
office@hvp.lu  
www.valentinyarchitects.com  
T. +352 23 60 70 1

INCA, INGENIEURS CONSEILS  
ASSOCIES SARL  
info@inca-ing.lu  
www.inca-ing.lu  
T. +352 42 68 90 1

## CLIENT

GOVERNMENT OF LUXEMBOURG  
AND GIE\_LUXEMBOURG@  
EXPOSHANGHAI2010







# SAUDI ARABIA

Riyadh

2011

King Saud University Sport Campus  
Arena

This multi-purpose hall can accommodate up to 9,400 seated spectators. The 150 m wide self-supporting roof rests on trellised beams, thus enabling uninhibited sight-lines throughout the main hall.

## — CONCEIVED BY

SCOTT TALLON WALKER ARCHITECTS  
architect

SCHROEDER & ASSOCIES SA  
robert.jeworowski@schroeder.lu  
www.schroeder.lu  
T. +352 44 31 31 1

## — CLIENT

KING SAUD UNIVERSITY









# ALGERIA

Algiers

2011

BNP Paribas El Djazaïr headquarters

The new headquarters of BNP Paribas El Djazaïr in Algeria contain four underground floors and nine above-ground, totalling 30,000 sqm surface area. In compliance with Algerian regulations, the construction was designed according to local earthquake engineering rules. The building consists of reinforced concrete with a metallic structure and floors cast-in-place.

## CONCEIVED BY

A.T.S.P. ARCHITECTURE  
architect  
[www.atsp.eu](http://www.atsp.eu)

SGI, INGENIERIE SA  
[info@sgigroupe.com](mailto:info@sgigroupe.com)  
[www.sgigroupe.com](http://www.sgigroupe.com)  
T. +352 49 37 37 1

## CLIENT

BNP PARIBAS EL-DJAZAÏR









# ALGERIA

Moretti/Algiers

2011

Design studies for the Forum El Djazair in Algiers

This tourist and housing estate is part of the government authority's project to convert the Moretti (Aller) zone into an integrated complex. The zone features four apartment towers, apartments with terraces leading to the beach, office space, a private general hospital, a shopping mall, a hotel with 270 rooms, 40 holiday apartments, a fitness centre, a marina, as well as a club with bowling alleys, an ice-skating rink and pool tables.

## CONCEIVED BY

ARCHICOP  
architect  
[www.archicop.com](http://www.archicop.com)

SGI, INGENIERIE SA  
[info@sgigroupe.com](mailto:info@sgigroupe.com)  
[www.sgigroupe.com](http://www.sgigroupe.com)  
T. +352 49 37 37 1

## CLIENT

EMIRAL









# BENIN

Cotonou

2007 – 2011

Development and reconstruction works on the north west exit of Cotonou, Benin

This project includes controlling and surveying construction and reconstruction work of the north-west road exit from Cotonou, the economic capital of Benin. This is part of the construction work of the urban area drive through in the city between Porto Novo and Ouidah Abomey-Calavi. The work undertaken was extremely varied, and included converting road sections into high-density urban areas, side path construction work, setting up culvert crossings, and doubling the capacity of the Godomey Bridge.

## COST

39 616 000 EUR

## SUPERVISED BY

TR ENGINEERING SA  
e-mail@tr-engineering.lu  
www.tr-engineering.lu  
T. +352 49 00 65 1

## CLIENT

MINISTRY OF FINANCE - PUBLIC WORKS  
DEPARTMENT - BENIN







# BURKINA FASO

Pabré Department

2009 – 2012

Drinking water supply in the rural department of Pabré

This facility is used to study, test and supervise the drinking water supply works in the villages of the Pabré local authority in Burkina Faso. The work provided:

- three drinking water supply facilities in Pabré centre, Pabré St. Joseph and Katabtenga
- seven simplified drinking water supply facilities in Bendatoega, Bilgo, Goupama, Nedego, Sabtenga, Salle and Zouma
- 11 small and medium hydraulic facilities in Bidougou, Bigtogo, Dabaré, Gaskaye, Koankin, Kodemtoré, Napamboumbou, Sag-Nioniogo, Wavougoué, Yamba and Zibako.

## COST

1 907 543 EUR

## CONCEIVED BY AND SUPERVISED BY

TR ENGINEERING SA  
e-mail@tr-engineering.lu  
www.tr-engineering.lu  
T. +352 49 00 65 1

## CLIENT

MUNICIPALITY OF PABRÉ







## BURKINA FASO

Liaison Sakoinse -

Boromo (RN1)

2013 - 2015

Road works between No. 01 and  
Sakoinsé Boromo, Burkina Faso

The 122 km stretch of highway between Sakoinse and Boromo is part of the route linking Ouagadougou, the capital of Burkina Faso, with the country's second largest city Bobo-Dioulasso. This also represents one of the key corridors linking the country to other states of the West African Economic and Monetary Union. The engineering quality of the route is extremely important given that these are land-locked countries. Also, the road is of national importance, running next to 22 villages.

### COST

70 250 000 EUR

### SUPERVISED BY

TR ENGINEERING SA  
e-mail@tr-engineering.lu  
www.tr-engineering.lu  
T. +352 49 00 65 1

### CLIENT

MINISTRY OF ECONOMIC AND FINANCE  
BURKINA FASO







# CAPE VERDE

Praia  
2011

EHTCV

A school and a park are combined on one level, spread over the full surface area of the site. The fence is a constituent part of the facade and also affords solar protection. Several patios of different sizes and styles increase bioclimatic efficiency.

The open spaces, “the empty”, are as relevant as the structures in this project.

The classrooms are spread over three levels, overlooking the esplanade and giving shade. The open spaces on the ground floor have all the features necessary to facilitate practical courses. The building respects all hotel industry standards (EHTCV) and is HACCP certified.

## COST

4 258 159 EUR

## CONCEIVED BY

KHOZE ARCHITECTURE SARL  
gabriel.mambu@khoze.lu  
www.khoze.lu  
T. +352 26 29 62 49

## CLIENT

LUX-DEVELOPMENT S.A.









# GABON

Libreville

2011

## Aman Resorts hotel construction

This project is part of Gabon's strategy to become a destination of choice for ecotourism, helped by the sustainable development of infrastructure in its national parks. The project's main objective was to limit the environmental impact of seeking sustainable solutions for three luxury hotels in Libreville (Aman Resorts), Pointe Ngombé and Missala. Each hotel offers 40 rooms, 30 villas and 20 tents, with abundant facilities such as restaurants, bars and spas. The works involved structural changes and road alterations, as well as the installation of electricity, plumbing and mechanical utilities.

### CONCEIVED BY

DENNISTON  
architect  
[www.denniston.com.my](http://www.denniston.com.my)

SGI, INGENIERIE SA  
[info@sgigroupe.com](mailto:info@sgigroupe.com)  
[www.sgigroupe.com](http://www.sgigroupe.com)  
T. +352 49 37 37 1

### CLIENT

LUXURY GREEN RESORT









## IVORY COAST

Abidjan

2011

Renovation of the African  
Development Bank headquarters

Around 50,000 sqm of office space was brought up to current international standards for technical and technological development. It is spread over two adjacent 18 floor towers, both offering underground parking and technical rooms. Lifts facilitate vertical movement, with horizontal movement thanks to curved forms installed around this core. Energy performance has been improved by replacing the curtain wall system.

### COST

47 250 000 EUR

### CONCEIVED BY

GROUPEMENT SCET-TUNISIE / CABINET  
WBM / CABINET CLR / ICI-CI  
architect

SGI, INGENIERIE SA  
info@sgigroupe.com  
www.sgigroupe.com  
T. +352 49 37 37 1

### CLIENT

AFRICAN DEVELOPMENT BANK







## REPUBLIC OF THE CONGO

Brazzaville

2011

Control and supervision of the "Route de la Corniche"

The "Route de la Corniche" in Brazzaville was re-evaluated and extended at the request of the Republic of the Congo. A 560 m -high cable-braced viaduct and a 360 m -high access viaduct are the star features of this project. Another highlight was the refurbishment of the panoramic site close to the Case de Gaulle in which works of art are on display. An important aspect of the project was to reduce noise pollution for neighbouring residents.

### CONCEIVED BY

SGI, INGENIERIE SA  
info@sgigroupe.com  
www.sgigroupe.com  
T. +352 49 37 37 1

SETEC  
consulting engineer in other disciplines  
www.setec.fr

### CLIENT

REPUBLIC OF THE CONGO







## BRAZIL

Trancoso

2011

Música Em Trancoso

The “Mozarteum Brasileiro Theatre” accommodates indoor and outdoor audiences, each with seating for 1,100 people. The theatre will host various cultural and socio-educational activities, thus becoming a permanent centre for cultural activity. There are eight rehearsal rooms, several meeting rooms, and a spacious bar area. The design contrasts curved and triangular openings, as the building integrates into Trancoso’s natural environment. Imposing panels, etched in bronze, created by the Brazilian artist Maria Bonomi define the character of this cultural meeting place. The engravings refer to the local natural environment with its impressive cliff faces, and the birth of the Brazilian nation.

### CONCEIVED BY

VALENTINY HVP ARCHITECTS SARL  
office@hvp.lu  
www.valentinyarchitects.com  
T. +352 23 60 70 1

### CLIENT

MUSICA EM TRANCOSO













# — 19 certified ecological projects in Luxembourg

## Overview

---

– Beckerich	p.140
– Diekirch	p.142
– Esch-sur-Alzette	p.144
– Kayl	p.146
– Luxembourg	p.148-167
– Soleuvre	p.168
– Strassen	p.170-175
– Windhof	p.176

## LUXEMBOURG

Beckerich

2010

Passive house

This new construction sees three storeys integrated into an existing rural village house. The form is arranged around a patio. The entrance hall-garage inside the passive enclosure serves as a buffer against street and neighbourhood noise. There are wood chip and biogas heating systems, with photovoltaic sensors panels providing electricity.

### CERTIFICATION

Gréng Hausnummer & ETIKA

### COST

280 000 EUR

### CONCEIVED BY

BENG ARCHITECTES ASSOCIES SA  
albert.goedert@beng.lu  
www.beng.lu  
T. +352 54 94 30







# LUXEMBOURG

Diekirch

2011-2015

Nature and Forests Administration

The Nature- and Forestry Administration building in Diekirch is a pilot project and as well a showcase for positive-energy-balanced construction type, producing more energy than required. Furthermore it is labelled by the DGNB with the highest distinction "platinum". The project is conceived at the western entrance of Diekirch, bordered with two important landscape-axes, the avenue in the north and the river with its promenade in the south. To comply with the desire to use exclusively certified wood, the construction-respectively the structure concept was designed by two three-level volumes built of timber. These two parts, arranged north- and south, are connected with a central concrete core. The architectural integrated photovoltaic-systems in the south-façade and on the roofs ensure the energy needed and the power-surplus.

## CERTIFICATION

DGNB Platinum certificate

## COST

7 500 000 EUR

## CONCEIVED BY

MORPH4 SARL  
morph4@morph4.com  
www.morph4.com  
T. +352 26 51 25 26

BARSAOTTI CHRISTIAN  
architect  
www.atelierb.lu

## CLIENT

MINISTRY OF SUSTAINABLE  
DEVELOPMENT AND INFRASTRUCTURE -  
PUBLIC WORKS ADMINISTRATION







# LUXEMBOURG

Esch-sur-Alzette

2006–2010

Banque B.I.L.

The Luxembourg offices of the Canadian bank, RBS Investor Services, can accommodate up to 3,000 employees. This flagship building on the southern Belval campus was the first services business to open on this industrial brownfield site. It co-exists with the renovated extinguished blast furnaces, a university, research facilities, offices, retail outlets and residential units. Its enamelled facades are of deep red, a touch that brings to mind the site's steel-production heritage. The floors leading up to the atrium form a succession of terraces accommodating common services, meeting rooms, restaurants, foyers, and the auditorium. Access to the tower is via panoramic lifts. The atrium is located between two side structures that form two rods pointing towards the street.

## CERTIFICATION

DGNB Gold

## COST

125 000 000 EUR

## ARCHITECTURAL COMPETITION

Competition winner

## CONCEIVED BY

VASCONI ARCHITECTES  
LUXEMBOURG SARL  
thomas.schinko@vasconi.fr  
www.vasconi.lu  
T. +352 35 23 40 59 1

JEAN PETIT ARCHITECTES S.A.  
Luxembourg  
architecture@jean-petit.lu  
www.jean-petit.lu

## CLIENT

BANQUE INTERNATIONALE  
À LUXEMBOURG S.A.







# LUXEMBOURG

Kayl

2009–2011

« Editus » building

The outstanding performance of the thermal envelope ensures a consistent and comfortable environment through the use of thermo-active concrete slabs. In order to minimize electrical demand, the building relies primarily on natural light for illumination. The position and dimensions of a mechanically controlled ventilation system are optimized to reduce energy consumption. From an ergonomic, acoustic, ecological and health point of view, the characteristics of this construction were so well planned that it became the first building in Luxembourg to obtain DGNB Gold certification. In 2015 DGNB added a platinum certification to which the building was then upgraded.

## CERTIFICATION

DGNB Platinum

## COST

13 380 000 EUR

## CONCEIVED BY

BEILER + FRANÇOIS ARCHITECTES S.À R.L.  
info@bf-archi.lu  
www.bf-archi.lu  
T. +352 26 36 46

DAEDALUS ENGINEERING S.À R.L.  
Consulting structural engineer  
www.daedalus.lu

JEAN SCHMIT ENGINEERING S.À R.L.  
Consulting technical engineer  
www.jse.lu

AIB VINÇOTTE  
Control office  
www.vincotte.lu

CSD SÉCURITÉ S.A.  
Consulting engineer in other discipline  
www.pgroup.eu

## CLIENT

POST LUXEMBOURG







## LUXEMBOURG

Luxembourg

2011–2015

New building complex  
BGL BNP Paribas

The new BNP Paribas building complex in Luxembourg is an identifiably urban object at the entrance to the Plateau du Kirchberg, thus becoming the East Gate / Porte Est of the Ville de Luxembourg. The two buildings are configured on a two-floor podium block linking avenue J.-F. Kennedy and rue E. Steichen, and have connections to the existing Kronos building. In the project's design, the BNP Paribas group in Luxembourg has placed the emphasis on respect for the environment. Special attention has been devoted to environmentally-friendly technologies as well as the minimal consumption of energy and natural resources. The Group's objective is a triple environmental certification at European level (DGNB in Germany, BREEAM in the United Kingdom, HQE in France). The project has already obtained an «HQE Exceptionnel» [High Environmental Quality, Exceptional category] certificate, in the implementation phase.

#### CERTIFICATION

HQE "Exceptionnel", DGNB, BREEAM (In process of obtaining)

#### COST

200 000 000 EUR (incl VAT)

#### ARCHITECTURAL COMPETITION

1<sup>st</sup> place

#### CONCEIVED BY

M3 ARCHITECTES S.A.  
mail@m3archi.lu  
www.m3architectes.lu  
T. +352 26 44 74-1

SGI, INGENIERIE S.A.  
info@sgigroupe.com  
www.sgigroupe.com  
T. +352 49 37 37 1

GOBLET LAVANDIER & ASSOCIES  
INGENIEURS-CONSEILS S.A.  
www.golav.lu  
T. +352 43 66 76 1

WIRTZ INTERNATIONAL NV  
martin@wirtznv.be  
www.wirtznv.be  
T. +32 3 680 13 22

#### CLIENT

BGL BNP PARIBAS







# LUXEMBOURG

Luxembourg

2011-2013

International School of Luxembourg -  
New Kindergarten and Primary School

The International School of Luxembourg building helps students in their multilingual environment, and facilitates learning in small and large groups. It was built for 560 students and 100 teachers, and also features a cafeteria, an auditorium and offices.

## CERTIFICATION

DGNB

## ARCHITECTURAL COMPETITION

1<sup>st</sup> place

## CONCEIVED BY

ARCO ARCHITECTURE COMPANY SARL

[arco@arco.lu](mailto:arco@arco.lu)

[www.arco.lu](http://www.arco.lu)

T. +352 42 17 70

INCA, INGENIEURS CONSEILS

ASSOCIES SARL

consulting structural engineer

[www.inca-ing.lu](http://www.inca-ing.lu)

BETIC SA

consulting building technologies

engineer

[www.betic.lu](http://www.betic.lu)

E3 CONSULT SARL

consulting engineer in other disciplines

[www.e3consult.lu](http://www.e3consult.lu)

## CLIENT

INTERNATIONAL SCHOOL  
OF LUXEMBOURG









# LUXEMBOURG

Luxembourg  
2010

## Vertigo

Vertigo has four wings built around an atrium. This office building is of high aesthetic, technical and functional quality, and it minimises the environmental impact. In Luxembourg, this was the first building to have been designed, built and managed to the French High Environmental Quality (HQE) standard which respects strict building and management principles.

### CERTIFICATION

HQE

### ARCHITECTURAL COMPETITION

FIABCI excellence award, Luxembourg  
2011 in the category "offices"

### CONCEIVED BY

ASSAR ARCHITECTS SARL  
pca@assar.com  
www.assar.com  
T. +352 44 13 67 1

MILESTONE  
consulting engineers  
www.mstconsult.lu

FELGEN ENGINEERING  
consulting building technologies  
engineers  
www.felgen-be.eu

### CLIENT

ALLFIN LUXEMBOURG









# LUXEMBOURG

Luxembourg  
2010-2019

## ROYAL - HAMILIUS

The Royal-Hamilius complex has 5 buildings with a total surface of 36.000 sqm and accommodates offices, retails and residential areas. The offices and the retail buildings are being certified according to the "BREEAM Europe Commercial 2009" scheme.

### CERTIFICATION

BREEAM Excellent (offices)  
BREEAM Very Good (retail)  
(Design Stage)

### CONCEIVED BY

FOSTER + PARTNERS and TETRA KAYSER  
Associés S.A.  
architects  
[www.tetra.lu](http://www.tetra.lu)

ENERGIE ET ENVIRONNEMENT SA  
[info@enerenvi.lu](mailto:info@enerenvi.lu)  
[www.enerenvi.lu](http://www.enerenvi.lu)  
T. +352 22 46 23

FELGEN & ASSOCIES Engineering S.A.  
consulting building technologies  
engineer  
[www.felgen.lu](http://www.felgen.lu)

VK Architects & Engineers  
consulting structural engineer  
[www.vkgroup.be](http://www.vkgroup.be)

### CLIENT

CODIC LUXEMBOURG









# LUXEMBOURG

Luxembourg

2016

## Offices Royal Grace

It is the nearness of the park that inspired the architecture of the building. The observation of the structure of the trees has driven to the concept of this innovative façade. That is to say a more structured façade at the base, analogy to the tree trunk which becomes more and more filigreed in the upper levels, as tree branches. This is what gives its grace to this pure and elegant building. The Boulevard Royal is a place where Luxembourg sandstone has a good place, shall it be on historical houses or more contemporary buildings. We have opted for a golden dominant structure which reminds this warm language from the sandstone.

### CERTIFICATION

BREEAM rating Excellent

### CONCEIVED BY

FABECK ARCHITECTES  
mail@fabekarchitectes.lu  
www.fabekarchitectes.lu

SOGEDEC  
Consulting structural engineer

BETAVI  
consulting engineer in other disciplines

### CLIENT

LUXLAND S.A.









# LUXEMBOURG

Luxembourg

2016

One on One

The volume of this administrative building is underlined by the use of 12 glass walls. The office space on six floors is characterised by a high degree of flexibility.

## CERTIFICATION

Pre-certified BREEAM “Excellent” for a new building

## CONCEIVED BY

MORENO ARCHITECTURE &  
ASSOCIES SARL  
moreno@moreno.lu  
www.moreno.lu  
T. +352 26 48 27 75

INCA, INGENIEURS CONSEILS  
ASSOCIES SARL  
consulting structural engineer  
walter.detoffol@inca-ing.lu  
www.inca-ing.lu

BUREAU D'ETUDES BOYDENS  
LUXEMBOURG SARL  
consulting building technologies  
engineer  
www.boydens.lu

## CLIENT

IKOGEST / PHAROS REAL ESTATE FUND







# LUXEMBOURG

Luxembourg

2012-2014

## AIRE

The building has a total surface of 4.600 sqm and accommodates offices. The building has been certified according to the "BREEAM Europe Commercial 2009" scheme.

## CERTIFICATION

BREEAM Very Good

## CONCEIVED BY

M3 ARCHITECTES SA  
architect  
[www.m3architectes.lu](http://www.m3architectes.lu)

ENERGIE ET ENVIRONNEMENT SA  
[info@enerenvi.lu](mailto:info@enerenvi.lu)  
[www.enerenvi.lu](http://www.enerenvi.lu)  
T. +352 22 46 23

JEAN SCHMIT ENGINEERING SARL  
consulting building technologies  
engineer  
[www.jse.lu](http://www.jse.lu)

MILESTONE, CONSULTING  
ENGINEERS SARL  
consulting structural engineer  
[www.mstconsult.lu](http://www.mstconsult.lu)

## CLIENT

ALLFIN LUX







# LUXEMBOURG

Luxembourg

2016

Mixed use development 'commerce and residential'

The shopping center is very well located in the heart of a new city district part of the Ban de Gasperich, extending over an area of 75000m for a hypermarket and 100 shops around and a large underground parking of 2,850 places that develops on four levels and is accessible from 3 different inputs. In order to enhance the approach the project owner has engaged in an English international environmental quality certification for the mall. It will be also developed two residential towers on 25000m peaking at 60m height. The apartments follow a logic optimization and intelligent use of space while providing high quality services. They will benefit from a high level of energy performance by getting the highest score in their category namely Class AAA.

## COMPETITION

2014 - winner of the international competition and conception

## CERTIFICATION

BREEAM rating Excellent

## CONCEIVED BY

FABECK ARCHITECTES  
conception  
mail@fabekarchitectes.lu  
www.fabekarchitectes.lu

FABECK ARCHITECTES & SCHEMEL  
WIRTZ ARCHITECTES  
development and executions

SIT-LUX  
consulting engineer in other disciplines  
SGi & Archest  
consulting structural enigneer

## CLIENT

LCO1 S.A. & LCO2 S.A.







# LUXEMBOURG

Luxembourg

2009–2012

European Court of Auditors K3

The K3 six-story office building of the European Court of Auditors continues to enhance the urban environment of the Kirchberg plateau. Aligned along Rue Tony Rollman, the K3 completes the previous K2 addition. Narrow fixed shutters and vertical elements painted in diverse, gradient colors produce a playful prism effect and create a welcoming atmosphere.

## CERTIFICATION

BREEAM

## COST

55 000 000 EUR

## CONCEIVED BY

ATELIER D'ARCHITECTURE ET DE  
DESIGN JIM CLEMES S.A.  
[www.jimclemes.com](http://www.jimclemes.com)  
[info@jimclemes.com](mailto:info@jimclemes.com)

BENG ARCHITECTES ASSOCIES S.A.  
[www.beng.lu](http://www.beng.lu)  
[info@beng.lu](mailto:info@beng.lu)

## CLIENT

EUROPEAN COURT OF AUDITORS







# LUXEMBOURG

Luxembourg  
2005–2008

## EKI Building

With its 5 wrapped-in-glass wings, this building offers views into interior courtyards, with a total surface of 73.000 sqm of which 14.300 sqm is office space, the building accomodates offices of the European Investment Bank.

The building has been certified according to the “BREEAM Bespoke Pre-2005 Version” and was the first project to be certified BREEAM on the European Continent.

### CERTIFICATION

BREEAM Excellent

### ARCHITECTURAL COMPETITION

1<sup>st</sup> prize

### CONCEIVED BY

INGENHOVEN ARCHITECTS GMBH  
architect  
[www.ingenhovenarchitects.com](http://www.ingenhovenarchitects.com)

ENERGIE ET ENVIRONNEMENT SA  
[info@enerenvi.lu](mailto:info@enerenvi.lu)  
[www.enerenvi.lu](http://www.enerenvi.lu)  
T. +352 22 46 23

B4F BUILDING FOR THE FUTURE SARL  
consulting engineer in other disciplines  
[www.b4f.eu](http://www.b4f.eu)

### CLIENT

EUROPEAN INVESTMENT BANK









## LUXEMBOURG

Soleuvre

2008–2009

Single-family home

The expansion and transformation of this 1950s semi-detached house into a low-energy property was carried out in 2009. This renovation led to more rational use of the house's sloped location, with the living room moved to the garden level and expanded. The garage is located on the ground floor.

### CERTIFICATION

Gréng Hausnummer

### COST

600 000 EUR

### CONCEIVED BY

BENG ARCHITECTES ASSOCIES SA  
[info@beng.lu](mailto:info@beng.lu)  
[www.beng.lu](http://www.beng.lu)  
 T. +352 54 94 30







# LUXEMBOURG

Strassen

2010-2011

## Grégoire building

This retail, office and housing construction is DGNB-gold certified. It features high environmental quality building material, and meets all Life Cycle Cost requirements on energy use. The reinforced concrete slabs are temporised, the acoustic quality maximised, and all the rooms are ventilated using a highly energy-efficient system. Interior wooden and other fittings were chosen based on low levels of VOC and formaldehyde.

### CERTIFICATION

DGNB (pre-certified in Gold)

### COST

6 850 000 EUR

### CONCEIVED BY

BEILER ET FRANCOIS ARCHITECTES SARL  
[info@bf-archi.lu](mailto:info@bf-archi.lu)  
[www.bf-archi.lu](http://www.bf-archi.lu)  
T.+352 26 36 46

ICR INGENIEURS CONSEILS REUNIS SA  
consulting structural engineer  
[www.icr-groupe.com](http://www.icr-groupe.com)

INGETECH SA  
consulting structural engineer  
[www.ingetech.lu](http://www.ingetech.lu)

E3 CONSULT SARL  
consulting engineer in other disciplines  
[www.e3consult.lu](http://www.e3consult.lu)

PROJECT SA  
consulting engineer in other disciplines  
[www.progroup.eu](http://www.progroup.eu)

### CLIENT

ALPHA PROPERTIES







# LUXEMBOURG

Strassen

2011

## Horizon

Horizon is a near-zero energy building in Luxembourg City. It combines strong concern for architectural efficiency with the desire for very high energy performance. It is equipped with 900 sqm of photovoltaic cells which produce the greater part of its energy needs, exceeding national regulatory standards. In addition to a high quality protection against the sun's rays, thermally-activated concrete slabs regulate both heating and cooling. The ventilation system combined with a heat recovery unit increases comfort while reducing energy costs. The building design is simple and flexible, combining open plan with individual office units. A multitude of design options are available to satisfy a wide range of working styles.

### CERTIFICATION

HQE

### COST

9 000 000 EUR (without tax, fees, land and additional costs)

### CONCEIVED BY

POLARIS ARCHITECTS SARL  
info@polaris.lu  
www.polaris.lu  
T. +352 26 38 99 10

HOUSETECH SA  
consulting building technologies  
engineer  
www.housetech.lu

STINTEC SA  
consulting structural engineer

PROJECT SA  
consulting engineer in other disciplines  
www.progroup.eu

### CLIENT

GROUPE SCHULER







# LUXEMBOURG

Strassen

2010

## Serenity building

With certified high environmental quality, this administrative site has four identical spaces linked via glass walkways at the entrance, by the lift shaft, and by the emergency staircase. This project is set on a plot of 50 m which runs alongside the Route d'Arlon, with a depth of 180 m. Close to residential areas, the building's design creates a link with the office area. Each office enjoys a clear external view, with no internal courtyard. The architecture is sober and on a human scale.

### CERTIFICATION

HQE n° NF380/09/253 from 25.02.2010

### CONCEIVED BY

FABECK ARCHITECTES SARL  
mail@fabeckarchitectes.lu  
www.fabekarchitectes.lu  
T. +352 26 30 80 1

GOBLET LAVANDIER & ASSOCIES  
INGENIEURS-CONSEILS SA  
consulting building technologies  
engineer  
www.golav.lu

BETAVI  
betavi@pt.lu  
www.betavi.lu

MILESTONE, CONSULTING  
ENGINEERS SARL  
consulting engineer in other disciplines  
www.mstconsult.lu

### CLIENT

CLI S.A.







# LUXEMBOURG

Windhof

2010 – 2012

## Solarwind

Solarwind brings together various businesses and services (daycare, gym, restaurant) and respects the strictest rules related to sustainable growth, gaining triple certification to underscore this achievement. With this in mind, 100% of material used is reusable, with certified material always taking priority in construction and operational activity. Green electricity and responsible energy is produced, and waste managed in a sustainable fashion, thus making the building a model for cost saving and efficiency.

### CERTIFICATION

HQE (FR); BREEAM (GB) et DGNB (D)

### COST

24 Mio EUR excl. VAT

### CONCEIVED BY

ATELIER D'ARCHITECTURE DARIUSZ  
PAWLOWSKI SARL  
dpawlowski@atarch.lu  
www.piwpaw.com  
T. +352 34 71 04 1

PROgroup S.A.  
consulting building technologies  
engineer  
www.progroup.eu

### CLIENT

PROGROUP AND SCHULER













## — Discover Luxembourgish architecture, engineering and urbanism in Luxembourg

Services offered by OAI

Clients Award

## — Bauhärepräis 2016

317 architectural and engineering projects

Placed under the high patronage of HRH the Grand Duke, the clients award “Bauhärepräis 2016” is awarded every 4 years to private or public project owners who have been able to emphasize quality architecture, engineering or urbanism through a successful project.

Through their outstanding and sustainable realizations, they support the architectural quality and promote the culture of construction, urban development and planning in Luxembourg. The Bauhärepräis aims to inspire future project owners and make them aware of their important role within the urbanization. Well-informed project owners provide a cultural renewal within our quality of life with an architecture that is more than just functional.

Discover the large range of supporting documentation, as well as films on the winning projects with interviews of the project owners on [WWW.BHP.LU](http://WWW.BHP.LU).





## — Guide OAI 2016

### “Références Architectes et Ingénieurs-Conseils”

Foster your culture of construction with the « OAI BRICK », a reference book for architecture and consulting engineering in Luxembourg!

The publication features 750 projects realized by OAI members, giving an insight into the current state of the construction field. It constitutes also an efficient tool to get in contact with the skilled women and men who conceive and realize their clients' individual ideas.

135 architect offices, 45 consulting engineer offices, 4 interior architect offices, 23 urban designer and master planner offices and 2 landscape architect / landscape engineer offices illustrate the diversity of professions gathered within the OAI. All those independent actors work on smart and sustainable solutions for a better quality of life.

The Guide can be purchased at the OAI secretariat for 25 euros including taxes (6, boulevard Grande-Duchesse Charlotte, Luxembourg / Email : [oai@oai.lu](mailto:oai@oai.lu) / Web : [www.oai.lu](http://www.oai.lu)), and at various libraries; or by bank transfer (25 euros + shipping costs) (Luxembourg : 10 EUR ; other countries : relative to POST LUXEMBOURG rate for package of 2kg [www.post.lu](http://www.post.lu)) on the bank account OAI: IBAN LU52 0019 1000 4602 3000, BIC BCEELULL, communication « Guide 2016 » and shipping address.

**[WWW.OAI.LU](http://WWW.OAI.LU) / “PUBLICATIONS GRAND PUBLIC”**

## — Contemporary architectural guide for Luxembourg

This second edition of the guide to contemporary architecture features 14 itineraries through the Grand Duchy of Luxembourg and allows 294 exemplary projects of architecture and engineering to be discovered.

The colour code and pictograms should easily direct you through the itineraries. A map illustrates the realizations on each route.

Short descriptions with information concerning architectural aspects, the project owners, architects, consulting engineers, completion date and the address with GPS coordinates are also included.

The indicated municipalities represent stages for each route and invite to discover numerous touristic attractions.

**[WWW.ARCHITECTOUR.LU](http://WWW.ARCHITECTOUR.LU)**  
**[WWW.OAI.LU](http://WWW.OAI.LU)**

**architect**tour.lu

## — Notes











— [www.oai.lu](http://www.oai.lu)

**OAI**

ORDRE DES ARCHITECTES  
ET DES INGENIEURS-CONSEILS

**LU**  **EMBOURG**  
LET'S MAKE IT HAPPEN