

## Proportional Reasoning Practice

## Did You Hear About...

A	B	C	D	E	F
G	H	I	J	K	L

Use a calculator to do each exercise. Find your answer and notice the word next to it. Write this word in the box containing the letter of the exercise.

I. Solve. Round each answer to the nearest tenth.

(A)  $\frac{7.5}{12} = \frac{4.2}{x}$

(B)  $\frac{15}{8} = \frac{80}{x}$

(C)  $\frac{6}{9.4} = \frac{x}{32}$

(D)  $\frac{7.9}{x} = \frac{1}{25}$

(E)  $\frac{12}{x} = \frac{3.14}{1}$

(F)  $\frac{x}{58} = \frac{37.5}{100}$

II. Solve. Round each answer to the nearest whole number.

(G) Tom's red bicycle travels 50 ft for every 3 pedal turns. How many pedal turns are needed to travel a mile (5,280 ft)?

(H) For a survey, a company decided to call 7 out of every 5,000 people. How many people should be called in a town of 78,000 people?

(I) Gloria Trench checked her gas mileage and found that she had used 16.6 gal of gas to travel 372 mi. At this rate, how many gallons will she use to travel from San Francisco to Washington, D.C., a distance of 2,850 mi?

(J) A U.S. nickel contains 3.9 g of copper and 1.2 g of nickel. How many kilograms of copper must be combined with 500 kg of nickel to make nickel coins?

(K) On the stock exchange, 100 shares of Pizzazz Corp. stock are selling for \$425. How many shares can be purchased for \$1,000?

(L) At Paul Bunyon's logging camp, the cook scrambled 20 eggs for every 3 loggers. How many eggs did he need for the 288 loggers at the camp?

24.7 PIECES

21.8 STORIES

1,840 FAINTED

197.5 DROPPED

19.6 THAT

1,625 CAN

6.7 THE

116 BOX

20.4 WHO

127 TRASH

1,355 PILE

317 INTO

235 AND

3.8 TEN

42.7 WRITER

109 A

324 FROM

1,920 LIVED

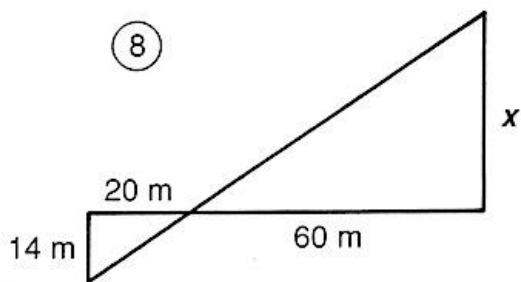
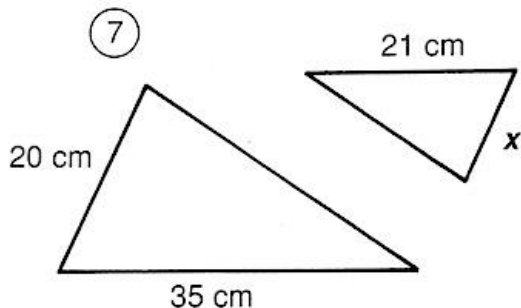
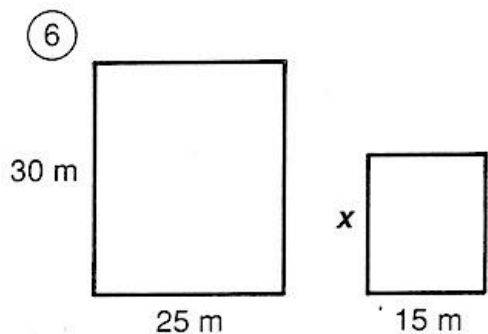
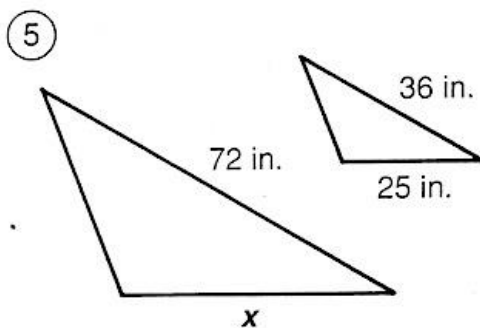
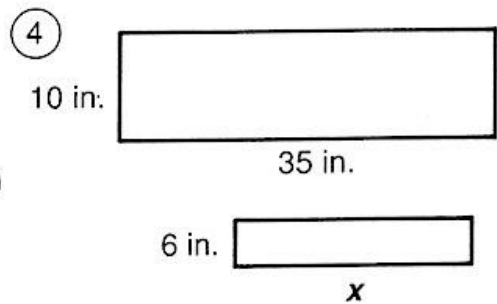
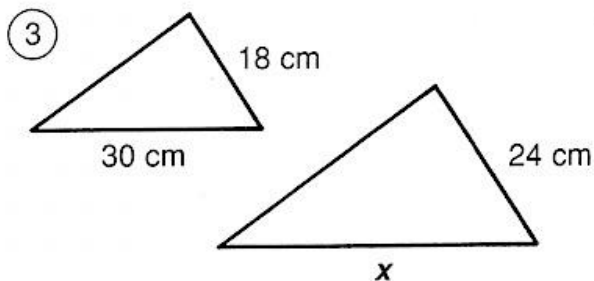
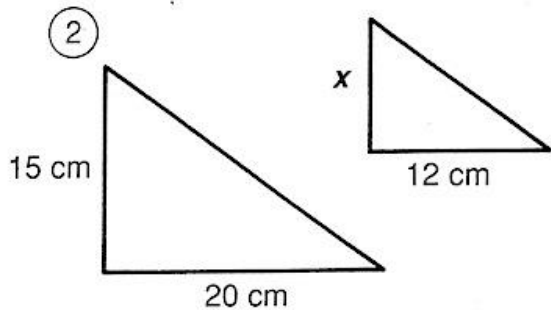
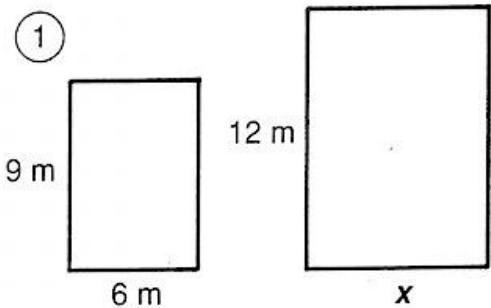
211.5 WROTE

# What Is a Termite's Favorite Breakfast?

For each pair of similar figures, find the length  $x$ . Cross out the letter next to your answer. When you finish, the answer to the title question will remain.

E  
L  
T  
A  
G  
G  
E  
S  
M  
K  
D  
A  
C  
O  
O  
F  
W

9 cm
14 cm
15 ft
20 m
50 in.
8 m
24 in.
12 cm
16 ft
46 m
21 in.
44 cm
10 cm
18 m
48 in.
40 cm
42 m



- ⑨ A flagpole casts a shadow 10 ft long. If a man 6 ft tall casts a shadow 4 ft long at the same time of day, how tall is the flagpole?

- ⑩ A photograph is 25 cm wide and 20 cm high. It must be reduced to fit a space that is 8 cm high. Find the width of the reduced photograph.