



ACCURATE
LOCK & HARDWARE
AMERICAN CRAFTED SINCE 1972

733 Horizontal Mortise Lock

MODERN SECURITY MEETS EUROPEAN LUXURY

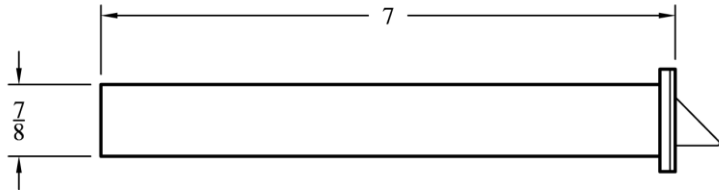


733 HORIZONTAL MORTISE LOCK

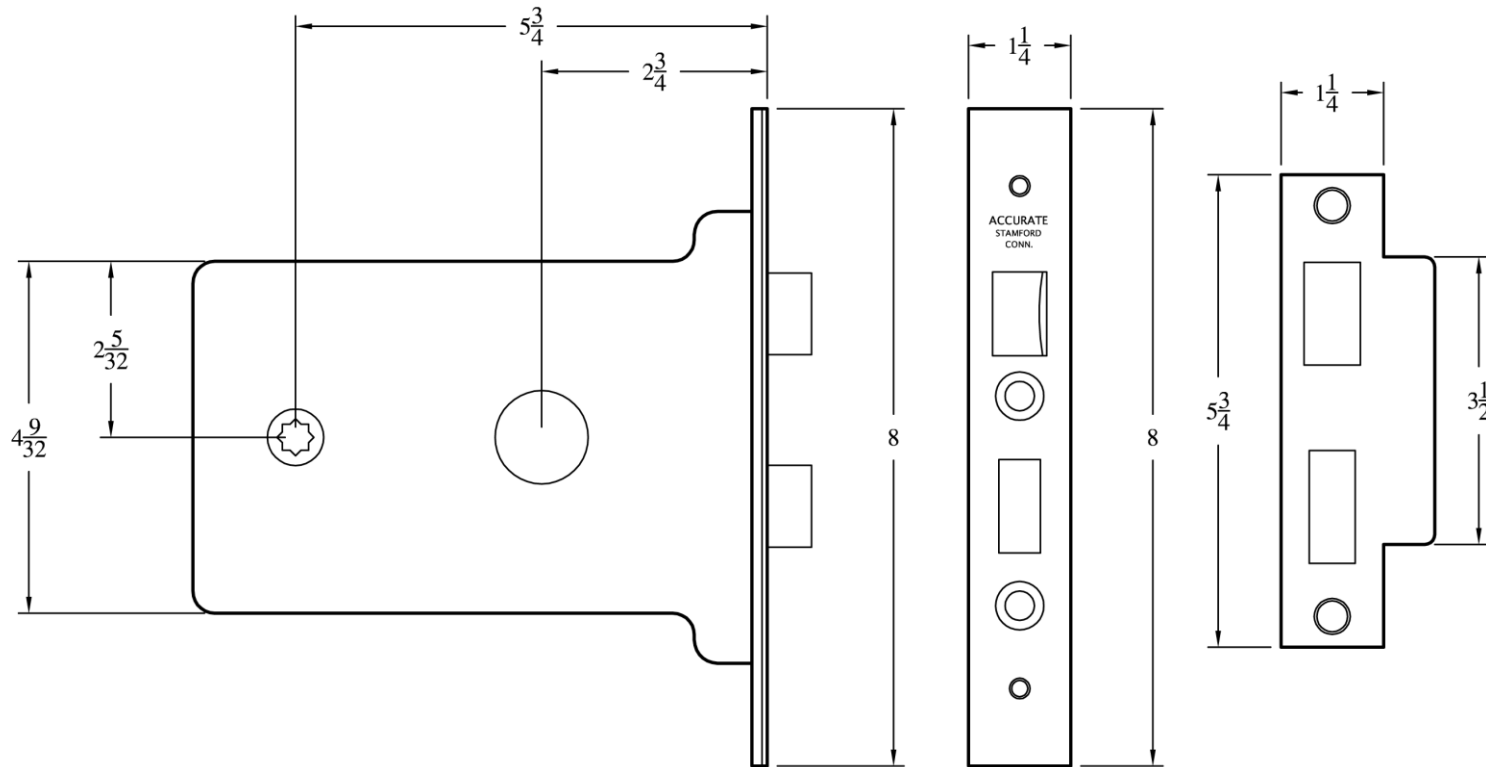
Originally designed for traditional European-style hardware, the horizontal mortise lock offers a secure locking solution to pair with knob trim. The nostalgic aesthetic is perfect for a chic entry that embraces period elegance.

- Ideal for decorative doors with a cross rail
- Ergonomic design creates extra space between the knob and the jamb for comfortable operation
- Available in most architectural finishes to match highly decorative knob designs

733 Horizontal Mortise Lock: Technical Details



OPERATION: Latch bolt operated by knob both sides. Outer knob may be set by stop. When outer knob is stopped, latch bolt is operated by key from outside. Dead bolt operated by key outside, thumb turn inside.



LATCH BOLT: 1/2" throw

DEAD BOLT: 1/2" throw

BACKSET: 2 3/4" to cylinder, 5 3/4" to knob

HUB: Available in different sizes to be compatible with various knob trim

THUMB TURN HUB: 3/16" (5mm) on the diamond

FRONT: Flat or No. 2 Bevel ($\frac{1}{8}$ " in 2"), please specify

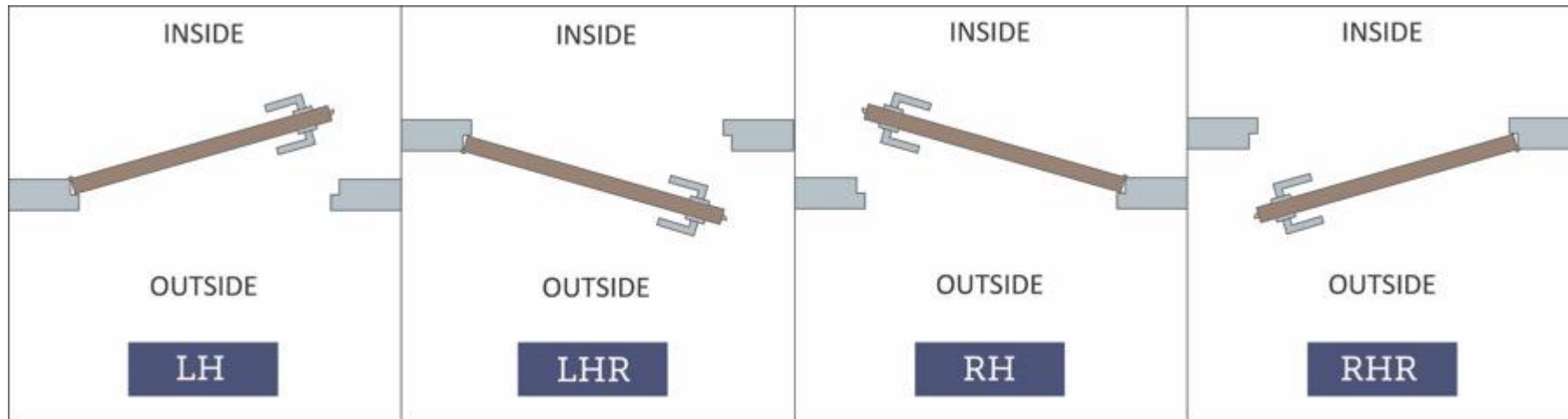
ARMOR FRONT: Brass, stainless steel or bronze, finished as required

STRIKE: 5 3/4"

DUST BOX: Brass, stainless or US10B available to order (please specify if needed)

HOW TO SPECIFY

HANDING



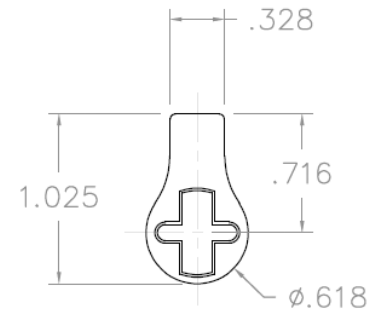
FINISHES

GROUP 1: US4, US4NL, US32D, US26D

GROUP 2: US3, US3NL, US26, US32, US9, US10, US10B, US14, US15, US19

GROUP 3: BN, BB, TN, TB, DURO, ESN, US15A, US5

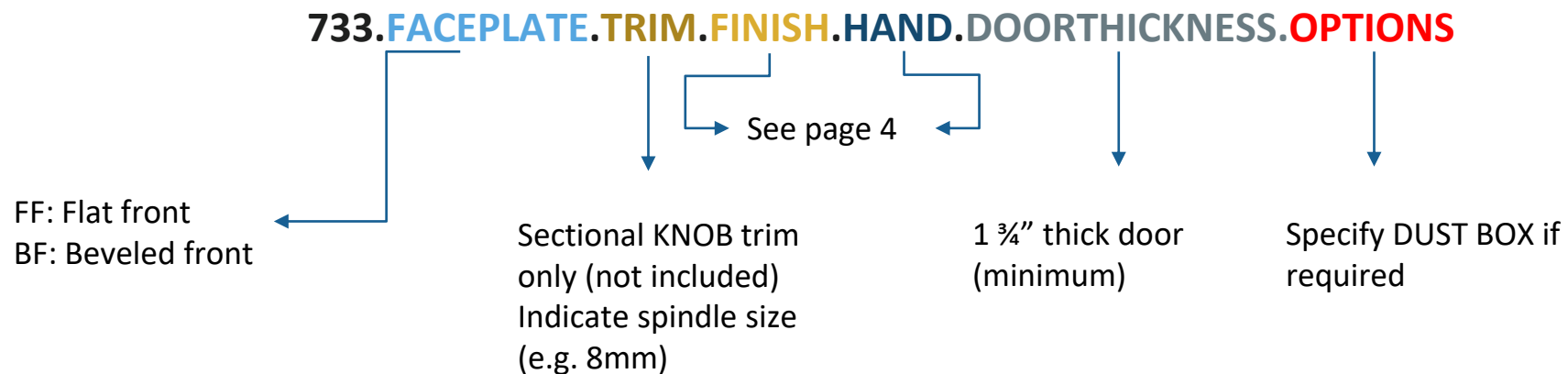
To view example of finishes visit: [Accurate Finishes](#).



CYLINDERS & KEYING

The 733 lock accepts any standard American mortise cylinder with a straight cam.

HOW TO SPECIFY



EXAMPLES

Horizontal mortise lock for use with 8mm spindle | Wood door | Polished brass | dust box required

E.g.: **733.BF.8mm.US3.RH.134.DUST BOX**

Horizontal mortise lock for use with Baldwin knobs/roses | Wood door | Burnished brass | no dust box required

E.g.: **733.BF.Baldwin knobs/roses.BB.LH.214**

Horizontal mortise lock for use with 9/32" spindle | Metal door | Satin nickel | no dust box required

E.g.: **733.FF.9/32".US15.RH.134**

**ACCURATE LOCK & HARDWARE
MANUFACTURERS OF LOCKS AND
CUSTOM ARCHITECTURAL HARDWARE**

1 Annie Place | Stamford, CT 06902

P: 203.348.8865

F: 203.348.5234

E: sales@accuratelockandhardware.com

www.accuratelockandhardware.com



AMERICAN CRAFTED
— SINCE 1972 —