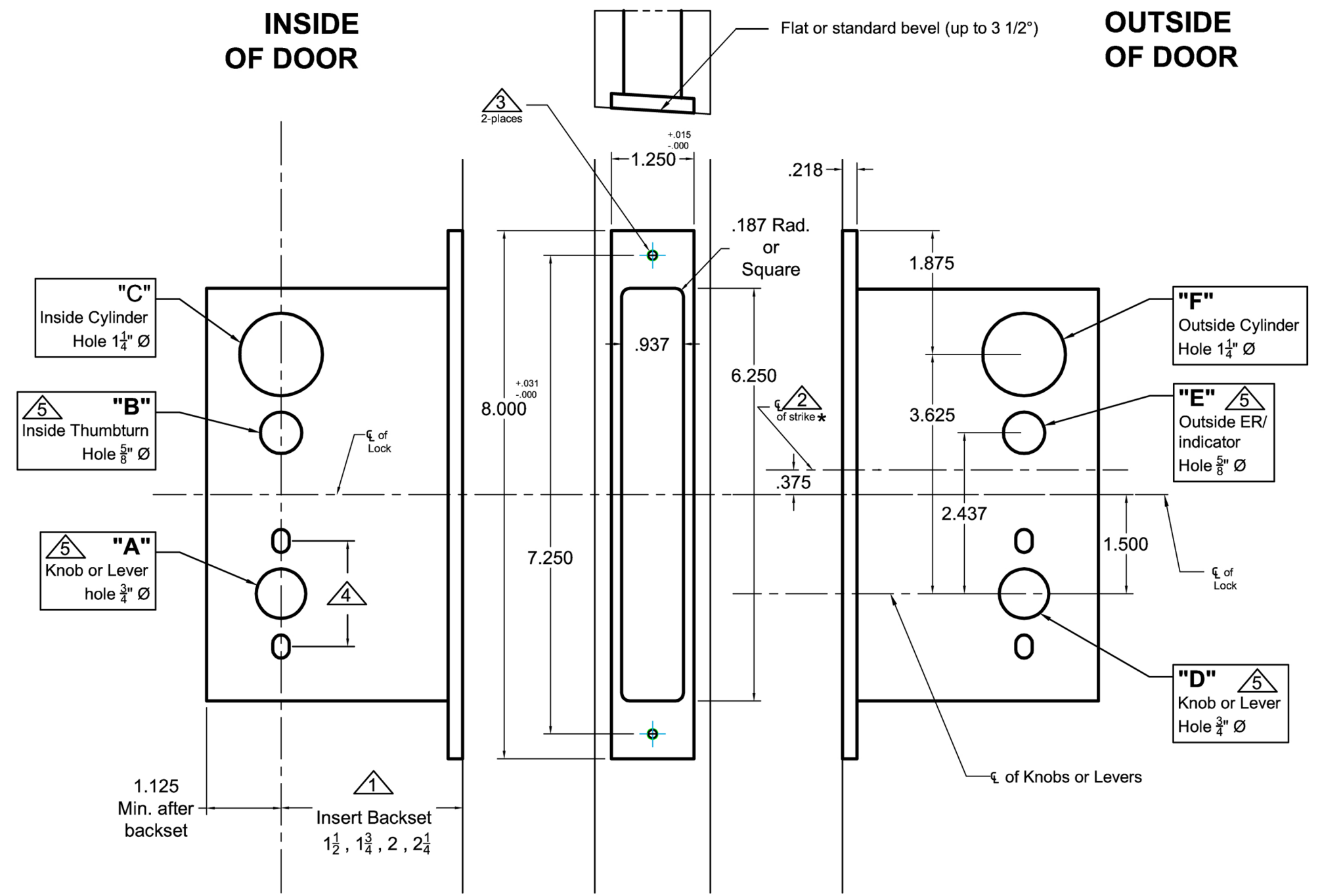


Lock Functions	"A" knob/lever = 3/4" dia.	"B" thumbturn = 5/8" dia.	"C" cylinder = 1 1/4" dia.	"D" knob/lever = 3/4" dia.	"E" ER or indicator = 5/8" dia.	"F" cylinder = 1 1/4" dia.
8800ADL	●			●		
8801	●					●
8802		●				●
8803	●	●		●		●
8822	●	●		●		●
8824	●	●		●		●
8825	●			●		●
8839	●	●		●	○	
8842	●			●		●
8845	●			●		●
8848	●	●		●		●
8849	●	●		●		●
8856	●			●		●
8859	●			●		●

● Required Holes
○ Optional Holes



Notes:

- △ Insert backset here 1 1/2", 1 3/4", 2", 2 1/4"
- △ ASA strike details on template # T-ALH.ASA.STK (*use template #T-ALH.ASADB.STK for #s 8801,8802 and 8803)
- △ Prep for #12 wood or 12-24 machine screws
- △ Thru bolting holes **ONLY** if required. See trim manufacturers standard template for details.
Accurate lock's accommodates 1 1/2" to 1 11/16" center to centers and up to 1/4" dia. post.
If there are any additional questions about the thru-bolting, please contact our office.
- △ Knob, thumbturn and ER holes may vary from different trim manufacturers. Please refer to their templates to confirm these dimensions.

Additional Notes:

- a) **Responsibility:** Door and frame manufacturers are responsible for providing adequate construction or re-inforcement for proper installation of hardware shown.
- b) Please contact us if a double lip strike is needed - for a proper template
- c) See catalog / spec sheets for additional lock details



Standard 8800 Lever x Lever or Knob x Knob- All Backsets

T-ALH.8800.LL