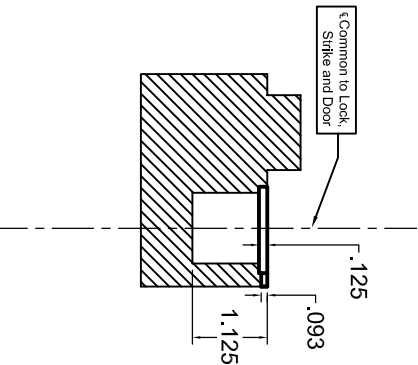
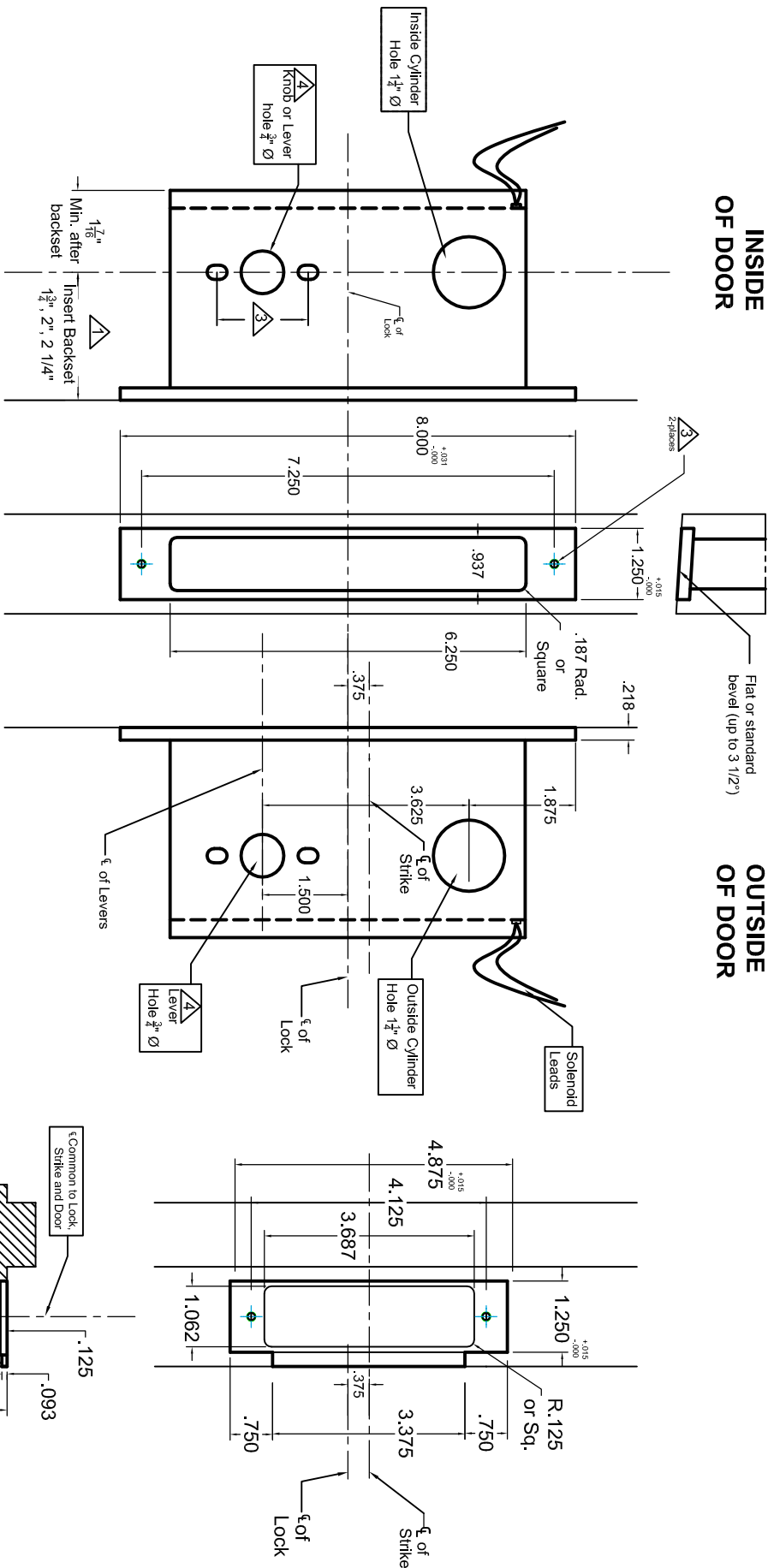


INSIDE
OF DOOR

OUTSIDE
OF DOOR



Notes:

- Δ Insert backset here $1\frac{3}{4}"$, $2"$, $2\frac{1}{4}"$
- Δ Prep for #12 wood or #12-24 machine screws
- Δ Thru boring holes **ONLY** if required. See trim manufacturers standard template for details.
- Accurate lock's accommodates $1\frac{1}{2}"$ to $1\frac{11}{16}"$ center to centers and up to $\frac{3}{4}"$ dia. post. If there are any additional questions about the thru-boring, please contact our office.
- Δ Lever holes may vary from different trim manufacturers. Please refer to their templates to confirm these dimensions.

Additional Notes:

- a) **Responsibility:** Door and frame manufacturers are responsible for providing adequate construction or re-reinforcement for proper installation of hardware shown.
- b) Please contact us if a double lip strike is needed - for a proper template
- c) See catalog / spec sheets for additional lock details

ACCURATE

LOCK & HARDWARE

AMERICAN CRAFTED SINCE 1972



Standard M8858E Template

All Backsets

T-ALH.M8858E