



# ACCURATE

## LOCK & HARDWARE

AMERICAN CRAFTED SINCE 1972

---

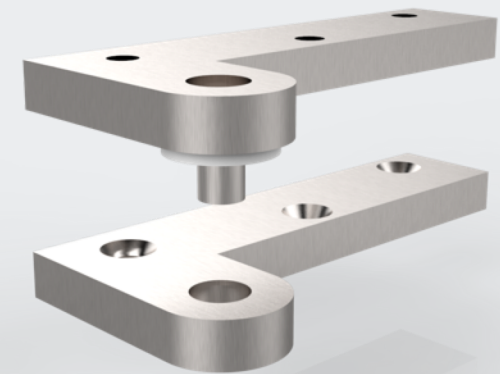
### OFFSET PIVOTS

Hanging Doors with the Laws of Physics in Full Swing

# OFFSET PIVOT HINGES

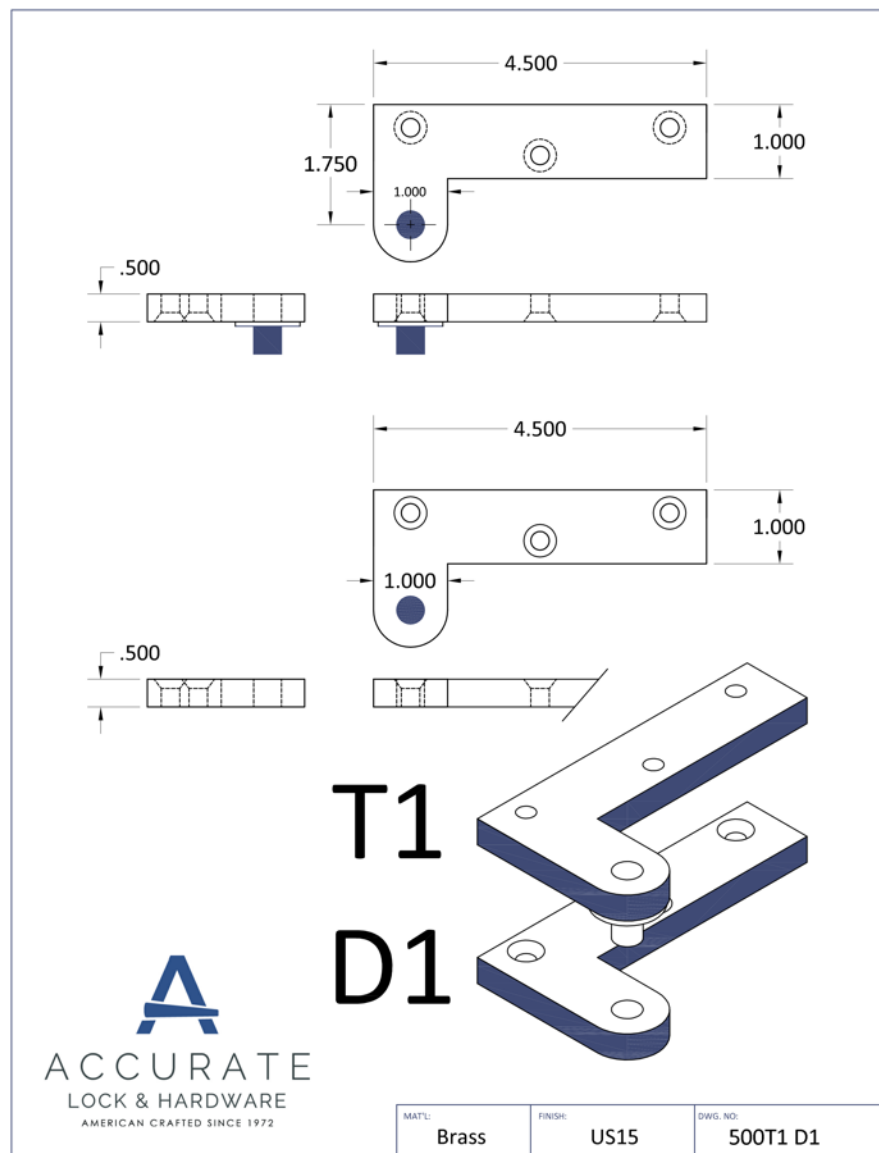
## ELEVATING THE SIMPLE TASK OF HANGING A DOOR

- A variety of custom configurations and offsets allow for different door mounting and swing scenarios
- Custom made to order from 3/8" (standard) or 1/2" (heavy duty) stock brass material, bearings included
- Intermediate and Dutch door pivots available
- Standard and custom finishes available



PIVOT MEMBERS

# Pivot Configurations



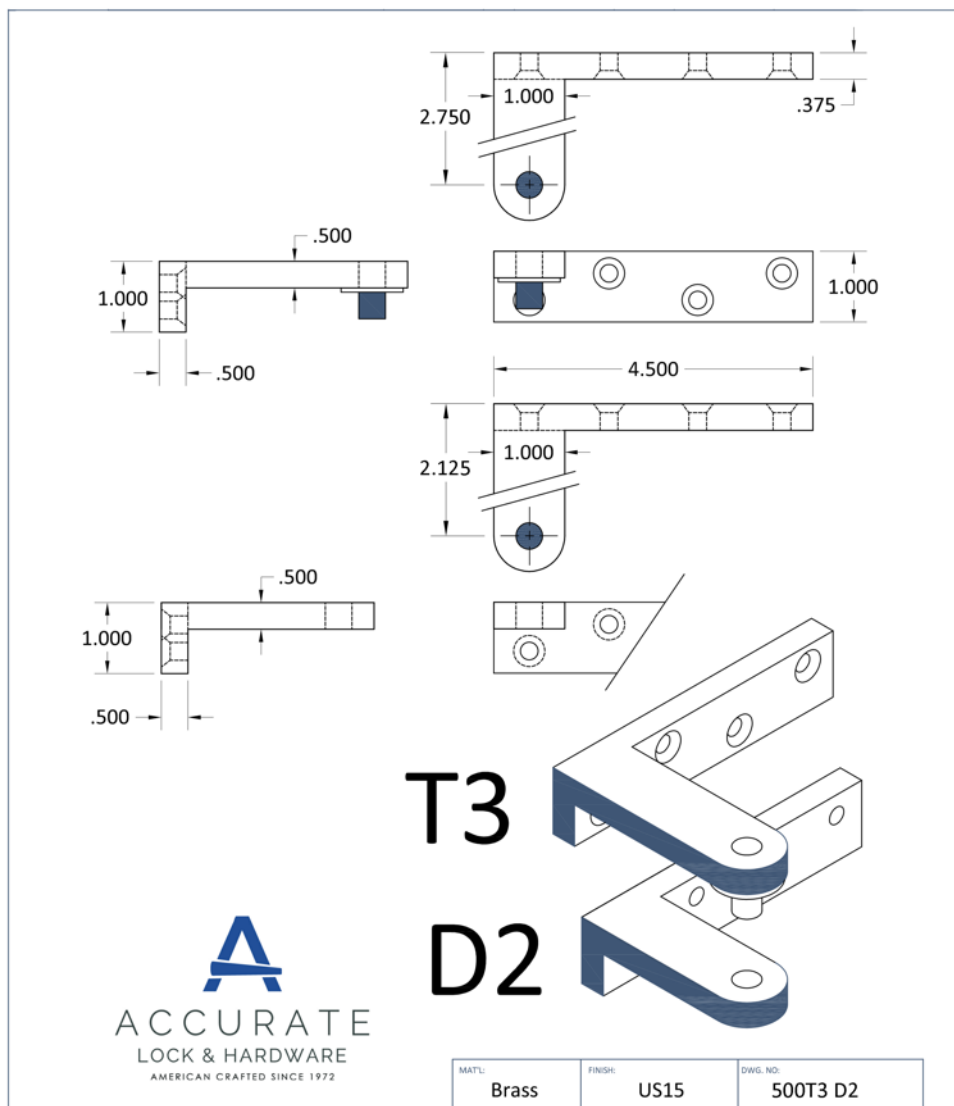
## T1, D1, D1, B3

1<sup>3</sup>/<sub>4</sub>" heel to center dimension shown

For 1<sup>3</sup>/<sub>4</sub>" thick doors, with <sup>3</sup>/<sub>8</sub>" offset

Top member mounted into the header

# Pivot Configurations



## T3, D2, D2, B4

For  $1\frac{3}{4}$ " thick doors, with  $\frac{3}{8}$ " offset

The top member is mounted horizontally into the frame behind the door

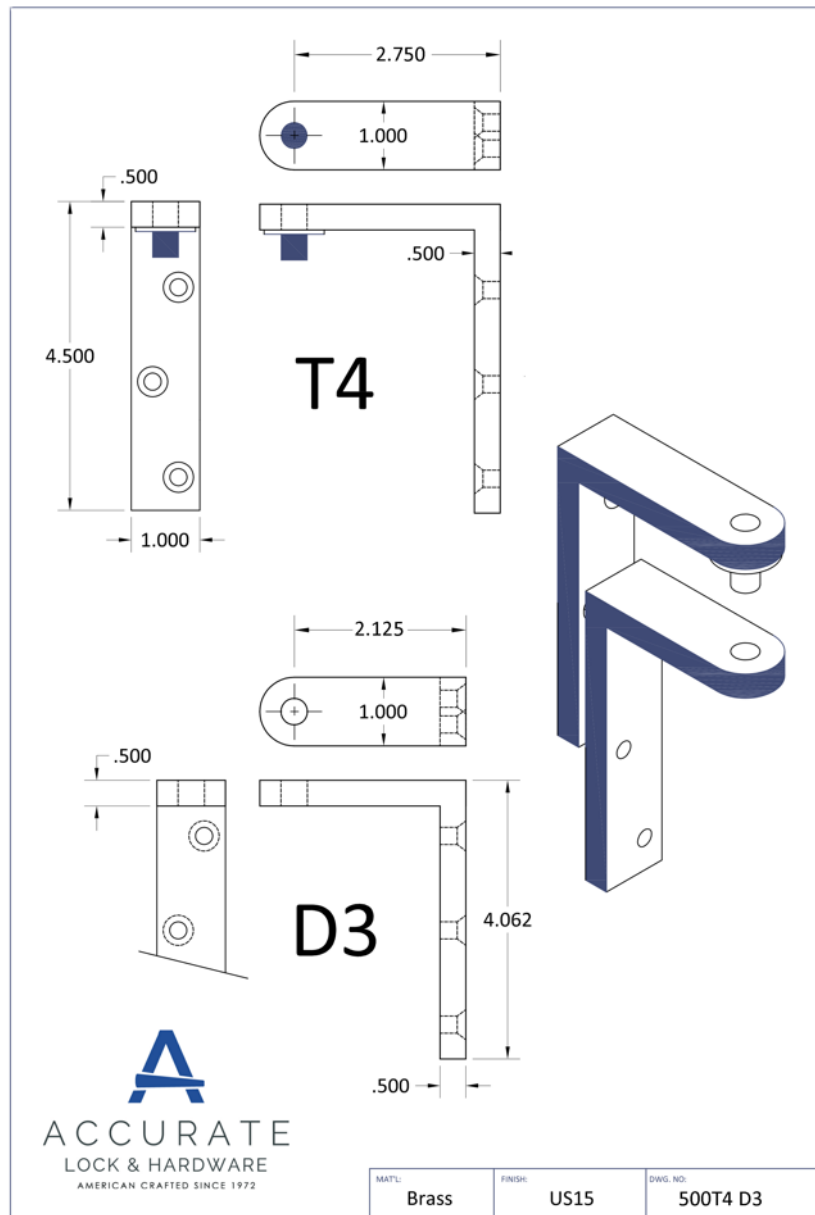


# Pivot Configurations

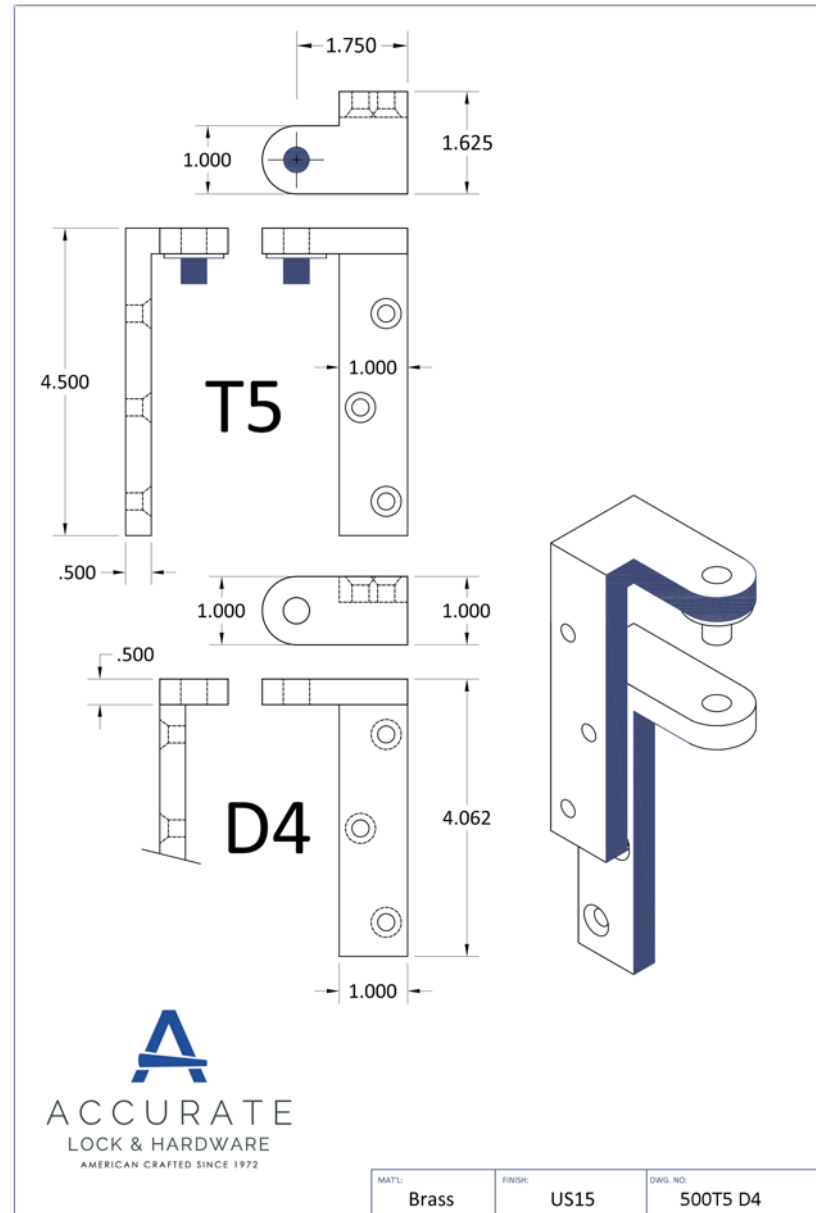
## T4, D3, D3, B2

For  $1\frac{3}{4}$ " thick doors, with  $\frac{3}{8}$ " offset

The top member is mounted vertically into the frame behind the door



# Pivot Configurations

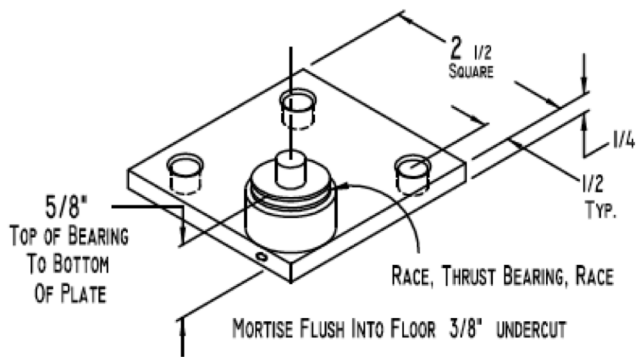


## T5, D4, D4, B3

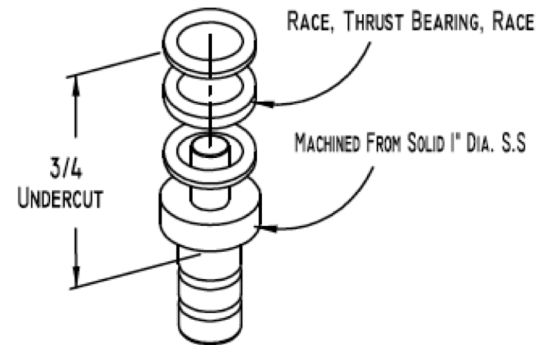
For  $1\frac{3}{4}$ " thick doors, with  $\frac{3}{8}$ " offset

The top member is mounted into the side jamb

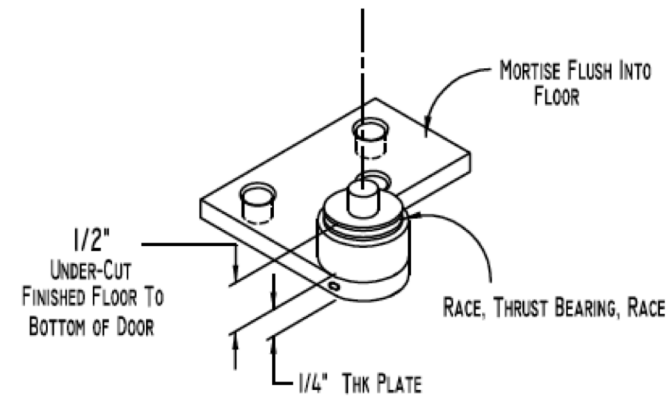
# Floor Mount Options



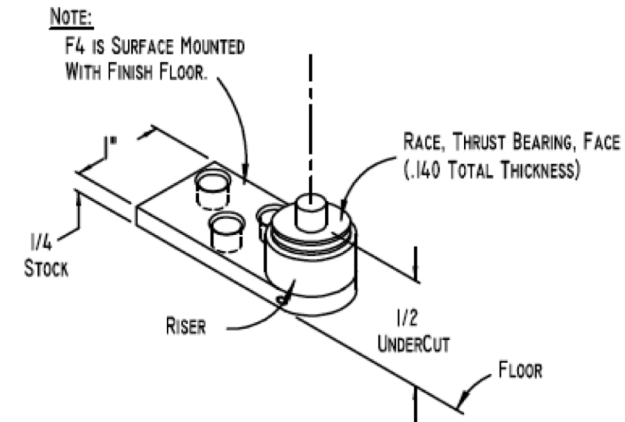
F1



F2 (STUD)



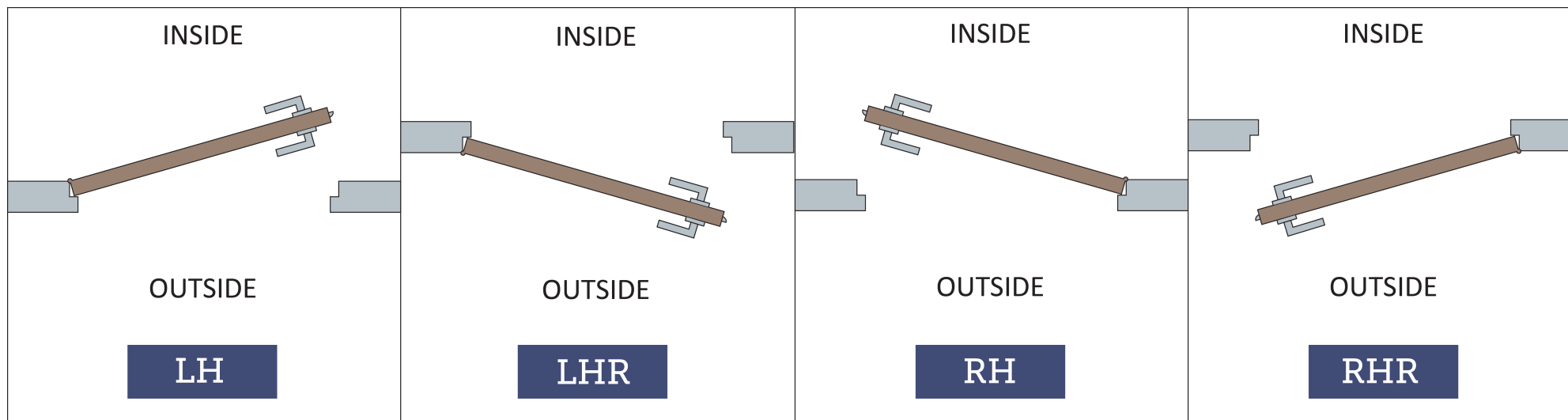
F3



F4

# HOW TO SPECIFY

## HANDING



## FINISHES

**GROUP 1:** US4, US4NL, US26D

**GROUP 2:** US3, US3NL, US26, US10B, US14, US15, US19

**GROUP 3:** BN, BB, TN, TB, DURO, ESN, US15A, US5

Pivots can also be ordered in Stainless Steel. Specify Finish Group 2T.

To view example of finishes visit: [Accurate Finishes](#).



# HOW TO SPECIFY

Qty	Configuration				Material Thickness	Handing	Finish	Door Thickness	Pivot Offset	Intermediate	Special Requirements / Conditions Applied Molding, Base Board, Mirror, etc.
	Top Member	Top Door	Bottom Door	Bottom/Floor Member							
Example:											
1	T1	D1	D1	B3	1/2"	RH	US15	1 3/4"	3/8"	i-T5D4	

**ACCURATE LOCK & HARDWARE**  
**MANUFACTURERS OF LOCKS AND**  
**CUSTOM ARCHITECTURAL HARDWARE**

1 Annie Place | Stamford, CT 06902

**P:** 203.348.8865

**F:** 203.348.5234

**E:** sales@accuratelockandhardware.com

**www.accuratelockandhardware.com**



**AMERICAN CRAFT**  
**— SINCE 1972 —**