



# ACCURATE LOCK & HARDWARE

AMERICAN CRAFTED SINCE 1972



## KNOB LATCHES

1000, 1003, 1016

# 1000 KNOB LATCH

## TECHNICAL DETAILS

**BACKSETS:** 2  $\frac{3}{4}$ " standard, 3" offered  
For door stiles 3  $\frac{7}{8}$ " wide and up.

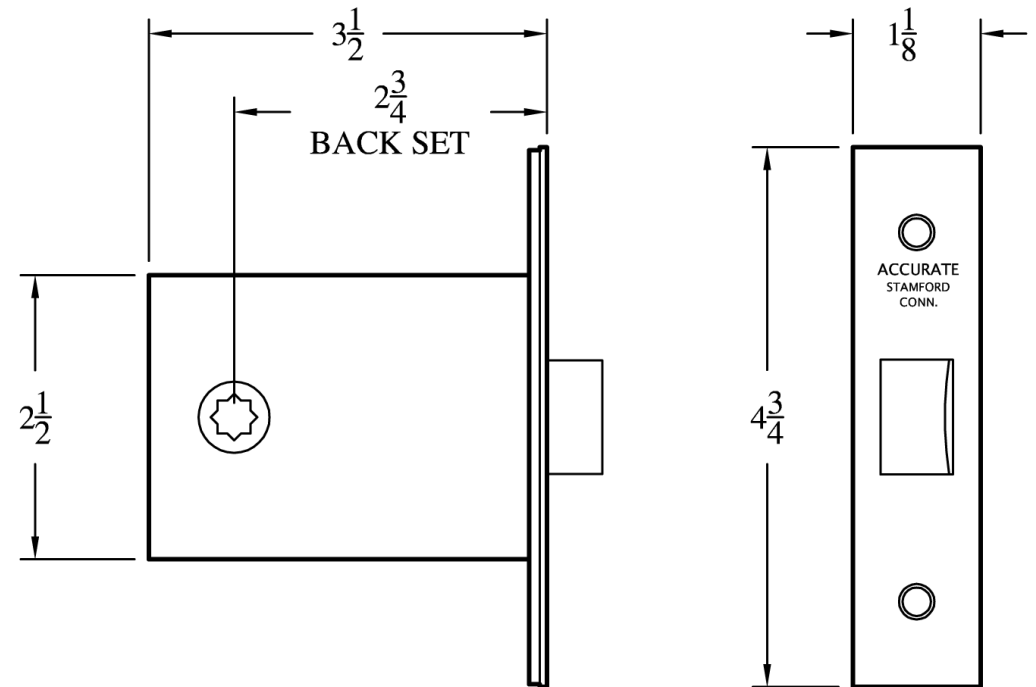
**LATCHBOLT:**  $\frac{1}{2}$ " throw

**HUB:** Available in different sizes to be compatible with various trims

**MATERIAL:** Bronze front and bolts – annealed gray iron case, japanned inside and outside

**FRONT:** Flat front, reversible – beveled front. To order, specify hand

**STRIKE:** Wrought brass or bronze



1000 Knob Latch Dimensions

# 1003 KNOB LATCH

## TECHNICAL DETAILS

### BACKSETS: 2 ½"

For door stiles 3 ½" wide and up.

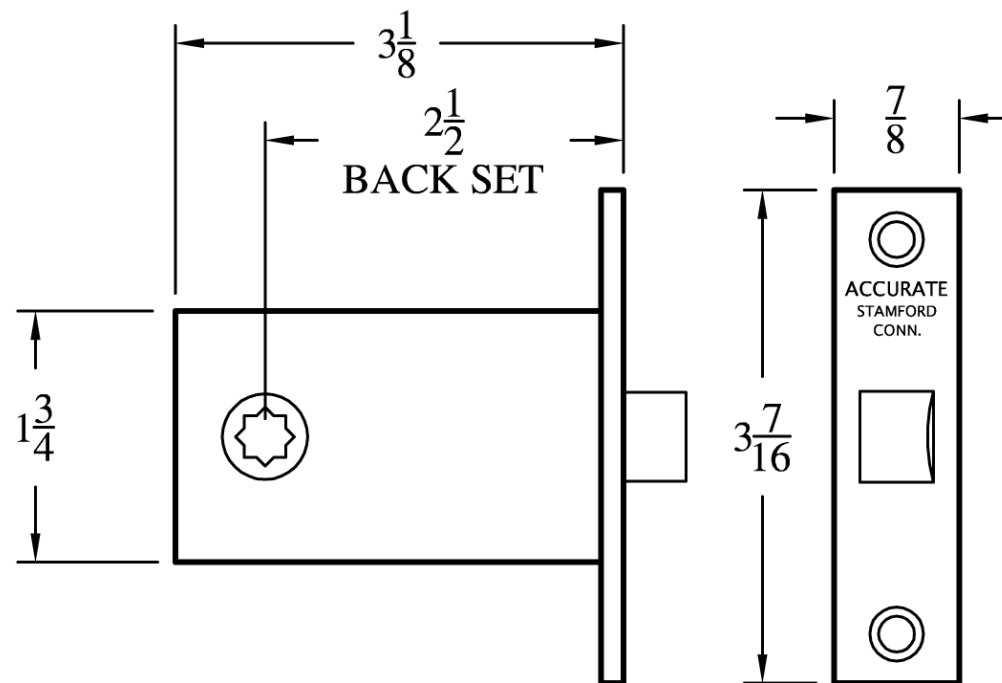
### LATCHBOLT: 7/16" throw

**HUB:** Available in different sizes to be compatible with various trims

**MATERIAL:** Bronze front and bolts – annealed gray iron case, japanned inside and outside

**FRONT:** Flat front, reversible – beveled front. To order, specify hand

**STRIKE:** Wrought brass or bronze. ASA strike available to order



1003 Knob Latch Dimensions

# 1016 KNOB LATCH

## TECHNICAL DETAILS

### BACKSETS: $2\frac{3}{4}$ "

For door stiles  $3\frac{13}{16}$ " wide and up.

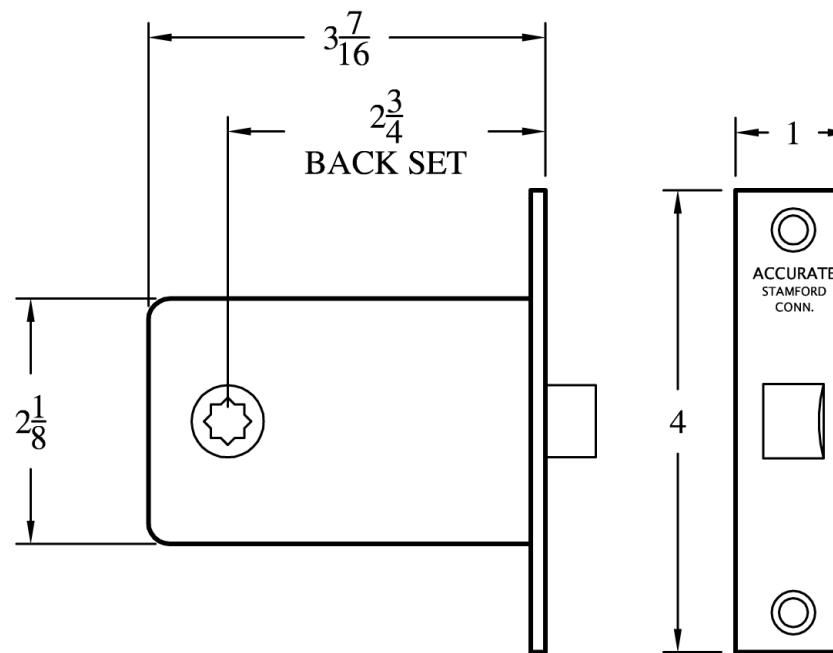
### LATCHBOLT: $7/16$ " throw

**HUB:** Available in different sizes to be compatible with various trims

**MATERIAL:** Bronze front and bolts – annealed gray iron case, japanned inside and outside

**FRONT:** Flat front, reversible – beveled front. To order, specify hand

**STRIKE:** Wrought brass or bronze



1016 Knob Latch Dimensions

**ACCURATE LOCK & HARDWARE  
MANUFACTURERS OF CUSTOM LOCKS  
AND ARCHITECTURAL HARDWARE**

1 Annie Place | Stamford, CT 06902

**P:** 203.348.8865

**F:** 203.348.5234

**E:** sales@accuratelockandhardware.com

**www.accuratelockandhardware.com**



**AMERICAN CRAFTED  
— SINCE 1972 —**