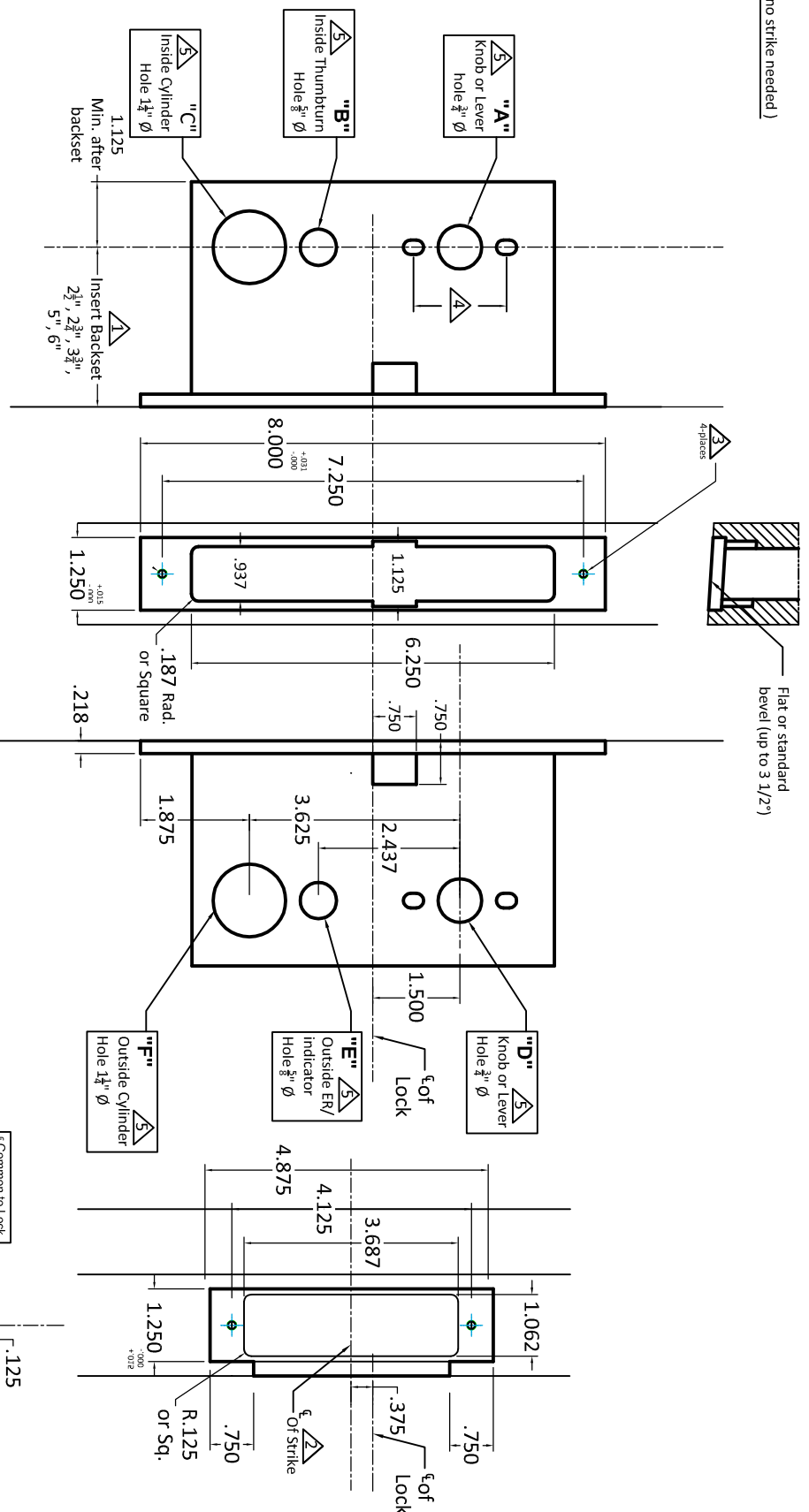


| Functions | A | B | C | D | E | F |
|--------------|---|---|---|---|---|---|
| 91000ADL USD | ● | ● | ● | ● | ● | ● |
| 91220USD | ● | ● | ● | ● | ● | ● |
| 91240USD | ● | ● | ● | ● | ● | ● |
| 9124RLUSD | ● | ● | ● | ● | ● | ● |
| 91250USD | ● | ● | ● | ● | ● | ● |
| 9125RLUSD | ● | ● | ● | ● | ● | ● |
| 91340USD | ● | ● | ● | ● | ● | ● |
| 91390USD | ● | ● | ● | ○ | ● | ● |
| 91420USD | ● | ● | ● | ● | ● | ● |
| 91430USD | ● | ● | ● | ● | ● | ● |
| 9143EUSD | ● | ● | ● | ● | ● | ● |
| 9144EUSD | ● | ● | ● | ● | ● | ● |
| 9145USD | ● | ● | ● | ● | ● | ● |
| 91455USD | ● | ● | ● | ● | ● | ● |
| 91460USD | ● | ● | ● | ● | ● | ● |
| 91480USD | ● | ● | ● | ● | ● | ● |
| 91490USD | ● | ● | ● | ● | ● | ● |
| 91530USD | ● | ● | ● | ● | ● | ● |
| 91490USD | ● | ● | ● | ● | ● | ● |
| 91560USD | ● | ● | ● | ● | ● | ● |
| 91580USD | ● | ● | ● | ● | ● | ● |
| 91590USD | ● | ● | ● | ● | ● | ● |
| 91600USD | ● | ● | ● | ● | ● | ● |
| 91670USD | ● | ● | ● | ● | ● | ● |
| 91690USD | ● | ● | ● | ● | ● | ● |

(no strike needed)

- Required Holes
- Optional Holes



Important Notes:

- 1) Insert backset here $2\frac{1}{2}$ ", $2\frac{3}{4}$ ", $3\frac{3}{4}$ ", 5", 6"
- 2) ASA strike mounted $\frac{3}{8}$ " Below centerline of lock
- 3) Prep for #12 wood or 12-24 machine screws (Lock and Strike)
- 4) Thru bolting holes **ONLY** if required. See trim manufacturers standard template for details. Accurate lock's accommodates $1\frac{1}{2}$ " to $1\frac{11}{16}$ " center to centers and up to $\frac{1}{4}$ " dia. post. If there are any additional questions about the thru-bolting, please contact our office.
- 5) Knob/Lever, Thumbturn and ER holes may vary from different trim manufacturers. Please refer to their templates to confirm these dimensions.

Additional Notes:

- a) **Responsibility:** Door and frame manufacturers are responsible for providing adequate construction or re-inforcement for proper installation of hardware shown.
- b) Please contact us if a double lip strike is needed - for a proper template
- c) See catalog / spec sheets for additional lock details



ACCURATE

LOCK & HARDWARE

AMERICAN CRAFTED SINCE 1972

Standard 9100USD - Upside Down
(Lever High) Template

All Backsets

T-ALH.9100.USD