



Computer Controlled Radio Transmitter Manual



AC117-01

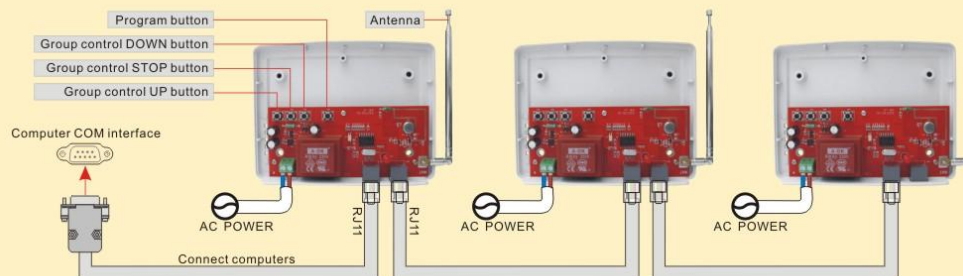
I. Specification:

- Compatible with all Performance Concepts remote controls
- Extendable antenna
- Can daisy-chain (5) AC117-01 together
- Multi-programmable operation
- SMT machine assembly, damp proof enclosure

II. Parameters

Model No.	Rated Voltage	Working Temp	Working Current	Loading Power	Frequency	Channel No.	Operation Mode
AC117-01	(Optional) 230VAC 50Hz 120VAC 60Hz	0°C~+70°C	≤ 20mA	≤ 20mW	433.92MHz	15 channel	Computer control /Manual

III. Wiring

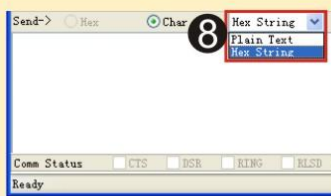
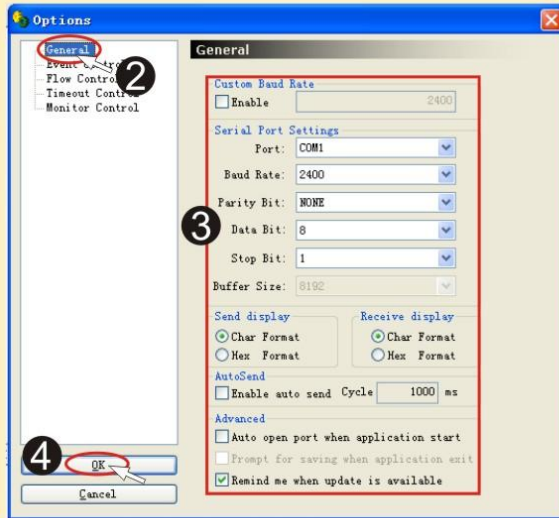


IV. Download and install

1. Install AccessPort software from Performance Concepts webpage or CD-ROM
 - Run AccessPort.exe
 - Or extract AccessPort.rar to your desktop using WinRar then run AccessPort.exe
2. Connect laptop to AC117 by first connecting USB-to-Serial adapter to Serial-to-RJ-11 adapter
3. Provide 110VAC power to AC117 and Red LED will indicate that the device is powered up.

V. OPTIONS

SETTING



UP



Fill control code in the textbox (Please reference UP code in the right control code list). Click on "send"

STOP



Fill control code in the textbox (Please reference STOP code in the right control code list). Click on "send"

DOWN



Fill control code in the textbox (Please reference DOWN code in the right control code list). Click on "send"

UP control code:

- Group control: FF 10 11 00 DD
- 1st group: FF 10 11 01 DD
- 2nd group: FF 10 11 02 DD
- 3rd group: FF 10 11 03 DD
- 4th group: FF 10 11 04 DD
- 5th group: FF 10 11 05 DD
- 6th group: FF 10 11 06 DD
- 7th group: FF 10 11 07 DD
- 8th group: FF 10 11 08 DD
- 9th group: FF 10 11 09 DD
- 10th group: FF 10 11 0A DD
- 11th group: FF 10 11 0B DD
- 12th group: FF 10 11 0C DD
- 13th group: FF 10 11 0D DD
- 14th group: FF 10 11 0E DD
- 15th group: FF 10 11 0F DD

STOP control code:

- Group control: FF 10 11 00 CC
- 1st group: FF 10 11 01 CC
- 2nd group: FF 10 11 02 CC
- 3rd group: FF 10 11 03 CC
- 4th group: FF 10 11 04 CC
- 5th group: FF 10 11 05 CC
- 6th group: FF 10 11 06 CC
- 7th group: FF 10 11 07 CC
- 8th group: FF 10 11 08 CC
- 9th group: FF 10 11 09 CC
- 10th group: FF 10 11 0A CC
- 11th group: FF 10 11 0B CC
- 12th group: FF 10 11 0C CC
- 13th group: FF 10 11 0D CC
- 14th group: FF 10 11 0E CC
- 15th group: FF 10 11 0F CC

DOWN control code:

- Group control: FF 10 11 00 EE
- 1st group: FF 10 11 01 EE
- 2nd group: FF 10 11 02 EE
- 3rd group: FF 10 11 03 EE
- 4th group: FF 10 11 04 EE
- 5th group: FF 10 11 05 EE
- 6th group: FF 10 11 06 EE
- 7th group: FF 10 11 07 EE
- 8th group: FF 10 11 08 EE
- 9th group: FF 10 11 09 EE
- 10th group: FF 10 11 0A EE
- 11th group: FF 10 11 0B EE
- 12th group: FF 10 11 0C EE
- 13th group: FF 10 11 0D EE
- 14th group: FF 10 11 0E EE
- 15th group: FF 10 11 0F EE

Note: Crestron requires a \x before each two digits of the string commands.
i.e. \xFF\x10\x11\x00\xDD

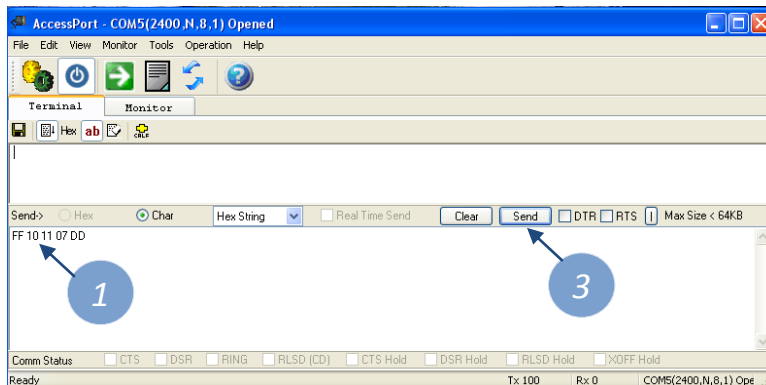


Performance Concepts RS232 to RF Integration Device Programming Instructions

After the shades and draperies have been installed and are working as you want them to with the correct channels on the various keypads/transmitters, reference these instructions so that you can pair the RS232-RF device to the shades and draperies:

Pairing the RS232-RF Device to a Roller Shade utilizing a laptop PC:

1. Determine the **UP** control code channel you will use (e.g. FF 10 11 07 DD) and type that into the lower text box so that it is ready for you to click the **SEND** button
 - o **CAUTION – Never assign the group control FF 10 11 00 DD in this step as doing so will prevent you from creating sub-groups.**
 - The commands FF 10 11 00 DD, FF 10 11 00 CC, and FF 10 11 00 EE should only be used as master override channels (after pairing has been completed) and are never utilized during the pairing step.
2. Press and hold **STOP** button of the existing transmitter or keypad until you hear 5 beeps
3. During the 5 beeps, send the correct **UP** control code (e.g. FF 10 11 07 DD) by clicking **SEND**
4. If the RS232-RF signal was received by the roller shade motor, you will hear 3 beeps.
5. Ensure that the RS232-RF device is working by sending **UP**, **STOP**, and **DOWN** control codes. If the device is not working properly, start over.

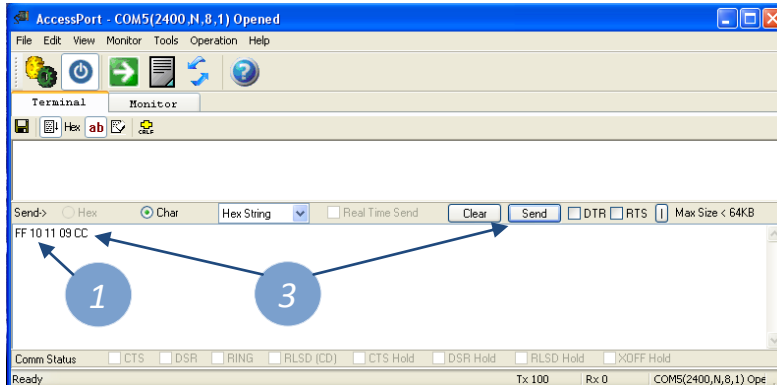


Note: Crestron requires a \x before each two digits of the string commands.
i.e. \xFF\x10\x11\x00\xDD



Pairing the RS232-RF Device to a Draper Track utilizing a laptop PC:

1. Determine the **STOP** control code channel you will use (e.g. FF 10 11 09 CC) and type that into the lower text box so that it is ready for you to click the **SEND** button
2. Press and hold **STOP** the **PROGRAMMING** button on bottom of motor until the RED LED flashes
3. While the RED LED is flashing, send the correct **STOP** control code (e.g. FF 10 11 09 CC) and within 5 seconds, **SEND** the correct **UP** control code (e.g. FF 10 11 09 DD) by changing the last two letters of the string from CC to DD.



4. Ensure that the RS232-RF device is working by sending **UP**, **STOP**, and **DOWN** control codes. If the device is not working properly, start over.