

SIDELINER™

Quick Setup Guide



*Dedicated to sideline
athlete care and privacy.*

Questions: contact Kinematic Sports at 205-722-5173



Contents

Frame	Fully assembled visible
Cross-plate	Unassembled in smaller box
Cover	Smaller box
Hardware	Plastic bag
<i>Some units will have their travel duffel sent separately</i>	

Hardware Included



8 Hand Knobs



Assembly

People: 1-2

Total Time: 15 min

Instructions

1. Remove cross plate pieces from inner box.
2. Assemble the cross plate.
 - 2a. Layout the pieces of the cross plate as pictured.
 - 2b. Put the studs of center plate through the matching holes on the cross member wing pieces. *(Note: the final cross member will be in a v-shape, and the two wing pieces will point the same way.)*
 - 2d. Place a hand knob on the end of the 4 studs.
 - 2e. Tighten the connection by screwing knob on to the end of the stud.
 - 2f. Repeat for the other three connections.
3. Remove frame and endcaps from box.
4. Unscrew and remove four hand knobs from studs between central hubs

Important Pieces

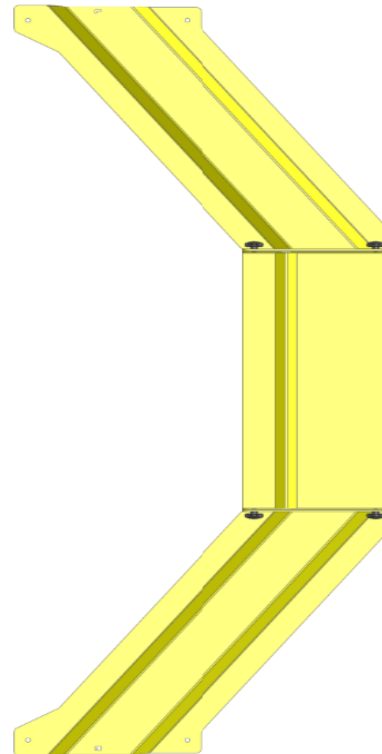
Hand Knobs (x8)



(Step 2a) Starting Layout:



Connection Detail:

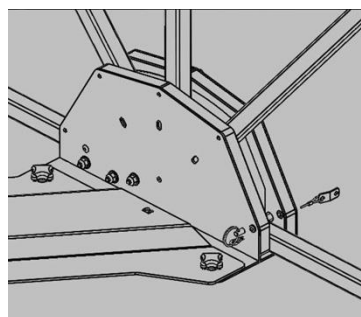
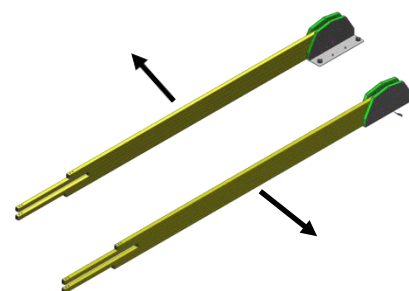
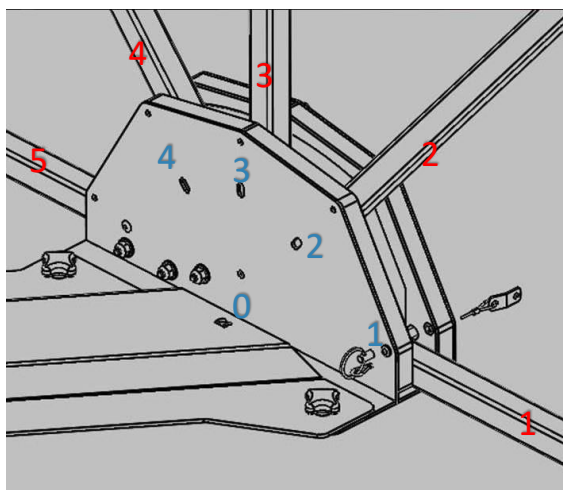


Assembly

Instructions

5. Separate the two hubs from one another by pulling the left side hub up and away from the studs of the right hand hub.
6. Separate the frame by pulling from the center point of the crossbars in one motion to unfold the frame.
7. Place the cross plate onto its Left and Right attachment points by using the image provided.
8. Place hand knobs on studs and tighten to secure the cross plate at the attachment point.
9. Place pins into the center of each cross bar, and the corners of cross bar #3.

Red: Crossbar
Blue: Hole



Assembly

Instructions

10. Remove the cover from packaging and unroll.
11. Find zippered sleeves (center of underside of cover) and attach at locations shown on right.
12. Attach one pair of Velcro loops (behind doors) to cross bar #2, and the other pair to cross bar #4.
13. Slowly pull cross bar #1 slowly 180° up and over the cross plate, and place on ground.
14. Pull cross bars #2, 3, and 4 up to the operating positions. Remove the pin from hole #0 and place into hole #3. This will lock cross member #3 in the operating position. (If needed for extra stability, move this pin on both sides.)
15. Attach the Velcro seam of the cover to the frame by wrapping the cover around the frame from the outside to the inside.
16. Adjust the cover so that all corners of cross bar #1 and cross bar #5 are touching the ground.
17. Remove hub pins from hole #3 and place them in hole #1. This places the unit in the secure operating position.
18. To move the SidelinER to the ready position, remove hub pins from hole #1 and place them in hole #0.
19. **REMOVE ALL LOCKING PINS AND ENSURE THEY ARE IN CENTRAL LOWER HOLE (#0) PRIOR TO COLLAPSING YOUR SIDELINER.**
20. From the outside, lift cross bar #1 by the side to collapse the SidelinER to the ready position.

The transition between the ready and operating positions can be performed comfortably in under 10 seconds.

SidelinER – Ready Position

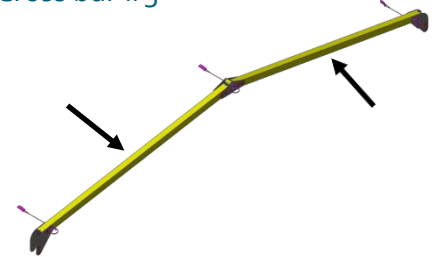


SidelinER Quick Setup Guide

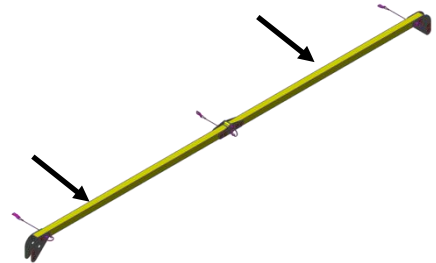
Important Notes

Arrows indicate where to attach zippered sleeves.

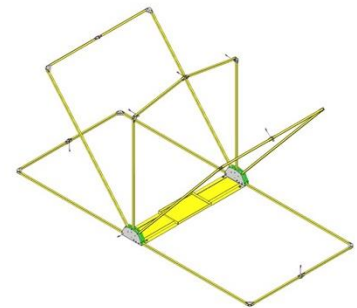
Cross bar #3



Cross bars #2, 4



Cross bars in the operating position:



Attachment on cross bars #1, 5



Collapsing SidelinER for Transport

People Required: 1

Time: 2 minutes

To collapse your SidelinER:

1. Place your SidelinER into the operating position.
2. Remove all cross bar pins from the center and corners of the cross bars.
3. Pull down on the cross bars until they begin to fold downward as shown.
4. Collapse the SidelinER into the ready position.
5. Bring the hubs together.
6. Return the hand knobs to the studs and secure.
7. Place SidelinER frame and cross plate into the travel bag.

IN THE EVENT OF DAMAGE:

Contact Kinematic Sports at 205-722-5173 to begin the repair process for your SidelinER.

SidelinER in 'operating' position



Remove pins and pull cross bars down slightly



Collapse to a 'ready' position



Bring hubs together and secure with hand knobs

