

NorthQ

Q-Power Installation Guide

v1.0

Thank you for buying a NorthQ product. Our devices gives you and your family the opportunity to experience **a new way of living**.

This user manual helps you to get **Q-Power** installed. The installation can be performed using PC, Tablet or Smart Phone.

In order to use the **Q-Power** with **HomeManager** you need to have a NorthQ gateway (**Q-Stick**, **Q-Gate** or **Q-Gate Pro**).



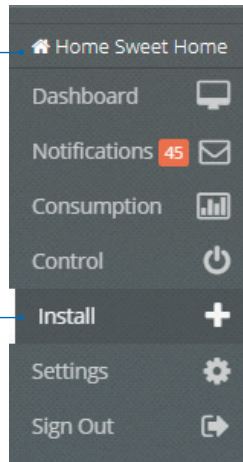
1.Q-Power Installation

The **Q-Power** is the device which is attached to your existing **mechanical** or **electronic** power meter. It measures consumption so you can visualize it in your NorthQ **HomeManager** account.



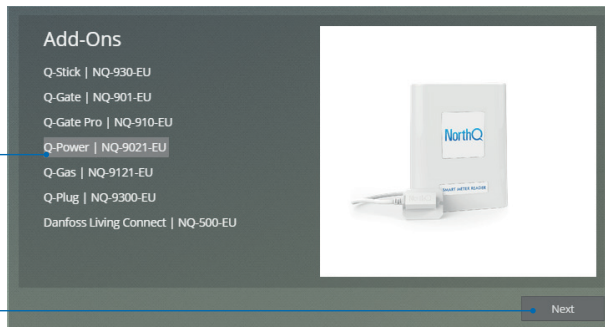
1 Go to **HomeManager** menu

2 Select **Install**



3 Select **Q-Power**

4 Click on **Next**



5 Insert the **batteries**

6 Press the **button 3 times**


7 Click on **Start Pairing**

Q-Power (NQ-9021-EU)

Your gateways: 1206ac1000xxx


● online ● offline ● pending status

The first step for installing an add-on device is pairing it with a gateway. Please follow the steps below in order to pair it with any one of your gateways.



1. Insert the batteries.

Make sure the batteries are placed correctly and the device is on. You can now proceed with pairing the device with your gateway by first pressing the START PAIRING button.



2. Press the Q-Power button 3 times.

If the gateway can not find the Q-Power within 2 minutes, please repeat this step.

3. Once the device is successfully paired, press the NEXT button to continue the installation.

Start Pairing

8 Check if device is **paired**


9 Click on **Next**

Q-Power (NQ-9021-EU)

Your gateways: 8206ac1000xxx


● online ● offline ● pending status

The first step for installing an add-on device is pairing it with a gateway. Please follow the steps below in order to pair it with any one of your gateways.



1. Insert the batteries.

Make sure the batteries are placed correctly and the device is on. You can now proceed with pairing the device with your gateway by first pressing the START PAIRING button.



2. Press the Q-Power button 3 times.

If the gateway can not find the Q-Power within 2 minutes, please repeat this step.

3. Once the device is successfully paired, press the NEXT button to continue the installation.

✓ Q-Power successfully paired

Next

10 Check if the **Q-Power** is found

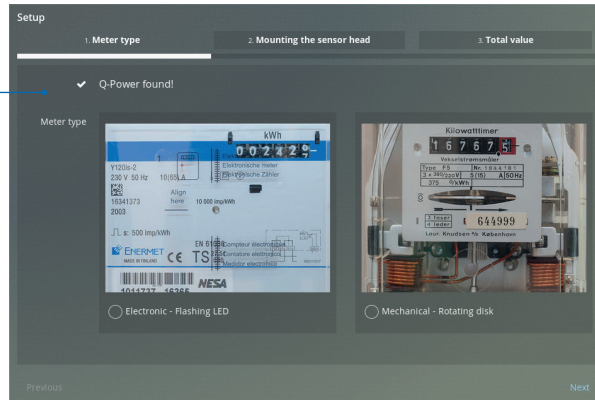
If not found, please check our **FAQ section** on **northq.com**

11 Select your **meter type**

Electronic meters have a **flashing LED**, **mechanical** meters have a **rotating disc**.

Follow the instruction related to your **meter type: electronic (e)** or **mechanical (m)**.

HomeManager will display pictures of various types of meters.

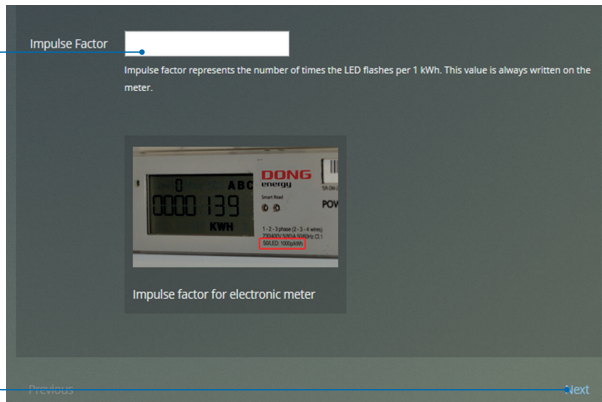


Following steps are for **electronic meters** only.

12e Enter the **impulse factor** for your meter

13e Click on **Next**

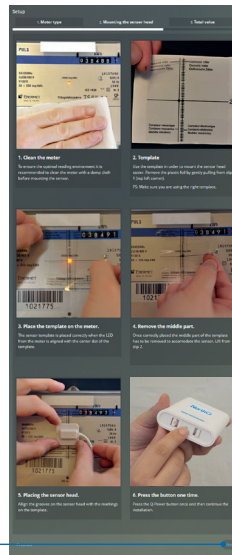
On an **electronic meter** the impulse factor is the number of times the LED flashes per kWh. Typically it is either 1000 or 10.000 per kWh - **look for a number of this size on the meter.**



14e Install the **sensor head** on the meter

Please follow the online instructions. Remember to scroll down to see all the instructions and images!

15e Click on **Next**



16e Enter the **current consumption** from your meter

You **do not** have to enter leading zeros.

17e Click on **Finish**

WELL DONE!

You have finished installing your **Q-Power** on **electronic meter**. Your **HomeManager** should now be receiving data from it. Remember that the **Q-Power** transmits data every 15 minutes, so it may take some minutes before you see your first reading.

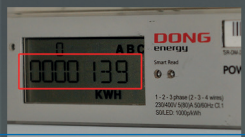
Setup

1. Meter type 2. Mounting the sensor head 3. Total value

Insert the total meter value.

Total value

The total meter value is written on the meter and represent the electricity consumption so far.



Total value for electronic meter example.

Previous Finish

1 Q-Power Installation

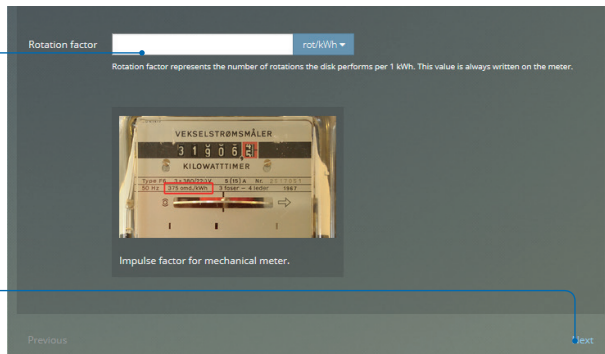
Following steps are for **mechanical meters** only.

12m Enter the **rotation factor** for your meter

13m Click on **Next**

HomeManager will display pictures of various types of meters.

On a **mechanical meter** the rotation factor is the number of times the disc rotates per kWh. This varies but can be found on the meter - **look for a number marked "rot./kWh"**.



14m Install the **sensor head** on the meter

Please follow the online instructions. Remember to scroll down to see all the instructions and images!

15m Click on **Next**



16m Enter the **current consumption** from your meter.

You **do not** have to enter leading zeros.

17m Click on **Finish**

WELL DONE!

You have finished installing your **Q-Power** on **mechanical meter**. Your **HomeManager** should now be receiving data from it. Remember that the **Q-Power** transmits data every 15 minutes, so it may take some minutes before you see your first reading.


Setup

1. Meter type 2. Mounting the sensor head 3. Total value

Insert the total meter value.

Total value

The total meter value is written on the meter and represent the electricity consumption so far.



Total value for mechanical meter example.

Previous Finish

NorthQ

A New Way of Living

NorthQ ApS

Strandvejen 157 | 2900 Hellerup | **Denmark**

email: support@northq.com | **website:** www.northq.com