

# *The New Work Order*

*The Foundation for Young Australians*



Philanthropy  
Summit 2019

*The Future of Trust*

*Te pono, te tika, te māramatanga  
me te aroha anō o tētehi ki tētehi*



BLOOMSBURY  
ASSOCIATES



DEVON  
FUNDS.



blackbaud  
power your passion

P I M C O



fisher funds

FLUXX





**The New Work Order | fya**

# **The Forces of Change**



**Flexibility**



**Globalisation**



**Automation**





**So long to the linear  
world of work...**





**Digital Literacy**  
**212%**



**Bilingual Skills**  
**181%**



**Critical Thinking**  
**158%**



**Creativity**  
**65%**

# By 2030 what we do in every job will change



**30%  
more time  
learning on  
the job**



**Almost  
100%  
more time  
solving  
problems**



**26%  
more time  
engaging in  
self directed  
work**



More educated yet

**50%**

of 25 year olds  
are not working  
full-time

35+ hours per week



## **BARRIERS**

### **The barriers young people identified to full-time work**



**Not enough work experience**

**Not enough jobs**

**Lack of appropriate education**

**Lack of career management skills**

# **The Solutions**

## ACCELERATORS

# The accelerators to full-time work



**Enterprise skills**

**Relevant paid employment**

**Future focussed clusters**

**An optimistic mindset**

## 7 Job Clusters



Coordinators



Artisans



Generators



Designers



Technologists



Informers



Carers





## New Zealand's 6 Job Clusters

AlphaBeta + TEC analysed 1 million job ads...

1. Inventors
2. Organisers
3. Operators
4. Healers
5. Engagers
6. Crafters

# Career Education + Management







## 7 Job Clusters in South West Victoria



Artisans



Coordinators



Designers



Generators



Informers

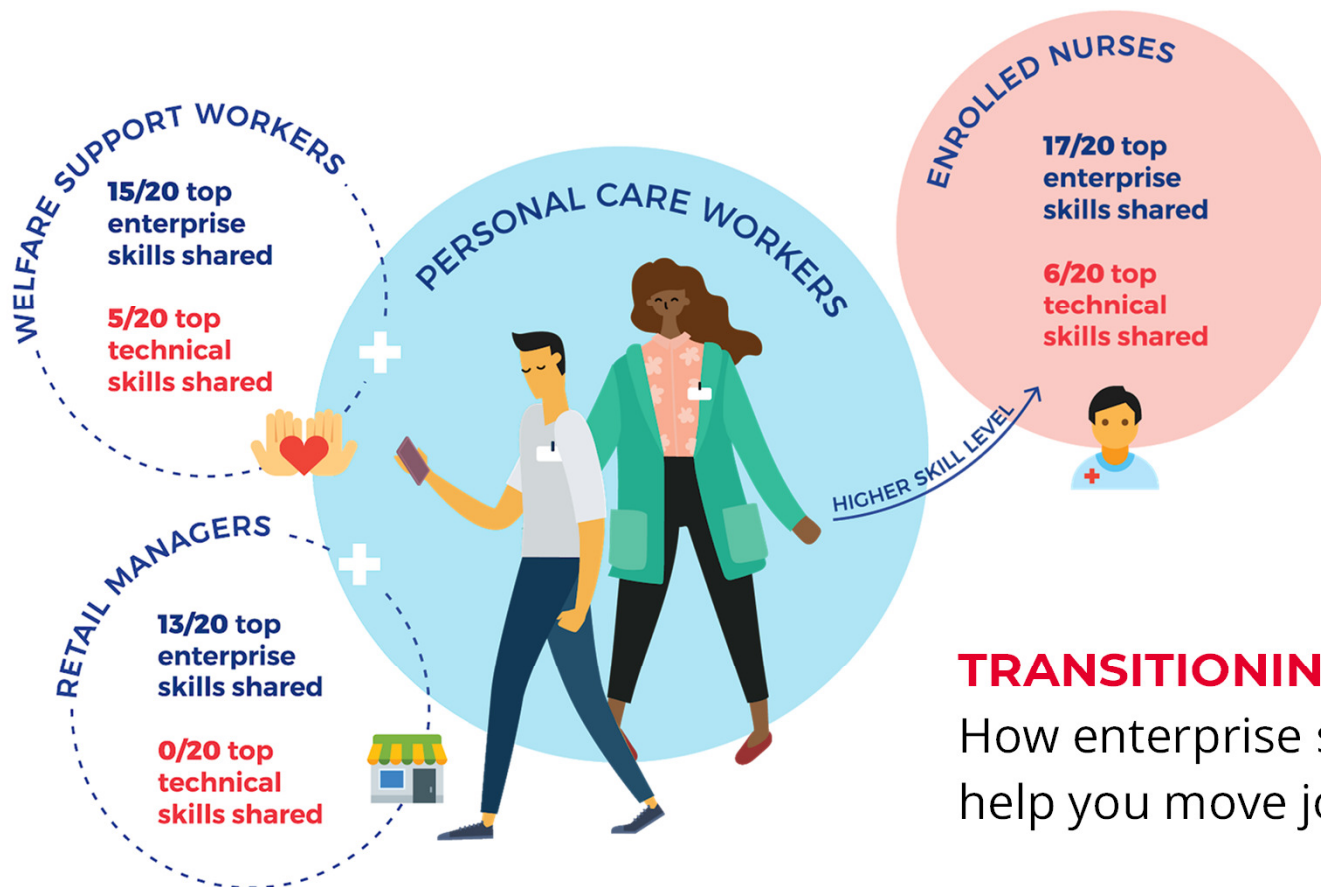


Carers



Technologists





## TRANSITIONING JOBS

How enterprise skills can help you move jobs



**Responsive  
Training System**



**Micro-  
credentials**



**Industry  
Involvement**



**We all have a role to play in  
preparing for the new work order**





**Want to find out more on  
our research, initiatives and  
partnership opportunities?**

**[fya.org.au](http://fya.org.au)**

The logo for YLab., featuring the text 'YLab.' in a white, sans-serif font, enclosed within a white rectangular border. The background of the entire right panel is a vibrant, abstract image with horizontal bands of blue, purple, and pink, overlaid with a wavy, textured pattern. A large, detailed image of the moon is positioned to the right of the YLab. logo.

**YLab.**

**Want to design the future  
with young people?**

**[ylab.global](http://ylab.global)**



# Thank you

Brought to you by



Philanthropy New Zealand  
Sponsors

