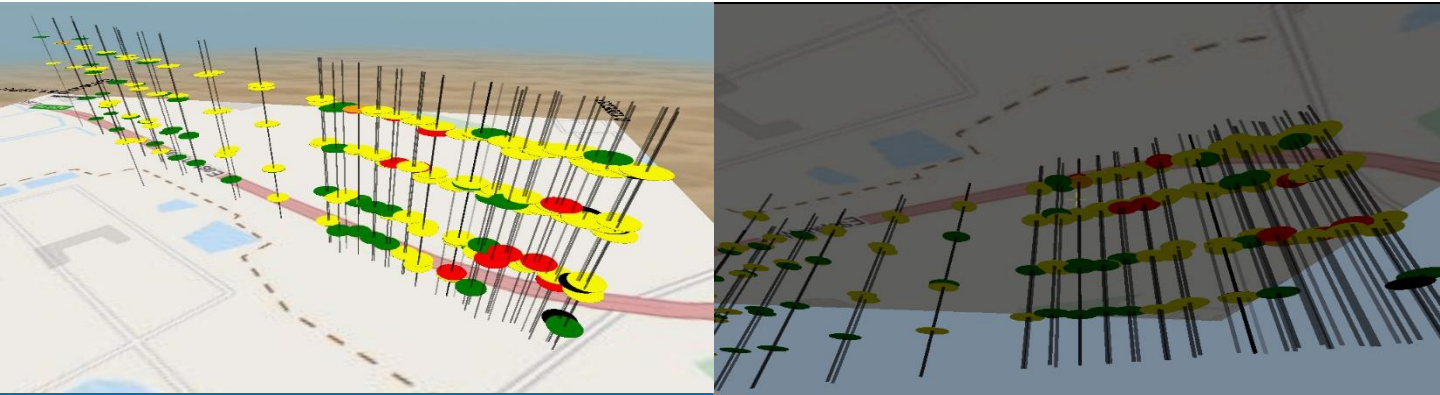
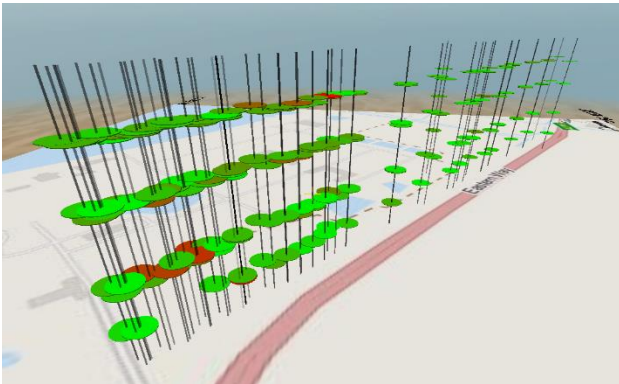
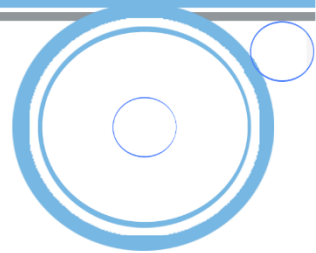


Soil Contamination Data

Hotspots vs Heatmaps



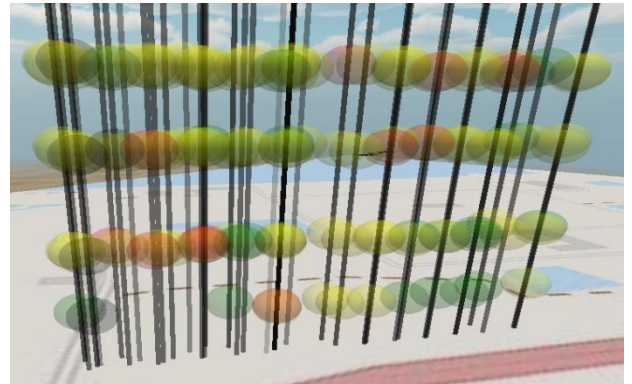
Daden worked with soil contamination specialist CrownBio to find a better way of visualising the soil contamination plots that they created based on their contamination surveys. The company had traditionally used heat-maps but these had two significant problems – extrapolating between readings was dangerous given how localised contamination could be, and it was hard to show both depth and positional data.



Disc Plot

We initially plotted the data under the map as shown top-right. However whilst literally correct this was found to be hard to read – people preferred to look down not up. So we therefore switched to plotting the data above the map – although still with depth going down.

Disc size was chosen to reflect a high confidence level for a consistent reading, and a colour look-up table to map contamination levels to colour.



Spherical Plot

A next step was to use spheres instead of discs as contamination is likely to be spherical and not constrained vertically. The spheres were also made semi-transparent so that a more natural of blending of contamination levels could be suggested.