

FOR LEASE

1145 Eugenia Avenue
Carpinteria, CA 93013



Lease Rate: \$1.85 NNN

Lease Type: NNN (\$.75/ Sq. Ft.)

Suite 202: 2,615 Sq. Ft.

Parking: 3.5/1000

Elevator: Yes

Available: Now

Term: 2+ Years

C.S.O: 2.5%

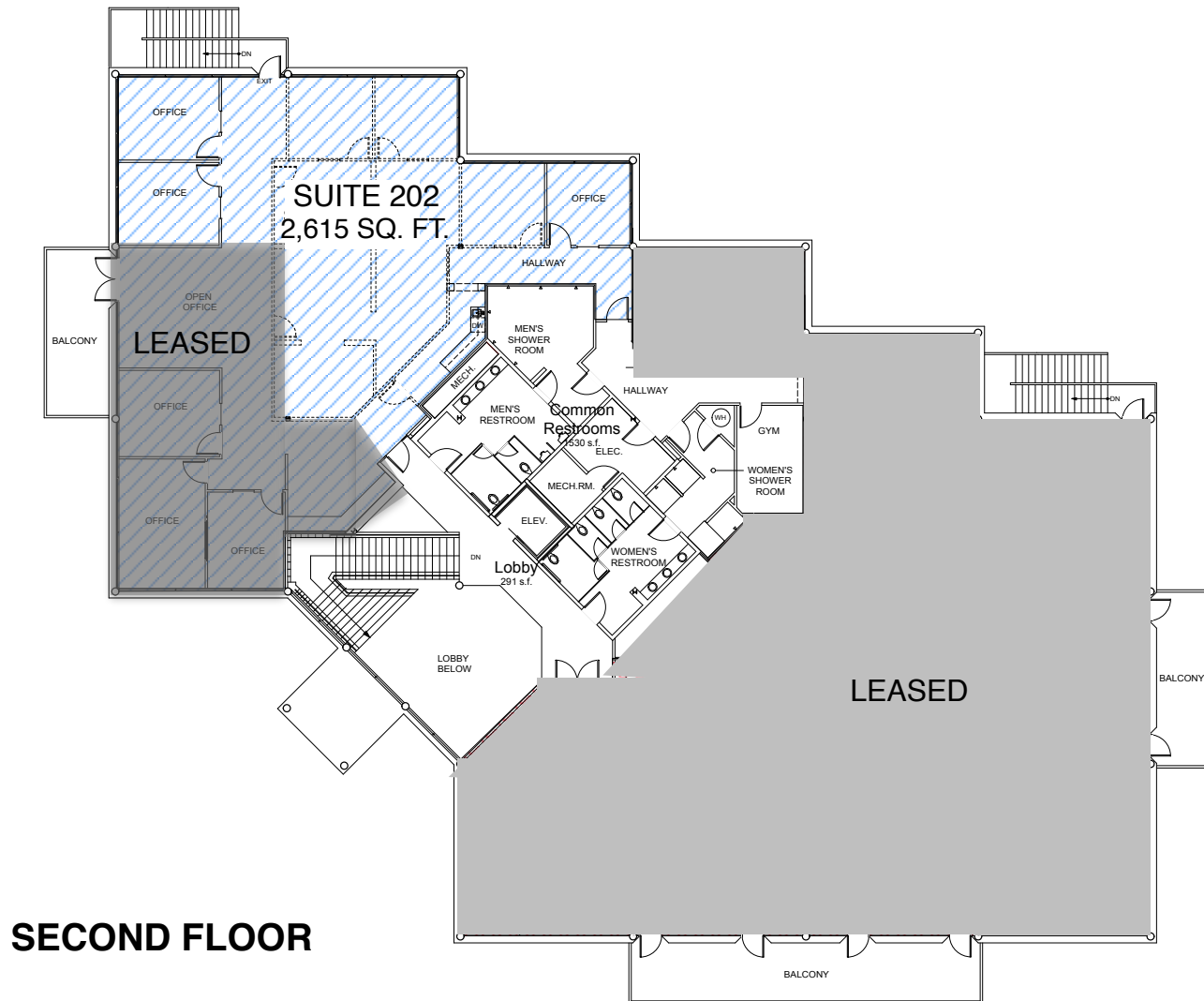
Comments:

Second floor space available. Includes a mixture of private offices and open space. Beautiful lobby entrance to building with high ceilings and skylights. The property has abundant parking, and has frontage along Linden Avenue, providing tenants with convenient access to the many restaurants and amenities on Linden Avenue. The space also includes common area restrooms with showers.

Information is deemed reliable: although we have no reason to doubt its accuracy, it is not guaranteed.

FOR LEASE

1145 Eugenia Avenue
Carpinteria, CA 93013



SECOND FLOOR