

PAVEMENT PRESERVATION PROJECT

July 26th - 28th

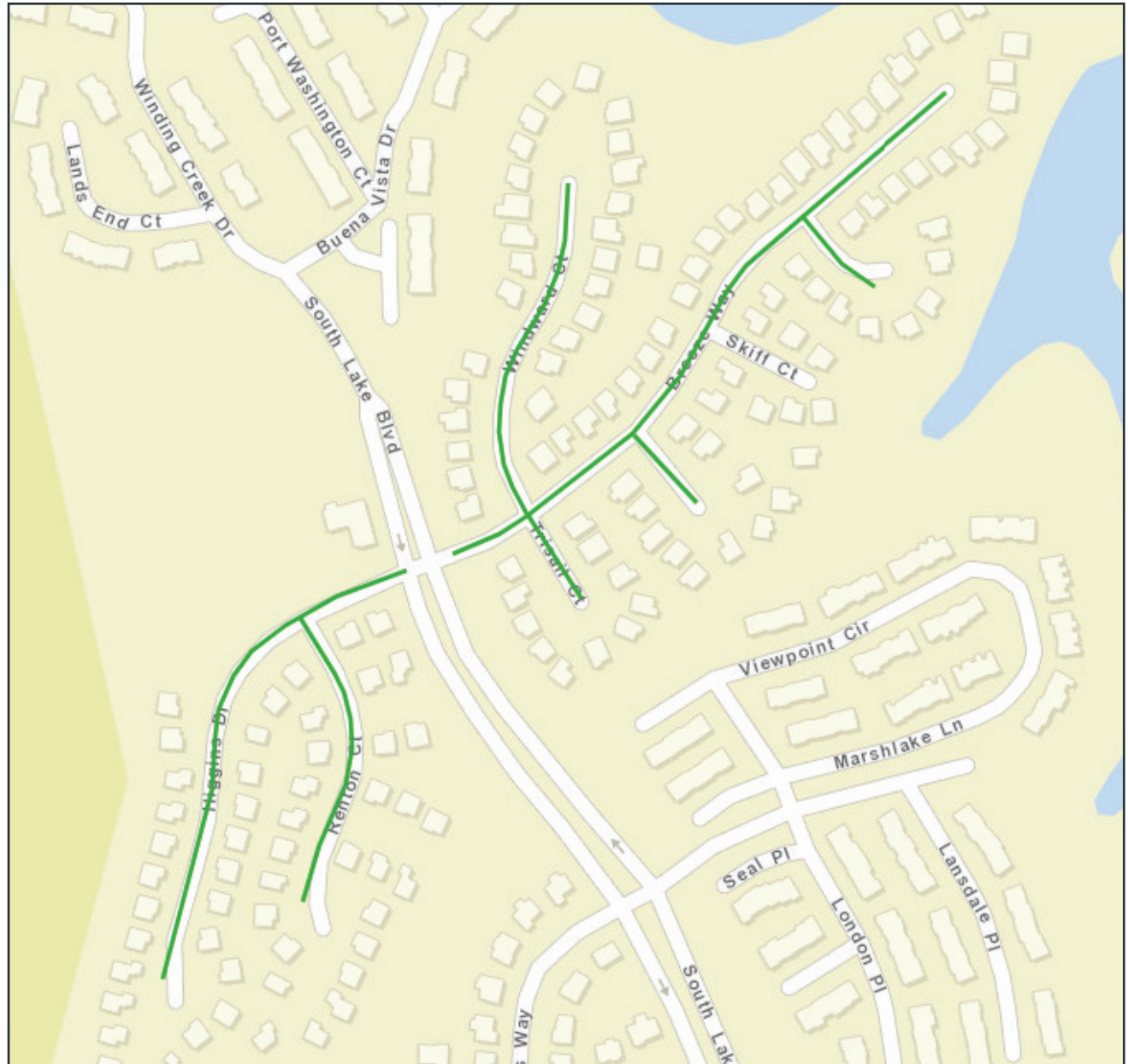
Crews work between 7am and 6pm Monday-Friday.

Residents will receive a notification hand-out two to three days prior to work on their street.

Please note that dates and times may change due to rain or other circumstances.

Thanks in advance for your cooperation as we work around your neighborhood.

An interactive map of the community streets that will receive pavement preservation treatment is provided by VDOT at: VirginiaDOT.org/NOVApaving



Driving, Parking and Getting Around

Notifications: We will distribute informational notices to each home at least two days prior to work. If there is on-street parking, No Parking signs will also be posted to communicate information about dates and parking restrictions.

Parking & Driving Restrictions: You'll always have access to your home, however you may not be able to get back into your driveway or regular parking spot if you have to cross wet slurry to get there. Also, short cul-de-sacs may need to be closed for several hours for application and drying. Curing takes 1-4 hours, so a vehicle parked nearby after work will be OK to drive into your regular spot by dark. Orange cones will mark off the work zone and where you cannot drive.

If you need to travel in and out of your driveway on the date listed and cannot leave prior to the start time, especially in cul-de-sacs, we recommend parking your vehicle within walking distance out of the work zone to ensure we don't hold you up.

On Site Assistance: If you need immediate assistance while crews are working in your area, please call the supervisor listed on the handout notice. They will be able to help you with immediate needs on site. This includes helping you if you will have a contractor coming or a delivery on the date work is to be performed.

Important Things to Know About Slurry Seal

Different Texture: New Slurry Seal has a different road texture than new asphalt, (especially the first few days after it's applied) but this will be less noticeable as the surface settles in. This can take a couple of weeks to a couple of months depending on the amount of traffic on that particular road. Afterwards, you will likely not notice any tangible difference in the look and feel of the road.

Fine Gravel: Slurry Seal's ability to provide a strong road surface with improved stopping characteristics is due to very small gravel embedded in the slurry mix. (This is also why slurry has a slightly different road feel than asphalt.) It's normal for some of this fine gravel to come loose in the initial few weeks after application. In addition, finely crushed aggregate will be spread to protect the road and vehicles at intersections or other areas where crossing wet slurry is needed. When we return to perform our post-project check, usually two to three weeks after application, we'll assess the amount of material on the road and perform a vacuum sweep if necessary.

Requires Caution: Slurry seal goes on wet. Most important to the quality of the final product will be to refrain from driving on the newly applied slurry seal until it has dried. Driving on wet slurry is the same as leaning against wet paint. Orange cones will clearly mark the areas that should not be walked or driven on. This is usually about two hours. If you must cross wet slurry to get in or out of your home, call the supervisor on your handout notice and they will spread aggregate to help protect your vehicle, drive, and the road. It's recommended that residents be careful driving on the new slurry—no hard braking or turning wheels while sitting still for a couple of days.

Application Is A Process: Pavement preservation treatments like slurry seal go through several stages to apply and to reach their final surface profile. **Drying**, within the first 1 to 4 hours, after which the road can be driven on carefully. **Curing**, within the first 72 hours, after which normal conservative driving can resume. **Settling in** within the first several weeks to several months. This is when fine gravel will ravel off and any initial surface marks will dissipate. Since it's designed to be applied "on-the-fly" and marring will occur, it has self-repairing characteristics. Most scuffs will disappear as the surface settles in and any color disparities will normalize.

For more tips and what to expect, please visit neighborhoodslurry.com

Questions? Comments? We're here to help. Please call Matt at 804-716-7860.

SLURRY PAVERS, INC.