



OUR LADY
OF THE LAKE

Integrating SDOH and Health Equity Into Nursing Practice

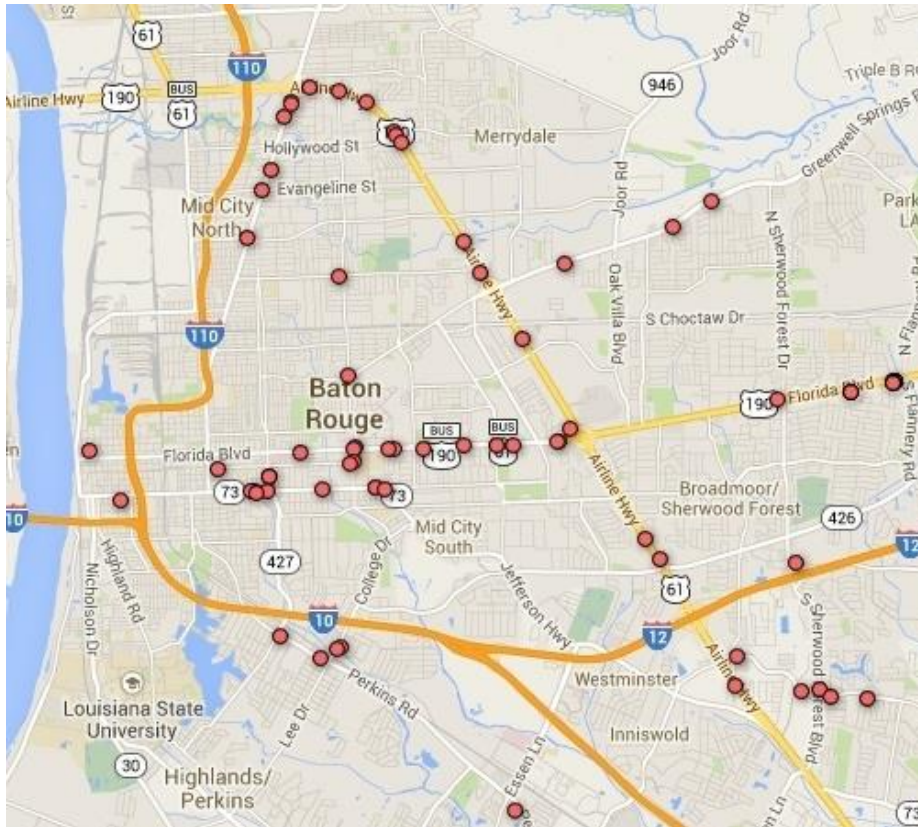
June 7, 2019

Strategic Imperatives

2017 - 2020



A Micro Lending Alternative to Predatory Pay Day Lending



The Faith Fund



**CATHOLIC
CHARITIES**

DIOCESE OF BATON ROUGE



**GET
INVOLVED**

Stand out

Speak up

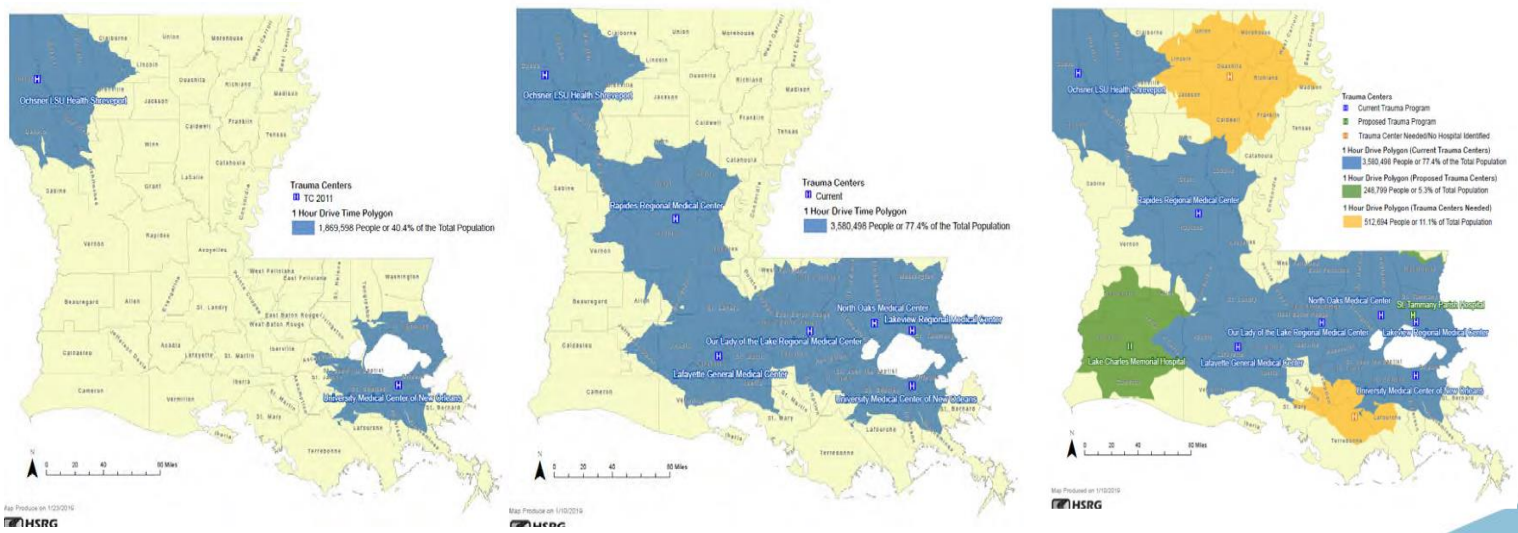
Make a difference




What is the LOUISIANA EMERGENCY RESPONSE NETWORK?

The Louisiana Emergency Response Network (LERN) is an agency of state government created by the Louisiana Legislature in 2004 charged with the responsibility of developing and maintaining a statewide system of care coordination for patients suddenly stricken by serious traumatic injury or time-sensitive illness (such as heart attack and stroke). It is a system also designated to serve as a vital healthcare resource in the face of larger scale emergencies and natural disasters.

Getting to the right place at the right time to receive the right care is a matter of life or death for these patients.



A scenic landscape featuring a dirt road that curves through a vast, golden field. In the distance, a line of green trees marks the horizon. A bright sun is positioned on the right side of the horizon, casting long, radiant rays across the sky. The sky transitions from a deep blue at the top to a lighter, hazy blue near the horizon. The overall atmosphere is peaceful and hopeful.

Leaps of faith
can take us to
wondrous places,
if we're willing
to let ourselves *fall*.

SHANNA HATFIELD

SHANNAHATFIELD.COM



What is Healthy BR?

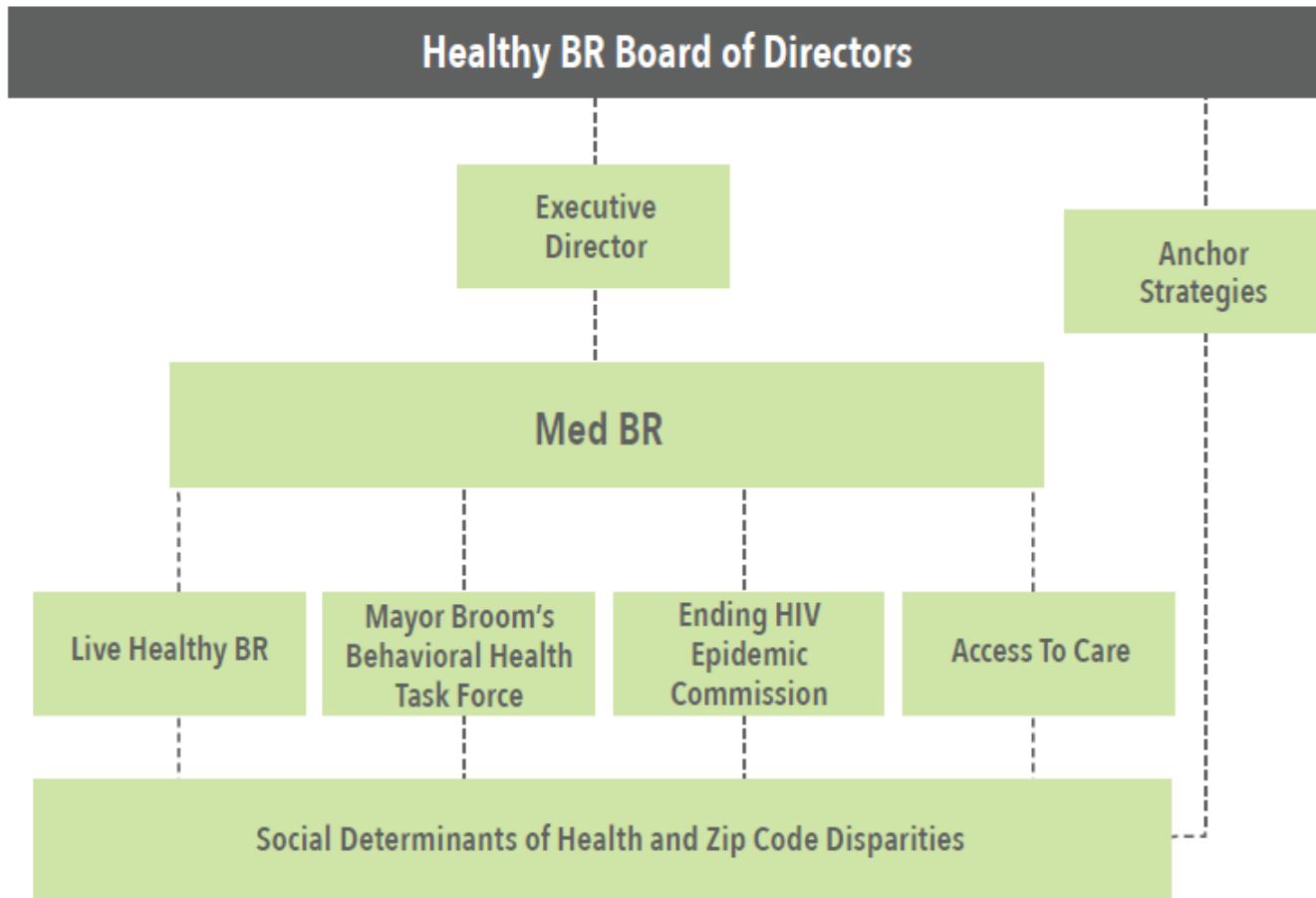
To foster a movement based on **communication**, **collaboration** and **coordination** that promotes a better and healthier life for **all people** in the great city of Baton Rouge.

Mayor-President Sharon Weston Broome			Board Chair Coletta Barrett	
Baton Rouge General Medical Center	Lane Regional Medical Center	Ochsner Baton Rouge	Our Lady of the Lake Regional Medical Center	Woman's Hospital
Louisiana Dept. of Health Medical Director	Pennington Biomedical Research Center	Blue Cross Blue Shield of Louisiana	Louisiana Primary Care Association	Baton Rouge Health District
Baton Rouge Area Chamber	Baton Rouge Area Foundation	BREC (Recreation dept.)	East Baton Rouge Parish School System	Capital Area United Way





HealthyBR Structure





What Makes HealthyBR unique?

The 5 Conditions of Collective Impact

- 1 Common Agenda**
 - Common understanding of the problem
 - Shared vision for change
- 2 Shared Measurement**
 - Collecting data and measuring results
 - Focus on performance management
 - Shared accountability
- 3 Mutually Reinforcing Activities**
 - Differentiated approaches
 - Coordination through joint plan of action
- 4 Continuous Communication**
 - Consistent and open communication
 - Focus on building trust
- 5 Backbone Support**
 - Separate organization(s) with **staff**
 - Resources and skills to **convene** and **coordinate** participating organizations





*Never doubt that a group of thoughtful,
committed citizens can change the world.
Indeed, it is the only thing that ever has.*

Margaret Mead

activehappiness.com

Contact Me!

Coletta Barrett

Vice President of Mission

Our Lady of the Lake Regional Medical Center

225-505-2415 (cell)

Coletta.Barrett@fmolhs.org

