

# TRANSFLECTIVE DISPLAY

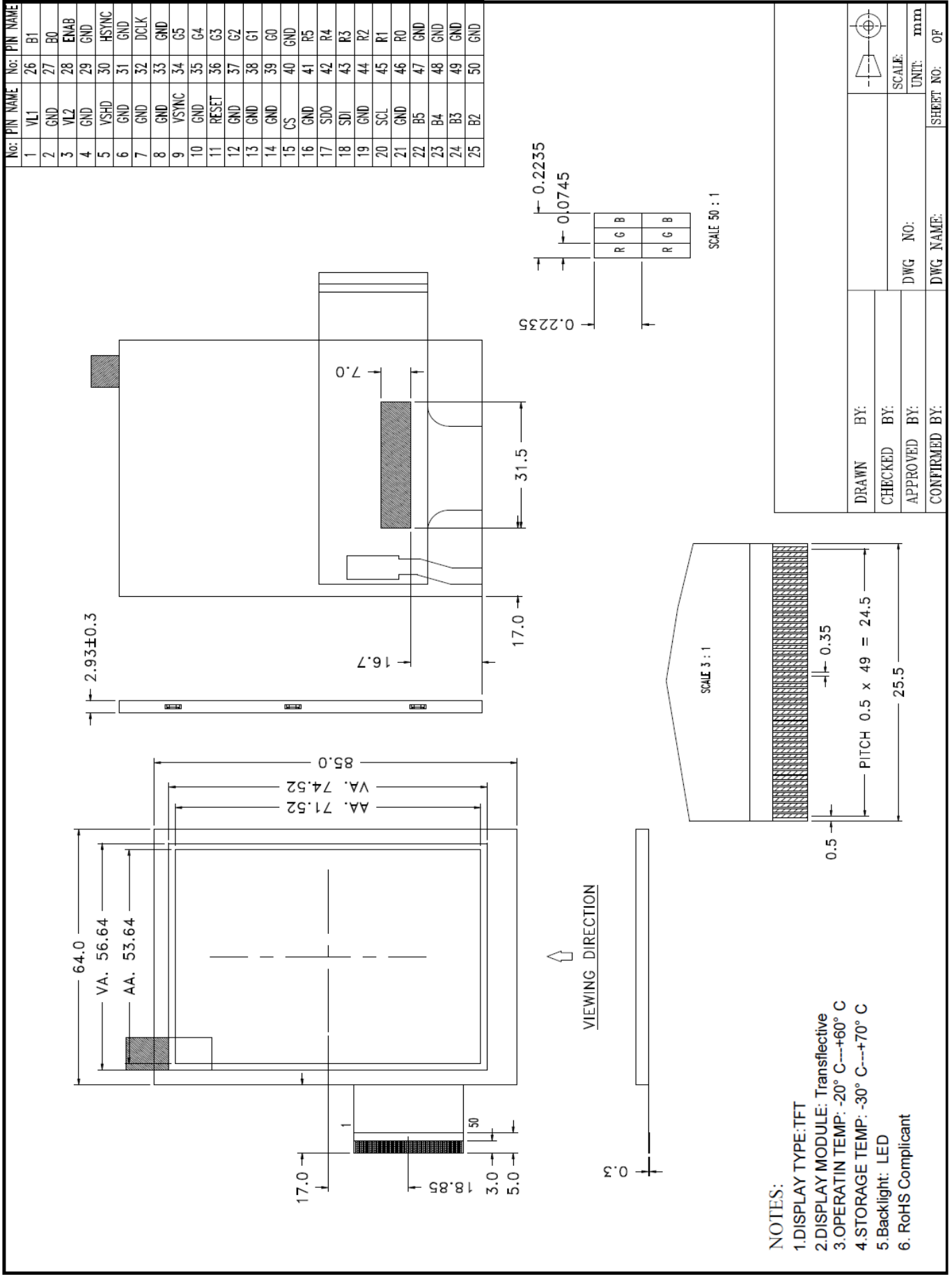
---

## General Information

Item	Contents	Unit
Size	3.5	inch
Resolution	240(RGB) X 320	/
Interface	RGB 18 bits	/
Color Depth	262K dithering	/
Technology type	a-si TFT	/
Pixel pitch	0.2235x0.2235	mm
Pixel Configuration	R.G.B. Vertical Stripe	
Outline Dimension (W x H x D)	64.0x85.0x2.93	mm
Active Area	53.64x71.52	mm
Display Mode	Transflective	/
Viewing Direction	6 o'clock	/
Backlight Type	LED	/
Driver IC	ILI9341	/

---

# 4. Outline Drawing



- NOTES:**
- 1.DISPLAY TYPE:TFT
  - 2.DISPLAY MODULE: Transflective
  - 3.OPERATIN TEMP: -20° C---+60° C
  - 4.STORAGE TEMP: -30° C---+70° C
  - 5.Backlight: LED
  6. RoHS Compliant

DRAWN BY:		SCALE:	
CHECKED BY:		DWG No.:	
APPROVED BY:		UNIT:	mm
CONFIRMED BY:		DWG NAME:	
		SHEET NO.:	OF